

EXHIBIT

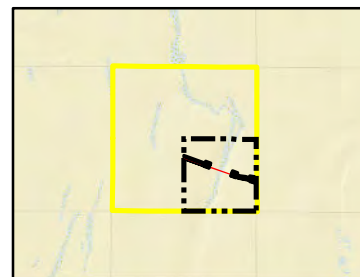
LO153

exhibitsticker.com

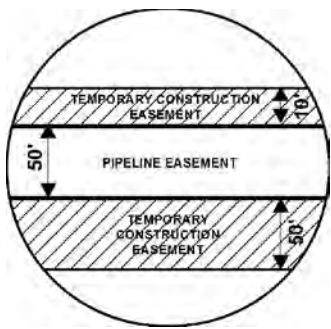
EXHIBIT "B"

PRELIMINARY ROUTE

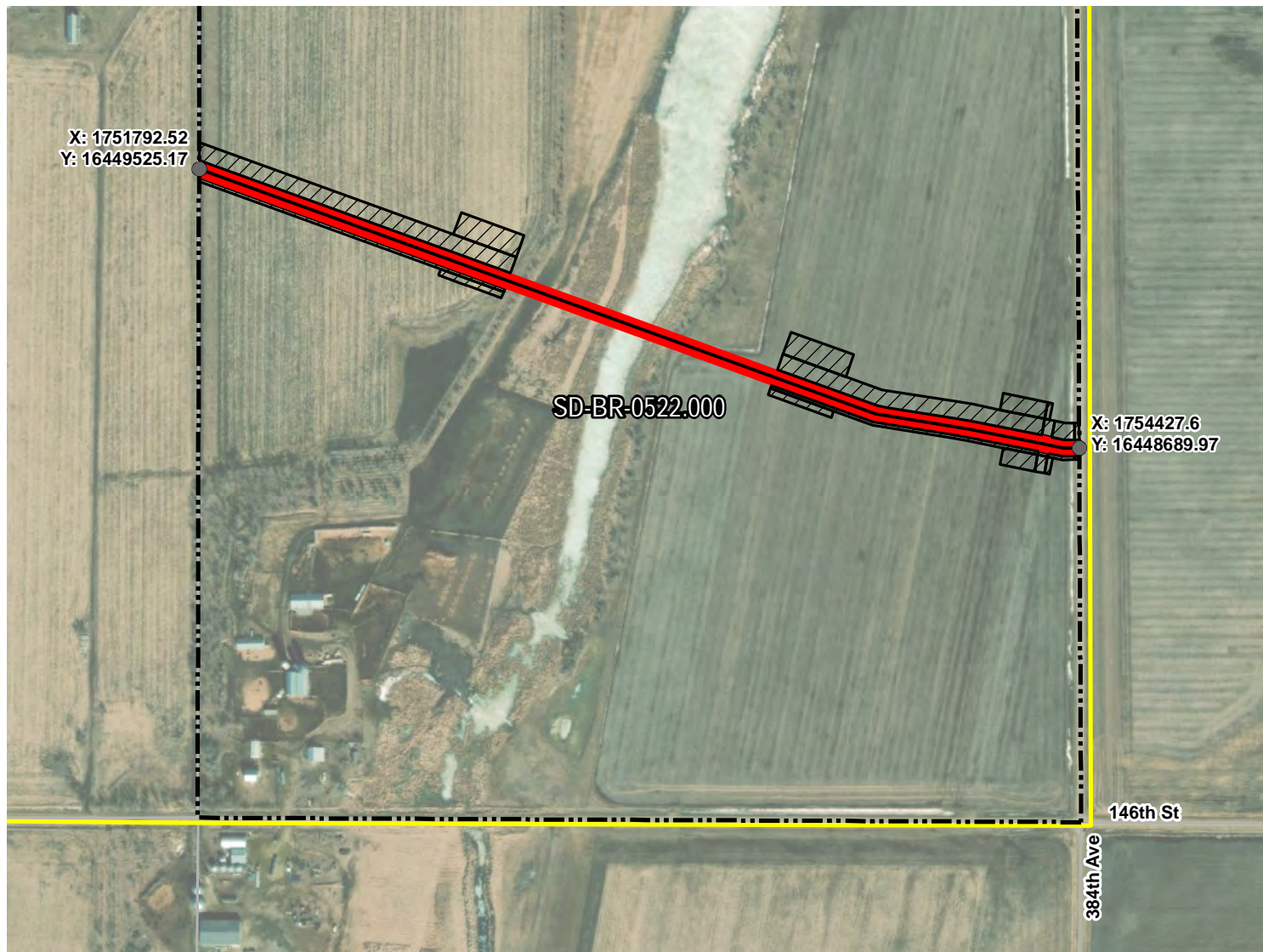
BROWN COUNTY, SOUTH DAKOTA



VICINITY MAP
N.T.S.



SEC. 20 T121N R64W



ROUTING LENGTH = 2773.039 FT +/-

IMPACTS: PIPELINE EASEMENT = 3.183 AC. +/- / TEMPORARY CONSTRUCTION EASEMENT = 3.82 AC. +/-

Legend

- PROPOSED ROUTE
- PIPELINE EASEMENT
- PARCEL BOUNDARY
- TEMPORARY CONSTRUCTION EASEMENT
- ADJACENT PROPERTIES
- SECTION BOUNDARY
- COUNTY BOUNDARY

NOTES:

1. THIS IS A PRELIMINARY DOCUMENT AND IS INTENDED TO DEPICT THE APPROXIMATE LOCATION OF A PROPOSED PIPELINE EASEMENT.
2. THIS DOCUMENT DOES NOT REPRESENT A LAND SURVEY AND IS NOT INTENDED TO DEPICT THE FINAL ALIGNMENT
3. COORDINATE SYSTEM: UTM ZONE 14 NORTH, NAD83, US SURVEY FEET



PRELIMINARY PIPELINE ROUTE

DRAWN BY:	AC	SUMMIT CARBON SOLUTIONS MIDWEST CARBON EXPRESS JARED BOSSLY TAX ID: 6495 TRACT NUMBER: SD-BR-0522.000
CHECKED BY:	JW	
MAP DATE:	12/8/2021	
SCALE:	1 inch = 488'	
REV NO.	DATE	DESCRIPTION
F	10/13/2022	REVISED WORKSPACE
G	10/18/2022	REVISED WORKSPACE
DRAWING NO.	PROJECT NO.	SHEET NO.
C-MCE-ACQ-SD-BR-0522.000	450959	01 of 01



