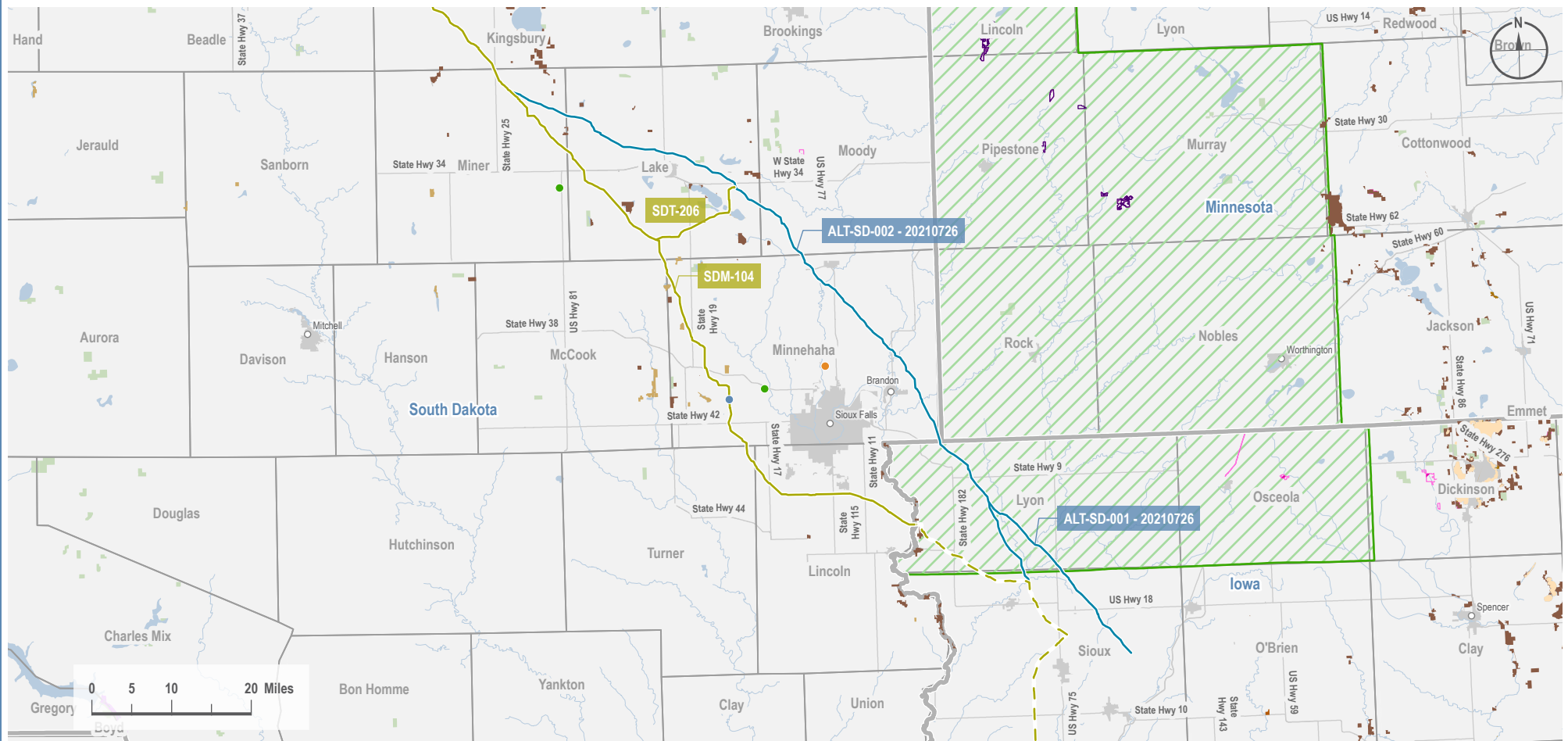
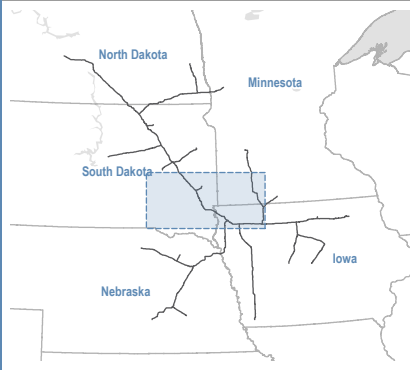


## Appendix 4 - Route Alternatives

# PROJECT ALTERNATIVES MAP - SOUTH DAKOTA



## VICINITY MAP



## LEGEND

- Proposed Project Route (SD)
- - - Proposed Project Route (Other States)
- Alternatives Eliminated From Further Consideration
- Pump Station
- Contractor Yard
- Laydown Yard
- Laydown and Contractor Yards are approximate locations and subject to change
- Pipeline Naming Convention  
[State Abbreviation][Line Designation] - [Line Number]  
(e.g. S-DT-207)  
-State Abbreviation: Iowa (IA), Minnesota (MN), North Dakota (ND), South Dakota (SD)  
-Line Designation: Lateral (L), Main (M), Trunk (T)  
-Line Number: 3-digit series
- City / Town
- County Boundary
- State Boundary
- Urban Area
- USFWS Critical Habitat
- Dakota Skipper
- Piping Plover
- Poweshiek skipperling
- Topeka shiner
- River / Stream
- Waterbody
- Federal Land
- State & Local Conservation Lands
- Local Conservation Area
- Local Park
- Research or Educational Area
- State Conservation Area
- State Other or Unknown
- State Park
- State Recreation Area

## PREPARED BY

### Summit Carbon Solutions

1805 Collaboration Place, Suite 1200  
Ames, Iowa 50010  
United States of America

[www.summitcarbonsolutions.com](http://www.summitcarbonsolutions.com)



## REVISIONS

Date: 2022-02-07

Revised by: GS

Checked by: PD

0 - Issued for SDPUC Application

Date:

Revised by:

Checked by:

## MIDWEST CARBON EXPRESS PROJECT

Figure Title:

Route Alternatives  
South Dakota

Figure Number:

Figure 4-1: ALT-SD-001 & ALT-SD-002

Scale:

1 : 1,192,000  
1 inch equals 18.81 miles

Projection:

Transverse Mercator  
NAD 1983 UTM Zone 14N

Sheet:

1  
1 of 4

Drawing Number:

0906-002-SD-ALT  
Revision 0

# PROJECT ALTERNATIVES MAP - SOUTH DAKOTA



## VICINITY MAP



## LEGEND

- Proposed Project Route (SD)
- Proposed Project Route (Other States)
- Alternatives Eliminated From Further Consideration
- Pump Station
- Contractor Yard
- Laydown Yard
- County Boundary
- State Boundary
- Urban Area
- PLSS Township
- Transportation (TIGER)
- Primary or Secondary Road
- River / Stream
- Waterbody
- Federal Land
- State & Local Conservation Lands
- State Conservation Area
- State Recreation Area

Laydown and Contractor Yards are approximate locations and subject to change

Pipeline Naming Convention  
[State Abbreviation][Line Designation] - [Line Number]  
(e.g. SDT-207)  
-State Abbreviation: Iowa (IA), Minnesota (MN), North Dakota (ND), South Dakota (SD)  
-Line Designation: Lateral (L), Main (M), Trunk (T)  
-Line Number: 3-digit series

## PREPARED BY

### Summit Carbon Solutions

1805 Collaboration Place, Suite 1200  
Ames, Iowa 50010  
United States of America

[www.summitcarbonsolutions.com](http://www.summitcarbonsolutions.com)



## REVISIONS

Date: 2022-02-07 Revised by: GS Checked by: PD  
0 - Issued for SDPUC Application

Date: Revised by: Checked by:

## MIDWEST CARBON EXPRESS PROJECT

Figure Title:

Route Alternatives  
South Dakota

Figure Number:  
Figure 4-2: Alt-SD-003, Alt-SD-004, & Alt-SD-005

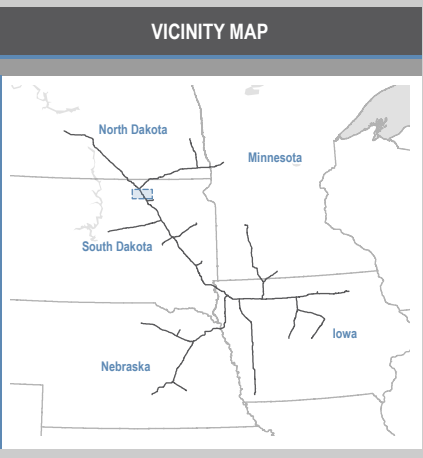
Scale:  
1 : 115,000  
1 inch equals 1.82 miles

Sheet:  
2  
2 of 4

Projection:  
Transverse Mercator  
NAD 1983 UTM Zone 14N

Drawing Number:  
0906-002-SD-ALT  
Revision 0

# PROJECT ALTERNATIVES MAP - SOUTH DAKOTA



### LEGEND

<span style="color: yellow;">—</span> Proposed Project Route (SD)	County Boundary	River / Stream
<span style="color: blue;">—</span> Proposed Project Route (Other States)	State Boundary	Waterbody
<span style="color: red;">—</span> Alternatives Eliminated From Further Consideration	Urban Area	Federal Land
Pump Station	PLSS Township	<b>State &amp; Local Conservation Lands</b>
Contractor Yard	Transportation (TIGER)	State Conservation Area
Laydown Yard	Primary or Secondary Road	State Recreation Area

Laydown and Contractor Yards are approximate locations and subject to change

Pipeline Naming Convention  
 [State Abbreviation][Line Designation] - [Line Number]  
 (e.g. SDT-207)  
 -State Abbreviation: Iowa (IA), Minnesota (MN), North Dakota (ND), South Dakota (SD)  
 -Line Designation: Lateral (L), Main (M), Trunk (T)  
 -Line Number: 3-digit series

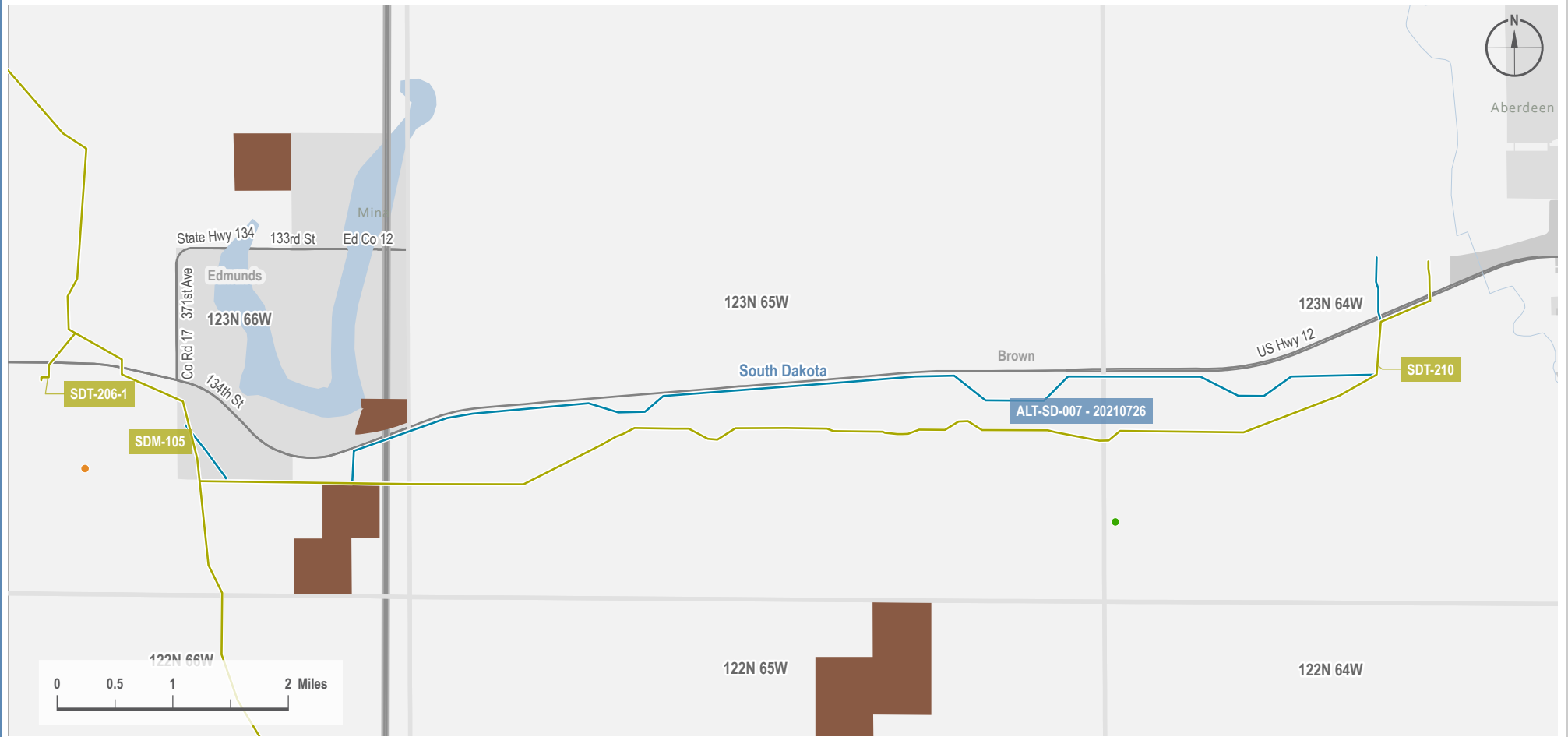
PREPARED BY		
<b>Summit Carbon Solutions</b> 1805 Collaboration Place, Suite 1200 Ames, Iowa 50010 United States of America <a href="http://www.summitcarbonsolutions.com">www.summitcarbonsolutions.com</a>		
REVISIONS		
Date: 2022-02-07	Revised by: GS	Checked by: PD
<b>0 - Issued for SDPUC Application</b>		
Date:	Revised by:	Checked by:

MIDWEST CARBON EXPRESS PROJECT	
Figure Title:  <b>Route Alternatives South Dakota</b>	
Figure Number:  <b>Figure 4-3: Alt-SD-006</b>	
Scale: <b>1 : 200,000</b> 1 inch equals 3.16 miles	Projection: <b>Transverse Mercator</b> NAD 1983 UTM Zone 14N
Sheet: <b>3</b> 3 of 4	Drawing Number: <b>0906-002-SD-ALT</b> Revision 0

Path: I:\Projects\ML\_21015451-00 - SummitCarbon - NCE Project\0800 GEO\10\_Mapping\11 Map Books\05 Regulatory\1001-06-006 South Dakota PUC Alt Routes.aprx



# PROJECT ALTERNATIVES MAP - SOUTH DAKOTA



## VICINITY MAP



## LEGEND

- Proposed Project Route (SD)
- Proposed Project Route (Other States)
- Alternatives Eliminated From Further Consideration
- Pump Station
- Contractor Yard
- Laydown Yard
- County Boundary
- State Boundary
- Urban Area
- PLSS Township
- Transportation (TIGER)
- Primary or Secondary Road
- River / Stream
- Waterbody
- Federal Land
- State & Local Conservation Lands
- State Conservation Area

Laydown and Contractor Yards are approximate locations and subject to change

Pipeline Naming Convention  
[State Abbreviation][Line Designation] - [Line Number]  
(e.g. SDT-207)  
-State Abbreviation: Iowa (IA), Minnesota (MN), North Dakota (ND), South Dakota (SD)  
-Line Designation: Lateral (L), Main (M), Trunk (T)  
-Line Number: 3-digit series

## PREPARED BY

### Summit Carbon Solutions

1805 Collaboration Place, Suite 1200  
Ames, Iowa 50010  
United States of America

[www.summitcarbonsolutions.com](http://www.summitcarbonsolutions.com)



## REVISIONS

Date: 2022-02-07 Revised by: GS Checked by: PD  
0 - Issued for SDPUC Application

Date: Revised by: Checked by:

## MIDWEST CARBON EXPRESS PROJECT

Figure Title:

Route Alternatives  
South Dakota

Figure Number:

Figure 4-4: Alt-SD-007

Scale:

1 : 82,000  
1 inch equals 1.29 miles

Sheet:

4  
4 of 4

Projection:

Transverse Mercator  
NAD 1983 UTM Zone 14N

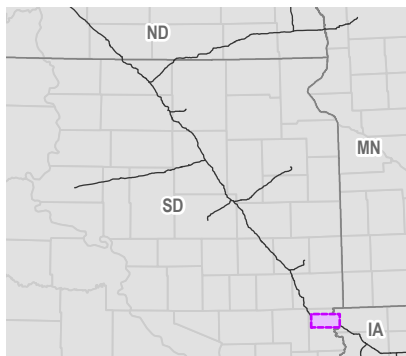
Drawing Number:

0906-002-SD-ALT  
Revision 0

# ALTERNATIVES UNDER ACTIVE CONSIDERATION



## VICINITY MAP



## LEGEND

- Proposed Project Route
- Alternative Under Active Consideration
- County Line

Laydown and Contractor Yards are approximate locations and subject to change

Pipeline Naming Convention  
 [State Abbreviation][Line Designation] - [Line Number]  
 (e.g. SDT-207)  
 -State Abbreviation: Iowa (IA), Minnesota (MN), North Dakota (ND), South Dakota (SD)  
 -Line Designation: Lateral (L), Main (M), Trunk (T)  
 -Line Number: 3-digit series

## PREPARED BY

### Summit Carbon Solutions

2321 North Loop Drive, Suite 221  
 Ames, Iowa 50010  
 United States of America

[www.summitcarbonsolutions.com](http://www.summitcarbonsolutions.com)



## REVISIONS

Date: 2022-02-07 Revised by: GS Checked by: PD

0 - Issued for SDPUC Application

Date: Revised by: Checked by:

## MIDWEST CARBON EXPRESS PROJECT

Figure Title:

Alternatives Under Active Consideration

Figure Number:

Figure 4-5

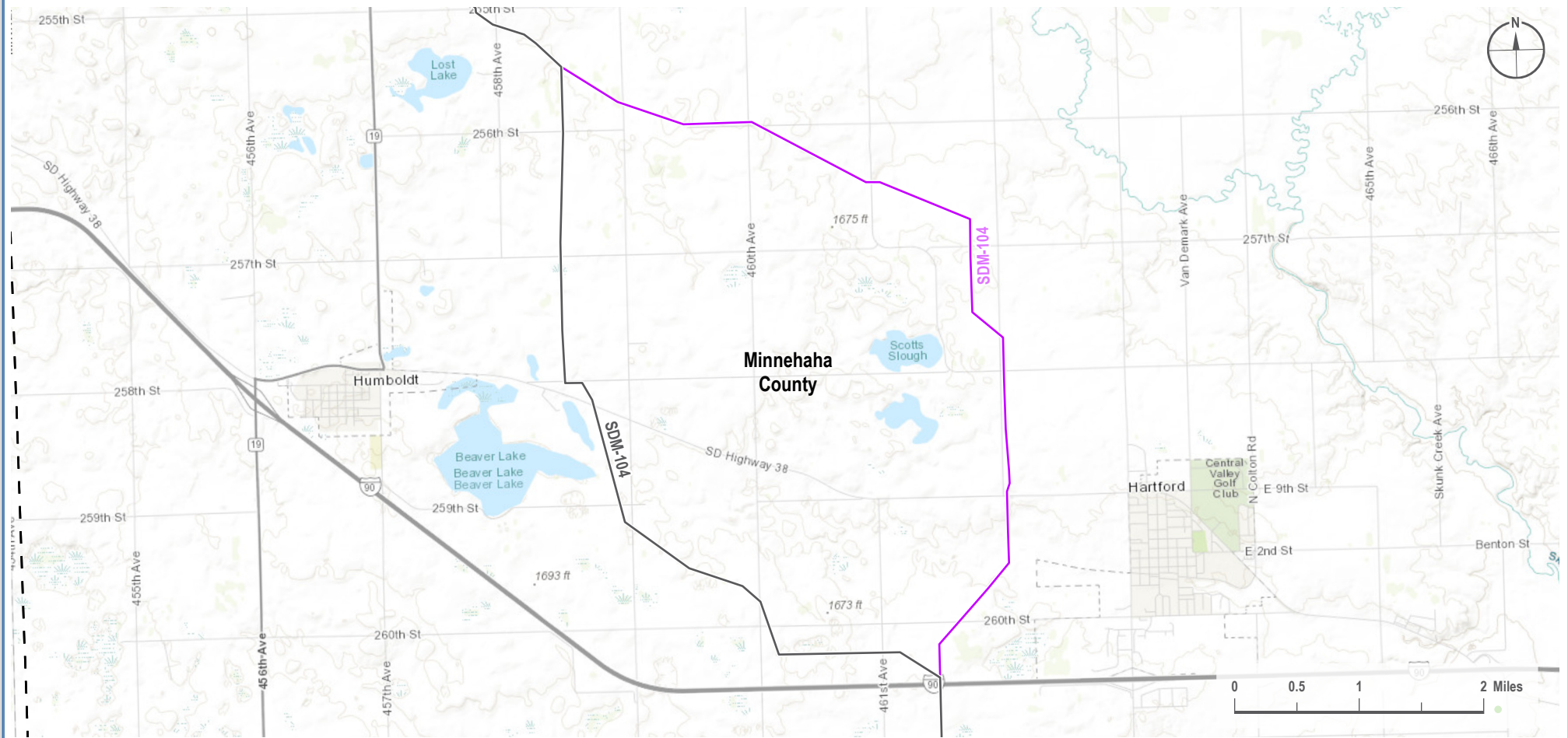
Scale:  
 1 : 117,000  
 1 inch equals 1.85 miles

Projection:  
 Transverse Mercator  
 NAD 1983 UTM Zone 14N

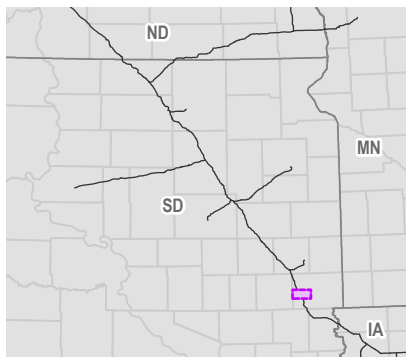
Sheet:  
 1  
 1 of 7

Drawing Number:  
 1002-06-002  
 Revision 0

# ALTERNATIVES UNDER ACTIVE CONSIDERATION



## VICINITY MAP



## LEGEND

- Proposed Project Route
- Alternative Under Active Consideration
- County Line
- Contractor Yard

Laydown and Contractor Yards are approximate locations and subject to change

Pipeline Naming Convention  
[State Abbreviation][Line Designation] - [Line Number]  
(e.g. SDT-207)  
-State Abbreviation: Iowa (IA), Minnesota (MN), North Dakota (ND), South Dakota (SD)  
-Line Designation: Lateral (L), Main (M), Trunk (T)  
-Line Number: 3-digit series

## PREPARED BY

### Summit Carbon Solutions

2321 North Loop Drive, Suite 221  
Ames, Iowa 50010  
United States of America

[www.summitcarbonsolutions.com](http://www.summitcarbonsolutions.com)



## REVISIONS

Date: 2022-02-07 Revised by: GS Checked by: PD

0 - Issued for SDPUC Application

Date: Revised by: Checked by:

## MIDWEST CARBON EXPRESS PROJECT

Figure Title:

Alternatives Under Active Consideration

Figure Number:

Figure 4-6

Scale:

1 : 76,000  
1 inch equals 1.2 miles

Projection:

Transverse Mercator  
NAD 1983 UTM Zone 14N

Sheet:

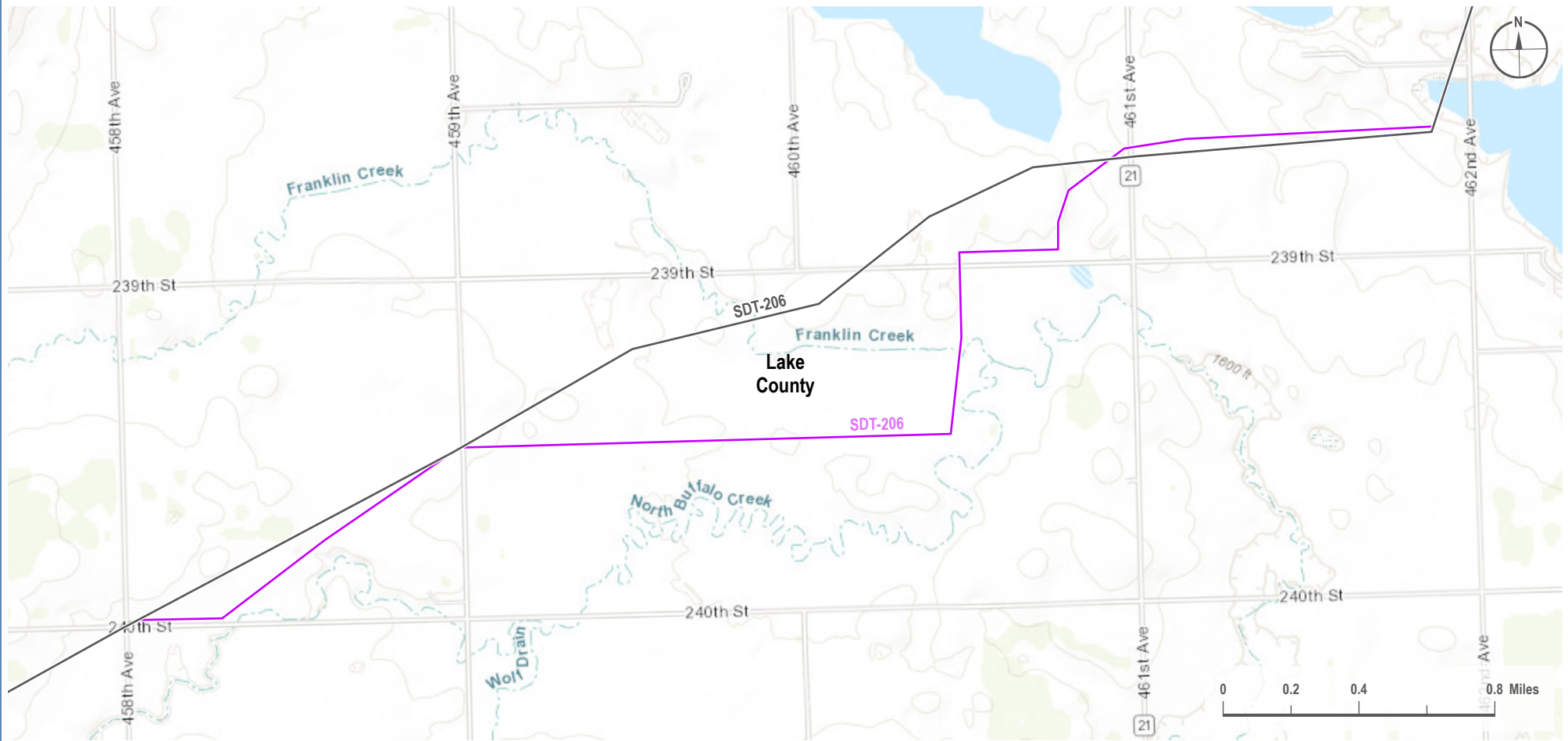
2  
2 of 7

Drawing Number:

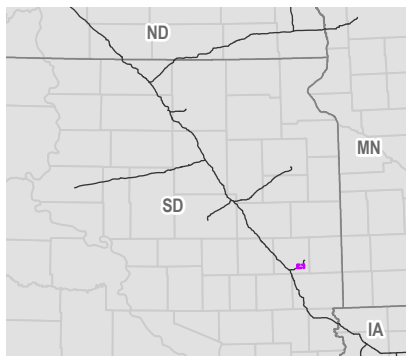
1002-06-002  
Revision 0



# ALTERNATIVES UNDER ACTIVE CONSIDERATION



## VICINITY MAP



## LEGEND

- Proposed Project Route
- Alternative Under Active Consideration

Laydown and Contractor Yards are approximate locations and subject to change

Pipeline Naming Convention  
[State Abbreviation][Line Designation] - [Line Number]  
(e.g. SDT-207)  
-State Abbreviation: Iowa (IA), Minnesota (MN), North Dakota (ND), South Dakota (SD)  
-Line Designation: Lateral (L), Main (M), Trunk (T)  
-Line Number: 3-digit series

## PREPARED BY

### Summit Carbon Solutions

2321 North Loop Drive, Suite 221  
Ames, Iowa 50010  
United States of America

[www.summitcarbonsolutions.com](http://www.summitcarbonsolutions.com)



## REVISIONS

Date: 2022-02-07 Revised by: GS Checked by: PD

0 - Issued for SDPUC Application

Date: Revised by: Checked by:

## MIDWEST CARBON EXPRESS PROJECT

Figure Title:

Alternatives Under Active Consideration

Figure Number:

Figure 4-7

Scale:

1 : 28,000  
1 inch equals 0.44 miles

Projection:

Transverse Mercator  
NAD 1983 UTM Zone 14N

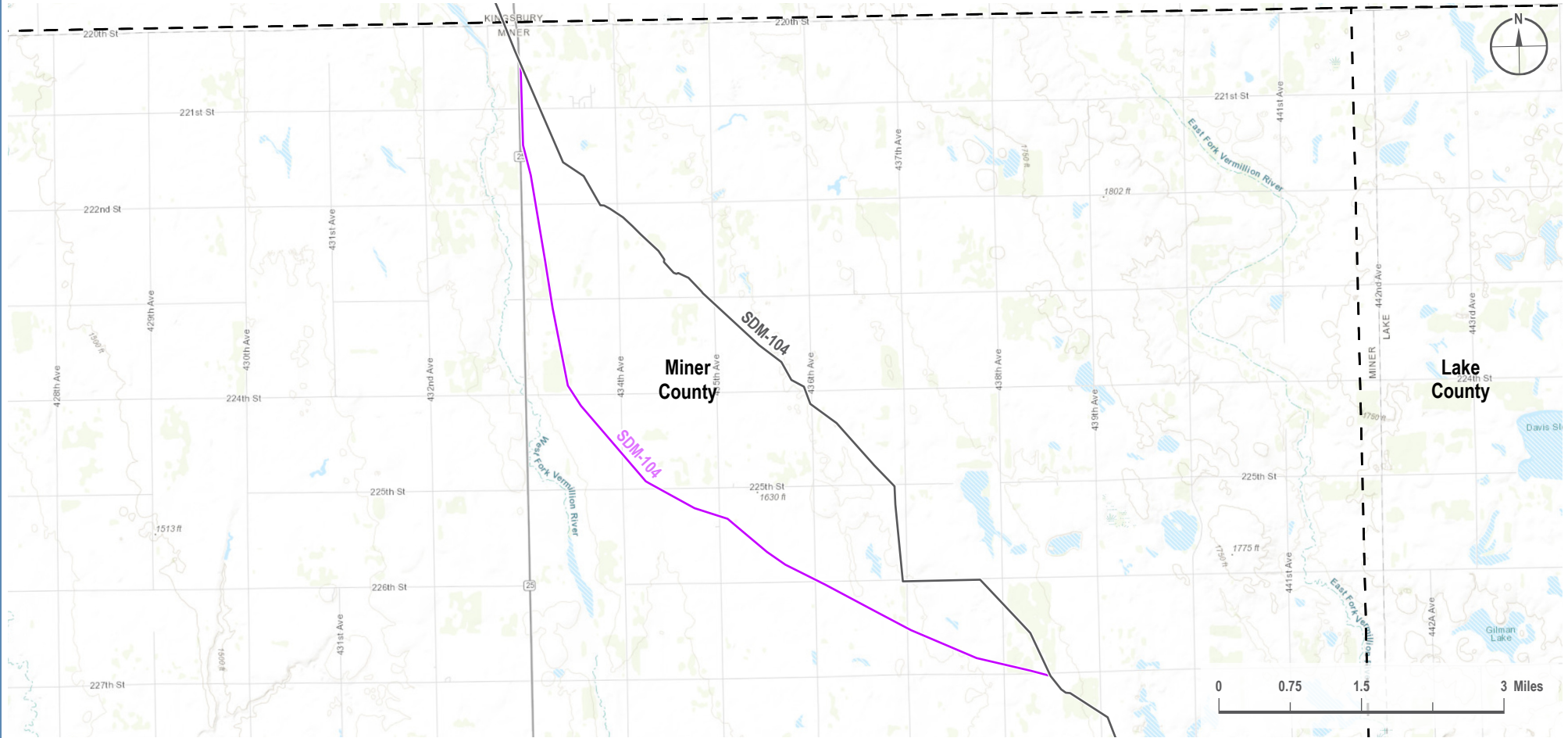
Sheet:

3  
3 of 7

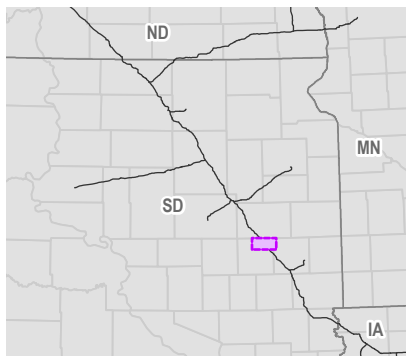
Drawing Number:

1002-06-002  
Revision 0

# ALTERNATIVES UNDER ACTIVE CONSIDERATION



## VICINITY MAP



## LEGEND

- Proposed Project Route
- Alternative Under Active Consideration
- - County Line

Laydown and Contractor Yards are approximate locations and subject to change

Pipeline Naming Convention  
[State Abbreviation][Line Designation] - [Line Number]  
(e.g. SDT-207)  
-State Abbreviation: Iowa (IA), Minnesota (MN), North Dakota (ND), South Dakota (SD)  
-Line Designation: Lateral (L), Main (M), Trunk (T)  
-Line Number: 3-digit series

## PREPARED BY

### Summit Carbon Solutions

2321 North Loop Drive, Suite 221  
Ames, Iowa 50010  
United States of America

[www.summitcarbonsolutions.com](http://www.summitcarbonsolutions.com)



## REVISIONS

Date: 2022-02-07 Revised by: GS Checked by: PD

0 - Issued for SDPUC Application

Date: Revised by: Checked by:

## MIDWEST CARBON EXPRESS PROJECT

Figure Title:

Alternatives Under Active Consideration

Figure Number:

Figure 4-8

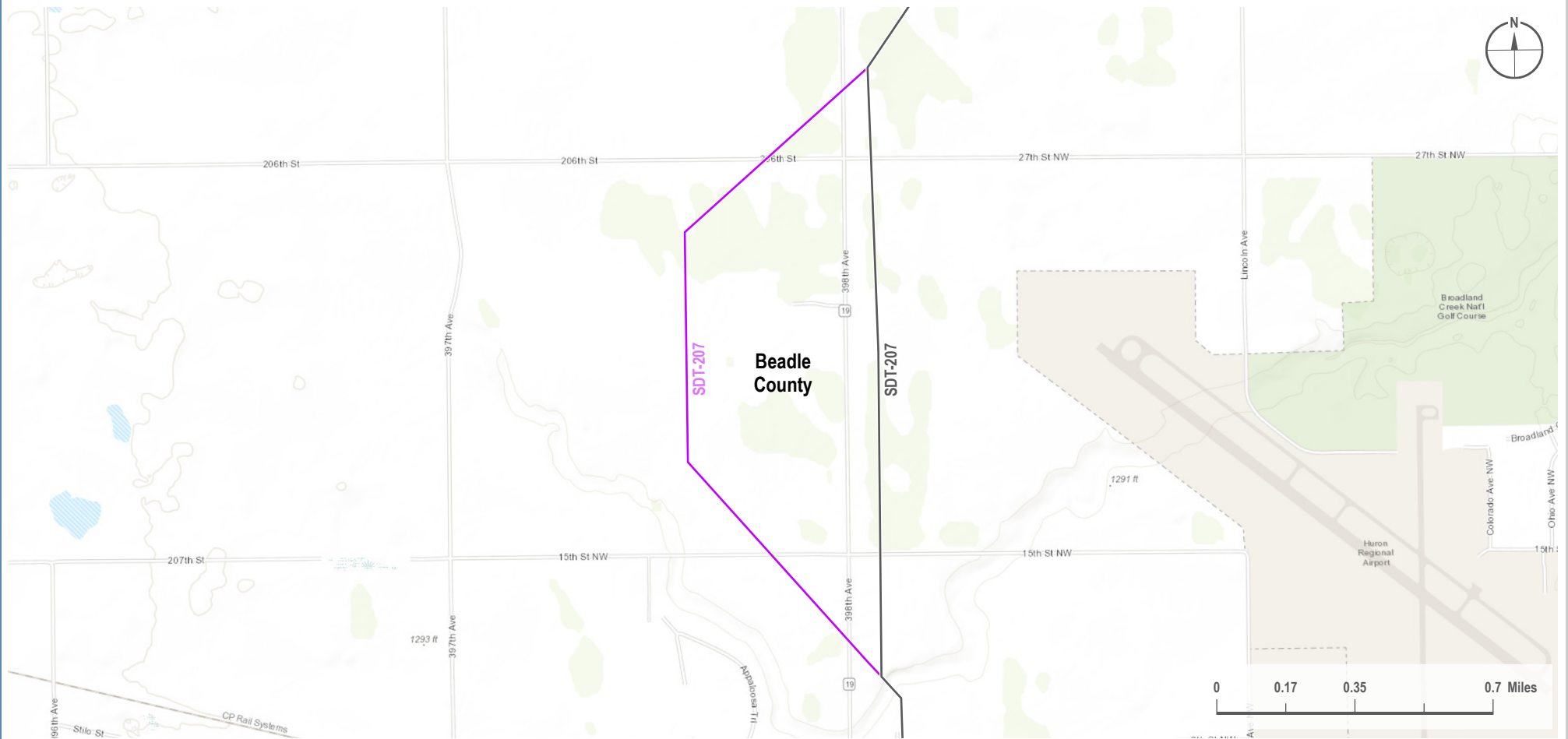
Scale:  
1 : 100,000  
1 inch equals 1.58 miles

Projection:  
Transverse Mercator  
NAD 1983 UTM Zone 14N

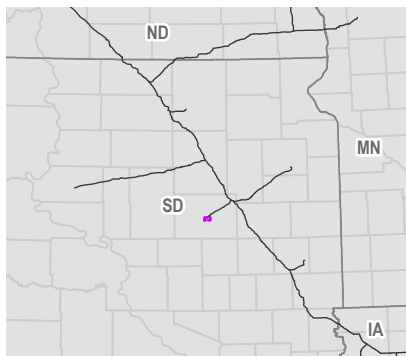
Sheet:  
4  
4 of 7

Drawing Number:  
1002-06-002  
Revision 0

# ALTERNATIVES UNDER ACTIVE CONSIDERATION



## VICINITY MAP



## LEGEND

- Proposed Project Route
- Alternative Under Active Consideration

Laydown and Contractor Yards are approximate locations and subject to change

Pipeline Naming Convention  
[State Abbreviation][Line Designation] - [Line Number]  
(e.g. SDT-207)  
-State Abbreviation: Iowa (IA), Minnesota (MN), North Dakota (ND), South Dakota (SD)  
-Line Designation: Lateral (L), Main (M), Trunk (T)  
-Line Number: 3-digit series

## PREPARED BY

### Summit Carbon Solutions

2321 North Loop Drive, Suite 221  
Ames, Iowa 50010  
United States of America

[www.summitcarbonsolutions.com](http://www.summitcarbonsolutions.com)



## REVISIONS

Date: 2022-02-07 Revised by: GS Checked by: PD

0 - Issued for SDPUC Application

Date: Revised by: Checked by:

## MIDWEST CARBON EXPRESS PROJECT

Figure Title:

Alternatives Under Active Consideration

Figure Number:

Figure 4-9

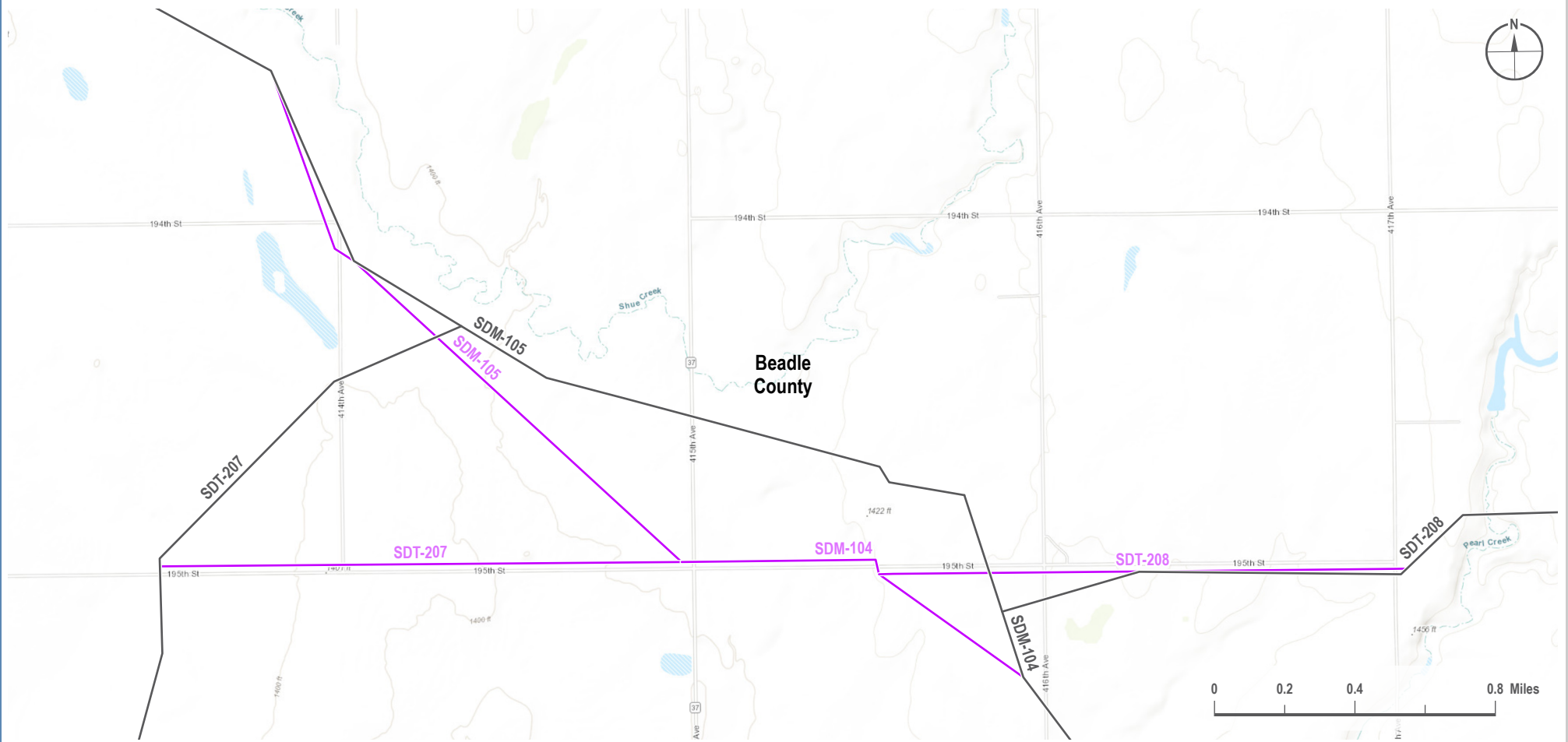
Scale:  
1 : 24,000  
1 inch equals 0.38 miles

Projection:  
Transverse Mercator  
NAD 1983 UTM Zone 14N

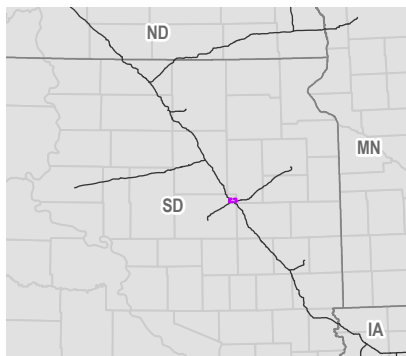
Sheet:  
5  
5 of 7

Drawing Number:  
1002-06-002  
Revision 0

# ALTERNATIVES UNDER ACTIVE CONSIDERATION



## VICINITY MAP



## LEGEND

- Proposed Project Route
- Alternative Under Active Consideration

Laydown and Contractor Yards are approximate locations and subject to change

Pipeline Naming Convention  
[State Abbreviation][Line Designation] - [Line Number]  
(e.g. SDT-207)  
-State Abbreviation: Iowa (IA), Minnesota (MN), North Dakota (ND), South Dakota (SD)  
-Line Designation: Lateral (L), Main (M), Trunk (T)  
-Line Number: 3-digit series

## PREPARED BY

### Summit Carbon Solutions

2321 North Loop Drive, Suite 221  
Ames, Iowa 50010  
United States of America

[www.summitcarbonsolutions.com](http://www.summitcarbonsolutions.com)



## REVISIONS

Date: 2022-02-07 Revised by: GS Checked by: PD

0 - Issued for SDPUC Application

Date: Revised by: Checked by:

## MIDWEST CARBON EXPRESS PROJECT

Figure Title:

Alternatives Under Active Consideration

Figure Number:

Figure 4-10

Scale:

1 : 27,000  
1 inch equals 0.43 miles

Projection:

Transverse Mercator  
NAD 1983 UTM Zone 14N

Sheet:

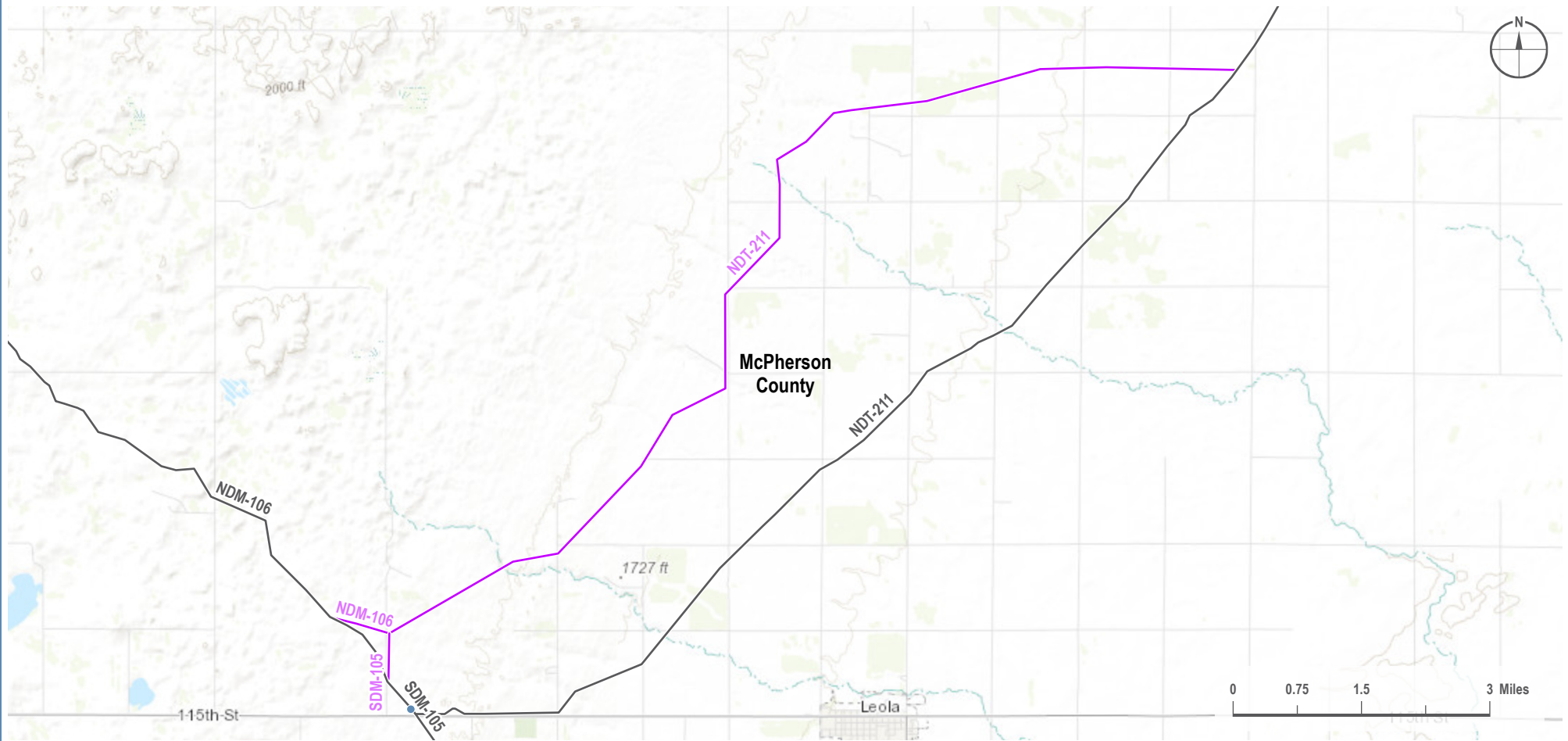
6  
6 of 7

Drawing Number:

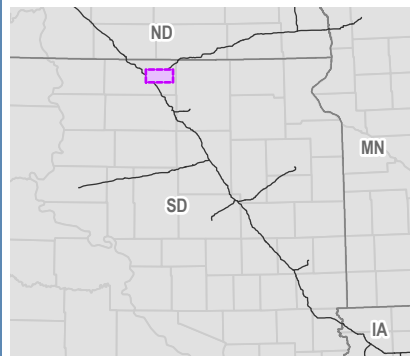
1002-06-002  
Revision 0



# ALTERNATIVES UNDER ACTIVE CONSIDERATION



## VICINITY MAP



## LEGEND

- Proposed Project Route
- Alternative Under Active Consideration
- Pump Station

Laydown and Contractor Yards are approximate locations and subject to change

Pipeline Naming Convention  
 [State Abbreviation][Line Designation] - [Line Number]  
 (e.g. SDT-207)  
 -State Abbreviation: Iowa (IA), Minnesota (MN), North Dakota (ND), South Dakota (SD)  
 -Line Designation: Lateral (L), Main (M), Trunk (T)  
 -Line Number: 3-digit series

## PREPARED BY

### Summit Carbon Solutions

2321 North Loop Drive, Suite 221  
 Ames, Iowa 50010  
 United States of America

[www.summitcarbonsolutions.com](http://www.summitcarbonsolutions.com)



## REVISIONS

Date: 2022-02-07 Revised by: GS Checked by: PD

0 - Issued for SDPUC Application

Date: Revised by: Checked by:

## MIDWEST CARBON EXPRESS PROJECT

Figure Title:

Alternatives Under Active Consideration

Figure Number:

Figure 4-11

Scale:  
 1 : 111,000  
 1 inch equals 1.75 miles

Projection:  
 Transverse Mercator  
 NAD 1983 UTM Zone 14N

Sheet:  
 7  
 7 of 7

Drawing Number:  
 1002-06-002  
 Revision 0