

SOUTH DAKOTA ROUTE VARIATION - 0470-01 (2014 NAIP IMAGERY)



LEGEND

- MILEPOST**
- ROUTE VARIATION (RV)
- ISSUED CENTERLINE AT TIME OF RV*
- ☒ WATERBODY
- ☒ COUNTY LINE
- ☒ SECTION LINE

*CL DATE AT THE TIME OF RV APPROVAL - 2013-04-11
 **MP OF THE ISSUED CL AT THE TIME OF RV APPROVAL

KEYSTONE XL PROJECT
ROUTE VARIATION 0470-01

OWNER: SUTHERLAND	DRAWN BY: GI
STATE: SOUTH DAKOTA	CHKD BY: JF
REF NO: 0470-01	DATE: 2014-01
REVISION FOR REVIEW	
PRELIMINARY	
DATE: 2/14/14	PROJECT: 140611/0470-01
DWG: 0470-01-01	SHEET: 0470-01

PROPOSED BY:
exp Energy Services Inc.
 T +1 850.345.5441
 F +1 850.365.5523
 1300 METROPOLITAN BLVD.
 TALLAHASSEE, FL 32308, USA
 www.exp.com

exp.

• BUILDINGS • EARTH & ENVIRONMENT • ENERGY •
 • INDUSTRIAL • INFRASTRUCTURE • SUSTAINABILITY •

KEYSTONE XL PROJECT

SOUTH DAKOTA ROUTE VARIATION - 0395-01 (2014 NAIP IMAGERY)



LEGEND

- MILEPOST**
- ROUTE VARIATION (RV)
- ISSUED CENTERLINE AT TIME OF RV*
- ☒ WATERBODY
- ☒ COUNTY LINE
- ☒ SECTION LINE

*CL DATE AT THE TIME OF RV APPROVAL - 2013-08-18
 **MP OF THE ISSUED CL AT THE TIME OF RV APPROVAL

KEYSTONE XL PROJECT
ROUTE VARIATION 0395-01

COUNTY:	HARDING	DRAWN BY:	SL
STATE:	SOUTH DAKOTA	CHK'D BY:	PS
REV. NO.:	000000	DATE:	
A:	ISSUED FOR REVIEW	DATE:	2014-01-01
PRELIMINARY			
DATE:	2014-01-01	PROJECT NO.:	140761-001-01
DWG. NO.:	14-04-001-001-01	SHEET:	14-04-001

PREPARED BY:
exp Energy Services Inc.
 T +1 800 385 5441
 F +1 850 365 5523
 1300 METROPOLITAN BLVD.
 TALLAHASSEE, FL 32304, USA
 www.exp.com

• SUBLENGS • EARTH & ENVIRONMENT • ENERGY •
 • INDUSTRIAL • INFRASTRUCTURE • SUSTAINABILITY •

KEYSTONE XL PROJECT

SOUTH DAKOTA ROUTE VARIATION - 0212-01 (2014 NAIP IMAGERY)



LEGEND

- MILEPOST**
- ROUTE VARIATION (RV)
- ISSUED CENTERLINE AT TIME OF RV*
- WATERBODY
- COUNTY LINE
- SECTION LINE

*CL DATE AT THE TIME OF RV APPROVAL - 2010-11-14
 **MAP OF THE ISSUED CL AT THE TIME OF RV APPROVAL

KEYSTONE XL PROJECT
ROUTE VARIATION 0212-01

COUNTY:	HARDING	DRAWN BY:	SI
STATE:	SOUTH DAKOTA	CHECKED BY:	PD
REV. NO.:	REVISION:	DATE:	
A	ISSUED FOR REVIEW	2/24/14	
PRELIMINARY			
DATE:	2/24/14	PROJECT NO.:	140761174734
DWG. NO.:	0212-01	SHEET:	04/23/14

PREPARED BY
exp Energy Services Inc.
 T +1.800.385.5441
 F +1.800.385.0023
 1300 METROPOLITAN BLVD.
 TALLAHASSEE, FL 32308, USA
 WWW.EXP.ENERGY.COM

• BUILDINGS • EARTH & ENVIRONMENT • ENERGY •
 • INDUSTRIAL • INFRASTRUCTURE • SUSTAINABILITY •

KEYSTONE XL PROJECT



LEGEND

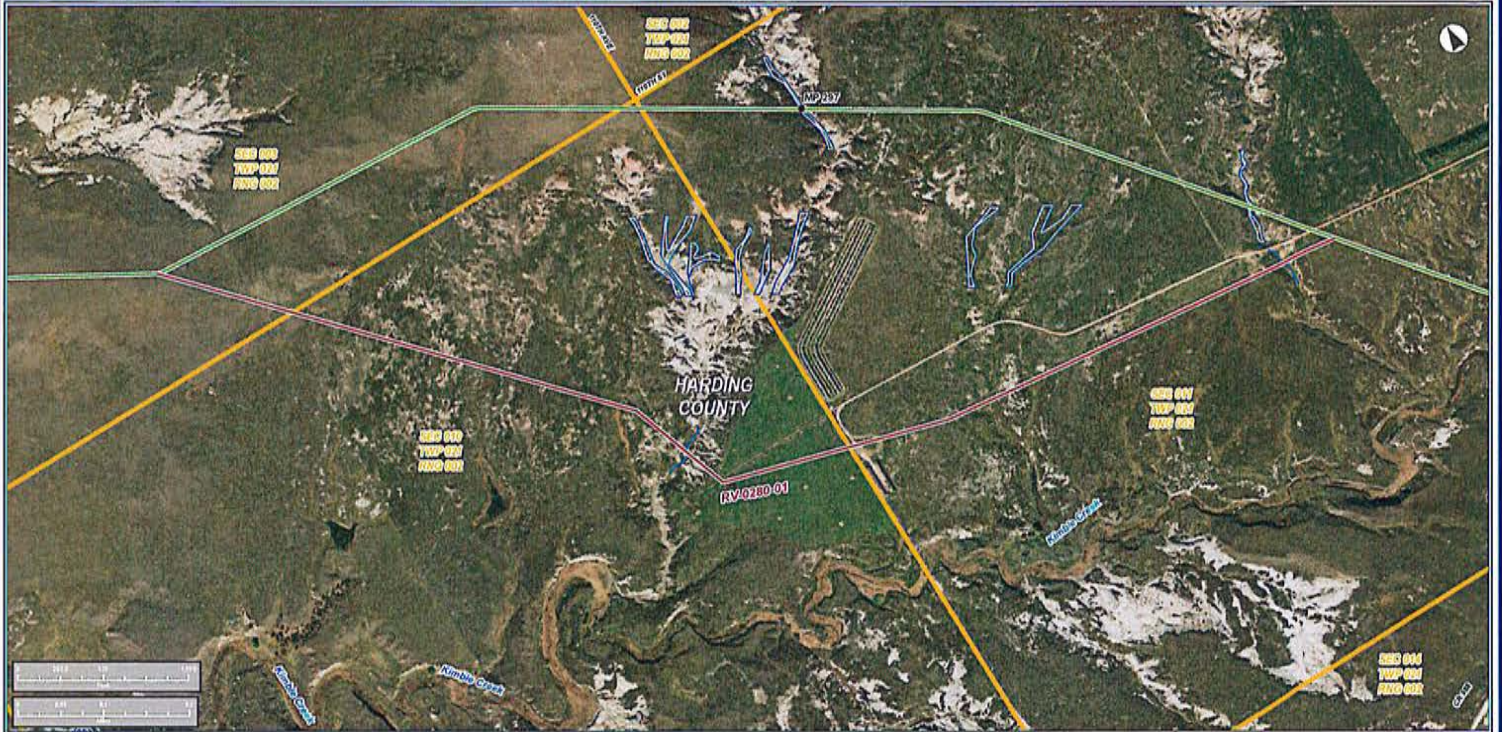
- MILEPOST**
- ROUTE VARIATION (RV)
- ISSUED CENTERLINE AT TIME OF RV*
- WATERBODY
- COUNTY LINE
- SECTION LINE

*CL DATE AT THE TIME OF RV APPROVAL - 2013-03-14
 **MP OF THE ISSUED CL AT THE TIME OF RV APPROVAL

KEYSTONE XL PROJECT			
ROUTE VARIATION 0413-01			
COUNTY:	HARDING	SECTION:	53
STATE:	SOUTH DAKOTA	ORDERED BY:	PTD
REV. NO.:	1	REVISION:	DATE
A	ISSUED FOR REVIEW		2014-01-01
PRELIMINARY			
DATE:	2014-01-01	PROJECT CODE:	1407631/0413-01
DATE:		DATE:	

PREPARED BY
exp Energy Services Inc.
 T +1.800.365.5441
 F +1.800.365.5023
 1300 METROPOLITAN BLVD.
 TALLAHASSEE, FL 32308 USA
 WWW.EXP.COM

• BUILDINGS • EARTH & ENVIRONMENT • ENERGY •
 • INDUSTRIAL • INFRASTRUCTURE • SUSTAINABILITY •



LEGEND

- MILEPOST**
- ROUTE VARIATION (RV)
- ISSUED CENTERLINE AT TIME OF RV*
- ▭ WATERBODY
- ▭ COUNTY LINE
- ▭ SECTION LINE

*CL DATE AT THE TIME OF RV APPROVAL - 2013-03-14
 **MP OF THE ISSUED CL AT THE TIME OF RV APPROVAL

KEYSTONE XL PROJECT
ROUTE VARIATION 0280-01

COUNTY:	HARDING	DRAWN BY:	SL
STATE:	SOUTH DAKOTA	ORDERED BY:	PD
REV NO.:	REVISION	DATE	
1	ISSUE OF RV APPROVAL	2014-04-04	
PRELIMINARY			
DATE:	2015-01-21	PRODUCTION:	140761/00116
APP:	AL-65433407-02014	SHEET:	04/0004

PROVIDED BY:
exp Energy Services Inc.
 T: +1.800.365.5441
 F: +1.800.365.5523
 1300 METROPOLETTAN BLVD.
 TALLAHASSEE, FL 32304, USA
 www.exp.com

• BUILDINGS • EARTH & ENVIRONMENT • ENERGY •
 • INDUSTRIAL • INFRASTRUCTURE • SUSTAINABILITY •



LEGEND

- MILEPOST**
- ROUTE VARIATION (RV)
- ISSUED CENTERLINE AT TIME OF RV*
- ▭ WATERBODY
- ▭ COUNTY LINE
- ▭ SECTION LINE

*CL DATE AT THE TIME OF RV APPROVAL - 2010-03-24
 **MP OF THE ISSUED CL AT THE TIME OF RV APPROVAL

KEYSTONE XL PROJECT
ROUTE VARIATION 0166-01

COUNTY	HARDING	DRAWN BY	SI
STATE	SOUTH DAKOTA	CHECKED BY	PD
REV. NO.	REVISION	DATE	
A	ISSUE OF APPROVAL	2/14/2014	
PRELIMINARY			
DATE	2013-01	PRODUCTION	140213/047116

PREPARED BY
exp Energy Services Inc.
 T. +1.800.385.6441
 F. +1.800.385.0023
 1301 MC BRIDGES FARM BLVD.
 TALLAHASSEE, FL 32308, USA
 www.exp.com

• BUILDINGS • EARTH & ENVIRONMENT • ENERGY •
 • INDUSTRIAL • INFRASTRUCTURE • SUSTAINABILITY •

DATE: 2013-01 PRODUCTION: 140213/047116 SHEET: 04/04

SOUTH DAKOTA ROUTE VARIATION - 0192-01 (2014 NAIP IMAGERY)



LEGEND

- MILEPOST**
- ROUTE VARIATION (RV)
- ISSUED CENTERLINE AT TIME OF RV*
- ▭ WATERBODY
- ▭ COUNTY LINE
- ▭ SECTION LINE

*CL DATE AT THE TIME OF RV APPROVAL: 2010-11-14
 **MP OF THE ISSUED CL AT THE TIME OF RV APPROVAL

KEYSTONE XL PROJECT
ROUTE VARIATION 0192-01

COUNTY:	HARDING	DRAWN BY:	SI
STATE:	SOUTH DAKOTA	CHECKED BY:	FD
REV. NO.:	1	REVISION:	ISS
A	ISSUED FOR REVIEW:	2010-01	
PRELIMINARY			
DATE:	2/15/12	PROJECT:	44761/0416
DWG:	04462004/04761-01	SHEET:	04-1030

PROPOSED BY:
exp Energy Services Inc.
 T: +1.800.365.5441
 F: +1.800.365.0023
 1300 METROPOLE/FM BELVED.
 TALLAHASSEE, FL 32308, USA
 WWW.EXP.COM

• BUILDINGS • EARTH & ENVIRONMENT • ENERGY •
 • INDUSTRIAL • INFRASTRUCTURE • SUSTAINABILITY •

KEYSTONE XL PROJECT

SOUTH DAKOTA ROUTE VARIATION - 0456-01 (2014 NAIP IMAGERY)



LEGEND

- MILEPOST**
- ROUTE VARIATION (RV)
- ISSUED CENTERLINE AT TIME OF RV*
- ▭ WATERBODY
- ▭ COUNTY LINE
- ▭ SECTION LINE

*CL DATE AT THE TIME OF RV APPROVAL - 2013-06-11
 **MP OF THE ISSUED CL AT THE TIME OF RV APPROVAL

**KEYSTONE XL PROJECT
ROUTE VARIATION 0456-01**

COUNTY	HARDING	DRAWN BY	GI
STATE	SOUTH DAKOTA	CHECKED BY	PD
REV. NO.	REVISION	DATE	
1	ISSUED FOR REVIEW	2014-04-15	
PRELIMINARY			
DATE	2014-04-15	PROJECT	HAZARDOUS
DRG.	TA-443304040503	SHEET	040405

PREPARED BY
exp Energy Services Inc.
 T: +1.800.345.5441
 F: +1.800.345.5573
 530 W. TROSPER ATAN BLVD.
 TALLAHASSEE, FL 32308, USA
www.exp.com

exp.

• BUILDINGS • EARTH & ENVIRONMENT • ENERGY •
 • INDUSTRIAL • INFRASTRUCTURE • SUSTAINABILITY •

KEYSTONE XL PROJECT



LEGEND

- MILEPOST**
- ROUTE VARIATION (RV)
- ISSUED CENTERLINE AT TIME OF RV*
- WATERBODY
- COUNTY LINE
- SECTION LINE

*CL DATE AT THE TIME OF RV APPROVAL - 2012-03-14
 **MP OF THE ISSUED CL AT THE TIME OF RV APPROVAL

KEYSTONE XL PROJECT
ROUTE VARIATION 0269-01

COUNTY: SOUTHDAKOTA	DRAWN BY: SJ
STATE: SOUTH DAKOTA	CHECKED BY: PJ
REV. NO: 4	DATE: 2014-01
EDUCATED FOR REVIEW: 2014-01	
PRELIMINARY	
DATE: 2014-01	PROJECT: KEYSX01/01/01
DWG: 14-04-01-01-01-01	SHEET: 04-01-01

PROPOSED BY:
exp Energy Services Inc.
 T: +1.800.385.5441
 F: +1.800.385.5023
 1302 WEST TROPICULITAN BLVD.
 TALLAHASSEE, FL 32308 USA
 WWW.EXP.COM

• BUILDINGS • EARTH & ENVIRONMENT • ENERGY •
 • INDUSTRIAL • INFRASTRUCTURE • SUSTAINABILITY •

SOUTH DAKOTA ROUTE VARIATION - 0190-01 (2014 NAIP IMAGERY)



LEGEND

- MILEPOST**
- ROUTE VARIATION (RV)
- ISSUED CENTERLINE AT TIME OF RV*
- ▭ WATERBODY
- ▭ COUNTY LINE
- ▭ SECTION LINE

*CL DATE AT THE TIME OF RV APPROVAL - 2010-03-24
 **MP OF THE ISSUED CL AT THE TIME OF RV APPROVAL

KEYSTONE XL PROJECT
ROUTE VARIATION 0190-01

COUNTY:	HARDING	DRAWN BY:	CS
DATE:	SOUTH DAKOTA	CHECKED BY:	PS
REV. NO.:	01	DATE:	
A	ISSUED FOR REVIEW:	DATE:	
PRELIMINARY			
DATE:	2/15/12	PROJECT:	KEYSTONE XL
DWG. NO.:	04-00000000000000000000	SHEET:	04/0000

PREPARED BY
exp Energy Services Inc.
 T +1.850.365.5441
 F +1.850.365.5023
 1300 METROPOLETTAN BLVD.
 TALLAHASSEE, FL 32308, USA
 WWW.EXP.COM

• BLENDED • EARTH & ENVIRONMENT • ENERGY •
 • INDUSTRIAL • INFRASTRUCTURE • SUSTAINABILITY •

KEYSTONE XL PROJECT

SOUTH DAKOTA ROUTE VARIATION - 0281-01 (2014 NAIP IMAGERY)



LEGEND

- MILEPOST**
- ROUTE VARIATION (RV)
- ISSUED CENTERLINE AT TIME OF RV*
- WATERBODY
- COUNTY LINE
- SECTION LINE

*CL DATE AT THE TIME OF RV APPROVAL - 2013-03-14
 **MP OF THE ISSUED CL AT THE TIME OF RV APPROVAL

KEYSTONE XL PROJECT
ROUTE VARIATION 0281-01

COUNTY:	HARDING	DRAWN BY:	CL
STATE:	SOUTH DAKOTA	DESIGNED BY:	PD
REF NO:	0281-01	DATE:	03/14/2013
PRELIMINARY			
DATE:	2/15/13	PAUSE TIME:	14/013/14/13

PREPARED BY:
exp Energy Services Inc.
 T +1 850 385 5441
 F +1 850 385 5023
 1300 METROPOLITAN BLVD.
 TALLAHASSEE, FL 32308, USA
 www.exp.com

exp.

• BUILDINGS • EARTH & ENVIRONMENT • ENERGY •
 • INDUSTRIAL • INFRASTRUCTURE • SUSTAINABILITY •

DATE: 2/15/13 PAUSE TIME: 14/013/14/13 SHEET: 0480

KEYSTONE XL PROJECT



LEGEND

- MILEPOST**
- ROUTE VARIATION (RV)
- ISSUED CENTERLINE AT TIME OF RV*
- WATERBODY
- COUNTY LINE
- SECTION LINE

*CL DATE AT THE TIME OF RV APPROVAL - 2013-08-13
 **MP OF THE ISSUED CL AT THE TIME OF RV APPROVAL

KEYSTONE XL PROJECT
ROUTE VARIATION 0381-01

COUNTY SURVEY	DRAWN BY: CJ
DATE: 10/27/2014	CHECKED BY: PJ
REV. NO:	REVISION
1	ISSUED FOR REVIEW 07/20/14
PRELIMINARY	
DATE: 2014-01	PROJECTION: UTM/12N/12N
FILE: KL-0481-01-01-01	SHEET: 0481-01

PROPOSED BY
exp Energy Services Inc.
 T: +1 800 345 5441
 F: +1 800 285 8223
 1300 METROPOLITAN BLVD.
 TALLAHASSEE, FL 32308, USA
 www.exp.com

• BUILDINGS • EARTH & ENVIRONMENT • ENERGY •
 • INDUSTRIAL • INFRASTRUCTURE • SUSTAINABILITY •

SOUTH DAKOTA ROUTE VARIATION - 0382-01 (2014 NAIP IMAGERY)



LEGEND

- MILEPOST**
- ROUTE VARIATION (RV)
- ISSUED CENTERLINE AT TIME OF RV**
- WATERBODY
- COUNTY LINE
- SECTION LINE

**CL DATE AT THE TIME OF RV APPROVAL - 2012-06-15
**MP OF THE ISSUED CL AT THE TIME OF RV APPROVAL

KEYSTONE XL PROJECT
ROUTE VARIATION 0382-01

COUNTY:	HARDING	DRAWN BY:	SL
STATE:	SOUTH DAKOTA	CHECKED BY:	PD
REV NO.:	000000	DATE:	2014/01/21
PRELIMINARY			
DATE:	2/16/21	PROJECT NO.:	14021001314

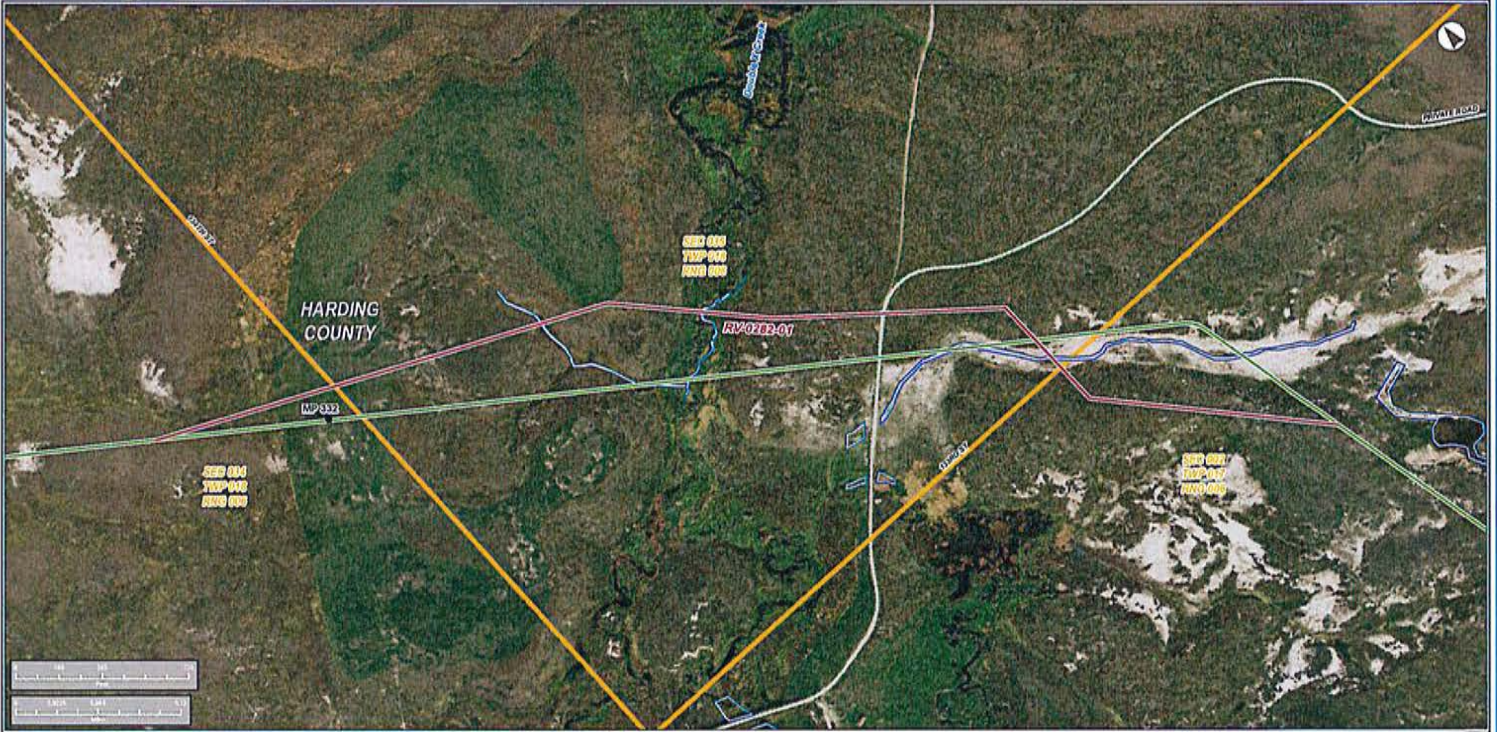
PREPARED BY
exp Energy Services Inc.
T +1 800 345 5441
F +1 850 365 0523
1300 METROPOLITAN BLVD.
TALLAHASSEE, FL 32308 USA
www.exp.com

BUILDINGS • EARTH & ENVIRONMENT • ENERGY •
INDUSTRIAL • INFRASTRUCTURE • SUSTAINABILITY

DATE: 2/16/21 PROJECT NO: 14021001314 SHEET: 04/040

KEYSTONE XL PROJECT

SOUTH DAKOTA ROUTE VARIATION - 0282-01 (2014 NAIP IMAGERY)



LEGEND

- MILEPOST**
- ROUTE VARIATION (RV)
- ISSUED CENTERLINE AT TIME OF RV*
- ▭ WATERBODY
- ▭ COUNTY LINE
- ▭ SECTION LINE

*CL DATE AT THE TIME OF RV APPROVAL - 2012-03-14
 **MP OF THE ISSUED CL AT THE TIME OF RV APPROVAL

KEYSTONE XL PROJECT
ROUTE VARIATION 0282-01

COUNTY:	HARDING	SECTION:	51
STATE:	SOUTH DAKOTA	SECTION BY:	PT
REV. NO.:	REVISED	DATE:	
A:	EDUCATION	DATE:	2012-01
PRELIMINARY			
DATE:	2/15/12	PROJECT:	140612/01/1
DWG:	PL/INT/REVISED	SHEET:	140601

Prepared by
exp Energy Services Inc.
 P + 1.800.345.5441
 F + 1.800.345.5023
 1300 WETZELVILLE BLVD.
 TALLAHASSEE, FL 32308 USA
www.exp.com

exp.

• BUILDINGS • EARTH & ENVIRONMENT • ENERGY •
 • INDUSTRIAL • INFRASTRUCTURE • SUSTAINABILITY •

KEYSTONE XL PROJECT



LEGEND

- MILEPOST**
- ROUTE VARIATION (RV)
- ISSUED CENTERLINE AT TIME OF RV*
- ▭ WATERBODY
- ▭ COUNTY LINE
- ▭ SECTION LINE

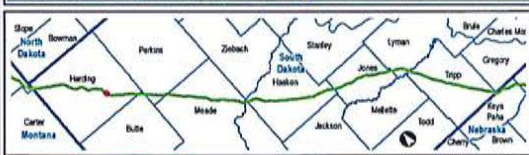
*CL DATE AT THE TIME OF RV APPROVAL - 2010-03-28
 **MP OF THE ISSUED CL AT THE TIME OF RV APPROVAL

KEYSTONE XL PROJECT
ROUTE VARIATION 0179-01

COUNTY	HARDING	DISTRICT	03
DATE	2010/03/28	DESIGNED BY	PS
REV NO.		REVISION	
A		REVISED FOR PLAN	2010/01/27
PRELIMINARY			
DATE	2010/01/27	PROJECT	0484/0179/01
DWG	PL-0484/0179/01	SHEET	01/020

PREPARED BY
exp Energy Services Inc.
 1-130345 5441
 F-130345 5523
 130 METROPOLITAN BLVD.
 TALLAHASSEE, FL 32308, USA
 WWW.EXP.COM

BUILDINGS • EARTH & ENVIRONMENT • ENERGY •
 INDUSTRIAL • INFRASTRUCTURE • SUSTAINABILITY



LEGEND

- MILEPOST**
- ROUTE VARIATION (RV)
- ISSUED CENTERLINE AT TIME OF RV**
- WATERBODY
- COUNTY LINE
- SECTION LINE

**CL DATE AT THE TIME OF RV APPROVAL - 2012-04-15
**MP OF THE ISSUED CL AT THE TIME OF RV APPROVAL

KEYSTONE XL PROJECT	
ROUTE VARIATION 0395-02	
COUNTY: HARDING	DRAWN BY: CL
STATE: SOUTH DAKOTA	CHECKED BY: PJ
REV. NO.: 1	DATE: 02/01/12
PRELIMINARY	
DATE: 02/01/12	PROJECT: HARDING/0395-02
DWG. NO.: S-PLAN-0395-02-2	SHEET: 1 of 1

DESIGNED BY:
exp Energy Services Inc.
T +1 850 365 5441
F +1 850 365 5523
1300 METROPOLITAN BLVD.
TALLAHASSEE, FL 32308, USA
www.exp.com

• BUILDINGS • EARTH & ENVIRONMENT • ENERGY •
• INDUSTRIAL • INFRASTRUCTURE • SUSTAINABILITY •

SOUTH DAKOTA ROUTE VARIATION - 0292-01 (2014 NAIP IMAGERY)



LEGEND

- MILEPOST**
- ROUTE VARIATION (RV)
- ISSUED CENTERLINE AT TIME OF RV*
- ▭ WATERBODY
- ▭ COUNTY LINE
- ▭ SECTION LINE

*CL DATE AT THE TIME OF RV APPROVAL - 2013-03-14
 **MP OF THE ISSUED CL AT THE TIME OF RV APPROVAL

KEYSTONE XL PROJECT
ROUTE VARIATION 0292-01

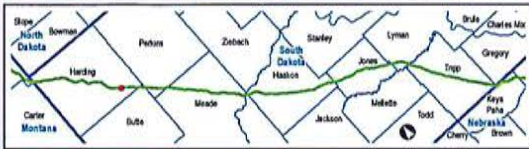
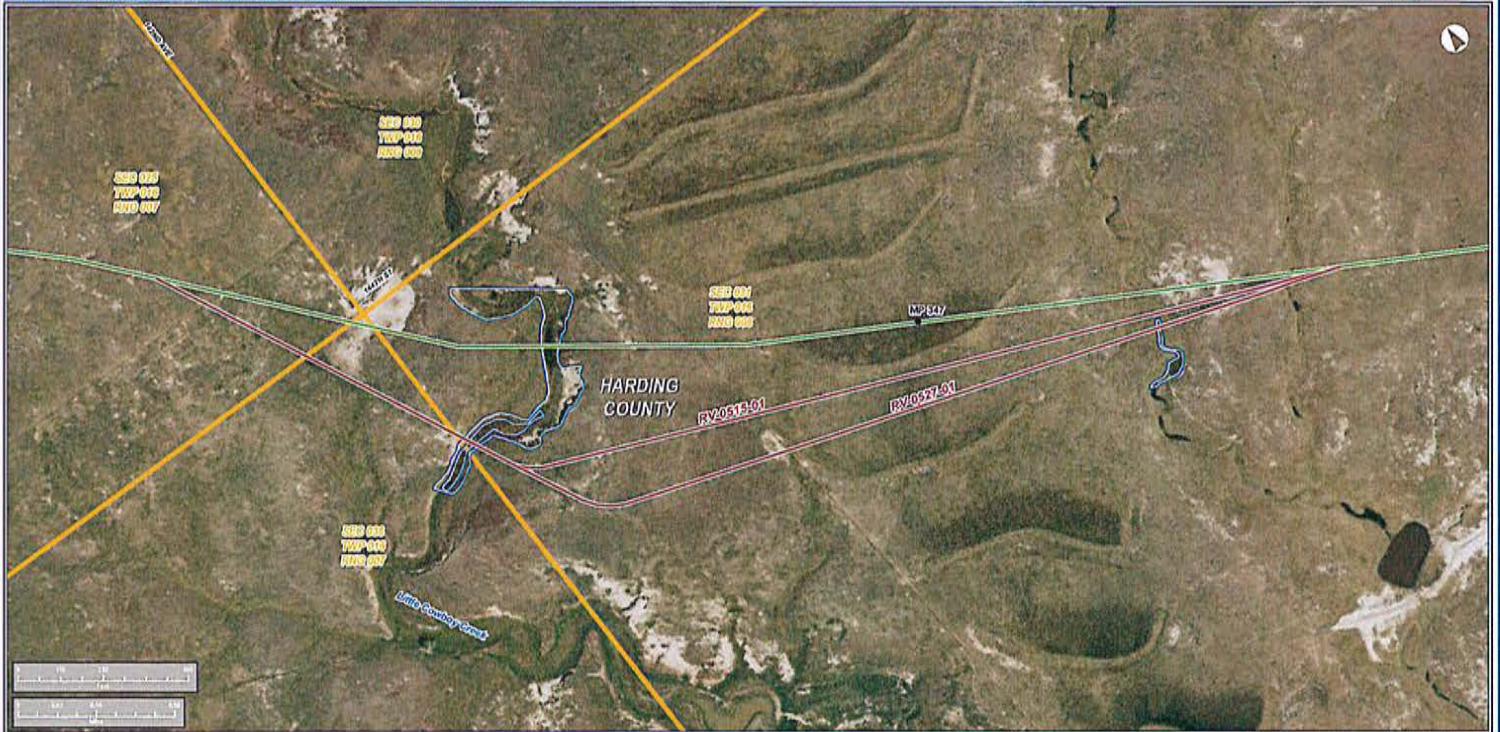
DESIGN: A000001	DESIGN BY: GI
DATE: 10/27/2014	DATE BY: PJ
REV NO: 000000	DATE: 2/14/15
A - ISSUED FOR REVIEW	
PRELIMINARY	
DATE: 2/14/15	PROJECT: 140741/0014
DWG: 14-04-000000000-0	SHEET: 14-0000

PROPOSED BY:
exp Energy Services Inc.
 T: +1 800 345 5441
 F: +1 850 385 0523
 1300 METROPOLITAN BLVD.
 TALLAHASSEE, FL 32308, USA
 www.exp.com

• BUILDINGS • EARTH & ENVIRONMENT • ENERGY •
 • INDUSTRIAL • INFRASTRUCTURE • SUSTAINABILITY •

KEYSTONE XL PROJECT

SOUTH DAKOTA ROUTE VARIATION - 0515-01 (2014 NAIP IMAGERY)



LEGEND

- MILEPOST**
- ROUTE VARIATION (RV)
- ISSUED CENTERLINE AT TIME OF RV*
- ☒ WATERBODY
- ☒ COUNTY LINE
- ☒ SECTION LINE

*CL DATE AT THE TIME OF RV APPROVAL - 2013-04-11
 **MP OF THE ISSUED CL AT THE TIME OF RV APPROVAL

KEYSTONE XL PROJECT			
ROUTE VARIATION 0515-01			
COUNTY	SOUTH DAKOTA	DISTRICT	SL
DATE	10/16/2013	DESIGNED BY	JP
REV NO:	1	REVISED BY	SL
A	EDGES FOR REVIEW		2/13/13
PRELIMINARY			
DATE	2/13/13	PROJECT NO.	142013/0131
DWG	R-0515-01-0515-01	SHEET	142013-01

PREPARED BY:
exp Energy Services Inc.
 T +1-800-345-5441
 F +1-800-345-5529
 1300 METROPOLITAN BLVD.
 TALLAHASSEE, FL 32308, USA
 www.exp.com

BUILDINGS - EARTH & ENVIRONMENT - ENERGY -
 INDUSTRIAL - INFRASTRUCTURE - SUSTAINABILITY

KEYSTONE XL PROJECT

SOUTH DAKOTA ROUTE VARIATION - 0527-01 (2014 NAIP IMAGERY)



LEGEND

- MILEPOST**
- ROUTE VARIATION (RV)
- ISSUED CENTERLINE AT TIME OF RV*
- WATERBODY
- COUNTY LINE
- SECTION LINE

*CL DATE AT THE TIME OF RV APPROVAL - 2013-06-11
 **MP OF THE ISSUED CL AT THE TIME OF RV APPROVAL

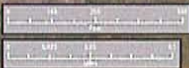
KEYSTONE XL PROJECT	
ROUTE VARIATION 0527-01	
COUNTY:	HARDING SD
DATE:	2014-01-21
REV. NO.:	001
DATE FOR REVIEW:	2014-01-21
PRELIMINARY	
DATE:	2014-01-21
PROJECT NO.:	14041/0414
REV. NO.:	001
DATE:	2014-01-21

PREPARED BY:
exp Energy Services Inc.
 T +1-800-345-5441
 F +1-850-365-5523
 1300 METROPOLITAN BLVD.
 TALLAHASSEE, FL 32308, USA
www.exp.com

• BUILDINGS • EARTH & ENVIRONMENT • ENERGY •
 • INDUSTRIAL • INFRASTRUCTURE • SUSTAINABILITY •

KEYSTONE XL PROJECT

SOUTH DAKOTA ROUTE VARIATION - 0258-01 (2014 NAIP IMAGERY)



LEGEND

- MILEPOST**
- ROUTE VARIATION (RV)
- ISSUED CENTERLINE AT TIME OF RV*
- ▭ WATERBODY
- ▭ COUNTY LINE
- ▭ SECTION LINE

*CL DATE AT THE TIME OF RV APPROVAL - 2012-03-14
 **MP OF THE ISSUED CL AT THE TIME OF RV APPROVAL

KEYSTONE XL PROJECT			
ROUTE VARIATION 0258-01			
DATE	ISSUED BY	DESIGNED BY	SCALE
STATE	REVISION	REVISED BY	DATE
REV NO.	REVISED BY	DATE	SCALE
PRELIMINARY			

PROVIDED BY
exp Energy Services Inc.
 T +1 800 365 5441
 F +1 508 365 5523
 130 METROPOLITAN BLVD.
 TALLAHASSEE, FL 32304, USA
 WWW.EXP.COM

• BUILDINGS • EARTH & ENVIRONMENT • ENERGY •
 INDUSTRIAL • INFRASTRUCTURE • SUSTAINABILITY •

KEYSTONE XL PROJECT



LEGEND

- MILEPOST**
- ROUTE VARIATION (RV)
- ISSUED CENTERLINE AT TIME OF RV*
- WATERBODY
- COUNTY LINE
- SECTION LINE

KEYSTONE XL PROJECT
ROUTE VARIATION 0215-01

COUNTY:	HARDING	SECTION:	02
STATE:	SOUTH DAKOTA	CREATED BY:	PD
REV. NO.:	A	REVISION:	ISSUED FOR REVIEW
		DATE:	2015-11-11

PRELIMINARY

PREPARED BY
exp Energy Services Inc.
T: +1 800.345.5441
F: +1 800.345.5553
1300 METROPOLITAN BLVD.
TALLAHASSEE, FL 32308, USA
www.exp.com

• BUILDINGS • EARTH & ENVIRONMENT • ENERGY •
• INDUSTRIAL • INFRASTRUCTURE • SUSTAINABILITY •



LEGEND

- MILEPOST**
- ROUTE VARIATION (RV)
- ISSUED CENTERLINE AT TIME OF RV*
- WATERBODY
- COUNTY LINE
- SECTION LINE

*CL DATE AT THE TIME OF RV APPROVAL - 2013-03-14
 **MP OF THE ISSUED CL AT THE TIME OF RV APPROVAL

KEYSTONE XL PROJECT
ROUTE VARIATION 0291-01

COUNTY: HARDING	DRAWN BY: CL
STATE: SOUTH DAKOTA	CHECKED BY: PD
REV. NO.: 1	DATE: 2014-01-27
A - ISSUED FOR REVIEW	
PRELIMINARY	

PROPOSED BY:
exp Energy Services Inc.
 T +1 800 345 5441
 F +1 850 345 5523
 1300 METROPOLITAN BLVD.
 TALLAHASSEE, FL 32308 USA
 www.exp.com

• BUSINESS • EARTH & ENVIRONMENT • ENERGY •
 • INDUSTRIAL • INFRASTRUCTURE • SUSTAINABILITY •

DATE: 2014-01-27	PROJECT: 0491-01	SHEET: 0491-01-01	SCALE: AS SHOWN
------------------	------------------	-------------------	-----------------



LEGEND

- MILEPOST**
- ROUTE VARIATION (RV)
- ISSUED CENTERLINE AT TIME OF RV*
- WATERBODY
- COUNTY LINE
- SECTION LINE

KEYSTONE XL PROJECT			
ROUTE VARIATION 0296-01			
LIMITS: SOUTH DAKOTA	DESIGNED BY: PS	DATE: 01/14/14	EDUCATED FOR REVIEW: 01/14/14
PRELIMINARY			

PROPOSED BY
exp Energy Services Inc.

T + 1.800.365.5441
F + 1.800.365.5523
1300 METROPOLITAN BLVD.
TALLAHASSEE, FL 32304, USA
www.exp.com

• BALANCE • EARTH ENVIRONMENT • ENERGY •
• INDUSTRIAL • INFRASTRUCTURE • SUSTAINABILITY •

*CL DATE AT THE TIME OF RV APPROVAL - 2012-03-14
**MP OF THE ISSUED CL AT THE TIME OF RV APPROVAL

SOUTH DAKOTA ROUTE VARIATION - 0514-01 (2014 NAIP IMAGERY)



LEGEND

- MILEPOST**
- ROUTE VARIATION (RV)
- ISSUED CENTERLINE AT TIME OF RV*
- ☒ WATERBODY
- ☒ COUNTY LINE
- ☒ SECTION LINE

*CL DATE AT THE TIME OF RV APPROVAL - 2013-04-11
**MP OF THE ISSUED CL AT THE TIME OF RV APPROVAL

KEYSTONE XL PROJECT
ROUTE VARIATION 0514-01

COUNTY: HARTS	DRAWN BY: CL
STATE: SOUTH DAKOTA	CHECKED BY: PD
REV NO: 1	REVISION: DATE
BY: EQ/ADP/AR/EA	
DATE: 2/15/13	
PROJECT: 142013/07/13	
DWG: 0514-01/0514-01	
ENET: 0514-01	

PRELIMINARY

PREPARED BY
esp Energy Services Inc.
T: +1 800 343 5441
F: +1 800 343 5523
1300 METROPOLITAN BLVD.
TALLAHASSEE, FL 32308, USA
www.esp.com

• BUILDINGS • EARTH & ENVIRONMENT • ENERGY •
• INDUSTRIAL • INFRASTRUCTURE • SUSTAINABILITY •

KEYSTONE XL PROJECT

SOUTH DAKOTA ROUTE VARIATION - 0527-02 (2014 NAIP IMAGERY)



LEGEND

- MILEPOST**
- ROUTE VARIATION (RV)
- ISSUED CENTERLINE AT TIME OF RV*
- ☒ WATERBODY
- ☒ COUNTY LINE
- ☒ SECTION LINE

*CL DATE AT THE TIME OF RV APPROVAL - 2013-04-11
 **MP OF THE ISSUED CL AT THE TIME OF RV APPROVAL

KEYSTONE XL PROJECT
ROUTE VARIATION 0527-02

COUNTY:	GRAND
STATE:	SOUTH DAKOTA
DESIGNED BY:	FD
DATE:	2014-01-15
REVISION:	
DATE:	
PRELIMINARY	
DATE:	
DESIGNED BY:	
PROJECT NO.:	
SCALE:	

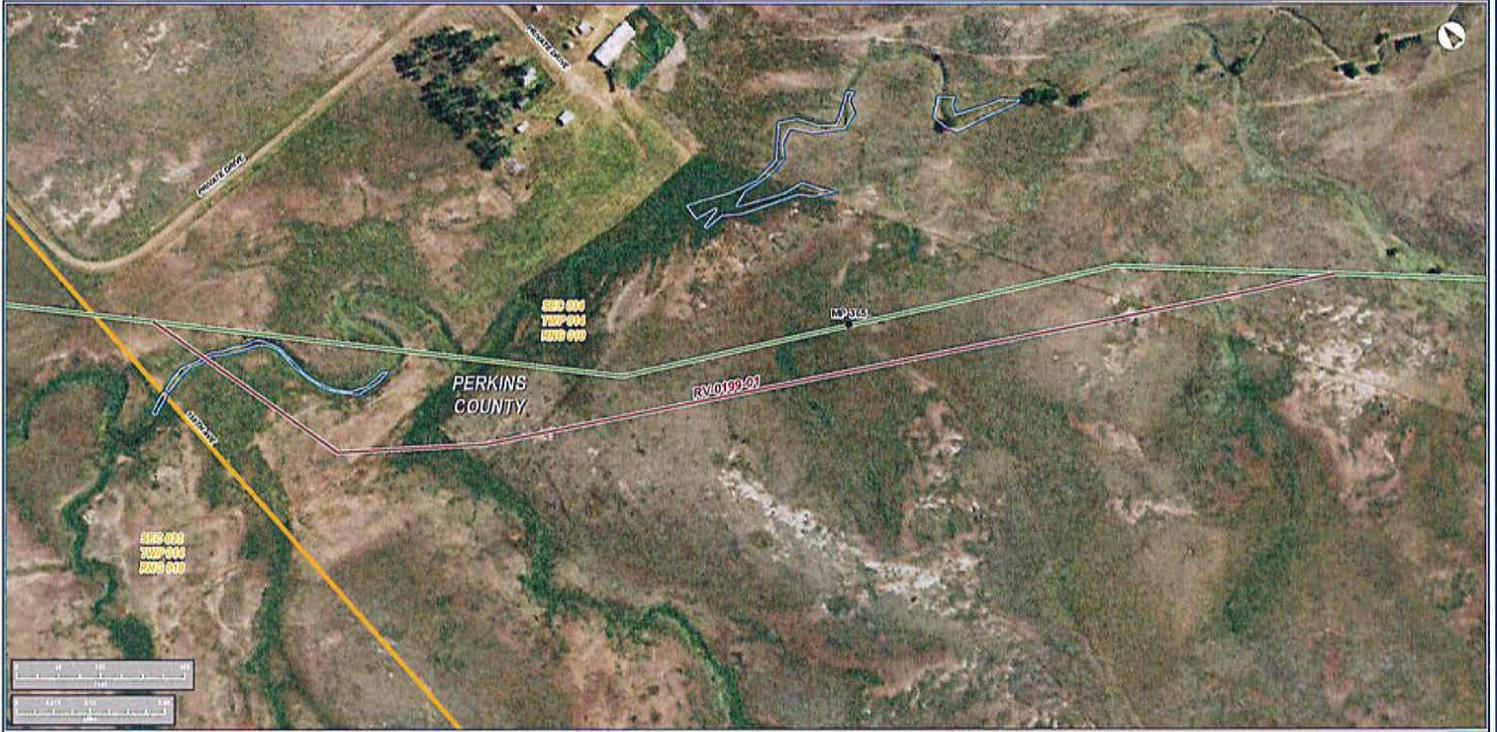
PREPARED BY
exp Energy Services Inc.
 T +1 850 355 5441
 F +1 850 355 5523
 1300 METROPOLITAN BLVD.
 TALLAHASSEE, FL 32308, USA
 WWW.EXP.ENERGY.COM

exp.

BUILDINGS • EARTH & ENVIRONMENT • ENERGY •
 INDUSTRIAL • INFRASTRUCTURE • SUSTAINABILITY •

KEYSTONE XL PROJECT

SOUTH DAKOTA ROUTE VARIATION - 0199-01 (2014 NAIP IMAGERY)



LEGEND

- MILEPOST**
- ROUTE VARIATION (RV)
- ISSUED CENTERLINE AT TIME OF RV*
- WATERBODY
- COUNTY LINE
- SECTION LINE

*CL DATE AT THE TIME OF RV APPROVAL - 2010-11-19
 **MP OF THE ISSUED CL AT THE TIME OF RV APPROVAL

KEYSTONE XL PROJECT
ROUTE VARIATION 0199-01

COUNTY: PERKINS	DRAWN BY: GJ	
STATE: SD/ND/MT	CHECKED BY: JP	
REV. NO:	REVISION	DATE
1	FOR DISCUSSION	2010.04
PRELIMINARY		
DATE:	PROJECT:	NO.:
2010.11	PERKINS	1408120119
DATE:	SCALE:	SHEET:
		1408120119

DESIGNED BY
exp Energy Services Inc.
 T: +1.800.345.5441
 F: +1.800.345.5023
 1300 METROPOLITAN BLVD.
 TALLAHASSEE, FL 32308 USA
 WWW.EXP.COM

• BUILDINGS • EARTH & ENVIRONMENT • ENERGY •
 • INDUSTRIAL • INFRASTRUCTURE • SUSTAINABILITY •

KEYSTONE XL PROJECT



LEGEND

- MILEPOST**
- ROUTE VARIATION (RV)
- ISSUED CENTERLINE AT TIME OF RV*
- WATERBODY
- COUNTY LINE
- SECTION LINE

*CL DATE AT THE TIME OF RV APPROVAL - 2013-06-11
 **MP OF THE ISSUED CL AT THE TIME OF RV APPROVAL

KEYSTONE XL PROJECT
ROUTE VARIATION 0470-04

COUNTY: PERKINS	DRAWN BY: SA
STATE: SOUTH DAKOTA	CHECKED BY: PJ
REV NO: 1	REVISION: DATE
A	ISSUED FOR REVIEW: 2014-01-13
PRELIMINARY	
DATE: 2014-01-13	PROJECT: 140613-01-01
DWG: 140613-01-01-001	SHEET: 0470-04

PREPARED BY:
exp Energy Services Inc.
 T: +1 800 345 5441
 F: +1 800 345 5523
 1300 METROPOLITAN BLVD.
 TALLAHASSEE, FL 32308, USA
 www.exp.com

exp.

• BUILDINGS • EARTH & ENVIRONMENT • ENERGY •
 • INDUSTRIAL • INFRASTRUCTURE • SUSTAINABILITY •

SOUTH DAKOTA ROUTE VARIATION - 0470-05 (2014 NAIP IMAGERY)



LEGEND

- MILEPOST**
- ROUTE VARIATION (RV)
- ISSUED CENTERLINE AT TIME OF RV*
- ☒ WATERBODY
- ☒ COUNTY LINE
- ☒ SECTION LINE

*CL DATE AT THE TIME OF RV APPROVAL - 2013-06-11
 **MP OF THE ISSUED CL AT THE TIME OF RV APPROVAL

KEYSTONE XL PROJECT			
ROUTE VARIATION 0470-05			
COUNTY	FEDS	DRAWN BY	CL
South Dakota			
DATE	REVISION	CHECKED BY	DATE
PRELIMINARY			
DATE	DESCRIPTION	DATE	BY

PROPOSED BY
exp Energy Services Inc.
 T: +1 850 385 5441
 F: +1 850 385 5523
 130 METROPOLITAN BLVD.
 TALLAHASSEE, FL 32308, USA
 www.exp.com

• BUILDINGS • EARTH & ENVIRONMENT • ENERGY •
 • INDUSTRIAL • INFRASTRUCTURE • SUSTAINABILITY •

KEYSTONE XL PROJECT

SOUTH DAKOTA ROUTE VARIATION - 0311-01 (2014 NAIP IMAGERY)



LEGEND

- MILEPOST**
- ROUTE VARIATION (RV)
- ISSUED CENTERLINE AT TIME OF RV*
- ▭ WATERBODY
- ▭ COUNTY LINE
- ▭ SECTION LINE

*CL DATE AT THE TIME OF RV APPROVAL - 2013-07-13
 **MP OF THE ISSUED CL AT THE TIME OF RV APPROVAL

**KEYSTONE XL PROJECT
ROUTE VARIATION 0311-01**

COUNTY:	PERKINS	DRAWN BY:	CS
STATE:	SOUTH DAKOTA	CHECKED BY:	PD
REV. NO.:	REVISION	DATE	
A	ISSUED FOR REVIEW	2014-02-11	
PRELIMINARY			
DATE:	2/15/14	PROJECT:	HAZEL/12/13

PROVIDED BY
exp Energy Services Inc.

T +1 850 365 5441
 F +1 850 365 5523
 150 METROPOLITAN BLVD.
 TALLAHASSEE, FL 32308, USA
www.exp.com

• BUILDINGS • EARTH & ENVIRONMENT • ENERGY •
 • INDUSTRIAL • INFRASTRUCTURE • SUSTAINABILITY •

DATE: 2/15/14 PROJECT: HAZEL/12/13 SHEET: 0498 OF 0498

KEYSTONE XL PROJECT



LEGEND

- MILEPOST**
- ROUTE VARIATION (RV)
- ISSUED CENTERLINE AT TIME OF RV*
- WATERBODY
- COUNTY LINE
- SECTION LINE

*CL DATE AT THE TIME OF RV APPROVAL - 2012-03-14
 **MP OF THE ISSUED CL AT THE TIME OF RV APPROVAL

KEYSTONE XL PROJECT
ROUTE VARIATION 0257-01

COUNTY: PERKINS	DRAWN BY: GJ	
STATE: SD/7th Dist-076	CHECKED BY: PJ	
REV NO:	REVISION	DATE
1	RELEASE FOR PERMITS	2014-01-21
PRELIMINARY		
DATE:	2/15/14	PROJECT NO:
	140141201120	DWG NO:
	PL-04A-03040402010	SHEET:
		PK-0257-01

APPROVED BY:

exp Energy Services Inc.
 T +1.800.345.5441
 F +1.800.345.5523
 1300 WEST TROPICAT AVENUE, SUITE 100
 TALLAHASSEE, FL 32308, USA
 www.exp.com

• BUILDINGS • EARTH & ENVIRONMENT • ENERGY •
 • INDUSTRIAL • INFRASTRUCTURE • SUSTAINABILITY •



LEGEND

- MILEPOST**
- ROUTE VARIATION (RV)
- ISSUED CENTERLINE AT TIME OF RV*
- ▭ WATERBODY
- ▭ COUNTY LINE
- ▭ SECTION LINE

*CL DATE AT THE TIME OF RV APPROVAL - 2013-06-11
 **MP OF THE ISSUED CL AT THE TIME OF RV APPROVAL

KEYSTONE XL PROJECT
ROUTE VARIATION 0470-09

COUNTY:	PERKINS	DRAWN BY:	GI
STATE:	SOUTH DAKOTA	CHECKED BY:	FD
REV. NO.:	00000000	DATE:	2013/06/11
A:	ISSUED FOR REVIEW	STATUS:	
PRELIMINARY			
DATE:	2013/06/11	PROJECT NO.:	140311/07/13

PREPARED BY
exp Energy Services Inc.
 T +1 850 345 5441
 F +1 850 345 5523
 1300 WETLANDS ATWAY BLVD.
 TALLAHASSEE, FL 32308, USA
 www.exp.com

exp.

• BUILDINGS • EARTH & ENVIRONMENT • ENERGY •
 • INDUSTRIAL • INFRASTRUCTURE • SUSTAINABILITY •

DATE: 2013/06/11 PROJECT NO.: 140311/07/13 SHEET: 04/04/09



LEGEND

- MILEPOST**
- ROUTE VARIATION (RV)
- ISSUED CENTERLINE AT TIME OF RV*
- ☒ WATERBODY
- ☒ COUNTY LINE
- ☒ SECTION LINE

*CL DATE AT THE TIME OF RV APPROVAL - 2013-04-11
 **MP OF THE ISSUED CL AT THE TIME OF RV APPROVAL

**KEYSTONE XL PROJECT
 ROUTE VARIATION 0470-10**

COUNTY:	PERKINS	DRAWN BY:	CS
STATE:	SOUTH DAKOTA	CHECKED BY:	FD
REV NO.:	REVISION	DATE	
A	ISSUED FOR REVIEW	2013-04-11	
PRELIMINARY			
DATE:	2/15/13	PROJECT CODE:	140303/01/01
DWG. NO.:	0470-10-001	SHEET:	0470-10

DESIGNED BY
exp Energy Services Inc.
 T +1.800.365.5441
 F +1.800.365.5023
 1300 METROPOLITAN BLVD.
 TALLAHASSEE, FL 32308, USA
www.exp.com

exp.

• BUILDINGS • EARTH & ENVIRONMENT • ENERGY •
 • INDUSTRIAL • INFRASTRUCTURE • SUSTAINABILITY •



LEGEND

- MILEPOST**
- ROUTE VARIATION (RV)
- ISSUED CENTERLINE AT TIME OF RV*
- ☒ WATERBODY
- ☒ COUNTY LINE
- ☒ SECTION LINE

*CL DATE AT THE TIME OF RV APPROVAL - 2010-11-18
 **MP OF THE ISSUED CL AT THE TIME OF RV APPROVAL

KEYSTONE XL PROJECT
ROUTE VARIATION 0199-02

COUNTY: MEADE	DRAWN BY: SJ
STATE: SOUTH DAKOTA	CHECKED BY: PJ
REV. NO.: 1	REVISION: 1
DATE: 2/15/12	DATE: 2/15/12
PRELIMINARY	
DATE: 2/15/12	PROJECT: 042011/01/12
FILE: 042011/01/01/01	SHEET: 0502

PREPARED BY
exp Energy Services Inc.
 T +1.800.345.5441
 F +1.800.345.5523
 1300 METROPOLITAN BLVD.
 TALLAHASSEE, FL 32304 USA
www.exp.com

exp.

• BUILDINGS • EARTH & ENVIRONMENT • ENERGY •
 • INDUSTRIAL • INFRASTRUCTURE • SUSTAINABILITY •

SOUTH DAKOTA ROUTE VARIATION - 0491-01 (2014 NAIP IMAGERY)



LEGEND

- MILEPOST**
- ROUTE VARIATION (RV)
- ISSUED CENTERLINE AT TIME OF RV*
- WATERBODY
- COUNTY LINE
- SECTION LINE

*CL DATE AT THE TIME OF RV APPROVAL - 2012-06-11
 **MP OF THE ISSUED CL AT THE TIME OF RV APPROVAL

KEYSTONE XL PROJECT
ROUTE VARIATION 0491-01

COUNTY: MEADE	DRAWN BY: SA	
STATE: 56th Sd 014	CHECKED BY: JPD	
REV. NO.:	REVISION:	DATE:
4	REVISED FOR REVIEW	20140414
PRELIMINARY		
DATE:	PROJECT NO.:	SHEET:
20140414	142761/0491-01	001

PROPERTY BY:
exp Energy Services Inc.
 T: +1.800.355.5441
 F: +1.800.355.5523
 1300 METROPOLE BLVD.,
 TALLAHASSEE, FL 32308, USA
 www.exp.com

• BUILDINGS • EARTH & ENVIRONMENT • ENERGY •
 • INDUSTRIAL • INFRASTRUCTURE • SUSTAINABILITY •

KEYSTONE XL PROJECT

SOUTH DAKOTA ROUTE VARIATION - 0470-06 (2014 NAIP IMAGERY)



LEGEND

- MILEPOST**
- ROUTE VARIATION (RV)
- ISSUED CENTERLINE AT TIME OF RV*
- ☒ WATERBODY
- ☒ COUNTY LINE
- ☒ SECTION LINE

*CL DATE AT THE TIME OF RV APPROVAL - 2012-06-11
 **MP OF THE ISSUED CL AT THE TIME OF RV APPROVAL

KEYSTONE XL PROJECT
ROUTE VARIATION 0470-06

COUNTY: MEADE	DRAWN BY: SJ
STATE: 50/7th DISTRICT	ORDERED BY: PJ
REV. NO.:	REVISION:
4	REQUEST FOR REVISION
	28/10/12
PRELIMINARY	
DATE:	2012-06-11
PROJECTOR:	140761/174116

PREPARED BY
exp Energy Services Inc.
 T: +1.800.385.5441
 F: +1.800.385.5523
 1300 METTROPOLITAN BLVD.
 TALLAHASSEE, FL 32308 USA
 WWW.EXP.COM

• BUILDINGS • EARTH & ENVIRONMENT • ENERGY •
 • INDUSTRIAL • INFRASTRUCTURE • SUSTAINABILITY •

DATE: 2012-06-11 PROJECTOR: 140761/174116 SHEET: 05/0504

KEYSTONE XL PROJECT



LEGEND

- MILEPOST**
- ROUTE VARIATION (RV)
- ISSUED CENTERLINE AT TIME OF RV*
- ☐ WATERBODY
- ☐ COUNTY LINE
- ☐ SECTION LINE

*CL DATE AT THE TIME OF RV APPROVAL - 2010-11-18
 **MP OF THE ISSUED CL AT THE TIME OF RV APPROVAL

KEYSTONE XL PROJECT
ROUTE VARIATION 0214-01

COUNTY: MEADE	DRAWN BY: SJ	
STATE: SOUTH DAKOTA	CHECKED BY: JF	
REV NO:	REVISION	DATE
1	ISSUED FOR REVIEW	2014-01
PRELIMINARY		
DATE:	2014-01-15	PROJECT CODE: 14081070101
DWG:	CL-0214-01-0214-01	SHEET: 04-01-01

Prepared by
exp Energy Services Inc.
 T +1.800.345.5441
 F +1.800.345.5523
 1300 W. EUROPEAN BLVD.
 TALLAHASSEE, FL 32308, USA
www.exp.com

• BUILDINGS • EARTH & ENVIRONMENT • ENERGY •
 • INDUSTRIAL • INFRASTRUCTURE • SUSTAINABILITY •



LEGEND

- MILEPOST**
- ROUTE VARIATION (RV)
- ISSUED CENTERLINE AT TIME OF RV*
- ☒ WATERBODY
- ☒ COUNTY LINE
- ☒ SECTION LINE

*CL DATE AT THE TIME OF RV APPROVAL - 2012-06-15
**MP OF THE ISSUED CL AT THE TIME OF RV APPROVAL

KEYSTONE XL PROJECT
ROUTE VARIATION 0395-03

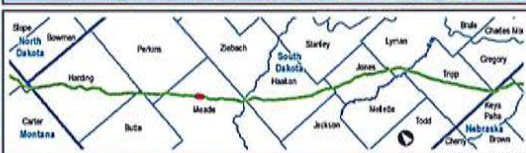
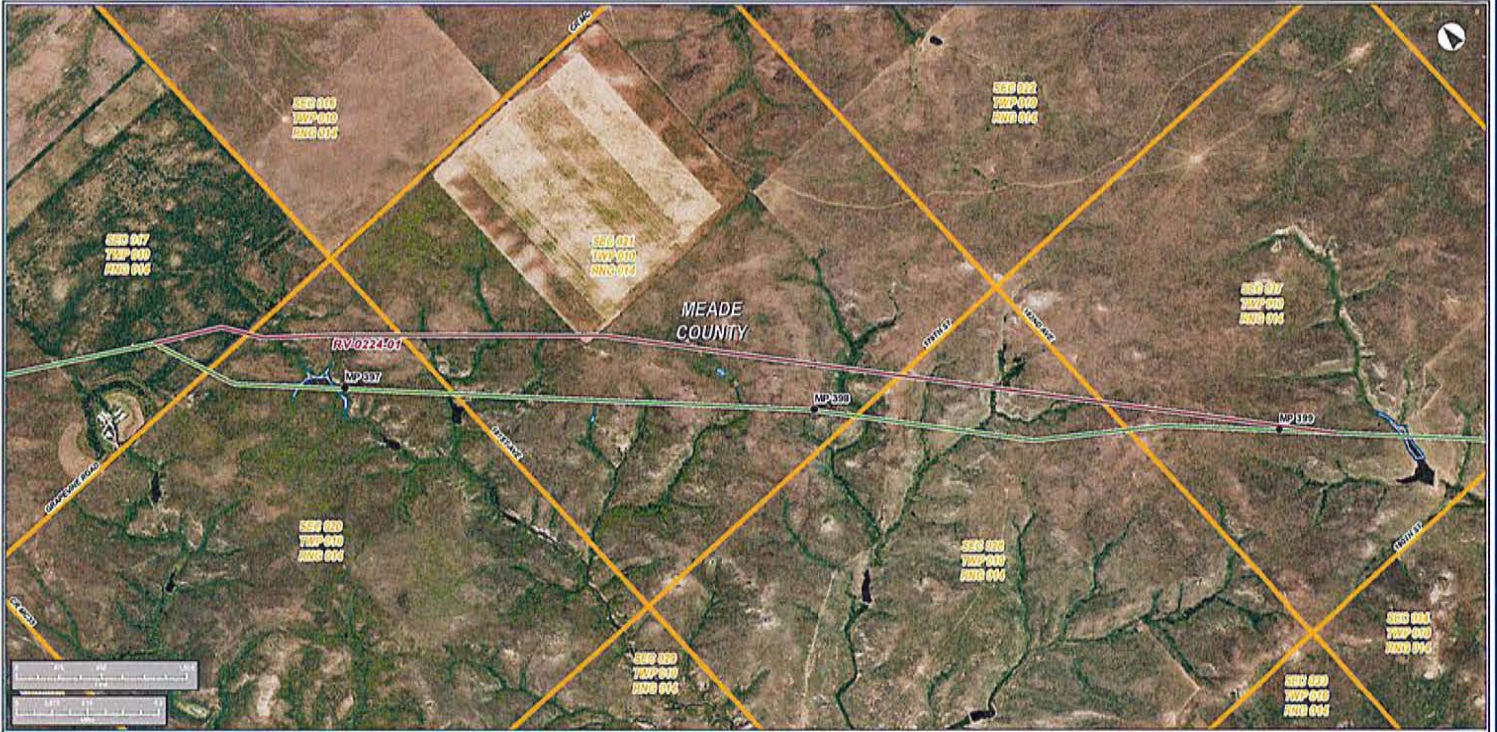
COUNTY:	MEADE	DRAWN BY:	GS
STATE:	SOUTH DAKOTA	CHECKED BY:	JD
REV. NO.:	000000000000000000	DATE:	2012/06/15
PRELIMINARY			
DATE:	2012-07-11	PROJECT NO.:	1406110713
SHE:	04-04-04-04-04-04	SHEET:	04-04-04

PREPARED BY:
exp Energy Services Inc.
P +1 850 385 5441
F +1 850 385 5023
130 METROPOLITAN BLVD.
TALLAHASSEE, FL 32308 USA
www.exp.com

exp.

• BUILDINGS • EARTH & ENVIRONMENT • ENERGY •
• INDUSTRIAL • INFRASTRUCTURE • SUSTAINABILITY •

SOUTH DAKOTA ROUTE VARIATION - 0224-01 (2014 NAIP IMAGERY)



LEGEND

- MILEPOST**
- ROUTE VARIATION (RV)
- ISSUED CENTERLINE AT TIME OF RV*
- ▭ WATERBODY
- ▭ COUNTY LINE
- ▭ SECTION LINE

*CL DATE AT THE TIME OF RV APPROVAL - 2010-11-18
 **MP OF THE ISSUED CL AT THE TIME OF RV APPROVAL

KEYSTONE XL PROJECT
ROUTE VARIATION 0224-01

COUNTY	MEADE	DRAWN BY	GI
STATE	SOUTH DAKOTA	CHECKED BY	JP
REV NO.	1	DATE	2014-11
A	ISSUED FOR REVIEW		
PRELIMINARY			
DATE	2014-11	PROJECT NO.	1409110113
DWG.	0224-01-001	SHEET	01/02

PREPARED BY
exp Energy Services Inc.
 P +1 813 345 5441
 F +1 813 345 5523
 1300 W. FLORISSANT BLVD.
 TALLAHASSEE, FL 32308 USA
 www.exp.com

exp.

• BUILDINGS • EARTH & ENVIRONMENT • ENERGY •
 • INDUSTRIAL • INFRASTRUCTURE • SUSTAINABILITY •

KEYSTONE XL PROJECT



LEGEND

- MILEPOST**
- ROUTE VARIATION (RV)
- ISSUED CENTERLINE AT TIME OF RV*
- WATERBODY
- COUNTY LINE
- SECTION LINE

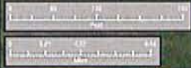
*CL DATE AT THE TIME OF RV APPROVAL - 2013-03-14
 **MP OF THE ISSUED CL AT THE TIME OF RV APPROVAL

KEYSTONE XL PROJECT			
ROUTE VARIATION 0270-01			
COUNTY:	MEADE	DRAWN BY:	SL
STATE:	South Dakota	ORDERED BY:	FD
REV. NO.:	1	REVISION:	DATE
A	ISSUED FOR REVIEW		2014/01/21
PRELIMINARY			
DATE:	2014/01/21	PROJECT NO.:	140701070101

PROVIDED BY:
exp Energy Services Inc.
 T: +1 850 335 5441
 F: +1 850 335 0023
 130 METROPOLITAN BLVD.
 TALLAHASSEE, FL 32308, USA
 www.exp.com

• BUILDINGS • EARTH & ENVIRONMENT • ENERGY •
 • INDUSTRIAL • INFRASTRUCTURE • SUSTAINABILITY •

DATE: 2014/01/21 PROJECT NO.: 140701070101 SHEET: 05/0528



LEGEND

- MILEPOST**
- ROUTE VARIATION (RV)
- ISSUED CENTERLINE AT TIME OF RV*
- ☒ WATERBODY
- ☒ COUNTY LINE
- ☒ SECTION LINE

*CL DATE AT THE TIME OF RV APPROVAL - 2012-04-11
**MP OF THE ISSUED CL AT THE TIME OF RV APPROVAL

**KEYSTONE XL PROJECT
ROUTE VARIATION 0512-01**

COUNTY:	MEADE	DRAWN BY:	CS
STATE:	SOUTH DAKOTA	CHECKED BY:	PD
REV. NO.:	REVISION	DATE	
1	EDUCATED FOR REVIEW	2012-04-11	
PRELIMINARY			
DATE:	2/15/12	PROJECT CODE:	140201/01/01
DWG. NO.:	0512-01-01	SHEET:	002/002

PREPARED BY
exp Energy Services Inc.
T +1.800.345.5441
F +1.800.345.5023
1300 METROPOLITAN BLVD.
FALLASSSEE, FL 32088, USA
www.exp.com

• BUILDINGS • EARTH & ENVIRONMENT • ENERGY •
• INDUSTRIAL • INFRASTRUCTURE • SUSTAINABILITY •



LEGEND

- MILEPOST**
- ROUTE VARIATION (RV)
- ISSUED CENTERLINE AT TIME OF RV*
- WATERBODY
- COUNTY LINE
- SECTION LINE

*CL DATE AT THE TIME OF RV APPROVAL - 2012-06-11
 **MP OF THE ISSUED CL AT THE TIME OF RV APPROVAL

KEYSTONE XL PROJECT
ROUTE VARIATION 0470-07

COUNTY:	MEADE	DRAWN BY:	SL
STATE:	SOUTH DAKOTA	CHECKED BY:	PT
REV. NO.:	1	REVISION:	DATE
1	ISSUED FOR REVIEW		2014-07-01
PRELIMINARY			
DATE:	2014-07-01	PROJECT:	0470-07/01-01
DWG. NO.:	0470-07/01-01-01	SHEET:	0470-07

PROPOSED BY:
exp Energy Services Inc.
 T: +1.800.365.5441
 F: +1.800.365.5523
 ONE METROPOLITAN BLVD.
 TALLAHASSEE, FL 32308 USA
 www.exp.com

exp.

• BUILDINGS • EARTH & ENVIRONMENT • ENERGY •
 • INDUSTRIAL • INFRASTRUCTURE • SUSTAINABILITY •



LEGEND

- MILEPOST**
- ROUTE VARIATION (RV)
- ISSUED CENTERLINE AT TIME OF RV*
- ☒ WATERBODY
- ☒ COUNTY LINE
- ☒ SECTION LINE

*CL DATE AT THE TIME OF RV APPROVAL - 2010-11-18
 **MP OF THE ISSUED CL AT THE TIME OF RV APPROVAL

KEYSTONE XL PROJECT
ROUTE VARIATION 0215-02

COUNTY	MEADE	DRAWN BY	GS
STATE	SOUTH DAKOTA	CHECKED BY	PS
REV NO.	REVISION	DATE	
1	ISSUED FOR REVIEW	2014-07-24	
PRELIMINARY			
DATE	2014-07-24	PROJECT	WALSH/NOVA
DWG.	0215-02-02	SHEET	14 OF 24

PREPARED BY
exp Energy Services Inc.
 T: +1 850 345 5441
 F: +1 850 345 5523
 1300 W. TROPICAN BLVD.
 TALLAHASSEE, FL 32308, USA

exp.

• BUILDINGS • EARTH & ENVIRONMENT • ENERGY •
 • INDUSTRIAL • INFRASTRUCTURE • SUSTAINABILITY •

SOUTH DAKOTA ROUTE VARIATION - 0478-01 (2014 NAIP IMAGERY)



LEGEND

- MILEPOST**
- ROUTE VARIATION (RV)
- ISSUED CENTERLINE AT TIME OF RV*
- ☒ WATERBODY
- ☒ COUNTY LINE
- ☒ SECTION LINE

*CL DATE AT THE TIME OF RV APPROVAL - 2012-04-11
 **MP OF THE ISSUED CL AT THE TIME OF RV APPROVAL

KEYSTONE XL PROJECT
ROUTE VARIATION 0478-01

COUNTY:	MEADE	DRAWN BY:	CS
STATE:	SD/7th Edition	CHECKED BY:	PS
REV. NO.:	REVISION	DATE	
1	ISSUED FOR REVIEW	2014-04-11	
PRELIMINARY			
DATE:	2/15/14	PROJECT CODE:	140614-01-14
DWG. NO.:	0478-01-001	SHEET:	0478-01

POWER BY
exp Energy Services Inc.
 T: +1.800.545.5441
 F: +1.800.545.5523
 1300 W. TROPICATAN BLVD.
 TALLAHASSEE, FL 32308, USA
www.exp.com

exp.

• BUILDINGS • EARTH & ENVIRONMENT • ENERGY •
 • INDUSTRIAL • INFRASTRUCTURE • SUSTAINABILITY •

KEYSTONE XL PROJECT



LEGEND

- MILEPOST**
- ROUTE VARIATION (RV)
- ISSUED CENTERLINE AT TIME OF RV*
- ☒ WATERBODY
- ☒ COUNTY LINE
- ☒ SECTION LINE

*CL DATE AT THE TIME OF RV APPROVAL - 2010-03-14
 **MP OF THE ISSUED CL AT THE TIME OF RV APPROVAL

KEYSTONE XL PROJECT			
ROUTE VARIATION 0257-02			
COUNTY: MEADE	DRAWN BY: SA	DATE:	
STATE: SOUTH DAKOTA	CHECKED BY: JY	DATE:	
REV. NO.:	REVISION:	DATE:	
A	ROUTE VARIATION	2010/03/14	
PRELIMINARY			
DATE:	DESIGNED:	PROJECT NO.:	REV. NO.:

DESIGNED BY
exp Energy Services Inc.
 T. 1-800-345-5441
 F. 1-800-345-5523
 1300 METROPOLITAN BLVD.
 TALLAHASSEE, FL 32308 USA
 www.exp.com

• BUILDINGS • EARTH & ENVIRONMENT • ENERGY •
 • INDUSTRIAL • INFRASTRUCTURE • SUSTAINABILITY •



LEGEND

- MILEPOST**
- ROUTE VARIATION (RV)
- ISSUED CENTERLINE AT TIME OF RV*
- ▭ WATERBODY
- ▭ COUNTY LINE
- ▭ SECTION LINE

*CL DATE AT THE TIME OF RV APPROVAL - 2013-07-13
 **MP OF THE ISSUED CL AT THE TIME OF RV APPROVAL

KEYSTONE XL PROJECT
ROUTE VARIATION 0252-01

COUNTY: MEADE	DRAWN BY: GJ
STATE: SOUTH DAKOTA	CHECKED BY: FD
REV NO: 1	REVISION: DATE
A	ISSUED FOR REVIEW: 2014-01-21
PRELIMINARY	
DATE: 21-Feb-14	PROJECT: 04031176124
DWG: 04031176124-01	SHEET: 04031176124-01

PREPARED BY
exp Energy Services Inc.
 T +1.800.345.5441
 F +1.800.345.5023
 1300 METROPOLITAN BLVD.
 TALLAHASSEE, FL 32308 USA
 000110 000

• BUILDINGS • EARTH & ENVIRONMENT • ENERGY •
 • INDUSTRIAL • INFRASTRUCTURE • SUSTAINABILITY •



LEGEND

- MILEPOST**
- ROUTE VARIATION (RV)
- ISSUED CENTERLINE AT TIME OF RV*
- ☒ WATERBODY
- ☒ COUNTY LINE
- ☒ SECTION LINE

*CL DATE AT THE TIME OF RV APPROVAL - 2012-04-19
 **MP OF THE ISSUED CL AT THE TIME OF RV APPROVAL

KEYSTONE XL PROJECT
ROUTE VARIATION 0384-01

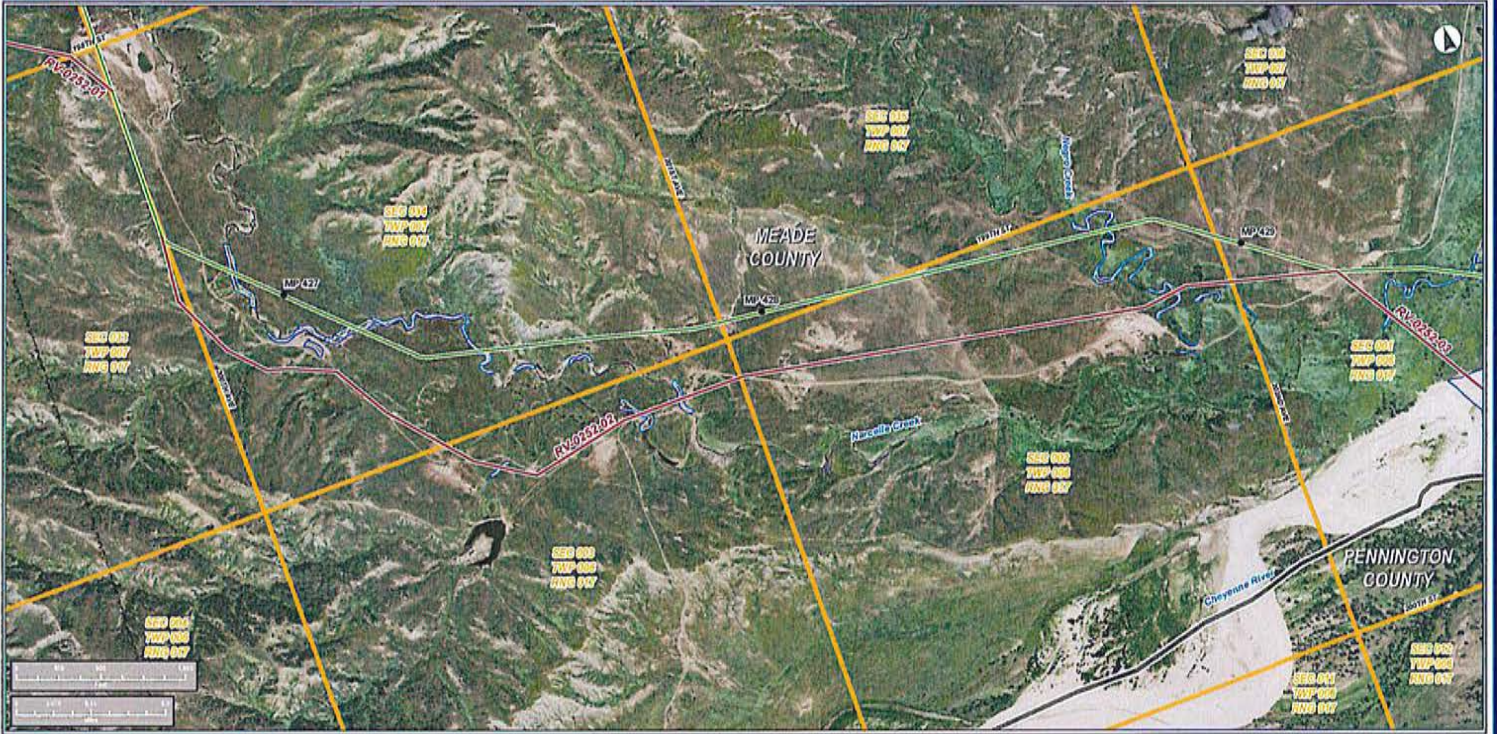
COUNTY: MEADE	DRAWN BY: SA	
STATE: SOUTH DAKOTA	CHECKED BY: JY	
REV NO:	REVISION	DATE
A	ISSUED FOR REVIEW	2/14/13
PRELIMINARY		
DATE:	PROJECT:	SHEET:

PREPARED BY
exp Energy Services Inc.
 T: 1-800-385-5441
 F: 1-800-385-5523
 1300 METROPOLITAN BLVD.
 TALLAHASSEE, FL 32308, USA
 www.exp.com

exp.

• BUILDINGS • EARTH & ENVIRONMENT • ENERGY •
 • INDUSTRIAL • INFRASTRUCTURE • SUSTAINABILITY •

DATE: 2/14/13 PROJECT: 142001/001/01 SHEET: 001 OF 002



LEGEND

- MILEPOST**
- ROUTE VARIATION (RV)
- ISSUED CENTERLINE AT TIME OF RV*
- WATERBODY
- COUNTY LINE
- SECTION LINE

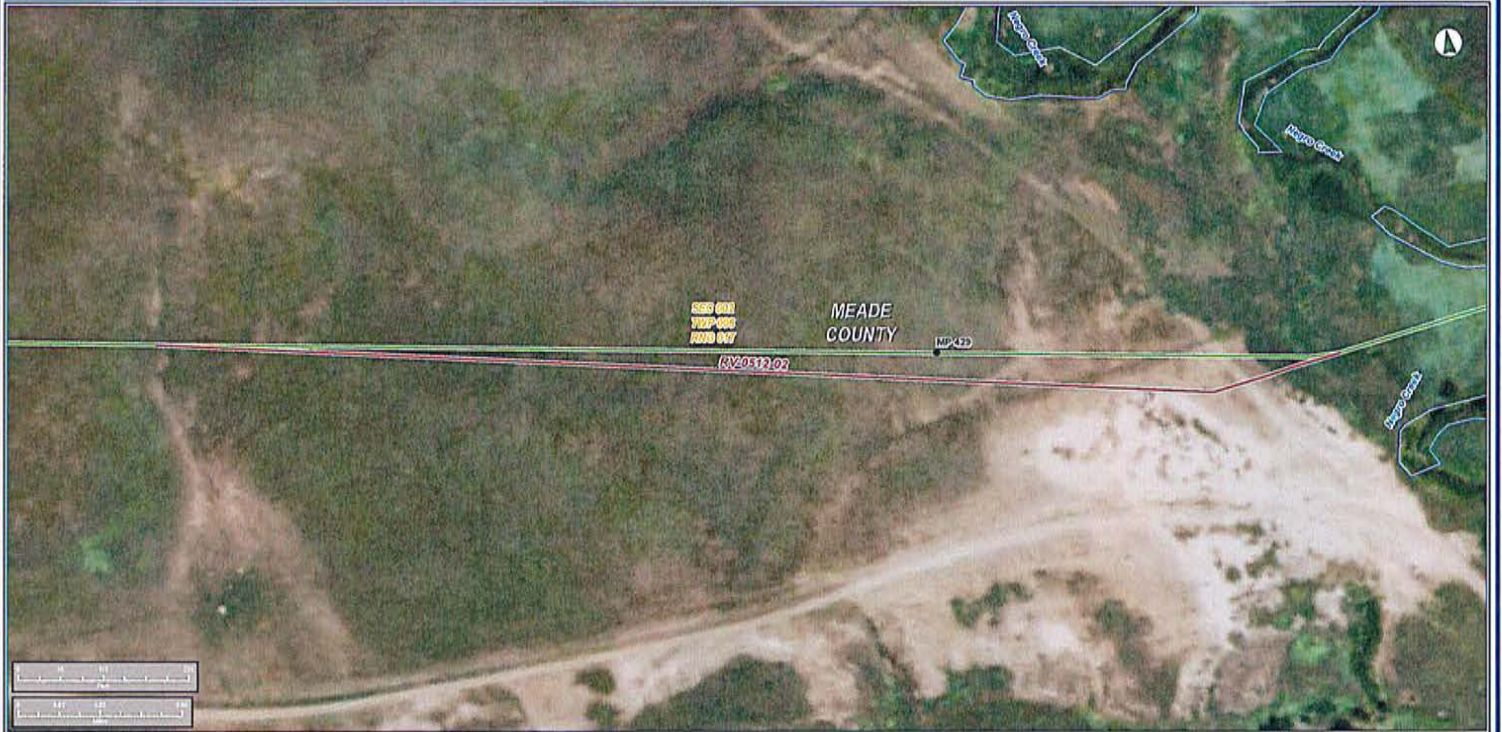
*CL DATE AT THE TIME OF RV APPROVAL - 2012-07-13
 **MP OF THE ISSUED CL AT THE TIME OF RV APPROVAL

KEYSTONE XL PROJECT
ROUTE VARIATION 0252-02

COUNTY:	MEADE	DRAWN BY:	CS
STATE:	SOUTH DAKOTA	CHECKED BY:	FD
REV. NO.:	1	REVISION:	DATE:
A	ISSUED FOR REVIEW:	2014-07-01	
PRELIMINARY			
DATE:	21/04/12	PROJECT:	SAKVAL/07114
DRW:	CS/MS/001/001-02	SHEET:	04/20/02

PREPARED BY
 exp Energy Services Inc.
 T: +1 800 365 5441
 F: +1 800 365 9523
 1300 METROPOLITAN BLVD.
 TALLAHASSEE, FL 32308, USA
 www.exp.com

• BUILDINGS • EARTH & ENVIRONMENT • ENERGY •
 • INDUSTRIAL • INFRASTRUCTURE • SUSTAINABILITY •



LEGEND

- MILEPOST**
- ROUTE VARIATION (RV)
- ISSUED CENTERLINE AT TIME OF RV*
- WATERBODY
- COUNTY LINE
- SECTION LINE

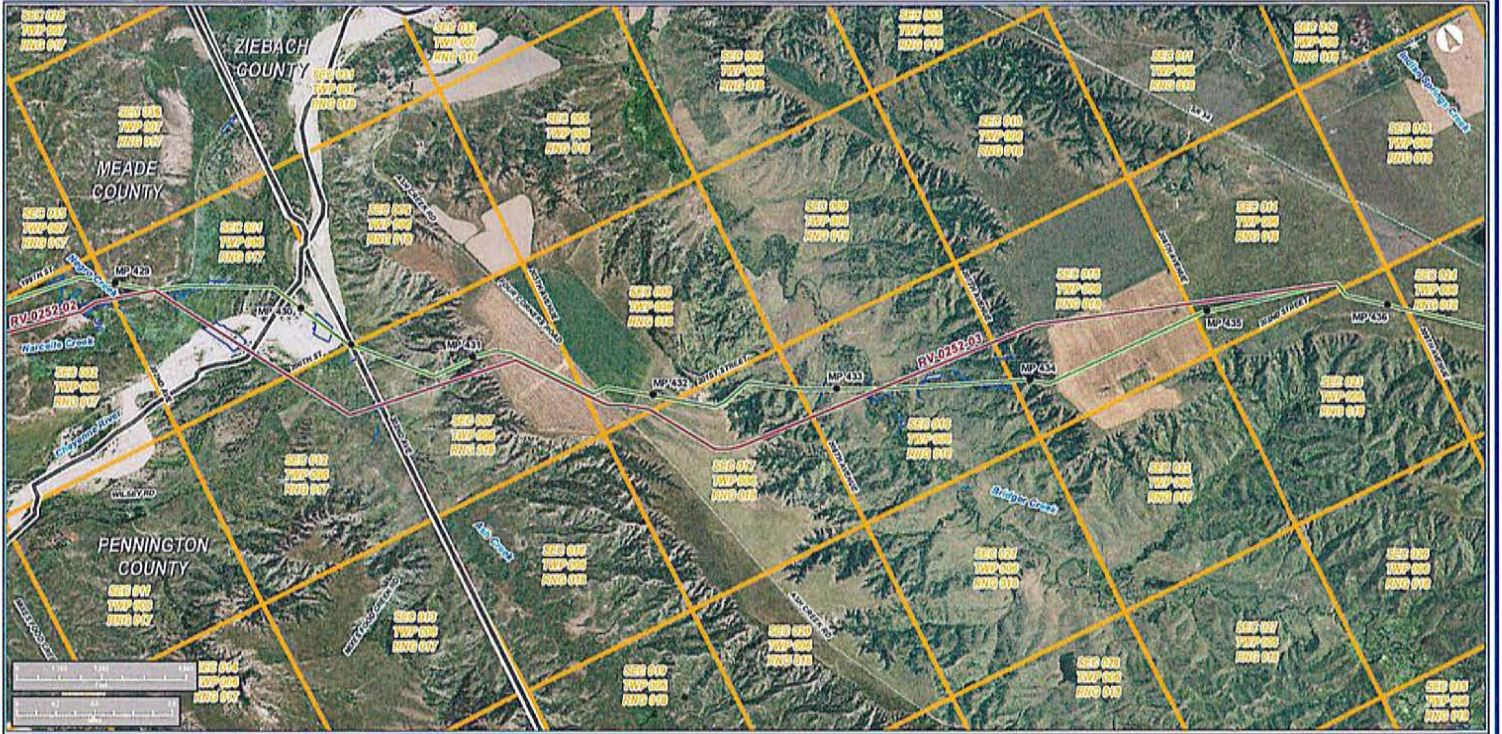
*CL DATE AT THE TIME OF RV APPROVAL - 2013-06-11
 **MP OF THE ISSUED CL AT THE TIME OF RV APPROVAL

KEYSTONE XL PROJECT
ROUTE VARIATION 0512-02

COUNTY:	MEADE	DRAWN BY:	CS
STATE:	SOUTH DAKOTA	CHECKED BY:	FS
REV. NO.:	REVISION	DATE	
1	EDUCATION	2014/12/1	
PRELIMINARY			
DATE:	2/15/15	PROJECT:	14031/1413
DRW:	14-04-0001/0113-02	HEET:	1403102

PREPARED BY
exp Energy Services Inc.
 T +1.800.365.5441
 F +1.800.365.5523
 1300 METROPOLITAN BLVD.
 TALLAHASSEE, FL 32308, USA
www.exp.com

• BUILDINGS • EARTH & ENVIRONMENT • ENERGY •
 • INDUSTRIAL • INFRASTRUCTURE • SUSTAINABILITY •



LEGEND

- MILEPOST**
- ROUTE VARIATION (RV)
- ISSUED CENTERLINE AT TIME OF RV*
- ☒ WATERBODY
- ▭ COUNTY LINE
- ▭ SECTION LINE

*CL DATE AT THE TIME OF RV APPROVAL - 2012-07-13
 **MP OF THE ISSUED CL AT THE TIME OF RV APPROVAL

KEYSTONE XL PROJECT
ROUTE VARIATION 0252-03

COUNTY	MEADE	DRAWN BY	CS
STATE	SOUTH DAKOTA	CHECKED BY	FD
REV NO.	REVISION	DATE	
A	ROUTE VARIATION	2014-01-15	
PRELIMINARY			
DATE	2014-01-15	PROJECT NO.	1403117414
DWG.	05-04-0000-000-00	SHEET	04-0000

PREPARED BY
 exp Energy Services Inc.
 T +1.850.345.5441
 F +1.850.345.5523
 130 METROPOLITAN BLVD.
 TALLAHASSEE, FL 32308 USA
 WWW.EXP.COM

• BUILDINGS • EARTH & ENVIRONMENT • ENERGY •
 • INDUSTRIAL • INFRASTRUCTURE • SUSTAINABILITY •



LEGEND

- MILEPOST**
- ROUTE VARIATION (RV)
- ISSUED CENTERLINE AT TIME OF RV*
- ☒ WATERBOUY
- ☒ COUNTY LINE
- ☒ SECTION LINE

*CL DATE AT THE TIME OF RV APPROVAL: 2013-06-11
 **MP OF THE ISSUED CL AT THE TIME OF RV APPROVAL

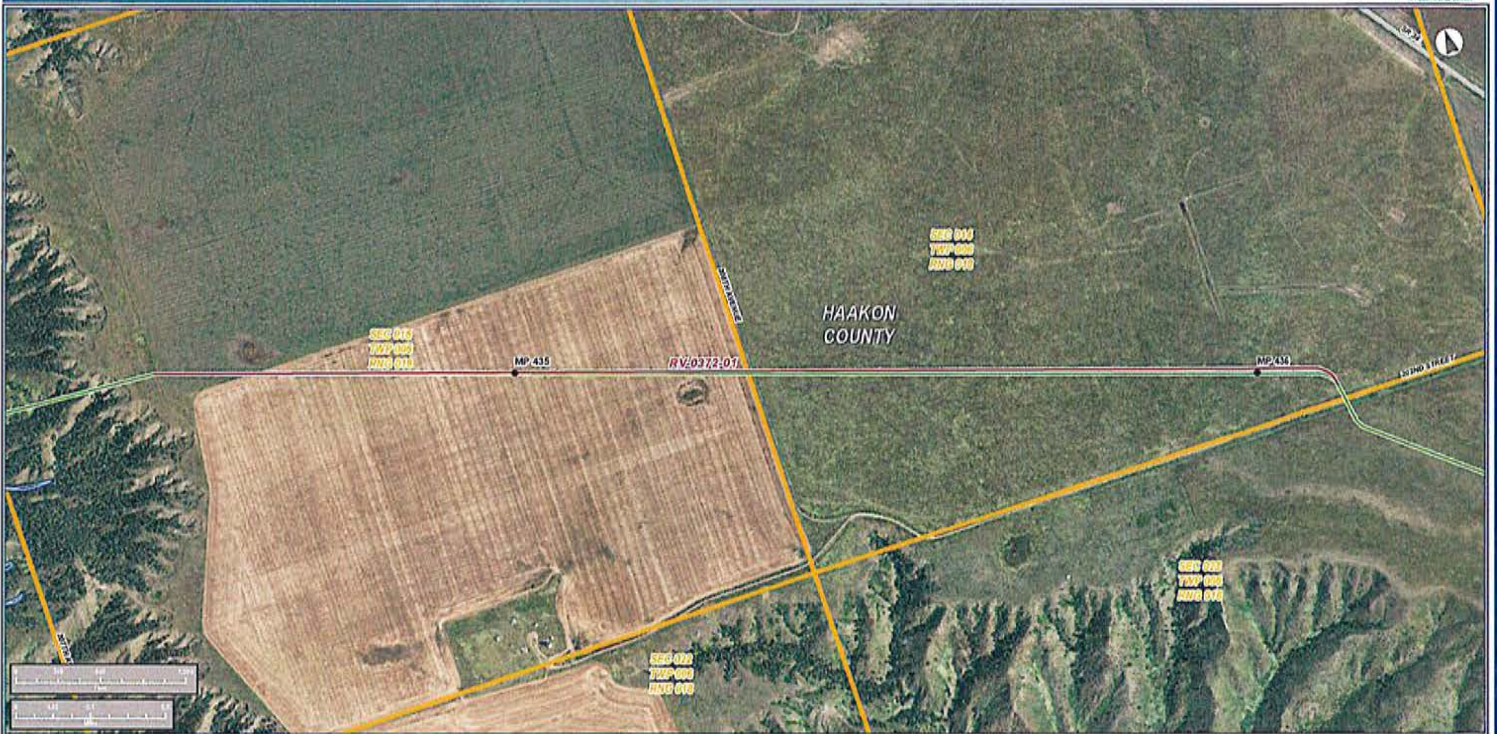
KEYSTONE XL PROJECT
ROUTE VARIATION 0543-01

COUNTY:	SOUTH DAKOTA	DRAWN BY:	CS
STATE:	SOUTH DAKOTA	CHECKED BY:	AP
REV NO:	1	REVISION:	DATE
A	ISSUED FOR REVIEW		2014-01-14
PRELIMINARY			
DATE:	2013-06-11	PROJECT:	1400100101
APP:	CS	APP:	AP

DESIGNED BY
exp Energy Services Inc.
 T: +1.800.365.5441
 F: +1.800.365.5523
 1300 METROPOLITAN BLVD.
 TALLAHASSEE, FL 32304 USA
 WWW.EXP.COM

exp.

• BUILDINGS • EARTH & ENVIRONMENT • ENERGY •
 • INDUSTRIAL • INFRASTRUCTURE • SUSTAINABILITY •



LEGEND

- MILEPOST**
- ROUTE VARIATION (RV)
- ISSUED CENTERLINE AT TIME OF RV*
- ☒ WATERBODY
- ☒ COUNTY LINE
- ☒ SECTION LINE

*CL DATE AT THE TIME OF RV APPROVAL - 2012-09-18
 **MP OF THE ISSUED CL AT THE TIME OF RV APPROVAL

KEYSTONE XL PROJECT	
ROUTE VARIATION 0372-01	
COUNTY: HAakon	DRAWN BY: JS
STATE: SOUTH DAKOTA	CHK'D BY: JD
REV NO:	REVISION DATE
A	EDUC FOR REVIEW 20140727
PRELIMINARY	
DATE: 20140727	PRODUCTION: 140812014

PREPARED BY
 exp Energy Services Inc.
 T +1.800.365.5441
 F +1.800.365.5023
 1300 METROPOLITAN BLVD.
 TALLAHASSEE, FL 32308, USA

exp.

• BUILDINGS • EARTH & ENVIRONMENT • ENERGY •
 • INDUSTRIAL • INFRASTRUCTURE • SUSTAINABILITY •

DATE: 20140727 PRODUCTION: 140812014 SHEET: 01 OF 01



LEGEND

- MILEPOST**
- ROUTE VARIATION (RV)
- ISSUED CENTERLINE AT TIME OF RV*
- ☒ WATERBODY
- ☒ COUNTY LINE
- ☒ SECTION LINE

*CL DATE AT THE TIME OF RV APPROVAL - 2013-06-11
 **MP OF THE ISSUED CL AT THE TIME OF RV APPROVAL

**KEYSTONE XL PROJECT
ROUTE VARIATION 0455-01**

COUNTY: HAakon	DRAWN BY: SL
STATE: SOUTH DAKOTA	ORDERED BY: PD
REV. NO.:	REVISION
DATE:	DATE:
PRELIMINARY	
DATE: 2/15/13	PROJECT: 0455-01
DWG: 0455-01-001	SHEET: 0455-01

PREPARED BY
 exp Energy Services Inc.
 T: +1.800.365.5441
 F: +1.800.365.5523
 1300 METROPOLITAN BLVD.
 TALLAHASSEE, FL 32308, USA

• BUILDINGS • EARTH & ENVIRONMENT • ENERGY •
 • INDUSTRIAL • INFRASTRUCTURE • SUSTAINABILITY •



LEGEND

- MILEPOST**
- ROUTE VARIATION (RV)
- ISSUED CENTERLINE AT TIME OF RV*
- WATERBODY
- COUNTY LINE
- SECTION LINE

*CL DATE AT THE TIME OF RV APPROVAL - 2012-01-18
 **MP OF THE ISSUED CL AT THE TIME OF RV APPROVAL

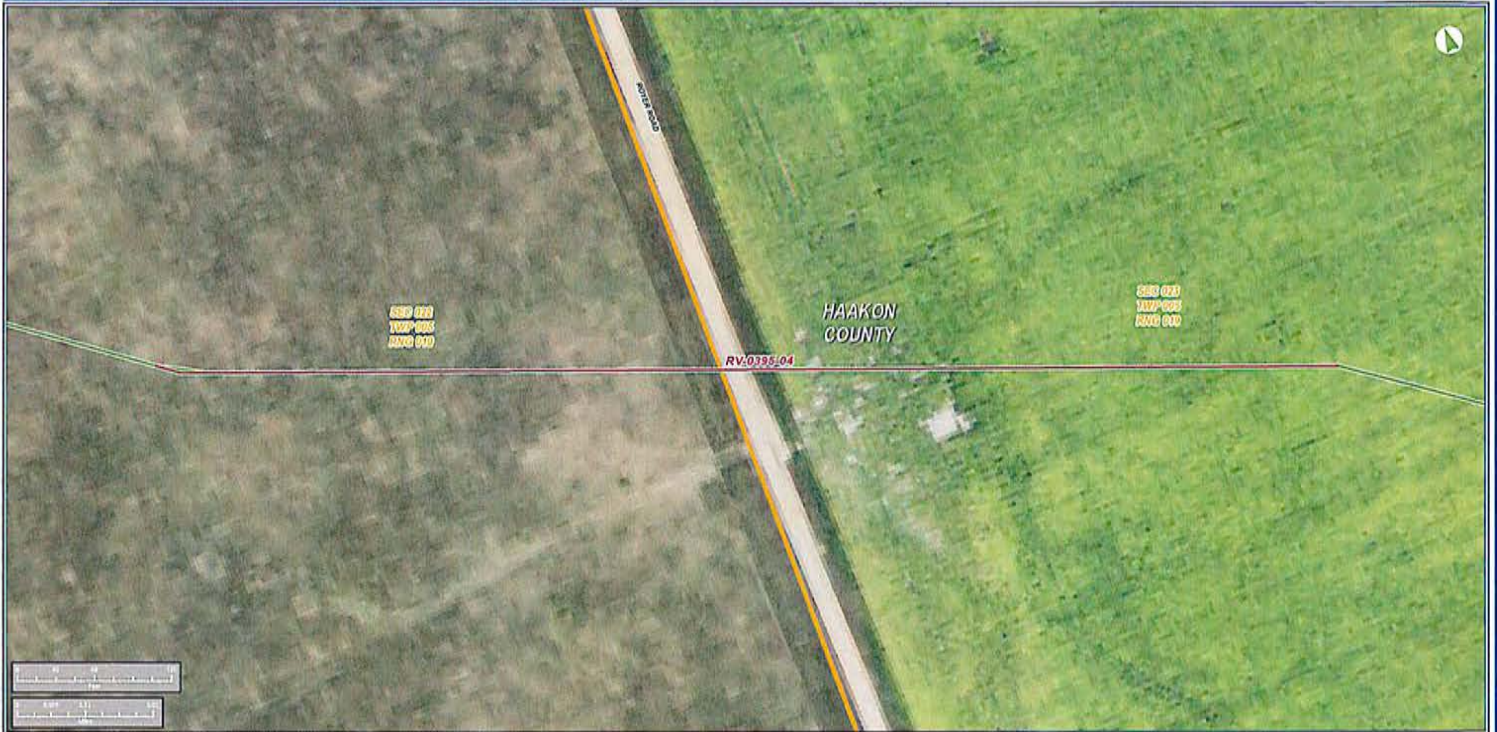
**KEYSTONE XL PROJECT
 ROUTE VARIATION 0385-01**

COUNTY:	HAAKON	DRAWN BY:	CS
STATE:	SOUTH DAKOTA	CHECKED BY:	PD
REV NO.:	REVISION	DATE	
A	ISSUED FOR REVIEW	2/14/12	
PRELIMINARY			
DATE:	2/14/12	PROJECT:	RY0385-01-01
APP:	2012-01-14	ENR:	2012-01-14

DESIGNED BY
exp Energy Services Inc.
 T: +1 800.345.5441
 F: +1 800.345.5523
 1300 METROPOLITAN BLVD.
 TALLAHASSEE, FL 32308 USA
 www.exp.com

exp.

- BUILDINGS • EARTH & ENVIRONMENT • ENERGY •
- INDUSTRIAL • INFRASTRUCTURE • SUSTAINABILITY •



LEGEND

- MILEPOST**
- ROUTE VARIATION (RV)
- ISSUED CENTERLINE AT TIME OF RV*
- WATERBODY
- COUNTY LINE
- SECTION LINE

*CL DATE AT THE TIME OF RV APPROVAL - 2012-04-15
 **MP OF THE ISSUED CL AT THE TIME OF RV APPROVAL

KEYSTONE XL PROJECT
ROUTE VARIATION 0395-04

COUNTY	HAakon	DRAWN BY	GL
STATE	SOUTH DAKOTA	CHECKED BY	PT
REV NO.	REVISION	DATE	
1	ISSUED FOR REVIEW	2012-02-21	
PRELIMINARY			
DATE	2012-01-11	PROJECT CODE	1420120111

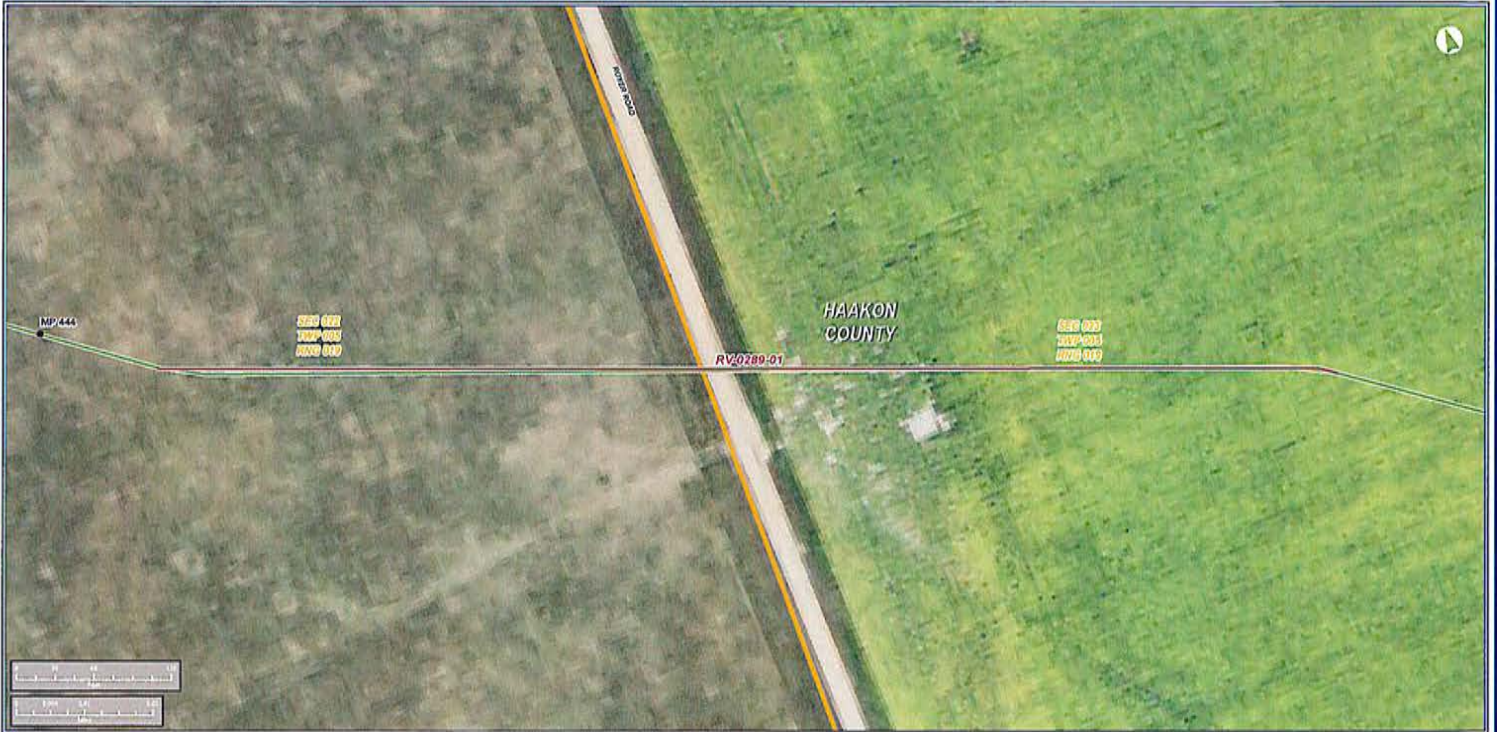
PREPARED BY
exp Energy Services Inc.
 T + 1.800.345.5441
 F + 1.800.345.5023
 130 METROPOLITAN BLVD.
 TALLAHASSEE, FL 32308 USA
www.exp.com

exp.

• BUILDINGS • EARTH & ENVIRONMENT • ENERGY •
 • INDUSTRIAL • INFRASTRUCTURE • SUSTAINABILITY •

DATE: 2012-01-11 PROJECT CODE: 1420120111 SHEET: 05/0524

SOUTH DAKOTA ROUTE VARIATION - 0289-01 (2014 NAIP IMAGERY)



LEGEND

- MILEPOST**
- ROUTE VARIATION (RV)
- ISSUED CENTERLINE AT TIME OF RV*
- ▭ WATERBODY
- ▭ COUNTY LINE
- ▭ SECTION LINE

*CL DATE AT THE TIME OF RV APPROVAL: 2012-01-14
 **MP OF THE ISSUED CL AT THE TIME OF RV APPROVAL

KEYSTONE XL PROJECT
ROUTE VARIATION 0289-01

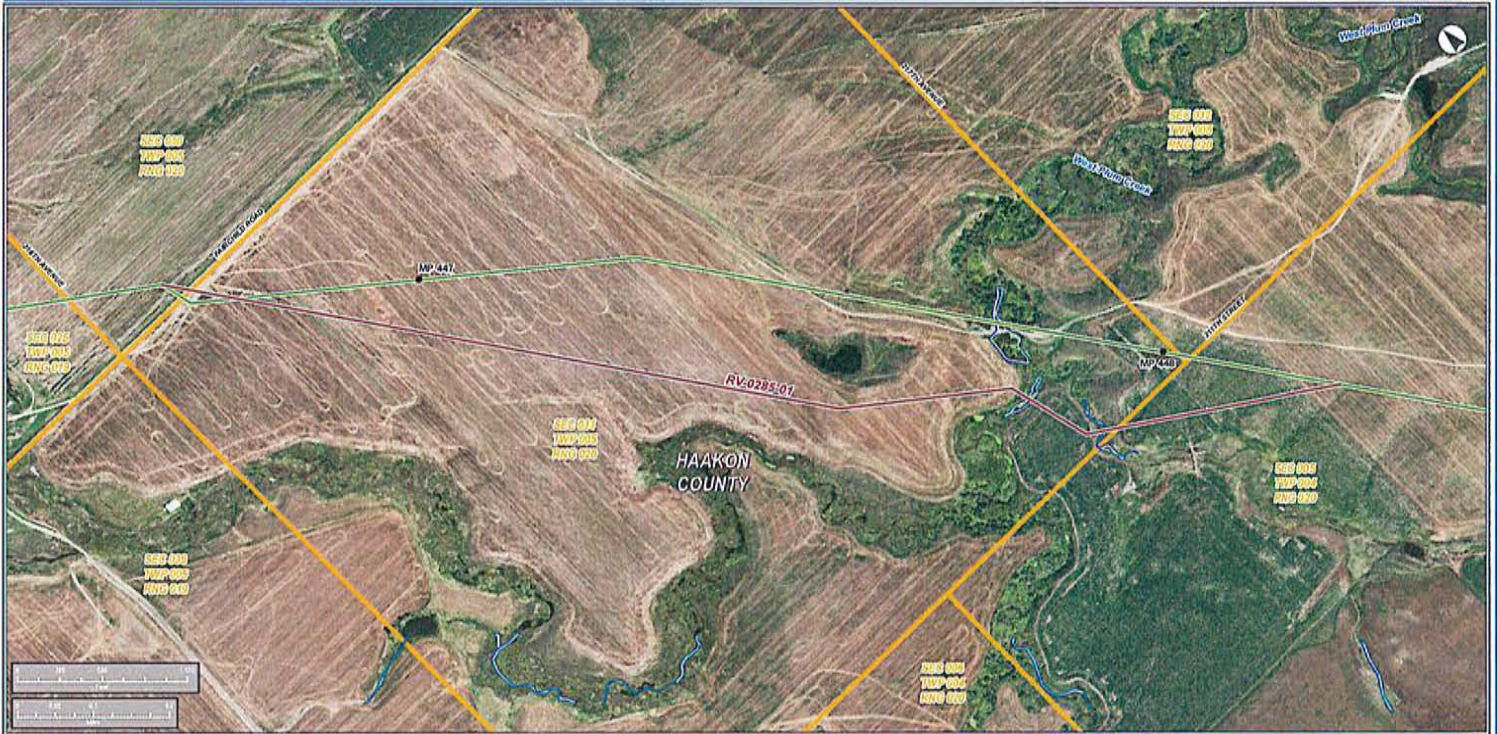
COUNTY:	HAakon	DRAWN BY:	CS
STATE:	SD	CHECKED BY:	FD
REV. NO.:	1	REVISION:	DATE:
A	EDITS FOR REVIEW		2012-01-14
PRELIMINARY			
DATE:	2012-01-14	PROJECT:	HAKE01/0114
DWG.:	CL-0289-01-01	SHEET:	01/0201

APPROVED BY
exp Energy Services Inc.
 T +1.800.385.5441
 F +1.800.385.5023
 1300 METROPOLITAN BLVD.
 TALLAHASSEE, FL 32308 USA
www.exp.com

• BUILDINGS • EARTH & ENVIRONMENT • ENERGY •
 • INDUSTRIAL • INFRASTRUCTURE • SUSTAINABILITY •

KEYSTONE XL PROJECT

SOUTH DAKOTA ROUTE VARIATION - 0285-01 (2014 NAIP IMAGERY)



LEGEND

- MILEPOST**
- ROUTE VARIATION (RV)
- ISSUED CENTERLINE AT TIME OF RV*
- ☒ WATERBODY
- ☒ COUNTY LINE
- ☒ SECTION LINE

*CL DATE AT THE TIME OF RV APPROVAL - 2012-03-14
 **MP OF THE ISSUED CL AT THE TIME OF RV APPROVAL

KEYSTONE XL PROJECT ROUTE VARIATION 0285-01			
COUNTY:	HAAKON	DRAWN BY:	SL
STATE:	SOUTH DAKOTA	ENGINEERED BY:	PT
REV. NO.:	REVISION	DATE	
1	ISSUED FOR PERMITS	2012/03/14	
PRELIMINARY			
DATE:	2/26/12	PROJECT:	HAKE028501
DWG. NO.:	028501-01	SHEET:	01/02

POWERED BY
exp Energy Services Inc.
 T +1-800-385-5441
 F +1-800-385-5523
 1300 METROPOLITAN BLVD.
 TALLAHASSEE, FL 32304, USA
 www.exp.com

exp.

- BUILDINGS • EARTH & ENVIRONMENT • ENERGY •
- INDUSTRIAL • INFRASTRUCTURE • SUSTAINABILITY •

KEYSTONE XL PROJECT



LEGEND

- MILEPOST**
- ROUTE VARIATION (RV)
- ISSUED CENTERLINE AT TIME OF RV*
- ☒ WATERBODY
- ☒ COUNTY LINE
- ☒ SECTION LINE

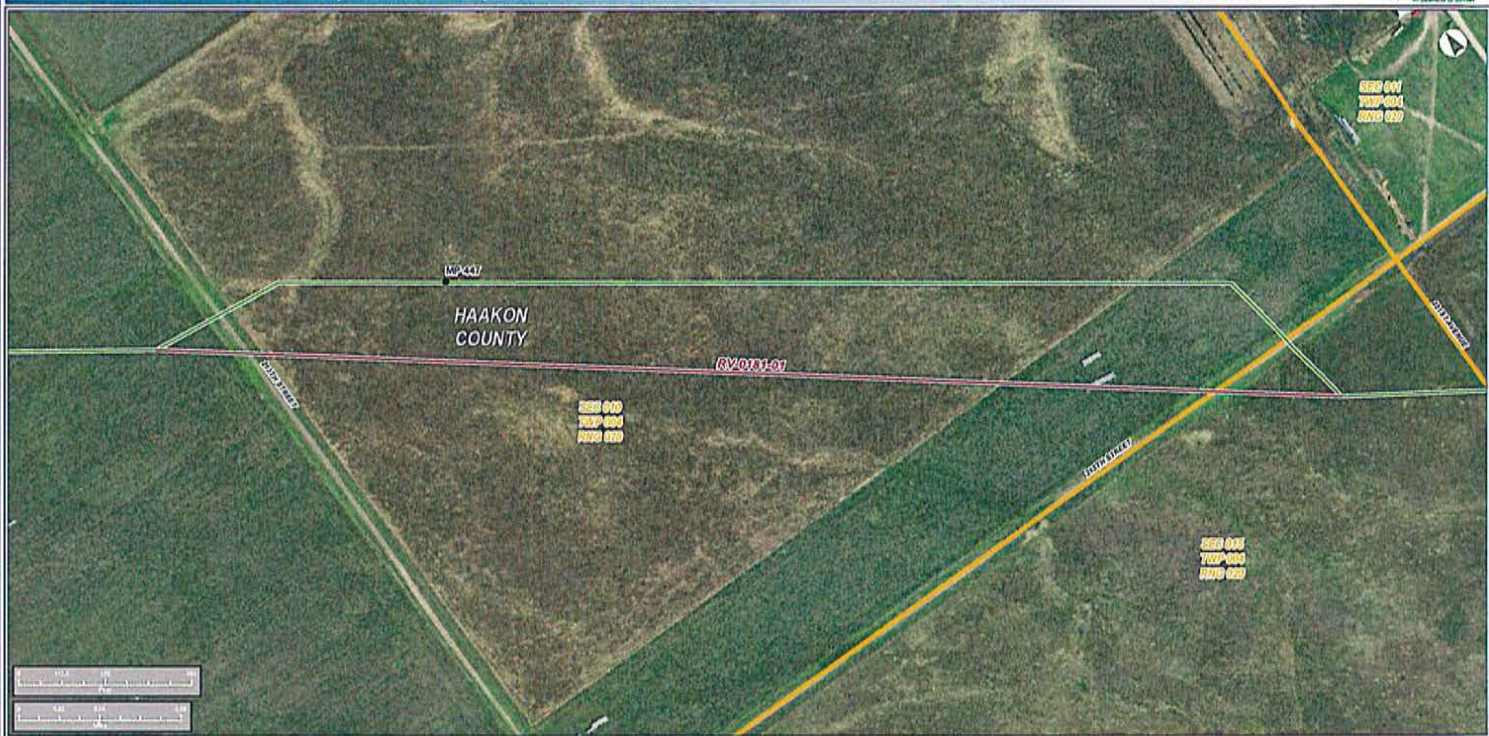
*CL DATE AT THE TIME OF RV APPROVAL - 2016-11-18
 **MP OF THE ISSUED CL AT THE TIME OF RV APPROVAL

**KEYSTONE XL PROJECT
 ROUTE VARIATION 0199-03**

COUNTY:	HAAKON	DRAWN BY:	SI
STATE:	SOUTH DAKOTA	CHECKED BY:	PS
REV NO.:	REVISION	DATE	
A	REVISION FOR REVIEW	2016-07-27	
PRELIMINARY			
DATE:	2016-07-27	PROJECT NO.:	0000120710
DWG. NO.:	01-000000000000	SHEET:	001/002

PREPARED BY
exp Energy Services Inc.
 T +1.800.385.5441
 F +1.800.385.5523
 130 METROPOLITAN BLVD.
 TALLAHASSEE, FL 32308, USA

• BUILDINGS • EARTH & ENVIRONMENT • ENERGY •
 • INDUSTRIAL • INFRASTRUCTURE • SUSTAINABILITY •



LEGEND

- MILEPOST**
- ROUTE VARIATION (RV)
- ISSUED CENTERLINE AT TIME OF RV*
- ☒ WATERBODY
- ☒ COUNTY LINE
- ☒ SECTION LINE

*CL DATE AT THE TIME OF RV APPROVAL - 2010-03-28
 **MP OF THE ISSUED CL AT THE TIME OF RV APPROVAL

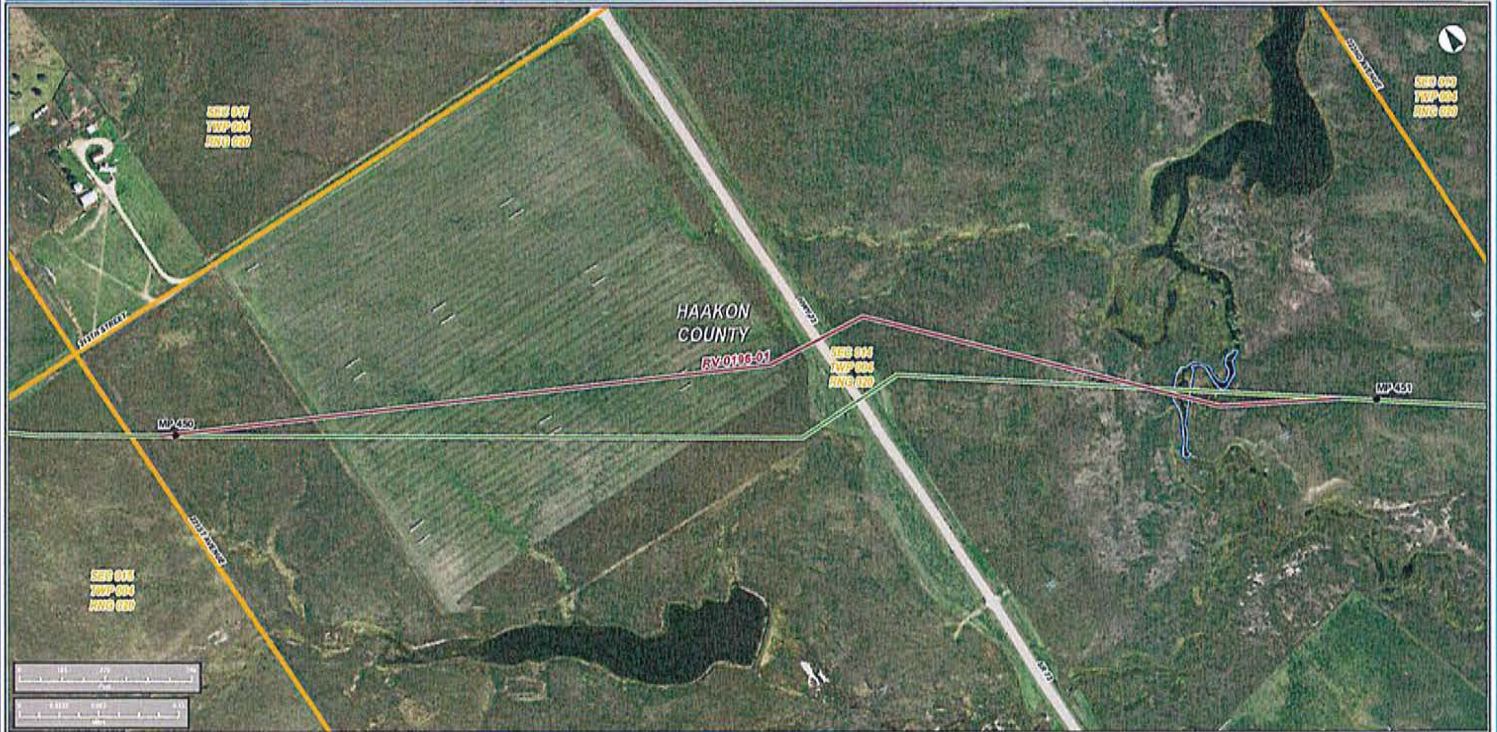
KEYSTONE XL PROJECT
ROUTE VARIATION 0181-01

COUNTY: HAakon	DRAWN BY: CJ
STATE: SOUTH DAKOTA	CHECKED BY: PJ
REV. NO.:	REVISION:
A	ISSUED FOR REVIEW: 2010-03-28
PRELIMINARY	
DATE: 2/15/12	PRODUCTION: 1/25/12/12/12
APP: K:\A\A\0527\0181	USER: [unreadable]

PREPARED BY
 exp Energy Services Inc.
 T: +1.800.365.5441
 F: +1.800.365.5023
 130 METROPOLITAN BLVD.
 TALLAHASSEE, FL 32308 USA

• BUILDINGS • EARTH & ENVIRONMENT • ENERGY •
 • INDUSTRIAL • INFRASTRUCTURE • SUSTAINABILITY •

SOUTH DAKOTA ROUTE VARIATION - 0198-01 (2014 NAIP IMAGERY)



LEGEND

- MILEPOST**
- ROUTE VARIATION (RV)
- ISSUED CENTERLINE AT TIME OF RV*
- ▭ WATERBODY
- ▭ COUNTY LINE
- ▭ SECTION LINE

*CL DATE AT THE TIME OF RV APPROVAL - 2010-11-18
 **MP OF THE ISSUED CL AT THE TIME OF RV APPROVAL

KEYSTONE XL PROJECT
ROUTE VARIATION 0198-01

COUNTY: Haakon	DRAWN BY: GJ	
STATE: SD/450-451	CHECKED BY: FS	
REV NO:	REVISION	DATE
1	FIELD FOR REVIEW	2014-01-21
PRELIMINARY		
DATE:	2/16/21	PROJECT:

FINANCED BY
exp Energy Services Inc.
 T - 1.800.365.5441
 F - 1.800.365.5523
 1300 METROPOLITAN BLVD.
 TALLAHASSEE, FL 32308, USA

• BUILDINGS • EARTH & ENVIRONMENT • ENERGY •
 • INDUSTRIAL • INFRASTRUCTURE • SUSTAINABILITY •

KEYSTONE XL PROJECT

SOUTH DAKOTA ROUTE VARIATION - 0256-01 (2014 NAIP IMAGERY)



LEGEND

- MILEPOST**
- ROUTE VARIATION (RV)
- ISSUED CENTERLINE AT TIME OF RV*
- ☒ WATERBODY
- ☒ COUNTY LINE
- ☒ SECTION LINE

*CL DATE AT THE TIME OF RV APPROVAL - 2012-09-14
 **MP OF THE ISSUED CL AT THE TIME OF RV APPROVAL

KEYSTONE XL PROJECT
ROUTE VARIATION 0256-01

COUNTY:	HAakon	DRAWN BY:	SL
STATE:	SD	CHECKED BY:	FD
REV NO:	1	REVISION	DATE
1	ISSUED FOR REVIEW		07/16/12
PRELIMINARY			
DATE:	07/16/12	PROJECT:	14002/00100
DRW:	SL	CHECKED:	FD

POWERED BY
exp Energy Services Inc.
 T - 1.800.345.5441
 F - 1.800.345.5523
 1300 METROPOLITAN BLVD.
 TALLAHASSEE, FL 32304, USA
 www.exp.com

• BUILDINGS • EARTH & ENVIRONMENT • ENERGY •
 • INDUSTRIAL • INFRASTRUCTURE • SUSTAINABILITY •

KEYSTONE XL PROJECT

SOUTH DAKOTA ROUTE VARIATION - 0286-01 (2014 NAIP IMAGERY)



LEGEND

- MILEPOST**
- ROUTE VARIATION (RV)
- ISSUED CENTERLINE AT TIME OF RV*
- WATERBODY
- COUNTY LINE
- SECTION LINE

*CL DATE AT THE TIME OF RV APPROVAL - 2012-03-14
 **MP OF THE ISSUED CL AT THE TIME OF RV APPROVAL

KEYSTONE XL PROJECT			
ROUTE VARIATION 0286-01			
COUNTY	HAAKON	DRAWN BY	CS
STATE	SOUTH DAKOTA	CHECKED BY	JTY
REV NO.	REVISION	DATE	
1	ISSUED FOR APPROVAL	2012/03/14	
PRELIMINARY			
DATE	2/15/2012	PROJECT	1408120101
APP.	CS	CHKD.	JTY

exp Energy Services Inc.
 T. +1 800 345 5441
 F. +1 800 345 5023
 1300 METROPOLITAN BLVD.
 TALLAHASSEE, FL 32308, USA
www.exp.com

• BUILDINGS • EARTH & ENVIRONMENT • ENERGY •
 • INDUSTRIAL • INFRASTRUCTURE • SUSTAINABILITY •

KEYSTONE XL PROJECT



LEGEND

- MILEPOST**
- ROUTE VARIATION (RV)
- ISSUED CENTERLINE AT TIME OF RV**
- ☒ WATERBODY
- ☒ COUNTY LINE
- ☒ SECTION LINE

**CL DATE AT THE TIME OF RV APPROVAL - 2012-06-11
 ***MP OF THE ISSUED CL AT THE TIME OF RV APPROVAL

**KEYSTONE XL PROJECT
 ROUTE VARIATION 0497-01**

COUNTY: SIOUX	DRAWN BY: GJ	
STATE: SOUTH DAKOTA	CHECKED BY: FP	
REV NO:	REVISION	DATE
1	ROUTE VARIATION	2012-01-21
PRELIMINARY		
DATE:	PROJECT NO:	SHEET NO:
2012-01-21	44802/0497-01	001

DESIGNED BY
exp Energy Services Inc.
 T +1-800-385-5441
 F +1-800-385-5523
 130 METROPOLITAN BLVD.
 TALLAHASSEE, FL 32304 USA

exp.

• BUILDINGS • EARTH & ENVIRONMENT • ENERGY •
 • INDUSTRIAL • INFRASTRUCTURE • SUSTAINABILITY •

SOUTH DAKOTA ROUTE VARIATION - 0443-04 (2014 NAIP IMAGERY)



LEGEND

- MILEPOST**
- ROUTE VARIATION (RV)
- ISSUED CENTERLINE AT TIME OF RV*
- ▭ WATERBODY
- ▭ COUNTY LINE
- ▭ SECTION LINE

*CL DATE AT THE TIME OF RV APPROVAL - 2013-06-11
 **MP OF THE ISSUED CL AT THE TIME OF RV APPROVAL

KEYSTONE XL PROJECT
ROUTE VARIATION 0443-04

COUNTY:	HAakon	DRAWN BY:	GL
STATE:	SOUTH DAKOTA	CHECKED BY:	PD
REV. NO.:	REVISION	DATE	
A	EDS FOR REVIEW	2014-01-15	
PRELIMINARY			
DATE:	2014-01-15	PROJECT:	140610014-0
DWG:	0443-04-04-04	SHEET:	0443-04

PROVIDED BY
exo Energy Services Inc.
 T: +1 850 365 5441
 F: +1 850 365 5523
 150 METROPOLITAN BLVD.
 TALLAHASSEE, FL 32308 USA

• BUILDINGS • EARTH & ENVIRONMENT • ENERGY •
 • INDUSTRIAL • INFRASTRUCTURE • SUSTAINABILITY •

KEYSTONE XL PROJECT

SOUTH DAKOTA ROUTE VARIATION - 0187-01 (2014 NAIP IMAGERY)



LEGEND

- MILEPOST**
- ROUTE VARIATION (RV)
- ISSUED CENTERLINE AT TIME OF RV*
- ☒ WATERBODY
- ☒ COUNTY LINE
- ☒ SECTION LINE

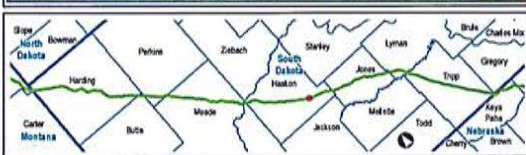
*CL DATE AT THE TIME OF RV APPROVAL - 2010-05-28
 **MP OF THE ISSUED CL AT THE TIME OF RV APPROVAL

KEYSTONE XL PROJECT ROUTE VARIATION 0187-01			
COUNTY: HANCOCK	DRAWN BY: CL	DATE: 2/15/12	SCALE: 1"=1/4" AS SHOWN
STATE: SOUTH DAKOTA	DATE: 2/15/12	DATE: 2/15/12	DATE: 2/15/12
REV. NO.: A	REVISION: E2 - R2 FOR REVISION	DATE: 2/15/12	DATE: 2/15/12
PRELIMINARY			
DATE: 2/15/12	PROJECT: KEYSX01/0187	DWG: P-05A-0304/0187-01	SCALE: 1"=1/4" AS SHOWN

PROPOSED BY:
exp Energy Services Inc.
 T: +1 800 365 5441
 F: +1 800 365 5523
 1300 METROPOLITAN BLVD.
 TALLAHASSEE, FL 32304, USA

• BUILDINGS • EARTH & ENVIRONMENT • ENERGY •
 • INDUSTRIAL • INFRASTRUCTURE • SUSTAINABILITY •

KEYSTONE XL PROJECT



LEGEND

- MILEPOST**
- ROUTE VARIATION (RV)
- ISSUED CENTERLINE AT TIME OF RV*
- WATERBODY
- COUNTY LINE
- SECTION LINE

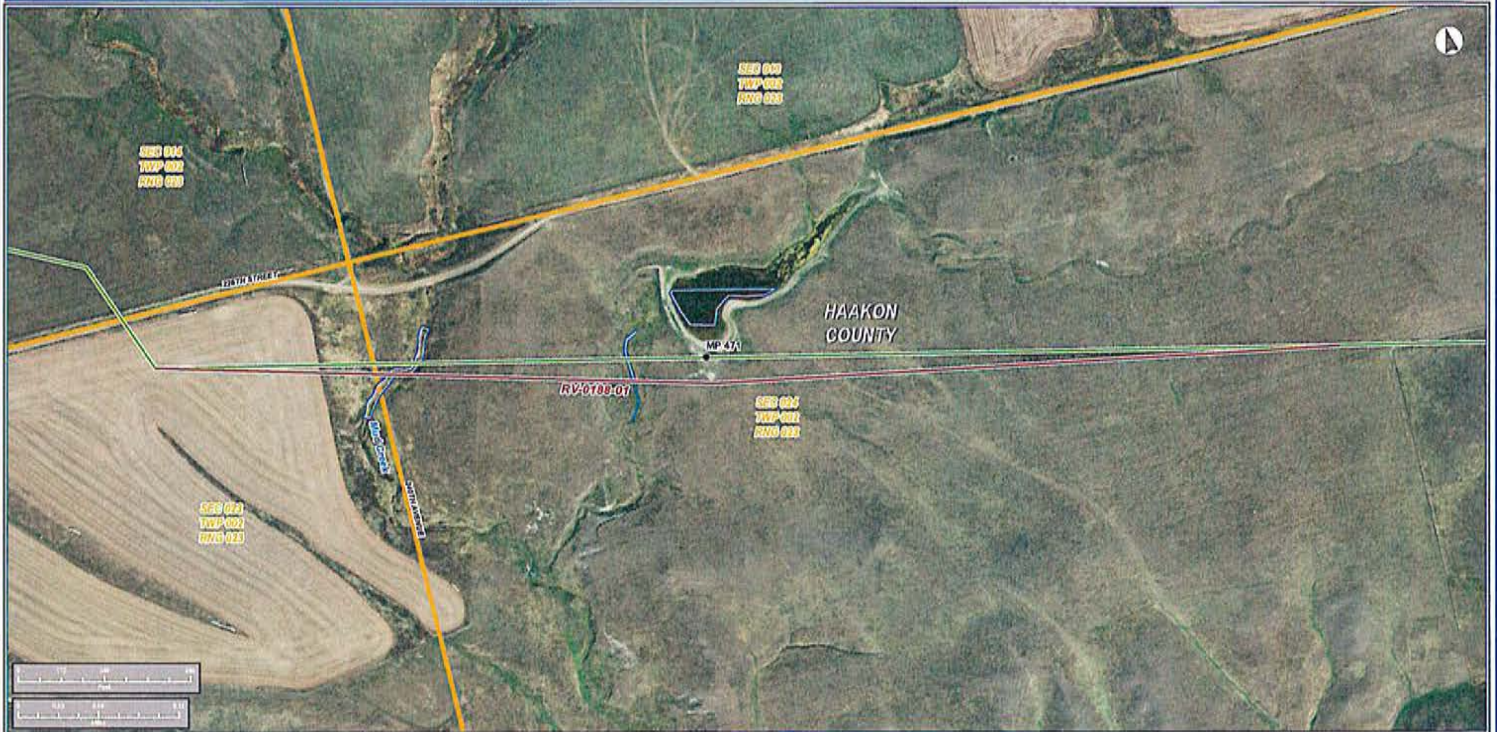
*CL DATE AT THE TIME OF RV APPROVAL - 2010-11-18
 **MP OF THE ISSUED CL AT THE TIME OF RV APPROVAL

**KEYSTONE XL PROJECT
ROUTE VARIATION 0199-05**

COUNTY	HAAKON	DRAWN BY	GS
STATE	SOUTH DAKOTA	CHECKED BY	PD
REV NO.	REVISION	DATE	
A	ISSUED FOR PERMITS	2010-11-18	
PRELIMINARY			
DATE	2/15/12	PROJECTION	NAD83 UTM 14N

DESIGNED BY
exp Energy Services Inc.
 T +1 800.345.5441
 F +1 800.345.5523
 1500 METROPOLITAN BLVD.
 TALLAHASSEE, FL 32304 USA

• BUILDINGS • EARTH & ENVIRONMENT • ENERGY •
 • INDUSTRIAL • INFRASTRUCTURE • SUSTAINABILITY •



LEGEND

- MILEPOST**
- ROUTE VARIATION (RV)
- ISSUED CENTERLINE AT TIME OF RV*
- WATERBODY
- COUNTY LINE
- SECTION LINE

*CL DATE AT THE TIME OF RV APPROVAL - 2010-09-24
 **MP OF THE ISSUED CL AT THE TIME OF RV APPROVAL

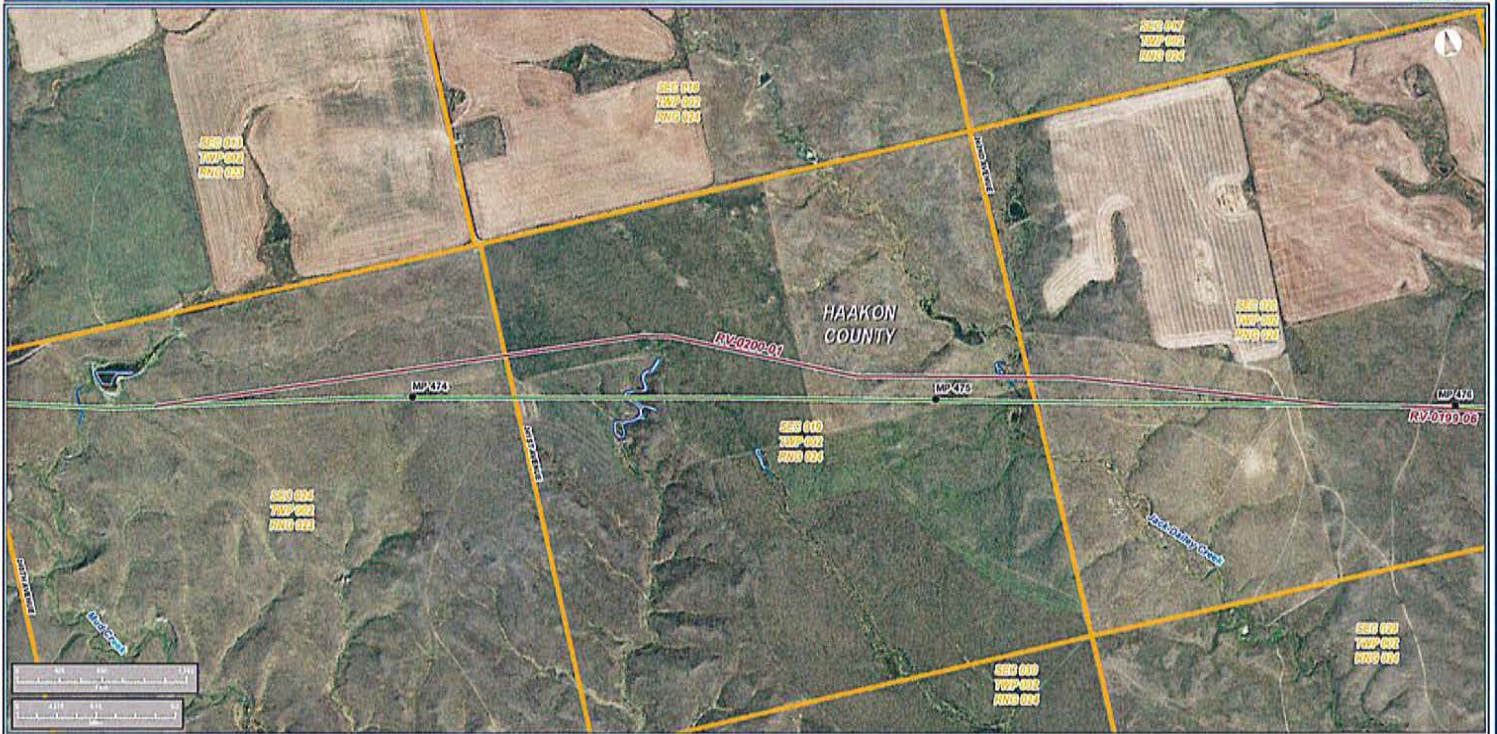
**KEYSTONE XL PROJECT
 ROUTE VARIATION 0188-01**

COUNTY:	HAAKON	DRAWN BY:	CS
STATE:	SOUTH DAKOTA	CHECKED BY:	FD
REV. NO.:	REASON	DATE	
1	ISSUED FOR PERMIT	2014-01-21	
PRELIMINARY			
DATE:	2/15/14	PROJECT:	HAKEON COUNTY
DWG.:	Keystone0188-01	SHEET:	04 of 04

DESIGNED BY
exp Energy Services Inc.
 T - 1-800-365-5441
 F - 1-800-365-5023
 1300 METROPOLITAN BLVD.
 TALLAHASSEE, FL 32304, USA
 www.exp.com

exp.

• BUILDINGS • EARTH & ENVIRONMENT • ENERGY •
 • INDUSTRIAL • INFRASTRUCTURE • SUSTAINABILITY •



LEGEND

- MILEPOST**
- ROUTE VARIATION (RV)
- ISSUED CENTERLINE AT TIME OF RV**
- ▭ WATERBODY
- ▭ COUNTY LINE
- ▭ SECTION LINE

**CL DATE AT THE TIME OF RV APPROVAL - 2010-11-18
 **MP OF THE ISSUED CL AT THE TIME OF RV APPROVAL

KEYSTONE XL PROJECT
ROUTE VARIATION 0200-01

COUNTY	HAAGON	DRAWN BY	SS
STATE	SD/74 200-01	CHECKED BY	PT
REV NO.	REVISION	DATE	
1	ISSUED FOR PERMITS	2010-11-18	
PRELIMINARY			
DATE	2/15/12	PROJECTION	NAD83 UTM 18

PREPARED BY
exp Energy Services Inc.
 T +1 850 345 5441
 F +1 850 345 5523
 1350 METROPOLITAN BLVD.
 TALLAHASSEE, FL 32308 USA

exp.

• BUILDINGS • EARTH & ENVIRONMENT • ENERGY •
 • INDUSTRIAL • INFRASTRUCTURE • SUSTAINABILITY •

DATE: 2/15/12 PROJECT: KEYSTONE XL SHEET: 0536



LEGEND

- MILEPOST**
- ROUTE VARIATION (RV)
- ISSUED CENTERLINE AT TIME OF RV*
- ☒ WATERBODY
- ☒ COUNTY LINE
- ☒ SECTION LINE

*CL DATE AT THE TIME OF RV APPROVAL - 2010-11-18
 **MAP OF THE ISSUED CL AT THE TIME OF RV APPROVAL

KEYSTONE XL PROJECT
ROUTE VARIATION 0199-06

COUNTY	HAAKON	DRAWN BY	SL
STATE	SOUTH DAKOTA	CHECKED BY	FD
REV NO.	REVISION	DATE	
A	ISSUED FOR REVIEW	2010-11-18	
PRELIMINARY			
DATE	2010-11-18	PROJECT	HAKE XL 0537

PREPARED BY
exp Energy Services Inc.
 T: +1 800 345 5441
 F: +1 800 345 5023
 1300 METROPOLITAN BLVD.
 TALLAHASSEE, FL 32308 USA

exp.

• BUILDINGS • EARTH & ENVIRONMENT • ENERGY •
 • INDUSTRIAL • INFRASTRUCTURE • SUSTAINABILITY •

DATE: 2010-11-18 PROJECT: HAKE XL 0537 SHEET: 0537-001 OF 002



LEGEND

- MILEPOST**
- ROUTE VARIATION (RV)
- ISSUED CENTERLINE AT TIME OF RV*
- ☒ WATERBODY
- ☒ COUNTY LINE
- ☒ SECTION LINE

*CL DATE AT THE TIME OF RV APPROVAL - 2012-05-14
 **MP OF THE ISSUED CL AT THE TIME OF RV APPROVAL

KEYSTONE XL PROJECT	
ROUTE VARIATION 0262-01	
COUNTY: HAakon	DISTRICT: 01
STATE: SOUTH DAKOTA	DATE: PD
REV. NO.: 0	DATE: 2012-05-14
PRELIMINARY	
DATE: 2012-05-14	PROJECT: KEYSSTONE XL
DWG: 0262-001-01	SHEET: 0262-01

PREPARED BY
 exp Energy Services Inc.
 T: +1 800 385 5441
 F: +1 800 385 5023
 1302 METROPOLITAN BLVD.
 TALLAHASSEE, FL 32304 USA

• BUILDINGS • EARTH & ENVIRONMENT • ENERGY •
 • INDUSTRIAL • INFRASTRUCTURE • SUSTAINABILITY •



HAAKON
COUNTY

RV 0260-01
RV 0260-01
RV 0260-01

RV 0260-01



LEGEND

- MILEPOST**
- ROUTE VARIATION (RV)
- ISSUED CENTERLINE AT TIME OF RV*
- ☒ WATERBODY
- ☒ COUNTY LINE
- ☒ SECTION LINE

*CL DATE AT THE TIME OF RV APPROVAL - 2012-03-14
 **MP OF THE ISSUED CL AT THE TIME OF RV APPROVAL

KEYSTONE XL PROJECT
ROUTE VARIATION 0260-01

COUNTY	HAAKON	DRAWN BY	CS
STATE	SOUTH DAKOTA	CHECKED BY	FD
REV NO:	REVISION	DATE	
A	REVISED FOR REVIEW	2014-01	
PRELIMINARY			
DATE	2/15/2014	PROJECT CODE	14000120103
DWG.	140000000000000	SHEET	002/003

PROPOSED BY
exp Energy Services Inc.
 T +1 352 385 5441
 F +1 850 385 5523
 1300 METROPOLITAN BLVD.
 TALLAHASSEE, FL 32308, USA
 www.exp.com

• BUILDINGS • EARTH & ENVIRONMENT • ENERGY •
 • INDUSTRIAL • INFRASTRUCTURE • SUSTAINABILITY •



LEGEND

- MILEPOST**
- ROUTE VARIATION (RV)
- ISSUED CENTERLINE AT TIME OF RV*
- ☒ WATERBODY
- ☒ COUNTY LINE
- ☒ SECTION LINE

*CL DATE AT THE TIME OF RV APPROVAL - 2012-05-14
 **MP OF THE ISSUED CL AT THE TIME OF RV APPROVAL

KEYSTONE XL PROJECT ROUTE VARIATION 0260-02			
COUNTY:	HAAKON	DRAWN BY:	SI
STATE:	SOUTH DAKOTA	CHECKED BY:	FD
REV. NO.:	REVISION	DATE	
A	EDITED FOR FINAL	2014-01-17	
PRELIMINARY			
DATE:	2/10/14	PROJECT:	HA-K05010
DWG. NO.:	0540-00000002	REV.:	000000

PROPOSED BY
exp Energy Services Inc.
 T: +1.850.385.5441
 F: +1.850.385.5523
 1300 METROPOLITAN BLVD.
 TALLAHASSEE, FL 32308 USA
 www.exp.com

• BUILDINGS • EARTH & ENVIRONMENT • ENERGY •
 • INDUSTRIAL • INFRASTRUCTURE • SUSTAINABILITY •



LEGEND

- MILEPOST**
- ROUTE VARIATION (RV)
- ISSUED CENTERLINE AT TIME OF RV*
- WATERBODY
- COUNTY LINE
- SECTION LINE

*CL DATE AT THE TIME OF RV APPROVAL - 2013-06-11
 **MP OF THE ISSUED CL AT THE TIME OF RV APPROVAL

KEYSTONE XL PROJECT
ROUTE VARIATION 0455-02

COUNTY: HA-20	DRAWN BY: US
STATE: SOUTH DAKOTA	CHECKED BY: FP
REV. NO.: 1	REVISION: DATE
A	ISSUED FOR PERMIT: 2014121
PRELIMINARY	
DATE: 2/15/14	PROJECT: W&E/0455-02
APP: R/HA/0455-02	HEET: 0455-02

exp Energy Services Inc.
 T: +1 800 345 5441
 F: +1 800 345 5023
 1300 METROPOLITAN BLVD.
 TALLAHASSEE, FL 32308 USA
 www.exp.com

exp.

• BUILDINGS • EARTH & ENVIRONMENT • ENERGY •
 • INDUSTRIAL • INFRASTRUCTURE • SUSTAINABILITY •

SOUTH DAKOTA ROUTE VARIATION - 0260-04 (2014 NAIP IMAGERY)



LEGEND

- MILEPOST**
- ROUTE VARIATION (RV)
- ISSUED CENTERLINE AT TIME OF RV*
- ☒ WATERBODY
- ☒ COUNTY LINE
- ☒ SECTION LINE

*CL DATE AT THE TIME OF RV APPROVAL - 2013-03-14
 **MP OF THE ISSUED CL AT THE TIME OF RV APPROVAL

KEYSTONE XL PROJECT
ROUTE VARIATION 0260-04

COUNTY	South Dakota	DRAWN BY	SL
STATE	South Dakota	CHECKED BY	JD
REV NO.	A	REVISION	DATE
		ISSUED FOR REVIEW	2014-04-14
PRELIMINARY			
DATE	2014-04-14	PREPARED BY	SL

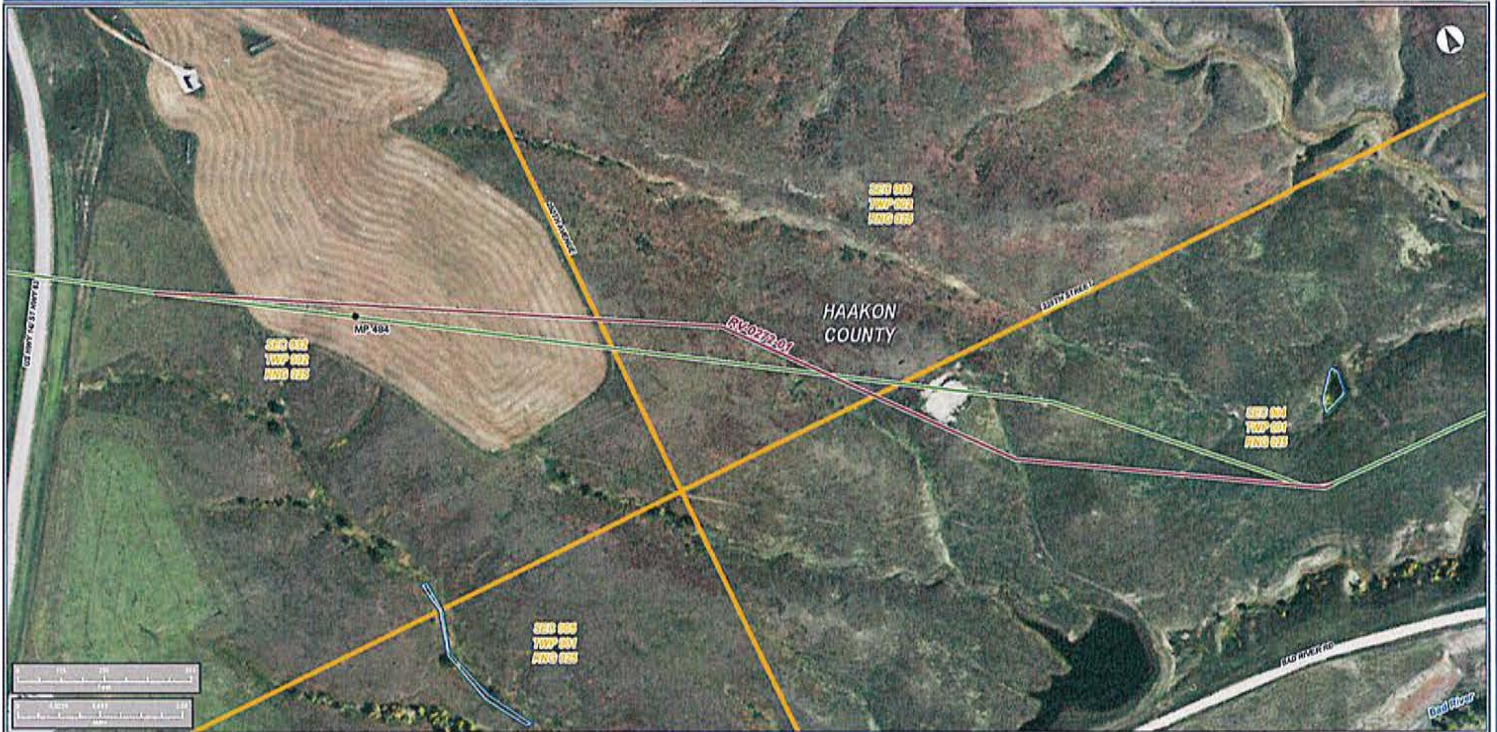
PREPARED BY
exp Energy Services Inc.
 T: +1 850 365 5441
 F: +1 850 365 5023
 1300 METROPOLITAN BLVD.
 TALLAHASSEE, FL 32308, USA
www.exp.com

exp.

• BUILDINGS • EARTH & ENVIRONMENT • ENERGY •
 • INDUSTRIAL • INFRASTRUCTURE • SUSTAINABILITY •

DATE: 2014-04-14 PREPARED BY: SL

KEYSTONE XL PROJECT



LEGEND

- MILEPOST**
- ROUTE VARIATION (RV)
- ISSUED CENTERLINE AT TIME OF RV*
- ☒ WATERBODY
- ▭ COUNTY LINE
- ▭ SECTION LINE

*CL DATE AT THE TIME OF RV APPROVAL - 2012-03-14
 **MP OF THE ISSUED CL AT THE TIME OF RV APPROVAL

**KEYSTONE XL PROJECT
ROUTE VARIATION 0272-01**

COUNTY:	HAakon	DRAWN BY:	SL
STATE:	SOUTH DAKOTA	CHECKED BY:	PS
REV NO:	1	REVISION:	DATE
A	ISSUED FOR PERMIT		2012-03-14
PRELIMINARY			
DATE:	2/15/12	PROJECT:	HAKEON 0272-01
APP:	PLANNING/DESIGN	ENR:	ENR/2012

DESIGNED BY
exp Energy Services Inc.
 T: +1.800.345.5441
 F: +1.800.345.5023
 1300 METROPOLITAN BLVD.
 TALLAHASSEE, FL 32308 USA
 www.exp.com

exp.

• BUILDINGS • EARTH & ENVIRONMENT • ENERGY •
 • INDUSTRIAL • INFRASTRUCTURE • SUSTAINABILITY •

SOUTH DAKOTA ROUTE VARIATION - 0215-03 (2014 NAIP IMAGERY)



LEGEND

- MILEPOST**
- ROUTE VARIATION (RV)
- ISSUED CENTERLINE AT TIME OF RV*
- WATERBODY
- COUNTY LINE
- SECTION LINE

*CL DATE AT THE TIME OF RV APPROVAL - 2016-11-18
 **MP OF THE ISSUED CL AT THE TIME OF RV APPROVAL

KEYSTONE XL PROJECT
ROUTE VARIATION 0215-03

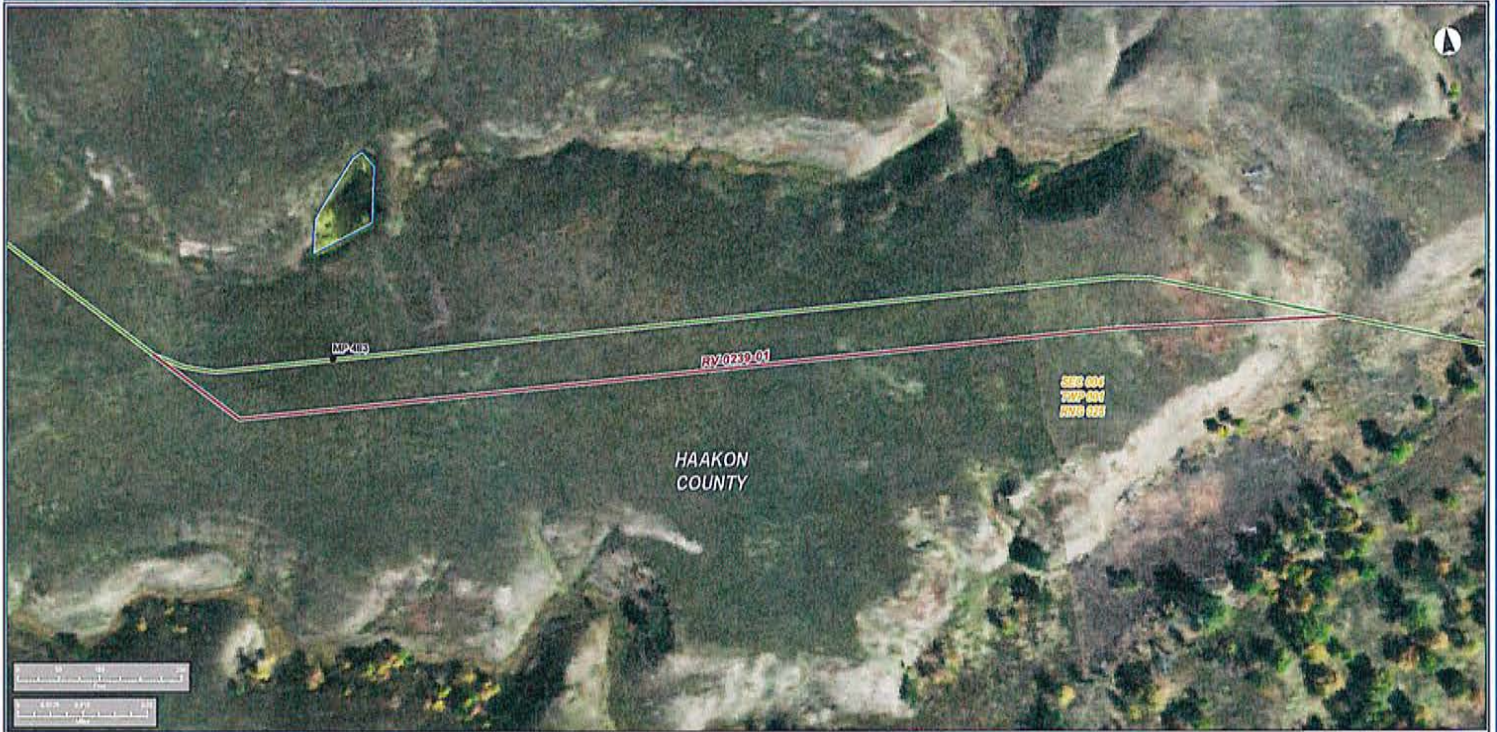
COUNTY:	HAakon	DRAWN BY:	CL
STATE:	SOUTH DAKOTA	CHECKED BY:	PT
REV. NO.:	REVISION	DATE:	
A	EDITED FOR REVIEW	2016-11-18	
PRELIMINARY			
DATE:	2016-11-18	PRODUCTION:	HA0011/0011

DESIGNED BY
exp Energy Services Inc.
 T +1.800.385.5441
 F +1.800.385.5523
 180 METROPOLITAN BLVD.
 TALLAHASSEE, FL 32308, USA

• BUILDINGS • EARTH & ENVIRONMENT • ENERGY •
 • INDUSTRIAL • INFRASTRUCTURE • SUSTAINABILITY •

DATE: 2016-11-18 PRODUCTION: HA0011/0011 SHEET: 05/05

KEYSTONE XL PROJECT



LEGEND

- MILEPOST**
- ROUTE VARIATION (RV)
- ISSUED CENTERLINE AT TIME OF RV*
- WATERBODY
- COUNTY LINE
- SECTION LINE

*CL DATE AT THE TIME OF RV APPROVAL - 2011-04-14
 **MP OF THE ISSUED CL AT THE TIME OF RV APPROVAL

KEYSTONE XL PROJECT
ROUTE VARIATION 0239-01

COUNTY:	HAUKON	DRAWN BY:	SL
STATE:	SOUTH DAKOTA	CHECKED BY:	FD
REV. NO.:	REVISION	DATE	
A	FOR REVIEW	2014/02/11	
PRELIMINARY			
DATE:	2014-02-11	PROJECT NO.:	14093/0239-01
DWG. NO.:	0239-01-001	SHEET:	01/02

PROPOSED BY
exp Energy Services Inc.
 T +1.850.385.5411
 F +1.850.385.5523
 1500 METROPOLITAN BLVD.
 TALLAHASSEE, FL 32308, USA
 WWW.EXP.COM

• BUILDINGS • EARTH & ENVIRONMENT • ENERGY •
 • INDUSTRIAL • INFRASTRUCTURE • SUSTAINABILITY •



LEGEND

- MILEPOST**
- ROUTE VARIATION (RV)
- ISSUED CENTERLINE AT TIME OF RV*
- ▭ WATERBODY
- ▭ COUNTY LINE
- ▭ SECTION LINE

*CL DATE AT THE TIME OF RV APPROVAL - 2010-11-18
 **MP OF THE ISSUED CL AT THE TIME OF RV APPROVAL

KEYSTONE XL PROJECT
ROUTE VARIATION 0220-01

COUNTY:	HAAKON	DRAWN BY:	GI
STATE:	SOUTH DAKOTA	CHECKED BY:	FD
REV NO.:	REVISION	DATE:	
A	EDITORIAL REVIEW	2/24/12	
PRELIMINARY			
DATE:	2/24/12	PROJECT NO.:	045011/01/12
APP.:	CL/EA/REVIEW/0220-01	SCALE:	1"=1/2"=1/4"

APPROVED BY:

exp Energy Services Inc.
 T. +1.800.365.5441
 F. +1.800.365.5023
 130 METROPOLITAN BLVD.
 TALLAHASSEE, FL 32308, USA

• BUILDINGS • EARTH & ENVIRONMENT • ENERGY •
 • INDUSTRIAL • INFRASTRUCTURE • SUSTAINABILITY •



LEGEND

- MILEPOST**
- ROUTE VARIATION (RV)
- ISSUED CENTERLINE AT TIME OF RV*
- ☒ WATERBODY
- ☒ COUNTY LINE
- ☒ SECTION LINE

*CL DATE AT THE TIME OF RV APPROVAL - 2013-04-11
 **MP OF THE ISSUED CL AT THE TIME OF RV APPROVAL

KEYSTONE XL PROJECT
ROUTE VARIATION 0470-02

COUNTY	HAakon	DRAWN BY	GI
STATE	SOUTH DAKOTA	CHECKED BY	FD
REV NO.	REVISION	DATE	
1	ISSUED FOR REVIEW	2014-01-15	
PRELIMINARY			
DATE	2014-01-15	PROJECT	1408210000

DESIGNED BY
exp Energy Services Inc.
 T: +1.800.345.5441
 F: +1.800.345.6623
 1300 WESTROPOLETAU BLVD.
 TALLAHASSEE, FL 32308, USA
www.exp.com

exp.

• BUILDINGS • EARTH & ENVIRONMENT • ENERGY •
 • INDUSTRIAL • INFRASTRUCTURE • SUSTAINABILITY •

DATE: 2014-01-15 PROJECT: 1408210000 SHEET: 0470-02-02-02 Rev: 02

SOUTH DAKOTA ROUTE VARIATION - 0260-03 (2014 NAIP IMAGERY)



LEGEND

- MILEPOST**
- ROUTE VARIATION (RV)
- ISSUED CENTERLINE AT TIME OF RV*
- ☒ WATERBODY
- ☒ COUNTY LINE
- ☒ SECTION LINE

*CL DATE AT THE TIME OF RV APPROVAL - 2010-03-14
 **MP OF THE ISSUED CL AT THE TIME OF RV APPROVAL

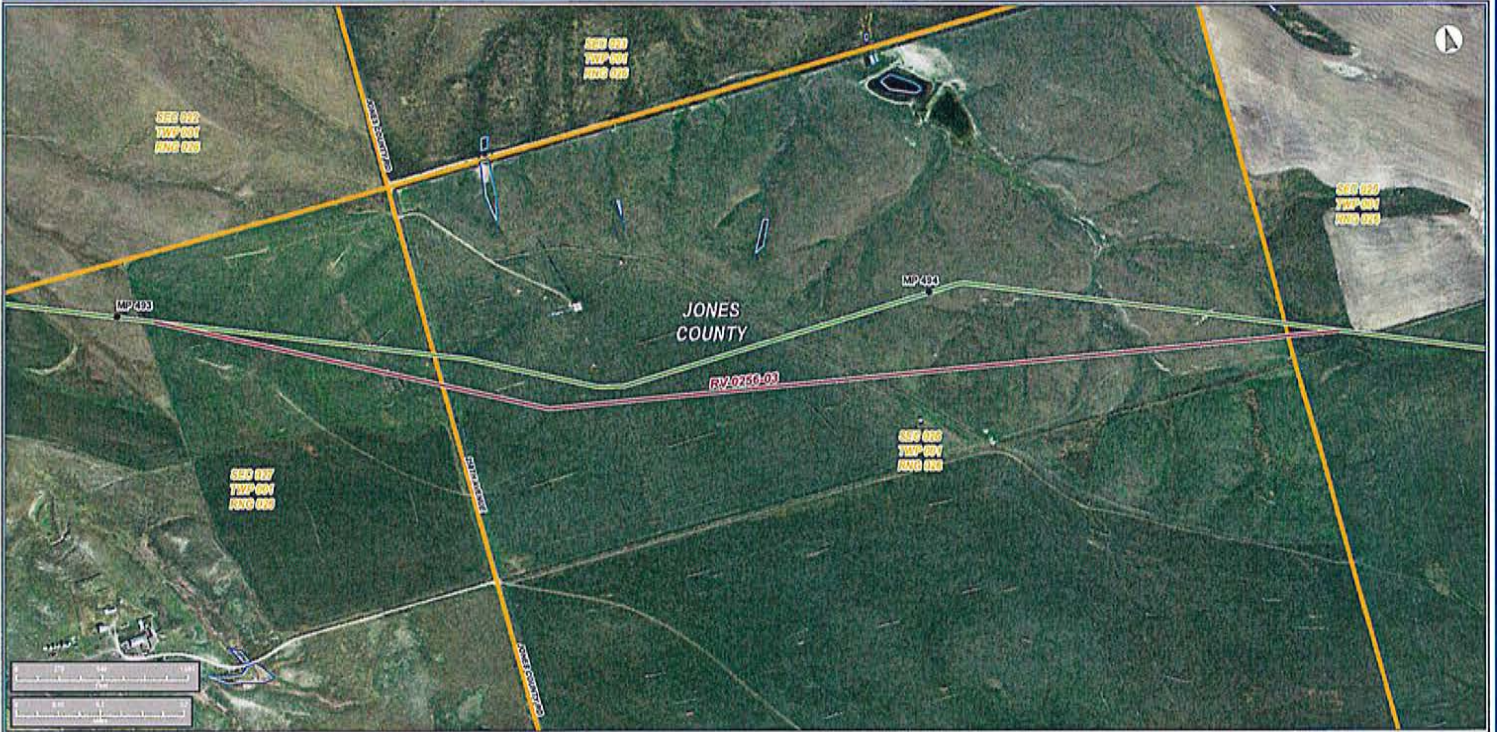
KEYSTONE XL PROJECT
ROUTE VARIATION 0260-03

COUNTY:	04026	DRAWN BY:	CS
STATE:	SD	CHECKED BY:	RY
REV. NO.:	1	REVISION:	DATE
		REVISED FOR:	2014-07-23
PRELIMINARY			
DATE:	2014-07-23	PROJECT:	448712014-03
DRG.:	04026-000-000-000	SHEET:	04026-03

DESIGNED BY
exp Energy Services Inc.
 T. +1.800.365.5441
 F. +1.800.365.5023
 130 METROPOLITAN BLVD.
 TALLAHASSEE, FL 32308, USA
 WWW.EXP.COM

• BUILDINGS • EARTH & ENVIRONMENT • ENERGY •
 • INDUSTRIAL • INFRASTRUCTURE • SUSTAINABILITY •

KEYSTONE XL PROJECT



LEGEND

- MILEPOST**
- ROUTE VARIATION (RV)
- ISSUED CENTERLINE AT TIME OF RV*
- ▭ WATERBODY
- ▭ COUNTY LINE
- ▭ SECTION LINE

*CL DATE AT THE TIME OF RV APPROVAL - 2012-03-14
 **MP OF THE ISSUED CL AT THE TIME OF RV APPROVAL

KEYSTONE XL PROJECT
ROUTE VARIATION 0256-03

COUNTY	JONES	DRAWN BY	SS
STATE	SOUTH DAKOTA	CHECKED BY	JY
REV. NO.	REVISION	DATE	
A	ISSUED FOR REVIEW	2012-03-14	
PRELIMINARY			
DATE	2/25/12	PROJECT	KEYSTONE XL
DRG.	0256-03-03	SHEET	0256-03

DESIGNED BY
exp Energy Services Inc.
 T: +1 800 345 5441
 F: +1 800 345 5023
 1300 METROPOLITAN BLVD.
 TALLAHASSEE, FL 32308, USA
www.exp.com

• BUILDINGS • EARTH & ENVIRONMENT • ENERGY •
 • INDUSTRIAL • INFRASTRUCTURE • SUSTAINABILITY •



LEGEND

- MILEPOST**
- ROUTE VARIATION (RV)
- ISSUED CENTERLINE AT TIME OF RV*
- ☒ WATERBODY
- ☒ COUNTY LINE
- ☒ SECTION LINE

*CL DATE AT THE TIME OF RV APPROVAL - 2012-07-17
 **MP OF THE ISSUED CL AT THE TIME OF RV APPROVAL

KEYSTONE XL PROJECT
ROUTE VARIATION 0310-01

COUNTY:	JONES	ENGINEER:	SI
STATE:	SOUTH DAKOTA	DESIGNED BY:	RS
REV. NO.:	1	REVISION:	DATE
1	ISSUED FOR REVIEW		2014-01-14
PRELIMINARY			
DATE:	2014-01-14	APPROVAL:	DATE: 2014-01-14

PROPOSED BY:
exp Energy Services Inc.
 T: +1.800.345.5441
 F: +1.800.345.5523
 130 METROPOLETAN BLVD.
 TALLAHASSEE, FL 32308, USA
 www.exp.com

• BUILDINGS • EARTH & ENVIRONMENT • ENERGY •
 • INDUSTRIAL • INFRASTRUCTURE • SUSTAINABILITY •



LEGEND

- MILEPOST**
- ROUTE VARIATION (RV)
- ISSUED CENTERLINE AT TIME OF RV*
- ▭ WATERBODY
- ▭ COUNTY LINE
- ▭ SECTION LINE

*CL DATE AT THE TIME OF RV APPROVAL - 2013-03-14
 **MP OF THE ISSUED CL AT THE TIME OF RV APPROVAL

KEYSTONE XL PROJECT			
ROUTE VARIATION 0256-02			
COUNTY: JONES	DRAWN BY: CJ	DATE:	
STATE: SOUTH DAKOTA	DESIGNED BY: JF	DATE:	
REV NO:	REVISION	DATE	
A	FOR R&G REVIEW	2014-07-01	
PRELIMINARY			
DATE:	2/15/14	PROJECT:	KEYSTONE XL
DWG:	0551-001-001-02	SHEET:	0256-02

PROPOSED BY
exp Energy Services Inc.
 T: +1.800.365.5441
 F: +1.800.365.5523
 1300 METROPOLITAN BLVD.
 TALLAHASSEE, FL 32308 USA
 www.exp.com

• BUILDINGS • EARTH & ENVIRONMENT • ENERGY •
 • INDUSTRIAL • INFRASTRUCTURE • SUSTAINABILITY •



LEGEND

- MILEPOST**
- ROUTE VARIATION (RV)
- ISSUED CENTERLINE AT TIME OF RV*
- ▭ WATERBODY
- ▭ COUNTY LINE
- ▭ SECTION LINE

*CL DATE AT THE TIME OF RV APPROVAL - 2015-08-15
 **MP OF THE ISSUED CL AT THE TIME OF RV APPROVAL

KEYSTONE XL PROJECT
ROUTE VARIATION 0395-05

COUNTY: JONES	DRAWN BY: SJ	
STATE: SOUTH DAKOTA	ENGINEER BY: PJ	
REV. NO.	REVISION	DATE
1	ISSUED FOR PERMITS	2/15/15
PRELIMINARY		
DATE:	2/15/15	PROJECT:

POWERED BY
exp Energy Services Inc.
 T: +1.800.365.5441
 F: +1.800.365.5523
 1300 METROPOLITAN BLVD.
 TALLAHASSEE, FL 32308, USA
 www.exp.com

exp.

• BUILDINGS • EARTH & ENVIRONMENT • ENERGY •
 • INDUSTRIAL • INFRASTRUCTURE • SUSTAINABILITY •

DATE: 2/15/15 PROJECT: 140121701-0 SHEET: 15-0000000-00-00 SHEET: 001 OF 020

SOUTH DAKOTA ROUTE VARIATION - 0289-02 (2014 NAIP IMAGERY)



LEGEND

- MILEPOST**
- ROUTE VARIATION (RV)
- ISSUED CENTERLINE AT TIME OF RV*
- ▭ WATERBODY
- ▭ COUNTY LINE
- ▭ SECTION LINE

*CL DATE AT THE TIME OF RV APPROVAL - 2012-03-14
 **MP OF THE ISSUED CL AT THE TIME OF RV APPROVAL

KEYSTONE XL PROJECT
ROUTE VARIATION 0289-02

COUNTY: JONES	DRAWN BY: SL	
STATE: SOUTH DAKOTA	DESIGNED BY: JFD	
REV NO:	REVISION	DATE
1	ISSUED FOR REVIEW	2012/04/11
PRELIMINARY		
DATE:	PROJECTOR:	SCALE:
2/15/12	14701/07114	1"=1" AS SHOWN

PROPOSED BY
exp Energy Services Inc.
 T: +1 850 365 5441
 F: +1 850 365 5023
 1300 W. TROSPER LANE BLVD.
 TALLAHASSEE, FL 32304, USA
 www.exp.com

exp.

• BUILDINGS • EARTH & ENVIRONMENT • ENERGY •
 • INDUSTRIAL • INFRASTRUCTURE • SUSTAINABILITY •

DATE: 2/15/12 PROJECTOR: 14701/07114 SCALE: 1"=1" AS SHOWN SHEET: P-0289-02

KEYSTONE XL PROJECT

SOUTH DAKOTA ROUTE VARIATION - 0279-01 (2014 NAIP IMAGERY)



LEGEND

- MILEPOST**
- ROUTE VARIATION (RV)
- ISSUED CENTERLINE AT TIME OF RV*
- ▭ WATERBODY
- ▭ COUNTY LINE
- ▭ SECTION LINE

*CL DATE AT THE TIME OF RV APPROVAL - 2013-03-14
 **MP OF THE ISSUED CL AT THE TIME OF RV APPROVAL

KEYSTONE XL PROJECT			
ROUTE VARIATION 0279-01			
COUNTY: JONES	DRAWN BY: GJ	DATE:	
STATE: SOUTH DAKOTA	CHECKED BY: PJ	DATE:	
REV. NO.:	REVISION:	DATE:	
A	REVISED PER PERMITS	2014/01/21	
PRELIMINARY			
DATE:	2/25/14	PROJECT:	WATGJ/0279-01
DWG. NO.:	TS-04-000404-029-01	SHEET:	04-029-01

PREPARED BY
 exp Energy Services Inc.
 T +1.800.365.5441
 F +1.800.365.5523
 1300 METROPOLITAN BLVD.
 TALLAHASSEE, FL 32308, USA
 WWW.EXP.COM

• BUILDINGS • EARTH & ENVIRONMENT • ENERGY •
 • INDUSTRIAL • INFRASTRUCTURE • SUSTAINABILITY •

KEYSTONE XL PROJECT



LEGEND

- MILEPOST**
- ROUTE VARIATION (RV)
- ISSUED CENTERLINE AT TIME OF RV*
- ☒ WATERBODY
- ☒ COUNTY LINE
- ☒ SECTION LINE

*CL DATE AT THE TIME OF RV APPROVAL: 2012-03-14
 **MP OF THE ISSUED CL AT THE TIME OF RV APPROVAL

**KEYSTONE XL PROJECT
 ROUTE VARIATION 0293-01**

COUNTY:	JONES	DRAWN BY:	SL
STATE:	SOUTH DAKOTA	CHECKED BY:	FD
REV NO.:	1	REVISION:	DATE
A	PROJECT FOR REVIEW		2014-01-21
PRELIMINARY			
DATE:	2/16/14	PROJECT:	KE/SL/0293-01
DWG. NO.:	0293-01-001	SHEET:	001 OF 001

PREPARED BY
 exp Energy Services Inc.
 T +1.800.385.5441
 F +1.800.385.5523
 1300 METROPOLITAN BLVD.
 TALLAHASSEE, FL 32304, USA

exp.

• BUILDINGS • EARTH & ENVIRONMENT • ENERGY •
 • INDUSTRIAL • INFRASTRUCTURE • SUSTAINABILITY •



LEGEND

- MILEPOST**
- ROUTE VARIATION (RV)
- ISSUED CENTERLINE AT TIME OF RV*
- ☒ WATERBODY
- ☒ COUNTY LINE
- ☒ SECTION LINE

*CL DATE AT THE TIME OF RV APPROVAL - 2013-06-11
 **MP OF THE ISSUED CL AT THE TIME OF RV APPROVAL

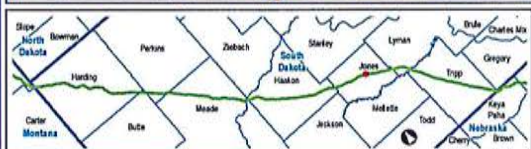
KEYSTONE XL PROJECT
ROUTE VARIATION 0470-03

COUNTY: JONES	DRAWN BY: GJ	
STATE: SOUTH DAKOTA	CHECKED BY: FP	
REV. NO.:	PERSON:	DATE:
1	ISSUED FOR REVIEW	2014/01/21
PRELIMINARY		
DATE:	PROJECTOR:	DWG. NO.:
2014/01/21	PROJECTIONS	0470-03-001

PROPOSED BY:
exp Energy Services Inc.
 T: +1 800 365 5441
 F: +1 800 365 5523
 1300 METROPOLITAN BLVD.
 TALLAHASSEE, FL 32308, USA
 www.exp.com

• BUILDINGS • EARTH & ENVIRONMENT • ENERGY •
 • INDUSTRIAL • INFRASTRUCTURE • SUSTAINABILITY •

DATE: 2014/01/21 PROJECTOR: PROJECTIONS DWG. NO.: 0470-03-001 SHEET: 0470-03



LEGEND

- MILEPOST**
- ROUTE VARIATION (RV)
- ISSUED CENTERLINE AT TIME OF RV*
- ☒ WATERBODY
- ☒ COUNTY LINE
- ☒ SECTION LINE

*CL DATE AT THE TIME OF RV APPROVAL - 2013-06-11
 **MP OF THE ISSUED CL AT THE TIME OF RV APPROVAL

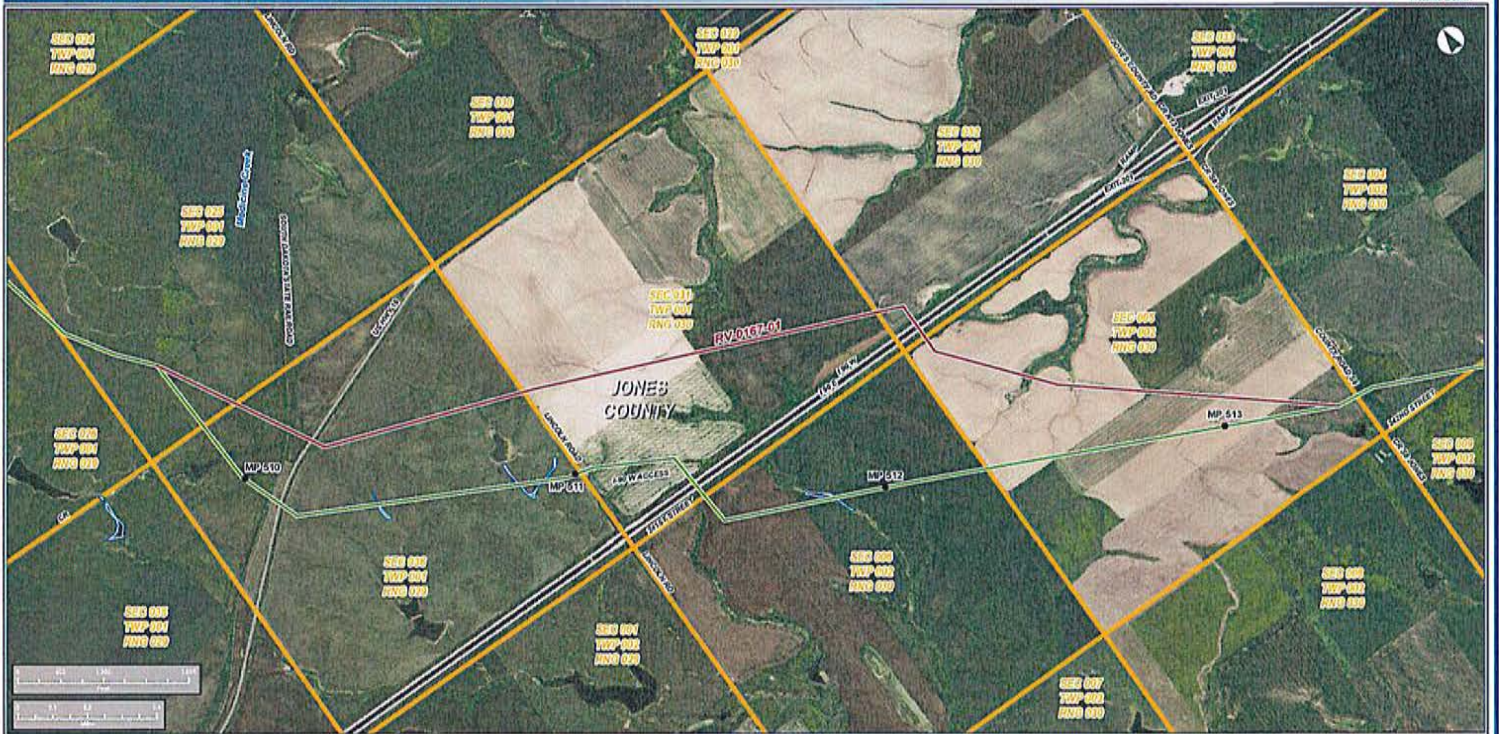
KEYSTONE XL PROJECT
ROUTE VARIATION 0443-05

COUNTY: JONES	DRAWN BY: JG	
STATE: SOUTH DAKOTA	CHECKED BY: TD	
REV. NO.: 1	REVISION	DATE
A	ISSUED FOR REVIEW	2014/01/15
PRELIMINARY		
DATE: 2015-01-15	PROJECT: KEYSSTONE XL	DATE: 14/01/15

PROVIDED BY
exp Energy Services Inc.
 T: +1 850 345 5441
 F: +1 850 345 5523
 1300 METROPOLITAN BLVD.
 TALLAHASSEE, FL 32308, USA
 www.exp.com

• BUILDINGS • EARTH & ENVIRONMENT • ENERGY •
 • INDUSTRIAL • INFRASTRUCTURE • SUSTAINABILITY •

DWG: S:\0443\0443-05\0443-05.DWG SHEET: 05/05



LEGEND

- MILEPOST**
- ROUTE VARIATION (RV)
- ISSUED CENTERLINE AT TIME OF RV*
- ▭ WATERBODY
- ▭ COUNTY LINE
- ▭ SECTION LINE

*CL DATE AT THE TIME OF RV APPROVAL - 2010-03-24
 **MP OF THE ISSUED CL AT THE TIME OF RV APPROVAL

**KEYSTONE XL PROJECT
 ROUTE VARIATION 0167-01**

OWNER: JNES	DESIGNED BY: DS
STATE: SOUTH DAKOTA	CHECKED BY: PS
REV. NO.: REVISION	DATE
A	FOR ISSUE
PRELIMINARY	
DATE: 2/15/12	PROJECT: KEYSXL0167

Prepared by:
exp Energy Services Inc.
 T: +1 850 365 5411
 F: +1 850 365 5523
 100 METROPOLITAN BLVD.
 TALLAHASSEE, FL 32308, USA

• BUILDINGS • EARTH & ENVIRONMENT • ENERGY •
 • INDUSTRIAL • INFRASTRUCTURE • SUSTAINABILITY •

DATE: 2/15/12 PROJECT: KEYSXL0167 SHEET: 055501



LEGEND

- MILEPOST**
- ROUTE VARIATION (RV)
- ISSUED CENTERLINE AT TIME OF RV*
- WATERBODY
- COUNTY LINE
- SECTION LINE

*CL DATE AT THE TIME OF RV APPROVAL - 2013-06-11
 **MP OF THE ISSUED CL AT THE TIME OF RV APPROVAL

**KEYSTONE XL PROJECT
 ROUTE VARIATION 0442-01**

COUNTY: JONES	DRAWN BY: GI	
STATE: SOUTH DAKOTA	CHECKED BY: PT	
REV. NO.:	REVISION	DATE
1	ED FOR REVIEW	2014-01
PRELIMINARY		
DATE:	2014-01	PROJECT:

PREPARED BY
exp Energy Services Inc.
 T +1.800.385.5441
 F +1.800.365.5523
 130 METROPOLITAN BLVD.
 TALLAHASSEE, FL 32304, USA
 www.exp.com

exp.

• BUILDINGS • EARTH & ENVIRONMENT • ENERGY •
 • INDUSTRIAL • INFRASTRUCTURE • SUSTAINABILITY •

DATE: 2014-01 PROJECT: 0442-01-01 SHEET: 0559 OF 020



LEGEND

- MILEPOST**
- ROUTE VARIATION (RV)
- ISSUED CENTERLINE AT TIME OF RV*
- ☒ WATERBODY
- ☒ COUNTY LINE
- ☒ SECTION LINE

*CL DATE AT THE TIME OF RV APPROVAL - 2012-04-18
 **MP OF THE ISSUED CL AT THE TIME OF RV APPROVAL

KEYSTONE XL PROJECT
ROUTE VARIATION 0383-01

COUNTY	JONES	DRAWN BY	SA
STATE	SOUTH DAKOTA	CHECKED BY	JY
REV NO:	REVISION	DATE	
1	ISSUED FOR REVIEW	2012/04/18	
PRELIMINARY			
DATE	2/15/12	PROJECT	1428120114
DRG.	0383-01-001-001	SHEET	001/001

DESIGNED BY
exp Energy Services Inc.
 T: +1.800.345.5441
 F: +1.800.345.5023
 1300 METROPOLITAN BLVD.
 TALLAHASSEE, FL 32308, USA
 WWW.EXP.COM

exp.

• BUILDINGS • EARTH & ENVIRONMENT • ENERGY •
 • INDUSTRIAL • INFRASTRUCTURE • SUSTAINABILITY •



LEGEND

- MILEPOST**
- ROUTE VARIATION (RV)
- ISSUED CENTERLINE AT TIME OF RV*
- ☐ WATERBODY
- ☐ COUNTY LINE
- ☐ SECTION LINE

*CL DATE AT THE TIME OF RV APPROVAL - 2013-06-11
 **MP OF THE ISSUED CL AT THE TIME OF RV APPROVAL

KEYSTONE XL PROJECT
ROUTE VARIATION 0443-02

COUNTY: JONES	DRAWN BY: SI
STATE: SOUTH DAKOTA	CHECKED BY: FD
REV NO:	REVISION
1	REVISED FOR REVIEW
DATE:	2/27/14
PRELIMINARY	
DATE:	2/25/14
PROJECT:	WATG02/07/14
DWG:	TS/PLANS/02/Route/02
SHEET:	04/14/12

PROPOSED BY
exp Energy Services Inc.
 T: 1.800.365.5441
 F: 1.800.365.5523
 1300 METROPOLITAN BLVD.
 TALLAHASSEE, FL 32308, USA
www.exp.com

exp.

• BUILDINGS • EARTH & ENVIRONMENT • ENERGY •
 • INDUSTRIAL • INFRASTRUCTURE • SUSTAINABILITY •



LEGEND

- MILEPOST**
- ROUTE VARIATION (RV)
- ISSUED CENTERLINE AT TIME OF RV*
- WATERBODY
- COUNTY LINE
- SECTION LINE

*CL DATE AT THE TIME OF RV APPROVAL - 2012-03-14
 **MP OF THE ISSUED CL AT THE TIME OF RV APPROVAL

**KEYSTONE XL PROJECT
ROUTE VARIATION 0287-01**

COUNTY:	LYMAN	DRAWN BY:	GS
STATE:	SOUTH DAKOTA	CHECKED BY:	FD
REV. NO.:	REVISION	DATE	
1	ISSUED FOR APPROVAL	2/14/14	
PRELIMINARY			
DATE:	2/14/14	PROJECT NO.:	1406120114
APP.:	EXP/AN/ENR/REG/REG	SHEET:	14061201

PREPARED BY
exp Energy Services Inc.
 T: +1.800.345.5441
 F: +1.800.345.5523
 1300 WEST TROPICATANA BLVD.
 TALLAHASSEE, FL 32308, USA
 www.exp.com

exp.

• BUILDINGS • EARTH & ENVIRONMENT • ENERGY •
 • INDUSTRIAL • INFRASTRUCTURE • SUSTAINABILITY •



LEGEND

- MILEPOST**
- ROUTE VARIATION (RV)
- ISSUED CENTERLINE AT TIME OF RV*
- ☒ WATERBODY
- ☒ COUNTY LINE
- ☒ SECTION LINE

*CL DATE AT THE TIME OF RV APPROVAL - 2010-11-18
 **MP OF THE ISSUED CL AT THE TIME OF RV APPROVAL

KEYSTONE XL PROJECT
ROUTE VARIATION 0199-08

COUNTY:	LYMAN	DRAWN BY:	GI
STATE:	SOUTH DAKOTA	CHECKED BY:	PT
REV NO.:	1	REVISION:	DATE:
A	ISSUED FOR REVIEW:	2010-11-18	
PRELIMINARY			
DATE:	2/15/12	PROJECT:	04512/0114
DWG.:	04512001/0114-B	SHEET:	001/003

PREPARED BY
 exp Energy Services Inc.
 T: +1 800 345 5441
 F: +1 800 345 5523
 1302 METROPOLE PARK BLVD.
 TALLAHASSEE, FL 32308, USA

• BUILDINGS • EARTH & ENVIRONMENT • ENERGY •
 • INDUSTRIAL • INFRASTRUCTURE • SUSTAINABILITY •

SOUTH DAKOTA ROUTE VARIATION - 0443-01 (2014 NAIP IMAGERY)



LEGEND

- MILEPOST**
- ROUTE VARIATION (RV)
- ISSUED CENTERLINE AT TIME OF RV*
- WATERBODY
- COUNTY LINE
- SECTION LINE

*CL DATE AT THE TIME OF RV APPROVAL - 2012-04-11
 **MP OF THE ISSUED CL AT THE TIME OF RV APPROVAL

KEYSTONE XL PROJECT
ROUTE VARIATION 0443-01

COUNTY:	LIJUN	DRAWN BY:	CS
STATE:	SOUTH DAKOTA	CHECKED BY:	FD
REV NO:	REVISION	DATE	
1	EDGES FOR REVIEW	2014/11/17	
PRELIMINARY			
DATE:	2014-11-17	PROJECT:	140612/01/01
APP:	0443-01/01/01	HEET:	04/04/01

DESIGNED BY
exp Energy Services Inc.
 T: +1 800.365.5441
 F: +1 800.365.5023
 130 METROPOLITAN BLVD.
 TALLAHASSEE, FL 32308 USA
 www.exp.com

• BUILDINGS • EARTH & ENVIRONMENT • ENERGY •
 • INDUSTRIAL • INFRASTRUCTURE • SUSTAINABILITY •

KEYSTONE XL PROJECT

SOUTH DAKOTA ROUTE VARIATION - 0216-01 (2014 NAIP IMAGERY)



LEGEND

- MILEPOST**
- ROUTE VARIATION (RV)
- ISSUED CENTERLINE AT TIME OF RV*
- WATERBODY
- COUNTY LINE
- SECTION LINE

*CL DATE AT THE TIME OF RV APPROVAL - 2010-11-18
 **MP OF THE ISSUED CL AT THE TIME OF RV APPROVAL

KEYSTONE XL PROJECT
ROUTE VARIATION 0216-01

COUNTY:	LYMAN	DRAWN BY:	SA
STATE:	SOUTH DAKOTA	DATE:	PP
REV. NO.:	REVISION	DATE:	
PRELIMINARY			

POWERED BY
exp Energy Services Inc.
 T: +1 800 345 5441
 F: +1 800 345 5523
 1300 W. TROPICATAN BLVD.
 TALLAHASSEE, FL 32308 USA
www.exp.com

exp.

• BUILDINGS • EARTH & ENVIRONMENT • ENERGY •
 • INDUSTRIAL • INFRASTRUCTURE • SUSTAINABILITY •

KEYSTONE XL PROJECT

SOUTH DAKOTA ROUTE VARIATION - 0216-02 (2014 NAIP IMAGERY)



LEGEND

- MILEPOST**
- ROUTE VARIATION (RV)
- ISSUED CENTERLINE AT TIME OF RV*
- WATERBODY
- COUNTY LINE
- SECTION LINE

*CL DATE AT THE TIME OF RV APPROVAL - 2010-11-18
 **MP OF THE ISSUED CL AT THE TIME OF RV APPROVAL

KEYSTONE XL PROJECT
ROUTE VARIATION 0216-02

COUNTY:	TRIPP	DRAWN BY:	SL
STATE:	SD/74 24-074	CHECKED BY:	JP
REV. NO.:	REVISION:	DATE:	
A	ISSUED FOR PERMITS	2016-01-14	
PRELIMINARY			
DATE:	2016-01-14	PROJECT:	44061-0216-02
DWG:	44061-0216-02-02	SHEET:	04/05

PREPARED BY
exp Energy Services Inc.
 T +1.800.345.5441
 F +1.800.345.5023
 1300 WEIRWOOD LANE BLVD.
 TALLAHASSEE, FL 32308 USA
www.exp.com

exp.

• BUILDINGS • EARTH & ENVIRONMENT • ENERGY •
 • INDUSTRIAL • INFRASTRUCTURE • SUSTAINABILITY •

KEYSTONE XL PROJECT



LEGEND

- MILEPOST**
- ROUTE VARIATION (RV)
- ISSUED CENTERLINE AT TIME OF RV*
- WATERBODY
- COUNTY LINE
- SECTION LINE

*CL DATE AT THE TIME OF RV APPROVAL - 2012-06-11
 **MP OF THE ISSUED CL AT THE TIME OF RV APPROVAL

KEYSTONE XL PROJECT
ROUTE VARIATION 0512-03

COUNTY: TRIPP	DRAWN BY: JJ	
STATE: SD/NE/MT	CHECKED BY: PJ	
REV NO:	REVISION	DATE
1	FOR REVIEW	2/24/12
PRELIMINARY		
DATE:	PROJECT:	SHEET:
2/24/12	KEYSTONE XL	0567

PROPOSED BY:
exp Energy Services Inc.
 T +1.800.345.5441
 F +1.800.345.5523
 1300 METROPOLITAN BLVD.
 TALLAHASSEE, FL 32304 USA
 www.exp.com

exp.

• BUILDINGS • EARTH & ENVIRONMENT • ENERGY •
 • INDUSTRIAL • INFRASTRUCTURE • SUSTAINABILITY •

SOUTH DAKOTA ROUTE VARIATION - 0314-01 (2014 NAIP IMAGERY)



LEGEND

- MILEPOST**
- ROUTE VARIATION (RV)
- ISSUED CENTERLINE AT TIME OF RV*
- WATERBODY
- COUNTY LINE
- SECTION LINE

*CL DATE AT THE TIME OF RV APPROVAL - 2013-07-13
 **MP OF THE ISSUED CL AT THE TIME OF RV APPROVAL

KEYSTONE XL PROJECT
ROUTE VARIATION 0314-01

COUNTY: TRIPP	DRAWN BY: JJ
STATE: SOUTH DAKOTA	CHECKED BY: PJ
REV NO: 000001	DATE: 2/14/14
A	EDUCATION REVIEW: 2/14/14
PRELIMINARY	
DATE: 2/14/14	PROJECT: 140511/0114
DWG: 14-05-01/01/01-01	SHEET: 01/01/01

PREPARED BY
exp Energy Services Inc.
 T +1.850.381.5411
 F +1.850.381.5423
 130 METROPOLITAN BLVD.
 TALLAHASSEE, FL 32310, USA
 WWW.EXP.COM

• BUILDINGS • EARTH & ENVIRONMENT • ENERGY •
 • INDUSTRIAL • INFRASTRUCTURE • SUSTAINABILITY •

KEYSTONE XL PROJECT



LEGEND

- MILEPOST**
- ROUTE VARIATION (RV)
- ISSUED CENTERLINE AT TIME OF RV*
- ☒ WATERBODY
- ☒ COUNTY LINE
- ☒ SECTION LINE

*CL DATE AT THE TIME OF RV APPROVAL - 2012-04-15
 **MP OF THE ISSUED CL AT THE TIME OF RV APPROVAL

KEYSTONE XL PROJECT
ROUTE VARIATION 0395-06

COUNTY: TRIPP	DRAWN BY: SJ
STATE: SOUTH DAKOTA	CHECKED BY: JPD
REV. NO.: 1	DATE: 04/15/12
PRELIMINARY	
DATE: 05/01/12	PROJECT: 140511/01/12
DWG: 0395-06-001-01	SHEET: 01/01

PREPARED BY:
exp Energy Services Inc.
 F +1.888.345.5441
 P +1.888.345.5023
 130 W. PENNSYLVANIA BLVD.
 TALLAHASSEE, FL 32308, USA
 www.exp.com

exp.

• BUILDINGS • EARTH & ENVIRONMENT • ENERGY •
 • INDUSTRIAL • INFRASTRUCTURE • SUSTAINABILITY •



LEGEND

- MILEPOST**
- ROUTE VARIATION (RV)
- ISSUED CENTERLINE AT TIME OF RV*
- ☒ WATERBODY
- ☒ COUNTY LINE
- ☒ SECTION LINE

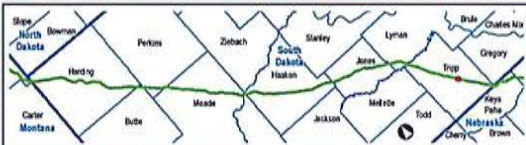
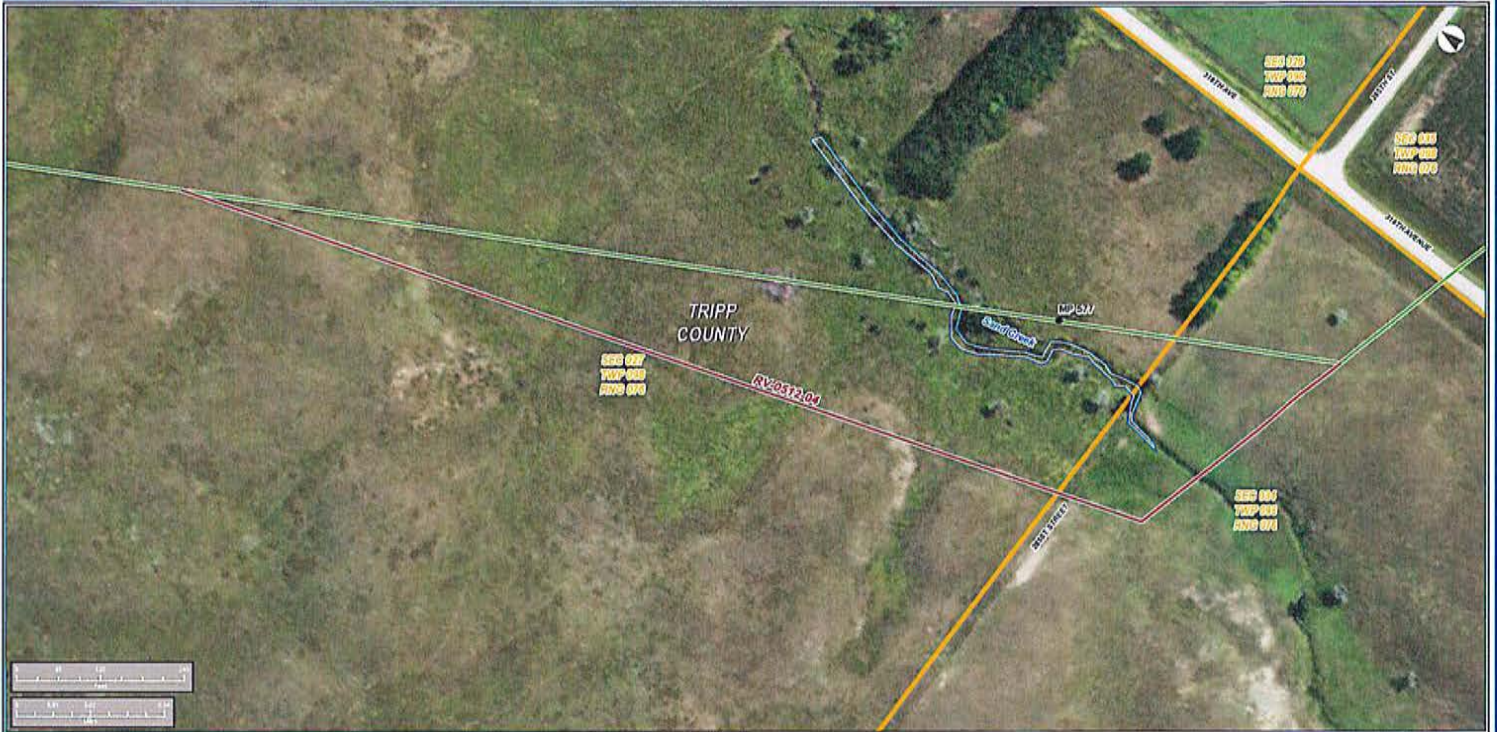
*CL DATE AT THE TIME OF RV APPROVAL - 2010-11-19
 **MP OF THE ISSUED CL AT THE TIME OF RV APPROVAL

KEYSTONE XL PROJECT
ROUTE VARIATION 0199-09

COUNTY: TRIPP	DRAWN BY: GA
STATE: SD/ND/DE/MT	CHECKED BY: PS
REV. NO.:	REVISION:
DATE:	DATE:
PRELIMINARY	
DATE: 2010-02	PROJECT: KEYSX
DATE: 2010-02	PROJECT: KEYSX

PROVIDED BY
exp Energy Services Inc.
 T +1.800.355.5441
 F +1.800.355.5523
 1300 METROPOLITAN BLVD.
 TALLAHASSEE, FL 32304, USA
 www.exp.com

• BUILDINGS • EARTH & ENVIRONMENT • ENERGY •
 • INDUSTRIAL • INFRASTRUCTURE • SUSTAINABILITY •



LEGEND

- MILEPOST**
- ROUTE VARIATION (RV)
- ISSUED CENTERLINE AT TIME OF RV**
- WATERBODY
- COUNTY LINE
- SECTION LINE

**CL DATE AT THE TIME OF RV APPROVAL - 2013-04-11
 **MP OF THE ISSUED CL AT THE TIME OF RV APPROVAL

KEYSTONE XL PROJECT
 ROUTE VARIATION 0512-04

COUNTY	TRIPP	SECTION	51
STATE	SOUTH DAKOTA	SECTION NO.	RV
REV. NO.	1	DATE	2013-04-11
PRELIMINARY			
DATE	2013-04-11	PROJECT	XP0512-04
DWG.	0512-04-001	SHEET	0512-04

POWERED BY
exp Energy Services Inc.
 T + 1-800-345-5441
 F + 1-800-345-5823
 1300 METROPOLITAN BLVD.
 TALLAHASSEE, FL 32308 USA
 www.exp.com

• BUILDINGS • EARTH & ENVIRONMENT • ENERGY •
 • INDUSTRIAL • INFRASTRUCTURE • SUSTAINABILITY •



LEGEND

- MILEPOST**
- ROUTE VARIATION (RV)
- ISSUED CENTERLINE AT TIME OF RV*
- ☒ WATERBODY
- ☒ COUNTY LINE
- ☒ SECTION LINE

*CL DATE AT THE TIME OF RV APPROVAL - 2010-11-18
 **MP OF THE ISSUED CL AT THE TIME OF RV APPROVAL

KEYSTONE XL PROJECT
 ROUTE VARIATION 0195-01

COUNTY:	Tripp	SECTION:	51
STATE:	South Dakota	SECTION BY:	JF
REV. NO.:	001	DATE:	2014-01-21

PRELIMINARY

DATE:	2/16/14	PROJECT:	1406120114	DWG:	TRIP001ROUTE01	SHEET:	04/140
-------	---------	----------	------------	------	----------------	--------	--------

PREPARED BY
exp Energy Services Inc.
 P + 1 800 345 5441
 F + 1 800 345 5823
 1300 METROPOLITAN BLVD.
 TALLAHASSEE, FL 32308, USA
 www.exp.com

- BUILDINGS • EARTH & ENVIRONMENT • ENERGY •
- INDUSTRIAL • INFRASTRUCTURE • SUSTAINABILITY •

SOUTH DAKOTA ROUTE VARIATION - 0528-01 (2014 NAIP IMAGERY)



LEGEND

- MILEPOST**
- ROUTE VARIATION (RV)
- ISSUED CENTERLINE AT TIME OF RV*
- ▭ WATERBODY
- ▭ COUNTY LINE
- ▭ SECTION LINE

*CL DATE AT THE TIME OF RV APPROVAL - 2013-04-11
 **MP OF THE ISSUED CL AT THE TIME OF RV APPROVAL

KEYSTONE XL PROJECT
ROUTE VARIATION 0528-01

COUNTY: Tripp	DRAWN BY: SJ	
STATE: SD/74 24-074	CREATED BY: PJ	
REV. NO:	REVISION	DATE
1	ISSUED FOR PERMITS	20140124
PRELIMINARY		
DATE:	DRAWN:	PROJECT:

POWERED BY
exp Energy Services Inc.
 T +1.800.365.5441
 F +1.800.365.5523
 1300 METROPOLITAN BLVD.
 TALLAHASSEE, FL 32308, USA
www.exp.com

• BUILDINGS • EARTH & ENVIRONMENT • ENERGY •
 • INDUSTRIAL • INFRASTRUCTURE • SUSTAINABILITY •

KEYSTONE XL PROJECT



LEGEND

- MILEPOST**
- ROUTE VARIATION (RV)
- ISSUED CENTERLINE AT TIME OF RV*
- ☒ WATERBODY
- ☒ COUNTY LINE
- ☒ SECTION LINE

*CL DATE AT THE TIME OF RV APPROVAL - 2010-11-18
**MP OF THE ISSUED CL AT THE TIME OF RV APPROVAL

KEYSTONE XL PROJECT
ROUTE VARIATION 0215-04

COUNTY: Tripp	DRAWN BY: GJ	
STATE: SOUTH DAKOTA	CHECKED BY: PJ	
REV. NO:	REVISION	DATE
1	ISSUED FOR PERMIT	2014-02
PRELIMINARY		
DATE:	DRAWN BY:	PROJ. NO.:

PROPOSED BY
exp Energy Services Inc.
T +1.800.365.5441
F +1.800.365.5523
1300 METROPOLITAN BLVD.
TALLAHASSEE, FL 32308, USA
www.exp.com

• BUILDINGS • EARTH & ENVIRONMENT • ENERGY •
• INDUSTRIAL • INFRASTRUCTURE • SUSTAINABILITY •

DATE: 2/25/14 PROJ. NO: 14001215-04 SHE: 05-000-001-0215-04



LEGEND

- MILEPOST**
- ROUTE VARIATION (RV)
- ISSUED CENTERLINE AT TIME OF RV*
- WATERBODY
- COUNTY LINE
- SECTION LINE

*CL DATE AT THE TIME OF RV APPROVAL - 2013-03-14
 **MP OF THE ISSUED CL AT THE TIME OF RV APPROVAL

KEYSTONE XL PROJECT
ROUTE VARIATION 0294-01

COUNTY:	TRIPP	DRAWN BY:	SL
STATE:	SOUTH DAKOTA	DESIGNED BY:	FD
REV. NO.:	REVISION	DATE:	
1	ISSUED FOR REVIEW	2014-02-19	
PRELIMINARY			
DATE:	2014-02-19	APPROVED:	142063/02/14
DWG. NO.:	0294-01-01	SHEET:	01 of 01

PREPARED BY:
exp Energy Services Inc.
 T: +1 800 345 5441
 F: +1 800 345 5523
 1200 METROPOLITAN BLVD.
 TALLAHASSEE, FL 32308, USA
www.exp.com

exp.

• BUILDINGS • EARTH & ENVIRONMENT • ENERGY •
 • INDUSTRIAL • INFRASTRUCTURE • SUSTAINABILITY •

SOUTH DAKOTA ROUTE VARIATION - 0214-02 (2014 NAIP IMAGERY)



LEGEND

- MILEPOST**
- ROUTE VARIATION (RV)
- ISSUED CENTERLINE AT TIME OF RV*
- ☒ WATERBODY
- ☒ COUNTY LINE
- ☒ SECTION LINE

*CL DATE AT THE TIME OF RV APPROVAL - 2010-11-18
 **MP OF THE ISSUED CL AT THE TIME OF RV APPROVAL

KEYSTONE XL PROJECT
ROUTE VARIATION 0214-02

COUNTY: TRIPP	DRAWN BY: GJ
STATE: SOUTH DAKOTA	CHECKED BY: PJ
REV. NO.:	REVISION:
A	ISSUED FOR PERMIT
	DATE: 2014-02
PRELIMINARY	
DATE: 2/25/14	PROJECT: KEYSX0576
DWG: 0576A0501-0214-02	SHEET: 0576A05

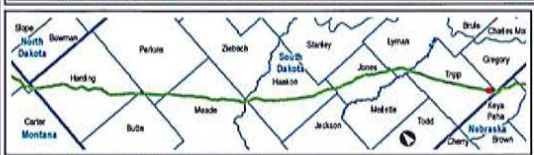
POWERED BY
exp Energy Services Inc.
 T: +1.800.345.5441
 F: +1.800.345.5023
 1300 METROPOLITAN BLVD.
 TALLAHASSEE, FL 32308, USA
www.exp.com

exp.

• BUILDINGS • EARTH & ENVIRONMENT • ENERGY •
 • INDUSTRIAL • INFRASTRUCTURE • SUSTAINABILITY •

KEYSTONE XL PROJECT

SOUTH DAKOTA ROUTE VARIATION - 0172-01 (2014 NAIP IMAGERY)



LEGEND

- MILEPOST**
- ROUTE VARIATION (RV)
- ISSUED CENTERLINE AT TIME OF RV*
- ☒ WATERBODY
- ☒ COUNTY LINE
- ☒ SECTION LINE

KEYSTONE XL PROJECT
ROUTE VARIATION 0172-01

COUNTY:	TRIPP	DRAWN BY:	SL
STATE:	SOUTH DAKOTA	CHECKED BY:	FD
REV. NO.:	1	REVISION:	DATE
A	FOR KCS FOR REVIEW		20161217
PRELIMINARY			
DATE:	20161217	PRELIMINARY	140021001010

PREPARED BY
exp Energy Services Inc.
T: +1 800.365.5441
F: +1 800.365.5523
1300 METROPOLITAN BLVD.
TALLAHASSEE, FL 32308, USA
www.exp.com

exp.

• BUILDINGS • EARTH & ENVIRONMENT • ENERGY •
• INDUSTRIAL • INFRASTRUCTURE • SUSTAINABILITY •

KEYSTONE XL PROJECT

*CL DATE AT THE TIME OF RV APPROVAL - 2016-03-30
**MP OF THE ISSUED CL AT THE TIME OF RV APPROVAL

SOUTH DAKOTA ROUTE VARIATION - 0178-01 (2014 NAIP IMAGERY)



LEGEND

- MILEPOST**
- ROUTE VARIATION (RV)
- ISSUED CENTERLINE AT TIME OF RV*
- ☒ WATERBODY
- ☒ COUNTY LINE
- ☒ SECTION LINE

*CL DATE AT THE TIME OF RV APPROVAL - 2010-03-24
 **MP OF THE ISSUED CL AT THE TIME OF RV APPROVAL

KEYSTONE XL PROJECT
ROUTE VARIATION 0178-01

COUNTY: TRIPP	DRAWN BY: GJ
STATE: SOUTH DAKOTA	CHECKED BY: PD
REV NO:	REVISION
A	ISSUED FOR REVIEW
	DATE
	2/14/11
PRELIMINARY	
DATE:	2/15/11
PROJECT:	14002/0178-01
DWG:	14002-0178-01-01

PREPARED BY
exp Energy Services Inc.
 T: +1 800 365 5441
 F: +1 800 365 5023
 1300 METROPOLITAN BLVD.
 TALLAHASSEE, FL 32304, USA
 www.exp.com

exp.

• BUILDINGS • EARTH & ENVIRONMENT • ENERGY •
 • INDUSTRIAL • INFRASTRUCTURE • SUSTAINABILITY •

KEYSTONE XL PROJECT



LEGEND

- MILEPOST**
- ROUTE VARIATION (RV)
- ISSUED CENTERLINE AT TIME OF RV*
- ☐ WATERBODY
- ☐ COUNTY LINE
- ☐ SECTION LINE

*CL DATE AT THE TIME OF RV APPROVAL: 2012-04-15
 **MP OF THE ISSUED CL AT THE TIME OF RV APPROVAL

KEYSTONE XL PROJECT
ROUTE VARIATION 0395-07

COUNTY: TRIPP	DRAWN BY: GJ	
STATE: SOUTH DAKOTA	CHECKED BY: FD	
REV NO:	REVISION	DATE
1	FOR REVIEW	2/28/12
PRELIMINARY		
DATE:	2/28/12	PROJECT:

DESIGNED BY
exp Energy Services Inc.
 T +1.800.345.5441
 F +1.800.345.5523
 130 METROPOLITAN BLVD.
 TALLAHASSEE, FL 32308 USA
 www.exp.com

exp.

- BUILDINGS • EARTH & ENVIRONMENT • ENERGY •
- INDUSTRIAL • INFRASTRUCTURE • SUSTAINABILITY •

DATE: 2/28/12 PROJECT: KEYSTONE XL SHEET: 0579



LEGEND

- MILEPOST**
- ROUTE VARIATION (RV)
- ISSUED CENTERLINE AT TIME OF RV*
- WATERBODY
- COUNTY LINE
- SECTION LINE

*CL DATE AT THE TIME OF RV APPROVAL - 2012-03-14
 **MP OF THE ISSUED CL AT THE TIME OF RV APPROVAL

KEYSTONE XL PROJECT
ROUTE VARIATION 0295-01

COUNTY: TRIPP	DRAWN BY: SJ
STATE: SOUTH DAKOTA	CHECKED BY: PJ
REV NO:	REVISION
A	ISSUED FOR REVIEW
DATE:	2012-03-14
PRELIMINARY	
DATE:	2012-03-14
PROJECT:	KEYSTONE XL
APP:	PLANNING/DESIGN
ENR:	0295-01

PREPARED BY
exp Energy Services Inc.
 T: +1 850 345 5441
 F: +1 850 345 5023
 1300 METROPOLITAN BLVD.
 TALLAHASSEE, FL 32308, USA

exp.

• BUILDINGS • EARTH & ENVIRONMENT • ENERGY •
 • INDUSTRIAL • INFRASTRUCTURE • SUSTAINABILITY •