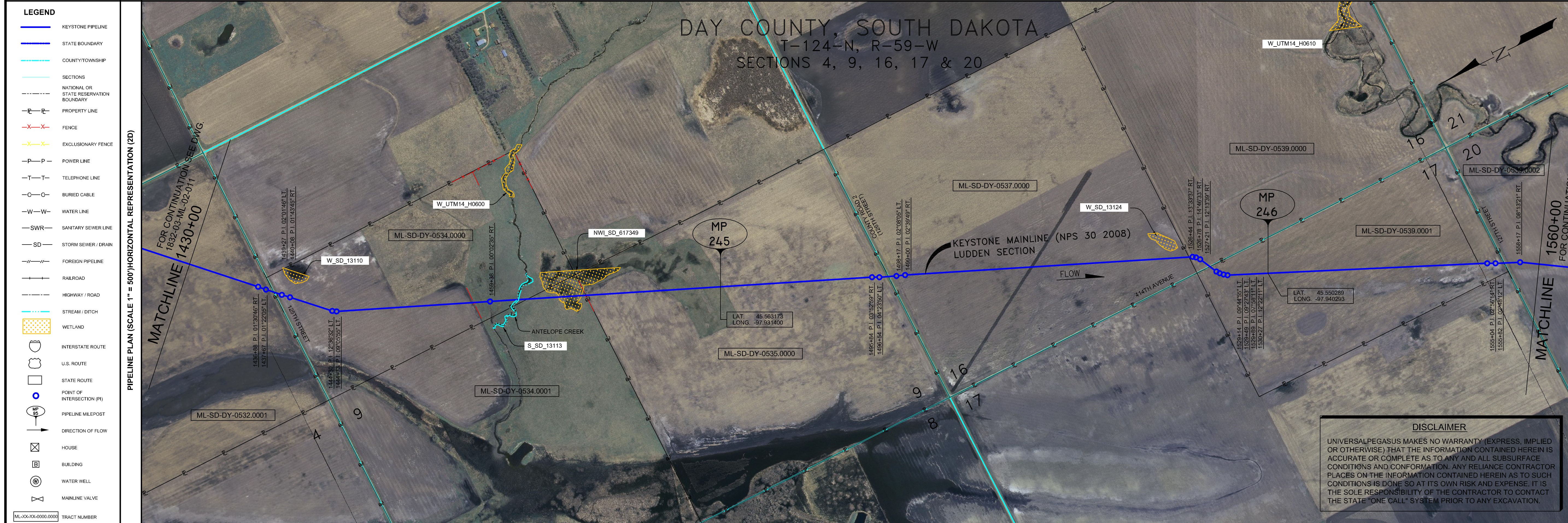


RIGHT-OF-WAY HORIZONTAL REPRESENTATION (2D)	MILEPOSTS														
	1430+00	1440+00	1450+00	1460+00	1470+00	1480+00	1490+00	1500+00	1510+00	1520+00	1530+00	1540+00	1550+00	1560+00	
TRACT NUMBER	ML-SD-DY-0532.0001		ML-SD-DY-0534.0000			ML-SD-DY-0534.0001		ML-SD-DY-0535.0000			ML-SD-DY-0539.0000		ML-SD-DY-0539.0001		ML-SD-DY-0539.0002
OWNERSHIP/AGENCY	1438+46		1488+43			1487+41		1528+38		1556+62					
LAND USE															

- GENERAL NOTES**
- 1) ALL CHAINAGES ARE IN FEET UNLESS OTHERWISE SPECIFIED.
 - 2) DATUM ELEVATION AND PROJECTION ARE BASED ON MEAN SEA LEVEL AND NAD 83.
 - 3) FIELD PIPE LOCATING REQUIRED TO DETERMINE PLACEMENT OF PIPELINE WITHIN PERMANENT EASEMENT.
 - 4) UNLESS OTHERWISE NOTED, 48 INCHES MINIMUM COVER EXCEPT 36 INCHES IN AREAS OF CONSOLIDATED ROCK.
 - 5) NO ACTUAL AS-BUILT GROUND SHOTS WERE TAKEN AT THIS LOCATION. THE PROFILE REPRESENTS A PROJECTION FROM SHOTS TAKEN AT 150' TO 250' INTERVALS.
 - 6) THE TYPE OF COATING APPLIED TO THE FIELD WELDS DURING THE ORIGINAL CONSTRUCTION WAS TWO COMPONENT LIQUID EPOXY. THE COATING PRODUCTS USED WERE DENSO 7200 OR SPC 5P-2888.
 - 7) THE SUBSTANTIAL CONSTRUCTION COMPLETION DATE, BASED ON CALPWR FIG RUN, WAS AND SEPTEMBER 01, 2009 FOR M.P. 195.68 TO M.P. 218.50, SEPTEMBER 02, 2009 FOR M.P. 218.50 TO M.P. 259.00 AND OCTOBER 08, 2009 FOR M.P. 259.21 TO M.P. 301.75.
 - 8) ORIGINAL IN-SERVICE DATE OF THE KEYSTONE PIPELINE (PHASE 1): JUNE 30, 2010.
 - 9) CPS CALCULATION DATE: MAY 2010.
 - 10) ORION STATION SERIES NUMBER: 1182700.



OPERATING AND TEST PRESSURE

1. THE MAXIMUM OPERATING PRESSURE (MOP) IS 1440 PSIG.
2. THE MINIMUM TEST PRESSURE WAS 190 PSIG.

BILL OF MATERIALS (3D)

ITEM NO.	DESCRIPTION	QUANTITY
2	30" O.D. X 0.388" W.T. API 5L-X70 WFBE COATING	12,547'
3	30" O.D. X 0.516" W.T. API 5L-X70 WFBE COATING & ABRASION RESISTANT OVERCOAT	467'

- LEGEND**
- KEYSTONE PIPELINE
 - STATE BOUNDARY
 - COUNTY/TOWNSHIP
 - SECTIONS
 - NATIONAL OR STATE RESERVATION BOUNDARY
 - PROPERTY LINE
 - FENCE
 - EXCLUSIONARY FENCE
 - POWER LINE
 - TELEPHONE LINE
 - BURIED CABLE
 - WATER LINE
 - SANITARY SEWER LINE
 - STORM SEWER / DRAIN
 - FOREIGN PIPELINE
 - RAILROAD
 - HIGHWAY / ROAD
 - STREAM / DITCH
 - WETLAND
 - INTERSTATE ROUTE
 - U.S. ROUTE
 - STATE ROUTE
 - POINT OF INTERSECTION (PI)
 - PIPELINE MILEPOST
 - DIRECTION OF FLOW
 - HOUSE
 - BUILDING
 - WATER WELL
 - MAINLINE VALVE

REFERENCE DRAWINGS

REF. NO.	DRAWING NO.	REV. NO.	DRAWING TITLE

REVISIONS

NO.	DATE	REV. BY	CHKD. BY	APPRD. BY	ENV. APPROV. BY	DESCRIPTION
1	5/17/09	UEI	RDG	LAG	SEC	ISSUED FOR CONSTRUCTION
2	10/17/09	UEI				ISSUED FOR AS-BUILT
						1832-03-ML-02-012
						REPLACES COVERAGE OF IFC DRAWINGS
						1832-03-ML-02-018
						1832-03-ML-02-019
						1832-03-ML-02-020

ENGINEERING RECORDS

DRAWN BY	INITIAL		DATE	ENV. APPROV.	INITIAL		DATE
	BY	BY			BY	BY	
CHECKED BY			10/02/01	APPRD. BY			
				COMPANY APPROVED			

PIPELINE SCHEMATIC	HORIZONTAL STATIONS (2D)	PIPELINE DATA	PIPELINE DESCRIPTION	SLOPE STATIONS (3D)	PIPELINE DATA
HEAVY WALL PIPE	1430+00				
WELD FITTING					
TRANSITION PIECE					
CASING PIPE					
CONCRETE COATING					
SET-ON WEIGHTS					
PIPELINE WARNING SIGN					
PIPELINE MARKER					
MATERIAL ITEM					
GROUNDING MAT					
ZINC RIBBON					
AERIAL MARKER					
CATHODIC TEST STATION					
MINILINE VALVE					
CHECK VALVE					
OPEN CUT					
BORING					
DRINKING WATER USA					
EEOLOGICAL USA					
HIGHLY POPULATED AREA					
OPERATOR (KEYSTONE) DEFINED					
OTHER POPULATED AREA					
SOURCE WATER PROTECTION AREA					
WELLHEAD PROTECTION AREA					

PROFESSIONAL ENGINEER

NAME	STATE	LIC#	REV#	DATE
LOYS ALVIN GRAY, III	SD	CE9004		

SCALE: 1" = 250 Feet

TEST SECTIONS (3D)	TEST SECTION 2A-4 ILTO-024-2010
TOPSOIL SALVAGE METHOD	
STREAMS	
WETLANDS	
TIMING CONSTRAINTS	
STATIONS	
MONITORING	
RECLAMATION	
SPECIAL CONSIDERATIONS	

AS-BUILT ALIGNMENT

M.P. 244.03 TO M.P. 246.49

SHEET 12 OF 19 SHEETS

STA. 1430+84 TO STA. 1560+91 (3D)

DRAWING NO. 1832-03-ML-02-012

KEYSTONE MAINLINE (NPS 30 2008) LUDDEN SECTION