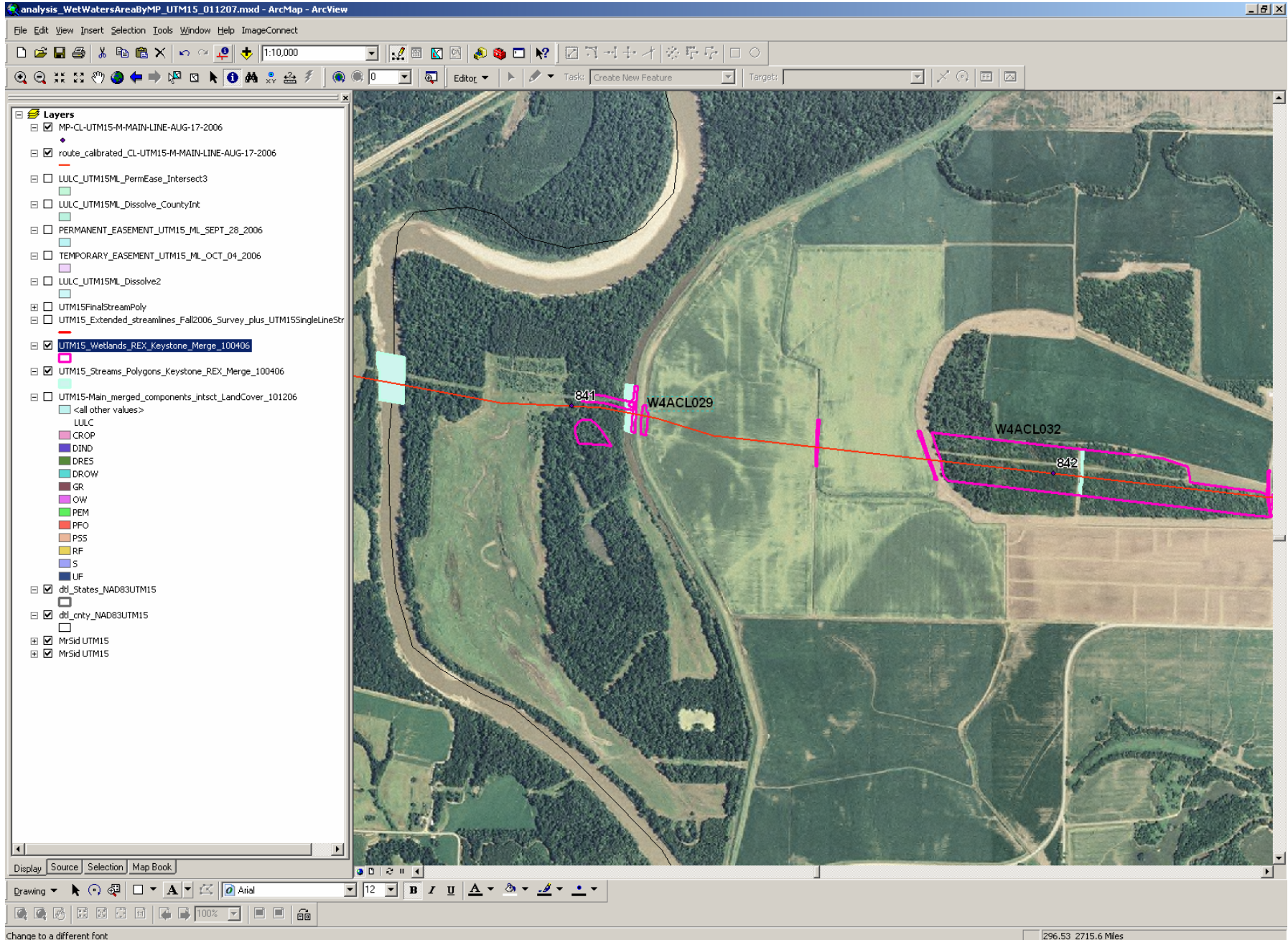
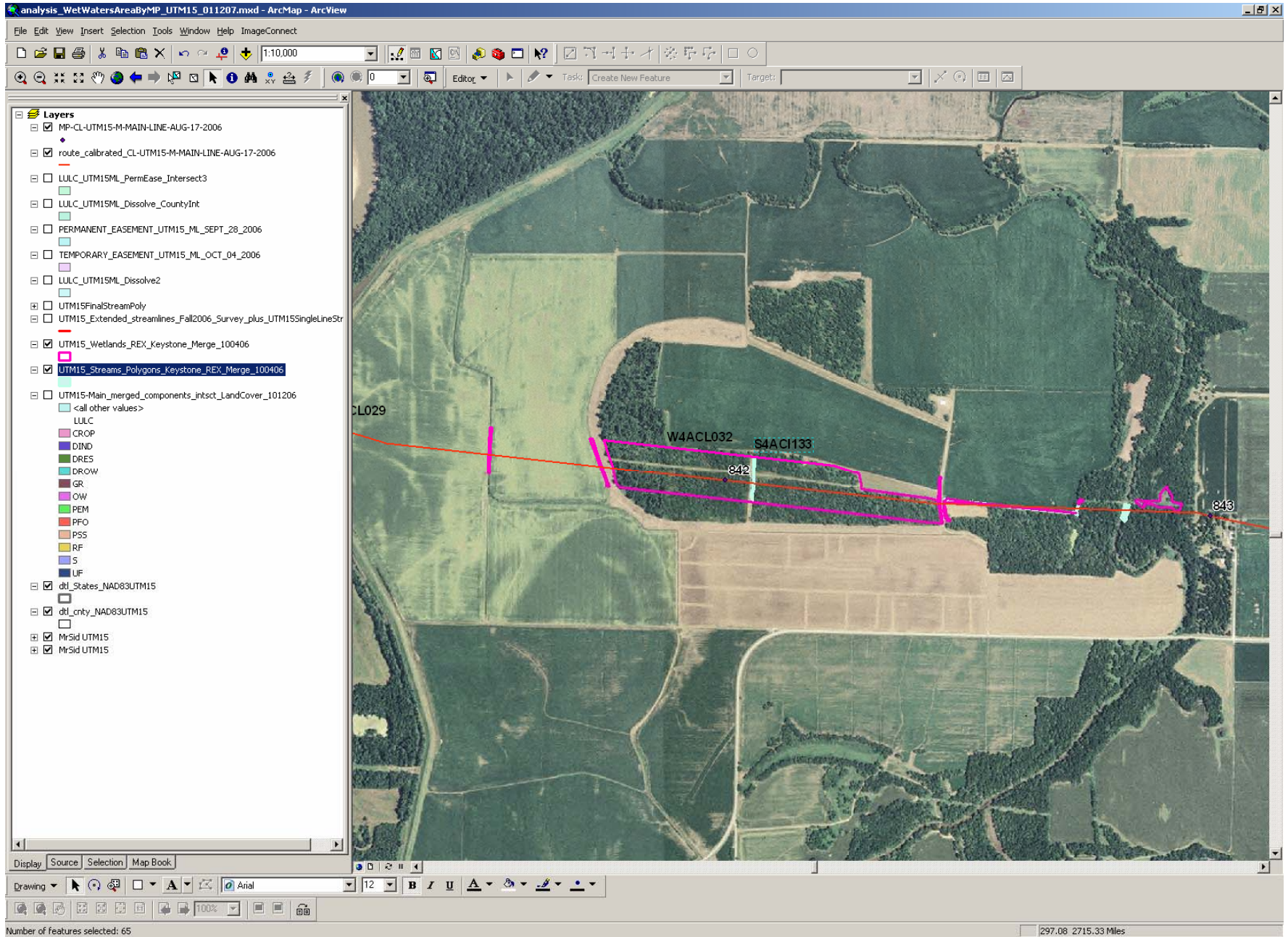


FEATURE: W4ACI029



FEATURE: W4ACI032 & S4ACI133



FEATURE: W4ACI021

The screenshot displays the ArcMap interface for a project named "analysis_WetWatersAreaByMP_UTM15_011207.mxd". The map shows a rural landscape with fields, forests, and a stream. A red line represents a road, and a pink polygon highlights the feature W4ACI021. The stream is shown in light blue, and the road is labeled with the number 849. The feature W4ACI021 is located near the stream and the road. The map also shows a road labeled 850. The Layers panel on the left lists various data layers, including "UTM15_Streams_Polygons_Keystone_REX_Merge_100406" which is highlighted. The map is displayed at a scale of 1:10,000. The status bar at the bottom indicates "Number of features selected: 65" and "305.06 2714.71 Miles".

Layers Panel:

- MP-CL-UTM15-M-MAIN-LINE-AUG-17-2006
- route_calibrated_CL-UTM15-M-MAIN-LINE-AUG-17-2006
- LULC_UTM15ML_PermEase_Intersect3
- LULC_UTM15ML_Dissolve_CountyInt
- PERMANENT_EASEMENT_UTM15_ML_SEPT_28_2006
- TEMPORARY_EASEMENT_UTM15_ML_OCT_04_2006
- LULC_UTM15ML_Dissolve2
- UTM15FinalStreamPoly
- UTM15_Extended_streamlines_Fall2006_Survey_plus_UTM15SingleLineStr
- UTM15_Wetlands_REX_Keystone_Merge_100406
- UTM15_Streams_Polygons_Keystone_REX_Merge_100406
- UTM15-Main_merged_components_intsct_LandCover_101206
- <all other values>
- LULC
 - CROP
 - DIND
 - DRES
 - DR-OW
 - GR
 - OW
 - PEM
 - PFO
 - PSS
 - RF
 - S
 - UF
- dtl_States_NAD83UTM15
- dtl_cnty_NAD83UTM15
- MrSid UTM15
- MrSid UTM15

Map Labels: 849, W4ACI021, 850

Status Bar: Number of features selected: 65 | 305.06 2714.71 Miles