

FEATURE: W3ABC007 & W3ABC007A

analysis_WetWatersAreaByMP_UTM15_011207.mxd - ArcMap - ArcView

File Edit View Insert Selection Tools Window Help ImageConnect

1:10,000

Editor Task: Create New Feature Target:

Layers

- MP-CL-UTM15-M-MAIN-LINE-AUG-17-2006
 - route_calibrated_CL-UTM15-M-MAIN-LINE-AUG-17-2006
- LULC_UTM15ML_PermEase_Intersect3
- LULC_UTM15ML_Dissolve_CountyInt
- PERMANENT_EASEMENT_UTM15_ML_SEPT_28_2006
- TEMPORARY_EASEMENT_UTM15_ML_OCT_04_2006
- LULC_UTM15ML_Dissolve2
- UTM15FinalStreamPoly
- UTM15_Extended_streamlines_Fall2006_Survey_plus_UTM15SingleLineStr
- UTM15_Wetlands_REX_Keystone_Merge_100406
- UTM15_Streams_Polygons_Keystone_REX_Merge_100406
- UTM15-Main_merged_components_intsct_LandCover_101206
 - <all other values>
 - LULC
 - CROP
 - DIND
 - DRES
 - DROW
 - GR
 - OW
 - PEM
 - PFO
 - PSS
 - RF
 - S
 - UF
- dtl_States_NAD83UTM15
- dtl_cnty_NAD83UTM15
- MrSid UTM15
- MrSid UTM15

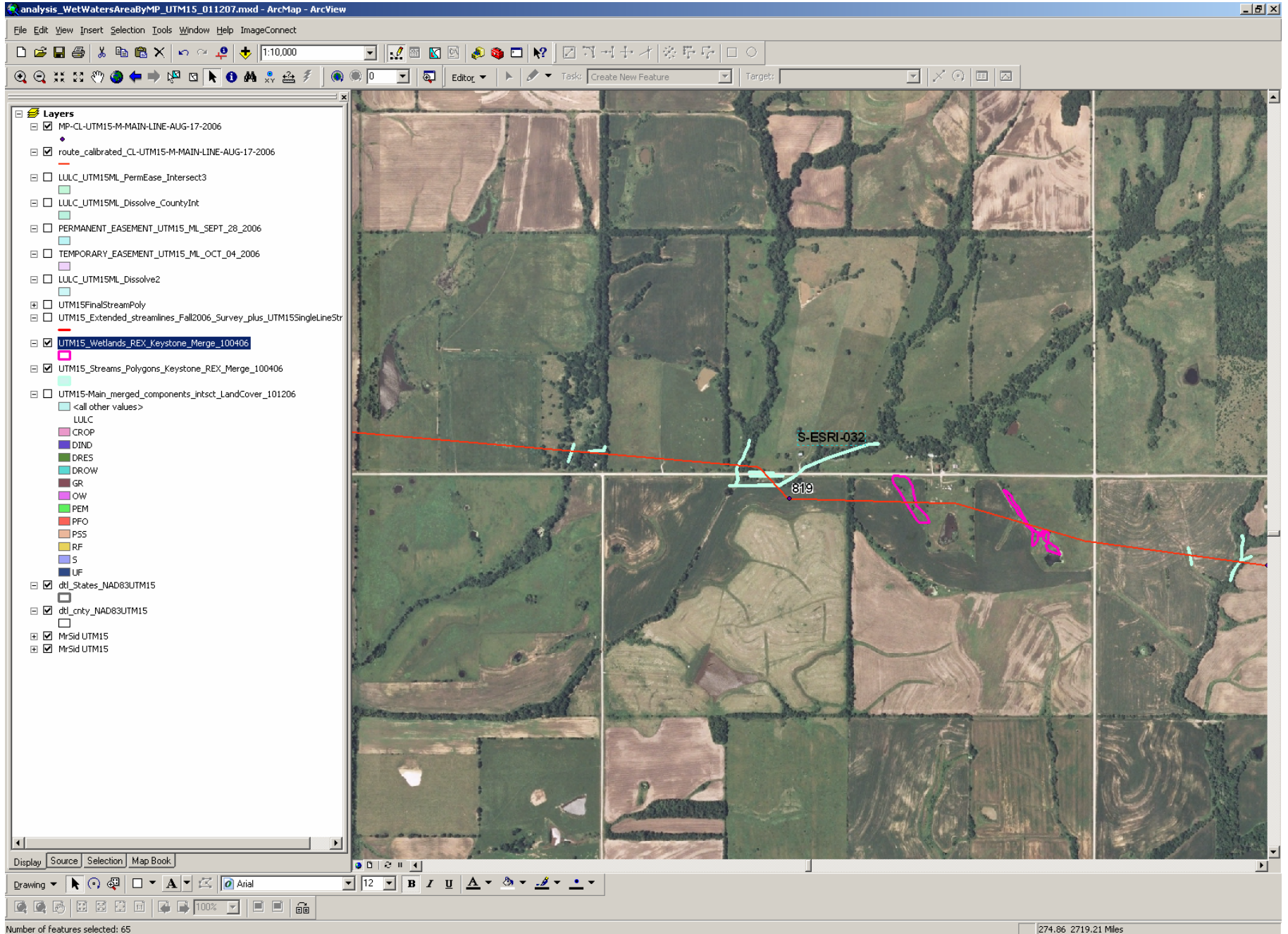
Display Source Selection Map Book

Drawing 12 Arial B I U A

Number of features selected: 65

219.8 2727.9 Miles

FEATURE: S_ESRI_032



FEATURE: W3ACR010

