

# Carlyle Agricultural PE Wetlands

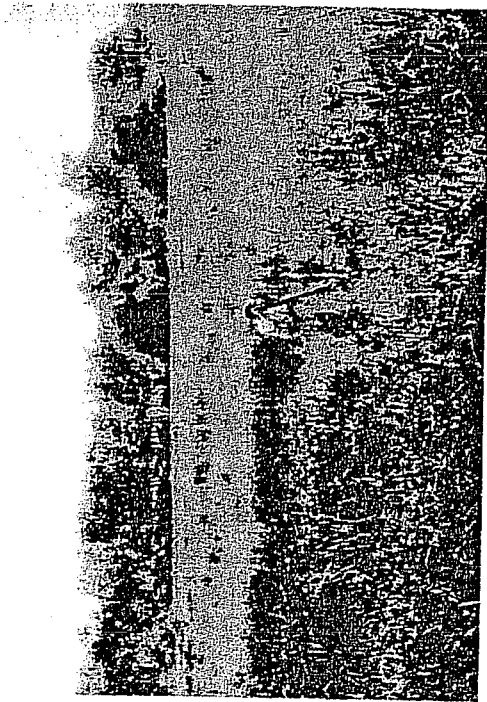


Photo 1687

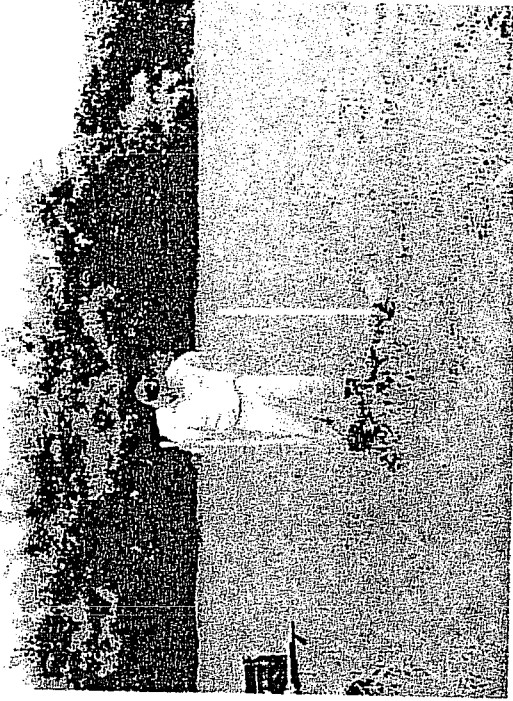


Photo 1689



Photo 1696



Photo 1699

**B-05**

Benchmark Ecological Services, Inc

Equilon 2Rivers Project

# Black Willow Wetlands



Photo 1657

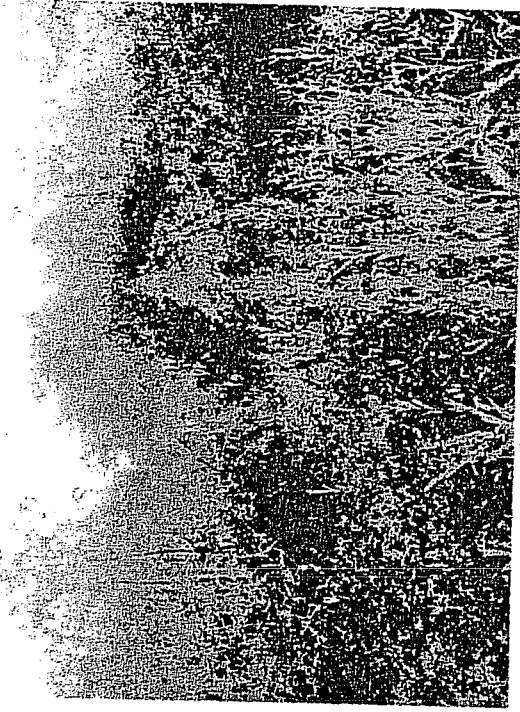


Photo 1659

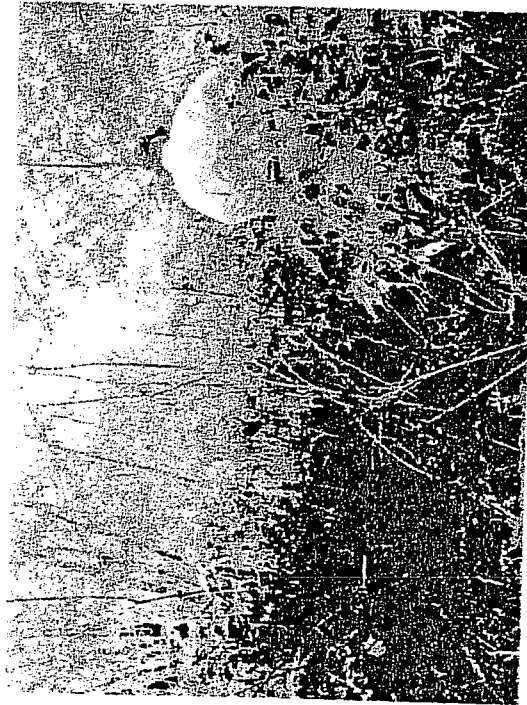


Photo 1663



Photo 1664

**B-06**

Benchmark Ecological Services, Inc

Equilon 2Rivers Project

# Box-elder Wetlands



Photo 1725



Photo 1745



Photo 1781



Photo 1782

**B-07**

Benchmark Ecological Services, Inc

Equilon 2Rivers Project

# Box-elder/Maple Wetlands



Photo 1783

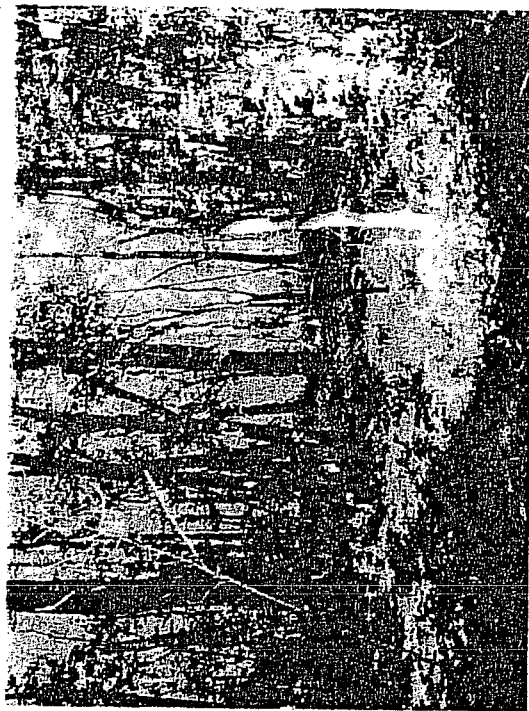


Photo 1785



Photo 1787



Photo 1788

**B-08**

# Silver Maple Wetlands

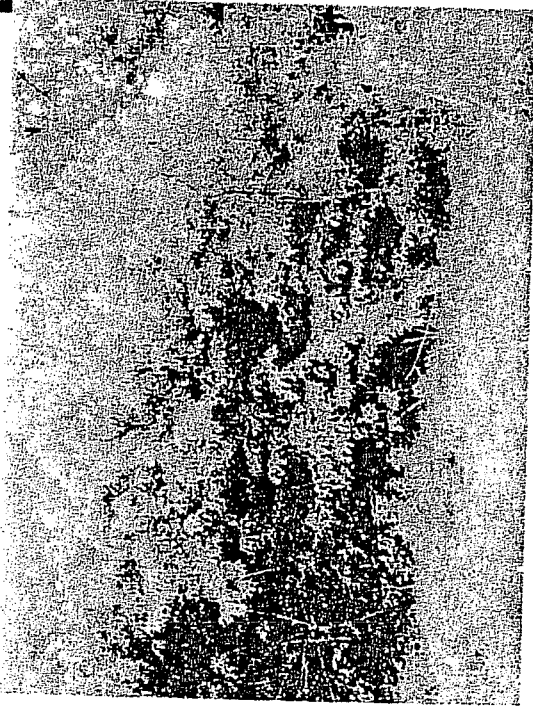


Photo 1691

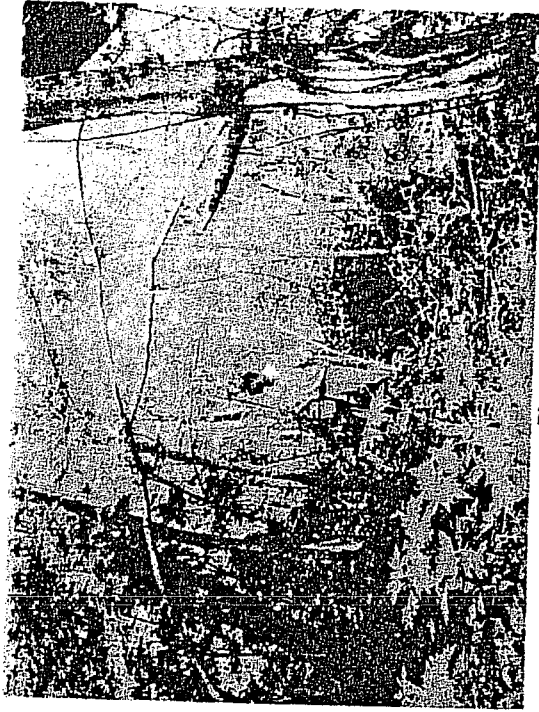


Photo 1692



Photo 1694



Photo 1697

**B-09**

**Benchmark Ecological Services, Inc**

**Equilon 2Rivers Project**

# Cottonwood Wetland



Photo 1741

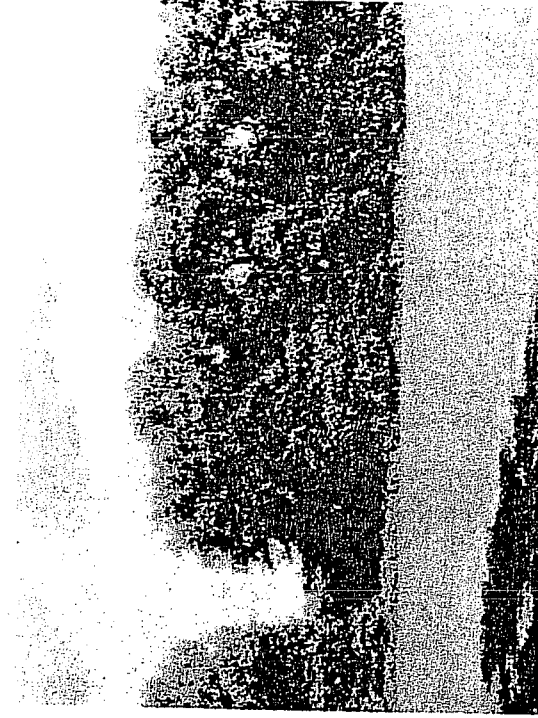


Photo 1742

# Willow/Cottonwood Wetland

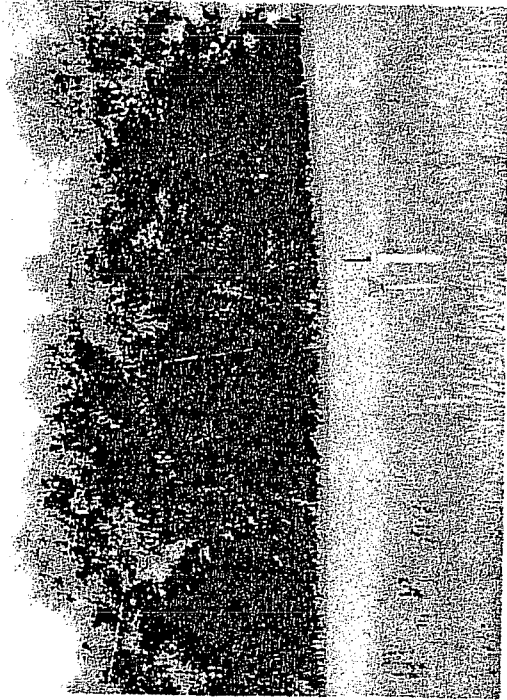


Photo 1801



Photo 1802

# Upland Forest



Photo 1727

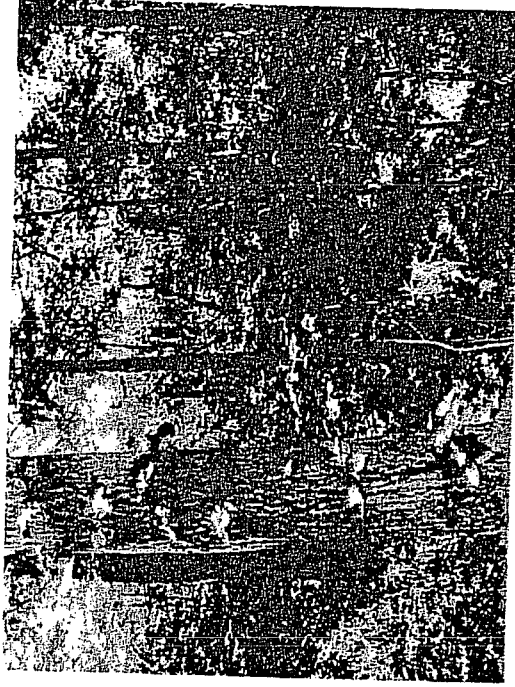


Photo 1728

**B-12**

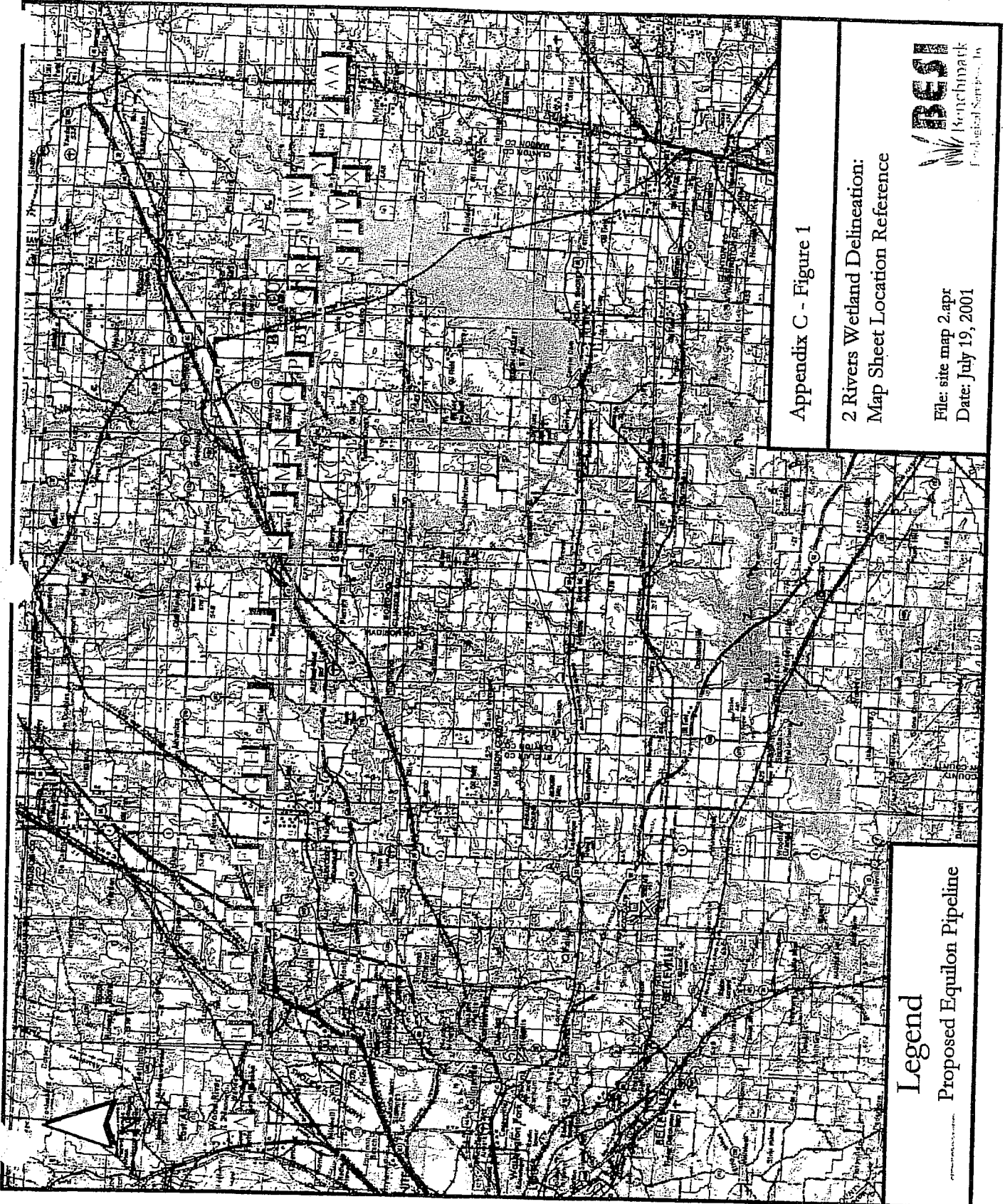
Benchmark Ecological Services, Inc

Equilon 2 Rivers Project



## **Appendix C**

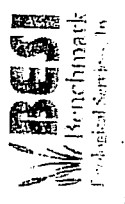
### **2Rivers Pipeline Wetland and Stream Crossing Location Maps**



Appendix C - Figure 1

2 Rivers Wetland Delineation:  
Map Sheet Location Reference

**Legend**  
Proposed Equilon Pipeline



File: site map 2.apr  
Date: July 19, 2001

## **Appendix B**

### **2Rivers Pipeline Site Photographs**

# PE Wetlands



Photo 1647

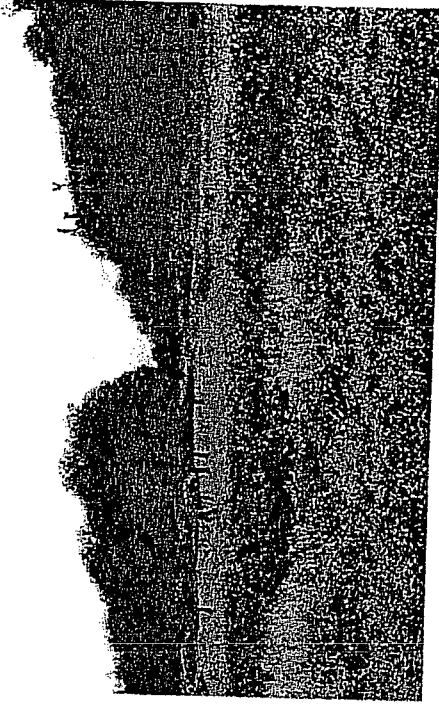


Photo 1649

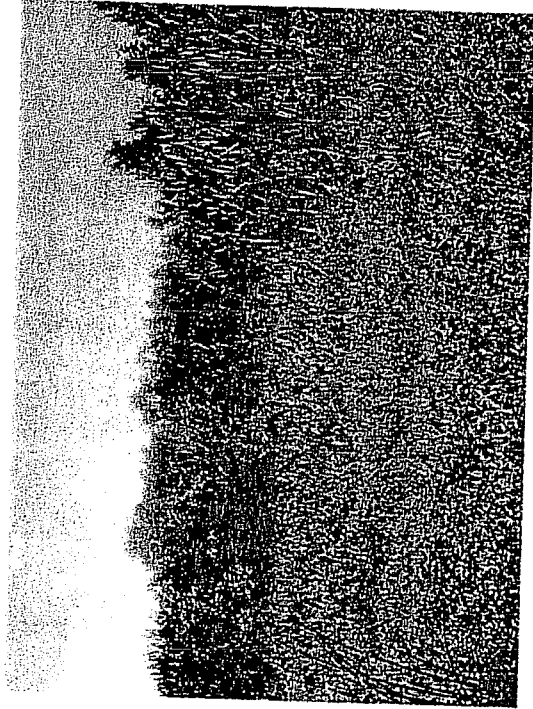


Photo 1671



Photo 1672

Benchmark Ecological Services, Inc

B-01

Equilon 2Rivers Project

# PE Wetlands



Photo 1718

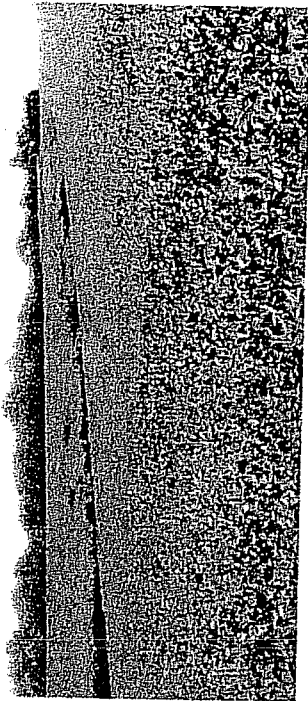


Photo 1723

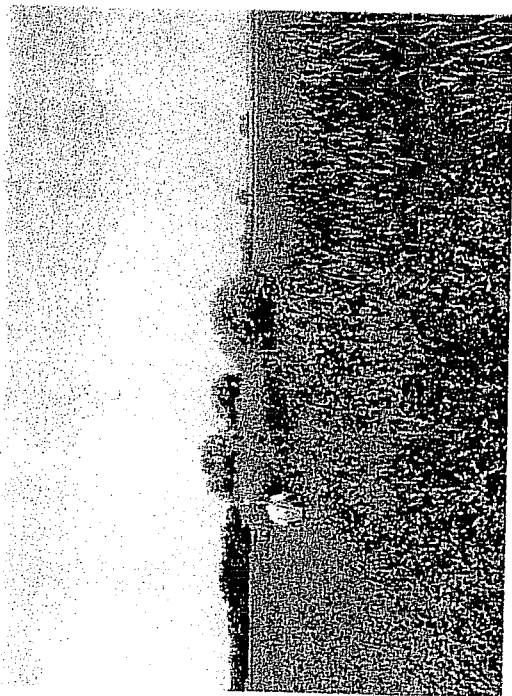


Photo 1729

Benchmark Ecological Services, Inc

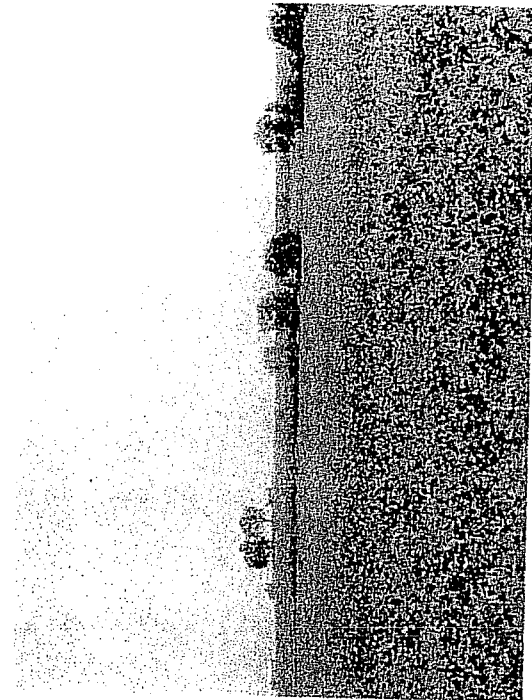


Photo 1732

Benchmark Ecological Services, Inc

B-02

Equilon 2Rivers Project

# PE Wetlands



Photo 1772

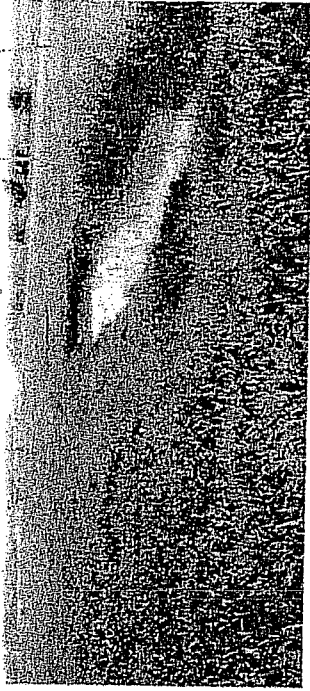


Photo 1798

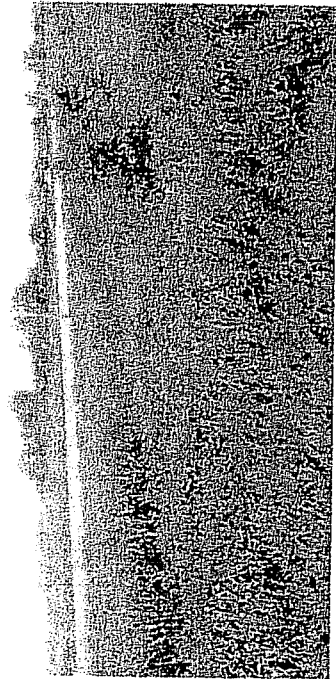


Photo 1799



Photo 1800

Benchmark Ecological Services, Inc

B-03

Equilon 2Rivers Project

# PE Wetlands



Photo 1737

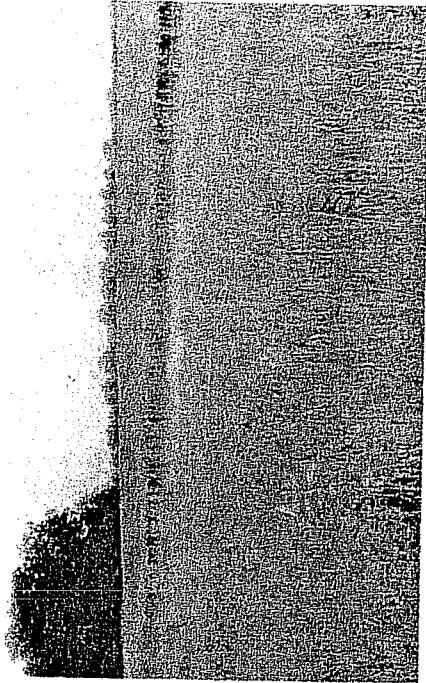


Photo 1769

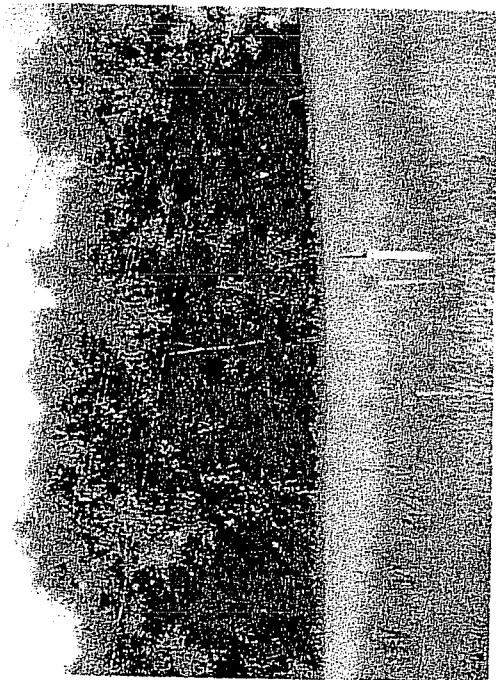


Photo 1801

Benchmark Ecological Services, Inc

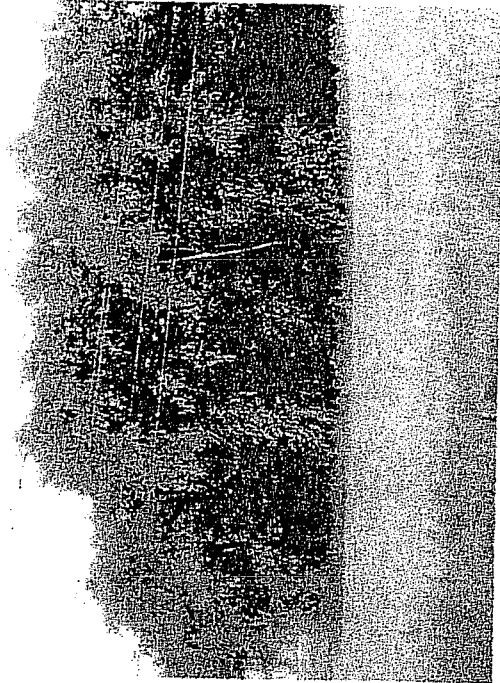


Photo 1802

Equillon 2Rivers Project

B-04

# Carlyle Agricultural PE Wetlands

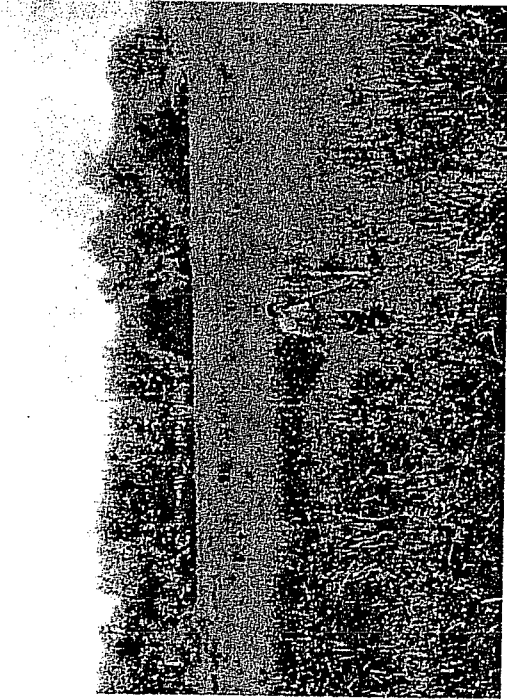


Photo 1687

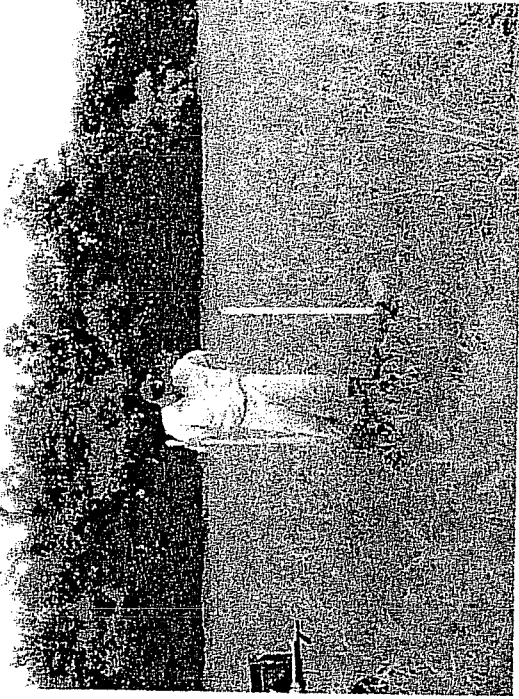


Photo 1689

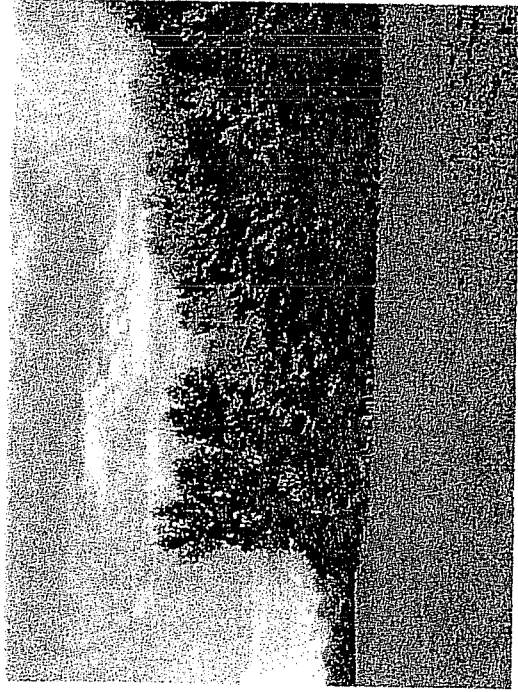


Photo 1696

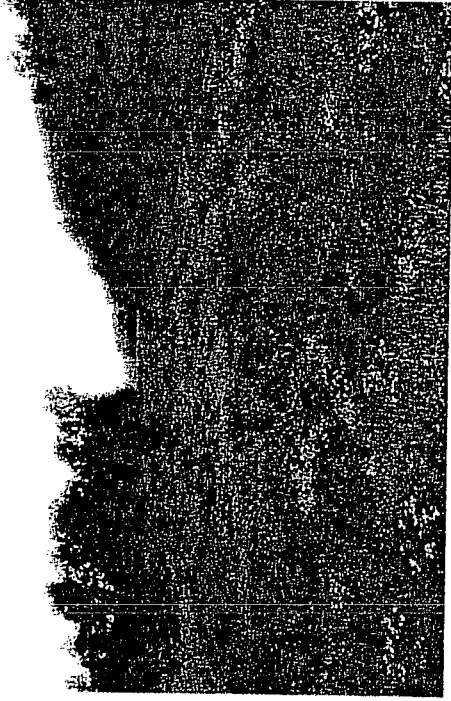


Photo 1699

**B-05**

Benchmark Ecological Services, Inc

Equilon 2Rivers Project



# Black Willow Wetlands

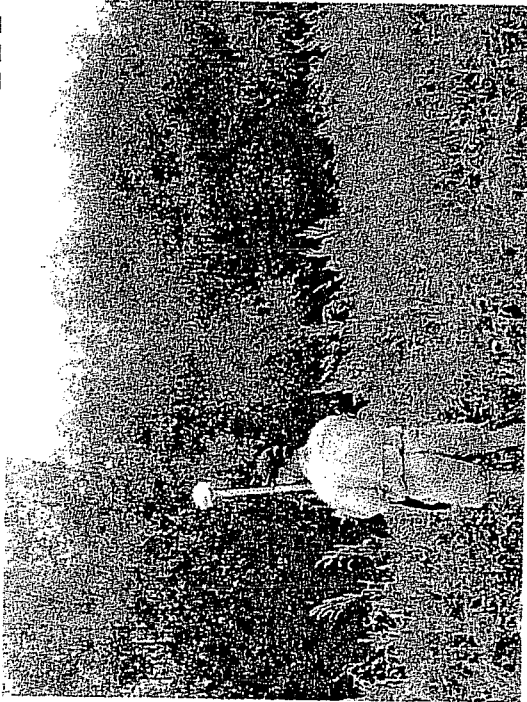


Photo 1657



Photo 1659

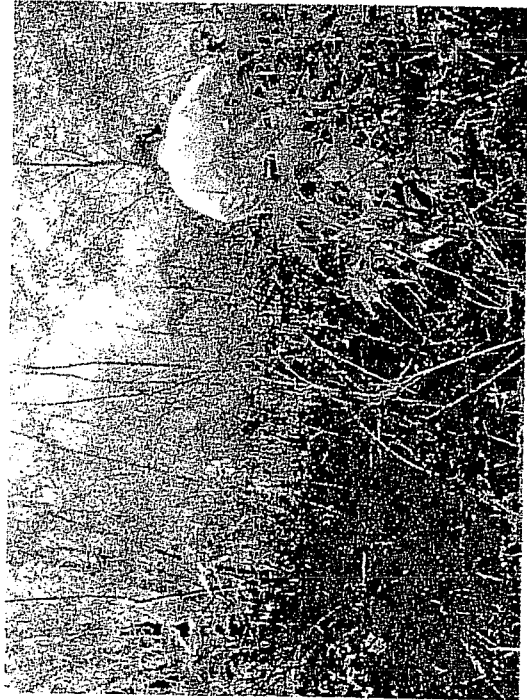


Photo 1663

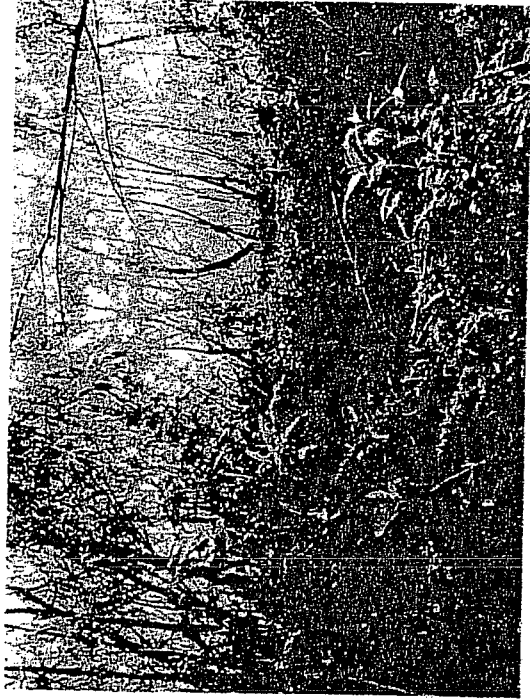


Photo 1664

**B-06**

Benchmark Ecological Services, Inc

Equilon 2Rivers Project

# Box-elder Wetlands



Photo 1725



Photo 1745



Photo 1781



Photo 1782

B-07

Benchmark Ecological Services, Inc

Equilon 2Rivers Project

# Box-elder/Maple Wetlands



Photo 1783

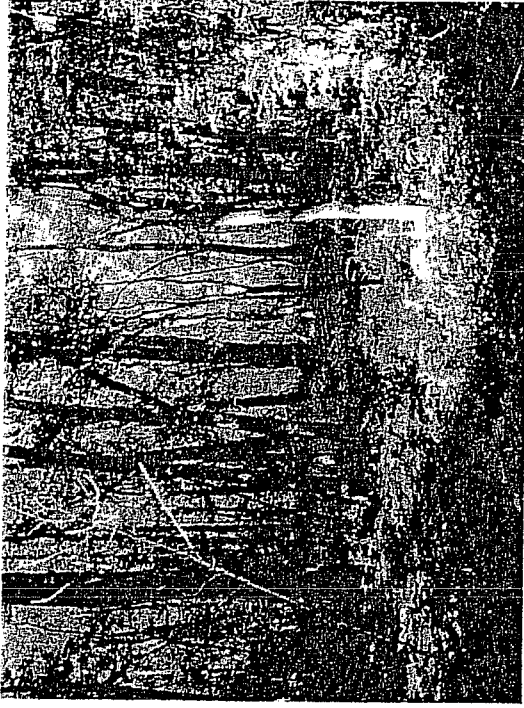


Photo 1785



Photo 1787



Photo 1788

# Silver Maple Wetlands

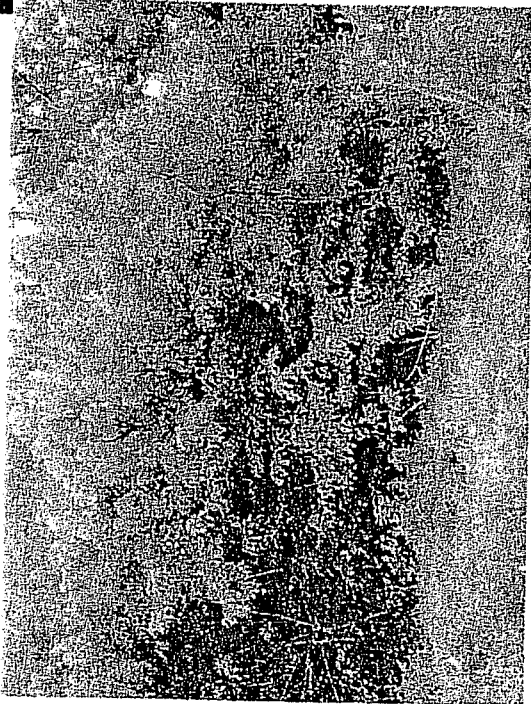


Photo 1691

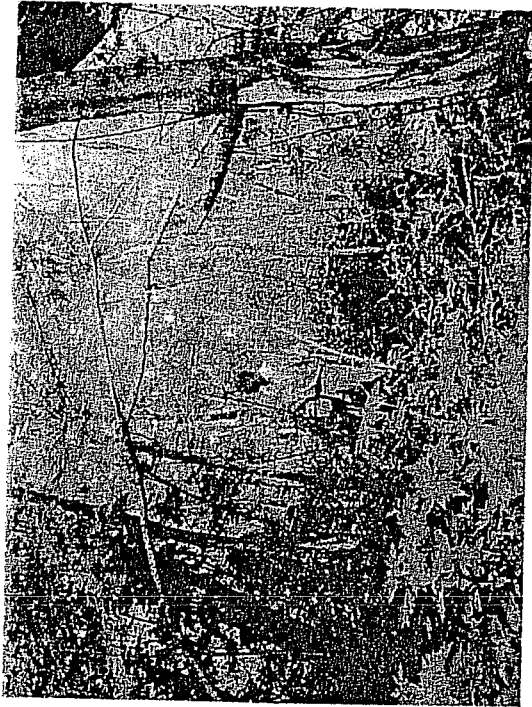


Photo 1692



Photo 1694



Photo 1697

**B-09**

**Benchmark Ecological Services, Inc**

**Equilon 2Rivers Project**

# Cottonwood Wetland



Photo 1741



Photo 1742

# Willow/Cottonwood Wetland

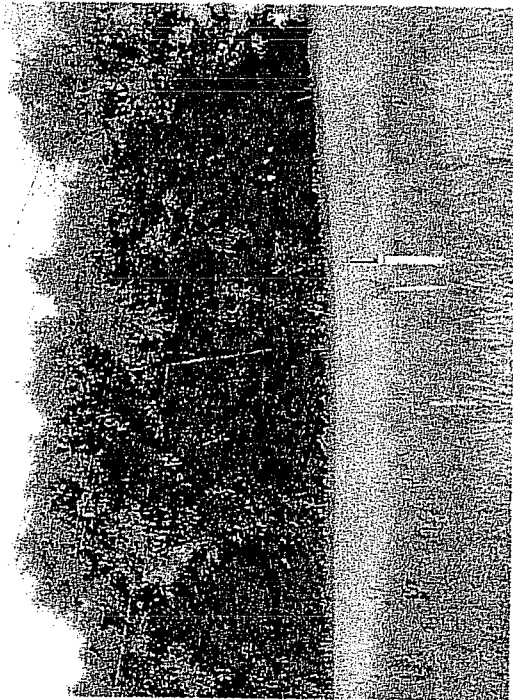


Photo 1801

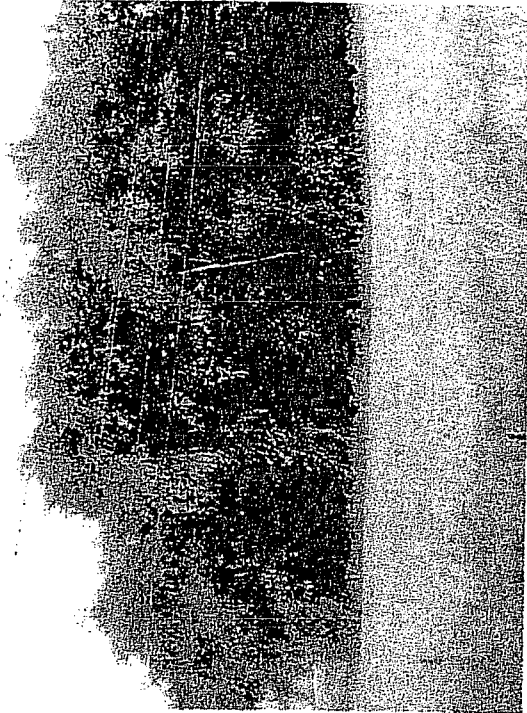
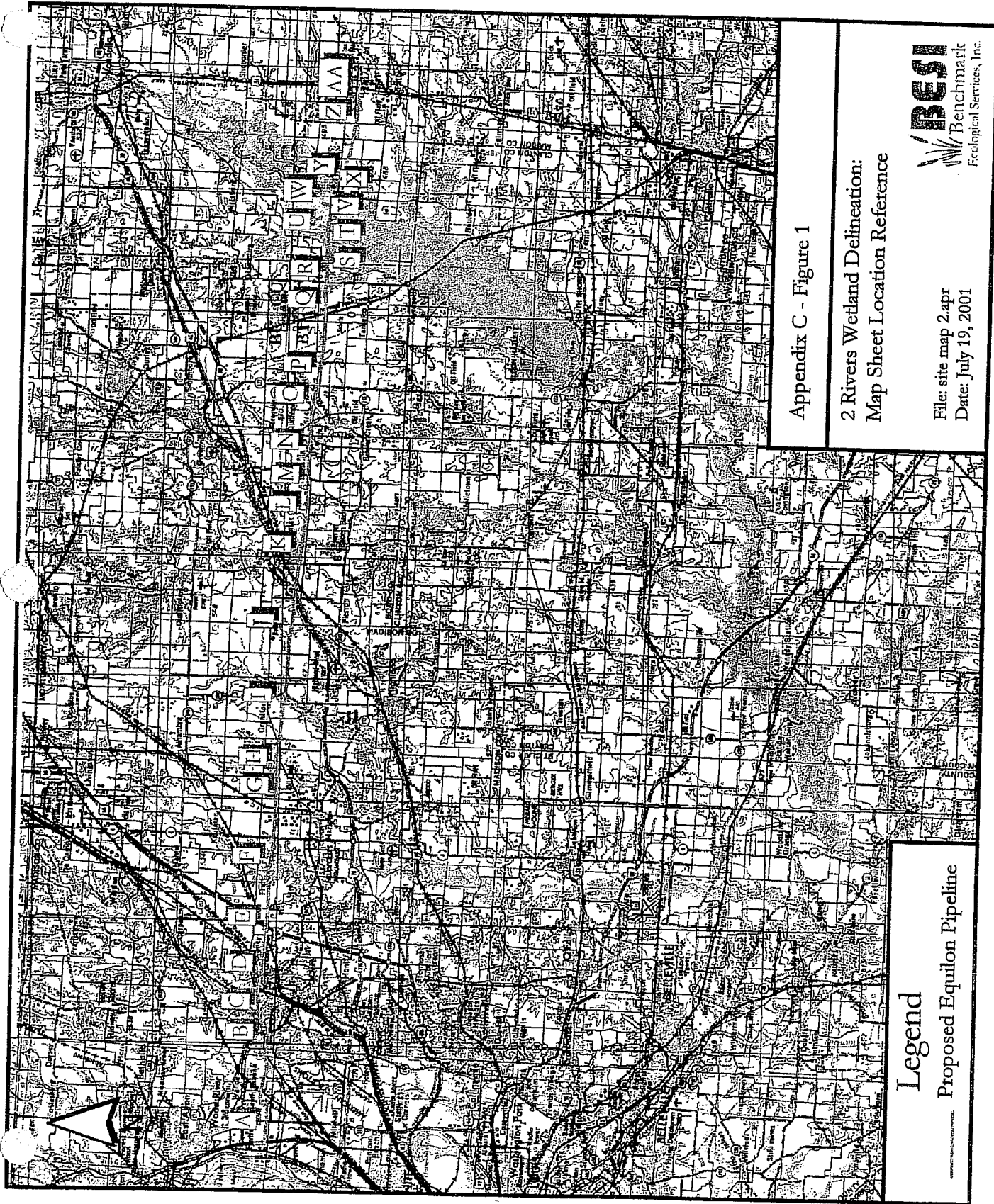


Photo 1802

## **Appendix C**

### **2Rivers Pipeline Wetland and Stream Crossing Location Maps**



Appendix C - Figure 1

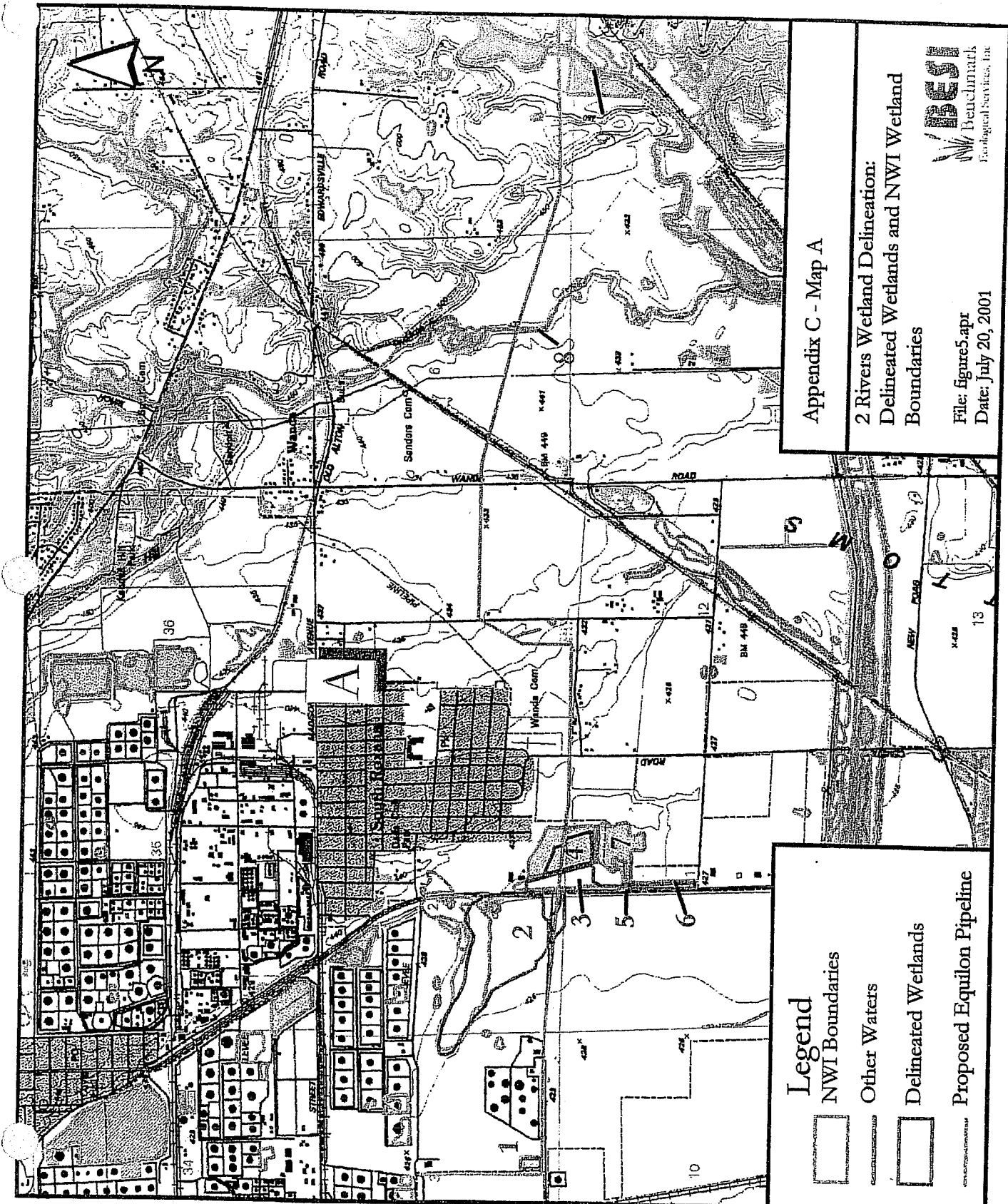
2 Rivers Wetland Delineation:  
Map Sheet Location Reference

File: site map 2.apr  
Date: July 19, 2001

**Legend**  
----- Proposed Equilon Pipeline







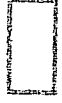


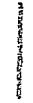
Appendix C - Map A

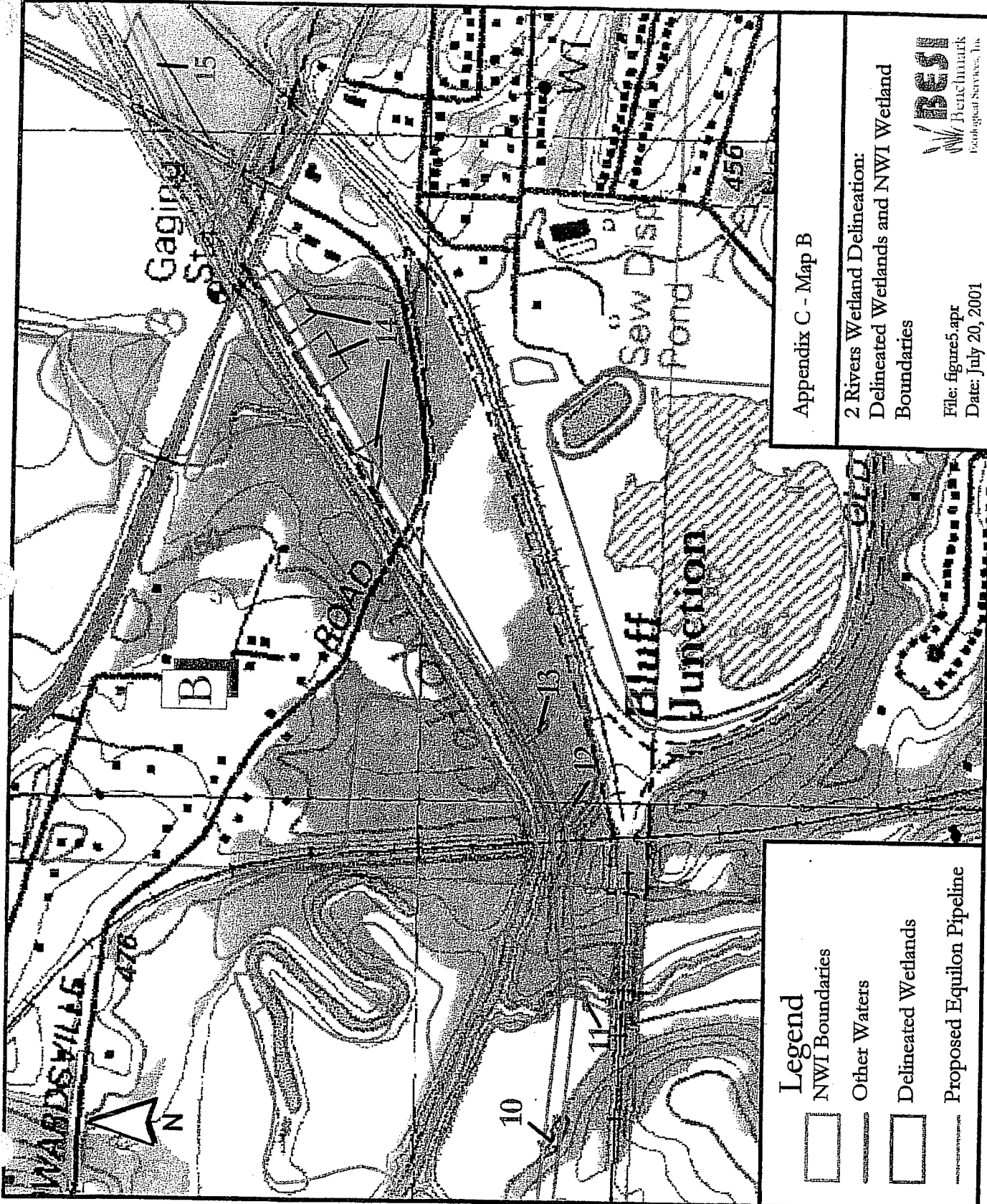
2 Rivers Wetland Delineation:  
 Delineated Wetlands and NWI Wetland  
 Boundaries

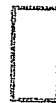


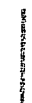
File: figure5.apr  
 Date: July 20, 2001



**Legend**

-  NWI Boundaries
-  Other Waters
-  Delineated Wetlands
-  Proposed Equilon Pipeline



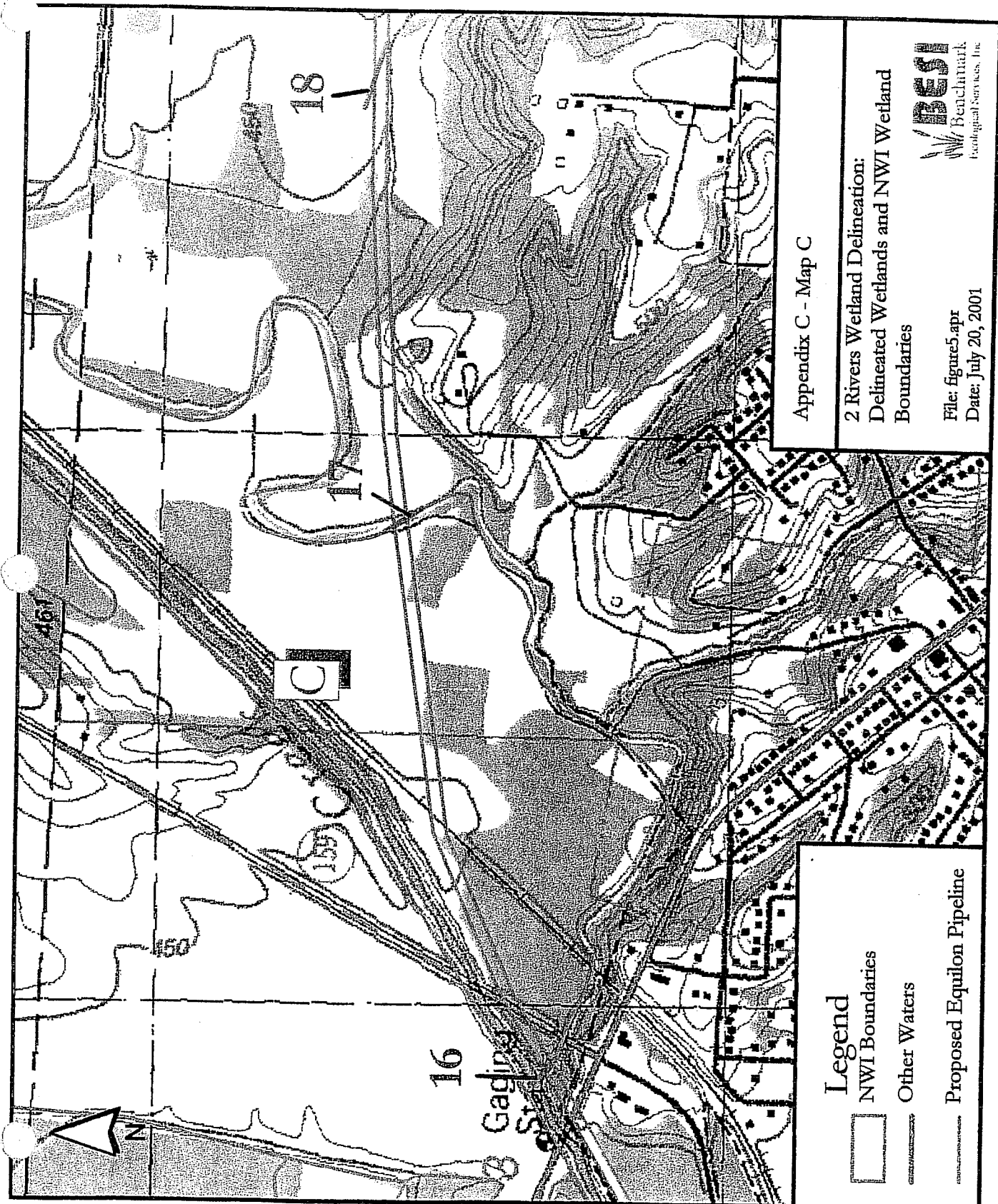
- Legend**
-  NWI Boundaries
  -  Other Waters
  -  Delineated Wetlands
  -  Proposed Equilon Pipeline

Appendix C - Map B

2 Rivers Wetland Delineation:  
 Delineated Wetlands and NWI Wetland  
 Boundaries

File: figures.apr  
 Date: July 20, 2001

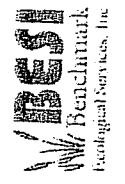




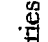

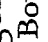
Appendix C - Map C

2 Rivers Wetland Delineation:  
 Delineated Wetlands and NWI Wetland  
 Boundaries

File: figure5.apr  
 Date: July 20, 2001



**Legend**

-  NWI Boundaries
-  Other Waters
-  Proposed Equilon Pipeline

16

Gaging  
 St

18

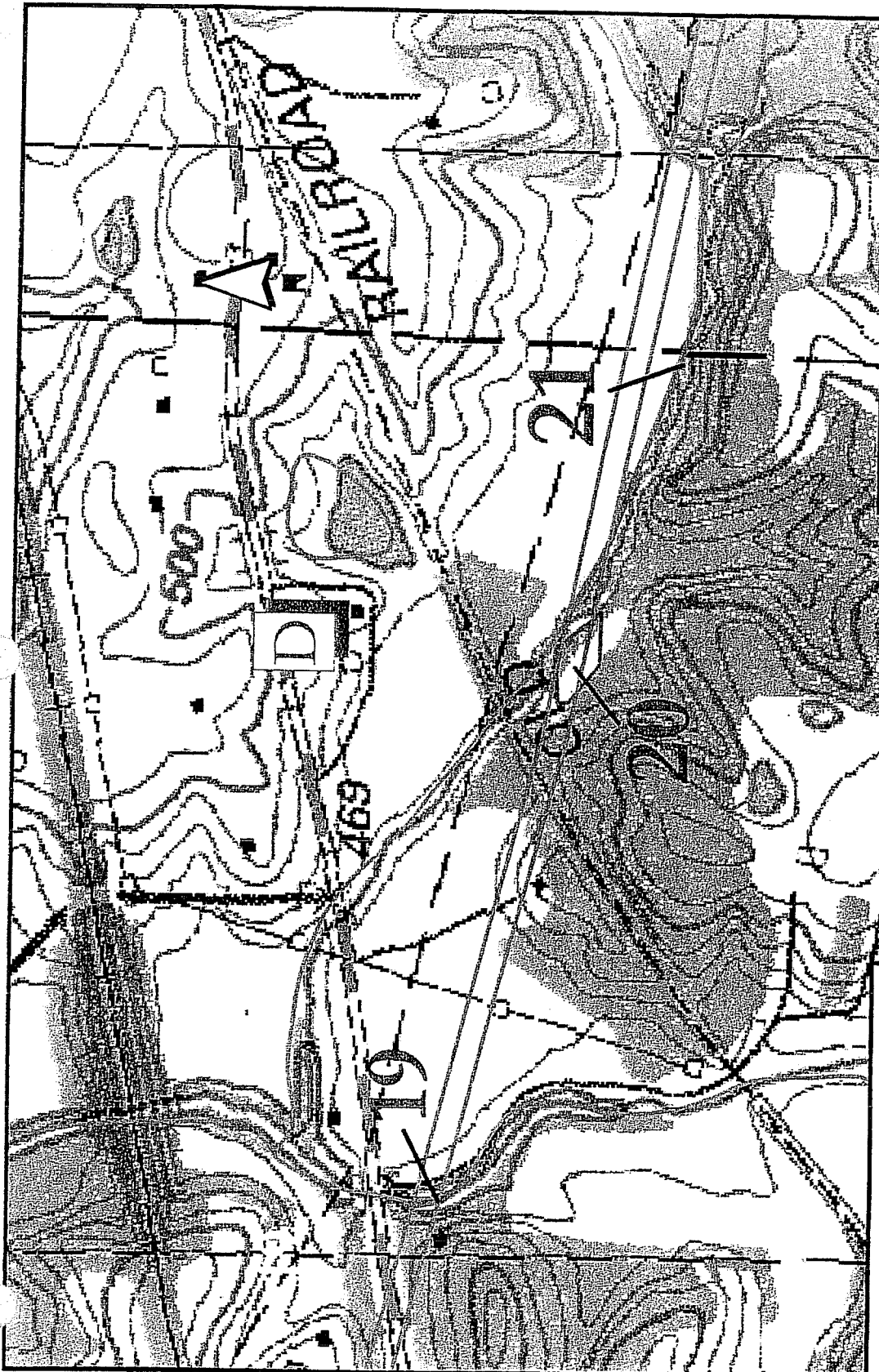
C

C

467

450


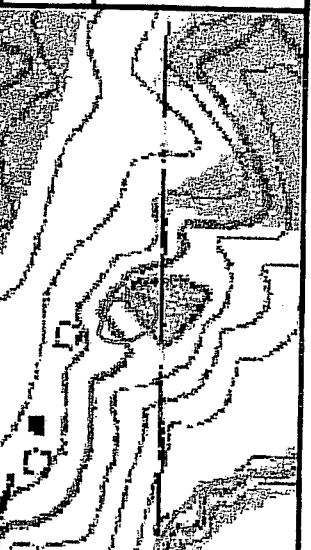







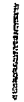
Appendix C - Map D

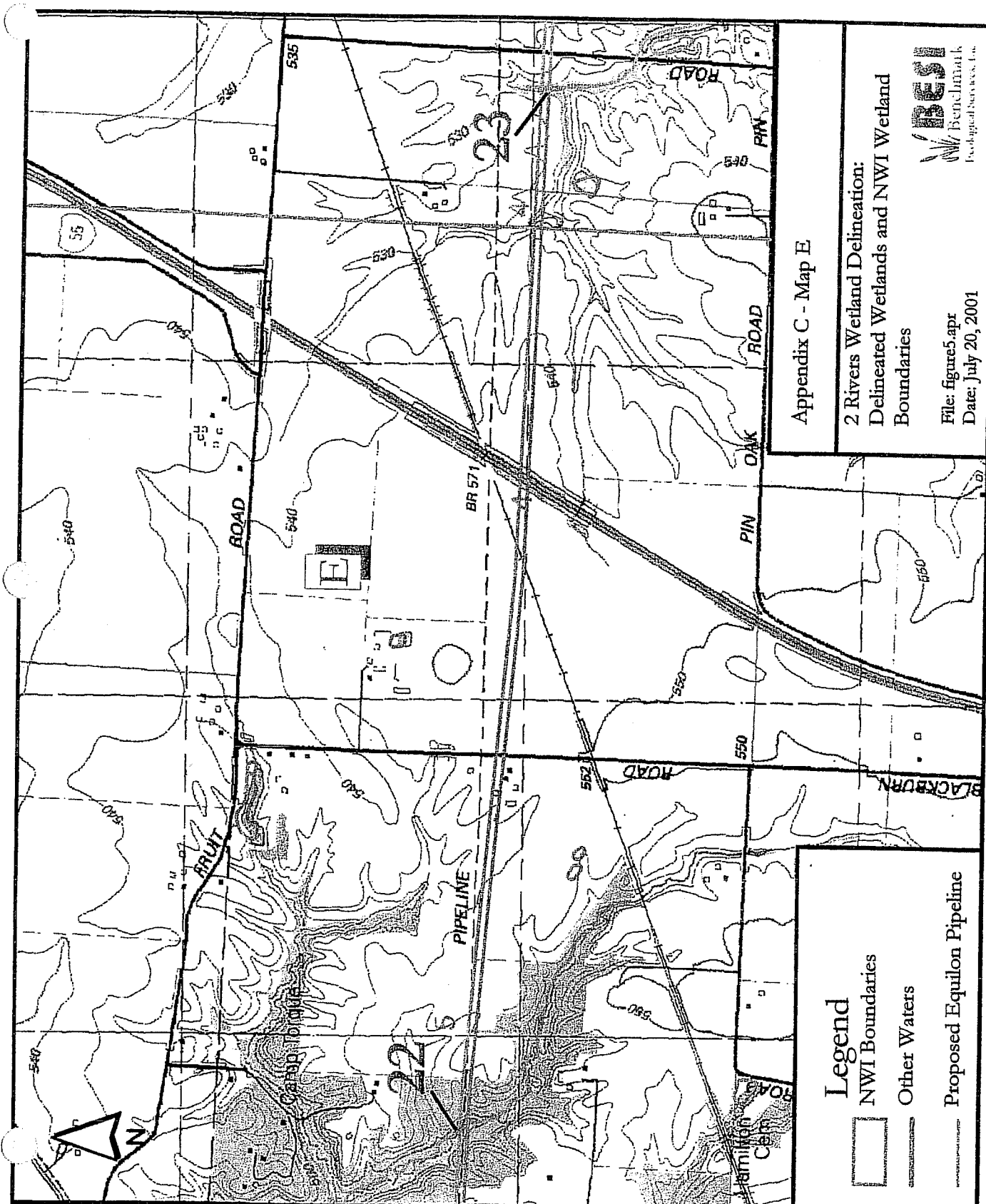
2 Rivers Wetland Delineation:  
Delineated Wetlands and NWI Wetland  
Boundaries

File: figure5.apr  
Date: July 20, 2001

**Legend**

-  NWI Boundaries
-  Other Waters
-  Delineated Wetlands
-  Proposed Equilon Pipeline



Appendix C - Map E

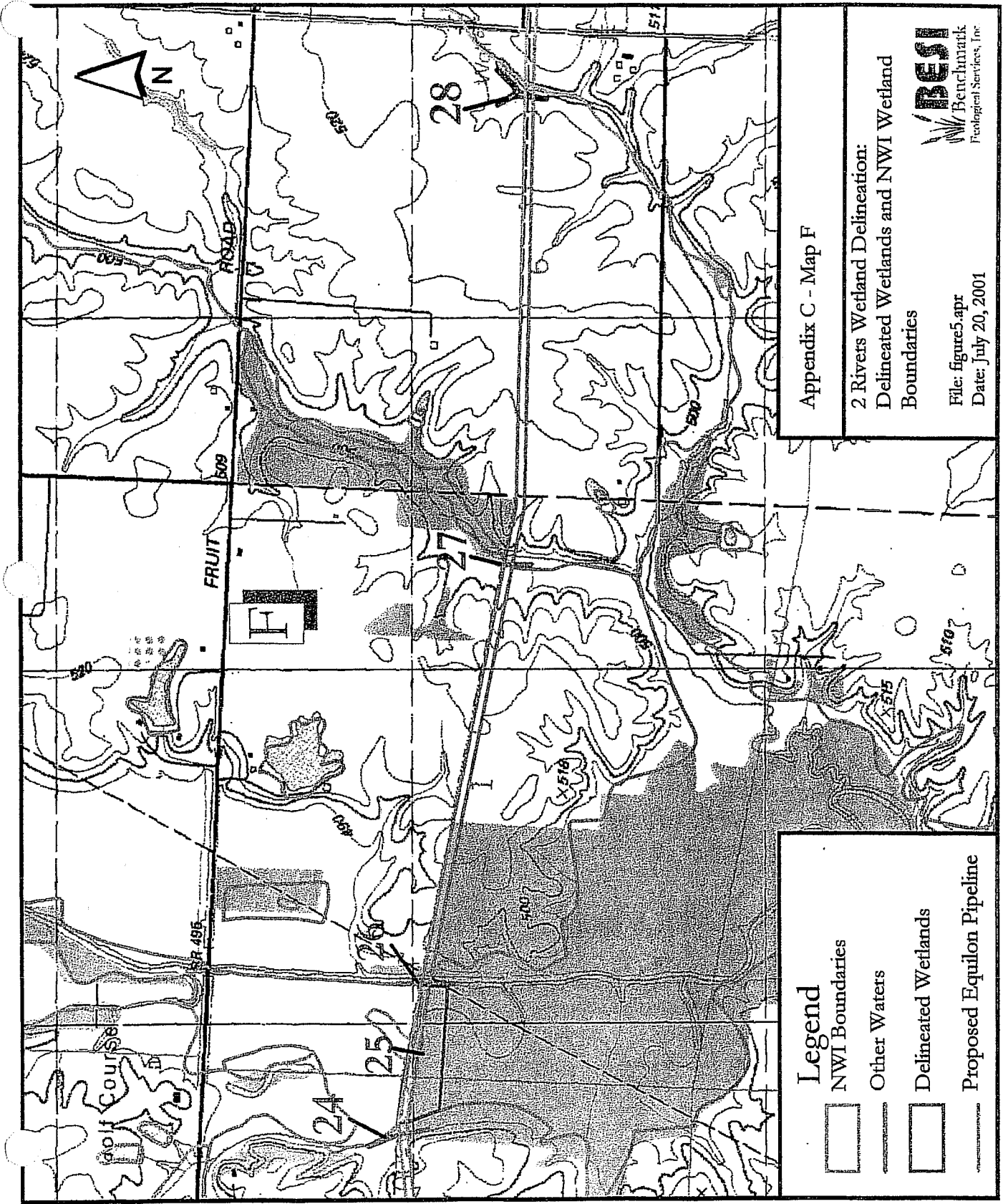
2 Rivers Wetland Delineation:  
 Delineated Wetlands and NWI Wetland  
 Boundaries

File: figures.apr  
 Date: July 20, 2001

**BESI**  
 Benchmark  
 Ecological Services, Inc.

**Legend**

- NWI Boundaries
- Other Waters
- Proposed Equilon Pipeline



Appendix C - Map F

2 Rivers Wetland Delineation:  
Delineated Wetlands and NWI Wetland  
Boundaries

File: figure5.apr  
Date: July 20, 2001



- Legend**
- NWI Boundaries
  - Other Waters
  - Delineated Wetlands
  - Proposed Equilon Pipeline