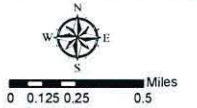


BSSE Overview



Pesall Re-Route (120-56-17-D&P)



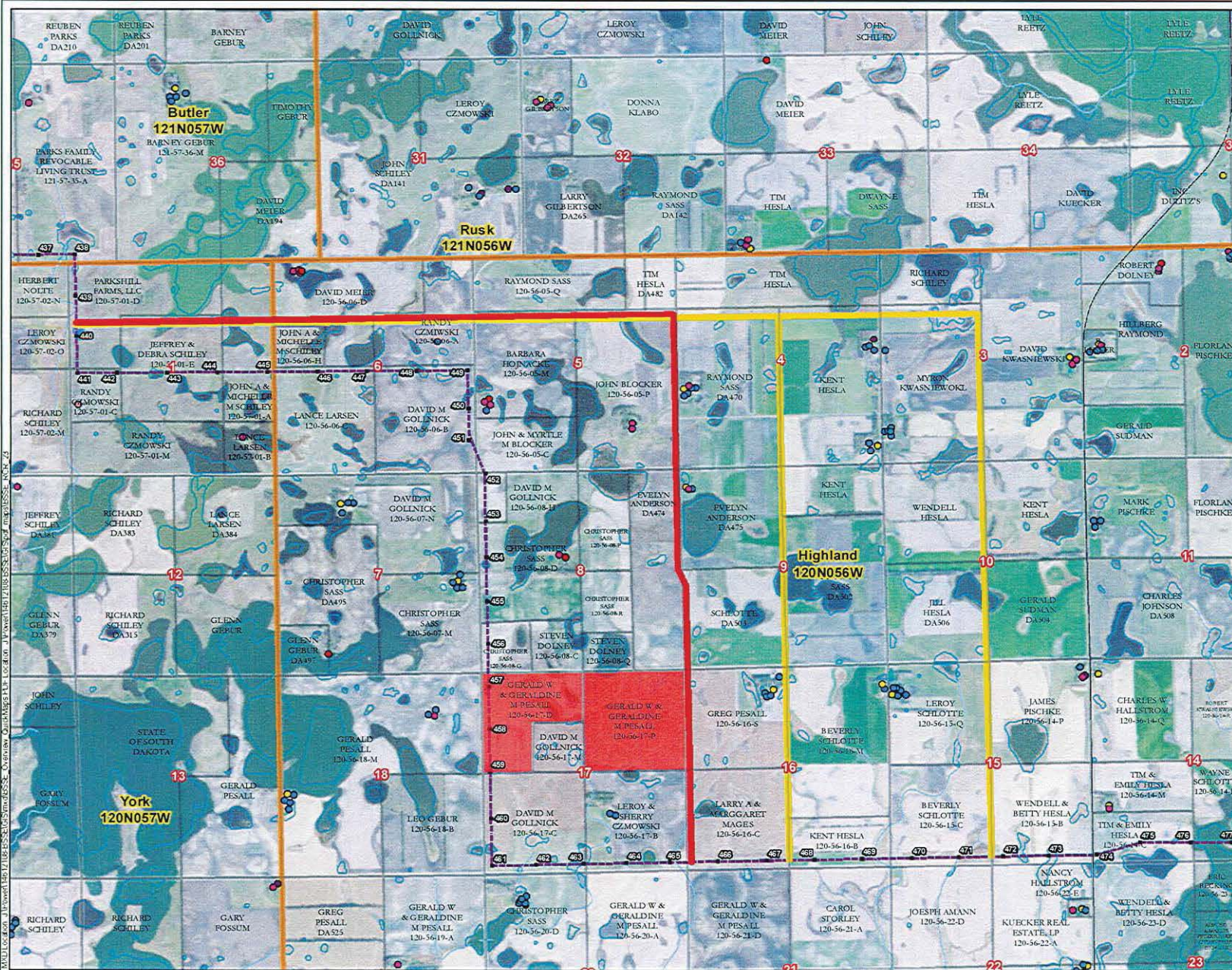
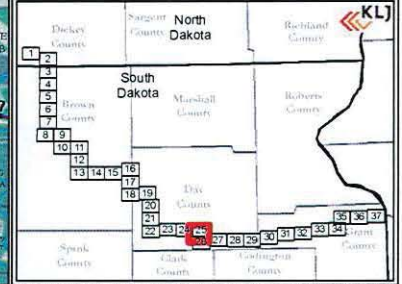
Legend

- Land Owner Request
- KLI Pesall Re-Route
- Buildings / Homes**
 - Occupancy Not Verified
 - Dwelling - Unknown
 - Dwelling - Vacant
 - Dwelling - Occupied
 - Gravel/Mining
 - Rec - Park
 - Struct - Ag Ops / Farming
 - Struct - Business
 - Struct - Church
 - Struct - Cemetery
 - Struct - Other
 - Struct - School
 - Utility - Other
- Preliminary Structures
- BSSE Route
- Townships
- Counties
- Sections
- Railroads**
 - Railroad
 - - - Abandoned Railroad
- Utilities**
 - Electric
 - Oil/Gas
- BSSE Parcels**
 - 120-56-17-D
 - 120-56-17-P
- Parcels
- PARCEL_ID
- NWI Wetlands

PRELIMINARY DRAFT LOCATIONS

This map was produced by the KLI GIS Division utilizing ESRI ArcMap 10.1 on Windows Professional workstation. KLI has completed this map according to conventional cartographic standards, using what is thought to be the most reliable information available. KLI does not guarantee freedom from errors or omissions and disclaims any legal responsibility or liability for interpretations made from the map or decisions based thereon.

Inset Map Date: 12/9/2013



Data Sources: KLI, HDR, NDC/SHUB, SDGIS Coordinate System: NAD 1983 UTM Zone 14N, Foot: US