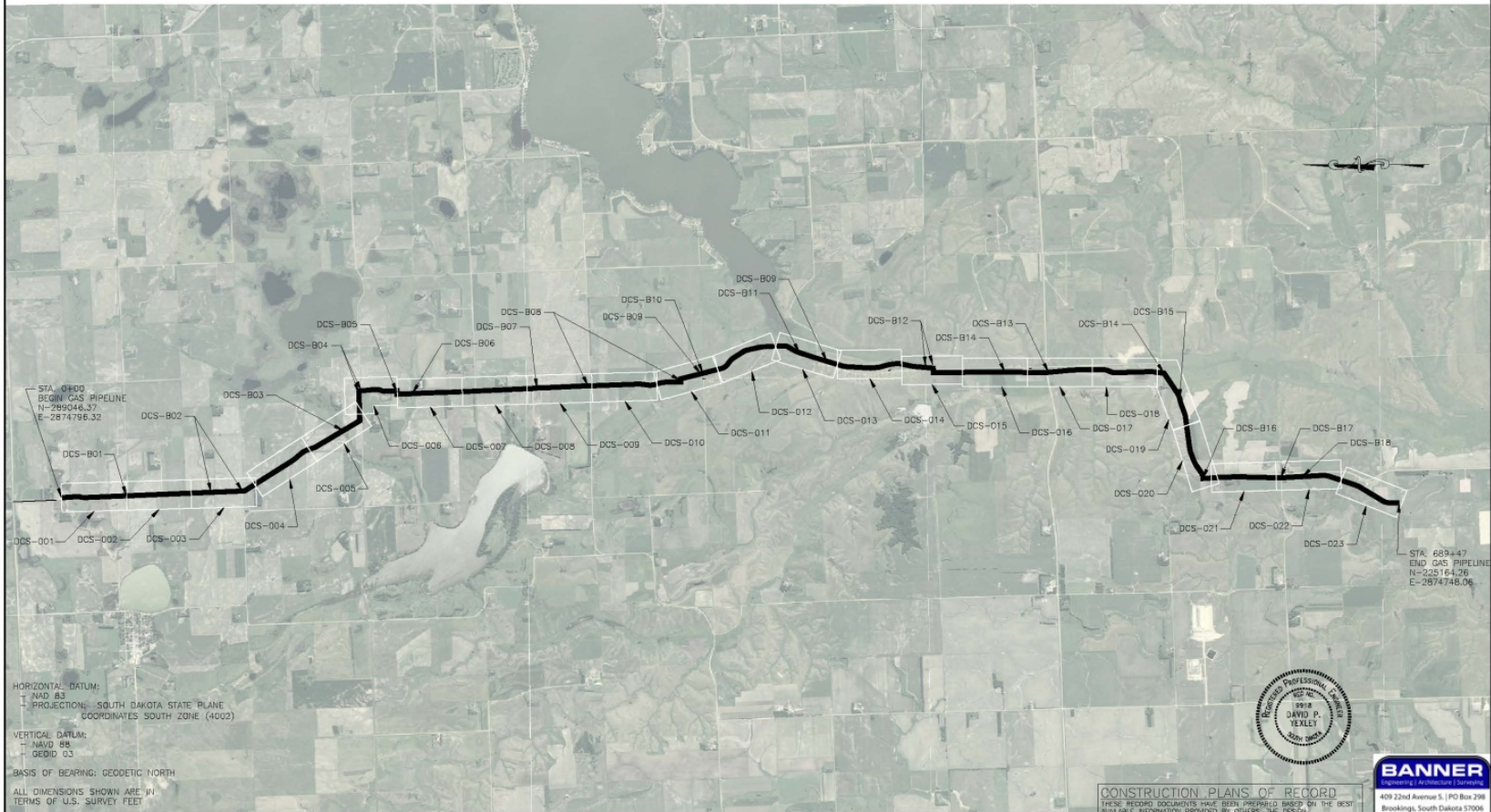


Where's Everyone Digging:
Pipeline Activity in the Upper
Great Plains
Douglas M. Lee – Presenter

DRAWING INDEX



NO.	DATE	REVISIONS

**BASIN ELECTRIC
POWER COOPERATIVE**
A Touchstone Energy® Cooperative

**MONTANA-DAKOTA
UTILITIES CO.**
A Division of MDU Resources Group, Inc.

DEER CREEK STATION GAS PIPELINE
DEVEL. & BROOKINGS COUNTY, SOUTH DAKOTA

ORIGINAL	DATE	SCALE	NO.
APPROVED BY:	DATE:	ENGINEER:	
DRAWING INDEX			
DCS-101			

Deer Creek Station Pipeline



Coating Joints



Jeeping the Pipe



Lowering In



Safety Meeting



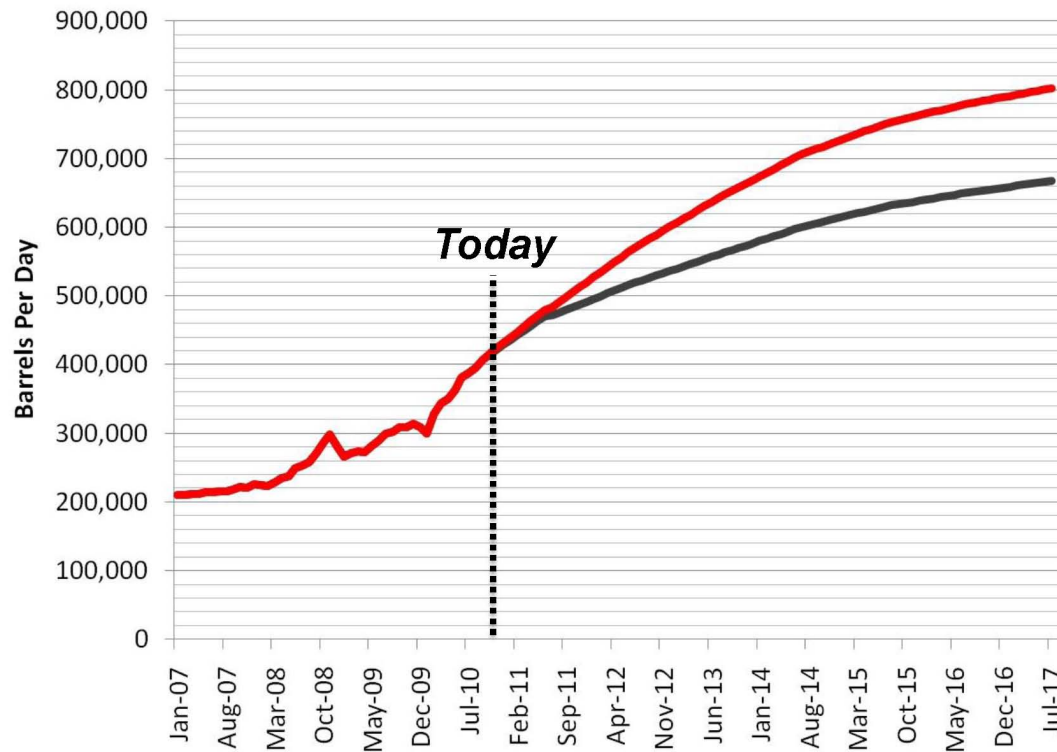
Cleaning up drilling mud



Completed Installation



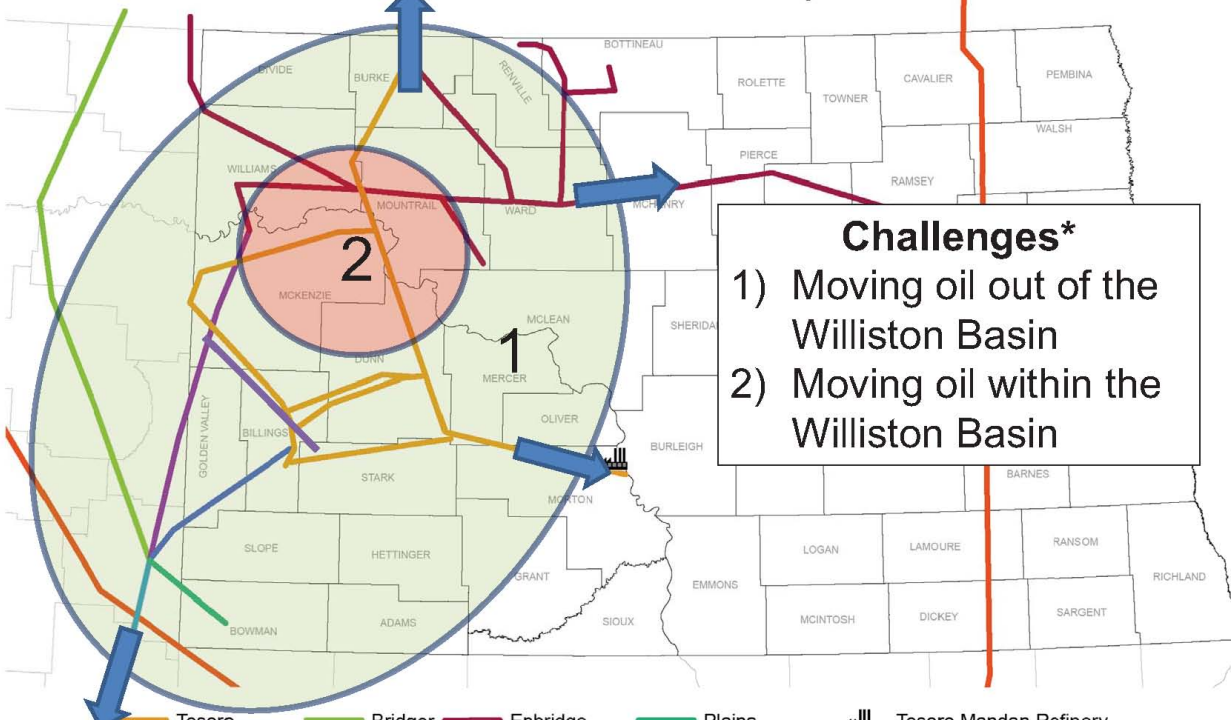
Forecasting Williston Basin Oil Production, BOPD



Production forecast is for visual demonstration purposes only and should not be considered accurate for any near or long term planning.



North Dakota Crude Oil Pipelines



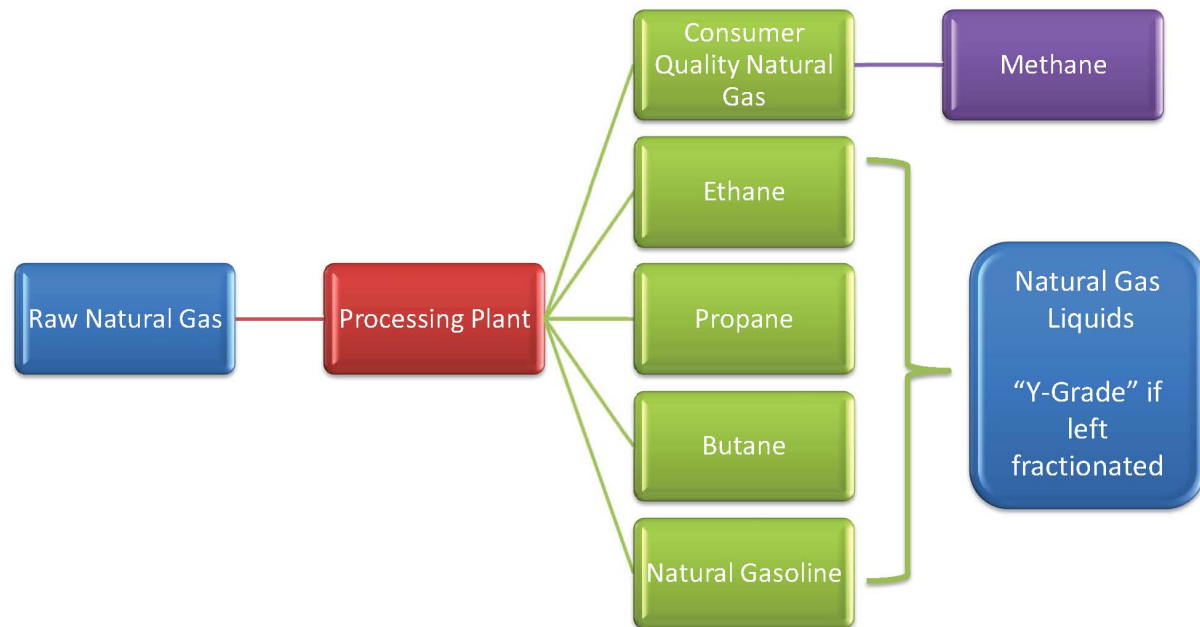
Challenges*

- 1) Moving oil out of the Williston Basin
- 2) Moving oil within the Williston Basin

- Tesoro
- Bridger
- Enbridge
- Plains
- Tesoro Mandan Refinery
- Belle Fourche
- Butte
- Little Missouri
- TransCanada

*Modified from Bridger and Belle Fourche Pipelines

Natural Gas Processing With Ethane Extraction



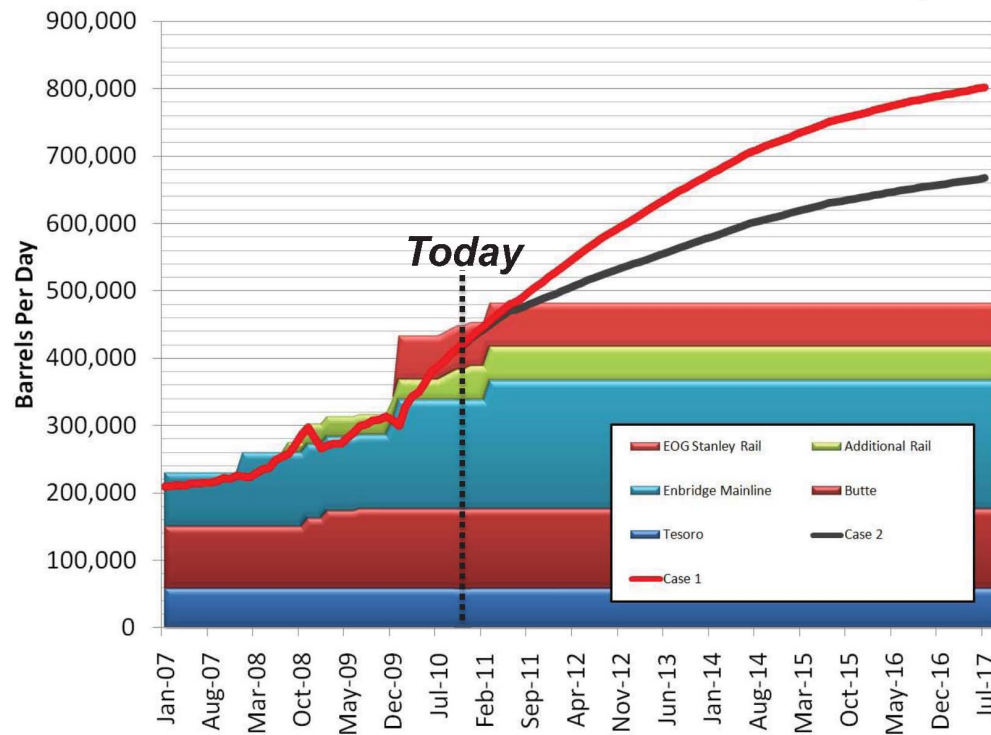
Proposed TransCanada Marketlink

- Binding Open Season Complete
- Q1 2013 Proposed Startup



Image: TransCanada Notice of Open Season

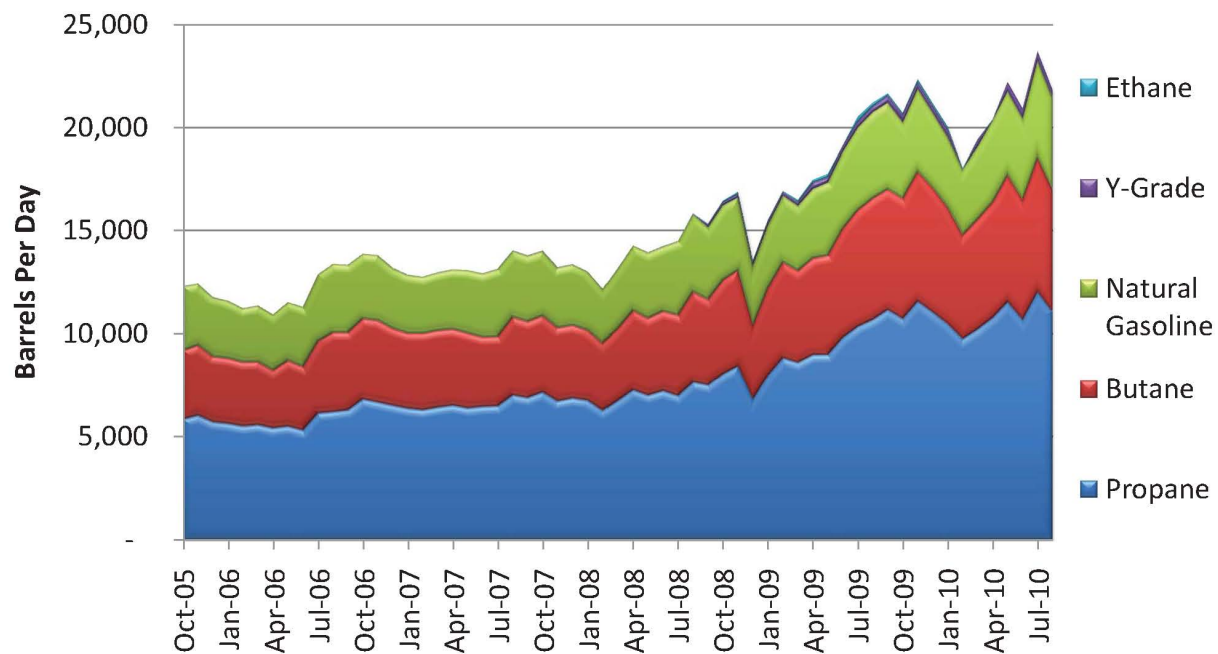
Williston Basin Oil Production & Export Capacity, BOPD



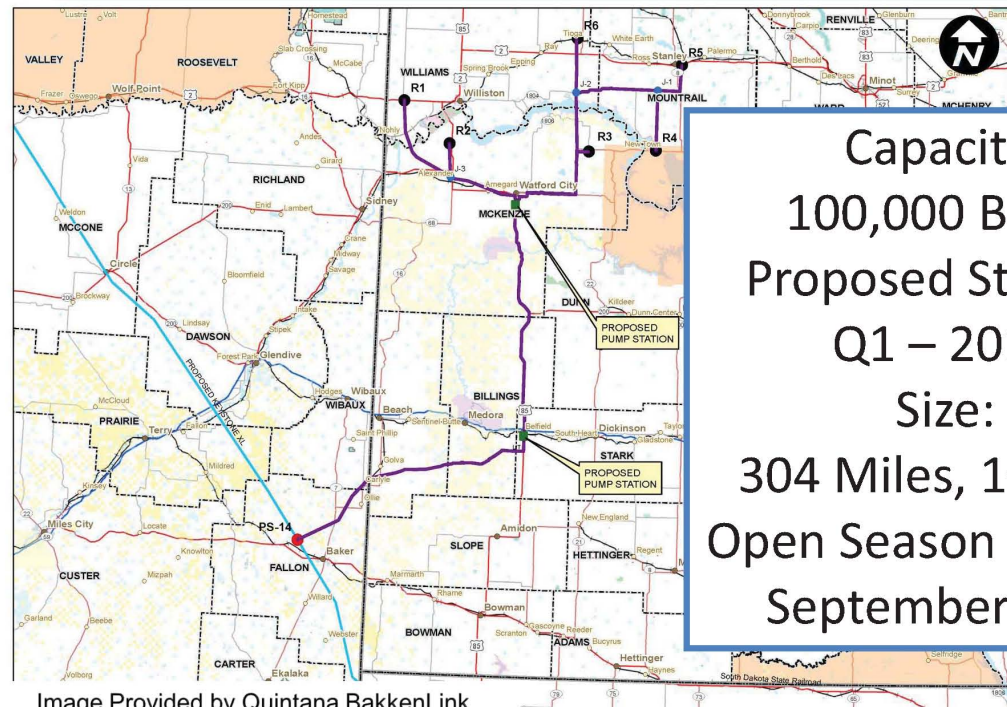
Production forecast is for visual demonstration purposes only and should not be considered accurate for any near or long term planning.



North Dakota Natural Gas Liquids



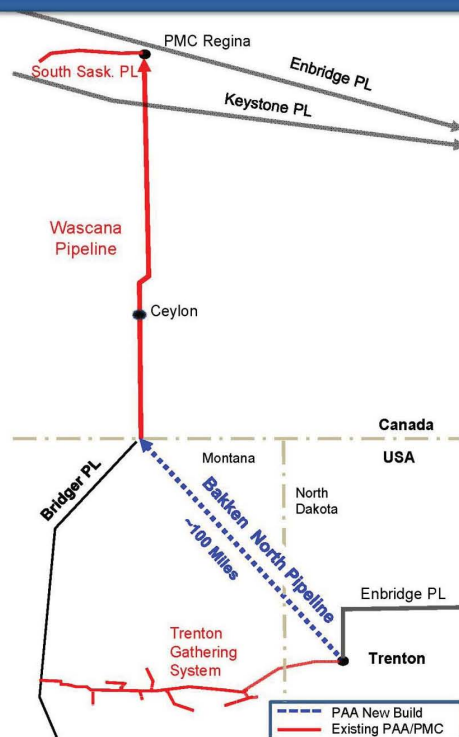
Proposed Quintana BakkenLink



Capacity:
100,000 BOPD
Proposed Startup:
Q1 – 2013
Size:
304 Miles, 10"-16"
Open Season Started:
September 27th

Image Provided by Quintana BakkenLink

Plains Bakken North Pipeline

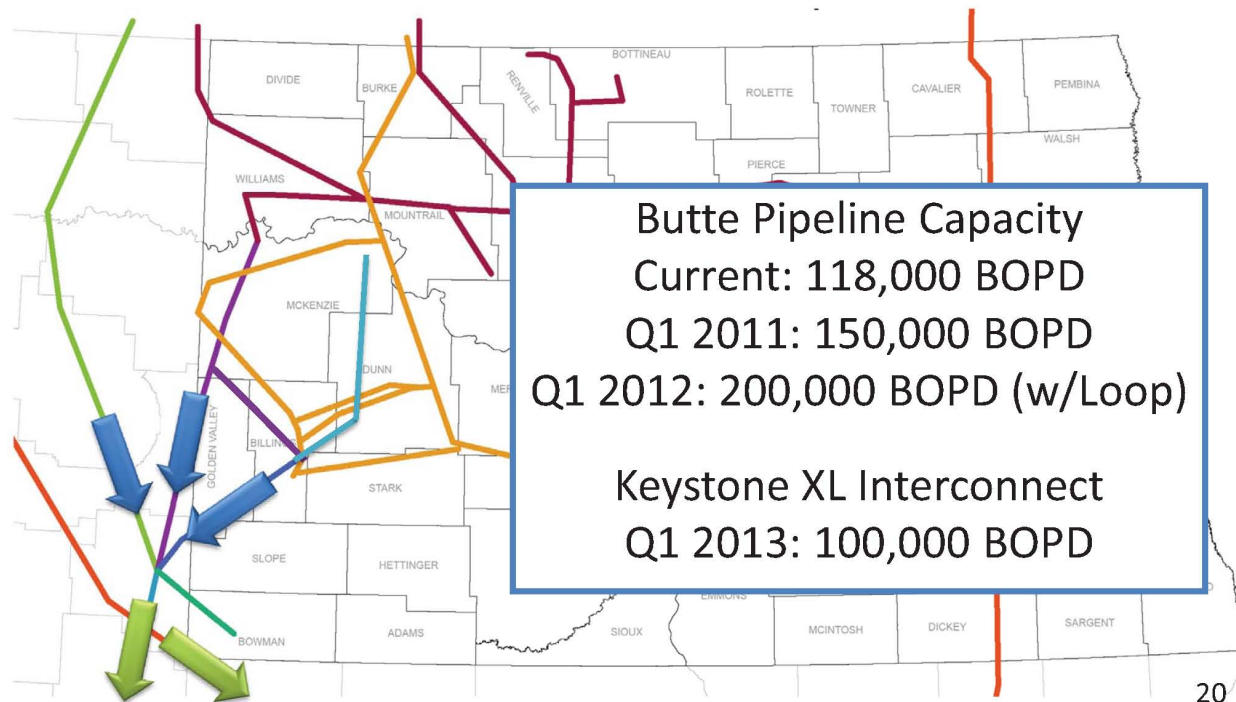


Proposed Capacity
50,000-75,000 BOPD
Q4 2012

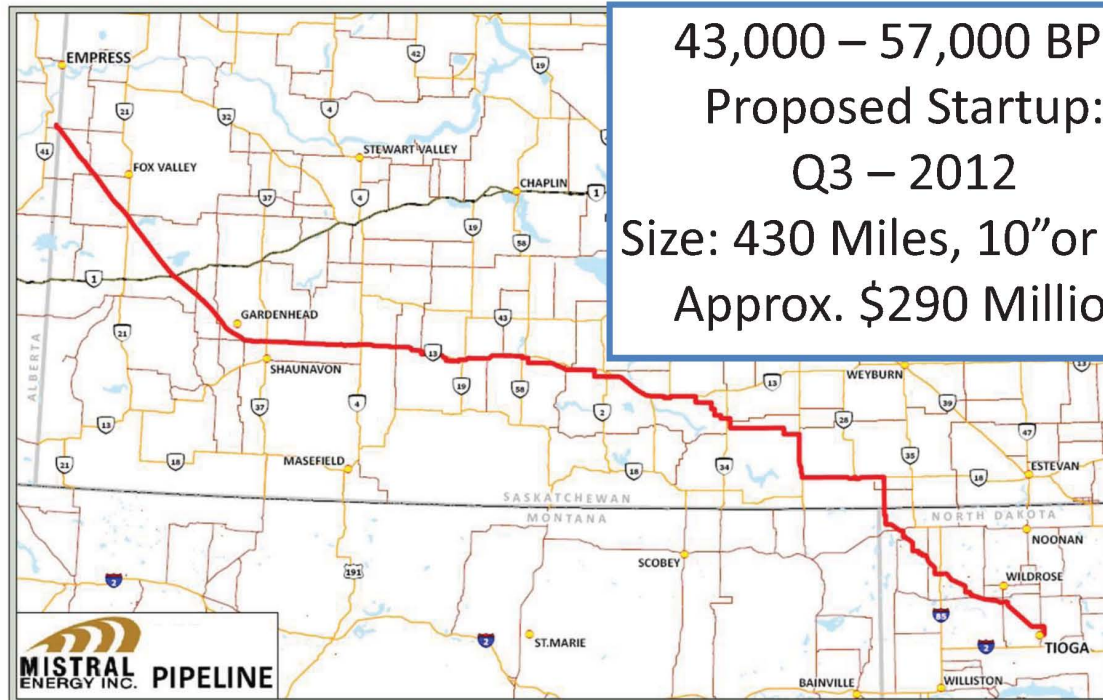
New 103 Miles, 12" Pipeline
Reverse Wascana Pipeline

\$160-\$200 Million

True Co.'s Proposed "Baker 300"

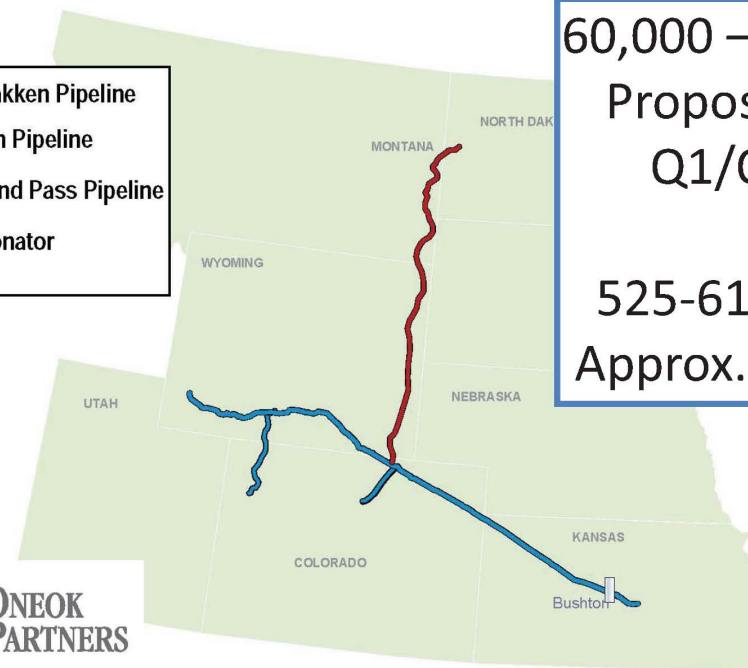
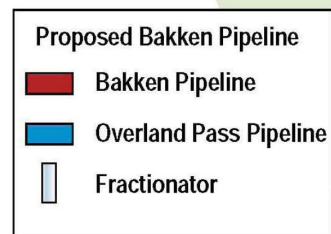


Vantage Pipeline: Ethane



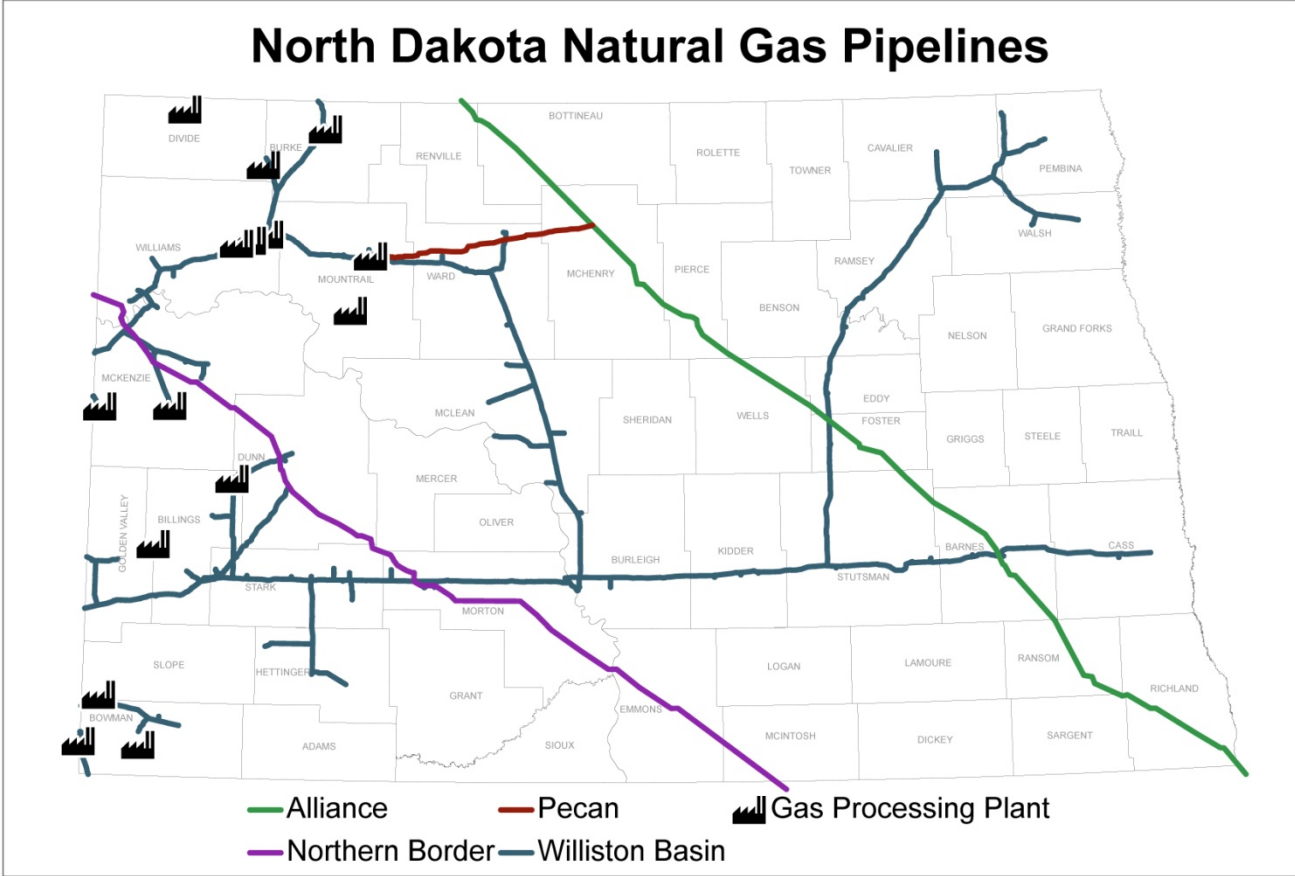
43,000 – 57,000 BPD
Proposed Startup:
Q3 – 2012
Size: 430 Miles, 10" or 12"
Approx. \$290 Million

ONEOK Bakken Pipeline: Y-Grade

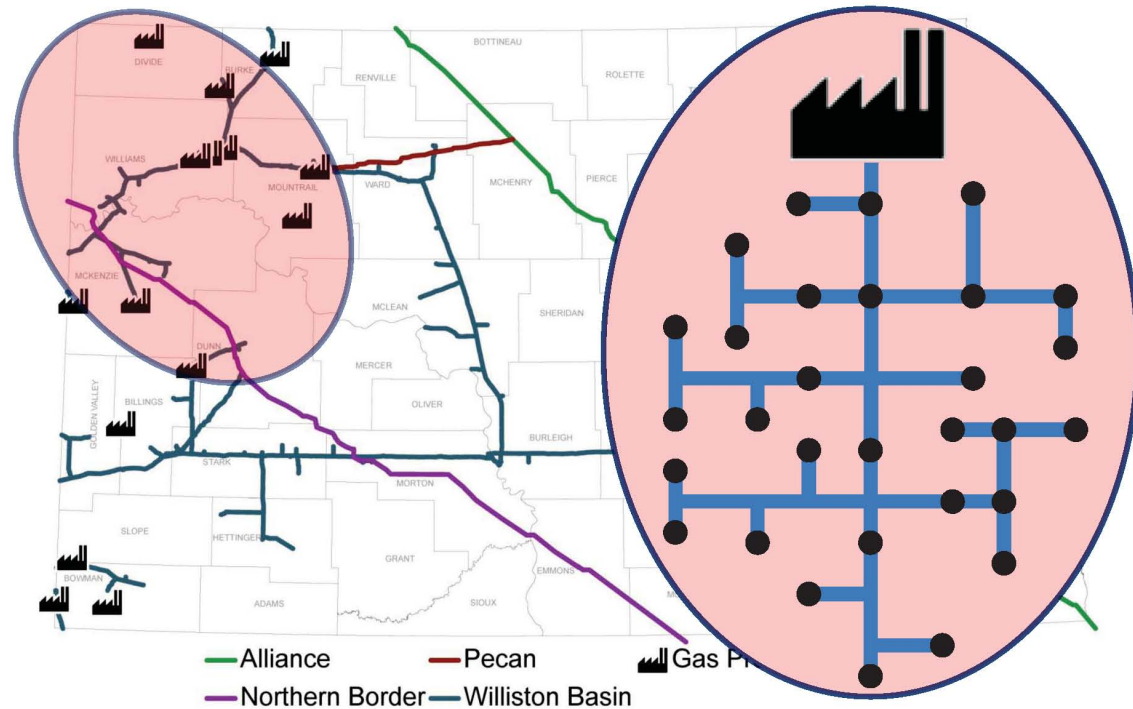


60,000 – 110,000 BPD
Proposed Startup:
Q1/Q2 – 2013
Size:
525-615 Miles, 12"
Approx. \$700 Million

North Dakota Natural Gas Pipelines



Natural Gas Challenges



- Diverse network of professionals
- Strategy-oriented problem solvers
- High standard of quality
- Innovative
- Relationship based