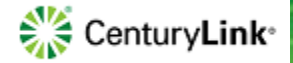


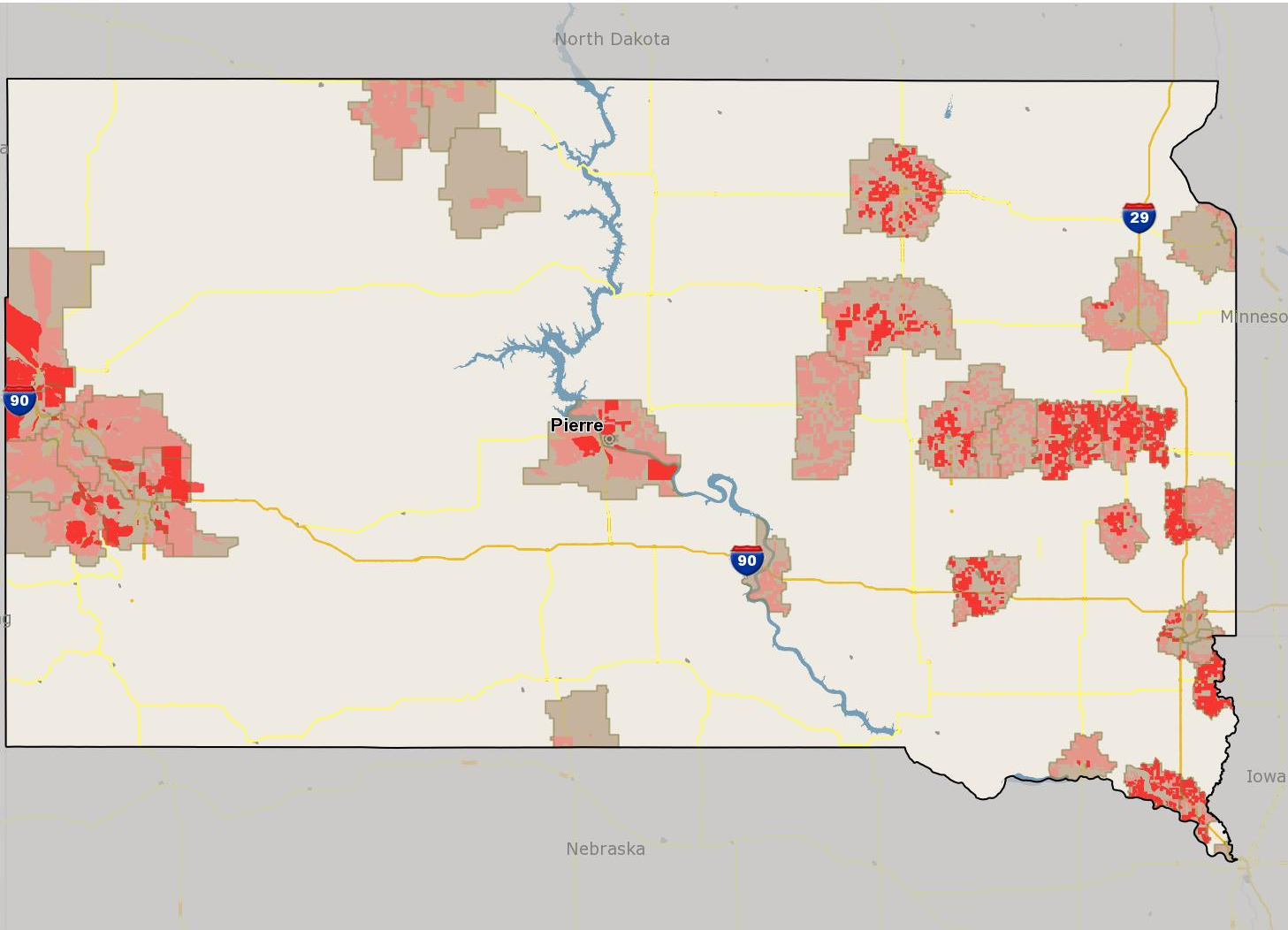
South Dakota

2017 CAF 2 Enabled & Eligible Areas



Attachment 1-4A

- CAF 2 Enabled CB
- CAF 2 Eligible CB
- CenturyLink Wire Center



Program Target

15,071

Enabled Locations

6,009 (39.9%)

CAF Enabled CBs are census blocks containing at least 1 location that qualifies for 10/1 as of end-of-year 2017. Not all locations in the census block may qualify for broadband or the 10/1 speed. CAF Eligible CBs are census blocks without at least 1 location qualifying for 10/1 as of end-of-year 2017. Under the CAF program CenturyLink has the flexibility to deploy to CAF 2 eligible census blocks identified by the FCC. The identification of an area as CAF 2 eligible does not indicate a commitment to deploy high speed internet to the area. For verification of unique addresses or locations, contact your local CenturyLink representative.