

Reasons Why LTE makes sense for Fixed

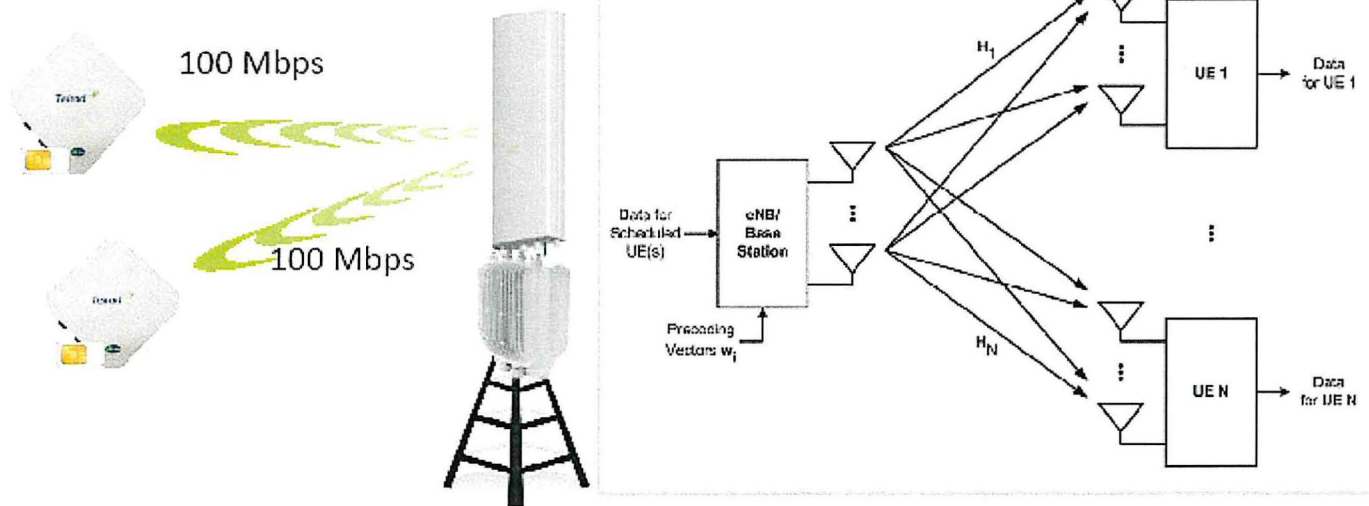
Business Generation

- ▶ Cost-effective **NLOS** – more share per tower (reduces cost/sub)
- ▶ Scalability
- ▶ Enables the ability to offer SLAs
- ▶ Exit strategy value

Business Protection (Managed Spectrum)

- ▶ Capacity Roadmap driven by Top Mobile Operators
- ▶ Lots of manufacturers - LTE is here to stay
- ▶ Carrier-Grade Reliability & Performance
- ▶ CPE options and manufacturers
- ▶ Available Talent Pool – information and engineers abound - number in the 000's

MU-MIMO



Highlights

Works with Any Telrad CPE

Optimized for fixed wireless

Improves spectral efficiency

Peak Rates by Technology

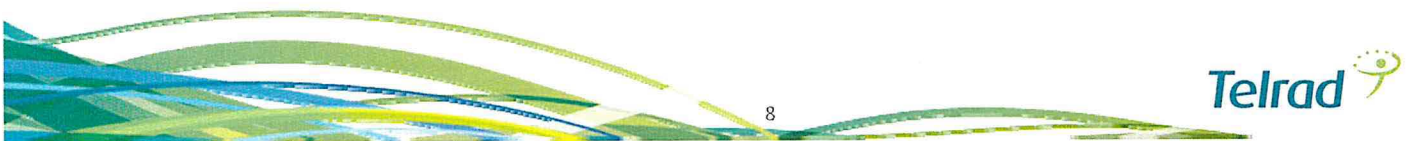
	WiMAX 16e	LTE Category 4/5	LTE-Advanced Category 6
Max channel Bandwidth	10MHz	20MHz	40MHz
Sector Peak Rate	40Mbps	100Mbps	200Mbps
User Peak Rate	12Mbps	80-90Mbps	200Mbps

Typical BWA operator owns 20-40MHz total spectrum



Capacity and oversubscription calculation with CPE8000 and CPE9000

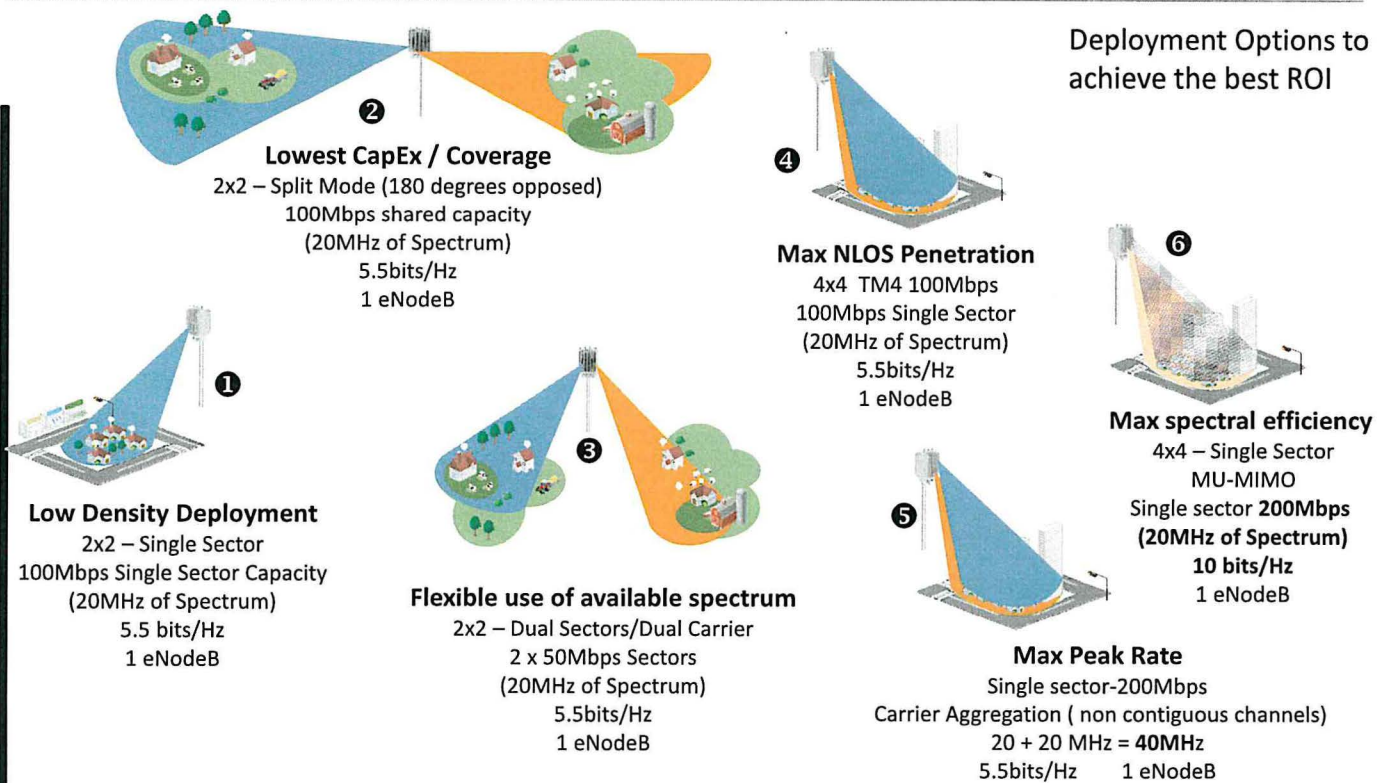
- Oversubscribed data to sell
 - ▶ 10:1 = 724.4Mbps DL / 97.4 Mbps UL
 - 25 users @ 10/1.5
 - 24 users @ 20/2.5
 - Total 49 users
 - 72 users @10/1
 - Total 70 Users
- With the Telrad solution these numbers can double in 2017 as we move to 10 bit/Hz. This can translate to double the throughput or double the users per carrier and this is possible with the same UE that is shipping today.



Telrad Business Model - Deployment Flexibility

1 Radio, Multiple Deployment Options

Deployment Options to achieve the best ROI



→ Increase Subscriber capacity or Performance →