

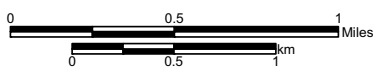
Legend

- Valve Site
- Milepost
- Centerline
- Pump Station - Permanent Disturbance
- Pump Station - Construction Disturbance

Keystone Pipeline Project

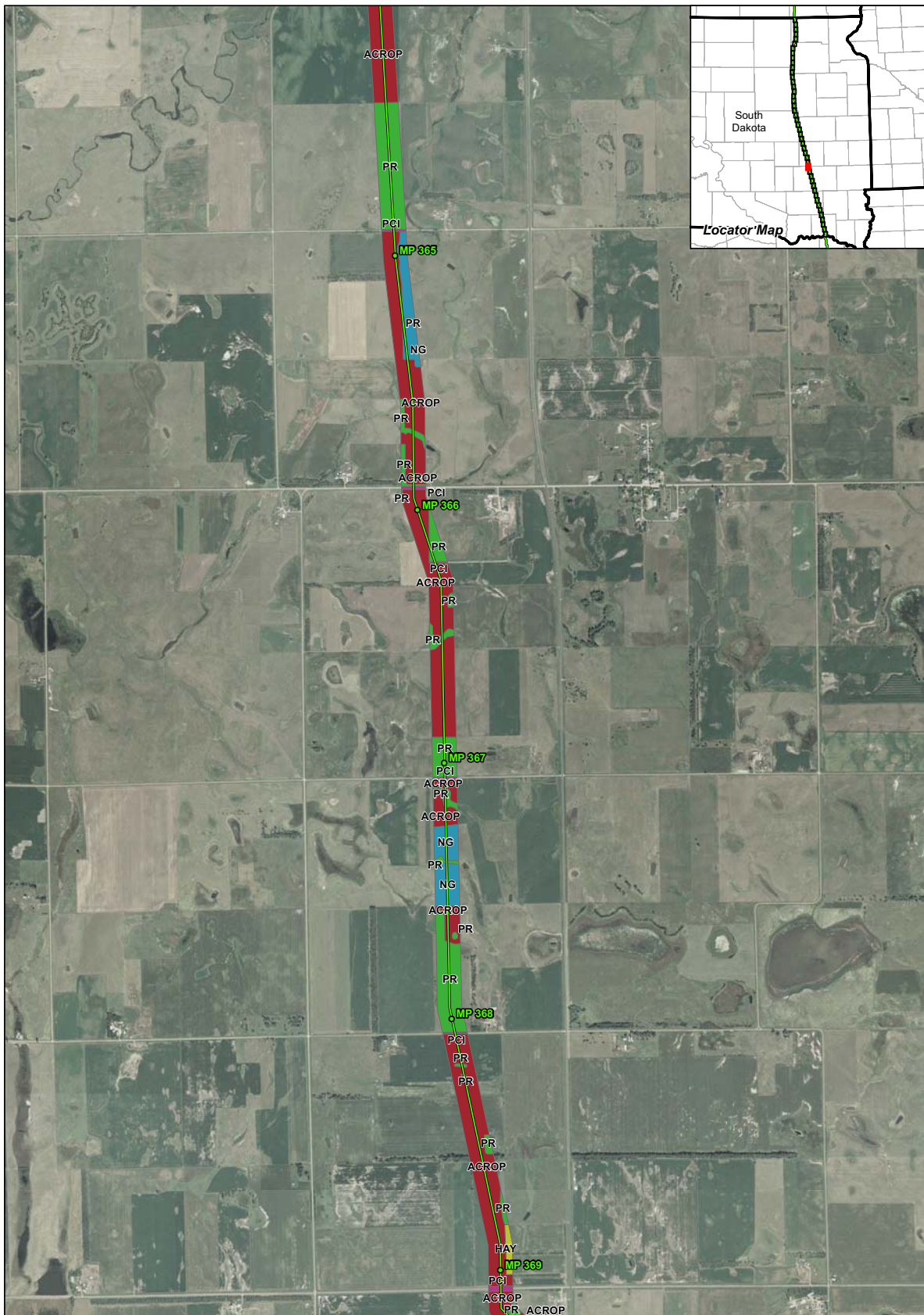
South Dakota Public Utility Commission Application
- Land Use Types -

Map 31 of 46



- ACROP - Row and Non-Row Crop
- HAY - Haylands
- ICROP - Irrigated Crop
- NG - Native Grassland
- PCI - Public, Commercial and Institutional Use
- PR - Pasturelands and Rangelands
- RRES - Rural Residential
- URES - Urban Residential





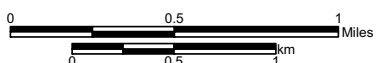
Legend

- Valve Site
- Milepost
- Centerline
- Pump Station - Permanent Disturbance
- Pump Station - Construction Disturbance

Keystone Pipeline Project

South Dakota Public Utility Commission Application
- Land Use Types -

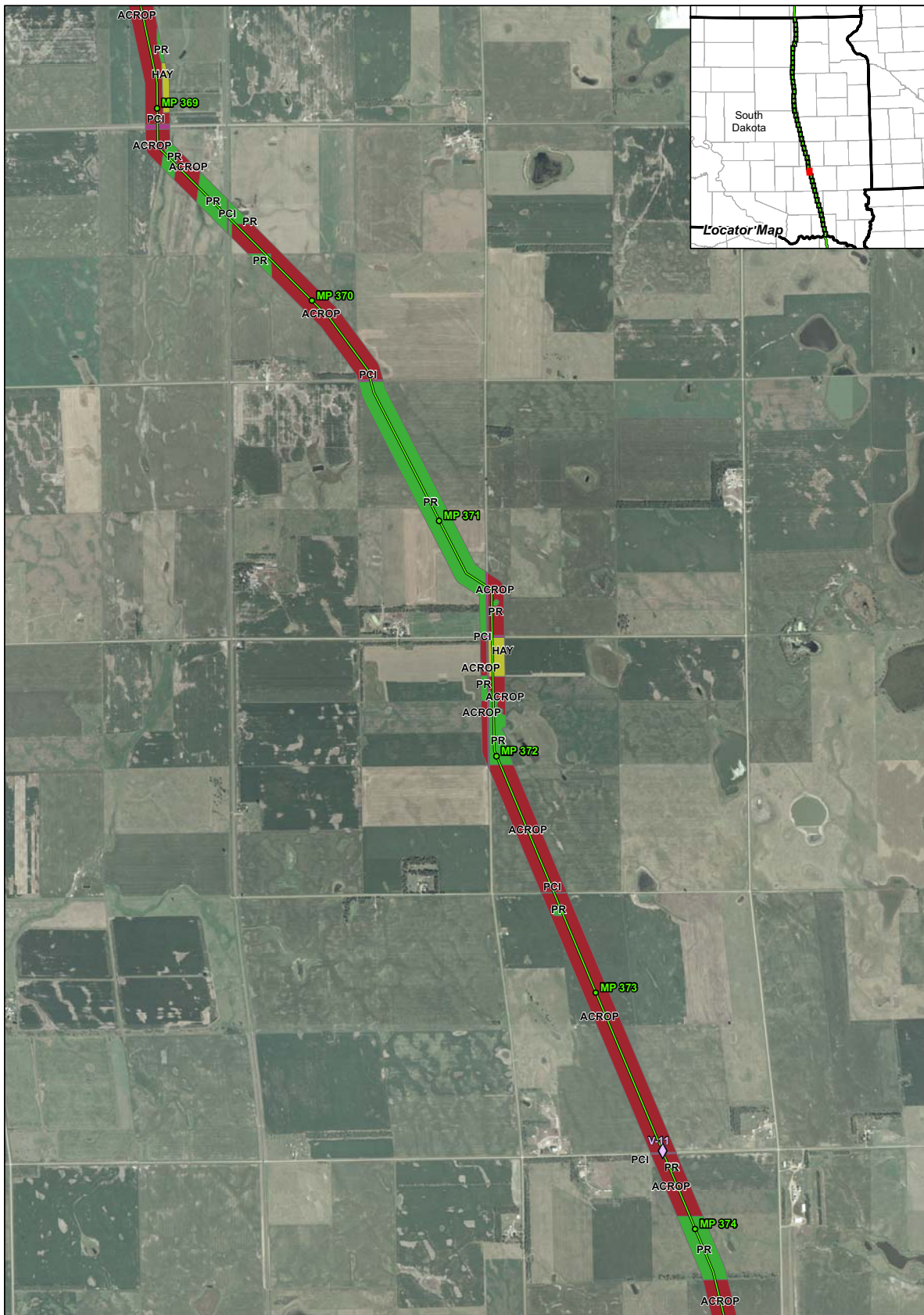
Map 32 of 46



1:24,000

- ACROP - Row and Non-Row Crop
- HAY - Haylands
- ICROP - Irrigated Crop
- NG - Native Grassland
- PCI - Public, Commercial and Institutional Use
- PR - Pasturelands and Rangelands
- RRES - Rural Residential
- URES - Urban Residential





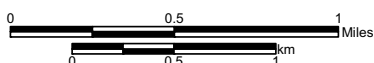
Legend

- Valve Site
- Milepost
- Centerline
- Pump Station - Permanent Disturbance
- Pump Station - Construction Disturbance

Keystone Pipeline Project

South Dakota Public Utility Commission Application
- Land Use Types -

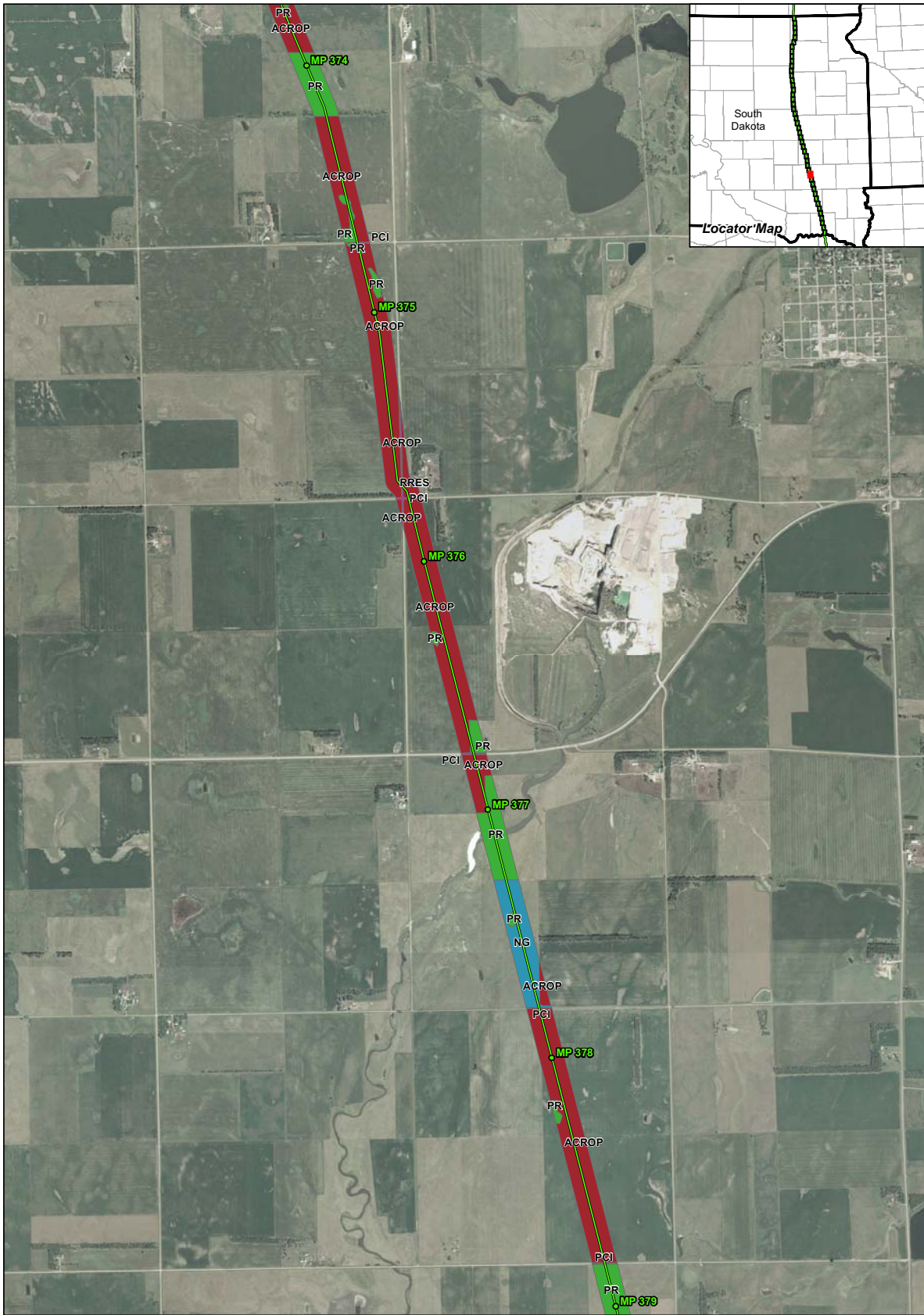
Map 33 of 46



1:24,000

- ACROP - Row and Non-Row Crop
- HAY - Haylands
- ICROP - Irrigated Crop
- NG - Native Grassland
- PCI - Public, Commercial and Institutional Use
- PR - Pasturelands and Rangelands
- RRES - Rural Residential
- URES - Urban Residential





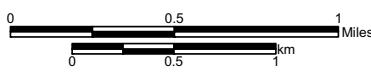
Legend

- Valve Site
- Milepost
- Centerline
- Pump Station - Permanent Disturbance
- Pump Station - Construction Disturbance

Keystone Pipeline Project

South Dakota Public Utility Commission Application
- Land Use Types -

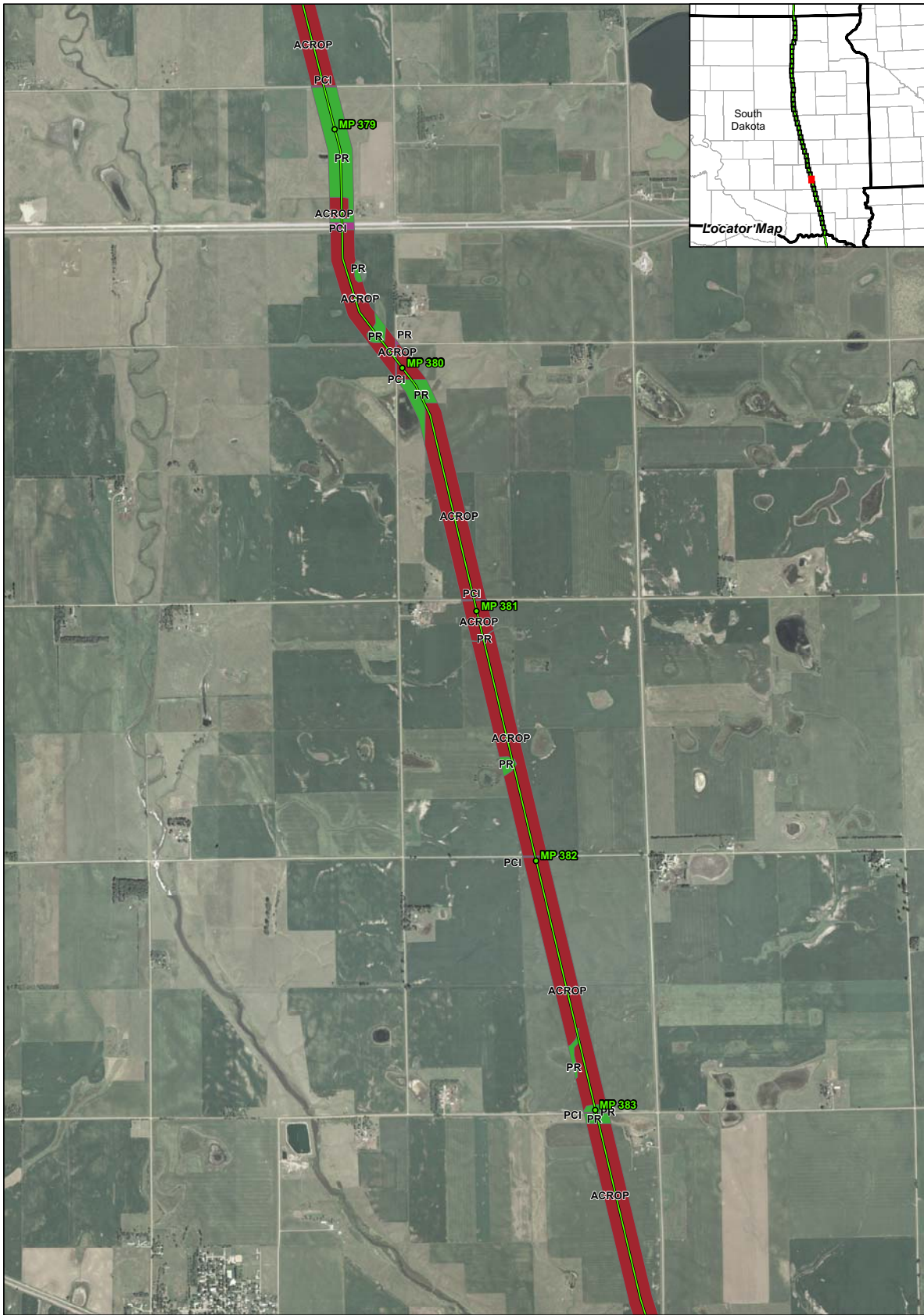
Map 34 of 46



1:24,000

- ACROP - Row and Non-Row Crop
- HAY - Haylands
- ICROP - Irrigated Crop
- NG - Native Grassland
- PCI - Public, Commercial and Institutional Use
- PR - Pasturelands and Rangelands
- RRES - Rural Residential
- URES - Urban Residential





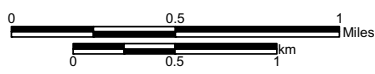
Legend

- Valve Site
- Milepost
- Centerline
- Pump Station - Permanent Disturbance
- Pump Station - Construction Disturbance

Keystone Pipeline Project

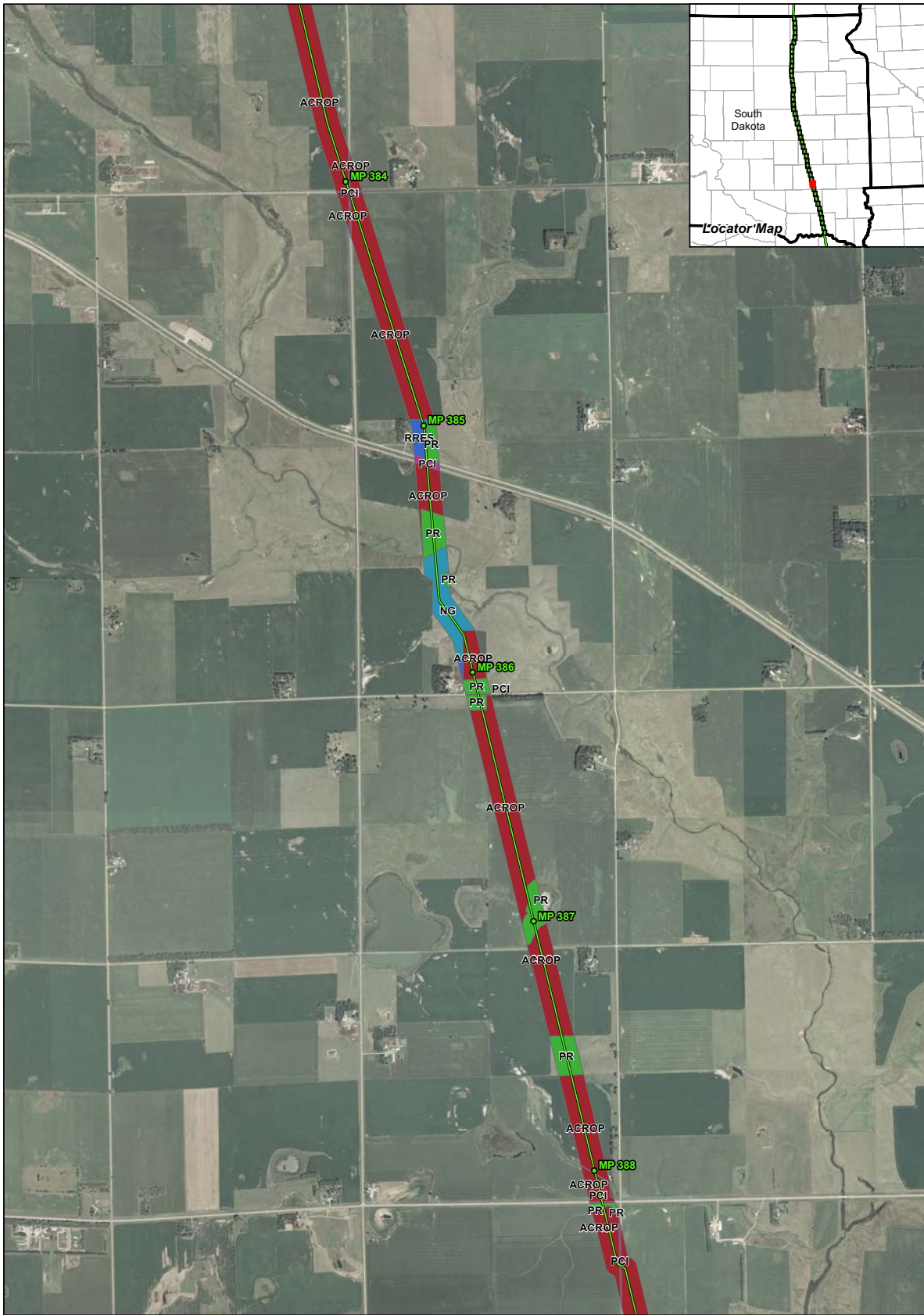
South Dakota Public Utility Commission Application
- Land Use Types -

Map 35 of 46



- ACROP - Row and Non-Row Crop
- HAY - Haylands
- ICROP - Irrigated Crop
- NG - Native Grassland
- PCI - Public, Commercial and Institutional Use
- PR - Pasturelands and Rangelands
- RRES - Rural Residential
- URES - Urban Residential





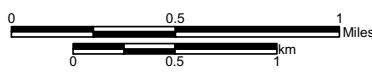
Legend

- Valve Site
- Milepost
- Centerline
- Pump Station - Permanent Disturbance
- Pump Station - Construction Disturbance

Keystone Pipeline Project

South Dakota Public Utility Commission Application
- Land Use Types -

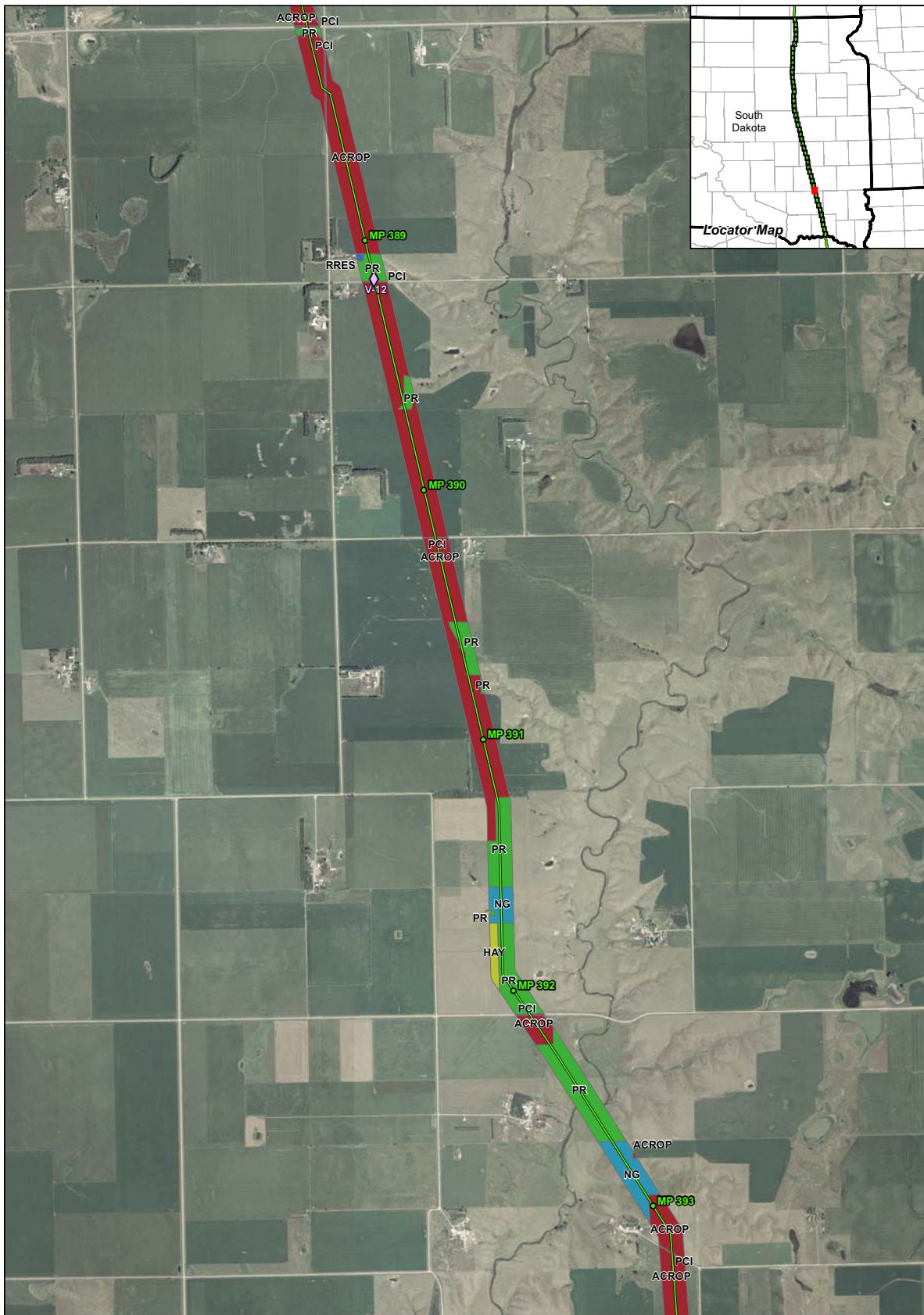
Map 36 of 46



1:24,000

- ACROP - Row and Non-Row Crop
- HAY - Haylands
- ICROP - Irrigated Crop
- NG - Native Grassland
- PCI - Public, Commercial and Institutional Use
- PR - Pasturelands and Rangelands
- RRES - Rural Residential
- URES - Urban Residential





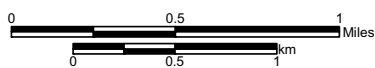
Legend

- Valve Site
- Milepost
- Centerline
- Pump Station - Permanent Disturbance
- Pump Station - Construction Disturbance

Keystone Pipeline Project

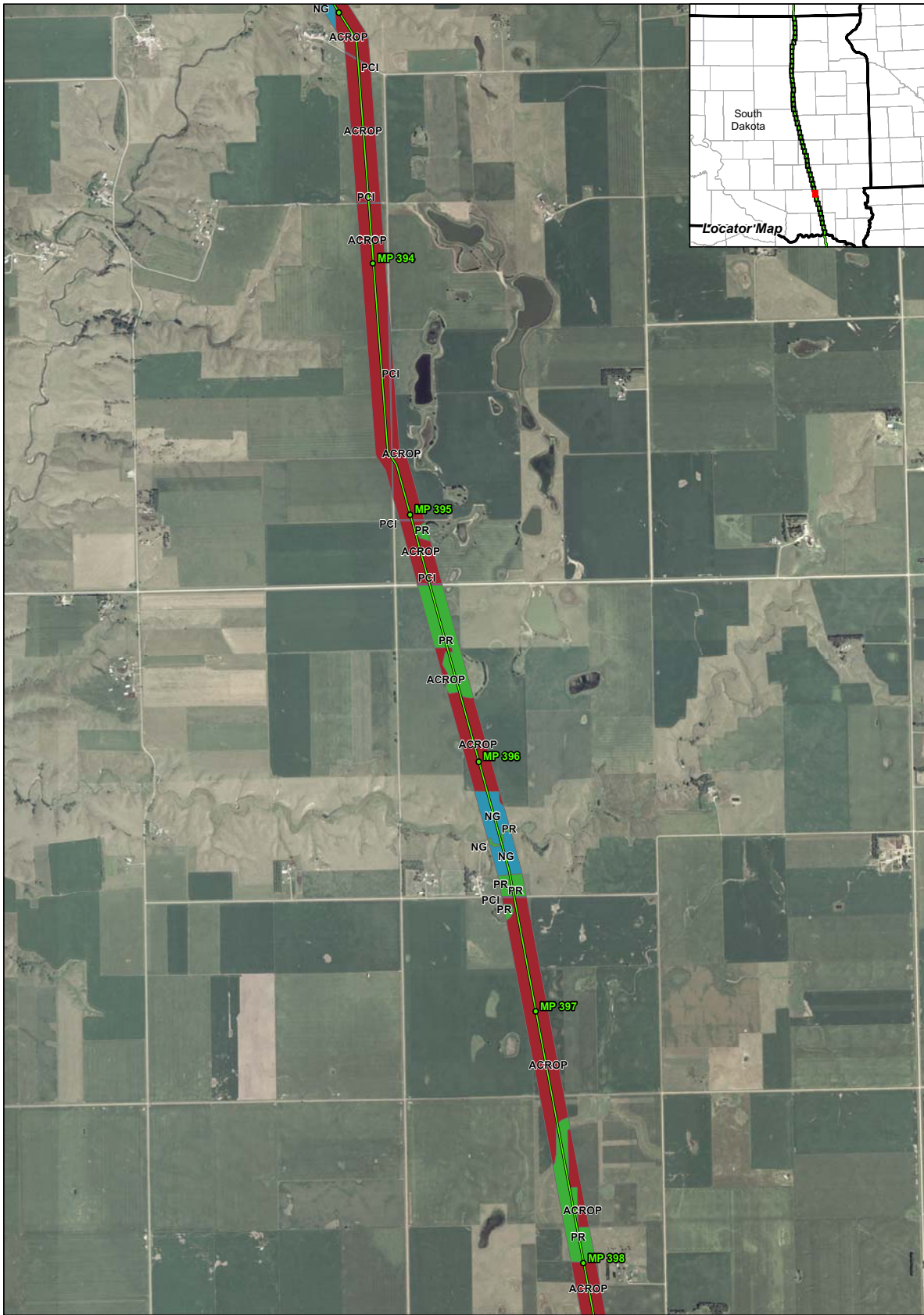
South Dakota Public Utility Commission Application
- Land Use Types -

Map 37 of 46



- ACROP - Row and Non-Row Crop
- HAY - Haylands
- ICROP - Irrigated Crop
- NG - Native Grassland
- PCI - Public, Commercial and Institutional Use
- PR - Pasturelands and Rangelands
- RRES - Rural Residential
- URES - Urban Residential





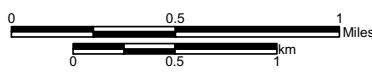
Legend

- Valve Site
- Milepost
- Centerline
- Pump Station - Permanent Disturbance
- Pump Station - Construction Disturbance

Keystone Pipeline Project

South Dakota Public Utility Commission Application
- Land Use Types -

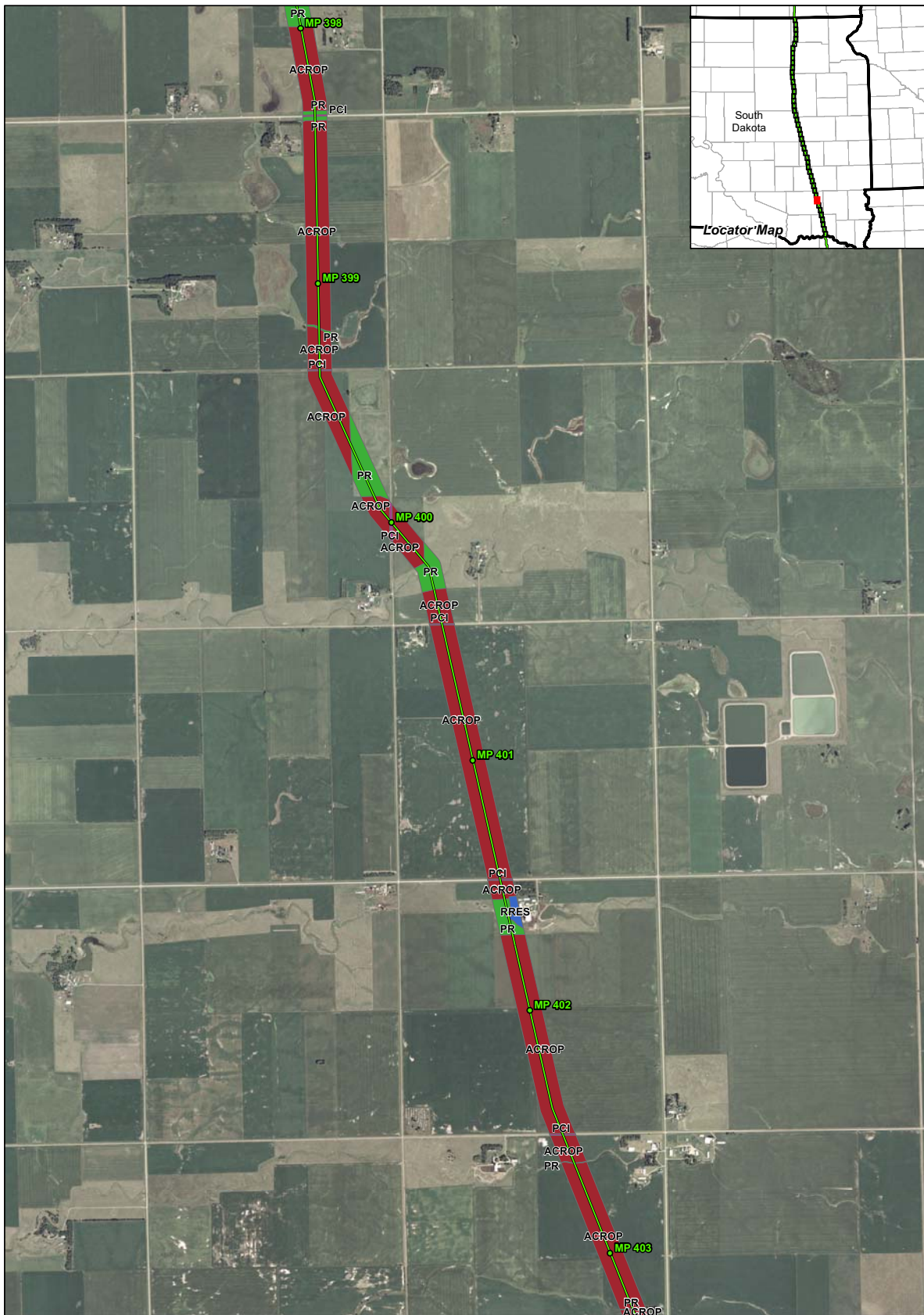
Map 38 of 46



1:24,000

- ACROP - Row and Non-Row Crop
- HAY - Haylands
- ICROP - Irrigated Crop
- NG - Native Grassland
- PCI - Public, Commercial and Institutional Use
- PR - Pasturelands and Rangelands
- RRES - Rural Residential
- URES - Urban Residential





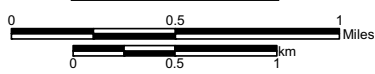
Legend

- ◆ Valve Site
- Milepost
- Centerline
- Pump Station - Permanent Disturbance
- Pump Station - Construction Disturbance

Keystone Pipeline Project

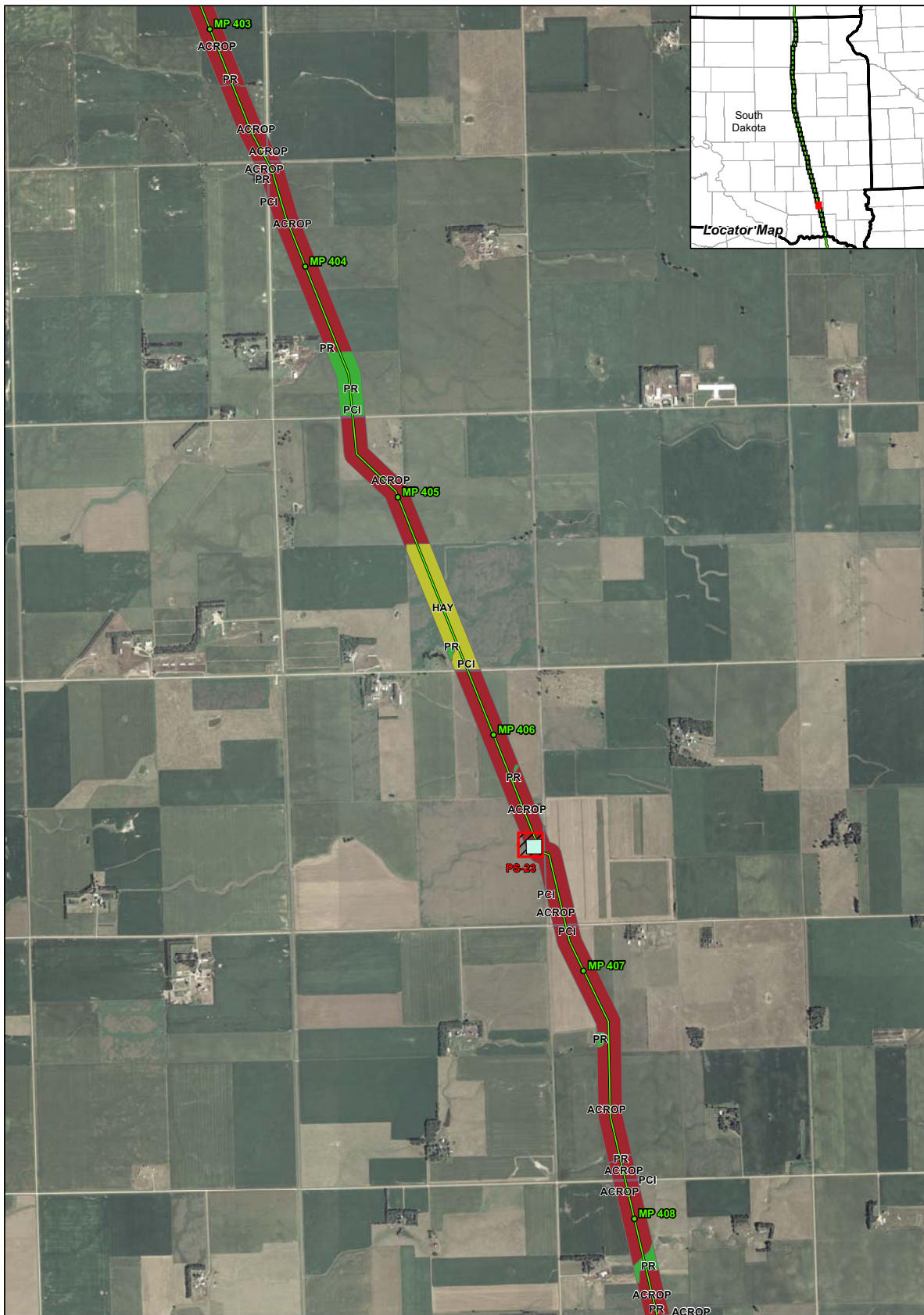
South Dakota Public Utility Commission Application
- Land Use Types -

Map 39 of 46



- ACROP - Row and Non-Row Crop
- HAY - Haylands
- ICROP - Irrigated Crop
- NG - Native Grassland
- PCI - Public, Commercial and Institutional Use
- PR - Pasturelands and Rangelands
- RRES - Rural Residential
- URES - Urban Residential





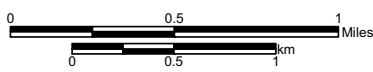
Legend

- Valve Site
- Milepost
- Centerline
- Pump Station - Permanent Disturbance
- Pump Station - Construction Disturbance

Keystone Pipeline Project

South Dakota Public Utility Commission Application
- Land Use Types -

Map 40 of 46



1:24,000

- ACROP - Row and Non-Row Crop
- HAY - Haylands
- ICROP - Irrigated Crop
- NG - Native Grassland
- PCI - Public, Commercial and Institutional Use
- PR - Pasturelands and Rangelands
- RRES - Rural Residential
- URES - Urban Residential

