

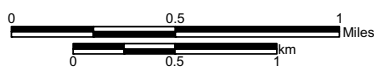
Legend

- Valve Site
- Milepost
- Centerline
- Pump Station - Permanent Disturbance
- Pump Station - Construction Disturbance

Keystone Pipeline Project

South Dakota Public Utility Commission Application
- Land Use Types -

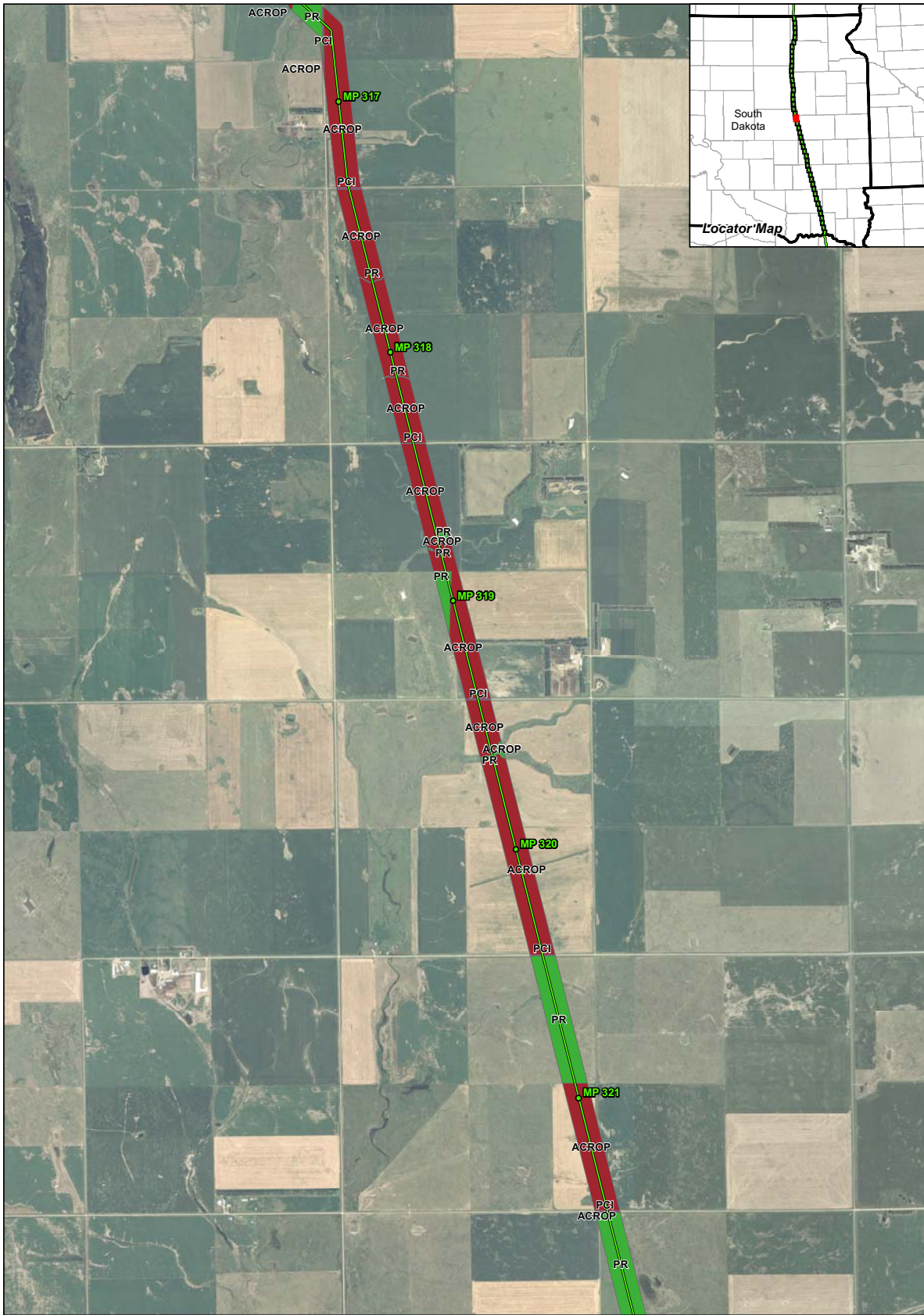
Map 21 of 46



1:24,000

- ACROP - Row and Non-Row Crop
- HAY - Haylands
- ICROP - Irrigated Crop
- NG - Native Grassland
- PCI - Public, Commercial and Institutional Use
- PR - Pasturelands and Rangelands
- RRES - Rural Residential
- URES - Urban Residential





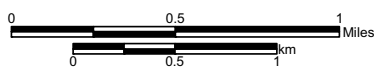
Legend

- ◆ Valve Site
- Milepost
- Centerline
- Pump Station - Permanent Disturbance
- Pump Station - Construction Disturbance

Keystone Pipeline Project

South Dakota Public Utility Commission Application
- Land Use Types -

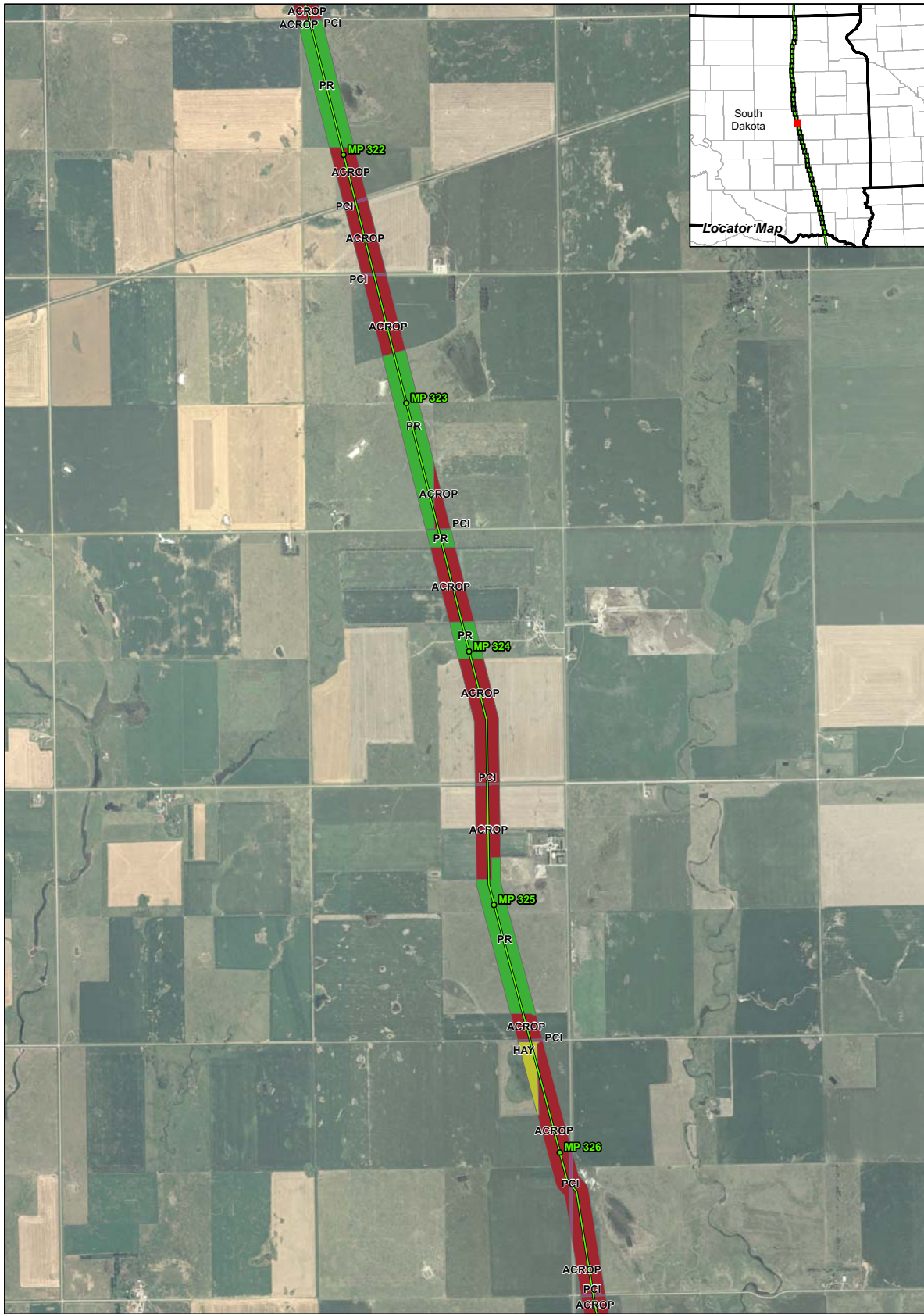
Map 22 of 46



1:24,000

- ACROP - Row and Non-Row Crop
- HAY - Haylands
- ICROP - Irrigated Crop
- NG - Native Grassland
- PCI - Public, Commercial and Institutional Use
- PR - Pasturelands and Rangelands
- RRES - Rural Residential
- URES - Urban Residential





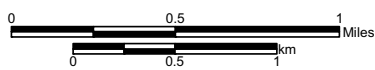
Legend

- Valve Site
- Milepost
- Centerline
- Pump Station - Permanent Disturbance
- Pump Station - Construction Disturbance

Keystone Pipeline Project

South Dakota Public Utility Commission Application
- Land Use Types -

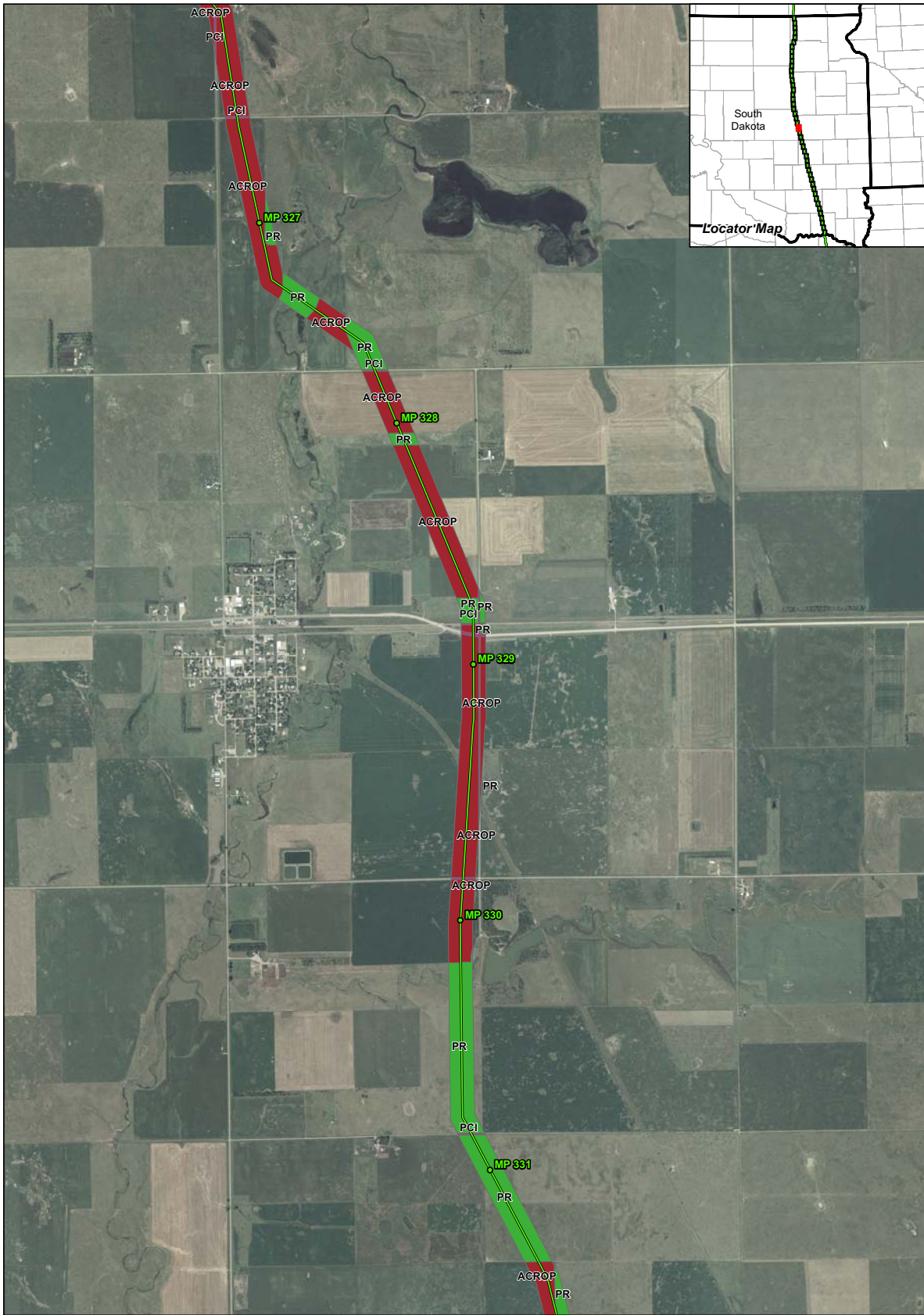
Map 23 of 46



1:24,000

- ACROP - Row and Non-Row Crop
- HAY - Haylands
- ICROP - Irrigated Crop
- NG - Native Grassland
- PCI - Public, Commercial and Institutional Use
- PR - Pasturelands and Rangelands
- RRES - Rural Residential
- URES - Urban Residential





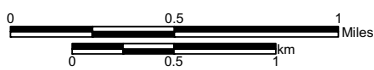
Legend

- ◆ Valve Site
- Milepost
- Centerline
- Pump Station - Permanent Disturbance
- Pump Station - Construction Disturbance

Keystone Pipeline Project

South Dakota Public Utility Commission Application
- Land Use Types -

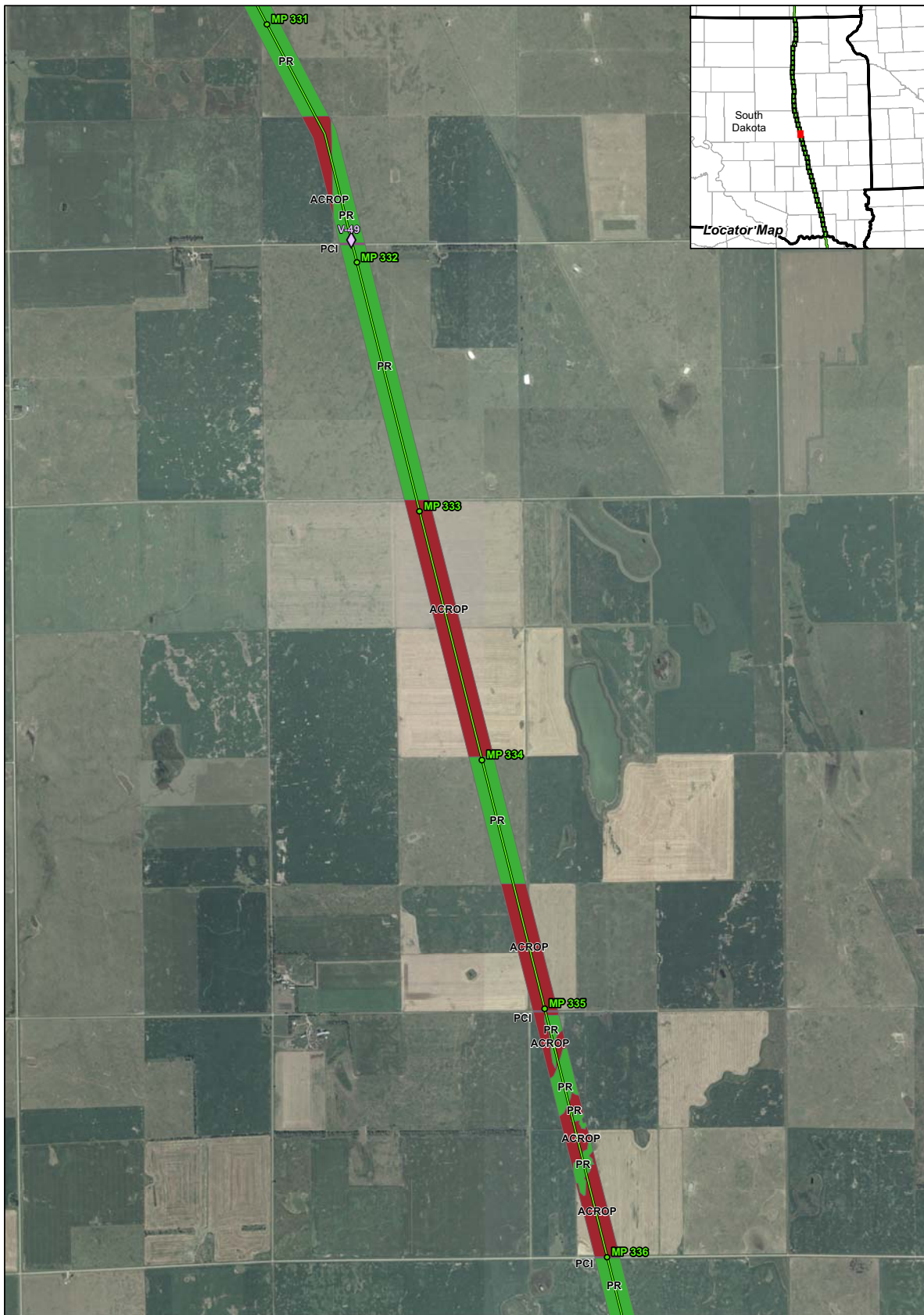
Map 24 of 46



1:24,000

- ACROP - Row and Non-Row Crop
- HAY - Haylands
- ICROP - Irrigated Crop
- NG - Native Grassland
- PCI - Public, Commercial and Institutional Use
- PR - Pasturelands and Rangelands
- RRES - Rural Residential
- URES - Urban Residential





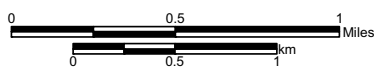
Legend

- Valve Site
- Milepost
- Centerline
- Pump Station - Permanent Disturbance
- Pump Station - Construction Disturbance

Keystone Pipeline Project

South Dakota Public Utility Commission Application
- Land Use Types -

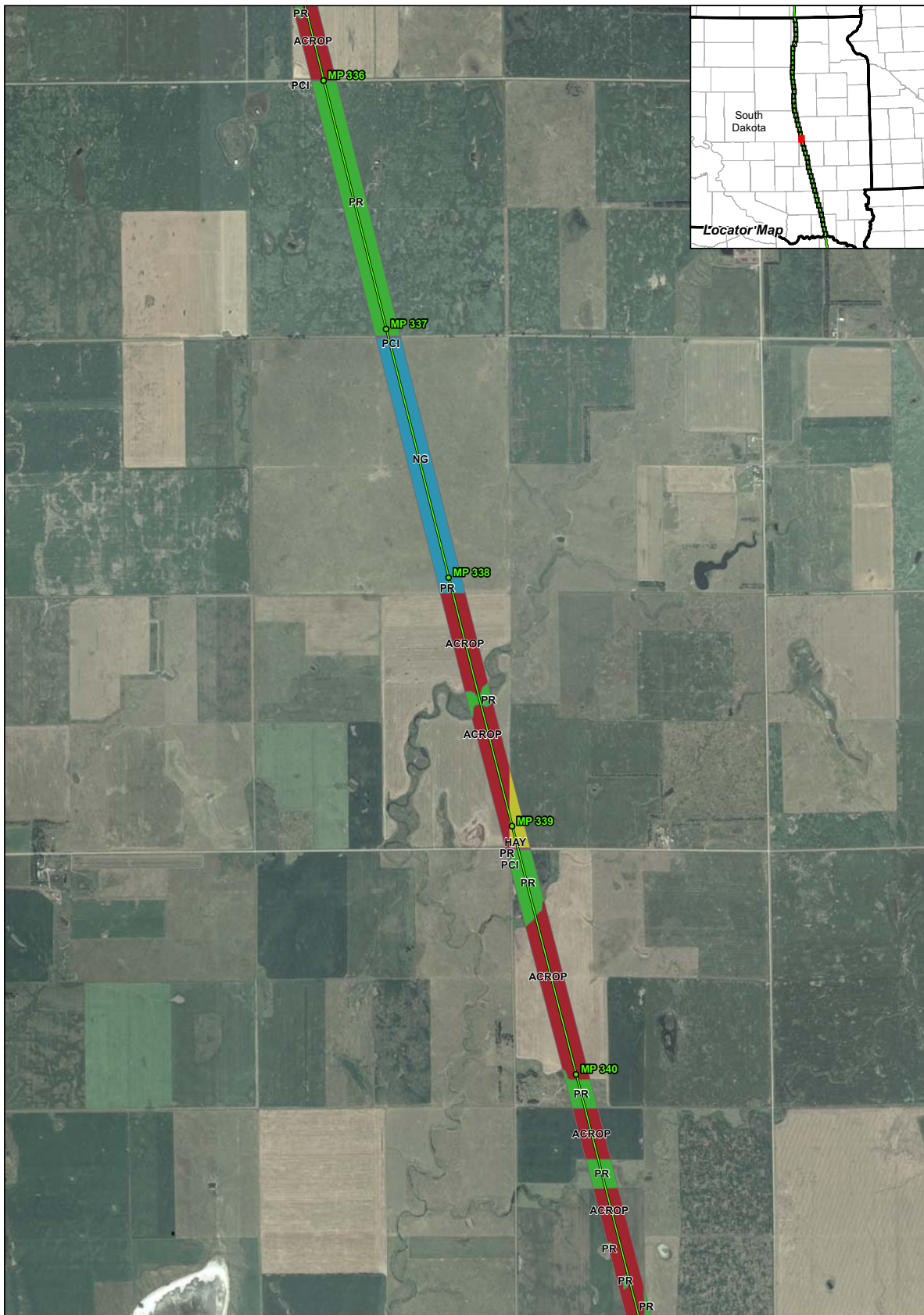
Map 25 of 46



1:24,000

- ACROP - Row and Non-Row Crop
- HAY - Haylands
- ICROP - Irrigated Crop
- NG - Native Grassland
- PCI - Public, Commercial and Institutional Use
- PR - Pasturelands and Rangelands
- RRES - Rural Residential
- URES - Urban Residential





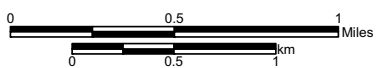
Legend

- Valve Site
- Milepost
- Centerline
- Pump Station - Permanent Disturbance
- Pump Station - Construction Disturbance

Keystone Pipeline Project

South Dakota Public Utility Commission Application
- Land Use Types -

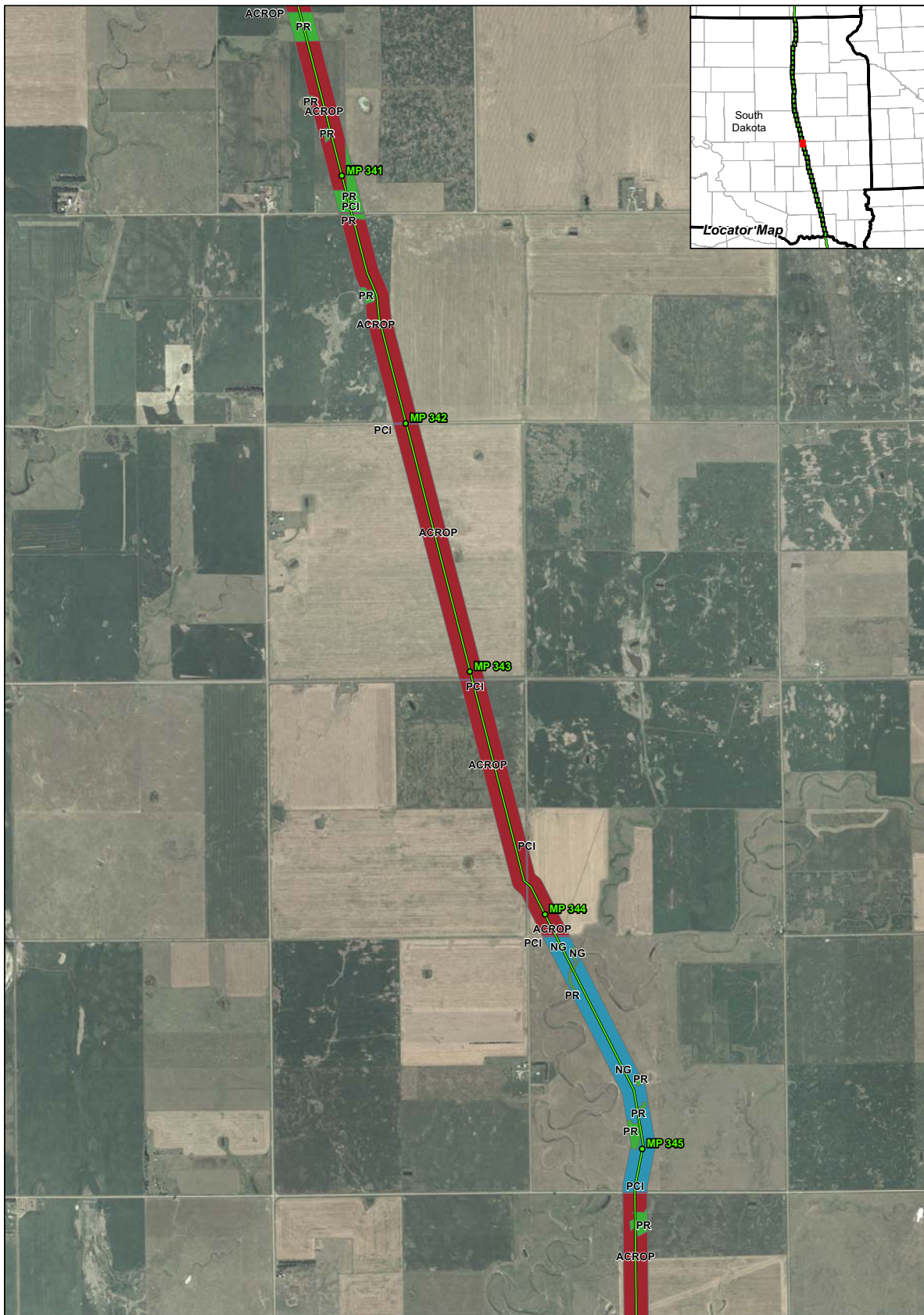
Map 26 of 46



1:24,000

- ACROP - Row and Non-Row Crop
- HAY - Haylands
- ICROP - Irrigated Crop
- NG - Native Grassland
- PCI - Public, Commercial and Institutional Use
- PR - Pasturelands and Rangelands
- RRES - Rural Residential
- URES - Urban Residential





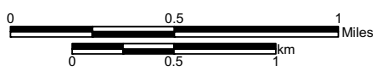
Legend

- Valve Site
- Milepost
- Centerline
- Pump Station - Permanent Disturbance
- Pump Station - Construction Disturbance

Keystone Pipeline Project

South Dakota Public Utility Commission Application
- Land Use Types -

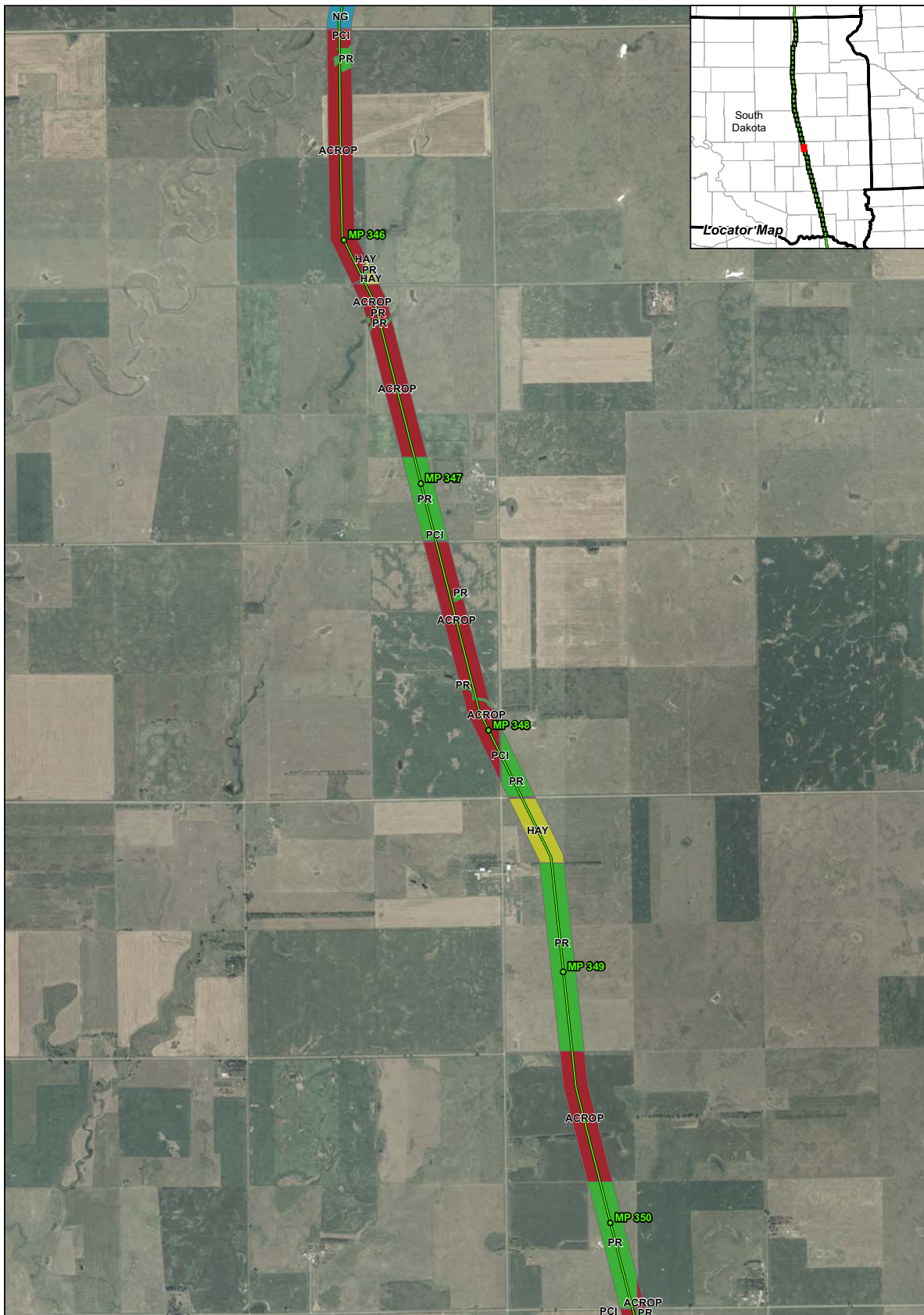
Map 27 of 46



1:24,000

- ACROP - Row and Non-Row Crop
- HAY - Haylands
- ICROP - Irrigated Crop
- NG - Native Grassland
- PCI - Public, Commercial and Institutional Use
- PR - Pasturelands and Rangelands
- RRES - Rural Residential
- URES - Urban Residential





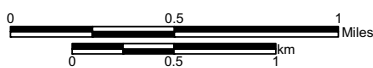
Legend

- Valve Site
- Milepost
- Centerline
- Pump Station - Permanent Disturbance
- Pump Station - Construction Disturbance

Keystone Pipeline Project

South Dakota Public Utility Commission Application
- Land Use Types -

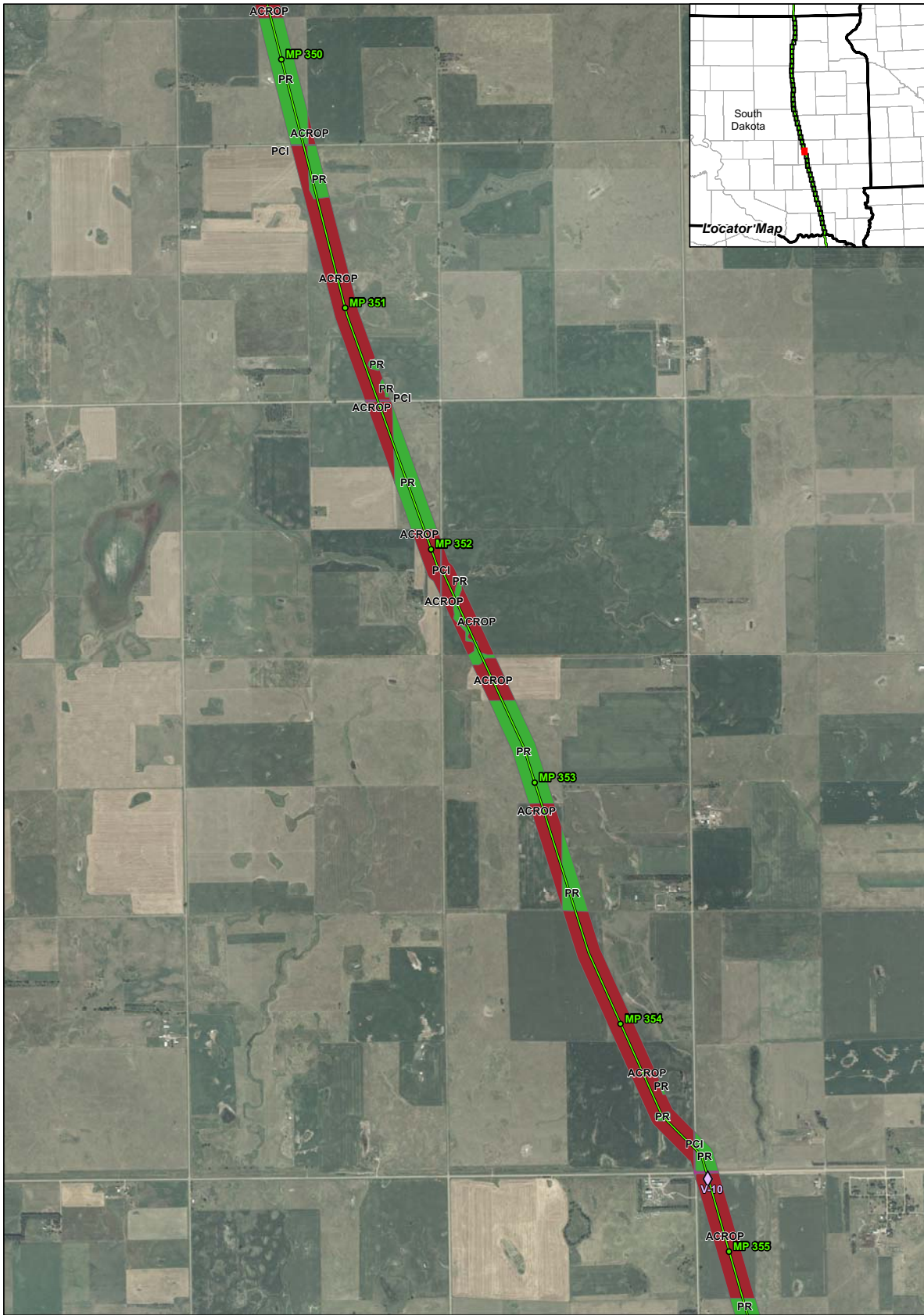
Map 28 of 46



1:24,000

- ACROP - Row and Non-Row Crop
- HAY - Haylands
- ICROP - Irrigated Crop
- NG - Native Grassland
- PCI - Public, Commercial and Institutional Use
- PR - Pasturelands and Rangelands
- RRES - Rural Residential
- URES - Urban Residential





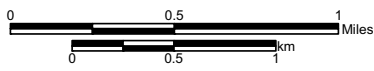
Legend

- Valve Site
- Milepost
- Centerline
- Pump Station - Permanent Disturbance
- Pump Station - Construction Disturbance

Keystone Pipeline Project

South Dakota Public Utility Commission Application
- Land Use Types -

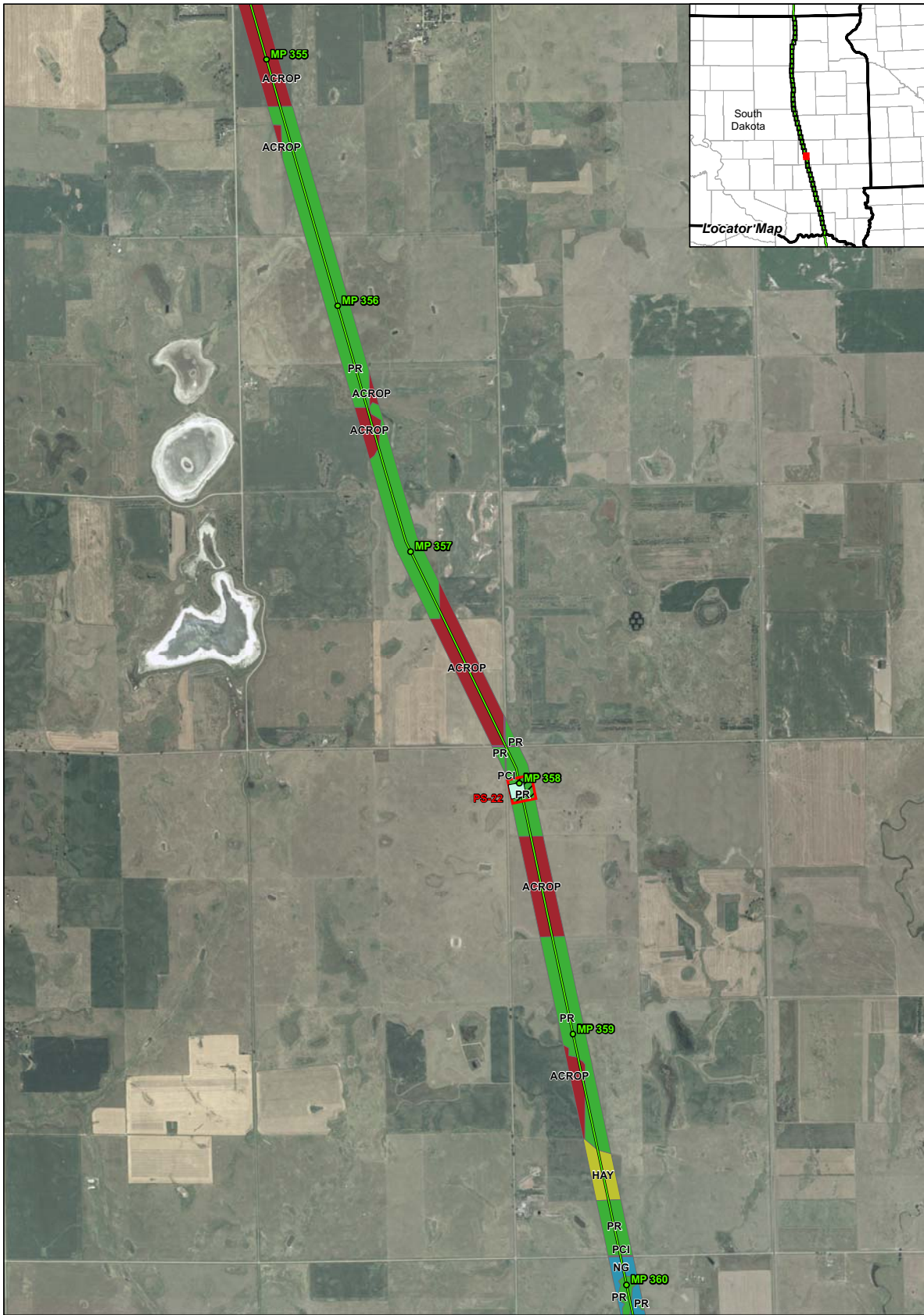
Map 29 of 46



1:24,000

- ACROP - Row and Non-Row Crop
- HAY - Haylands
- ICROP - Irrigated Crop
- NG - Native Grassland
- PCI - Public, Commercial and Institutional Use
- PR - Pasturelands and Rangelands
- RRES - Rural Residential
- URES - Urban Residential





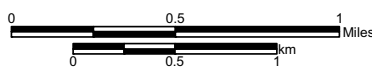
Legend

- Valve Site
- Milepost
- Centerline
- Pump Station - Permanent Disturbance
- Pump Station - Construction Disturbance

Keystone Pipeline Project

South Dakota Public Utility Commission Application
- Land Use Types -

Map 30 of 46



1:24,000

- ACROP - Row and Non-Row Crop
- HAY - Haylands
- ICROP - Irrigated Crop
- NG - Native Grassland
- PCI - Public, Commercial and Institutional Use
- PR - Pasturelands and Rangelands
- RRES - Rural Residential
- URES - Urban Residential

