

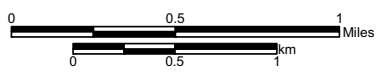
Legend

- Valve Site
- Milepost
- Centerline
- Pump Station - Permanent Disturbance
- Pump Station - Construction Disturbance

Keystone Pipeline Project

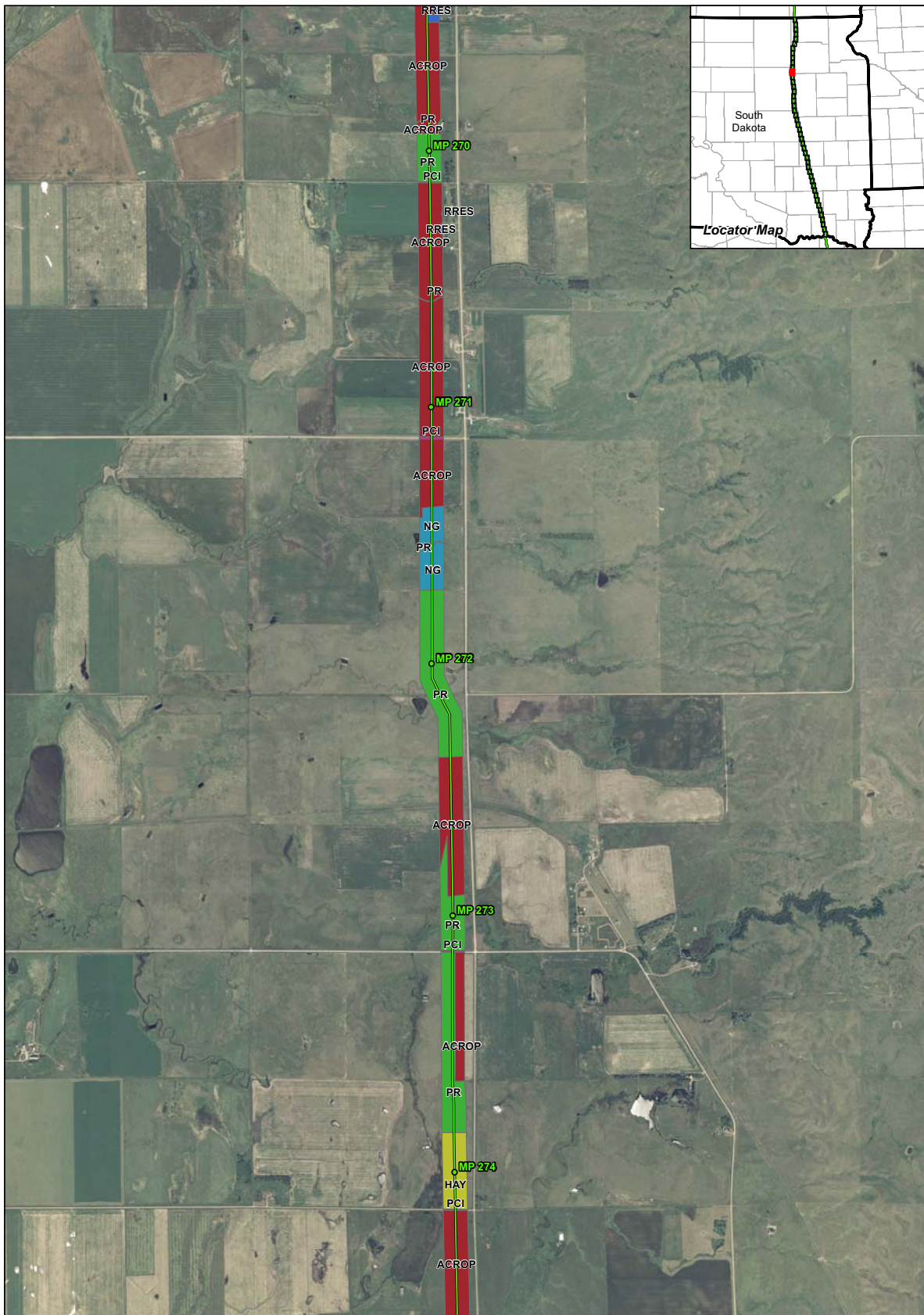
South Dakota Public Utility Commission Application
- Land Use Types -

Map 11 of 46



- ACROP - Row and Non-Row Crop
- HAY - Haylands
- ICROP - Irrigated Crop
- NG - Native Grassland
- PCI - Public, Commercial and Institutional Use
- PR - Pasturelands and Rangelands
- RRES - Rural Residential
- URES - Urban Residential





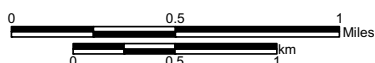
Legend

- Valve Site
- Milepost
- Centerline
- Pump Station - Permanent Disturbance
- Pump Station - Construction Disturbance

Keystone Pipeline Project

South Dakota Public Utility Commission Application
- Land Use Types -

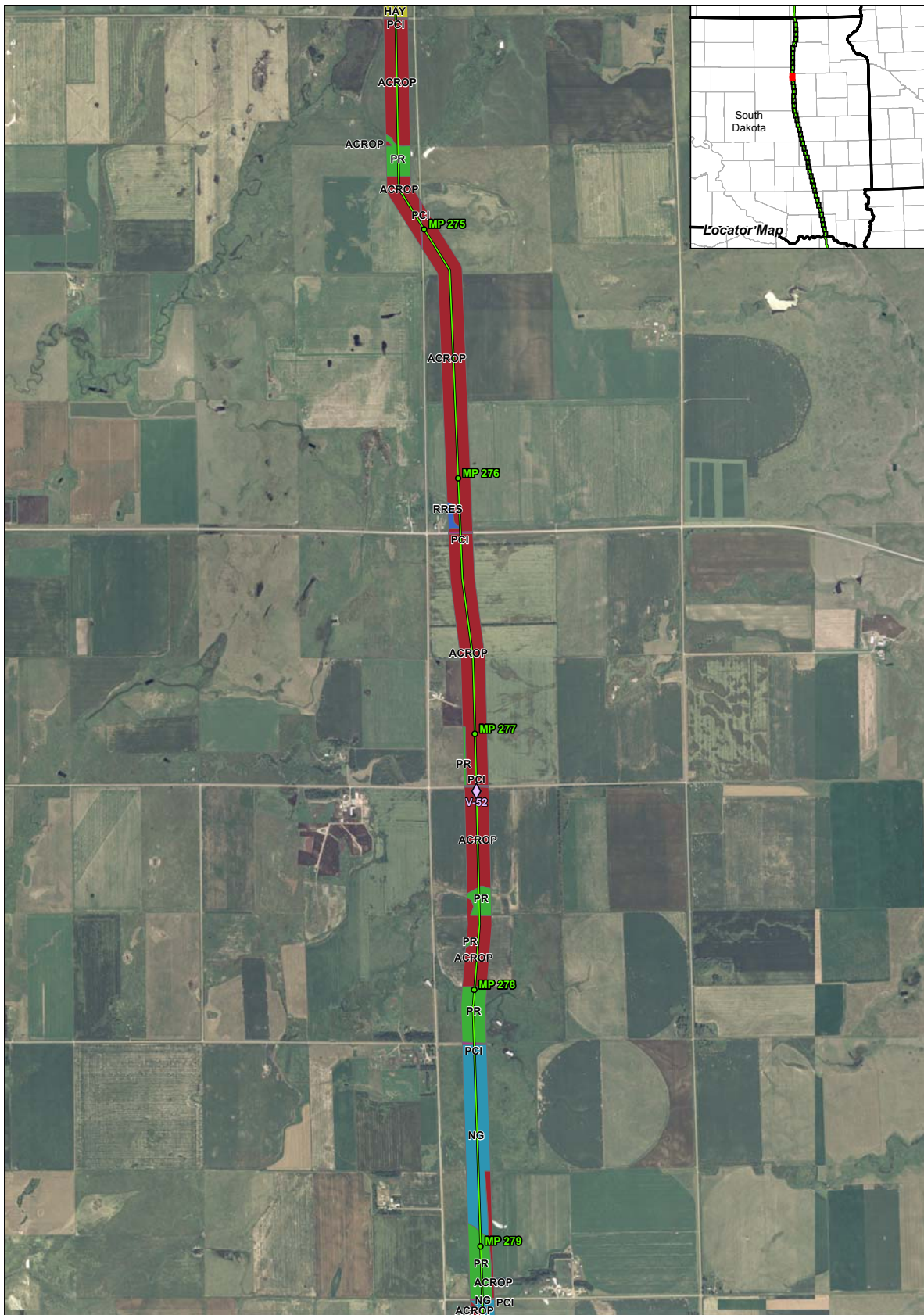
Map 12 of 46

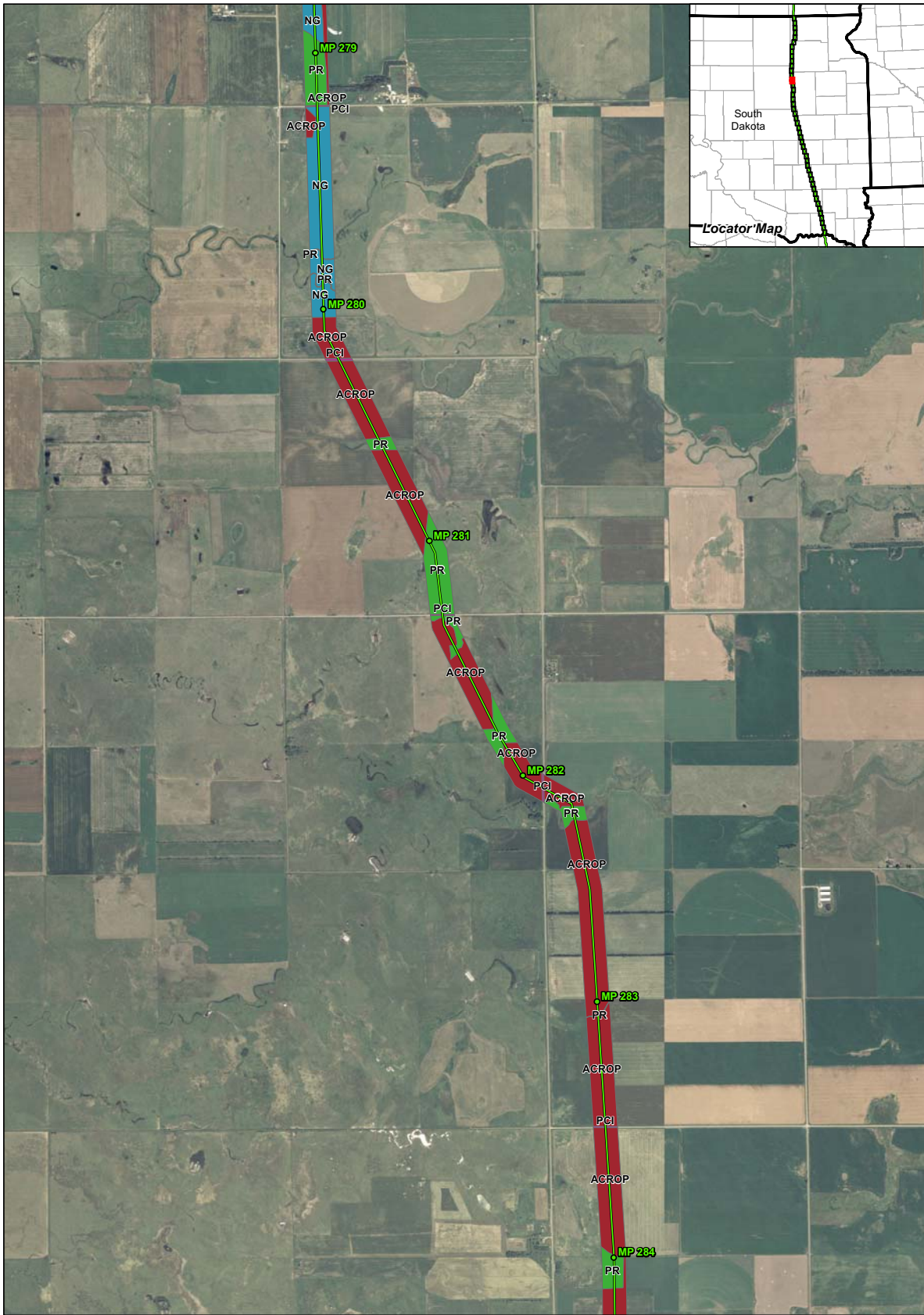


1:24,000

- ACROP - Row and Non-Row Crop
- HAY - Haylands
- ICROP - Irrigated Crop
- NG - Native Grassland
- PCI - Public, Commercial and Institutional Use
- PR - Pasturelands and Rangelands
- RRES - Rural Residential
- URES - Urban Residential







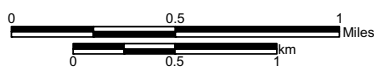
Legend

- Valve Site
- Milepost
- Centerline
- Pump Station - Permanent Disturbance
- Pump Station - Construction Disturbance

Keystone Pipeline Project

South Dakota Public Utility Commission Application
- Land Use Types -

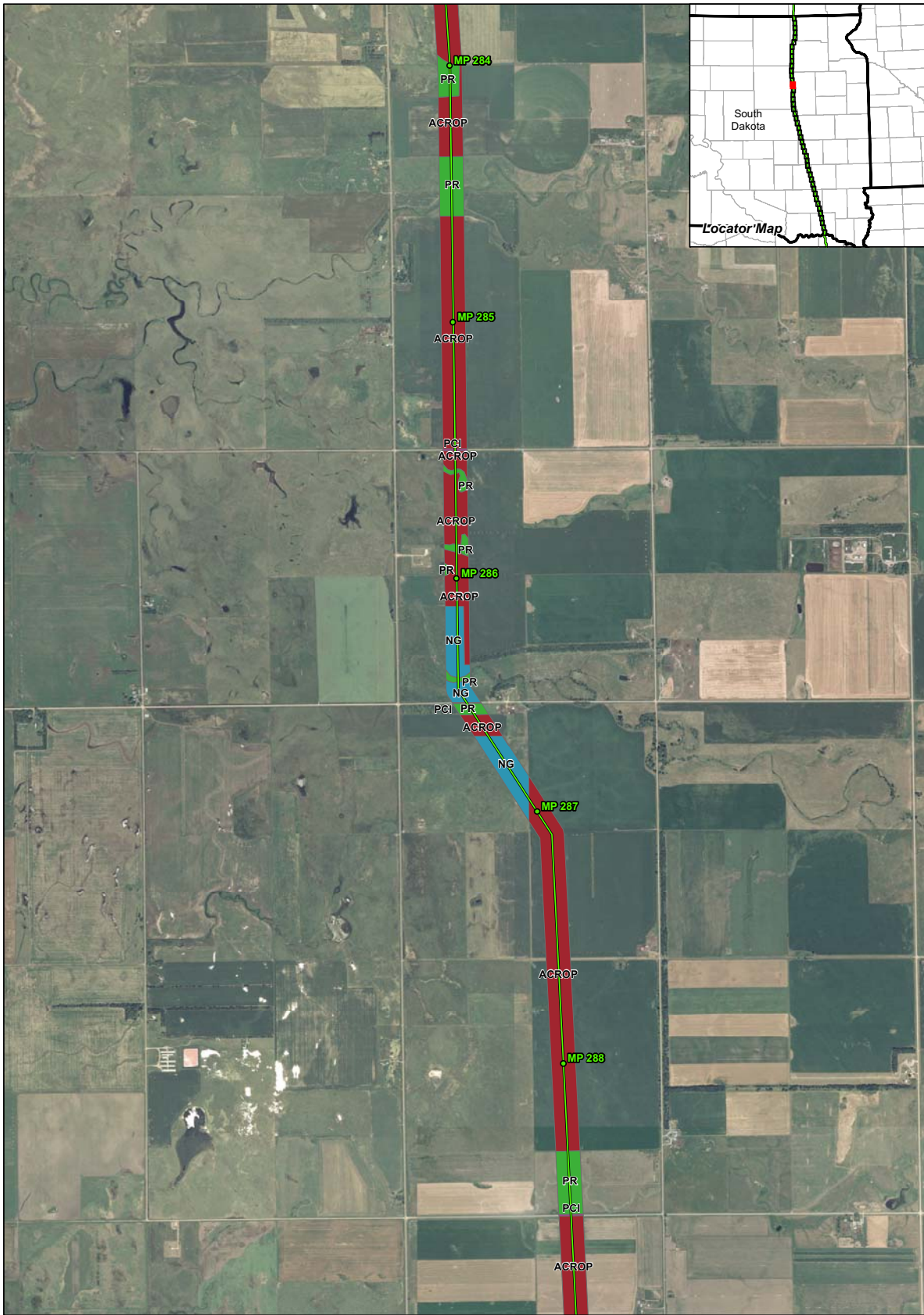
Map 14 of 46



1:24,000

- ACROP - Row and Non-Row Crop
- HAY - Haylands
- ICROP - Irrigated Crop
- NG - Native Grassland
- PCI - Public, Commercial and Institutional Use
- PR - Pasturelands and Rangelands
- RRES - Rural Residential
- URES - Urban Residential





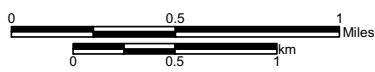
Legend

- ◆ Valve Site
- Milepost
- Centerline
- Pump Station - Permanent Disturbance
- Pump Station - Construction Disturbance

Keystone Pipeline Project

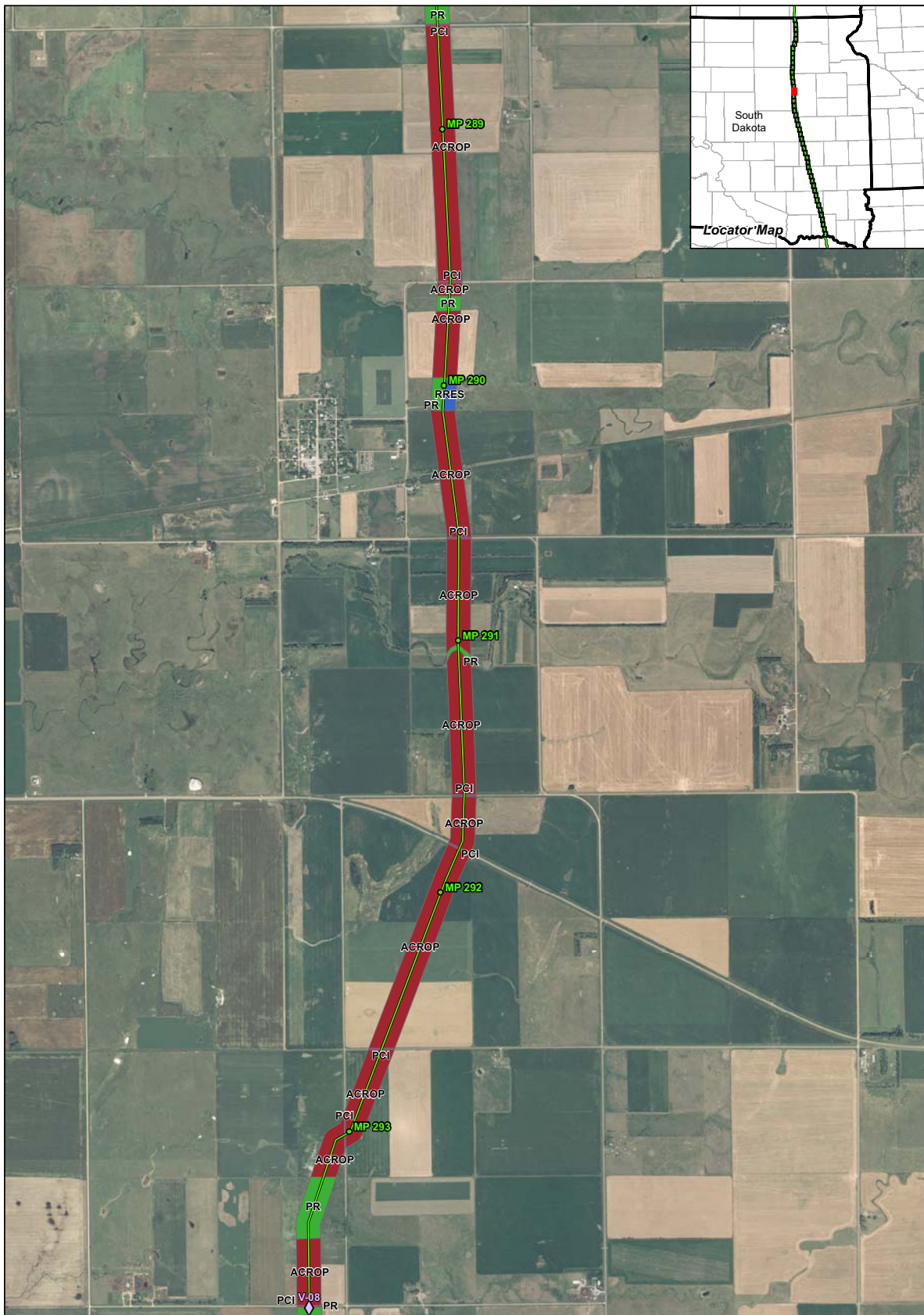
South Dakota Public Utility Commission Application
- Land Use Types -

Map 15 of 46



- ACROP - Row and Non-Row Crop
- HAY - Haylands
- ICROP - Irrigated Crop
- NG - Native Grassland
- PCI - Public, Commercial and Institutional Use
- PR - Pasturelands and Rangelands
- RRES - Rural Residential
- URES - Urban Residential





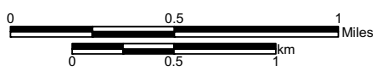
Legend

- Valve Site
- Milepost
- Centerline
- Pump Station - Permanent Disturbance
- Pump Station - Construction Disturbance

Keystone Pipeline Project

South Dakota Public Utility Commission Application
- Land Use Types -

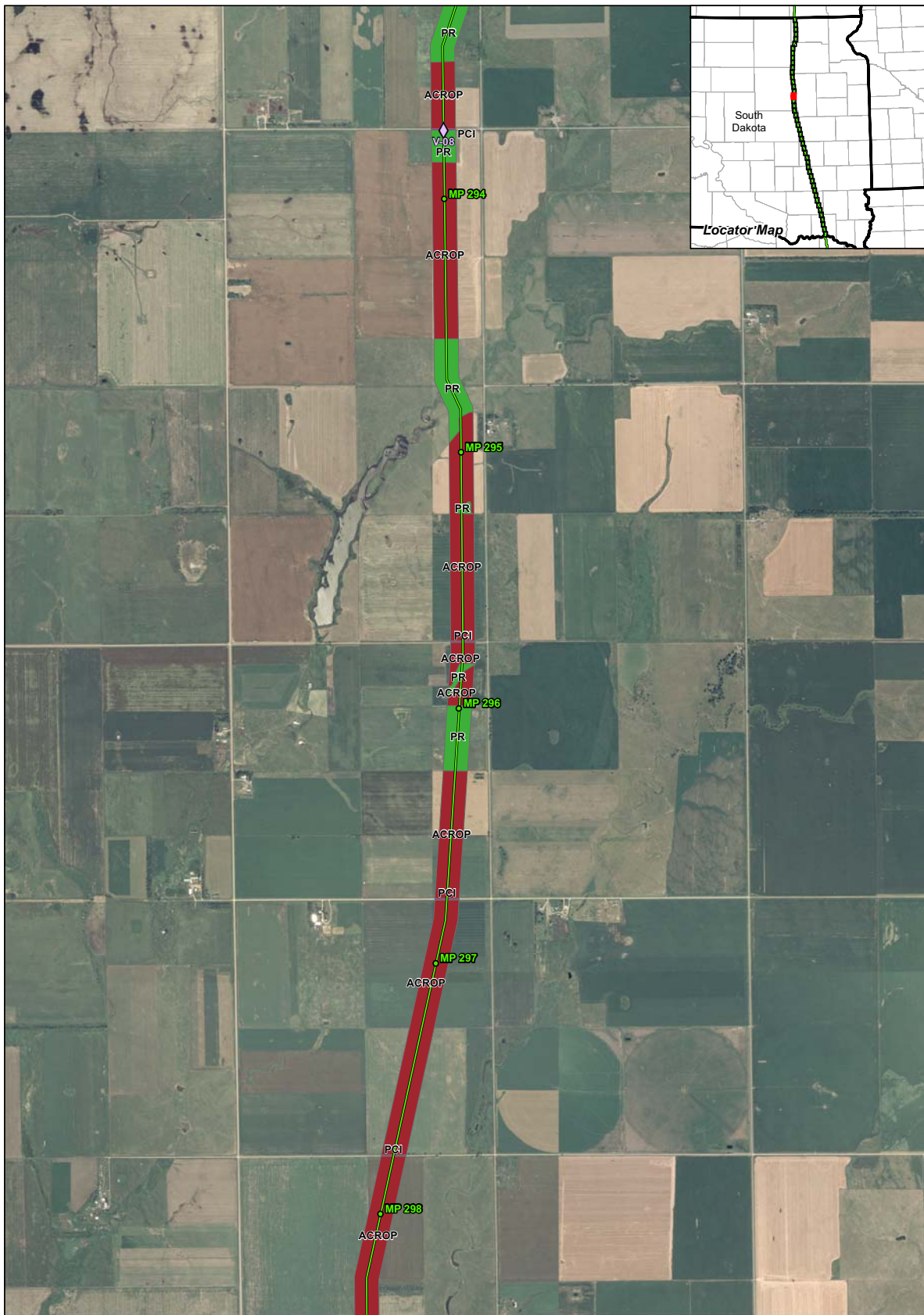
Map 16 of 46



1:24,000

- ACROP - Row and Non-Row Crop
- HAY - Haylands
- ICROP - Irrigated Crop
- NG - Native Grassland
- PCI - Public, Commercial and Institutional Use
- PR - Pasturelands and Rangelands
- RRES - Rural Residential
- URES - Urban Residential





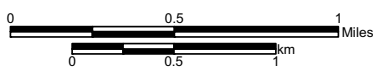
Legend

- Valve Site
- Milepost
- Centerline
- Pump Station - Permanent Disturbance
- Pump Station - Construction Disturbance

Keystone Pipeline Project

South Dakota Public Utility Commission Application
- Land Use Types -

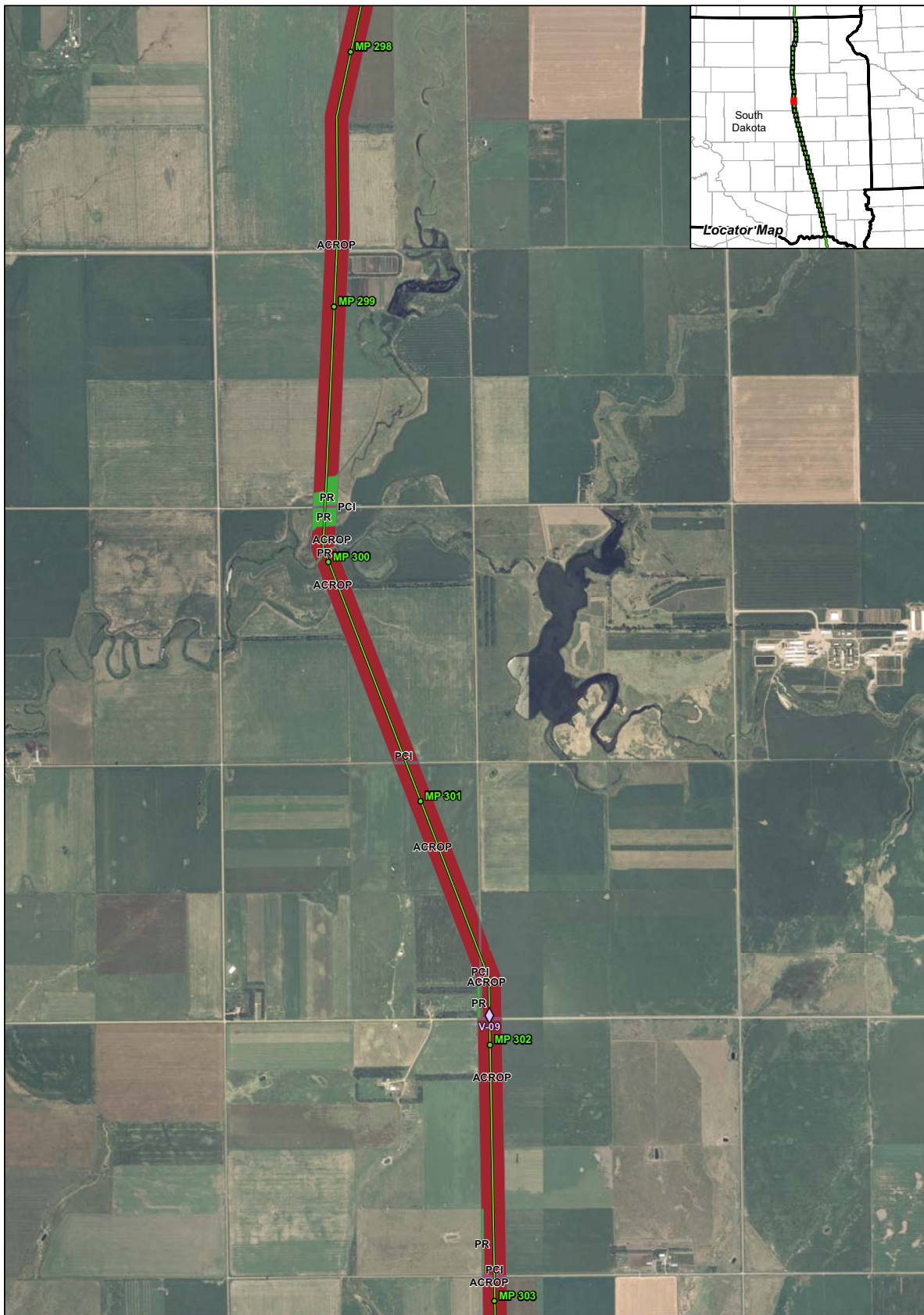
Map 17 of 46



1:24,000

- ACROP - Row and Non-Row Crop
- HAY - Haylands
- ICROP - Irrigated Crop
- NG - Native Grassland
- PCI - Public, Commercial and Institutional Use
- PR - Pasturelands and Rangelands
- RRES - Rural Residential
- URES - Urban Residential





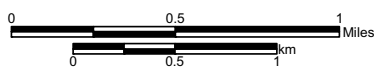
Legend

- Valve Site
- Milepost
- Centerline
- Pump Station - Permanent Disturbance
- Pump Station - Construction Disturbance

Keystone Pipeline Project

South Dakota Public Utility Commission Application
- Land Use Types -

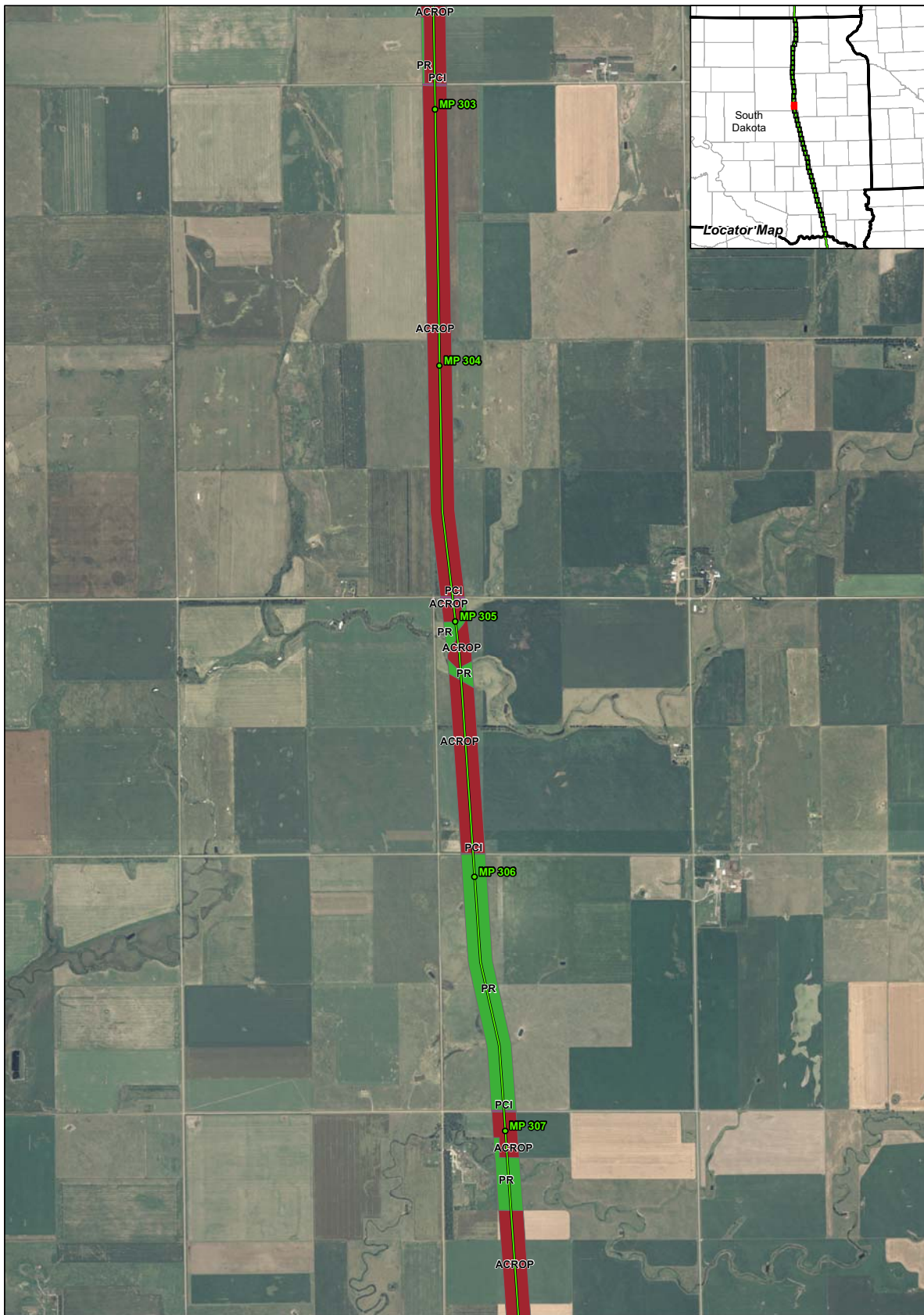
Map 18 of 46



1:24,000

- ACROP - Row and Non-Row Crop
- HAY - Haylands
- ICROP - Irrigated Crop
- NG - Native Grassland
- PCI - Public, Commercial and Institutional Use
- PR - Pasturelands and Rangelands
- RRES - Rural Residential
- URES - Urban Residential





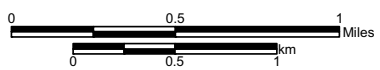
Legend

- ◆ Valve Site
- Milepost
- Centerline
- Pump Station - Permanent Disturbance
- Pump Station - Construction Disturbance

Keystone Pipeline Project

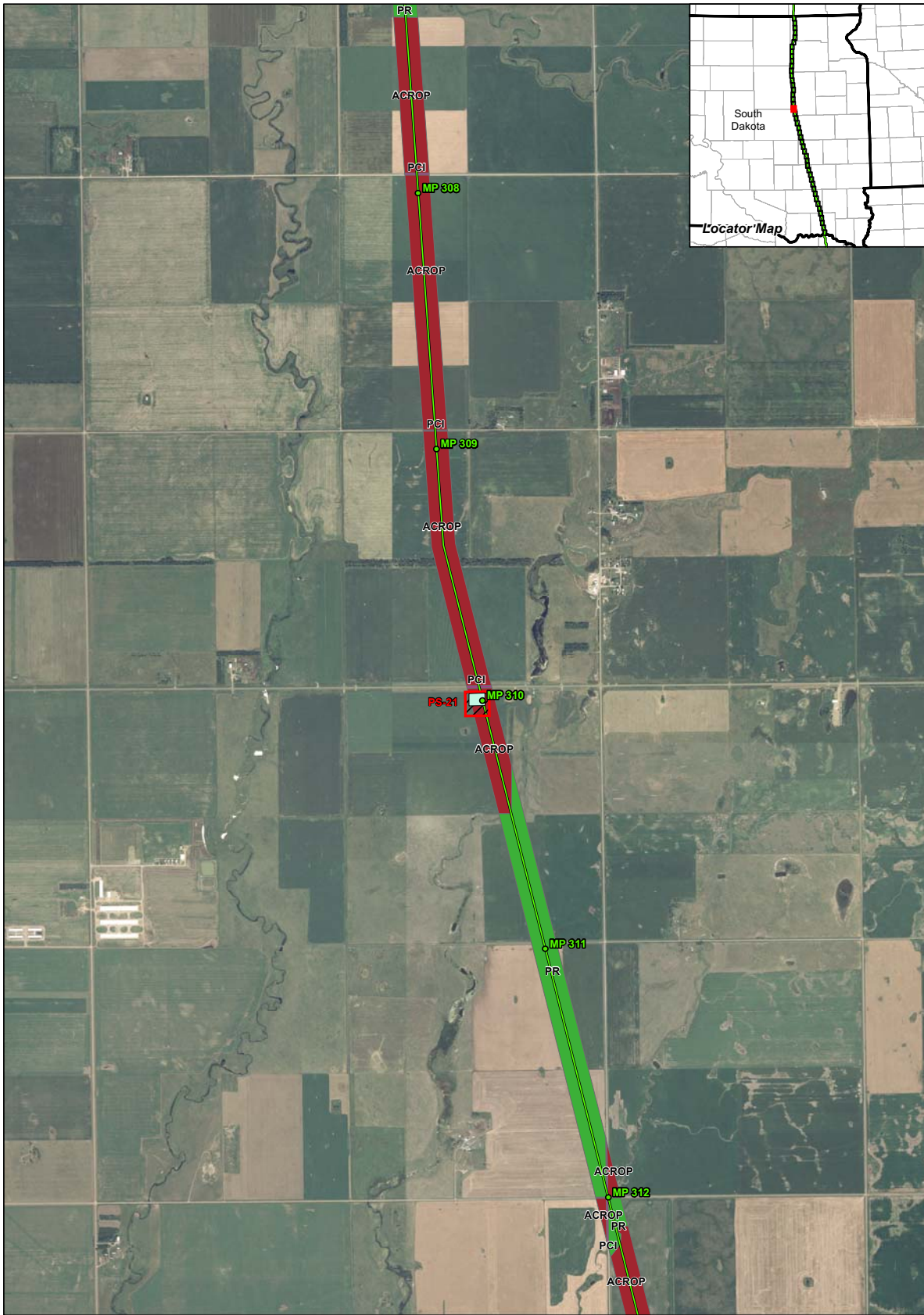
South Dakota Public Utility Commission Application
- Land Use Types -

Map 19 of 46



- ACROP - Row and Non-Row Crop
- HAY - Haylands
- ICROP - Irrigated Crop
- NG - Native Grassland
- PCI - Public, Commercial and Institutional Use
- PR - Pasturelands and Rangelands
- RRES - Rural Residential
- URES - Urban Residential





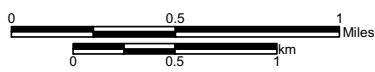
Legend

- Valve Site
- Milepost
- Centerline
- Pump Station - Permanent Disturbance
- Pump Station - Construction Disturbance

Keystone Pipeline Project

South Dakota Public Utility Commission Application
- Land Use Types -

Map 20 of 46



1:24,000

- ACROP - Row and Non-Row Crop
- HAY - Haylands
- ICROP - Irrigated Crop
- NG - Native Grassland
- PCI - Public, Commercial and Institutional Use
- PR - Pasturelands and Rangelands
- RRES - Rural Residential
- URES - Urban Residential

