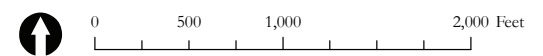


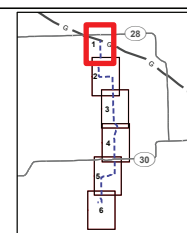
Deer Creek Station Project



Project Features

- Proposed Gas Pipeline Route
- Deer Creek Station
- Northern Border Pipeline
- Soil Boundary

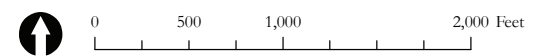
ArC	ARVILLA SANDY LOAM, 6 TO 9 PERCENT SLOPES	PwC	POINSETT SILTY CLAY LOAM, 6 TO 9 PERCENT SLOPES
BcB	BARNES-BUSE LOAMS, 2 TO 6 PERCENT SLOPES	PwA	POINSETT-WAUBAY SILTY CLAY LOAMS, 0 TO 2 PERCENT SLOPES
BcE	BARNES-BUSE LOAMS, 15 TO 25 PERCENT SLOPES	PwB	POINSETT-WAUBAY SILTY CLAY LOAMS, 1 TO 6 PERCENT SLOPES
BgD	BARNES-BUSE-SVEA LOAMS, 2 TO 15 PERCENT SLOPES	RbB	RENSHAW-SIOUX COMPLEX, 2 TO 6 PERCENT SLOPES
BkB	BARNES-SVEA LOAMS, 1 TO 6 PERCENT SLOPES	RtA	RENTILL LOAM
BmC	BARNES-SVEA-BUSE LOAMS, 2 TO 9 PERCENT SLOPES	SbA	SINAI SILTY CLAY, 0 TO 2 PERCENT SLOPES
BsC	BUSE-SINGSAAS COMPLEX, 6 TO 9 PERCENT SLOPES	ScA	SINGSAAS-WAUBAY SILTY CLAY LOAMS, 0 TO 2 PERCENT SLOPES
BtE	BUSE LOAM, 20 TO 40 PERCENT SLOPES	ScB	SINGSAAS-WAUBAY SILTY CLAY LOAMS, 1 TO 6 PERCENT SLOPES
EgB	EGELAND-EMBIEN COMPLEX, 2 TO 6 PERCENT SLOPES	ShA	SINGSAAS-WAUBAY SILTY CLAY LOAMS, 0 TO 2 PERCENT SLOPES
FgB	FORDVILLE-RENSHAW LOAMS, 2 TO 6 PERCENT SLOPES	ShB	SINGSAAS-WAUBAY SILTY CLAY LOAMS, 1 TO 6 PERCENT SLOPES
Hb	HAMERLY-BADGER COMPLEX, 0 TO 2 PERCENT SLOPES	So	SOUTHAM SILTY CLAY LOAM, 0 TO 1 PERCENT SLOPES
Hm	HAMERLY-BADGER COMPLEX	Vc	VALLERS LOAM
HtA	HEGNE-FULDA SILTY CLAY LOAMS	W	WATER
Lr	LAMOURE-RAUVILLE SILTY CLAY LOAMS, CHANNIELED		
Od	OLDHAM SILTY CLAY LOAM		
Pa	PARNELL SILTY CLAY LOAM		
Pc	PARNELL-VALLERS COMPLEX		



EDAW | AECOM



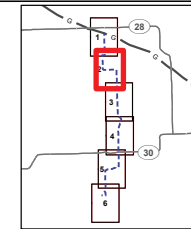
Deer Creek Station Project



Project Features

- Proposed Gas Pipeline Route
- Deer Creek Station
- Northern Border Pipeline
- Soil Boundary

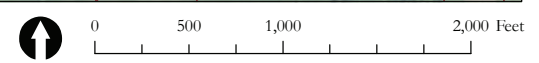
Ba	BADGER SILTY CLAY LOAM, 0 TO 1 PERCENT SLOPES	Pc	PARNELL-WALLERS COMPLEX
BgD	BARNES-BUSE-SVEA LOAMS, 2 TO 15 PERCENT SLOPES	PcC	POINTSETT SILTY CLAY LOAM, 6 TO 9 PERCENT SLOPES
BkB	BARNES-SVEA LOAMS, 1 TO 6 PERCENT SLOPES	PwA	POINTSETT-WAUBAY SILTY CLAY LOAMS, 0 TO 2 PERCENT SLOPES
BmC	BARNES-SVEA-BUSE LOAMS, 2 TO 9 PERCENT SLOPES	PwB	POINTSETT-WAUBAY SILTY CLAY LOAMS, 1 TO 6 PERCENT SLOPES
BoE	BUSE-LANGHEI COMPLEX, 15 TO 40 PERCENT SLOPES	RbB	RENSHAW-SIOUX COMPLEX, 2 TO 6 PERCENT SLOPES
BsC	BUSE-SINGSAAS COMPLEX, 6 TO 9 PERCENT SLOPES	Rw	RENWASH LOAM, 0 TO 2 PERCENT SLOPES
Co	CUBDEN-BADGER SILTY CLAY LOAMS, 0 TO 2 PERCENT SLOPES	SbA	SINAI SILTY CLAY, 0 TO 2 PERCENT SLOPES
FrB	FORDVILLE-RENSHAW LOAMS, 2 TO 6 PERCENT SLOPES	ScA	SINGSAAS-WAUBAY SILTY CLAY LOAMS, 0 TO 2 PERCENT SLOPES
Hb	HAMERLY-BADGER COMPLEX, 0 TO 2 PERCENT SLOPES	ScB	SINGSAAS-WAUBAY SILTY CLAY LOAMS, 1 TO 6 PERCENT SLOPES
Hm	HAMERLY-BADGER COMPLEX	ShA	SINGSAAS-WAUBAY SILTY CLAY LOAMS, 0 TO 2 PERCENT SLOPES
Hm	HEGNE-FULDA SILTY CLAY LOAMS	ShB	SINGSAAS-WAUBAY SILTY CLAY LOAMS, 1 TO 6 PERCENT SLOPES
Lk	LAMOURE-RAUVILLE SILTY CLAY LOAMS, CHANNELLED	So	SOUTHAM SILTY CLAY LOAM, 0 TO 1 PERCENT SLOPES
Lm	LAMOURE SILTY CLAY LOAM, 0 TO 1 PERCENT SLOPES	W	WATER
Lr	LAMOURE-RAUVILLE SILTY CLAY LOAMS, CHANNELLED		
Mt	MCINTOSH-BADGER SILTY CLAY LOAMS, 0 TO 2 PERCENT SLOPES		
Od	OLDHAM SILTY CLAY LOAM		
Pa	PARNELL SILTY CLAY LOAM		



EDAW | AECOM



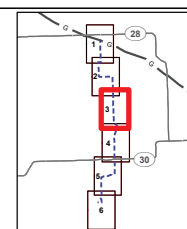
Deer Creek Station Project



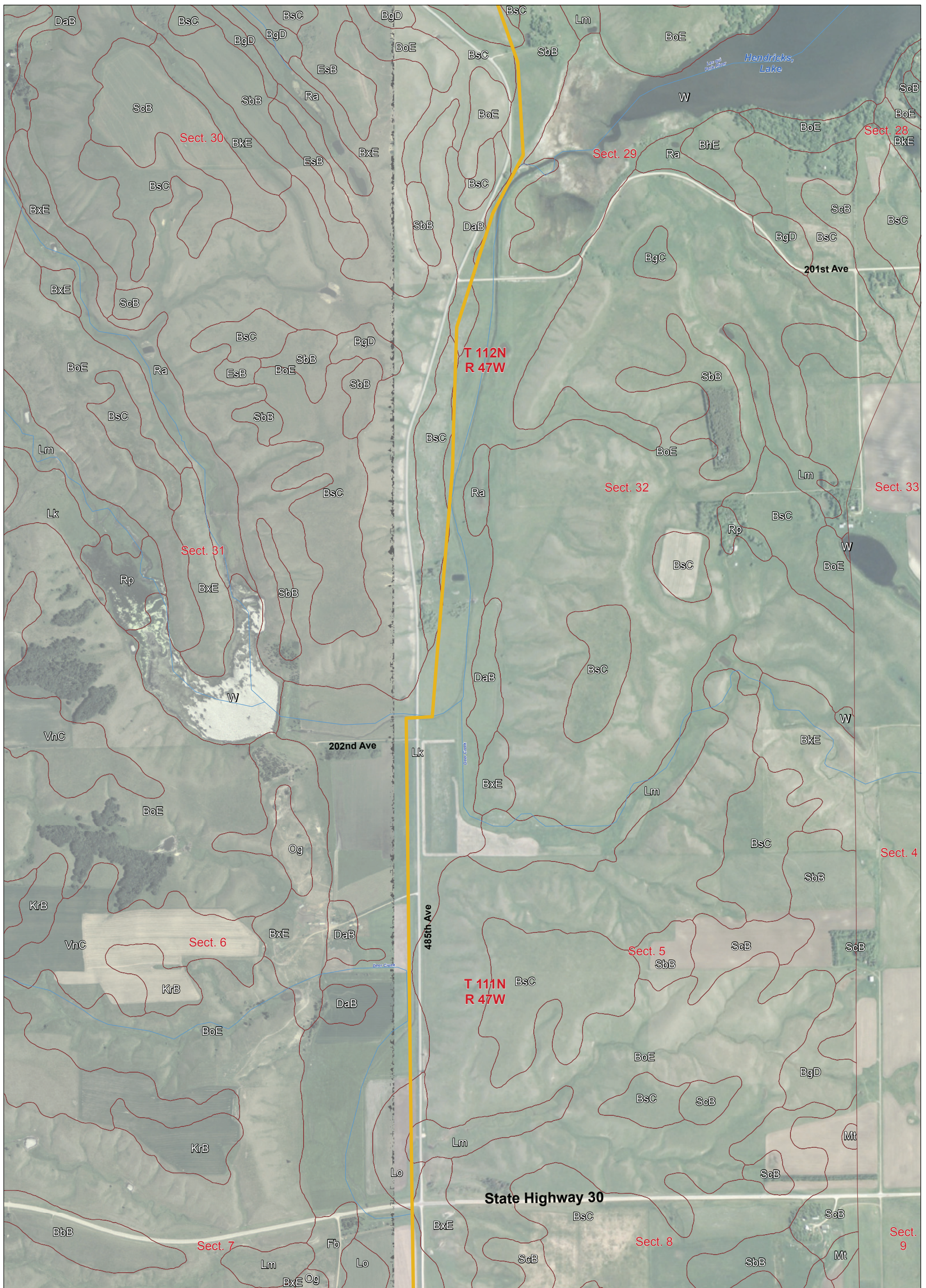
Project Features

- Proposed Gas Pipeline Route
- Deer Creek Station
- Northern Border Pipeline
- Soil Boundary

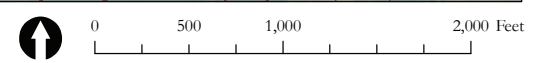
BgD	BARNES-BUSE-SVEA LOAMS, 2 TO 15 PERCENT SLOPES	RaB	RENSHAW-SIOUX COMPLEX, 2 TO 6 PERCENT SLOPES
BgE	BUSE-BARNES LOAMS, 9 TO 40 PERCENT SLOPES, VERY STONY	RaC	RENSHAW-SIOUX COMPLEX, 6 TO 9 PERCENT SLOPES
BkE	BUSE-LAMOURE, CHANNIELED, COMPLEX, 0 TO 40 PERCENT SLOPES	ScB	SINGSAAS-WAUBAY SILTY CLAY LOAMS, 1 TO 6 PERCENT SLOPES
BsC	BUSE-LANGHEI COMPLEX, 15 TO 40 PERCENT SLOPES	Sha	SINGSAAS-WAUBAY SILTY CLAY LOAMS, 0 TO 2 PERCENT SLOPES
BsE	BUSE-SINGSAAS COMPLEX, 6 TO 9 PERCENT SLOPES	Snb	SINGSAAS-WAUBAY SILTY CLAY LOAMS, 1 TO 6 PERCENT SLOPES
BxE	BUSE-SIOUX COMPLEX, 9 TO 40 PERCENT SLOPES	W	WATER
DaB	DARNEN LOAM, 2 TO 6 PERCENT SLOPES		
EsB	ESTELLINE SILT LOAM, 2 TO 6 PERCENT SLOPES		
Hb	HAMERLY-BADGER COMPLEX, 0 TO 2 PERCENT SLOPES		
Lk	LAMOURE SILTY CLAY LOAM, 0 TO 1 PERCENT SLOPES		
Lm	LAMOURE-RAUVILLE SILTY CLAY LOAMS, CHANNIELED		
Mt	MCINTOSH-LAMOURE SILTY CLAY LOAMS, 0 TO 2 PERCENT SLOPES		
Mu	MCINTOSH-BADGER SILTY CLAY LOAMS, 0 TO 2 PERCENT SLOPES		
Od	OLDHAM SILTY CLAY LOAM		
Pa	PARNELL SILTY CLAY LOAM		
Ra	RAUVILLE SILTY CLAY LOAM, 0 TO 1 PERCENT SLOPES		



EDAW | AECOM



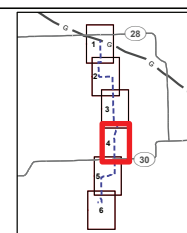
Deer Creek Station Project



Project Features

- Proposed Gas Pipeline Route
- Deer Creek Station
- Northern Border Pipeline
- Soil Boundary

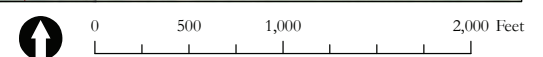
BbB	BARNES CLAY LOAM, 2 TO 6 PERCENT SLOPES	Pa	PARNELL SILTY CLAY LOAM, 0 TO 1 PERCENT SLOPES
BgC	BUSE-BARNES LOAMS, 6 TO 9 PERCENT SLOPES	Ra	RAUVILLE SILTY CLAY LOAM, 0 TO 1 PERCENT SLOPES
BgD	BARNES-BUSE-SVEA LOAMS, 2 TO 15 PERCENT SLOPES	Rp	RAUVILLE SILTY CLAY LOAM, PONDED
BhE	BUSE-BARNES LOAMS, 9 TO 40 PERCENT SLOPES, VERY STONY	ScB	SINGSAAS-WAUBAY SILTY CLAY LOAMS, 1 TO 6 PERCENT SLOPES
BKE	BUSE-LAMOURE, CHANNIELED, COMPLEX, 0 TO 40 PERCENT SLOPES	VnC	VIENNA-BUSE COMPLEX, 6 TO 9 PERCENT SLOPES
BxC	BUSE-LANGHEI COMPLEX, 15 TO 40 PERCENT SLOPES	W	WATER
BsC	BUSE-SINGSAAS COMPLEX, 6 TO 9 PERCENT SLOPES		
BxE	BUSE-SIOUX COMPLEX, 9 TO 40 PERCENT SLOPES		
DaB	DARNEN LOAM, 2 TO 6 PERCENT SLOPES		
EsB	ESTELLINE SILT LOAM, 2 TO 6 PERCENT SLOPES		
Fb	FORDTOWN LOAM, 0 TO 2 PERCENT SLOPES		
KrB	KRANZBURG-BROOKINGS SILTY CLAY LOAMS, 1 TO 6 PERCENT SLOPES		
Lk	LAMOURE SILTY CLAY LOAM, 0 TO 1 PERCENT SLOPES		
Lm	LAMOURE-RAUVILLE SILTY CLAY LOAMS, CHANNIELED		
Lo	LOWE LOAM, 0 TO 1 PERCENT SLOPES		
Mt	MCINTOSH-HADGER SILTY CLAY LOAMS, 0 TO 2 PERCENT SLOPES		
Og	ORTHENTS, GRAVELLY		



EDAW | AECOM



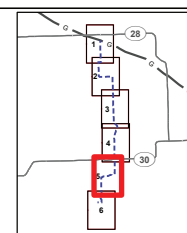
Deer Creek Station Project



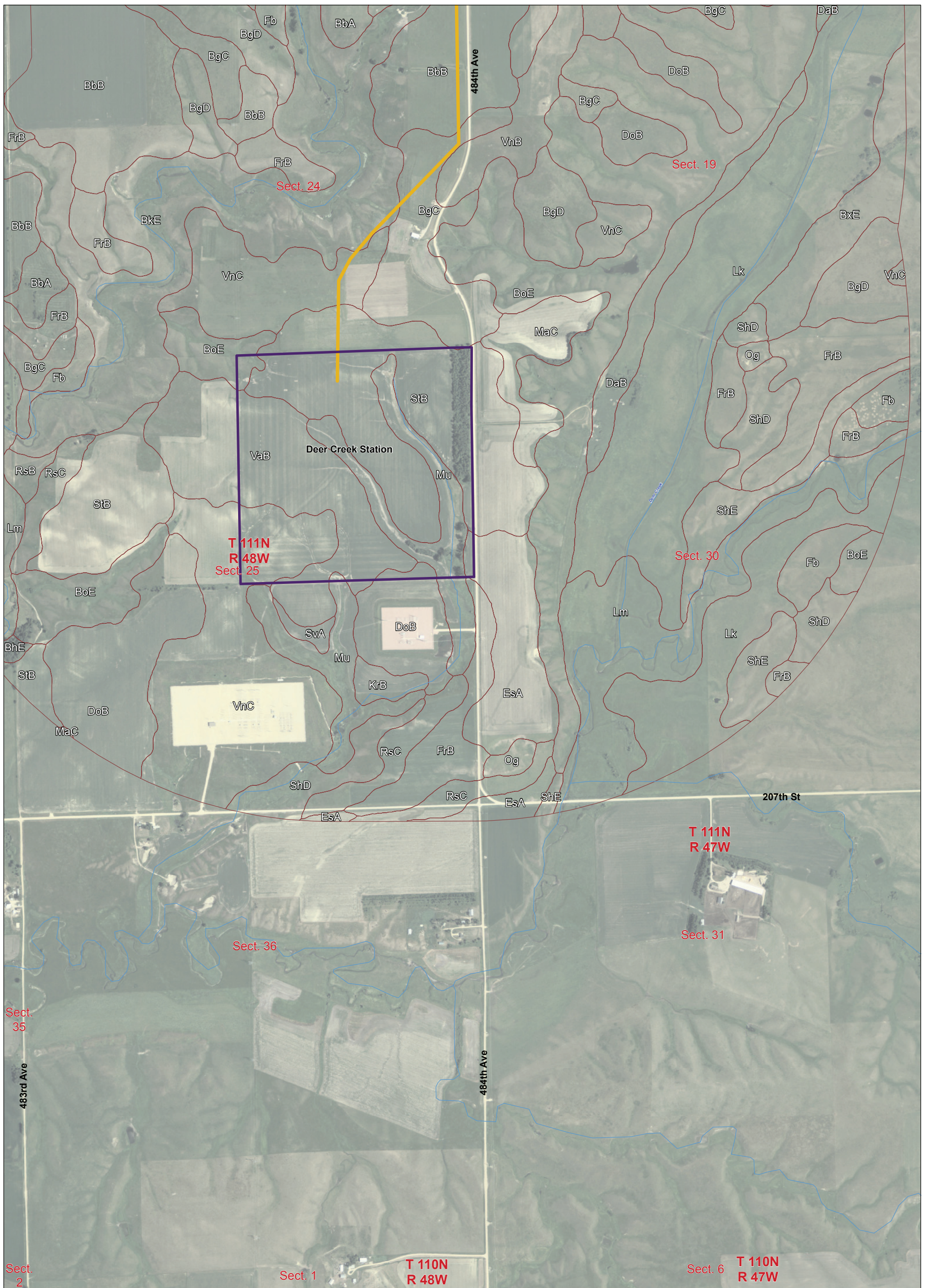
Project Features

- Proposed Gas Pipeline Route
- Deer Creek Station
- Northern Border Pipeline
- Soil Boundary

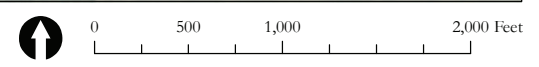
BbA	BARNES CLAY LOAM, 0 TO 2 PERCENT SLOPES	Ls	LOWE LOAM, 0 TO 1 PERCENT SLOPES
BbB	BARNES CLAY LOAM, 2 TO 6 PERCENT SLOPES	Og	ORTENTS, GRAVELLY
BgC	BUSE-BARNES LOAMS, 6 TO 9 PERCENT SLOPES	ScB	SINGSAAS-WAUBAY SILTY CLAY LOAMS, 1 TO 6 PERCENT SLOPES
BgD	BARNES-BUSE-SVEA LOAMS, 2 TO 15 PERCENT SLOPES	VnB	VIENNA-BUSE COMPLEX, 2 TO 9 PERCENT SLOPES
BNE	BUSE-BARNES LOAMS, 9 TO 40 PERCENT SLOPES, VERY STONY	VnC	VIENNA-BUSE COMPLEX, 6 TO 9 PERCENT SLOPES
BKE	BUSE-LAMOURE, CHANNIELED, COMPLEX, 0 TO 40 PERCENT SLOPES	W	WATER
BoE	BUSE-LANGHEI COMPLEX, 15 TO 40 PERCENT SLOPES		
BsC	BUSE-SINGSAAS COMPLEX, 6 TO 9 PERCENT SLOPES		
BsE	BUSE-SIOUX COMPLEX, 9 TO 40 PERCENT SLOPES		
DaB	DARNEN LOAM, 2 TO 6 PERCENT SLOPES		
DoB	DOLAND LOAM, 2 TO 6 PERCENT SLOPES		
Fb	FORDTOWN LOAM, 0 TO 2 PERCENT SLOPES		
FrB	FORDVILLE-RENSHAW LOAMS, 2 TO 6 PERCENT SLOPES		
Hb	HAMERLY-BADGER COMPLEX, 0 TO 2 PERCENT SLOPES		
KrB	KRANZBURG-BROOKINGS SILTY CLAY LOAMS, 1 TO 6 PERCENT SLOPES		
Lc	LA PRAIRIE LOAM, 0 TO 2 PERCENT SLOPES, RARELY FLOODED		
Lm	LAMOURE-RAUVILLE SILTY CLAY LOAMS, CHANNIELED		



EDAW | AECOM



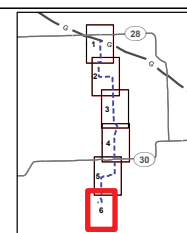
Deer Creek Station Project



Project Features

- Proposed Gas Pipeline Route
- Deer Creek Station
- Northern Border Pipeline
- Soil Boundary

BbA	BARNES CLAY LOAM, 0 TO 2 PERCENT SLOPES	RbB	SINGSAAS-WAUBAY SILTY CLAY LOAMS, 1 TO 6 PERCENT SLOPES
BbB	BARNES CLAY LOAM, 2 TO 6 PERCENT SLOPES	RcC	RENSHAW-SIOUX COMPLEX, 6 TO 9 PERCENT SLOPES
BgC	BUSE-BARNES LOAMS, 6 TO 9 PERCENT SLOPES	ShD	SIOUX-RENSHAW COMPLEX, 9 TO 15 PERCENT SLOPES
BgD	BARNES-BUSE-SVEA LOAMS, 2 TO 15 PERCENT SLOPES	ShE	SIOUX-RENSHAW COMPLEX, 15 TO 40 PERCENT SLOPES
BhE	BUSE-BARNES LOAMS, 9 TO 40 PERCENT SLOPES, VERY STONY	SbB	STRAYHOSS-MADDOCK COMPLEX, 2 TO 6 PERCENT SLOPES
BbE	BUSE-LANGHEI COMPLEX, 15 TO 40 PERCENT SLOPES	SvA	SVEA LOAM, 0 TO 2 PERCENT SLOPES
BsC	BUSE-SINGSAAS COMPLEX, 6 TO 9 PERCENT SLOPES	VaB	STRAYHOSS-MADDOCK COMPLEX, 2 TO 6 PERCENT SLOPES
BxE	BUSE-SIOUX COMPLEX, 9 TO 40 PERCENT SLOPES	VhB	VIENNA-BUSE COMPLEX, 2 TO 6 PERCENT SLOPES
DaB	DARNEN LOAM, 2 TO 6 PERCENT SLOPES	VnC	VIENNA-BUSE COMPLEX, 6 TO 9 PERCENT SLOPES
DoB	DOLAND LOAM, 2 TO 6 PERCENT SLOPES		
EsA	ESTELLINE SILT LOAM, 0 TO 2 PERCENT SLOPES		
Fb	FORDTOWN LOAM, 0 TO 2 PERCENT SLOPES		
FrB	FORDVILLE-RENSHAW LOAMS, 2 TO 6 PERCENT SLOPES		
KrB	KRANZBURG-BROOKINGS SILTY CLAY LOAMS, 1 TO 6 PERCENT SLOPES		
Lk	LAMOURE SILTY CLAY LOAM, 0 TO 1 PERCENT SLOPES		
Lm	LAMOURE-RAUVILLE SILTY CLAY LOAMS, CHANNIELED		
Og	ORTHENTS, GRAVELLY		



EDAW | AECOM