

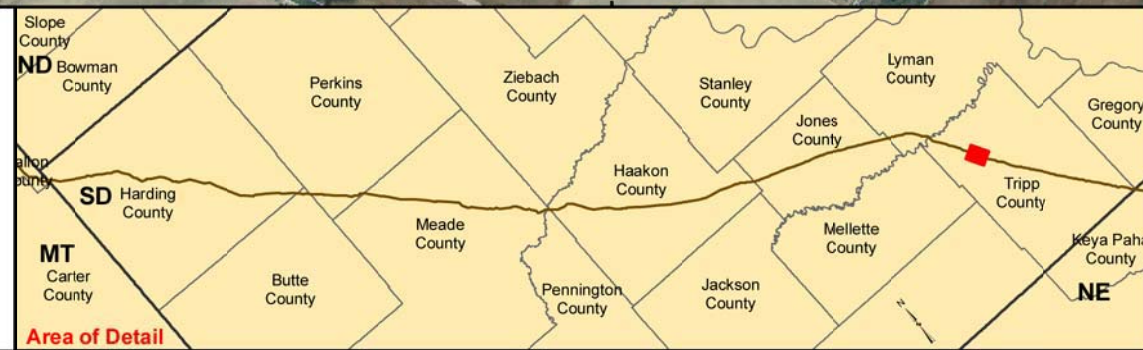


Legend

- Milepost
- Steele City Segment
- Pump Station
- County Line
- Section Line

Landuse

- (a) Land used primarily for row and non-row crops in rotation
- (b) Irrigated lands
- (c) Pasturelands and Rangelands
- (d) Hayland
- (e) Undisturbed native grasslands
- (f) Existing and potential extractive non-renewable resources
- (g) Other major industries
- (h) Rural residences and farmsteads, family farms, and ranches
- (i) Residential
- (j) Public, commercial, and institutional use
- (k) Municipal water supply and water sources for organized rural water systems - Confidential Information
- (l) Noise sensitive land uses



TransCanada
In business to deliver

ConocoPhillips

0 0.125 0.25 0.5 0.75 1 Miles

Scale 1:24,000

0 0.25 0.5 1 1.5 2 Kilometers

**SOUTH DAKOTA STUDY AREA
KEYSTONE XL PROJECT**

**MAPBOOK 1
LANDUSE / LANDCOVER**

MAP 50 OF 58

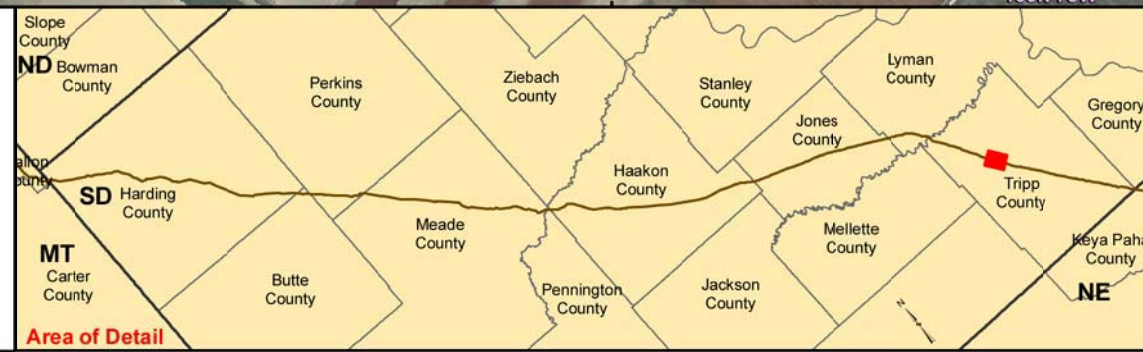


Legend

- Milepost
- Steele City Segment
- Pump Station
- County Line
- Section Line

Landuse

- (a) Land used primarily for row and non-row crops in rotation
- (b) Irrigated lands
- (c) Pasturelands and Rangelands
- (d) Hayland
- (e) Undisturbed native grasslands
- (f) Existing and potential extractive non-renewable resources
- (g) Other major industries
- (h) Rural residences and farmsteads, family farms, and ranches
- (i) Residential
- (j) Public, commercial, and institutional use
- (k) Municipal water supply and water sources for organized rural water systems - Confidential Information
- (l) Noise sensitive land uses



TransCanada
In business to deliver

ConocoPhillips

0 0.125 0.25 Miles 0.5 0.75 1

Scale 1:24,000

0 0.25 0.5 Kilometers 1 1.5 2

**SOUTH DAKOTA STUDY AREA
KEYSTONE XL PROJECT**

**MAPBOOK 1
LANDUSE / LANDCOVER**

MAP 51 OF 58

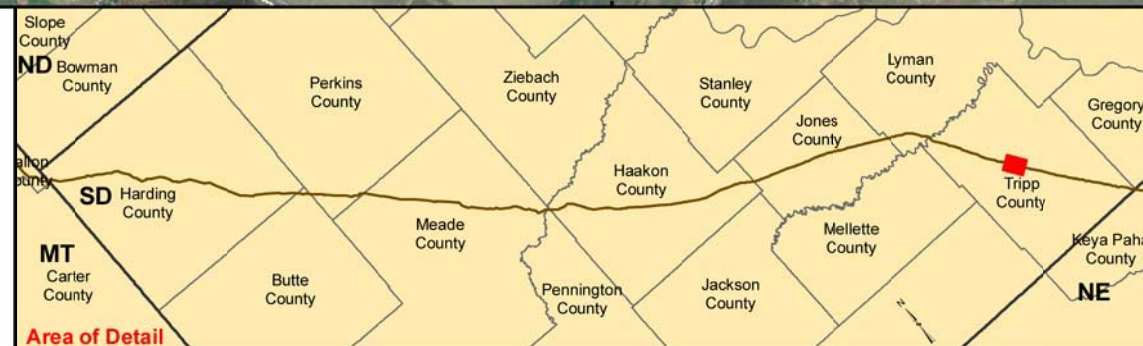


Legend

- Milepost
- Steele City Segment
- ⊠ Pump Station
- ▭ County Line
- ▭ Section Line

Landuse

- (a) Land used primarily for row and non-row crops in rotation
- (b) Irrigated lands
- (c) Pasturelands and Rangelands
- (d) Hayland
- (e) Undisturbed native grasslands
- (f) Existing and potential extractive non-renewable resources
- (g) Other major industries
- (h) Rural residences and farmsteads, family farms, and ranches
- (i) Residential
- (j) Public, commercial, and institutional use
- (k) Municipal water supply and water sources for organized rural water systems - Confidential Information
- (l) Noise sensitive land uses



TransCanada
In business to deliver

ConocoPhillips

0 0.125 0.25 0.5 0.75 1 Miles

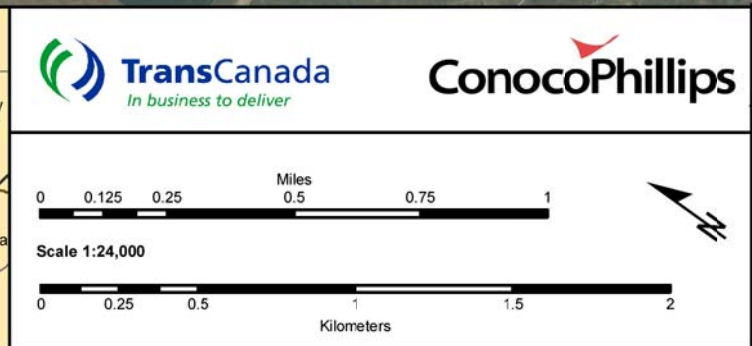
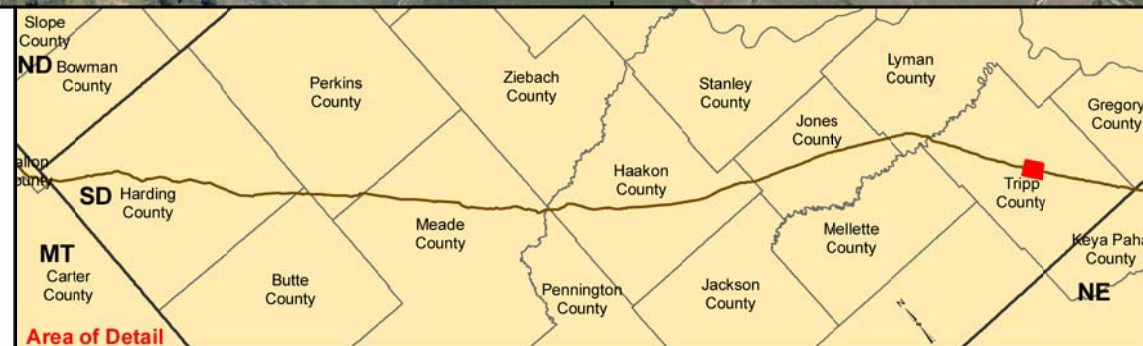
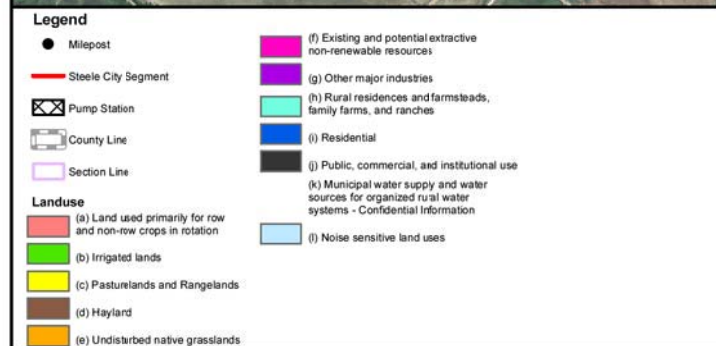
Scale 1:24,000

0 0.25 0.5 1 1.5 2 Kilometers

**SOUTH DAKOTA STUDY AREA
KEYSTONE XL PROJECT**

**MAPBOOK 1
LANDUSE / LANDCOVER**

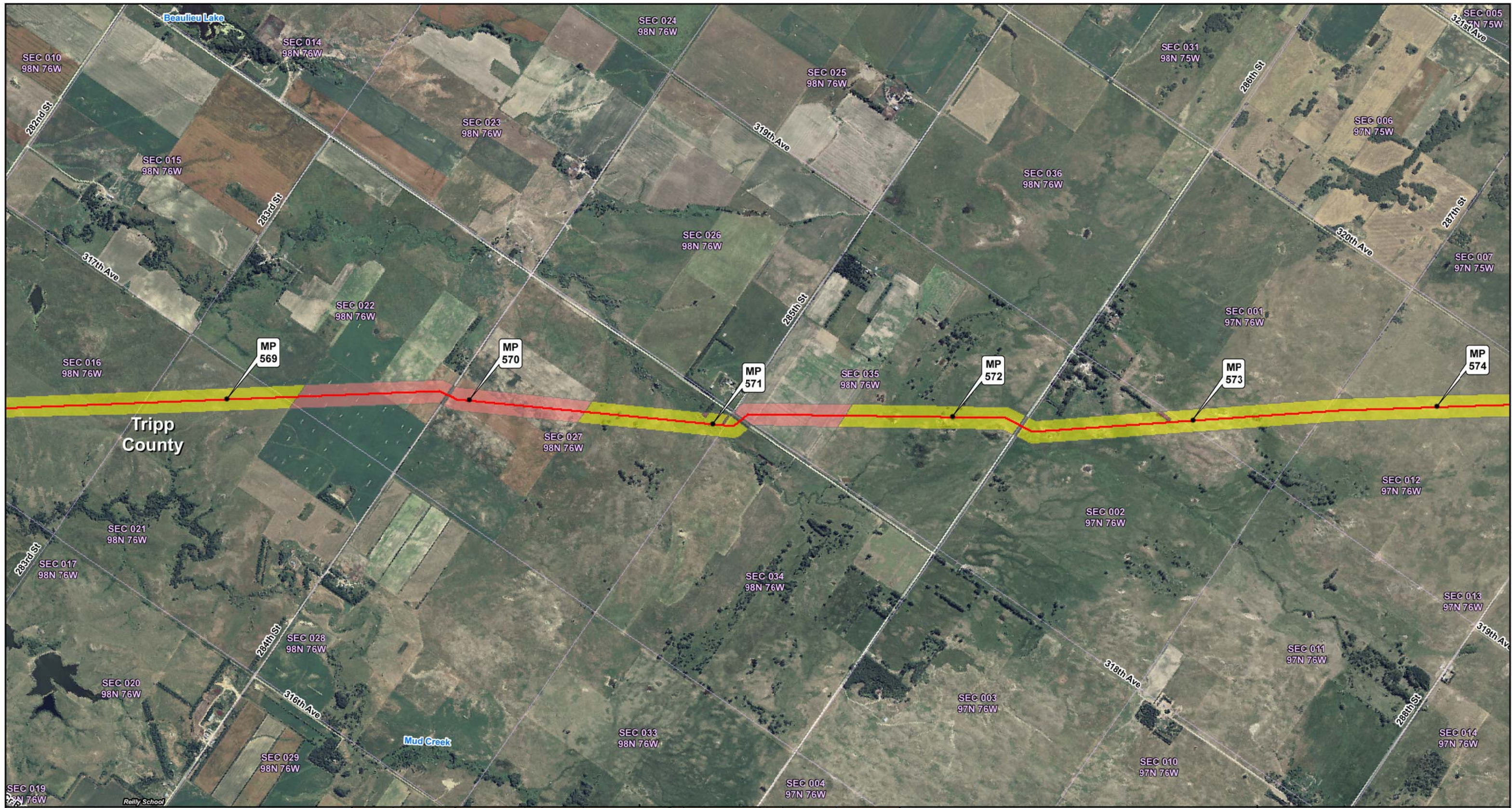
MAP 52 OF 58



SOUTH DAKOTA STUDY AREA
KEYSTONE XL PROJECT

MAPBOOK 1
LANDUSE / LANDCOVER

MAP 53 OF 58



Legend

- Milepost
- Steele City Segment
- ⊠ Pump Station
- County Line
- Section Line

Landuse

- (a) Land used primarily for row and non-row crops in rotation
- (b) Irrigated lands
- (c) Pasturelands and Rangelands
- (d) Hayland
- (e) Undisturbed native grasslands
- (f) Existing and potential extractive non-renewable resources
- (g) Other major industries
- (h) Rural residences and farmsteads, family farms, and ranches
- (i) Residential
- (j) Public, commercial, and institutional use
- (k) Municipal water supply and water sources for organized rural water systems - Confidential Information
- (l) Noise sensitive land uses



TransCanada
In business to deliver

ConocoPhillips

0 0.125 0.25 0.5 0.75 1 Miles

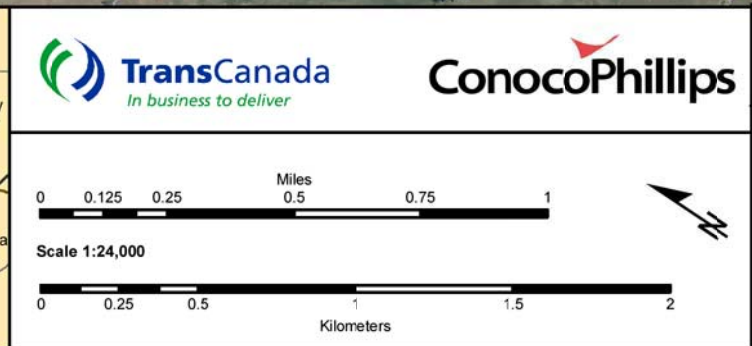
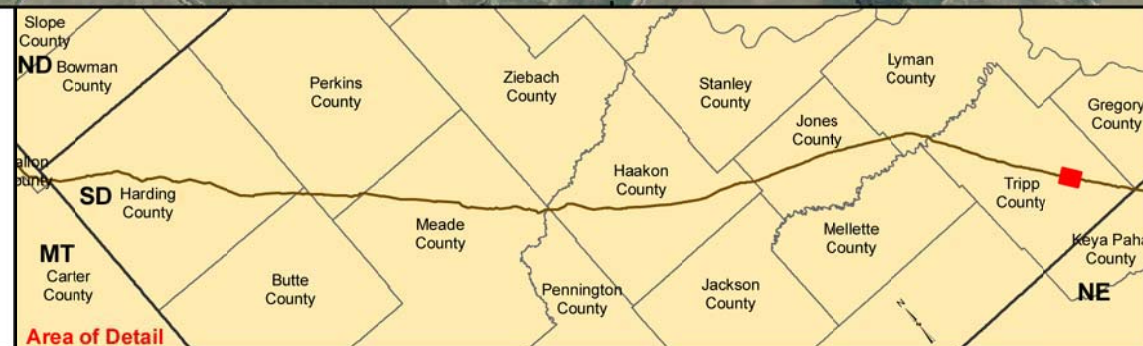
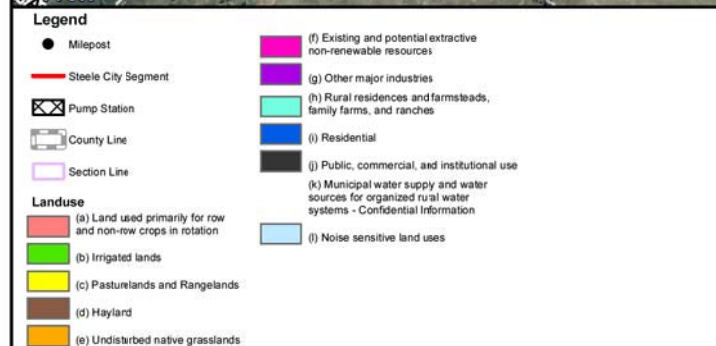
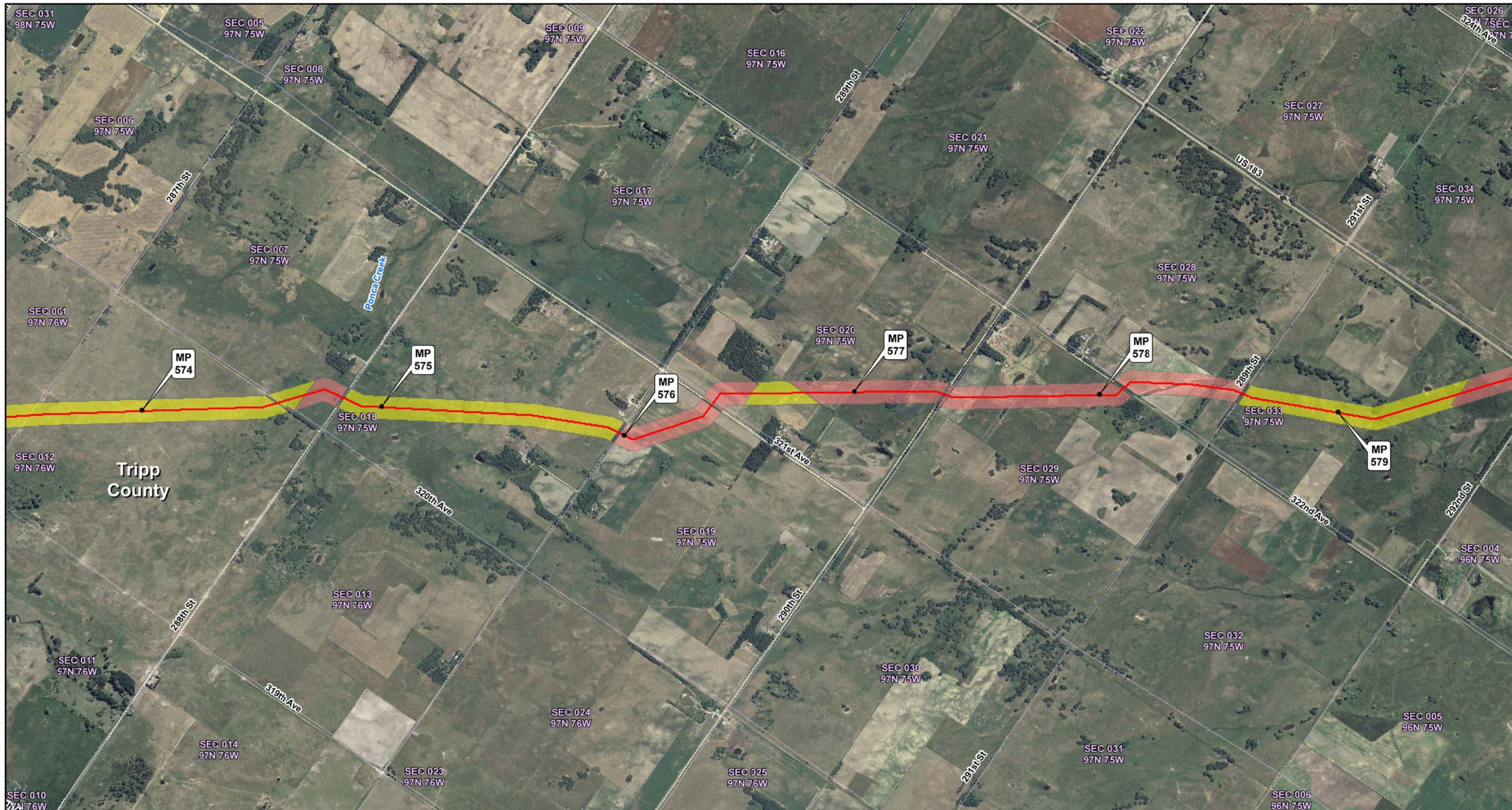
Scale 1:24,000

0 0.25 0.5 1 1.5 2 Kilometers

**SOUTH DAKOTA STUDY AREA
KEYSTONE XL PROJECT**

**MAPBOOK 1
LANDUSE / LANDCOVER**

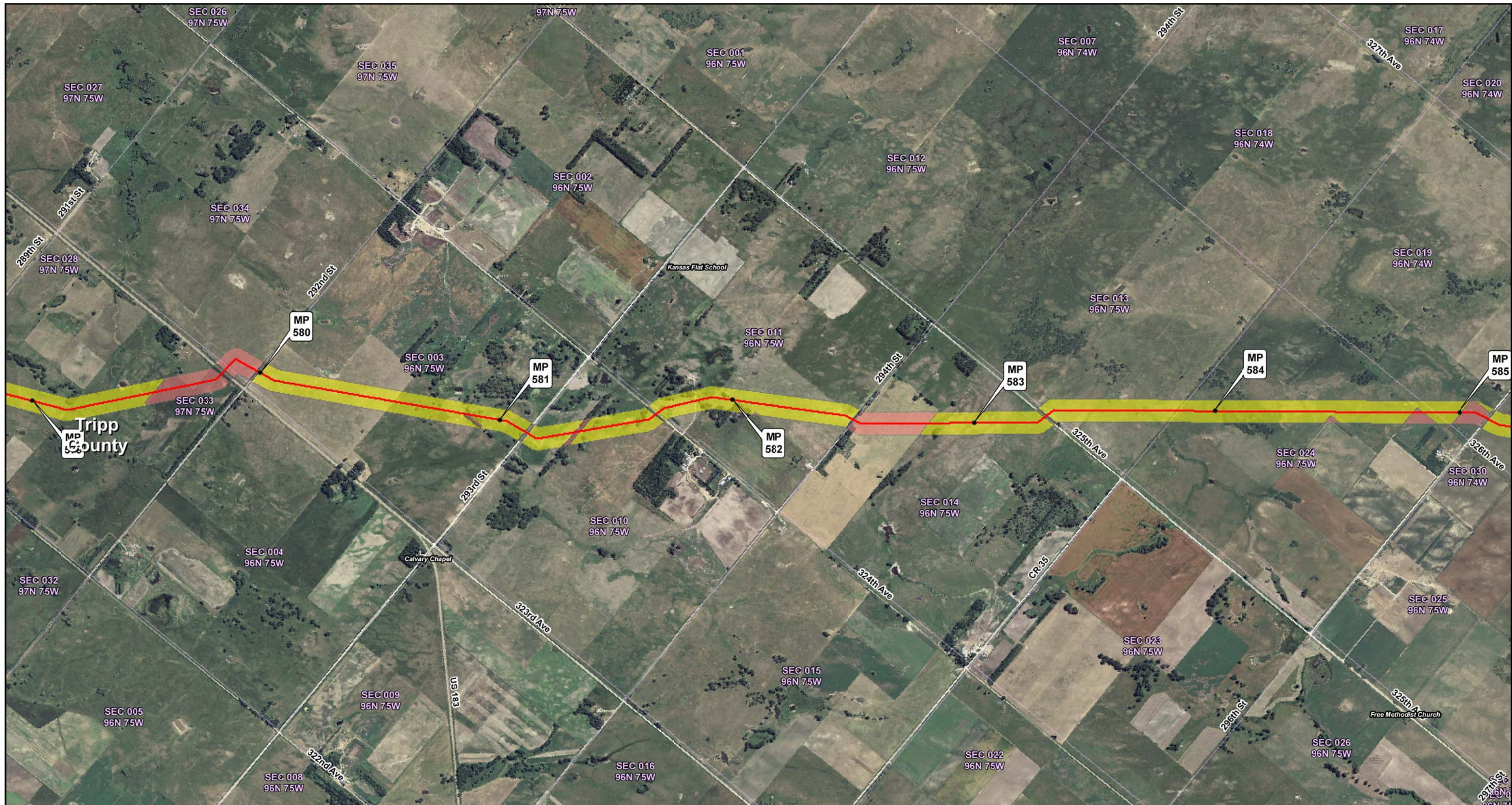
MAP 54 OF 58



**SOUTH DAKOTA STUDY AREA
KEYSTONE XL PROJECT**

**MAPBOOK 1
LANDUSE / LANDCOVER**

MAP 55 OF 58

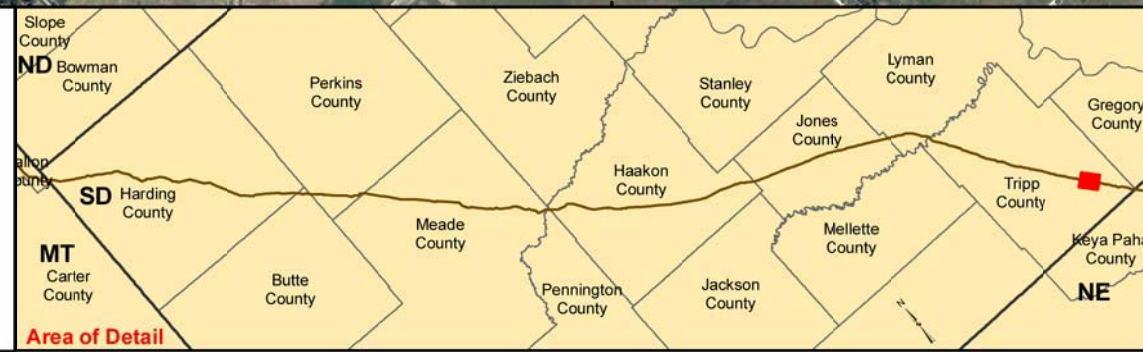


Legend

- Milepost
- Steele City Segment
- Pump Station
- County Line
- Section Line

Landuse

- (a) Land used primarily for row and non-row crops in rotation
- (b) Irrigated lands
- (c) Pasturelands and Rangelands
- (d) Hayland
- (e) Undisturbed native grasslands
- (f) Existing and potential extractive non-renewable resources
- (g) Other major industries
- (h) Rural residences and farmsteads, family farms, and ranches
- (i) Residential
- (j) Public, commercial, and institutional use
- (k) Municipal water supply and water sources for organized rural water systems - Confidential Information
- (l) Noise sensitive land uses



TransCanada
In business to deliver

ConocoPhillips

0 0.125 0.25 0.5 0.75 1 Miles

Scale 1:24,000

0 0.25 0.5 1 1.5 2 Kilometers

**SOUTH DAKOTA STUDY AREA
KEYSTONE XL PROJECT**

**MAPBOOK 1
LANDUSE / LANDCOVER**

MAP 56 OF 58

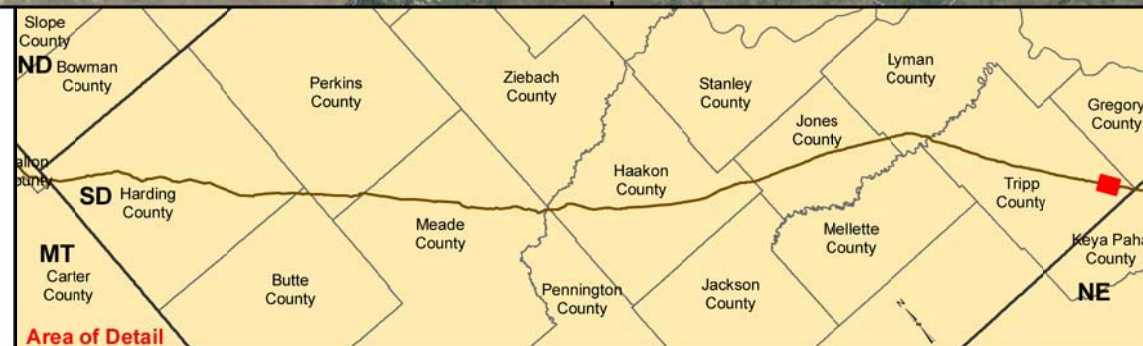


Legend

- Milepost
- Steele City Segment
- ⊠ Pump Station
- ▭ County Line
- ▭ Section Line

Landuse

- (a) Land used primarily for row and non-row crops in rotation
- (b) Irrigated lands
- (c) Pasturelands and Rangelands
- (d) Hayland
- (e) Undisturbed native grasslands
- (f) Existing and potential extractive non-renewable resources
- (g) Other major industries
- (h) Rural residences and farmsteads, family farms, and ranches
- (i) Residential
- (j) Public, commercial, and institutional use
- (k) Municipal water supply and water sources for organized rural water systems - Confidential Information
- (l) Noise sensitive land uses



TransCanada
In business to deliver

ConocoPhillips

0 0.125 0.25 0.5 0.75 1 Miles

Scale 1:24,000

0 0.25 0.5 1 1.5 2 Kilometers

**SOUTH DAKOTA STUDY AREA
KEYSTONE XL PROJECT**

**MAPBOOK 1
LANDUSE / LANDCOVER**

MAP 57 OF 58

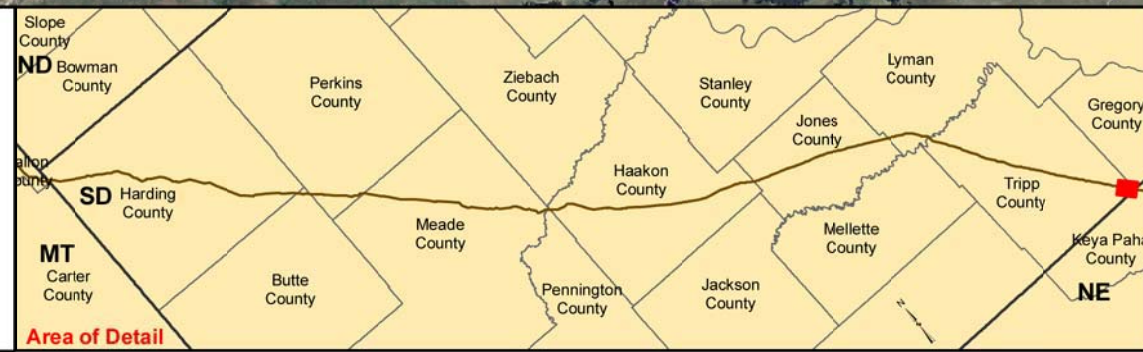


Legend

- Milepost
- Steele City Segment
- Pump Station
- County Line
- Section Line

Landuse

- (a) Land used primarily for row and non-row crops in rotation
- (b) Irrigated lands
- (c) Pasturelands and Rangelands
- (d) Hayland
- (e) Undisturbed native grasslands
- (f) Existing and potential extractive non-renewable resources
- (g) Other major industries
- (h) Rural residences and farmsteads, family farms, and ranches
- (i) Residential
- (j) Public, commercial, and institutional use
- (k) Municipal water supply and water sources for organized rural water systems - Confidential Information
- (l) Noise sensitive land uses



TransCanada
In business to deliver

ConocoPhillips

Scale 1:24,000

Miles: 0, 0.125, 0.25, 0.5, 0.75, 1

Kilometers: 0, 0.25, 0.5, 1, 1.5, 2

**SOUTH DAKOTA STUDY AREA
KEYSTONE XL PROJECT**

**MAPBOOK 1
LANDUSE / LANDCOVER**

MAP 58 OF 58