



**Legend**

- Milepost
- Steele City Segment
- ⊠ Pump Station
- ▭ County Line
- ▭ Section Line

**Landuse**

- (a) Land used primarily for row and non-row crops in rotation
- (b) Irrigated lands
- (c) Pasturelands and Rangelands
- (d) Hayland
- (e) Undisturbed native grasslands
- (f) Existing and potential extractive non-renewable resources
- (g) Other major industries
- (h) Rural residences and farms/leads, family farms, and ranches
- (i) Residential
- (j) Public, commercial, and institutional use
- (k) Municipal water supply and water sources for organized rural water systems - Confidential Information
- (l) Noise sensitive land uses



**TransCanada**  
*In business to deliver*

**ConocoPhillips**

0 0.125 0.25 0.5 0.75 1 Miles

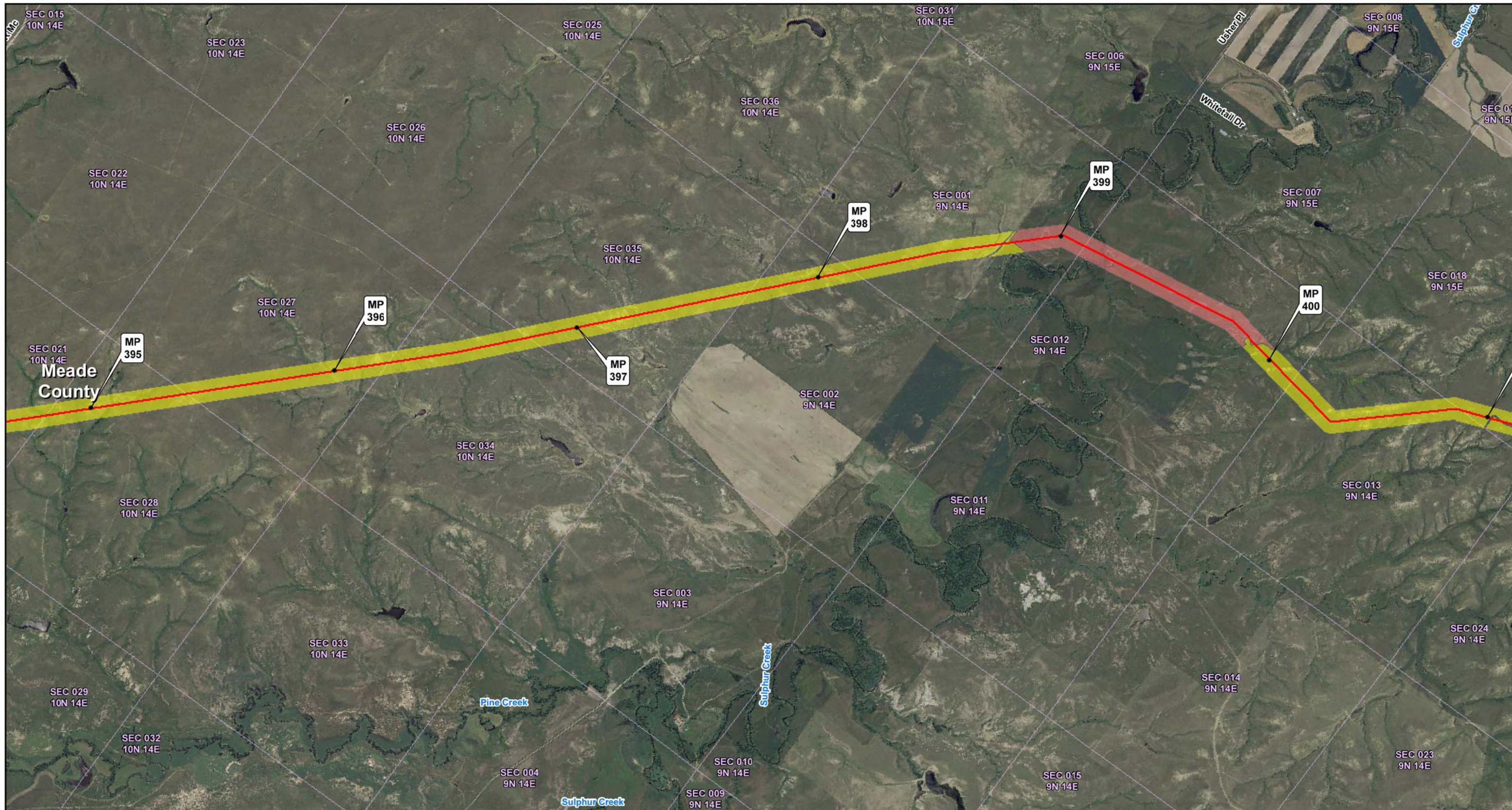
Scale 1:24,000

0 0.25 0.5 1 1.5 2 Kilometers

**SOUTH DAKOTA STUDY AREA  
KEYSTONE XL PROJECT**

**MAPBOOK 1  
LANDUSE / LANDCOVER**

**MAP 21 OF 58**



**Legend**

- Milepost
- Steele City Segment
- Pump Station
- County Line
- Section Line

**Landuse**

- (a) Land used primarily for row and non-row crops in rotation
- (b) Irrigated lands
- (c) Pasturelands and Rangelands
- (d) Hayland
- (e) Undisturbed native grasslands
- (f) Existing and potential extractive non-renewable resources
- (g) Other major industries
- (h) Rural residences and farms/leads, family farms, and ranches
- (i) Residential
- (j) Public, commercial, and institutional use
- (k) Municipal water supply and water sources for organized rural water systems - Confidential Information
- (l) Noise sensitive land uses



**TransCanada**  
*In business to deliver*

**ConocoPhillips**

0 0.125 0.25 0.5 0.75 1 Miles

Scale 1:24,000

0 0.25 0.5 1 1.5 2 Kilometers

**SOUTH DAKOTA STUDY AREA  
KEYSTONE XL PROJECT**

**MAPBOOK 1  
LANDUSE / LANDCOVER**

**MAP 22 OF 58**



**Legend**

- Milepost
- Steele City Segment
- Pump Station
- County Line
- Section Line

**Landuse**

- (a) Land used primarily for row and non-row crops in rotation
- (b) Irrigated lands
- (c) Pasturelands and Rangelands
- (d) Hayland
- (e) Undisturbed native grasslands
- (f) Existing and potential extractive non-renewable resources
- (g) Other major industries
- (h) Rural residences and farms/leads, family farms, and ranches
- (i) Residential
- (j) Public, commercial, and institutional use
- (k) Municipal water supply and water sources for organized rural water systems - Confidential Information
- (l) Noise sensitive land uses



**TransCanada**  
*In business to deliver*

**ConocoPhillips**

0 0.125 0.25 0.5 0.75 1 Miles

Scale 1:24,000

0 0.25 0.5 1 1.5 2 Kilometers

**SOUTH DAKOTA STUDY AREA  
KEYSTONE XL PROJECT**

**MAPBOOK 1  
LANDUSE / LANDCOVER**

**MAP 23 OF 58**



**Legend**

- Milepost
- Steele City Segment
- ⊠ Pump Station
- ▭ County Line
- ▭ Section Line

**Landuse**

- (a) Land used primarily for row and non-row crops in rotation
- (b) Irrigated lands
- (c) Pasturelands and Rangelands
- (d) Hayland
- (e) Undisturbed native grasslands
- (f) Existing and potential extractive non-renewable resources
- (g) Other major industries
- (h) Rural residences and farms/leads, family farms, and ranches
- (i) Residential
- (j) Public, commercial, and institutional use
- (k) Municipal water supply and water sources for organized rural water systems - Confidential Information
- (l) Noise sensitive land uses



**Scale 1:24,000**

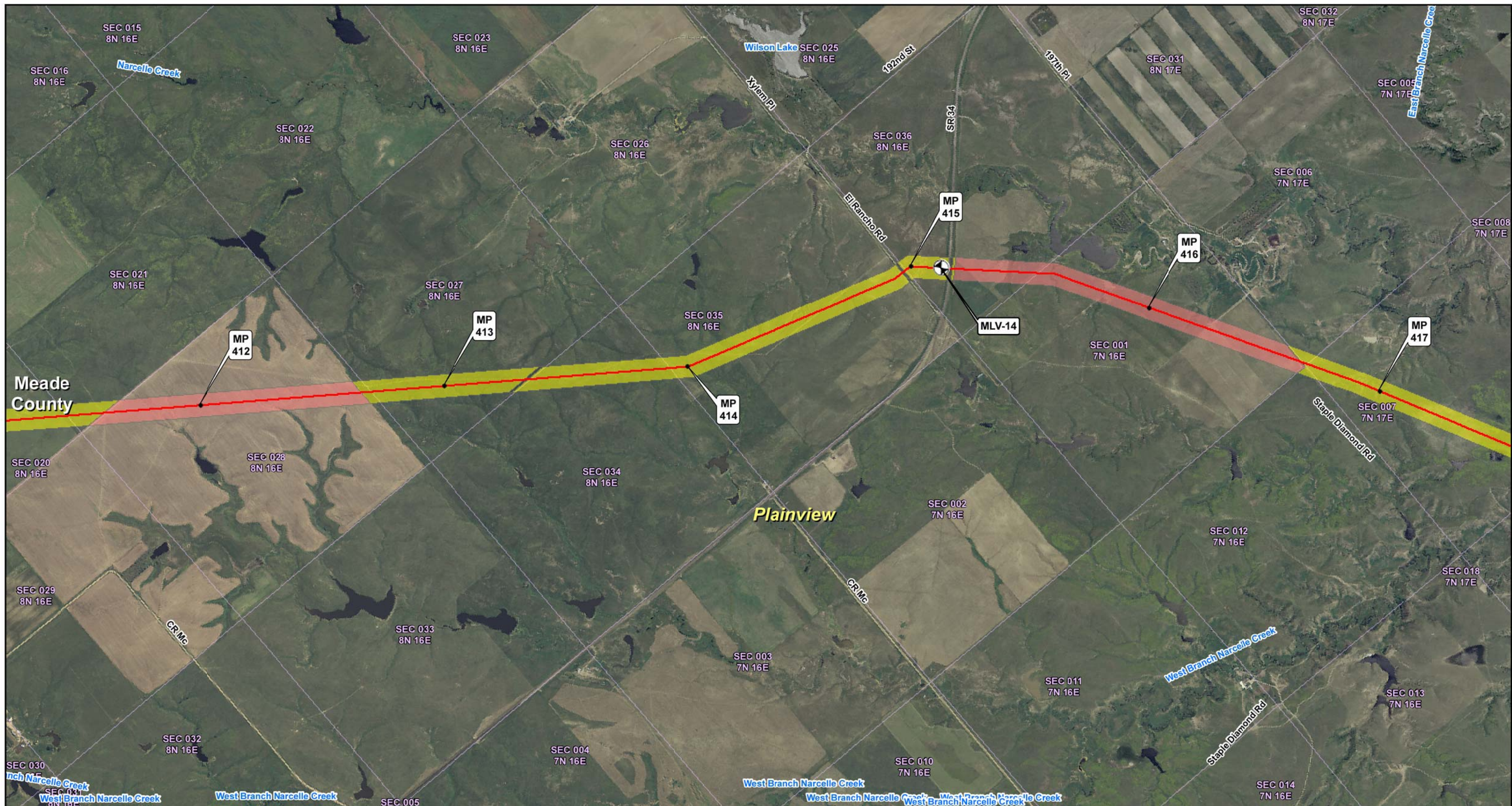
Miles: 0, 0.125, 0.25, 0.5, 0.75, 1

Kilometers: 0, 0.25, 0.5, 1, 1.5, 2

**SOUTH DAKOTA STUDY AREA  
KEYSTONE XL PROJECT**

**MAPBOOK 1  
LANDUSE / LANDCOVER**

**MAP 24 OF 58**

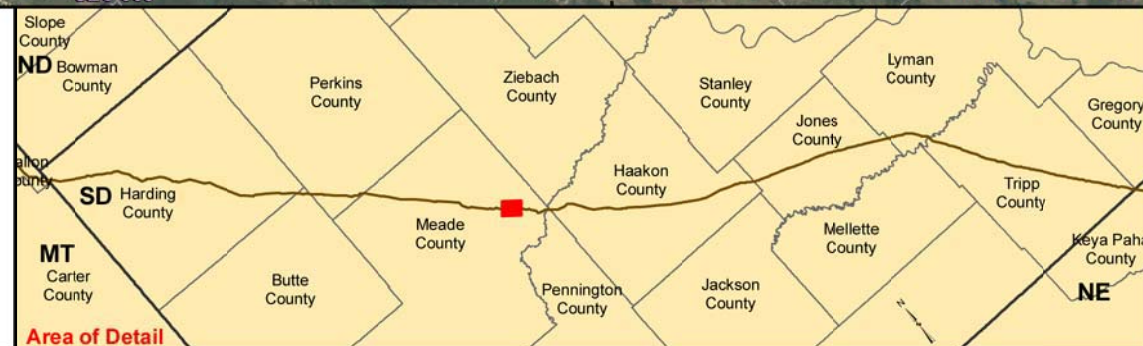


**Legend**

- Milepost
- Steele City Segment
- Pump Station
- County Line
- Section Line

**Landuse**

- (a) Land used primarily for row and non-row crops in rotation
- (b) Irrigated lands
- (c) Pasturelands and Rangelands
- (d) Hayland
- (e) Undisturbed native grasslands
- (f) Existing and potential extractive non-renewable resources
- (g) Other major industries
- (h) Rural residences and farms/leads, family farms, and ranches
- (i) Residential
- (j) Public, commercial, and institutional use
- (k) Municipal water supply and water sources for organized rural water systems - Confidential Information
- (l) Noise sensitive land uses



**TransCanada**  
In business to deliver

**ConocoPhillips**

Scale 1:24,000

Miles: 0, 0.125, 0.25, 0.5, 0.75, 1

Kilometers: 0, 0.25, 0.5, 1, 1.5, 2

North arrow pointing up.

**SOUTH DAKOTA STUDY AREA  
KEYSTONE XL PROJECT**

**MAPBOOK 1  
LANDUSE / LANDCOVER**

**MAP 25 OF 58**



**Legend**

- Milepost
- Steele City Segment
- Pump Station
- County Line
- Section Line

**Landuse**

- (a) Land used primarily for row and non-row crops in rotation
- (b) Irrigated lands
- (c) Pasturelands and Rangelands
- (d) Hayland
- (e) Undisturbed native grasslands
- (f) Existing and potential extractive non-renewable resources
- (g) Other major industries
- (h) Rural residences and farms/leads, family farms, and ranches
- (i) Residential
- (j) Public, commercial, and institutional use
- (k) Municipal water supply and water sources for organized rural water systems - Confidential Information
- (l) Noise sensitive land uses



**TransCanada**  
*In business to deliver*

**ConocoPhillips**

Scale 1:24,000

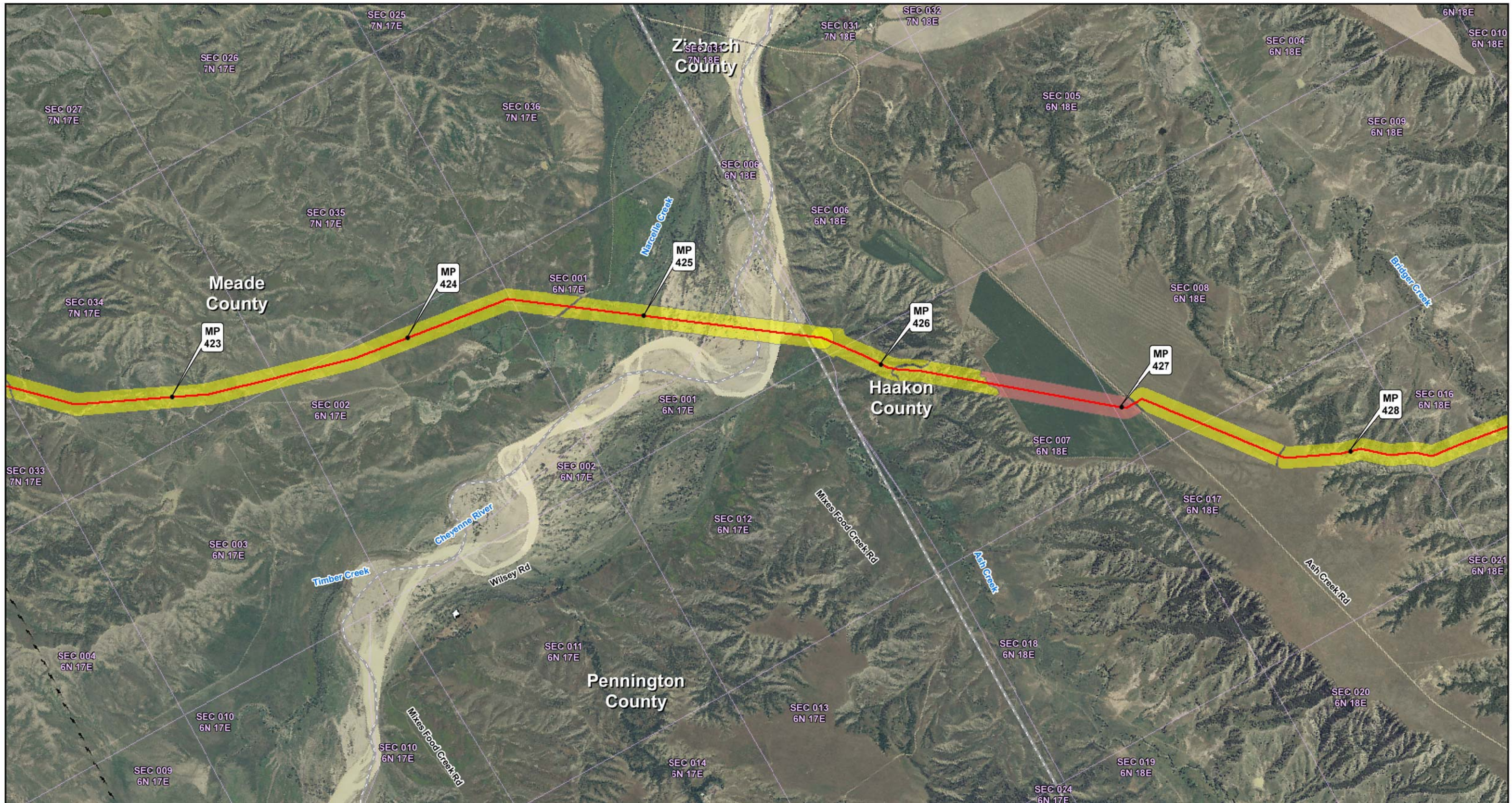
0 0.125 0.25 0.5 0.75 1 Miles

0 0.25 0.5 1 1.5 2 Kilometers

**SOUTH DAKOTA STUDY AREA  
KEYSTONE XL PROJECT**

**MAPBOOK 1  
LANDUSE / LANDCOVER**

**MAP 26 OF 58**



**Legend**

- Milepost
- Steele City Segment
- ⊠ Pump Station
- ▭ County Line
- ▭ Section Line

**Landuse**

- (a) Land used primarily for row and non-row crops in rotation
- (b) Irrigated lands
- (c) Pasturelands and Rangelands
- (d) Hayland
- (e) Undisturbed native grasslands
- (f) Existing and potential extractive non-renewable resources
- (g) Other major industries
- (h) Rural residences and farms/leads, family farms, and ranches
- (i) Residential
- (j) Public, commercial, and institutional use
- (k) Municipal water supply and water sources for organized rural water systems - Confidential Information
- (l) Noise sensitive land uses



**TransCanada**  
*In business to deliver*

**ConocoPhillips**

0 0.125 0.25 0.5 0.75 1 Miles

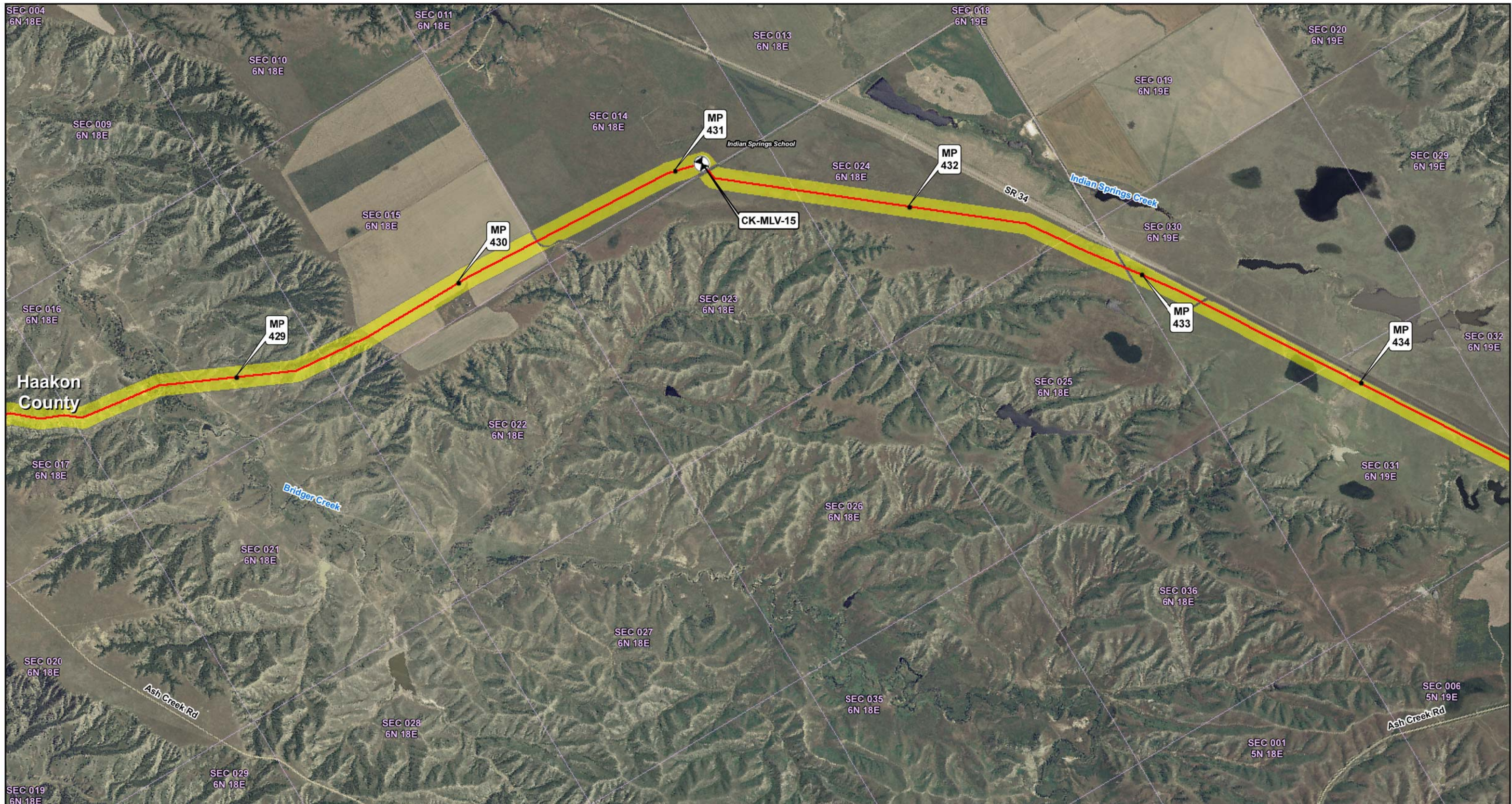
Scale 1:24,000

0 0.25 0.5 1 1.5 2 Kilometers

**SOUTH DAKOTA STUDY AREA  
KEYSTONE XL PROJECT**

**MAPBOOK 1  
LANDUSE / LANDCOVER**

**MAP 27 OF 58**

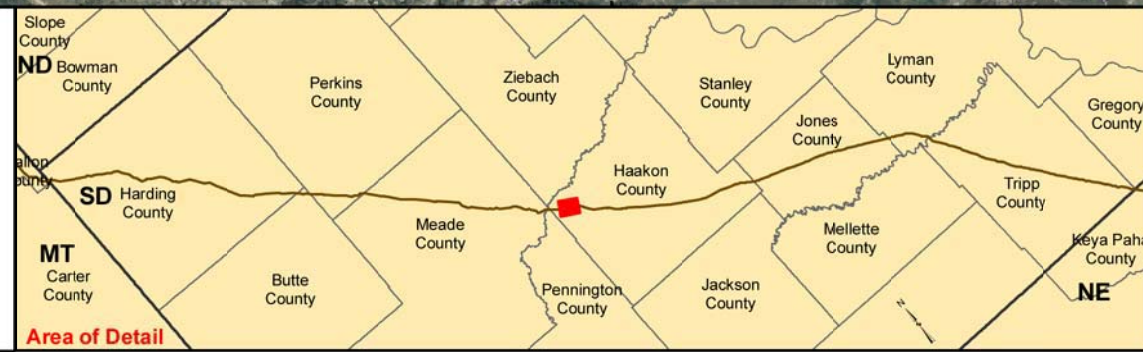


**Legend**

- Milepost
- Steele City Segment
- ⊠ Pump Station
- ▭ County Line
- ▭ Section Line

**Landuse**

- (a) Land used primarily for row and non-row crops in rotation
- (b) Irrigated lands
- (c) Pasturelands and Rangelands
- (d) Hayland
- (e) Undisturbed native grasslands
- (f) Existing and potential extractive non-renewable resources
- (g) Other major industries
- (h) Rural residences and farmsteads, family farms, and ranches
- (i) Residential
- (j) Public, commercial, and institutional use
- (k) Municipal water supply and water sources for organized rural water systems - Confidential Information
- (l) Noise sensitive land uses



**TransCanada**  
*In business to deliver*

**ConocoPhillips**

0 0.125 0.25 0.5 0.75 1 Miles

Scale 1:24,000

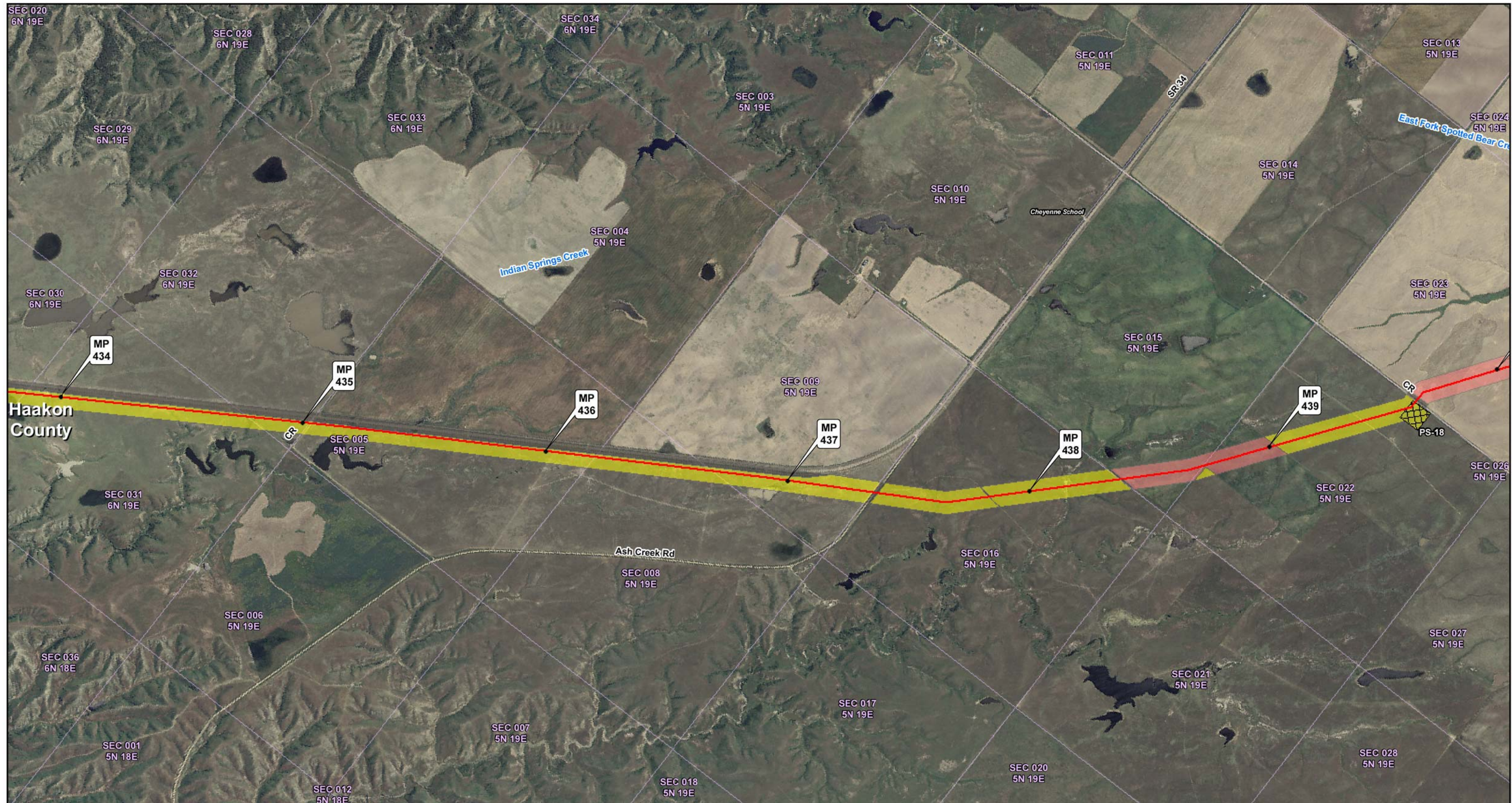
0 0.25 0.5 1 1.5 2 Kilometers

**SOUTH DAKOTA STUDY AREA  
KEYSTONE XL PROJECT**

**MAPBOOK 1  
LANDUSE / LANDCOVER**

**MAP 28 OF 58**





**Legend**

- Milepost
- Steele City Segment
- ⊠ Pump Station
- ▭ County Line
- ▭ Section Line

**Landuse**

- (a) Land used primarily for row and non-row crops in rotation
- (b) Irrigated lands
- (c) Pasturelands and Rangelands
- (d) Hayland
- (e) Undisturbed native grasslands
- (f) Existing and potential extractive non-renewable resources
- (g) Other major industries
- (h) Rural residences and farmsteads, family farms, and ranches
- (i) Residential
- (j) Public, commercial, and institutional use
- (k) Municipal water supply and water sources for organized rural water systems - Confidential Information
- (l) Noise sensitive land uses



**TransCanada**  
*In business to deliver*

**ConocoPhillips**

0 0.125 0.25 0.5 0.75 1 Miles

Scale 1:24,000

0 0.25 0.5 1 1.5 2 Kilometers

**SOUTH DAKOTA STUDY AREA  
KEYSTONE XL PROJECT**

**MAPBOOK 1  
LANDUSE / LANDCOVER**

**MAP 29 OF 58**



**Legend**

- Milepost
- Steele City Segment
- ⊠ Pump Station
- ▭ County Line
- ▭ Section Line

**Landuse**

- (a) Land used primarily for row and non-row crops in rotation
- (b) Irrigated lands
- (c) Pasturelands and Rangelands
- (d) Hayland
- (e) Undisturbed native grasslands
- (f) Existing and potential extractive non-renewable resources
- (g) Other major industries
- (h) Rural residences and farmsteads, family farms, and ranches
- (i) Residential
- (j) Public, commercial, and institutional use
- (k) Municipal water supply and water sources for organized rural water systems - Confidential Information
- (l) Noise sensitive land uses



**TransCanada**  
*In business to deliver*

**ConocoPhillips**

0 0.125 0.25 0.5 0.75 1 Miles

Scale 1:24,000

0 0.25 0.5 1 1.5 2 Kilometers

**SOUTH DAKOTA STUDY AREA  
KEYSTONE XL PROJECT**

**MAPBOOK 1  
LANDUSE / LANDCOVER**

**MAP 30 OF 58**