






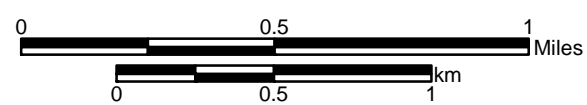
**Legend**

-  Valve Site (May 2, 2008)
-  Additional Valve Site (October 20, 2008)
-  Milepost (May 2, 2008)
-  Proposed Centerline (May 2, 2008)
-  Proposed Centerline (October 20, 2008)

**Keystone Pipeline Project**

South Dakota Public Utility Commission Application  
-Project Location-

**Map 37 of 46**








**1:24,000**







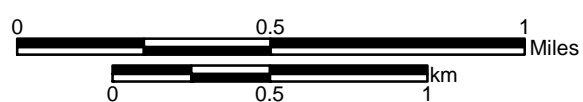
**Legend**

-  Valve Site (May 2, 2008)
-  Additional Valve Site (October 20, 2008)
-  Milepost (May 2, 2008)
-  Proposed Centerline (May 2, 2008)
-  Proposed Centerline (October 20, 2008)

**Keystone Pipeline Project**

South Dakota Public Utility Commission Application  
-Project Location-

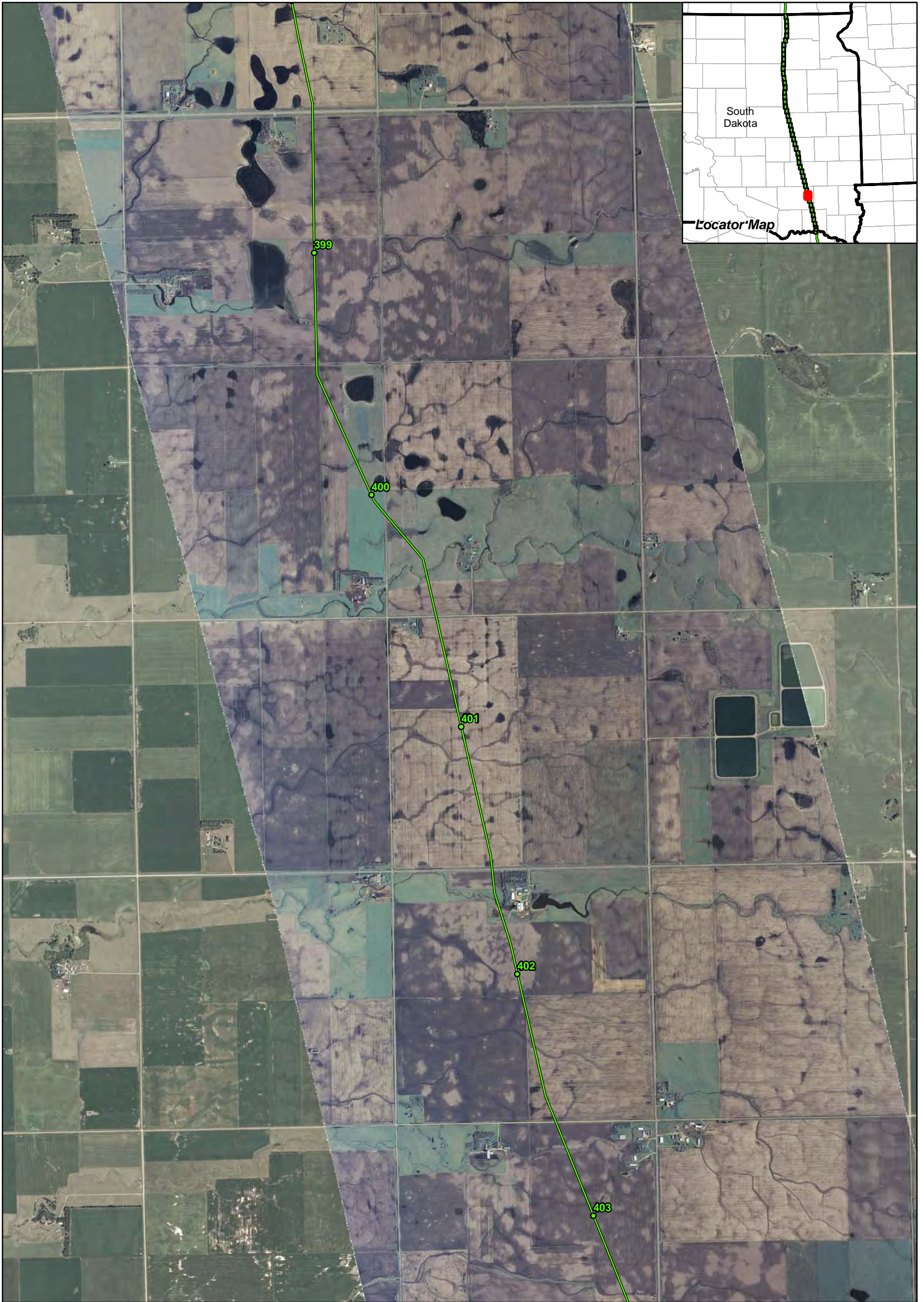
**Map 38 of 46**



**1:24,000**







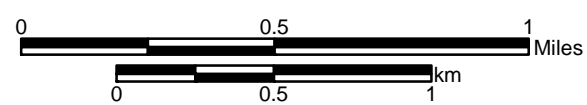
**Legend**

- ◆ Valve Site (May 2, 2008)
- ◆ Additional Valve Site (October 20, 2008)
- Milepost (May 2, 2008)
- Proposed Centerline (May 2, 2008)
- Proposed Centerline (October 20, 2008)

**Keystone Pipeline Project**

South Dakota Public Utility Commission Application  
-Project Location-

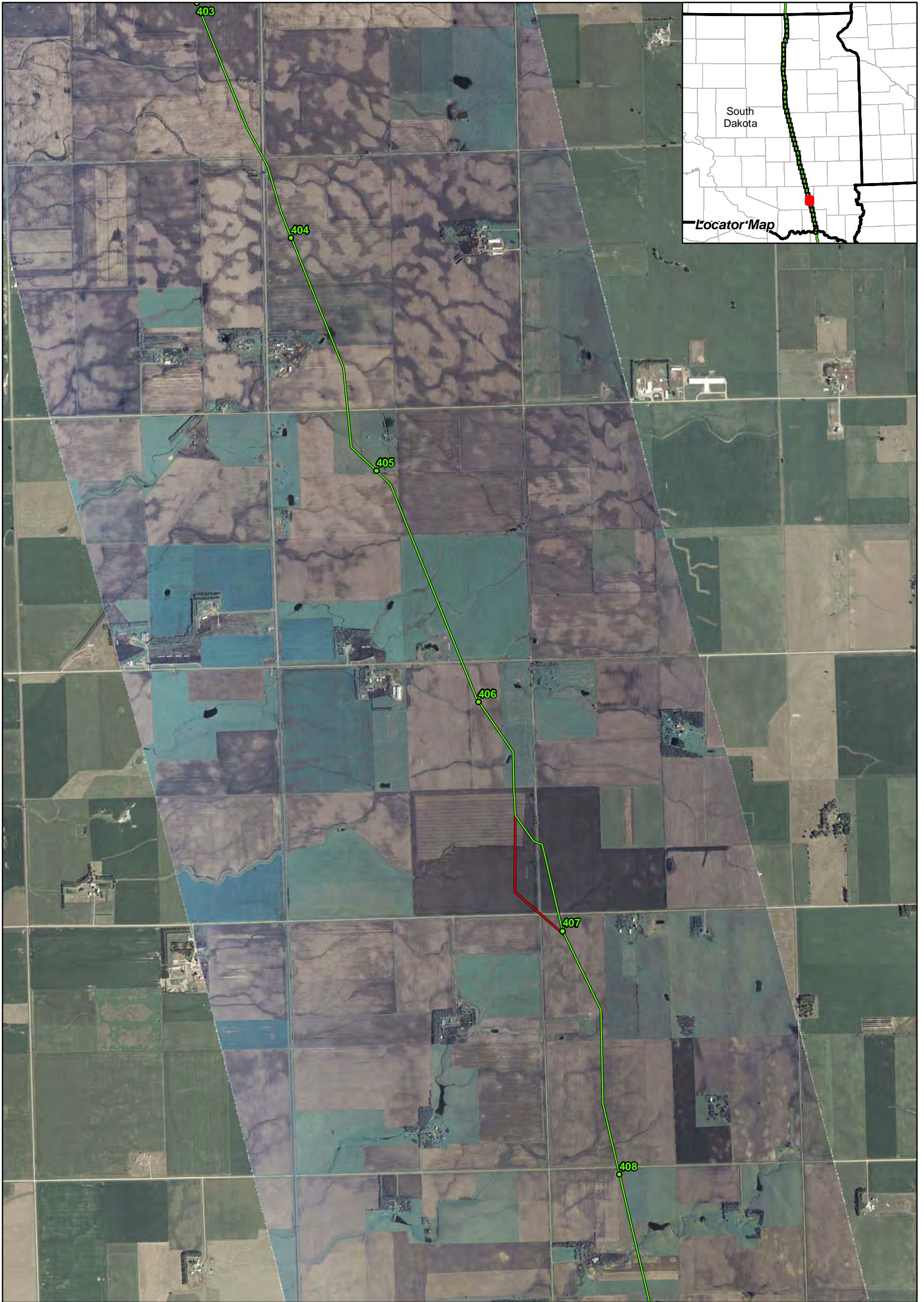
**Map 39 of 46**



**1:24,000**







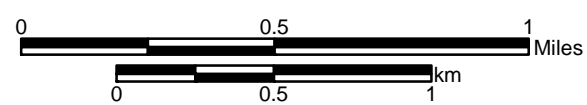
**Legend**

- ◊ Valve Site (May 2, 2008)
- ◊ Additional Valve Site (October 20, 2008)
- Milepost (May 2, 2008)
- Proposed Centerline (May 2, 2008)
- Proposed Centerline (October 20, 2008)

**Keystone Pipeline Project**

South Dakota Public Utility Commission Application  
-Project Location-

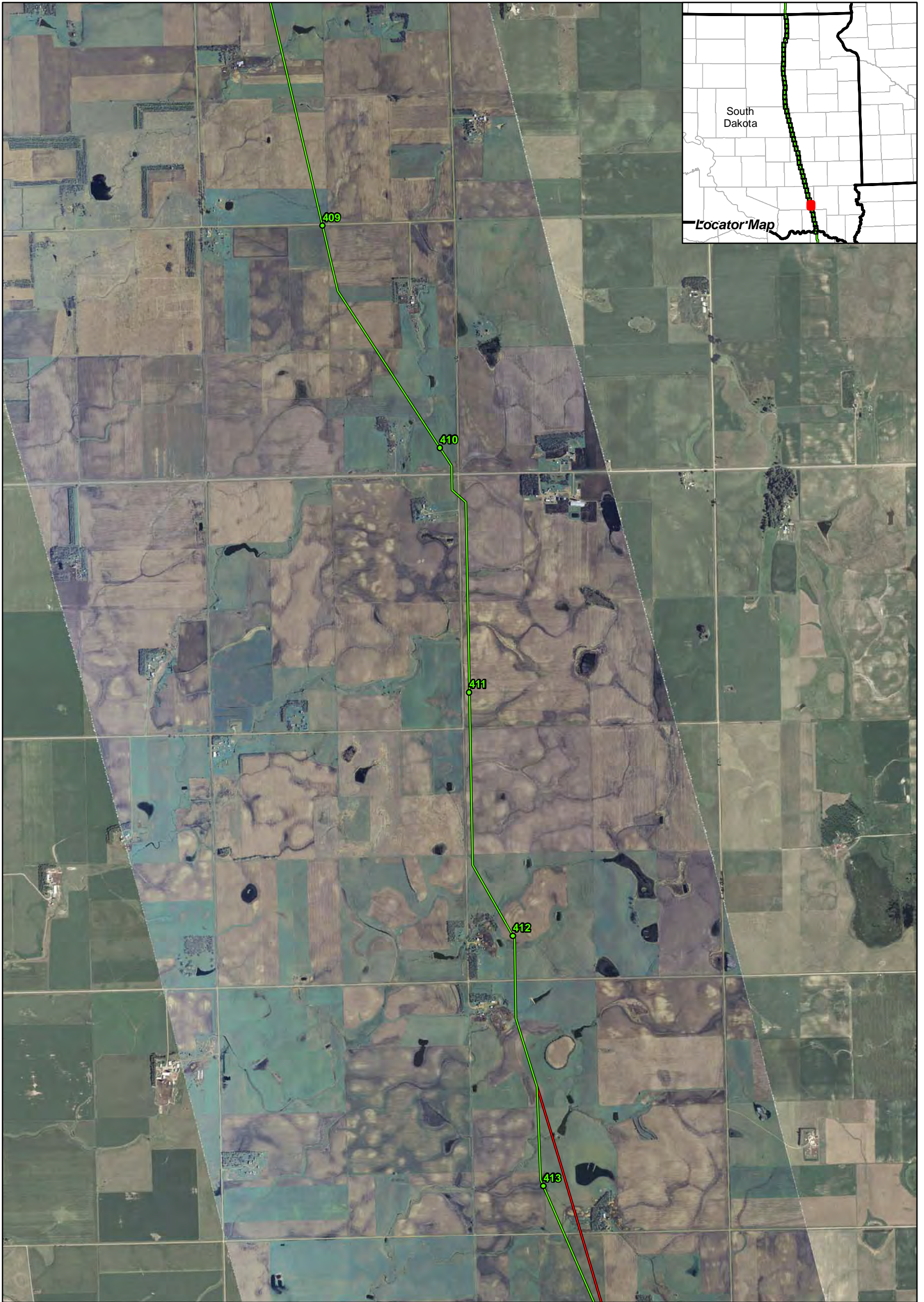
**Map 40 of 46**








**1:24,000**







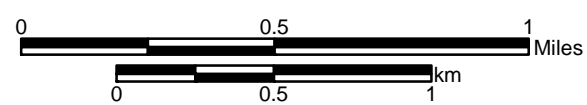
**Legend**

-  Valve Site (May 2, 2008)
-  Additional Valve Site (October 20, 2008)
-  Milepost (May 2, 2008)
-  Proposed Centerline (May 2, 2008)
-  Proposed Centerline (October 20, 2008)

**Keystone Pipeline Project**

South Dakota Public Utility Commission Application  
-Project Location-

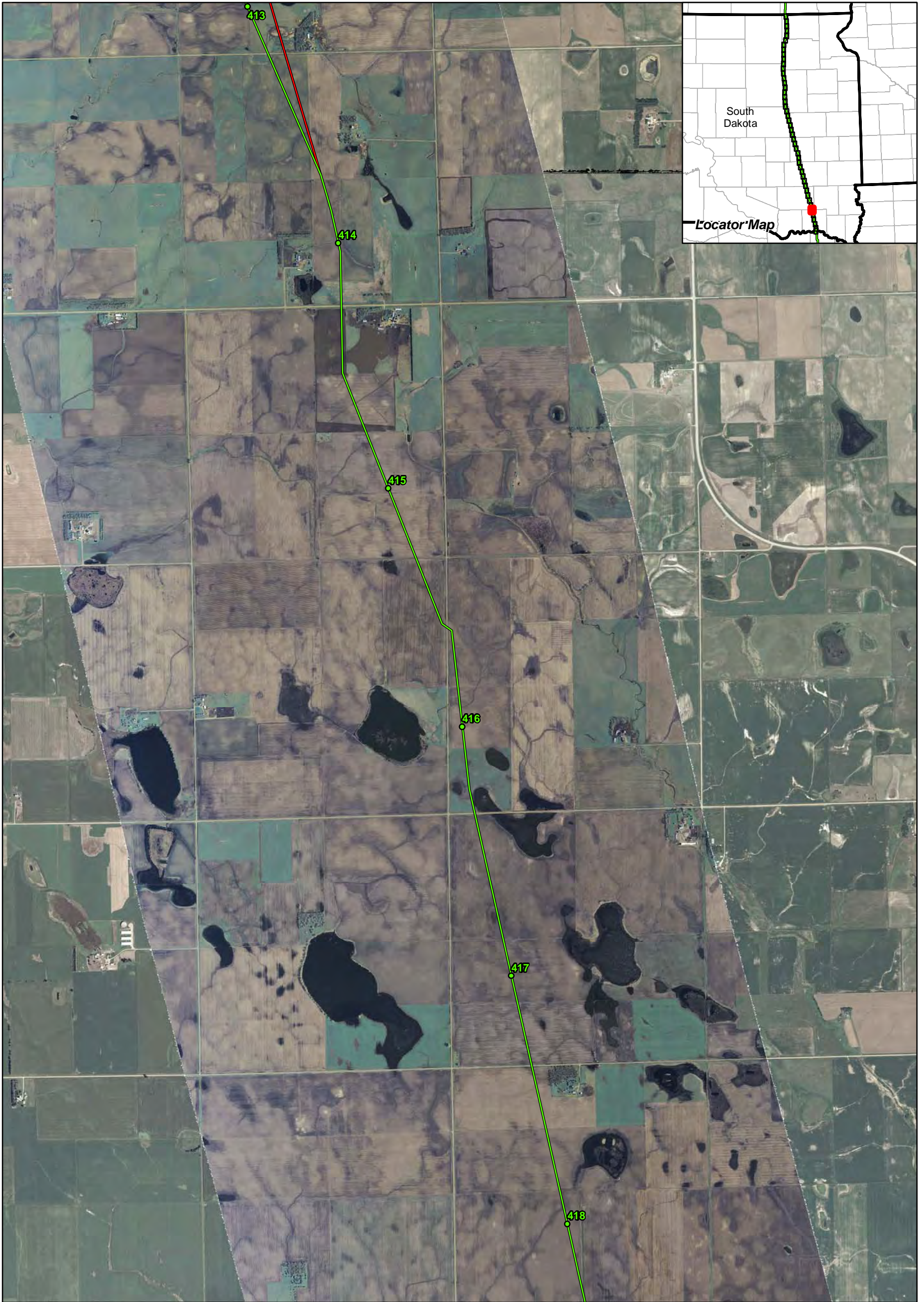
**Map 41 of 46**








**1:24,000**







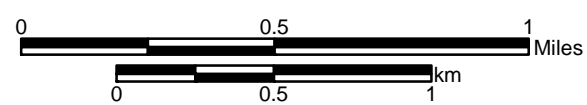
**Legend**

-  Valve Site (May 2, 2008)
-  Additional Valve Site (October 20, 2008)
-  Milepost (May 2, 2008)
-  Proposed Centerline (May 2, 2008)
-  Proposed Centerline (October 20, 2008)

**Keystone Pipeline Project**

South Dakota Public Utility Commission Application  
-Project Location-

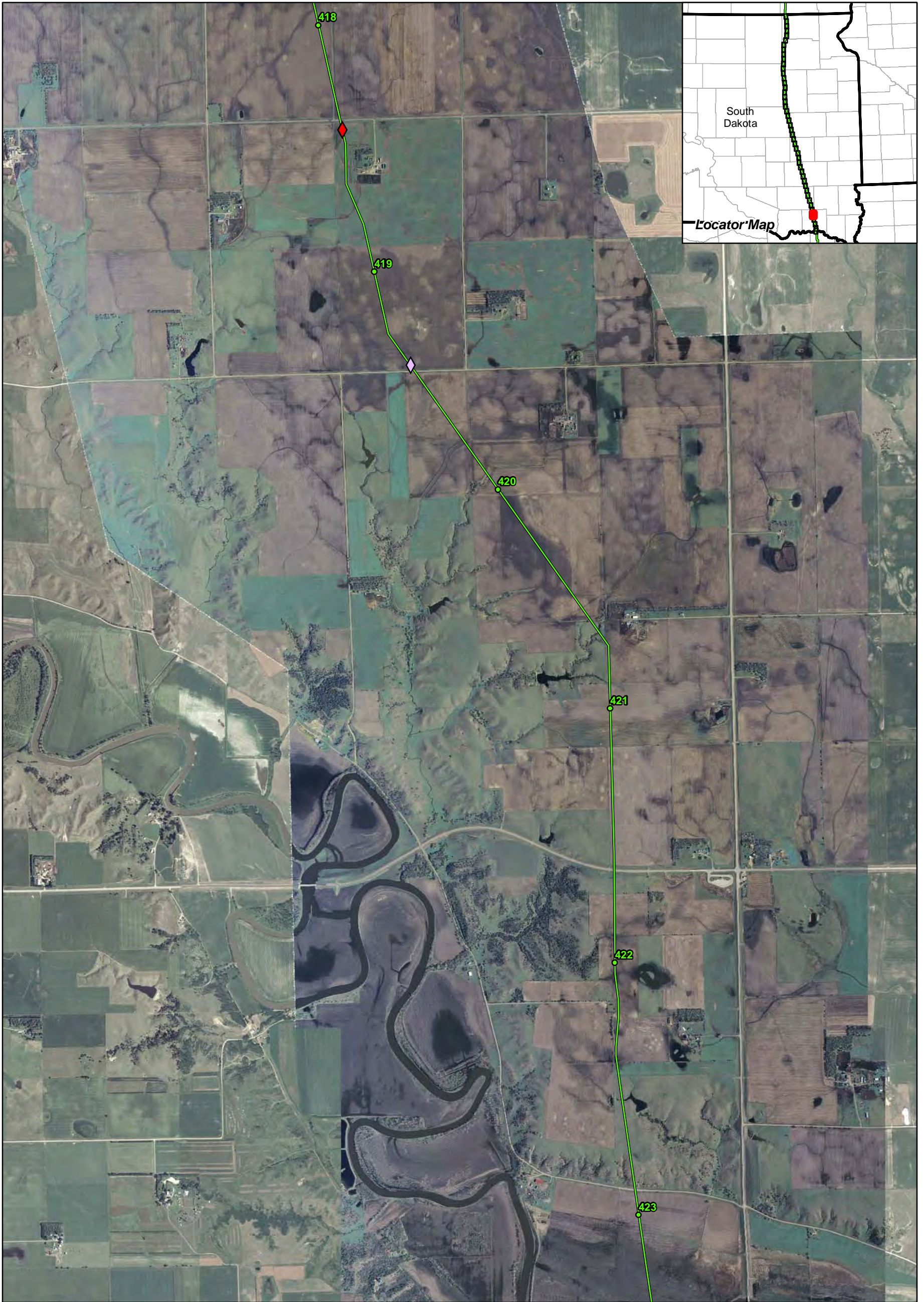
**Map 42 of 46**








**1:24,000**







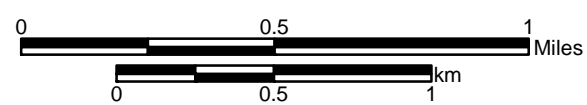
**Legend**

-  Valve Site (May 2, 2008)
-  Additional Valve Site (October 20, 2008)
-  Milepost (May 2, 2008)
-  Proposed Centerline (May 2, 2008)
-  Proposed Centerline (October 20, 2008)

**Keystone Pipeline Project**

South Dakota Public Utility Commission Application  
-Project Location-

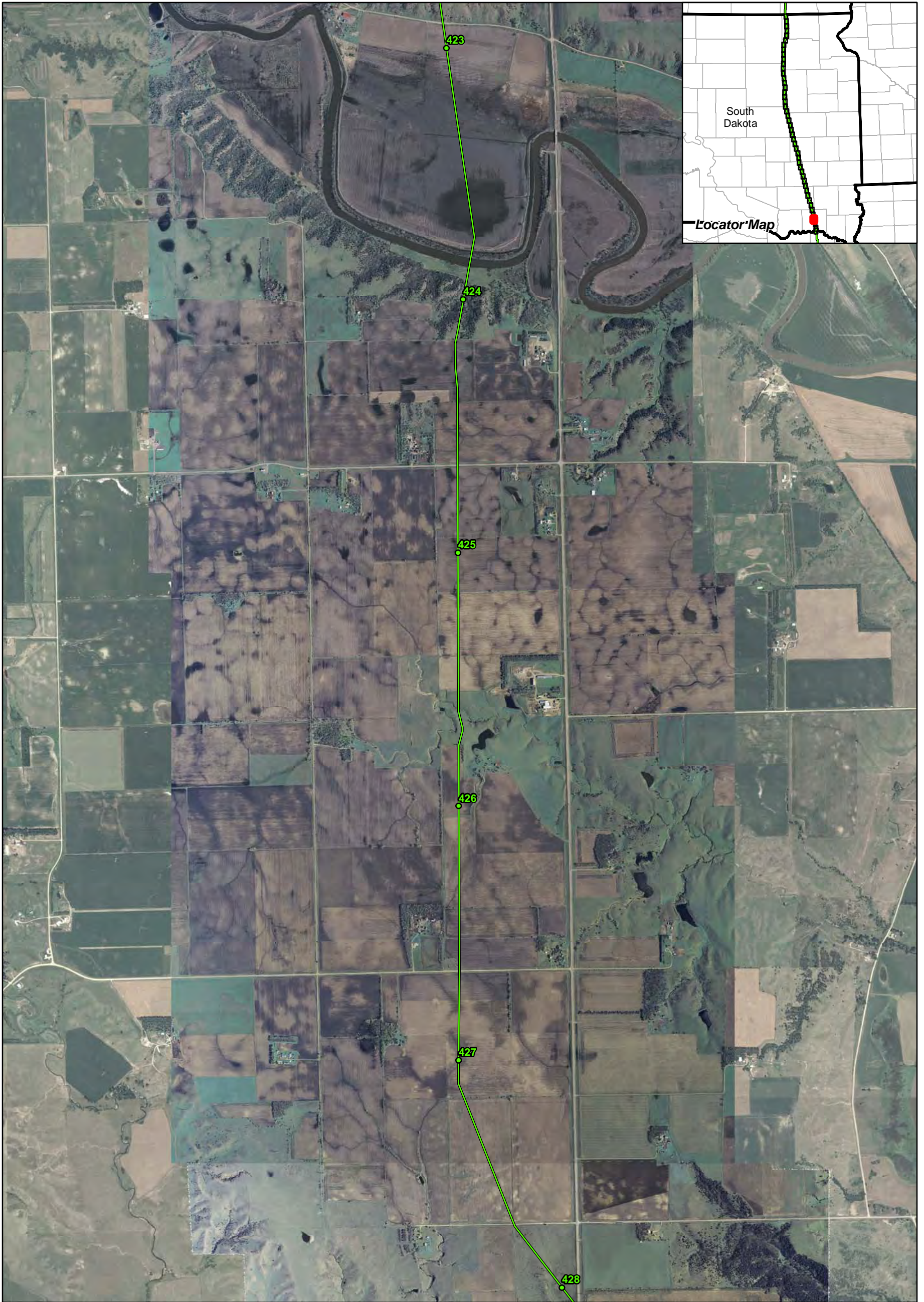
**Map 43 of 46**








**1:24,000**







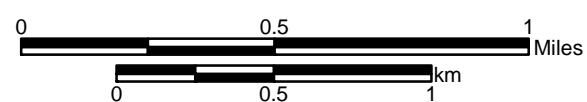
**Legend**

-  Valve Site (May 2, 2008)
-  Additional Valve Site (October 20, 2008)
-  Milepost (May 2, 2008)
-  Proposed Centerline (May 2, 2008)
-  Proposed Centerline (October 20, 2008)

**Keystone Pipeline Project**

South Dakota Public Utility Commission Application  
-Project Location-

**Map 44 of 46**



**1:24,000**

