

- Turbine Location
- Access Road
- Crane Path
- Collector Line**
 - Underground
 - Overhead/Underground
- Intermittent Stream (USGS NHD)
- Perennial Stream/River (USGS NHD)
- Freshwater Emergent (PEM) Wetland (Field-Delineated Data)
- Potential Aquatic Resource (Desktop-Level Data)
- Project Boundary
- Municipality
- Watershed Boundary (USGS NHD, HUC-8)
- Groundwater Protection Zones**
(East Dakota Water Development District)
 - Zone A - Wellhead Protection Area
 - Zone B - Shallow Aquifer Boundaries and Areas Contributing Drainage to Zone A

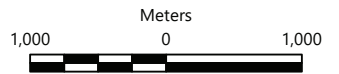
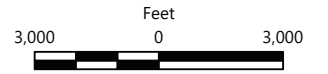


Figure 7a

TURBINE SITING ORDINANCE CONSTRAINTS OVERVIEW
- WATER FEATURES - NORTHWEST -
 Tatanka Ridge Wind Project
 Tatanka Ridge Wind, LLC
 Deuel County, South Dakota

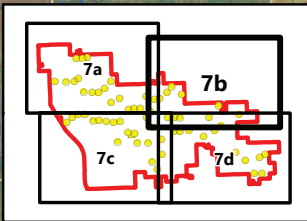
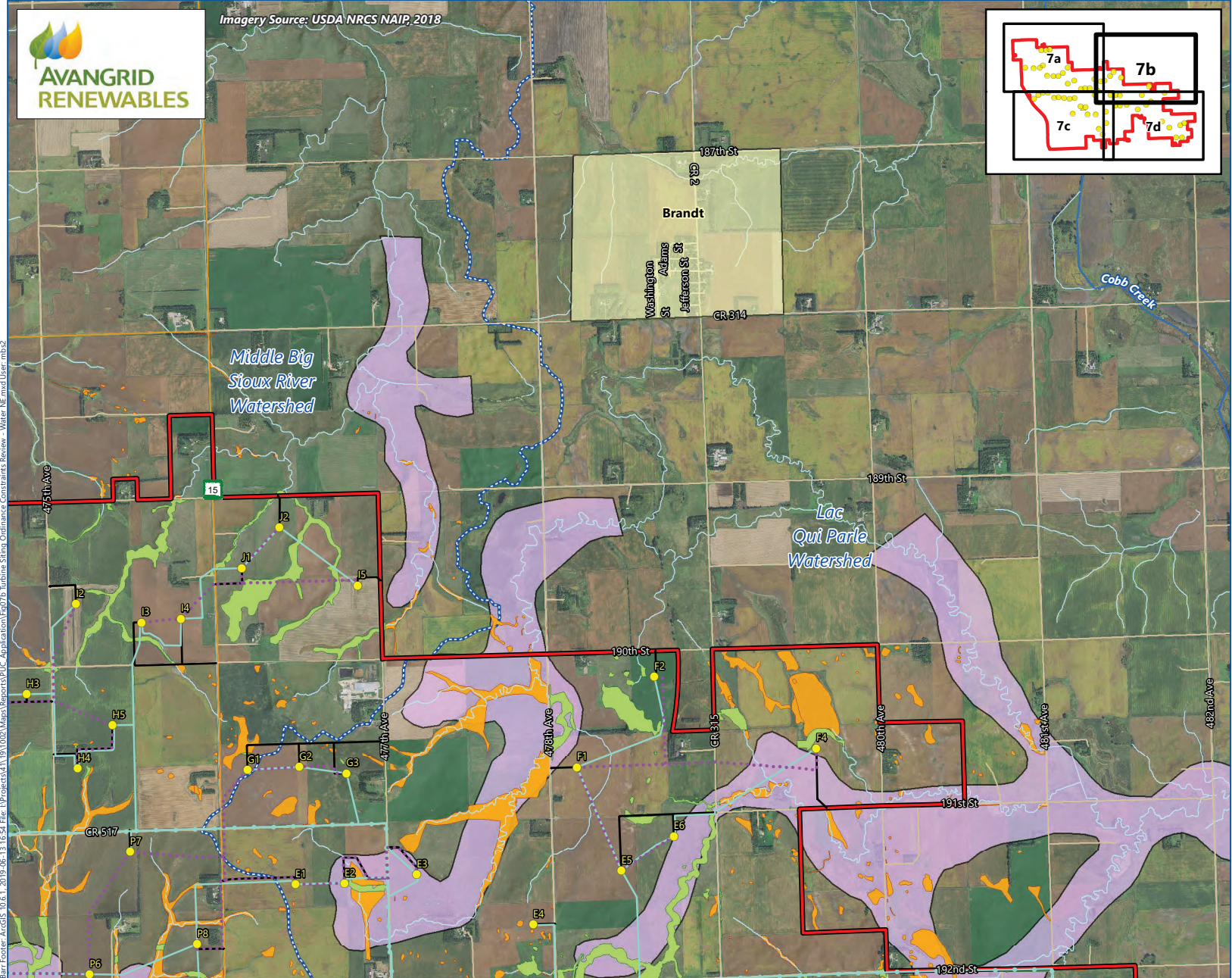
Barr Footer: ArcGIS 10.6.1, 2019-05-29 09:25 File: h:\projects\411_191002\Maps\Reports\PUC_Application\Fig7a_Turbine_Siting_Ordinance_Constraints_Review_Water_NW.mxd User: mbs2



Imagery Source: USDA NRCS NAIP, 2018



Imagery Source: USDA NRCS NAIP, 2018



- Turbine Location
- Access Road
- ⋯ Crane Path
- Collector Line**
- Underground
- Overhead/Underground
- Intermittent Stream (USGS NHD)
- Perennial Stream/River (USGS NHD)
- Freshwater Emergent (PEM) Wetland (Field-Delineated Data)
- Potential Aquatic Resource (Desktop-Level Data)
- Project Boundary
- Municipality
- Watershed Boundary (USGS NHD, HUC-8)
- Groundwater Protection Zones**
(East Dakota Water Development District)
- Zone A - Wellhead Protection Area
- Zone B - Shallow Aquifer Boundaries and Areas Contributing Drainage to Zone A

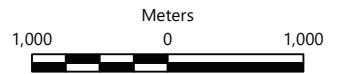
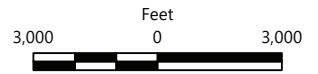
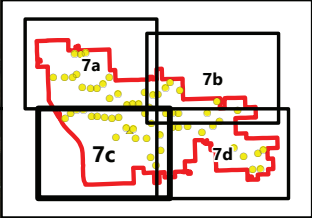
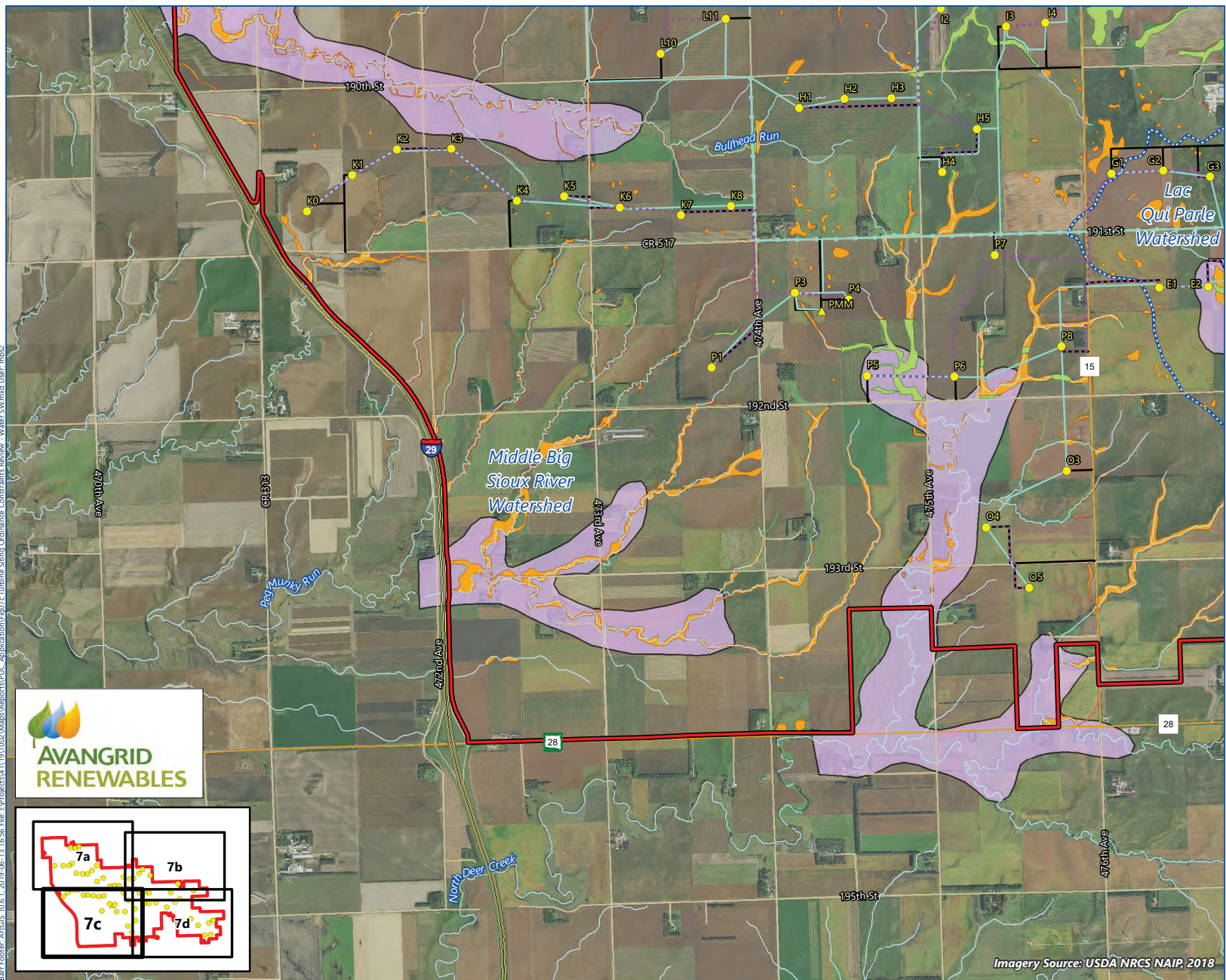


Figure 7b

TURBINE SITING ORDINANCE CONSTRAINTS OVERVIEW - WATER FEATURES - NORTHEAST -
 Tatanka Ridge Wind Project
 Tatanka Ridge Wind, LLC
 Deuel County, South Dakota

Barr Footer: ArcGIS 10.6.1, 2019-06-13 16:54 File: \\projects\411910021\Map\Reports\PLC_Application\Fig7b_Turbine_Siting_Ordinance_Constraints_Review - Water NE.mxd User: mbs2

Barr Footer: ArcGIS 10.6.1, 2019-06-13 16:56 File: \\Project\411_191002\Map\Reports\PUC_Application\Fig7c_Turbine_Siting_Ordinance_Constraints_Review_-_Water_SW\med User.mxd



- Turbine Location
- ▲ Met Tower Location
- Access Road
- ⋯ Crane Path
- Collector Line**
- Underground
- Overhead/Underground
- Intermittent Stream (USGS NHD)
- Freshwater Emergent (PEM) Wetland (Field-Delineated Data)
- Potential Aquatic Resource (Desktop-Level Data)
- Project Boundary
- Municipality
- Watershed Boundary (USGS NHD, HUC-8)
- Groundwater Protection Zones**
(East Dakota Water Development District)
- Zone A - Wellhead Protection Area
- Zone B - Shallow Aquifer Boundaries and Areas Contributing Drainage to Zone A

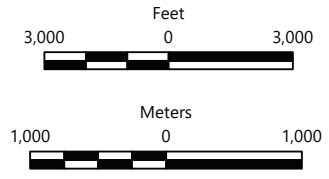
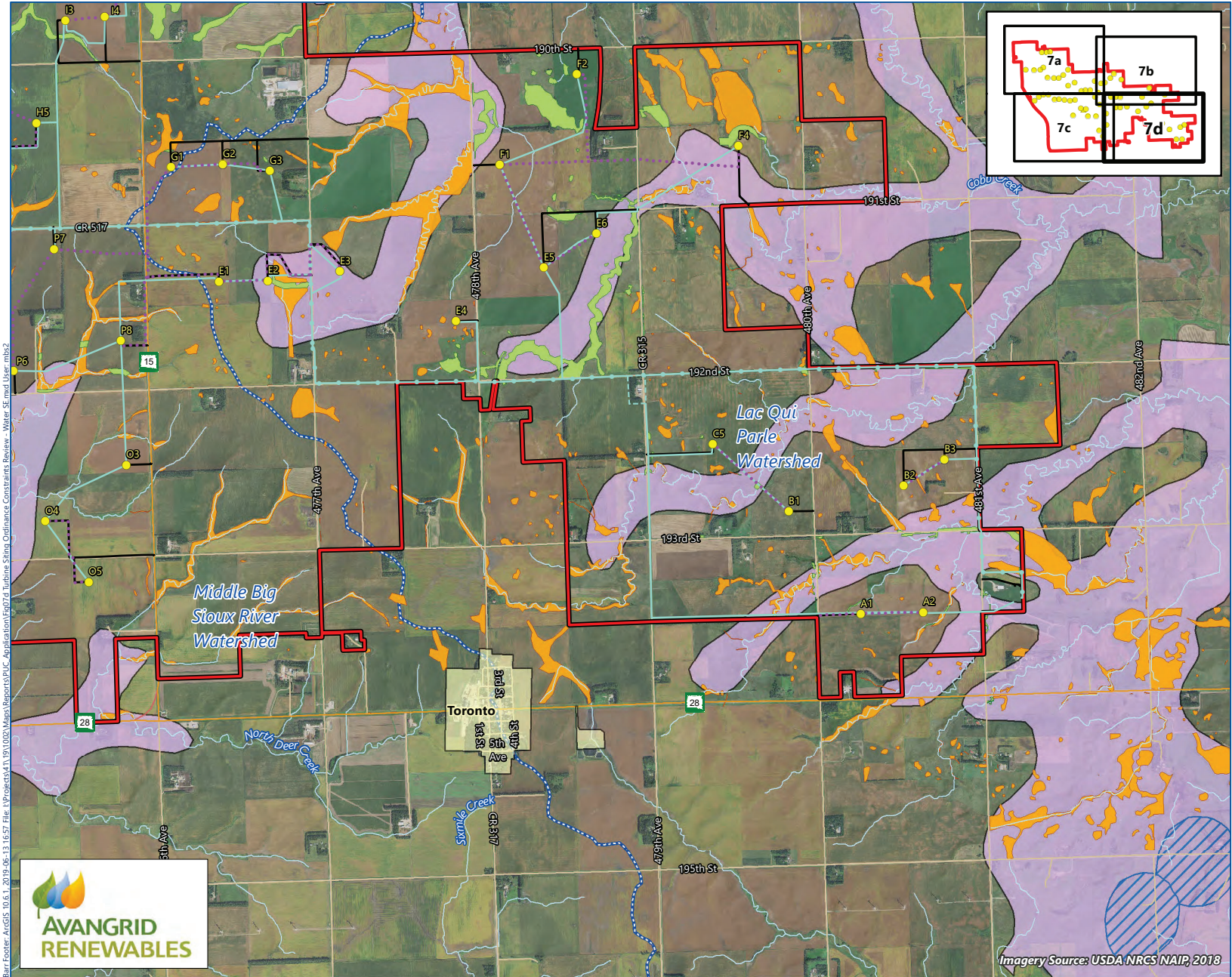


Figure 7c

TURBINE SITING ORDINANCE CONSTRAINTS OVERVIEW
- WATER FEATURES - SOUTHWEST -
 Tatanka Ridge Wind Project
 Tatanka Ridge Wind, LLC
 Deuel County, South Dakota

Imagery Source: USDA NRCS NAIP, 2018



- Turbine Location
- Access Road
- ⋯ Crane Path
- Collector Line**
- Underground
- Overhead/Underground
- Final Alignment To Be Determined
- Intermittent Stream (USGS NHD)
- Freshwater Emergent (PEM) Wetland (Field-Delineated Data)
- Potential Aquatic Resource (Desktop-Level Data)
- Project Boundary
- Municipality
- Watershed Boundary (USGS NHD, HUC-8)
- Groundwater Protection Zones**
(East Dakota Water Development District)
- Zone A - Wellhead Protection Area
- Zone B - Shallow Aquifer Boundaries and Areas Contributing Drainage to Zone A

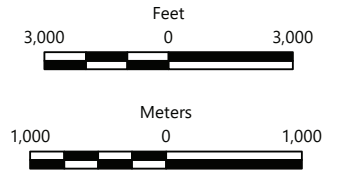


Figure 7d

TURBINE SITING ORDINANCE CONSTRAINTS OVERVIEW - WATER FEATURES - SOUTHEAST -
 Tatanka Ridge Wind Project
 Tatanka Ridge Wind, LLC
 Deuel County, South Dakota

Barr Footer: ArcGIS 10.6.1, 2019-06-13 16:57 File: \\projects\11_191002\Map\Reports\PLC_Application\Fig7d_Turbine_Siting_Ordinance_Constraints_Review - Water SE med User.mxd



Imagery Source: USDA NRGs NAIR, 2018