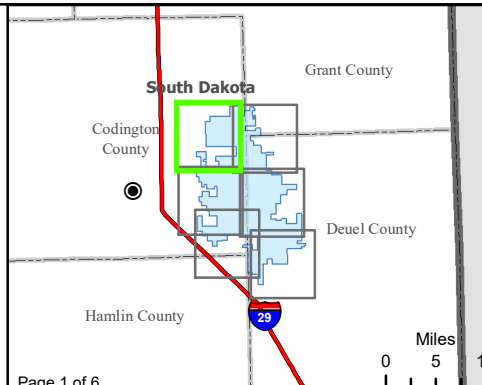


Figure 12. Water Resources

Crowned Ridge II Wind Farm

- Intersection of Floodplain and Project Infrastructure
- City
- U.S. Highway
- State Highway
- Flow Direction
- South Dakota Beneficial Use Stream
- South Dakota Beneficial Use Lake
- Watershed Boundary (HUC12)
- Project Boundary
- County Boundary
- Township/Range Boundary
- FEMA Flood Zone**
- A
- NWI Wetland**
- Freshwater Emergent Wetland
- Freshwater Forested/Shrub Wetland
- Lake, Pond, or Riverine Wetland



Kilometers

0 1 2

Miles

0 1 2

Base Map: USGS 7.5' Topographic Map
 Source: Esri ArcGIS Online service
 Quadrangle: South Shore (1973),
 Kranzburg (1970)
 Township/Range: T118N, R51W &
 T117N, R51W
 Codington County, South Dakota

Projection: NAD 1983 UTM Zone 14N

SWCA
ENVIRONMENTAL CONSULTANTS

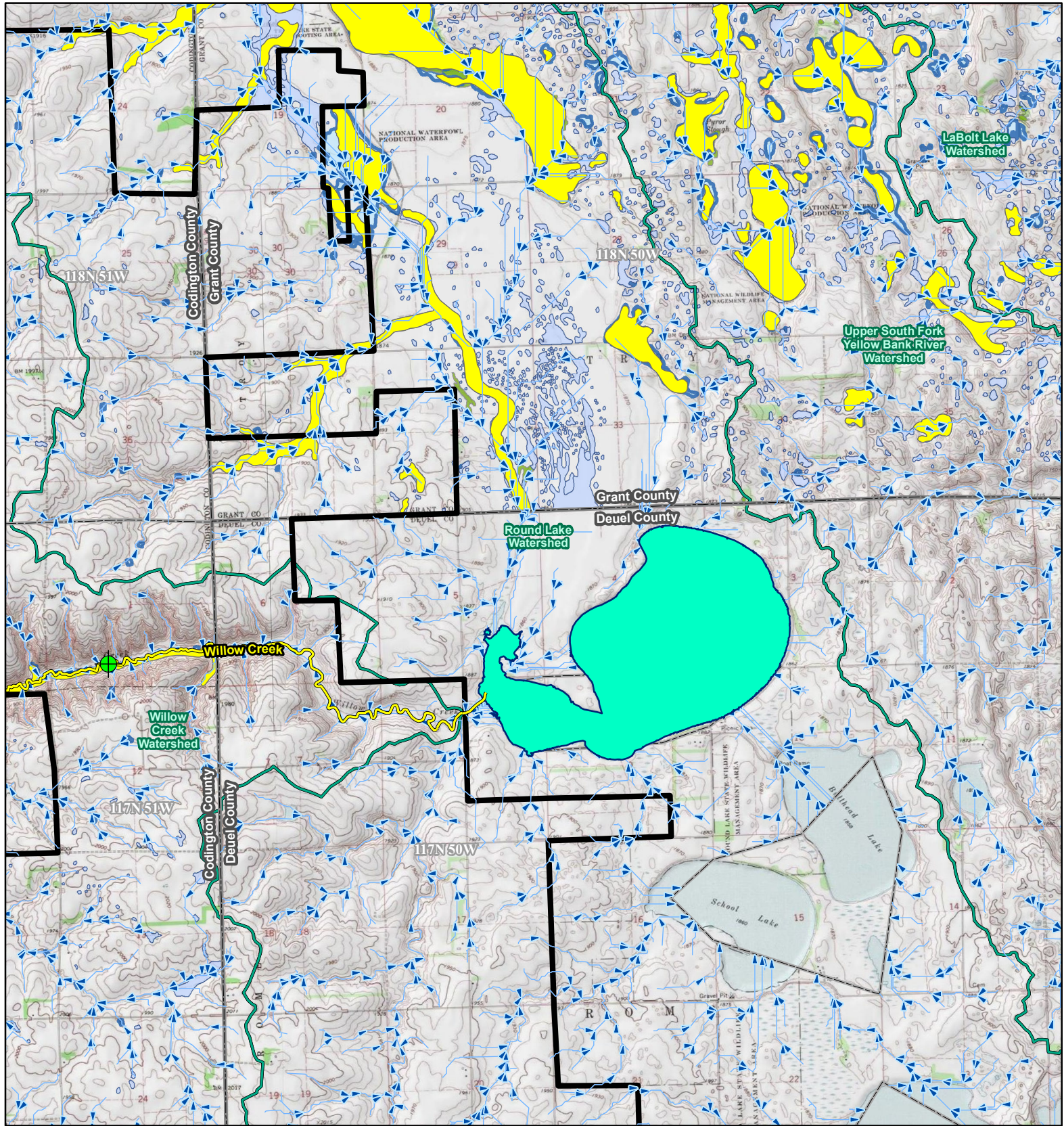
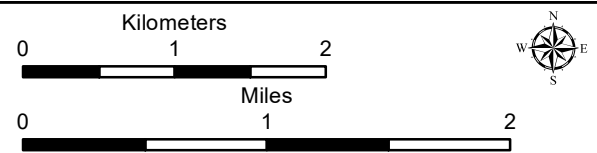
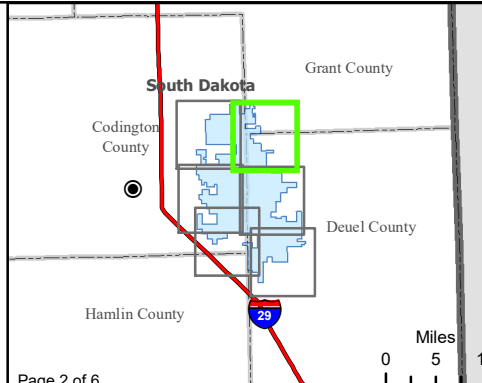


Figure 12. Water Resources

Crowned Ridge II Wind Farm

- Intersection of Floodplain and Project Infrastructure
- City
- U.S. Highway
- State Highway
- Flow Direction
- South Dakota Beneficial Use Stream
- South Dakota Beneficial Use Lake
- Watershed Boundary (HUC12)
- Project Boundary
- County Boundary
- Township/Range Boundary
- FEMA Flood Zone**
- A
- NWI Wetland**
- Freshwater Emergent Wetland
- Freshwater Forested/Shrub Wetland
- Lake, Pond, or Riverine Wetland



Base Map: USGS 7.5' Topographic Map
 Source: Esri ArcGIS Online service
 Quadrangle: South Shore (1973), Stockholm (1973),
 Kranzburg (1970), Goodwin (1970)
 Township/Range: T118N, R51W & T118N, R50W &
 T117N, R51W & T117N, R50W
 Codington, Deuel, and Grant Counties, South Dakota

Projection: NAD 1983 UTM Zone 14N

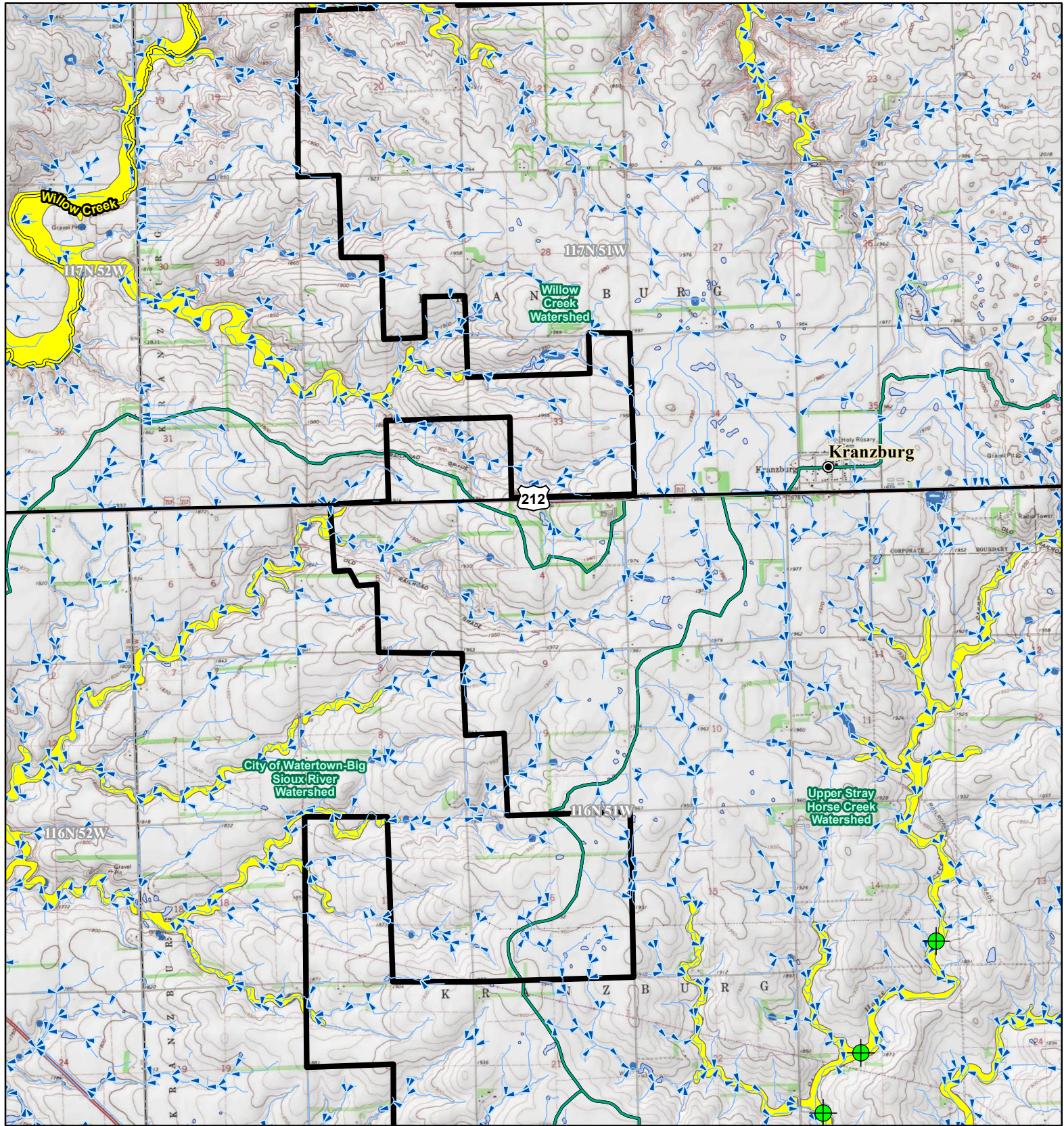
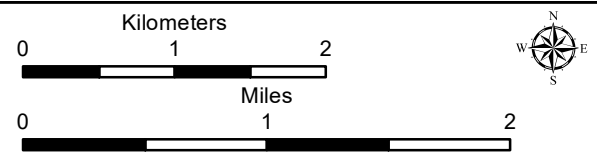
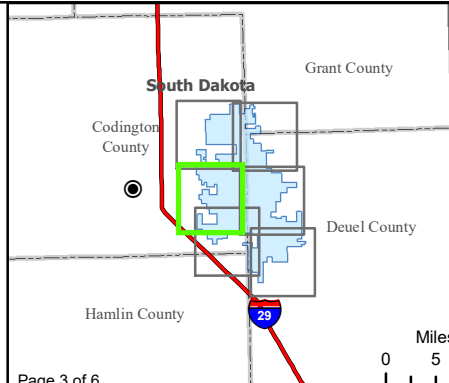


Figure 12. Water Resources

Crowned Ridge II Wind Farm

- Intersection of Floodplain and Project Infrastructure
- City
- U.S. Highway
- State Highway
- Flow Direction
- South Dakota Beneficial Use Stream
- South Dakota Beneficial Use Lake
- Watershed Boundary (HUC12)
- Project Boundary
- County Boundary
- Township/Range Boundary
- FEMA Flood Zone**
- A
- NWI Wetland**
- Freshwater Emergent Wetland
- Freshwater Forested/Shrub Wetland
- Lake, Pond, or Riverine Wetland



Base Map: USGS 7.5' Topographic Map
 Source: Esri ArcGIS Online service
 Quadrangle: Kranzburg (1970),
 Kranzburg SW (1981)
 Township/Range: T117N, R51W &
 T116N, R51W
 Codington County, South Dakota

Projection: NAD 1983 UTM Zone 14N



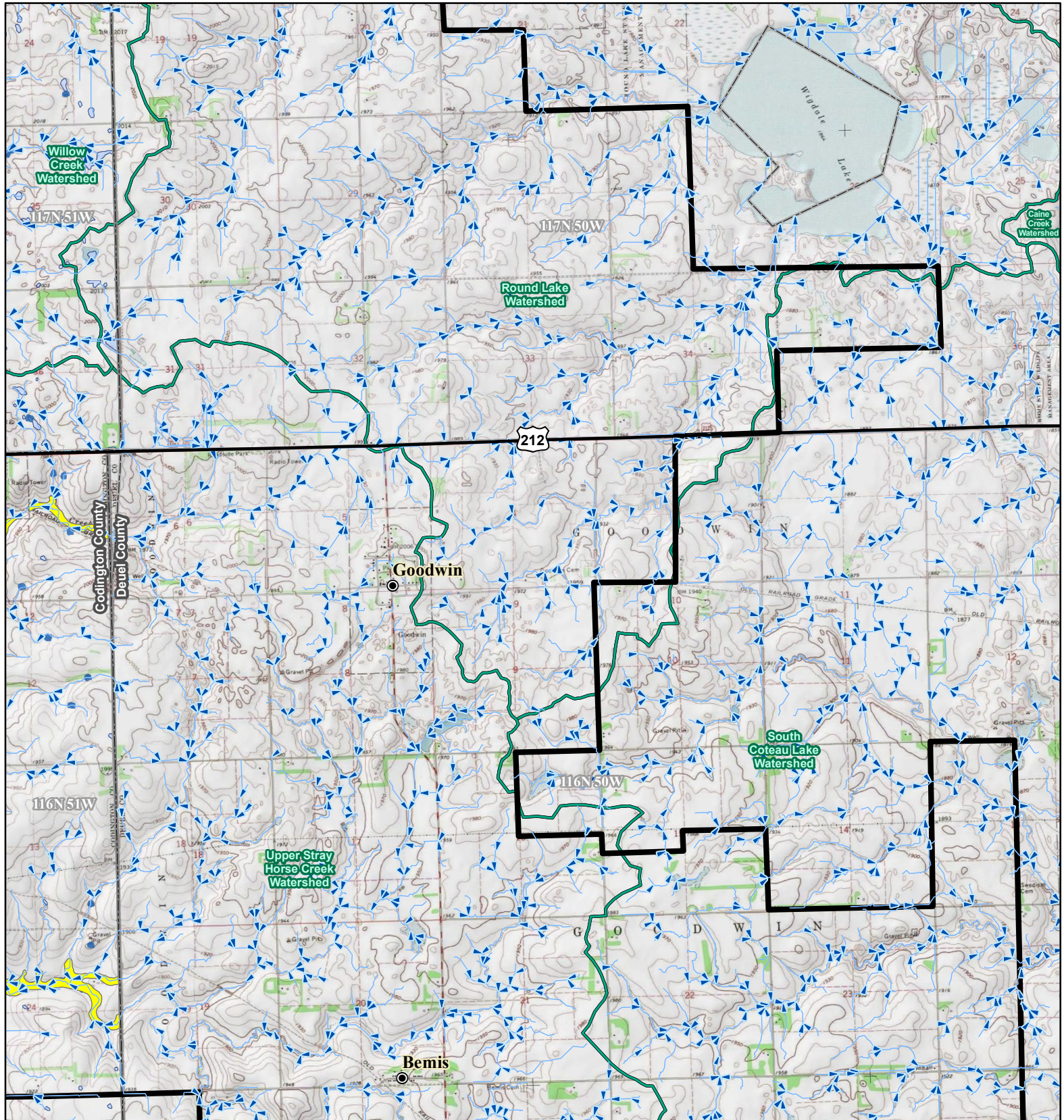
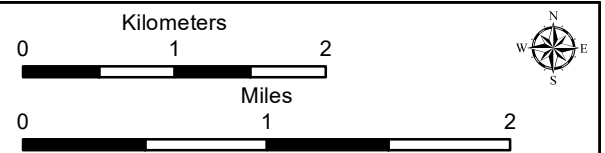
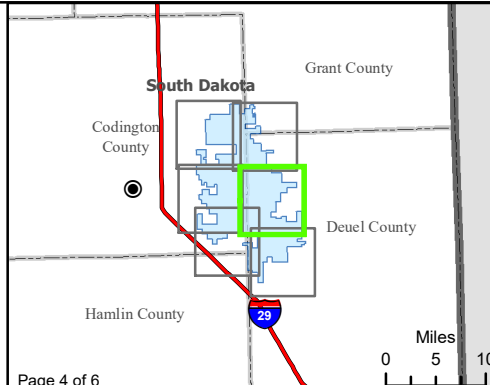


Figure 12. Water Resources

Crowned Ridge II Wind Farm

- Intersection of Floodplain and Project Infrastructure
- City
- U.S. Highway
- State Highway
- Flow Direction
- South Dakota Beneficial Use Stream
- South Dakota Beneficial Use Lake
- Watershed Boundary (HUC12)
- Project Boundary
- County Boundary
- Township/Range Boundary
- FEMA Flood Zone**
- A
- NWI Wetland**
- Freshwater Emergent Wetland
- Freshwater Forested/Shrub Wetland
- Lake, Pond, or Riverine Wetland



Base Map: USGS 7.5' Topographic Map
 Source: Esri ArcGIS Online service
 Quadrangle: Kranzburg (1970), Goodwin (1970),
 Kranzburg SW (1981), Bemis (1978)
 Township/Range: T117N, R51W & T116N, R51W &
 T117N, R50W & T116N, R50W
 Codington and Deuel Counties, South Dakota

Projection: NAD 1983 UTM Zone 14N



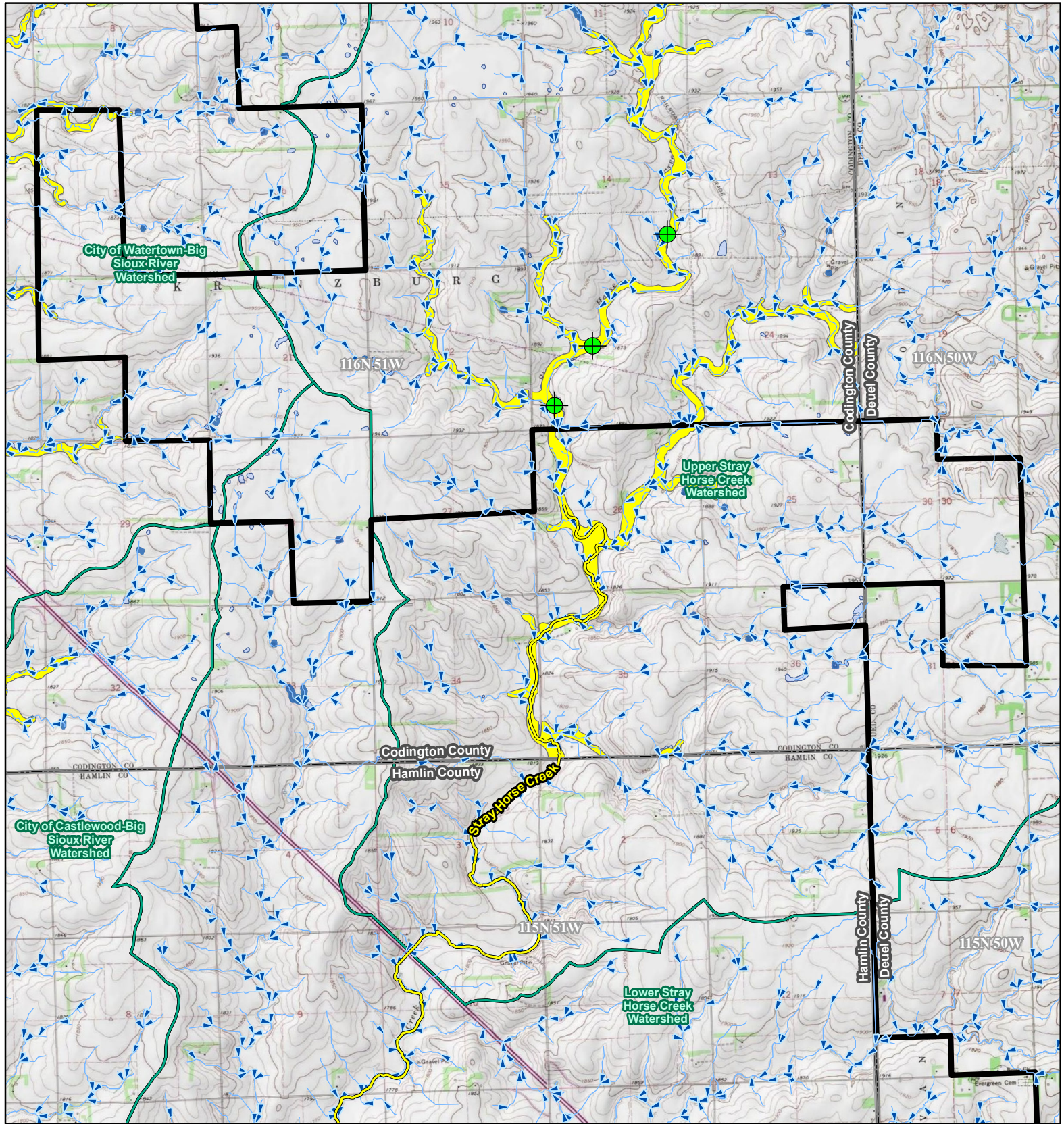
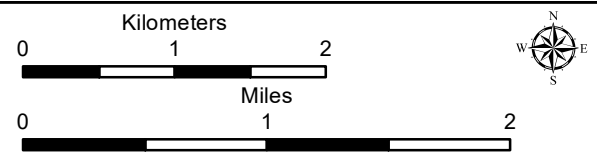
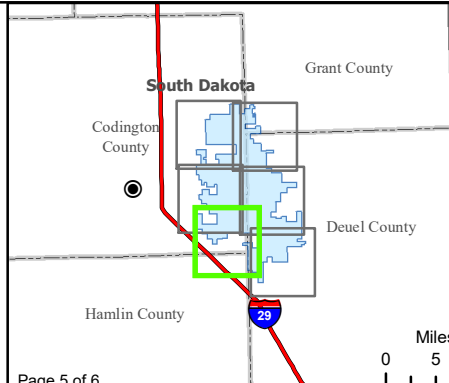


Figure 12. Water Resources

Crowned Ridge II Wind Farm

- Intersection of Floodplain and Project Infrastructure
- City
- U.S. Highway
- State Highway
- Flow Direction
- South Dakota Beneficial Use Stream
- South Dakota Beneficial Use Lake
- Watershed Boundary (HUC12)
- Project Boundary
- County Boundary
- Township/Range Boundary
- FEMA Flood Zone**
- A
- NWI Wetland**
- Freshwater Emergent Wetland
- Freshwater Forested/Shrub Wetland
- Lake, Pond, or Riverine Wetland



Base Map: USGS 7.5' Topographic Map
 Source: Esri ArcGIS Online service
 Quadrangle: Kranzburg SW (1981), Bemis (1978)
 Township/Range: T116N, R51W & T116N, R50W & T115N, R50W
 Codington and Deuel Counties, South Dakota

Projection: NAD 1983 UTM Zone 14N



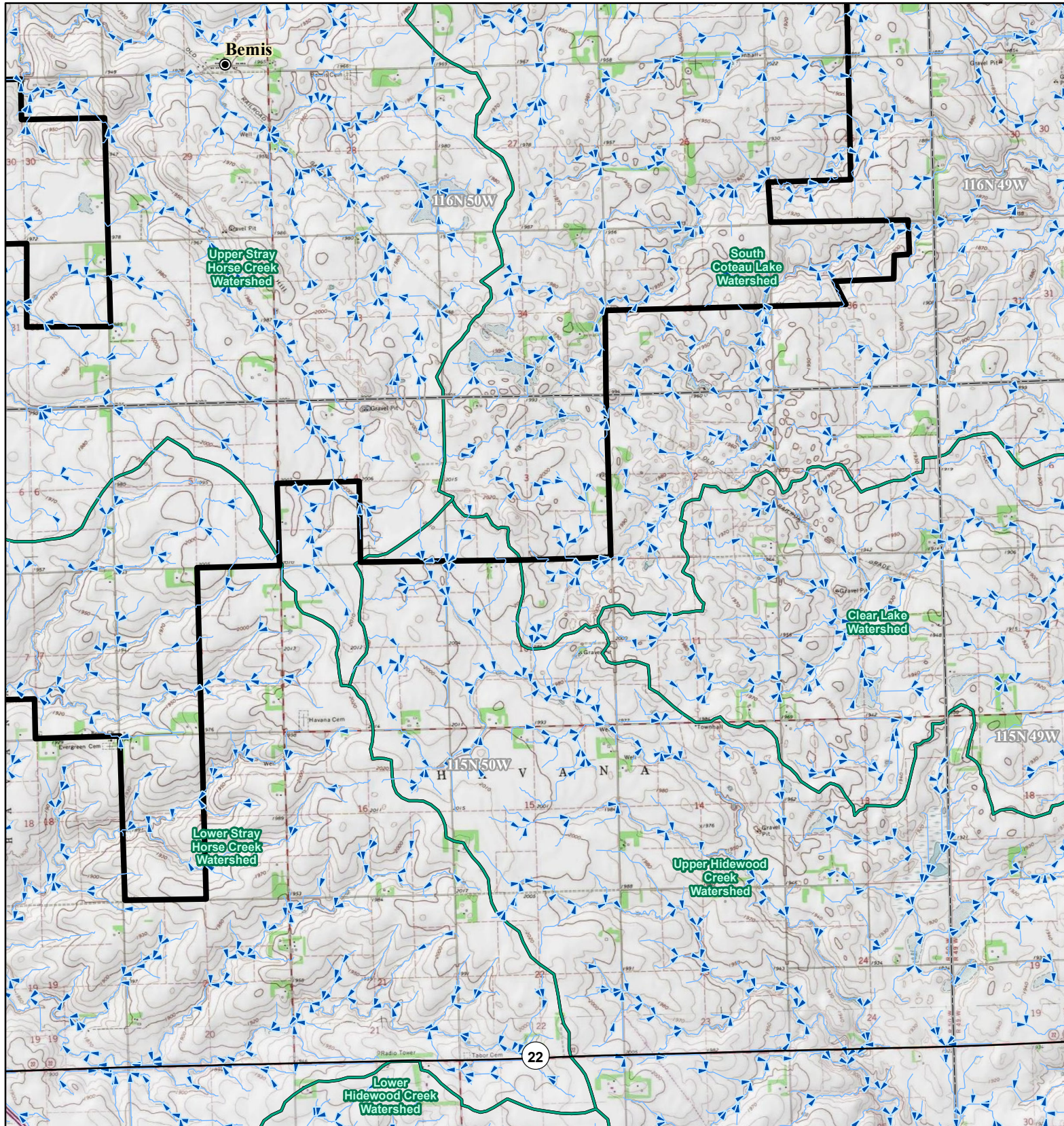
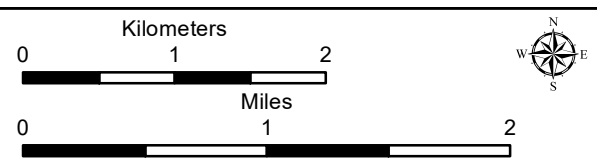
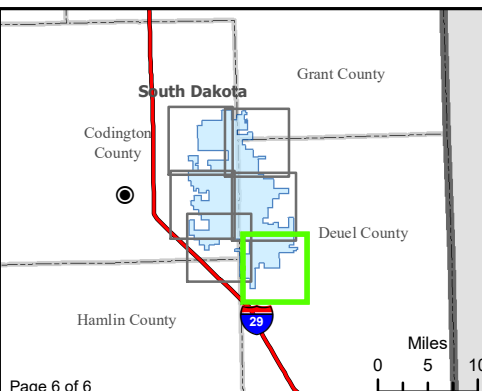


Figure 12. Water Resources
Crowned Ridge II Wind Farm

- Intersection of Floodplain and Project Infrastructure
- City
- U.S. Highway
- State Highway
- Flow Direction
- South Dakota Beneficial Use Stream
- South Dakota Beneficial Use Lake
- Watershed Boundary (HUC12)
- Project Boundary
- County Boundary
- Township/Range Boundary
- NWI Wetland**
- Freshwater Emergent Wetland
- Freshwater Forested/Shrub Wetland
- Lake, Pond, or Riverine Wetland



Base Map: USGS 7.5' Topographic Map
 Source: Esri ArcGIS Online service
 Quadrangle: Kranzburg SW (1981), Bemis (1978)
 Township/Range: T116N, R50W & T115N, R50W
 Deuel County, South Dakota

Projection: NAD 1983 UTM Zone 14N

