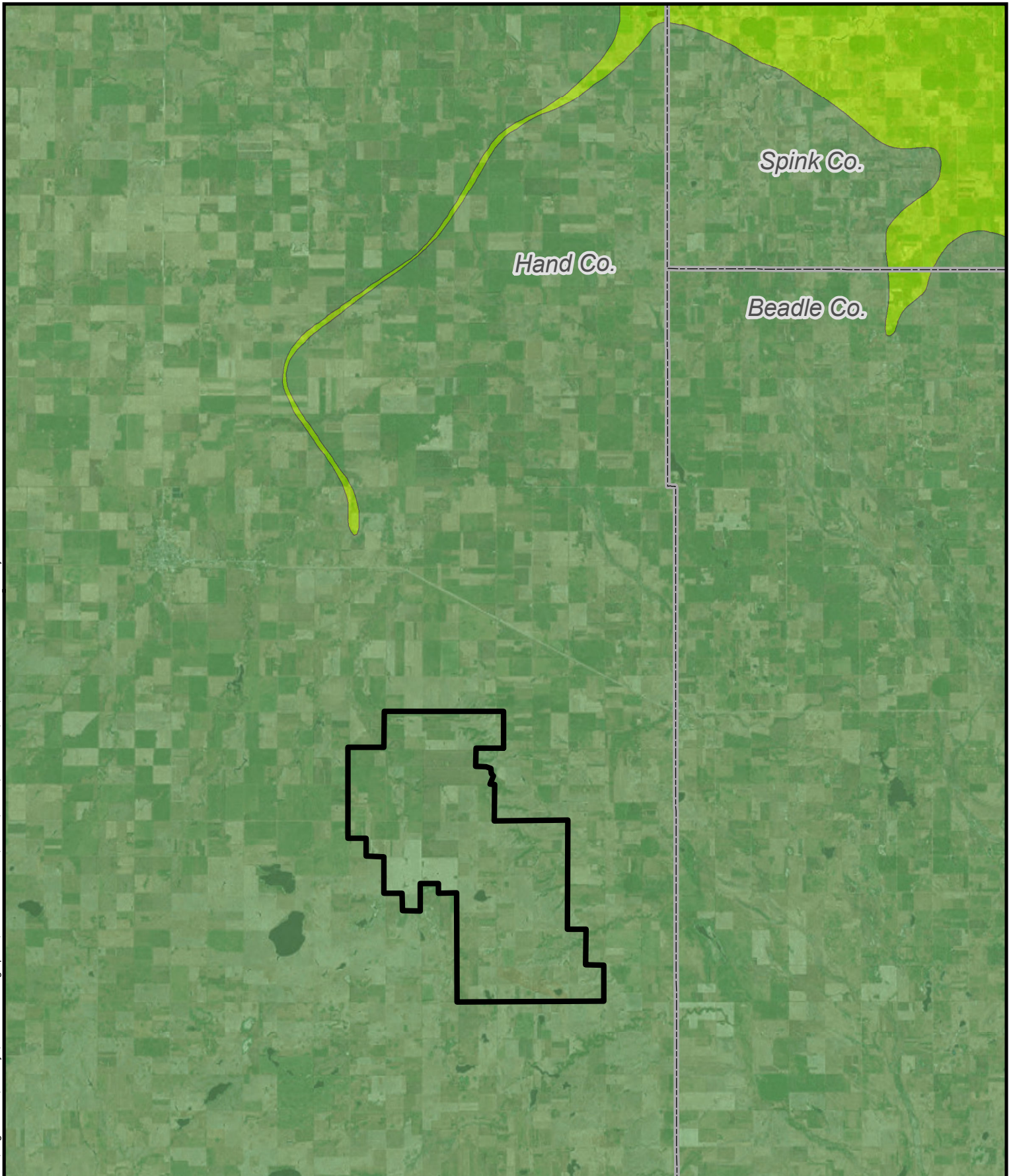


Path: \\moddfs\resources\Local\Clients\KCM\ENR\Scout\CleanEnr\103828\_SweetlandWind\Wind\ArcGIS\Geospatial\DataFiles\ArcDocs\PUC\_App\Figure\_A7-Bedrock\_Geology.mxd  
COPYRIGHT © 2019 BURNS & McDONNELL ENGINEERING COMPANY, INC.  
Service Layer Credits: Source: Esri, DigitalGlobe, GeoEye, Earthstar Geographics, CNES/Airbus DS, USDA, USGS, AeroGRID, IGN, and the GIS User Community



-  Project Area
-  County Boundary
-  Niobrara Formation
-  Pierre Shale



0 1.75 3.5  
Miles



Figure A-7c  
Bedrock Geology  
Sweetland Wind Farm, LLC  
Hand County, South Dakota