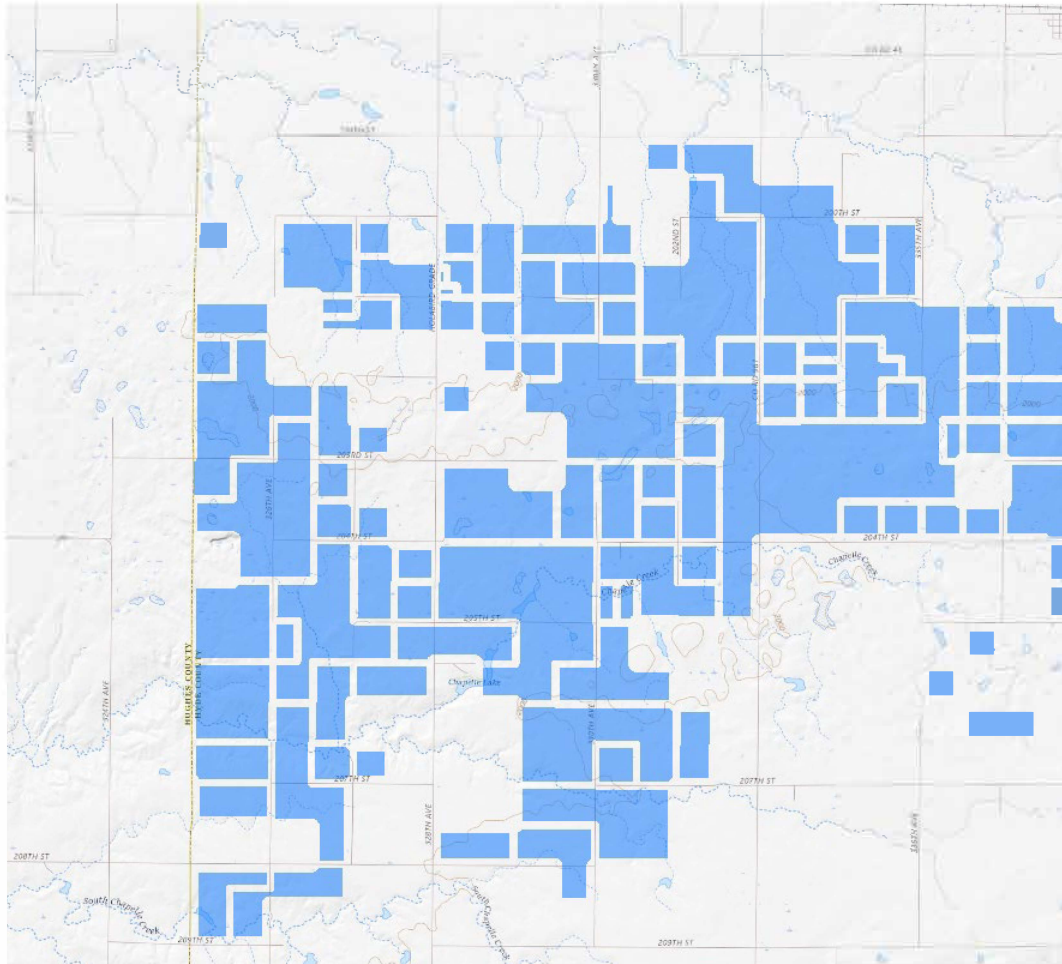


Appendix B
Usable Area Slideshow

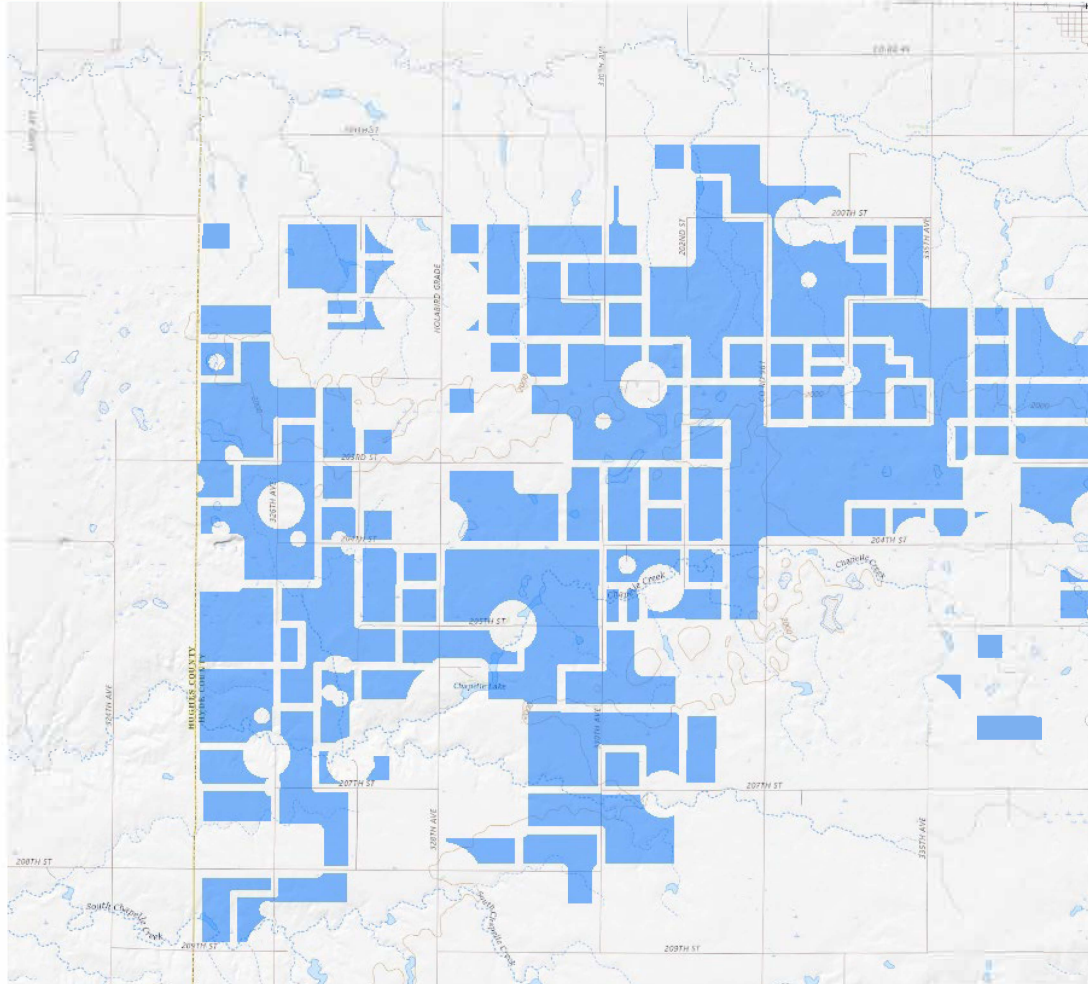
Useable Turbine Area

- The purpose of this slide deck is to provide a graphic example of the area available to propose wind turbines for the Triple H Wind Project after applicable setbacks and constraints are included.
- The setbacks account for setbacks that are defined in the Hyde County Zoning Ordinance as well as other setbacks that Engie incorporates into all project layouts.
- The easement area consists of 52,812 acres.
- After all setbacks are accounted for only 12,408 acres of the original easement area are available to place wind turbines, representing over a 76% decrease in area.

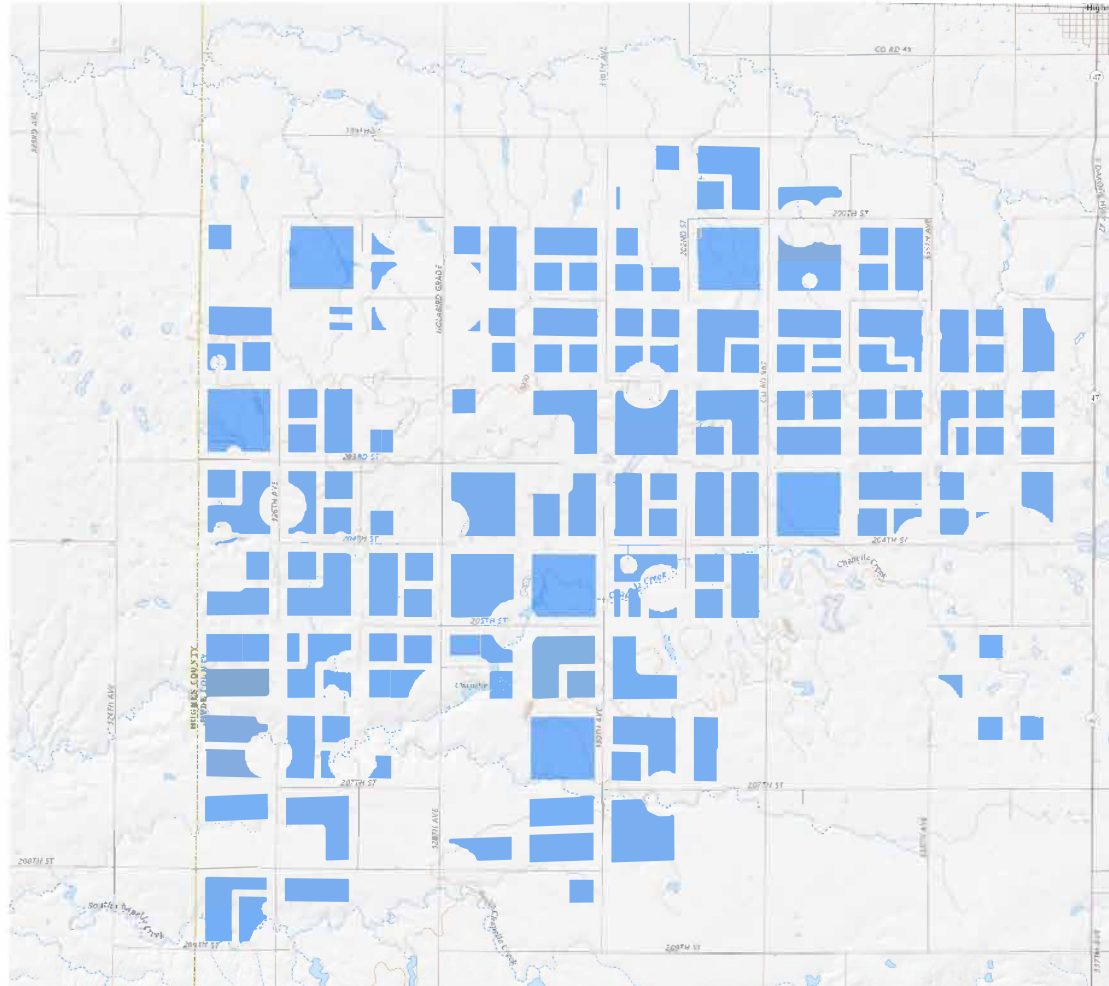
Step 2 – Property Line Setbacks



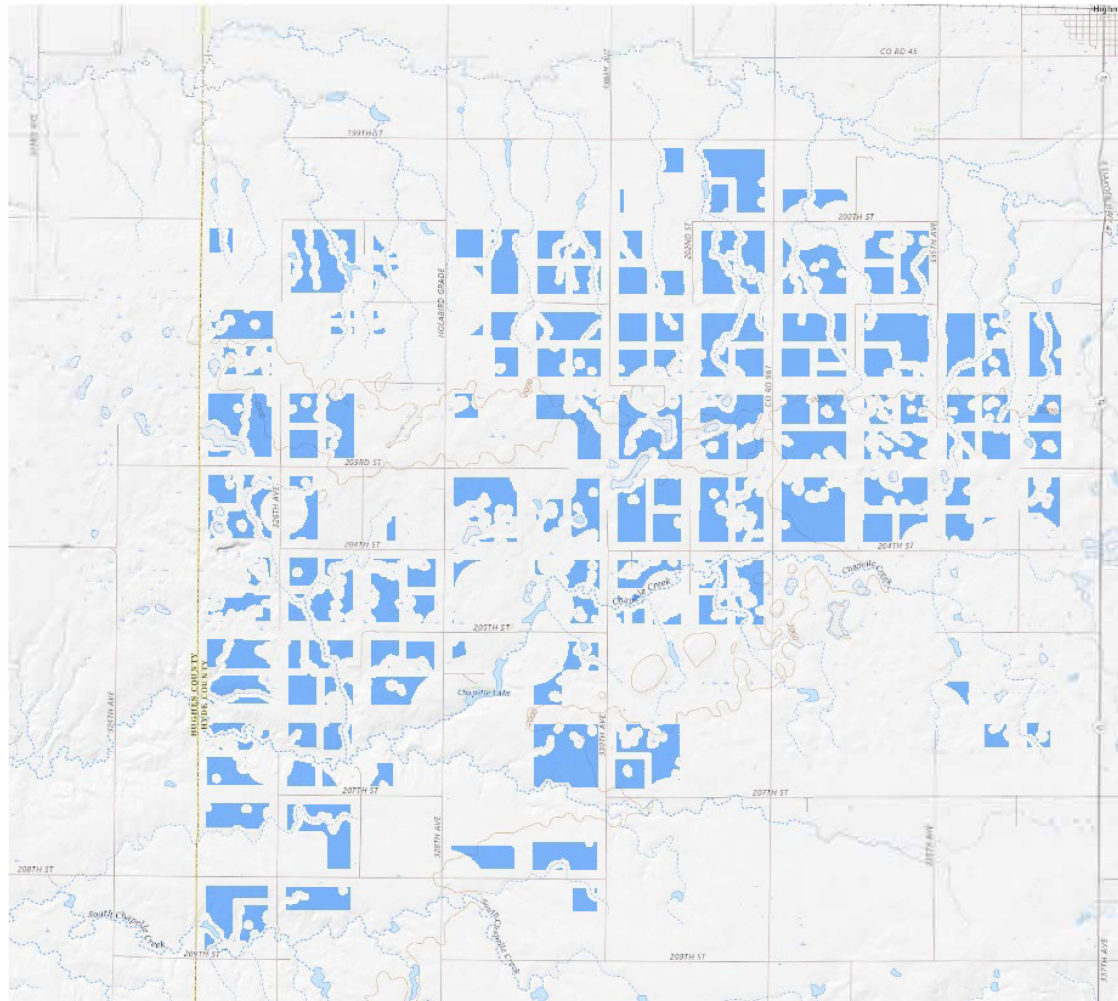
Step 3 – Setbacks from Structures and Residences



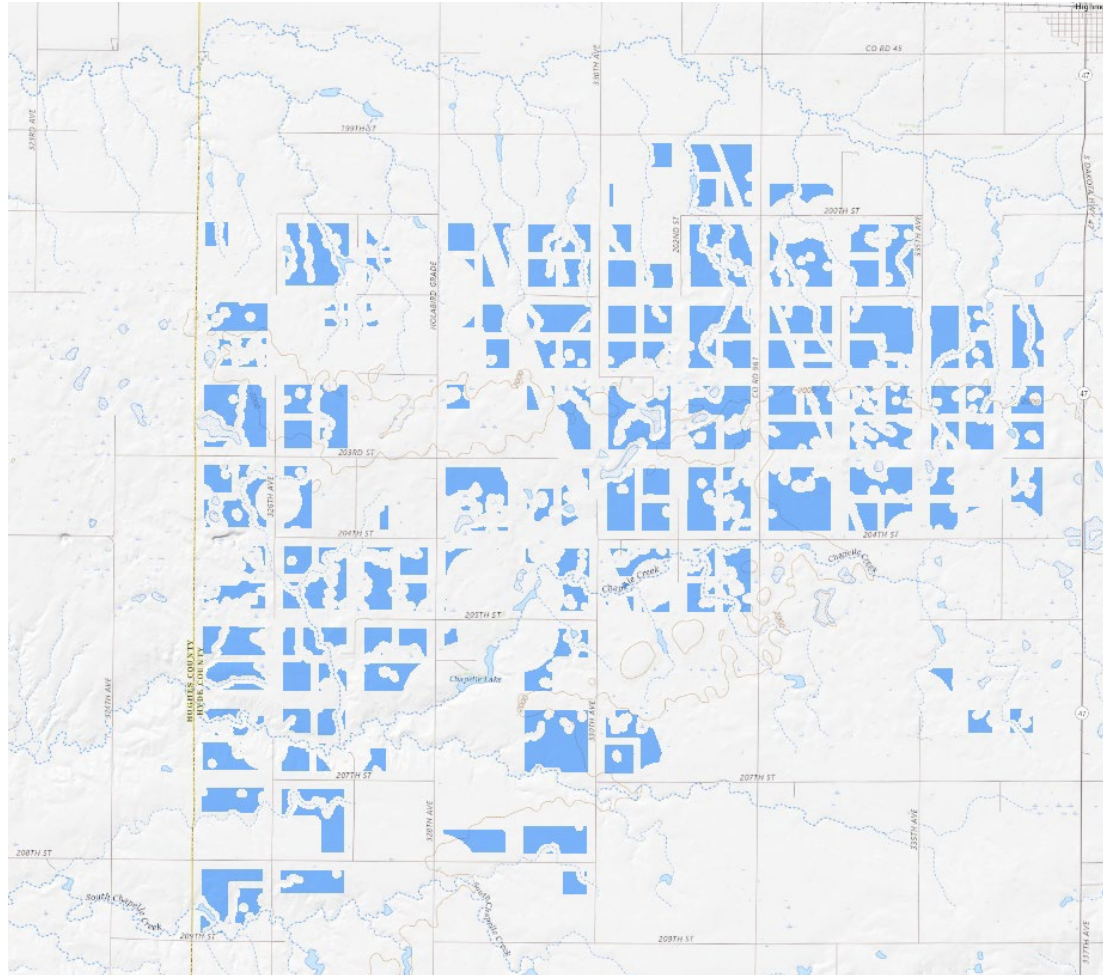
Step 4 – Setbacks from Roads, Highways and Section Lines



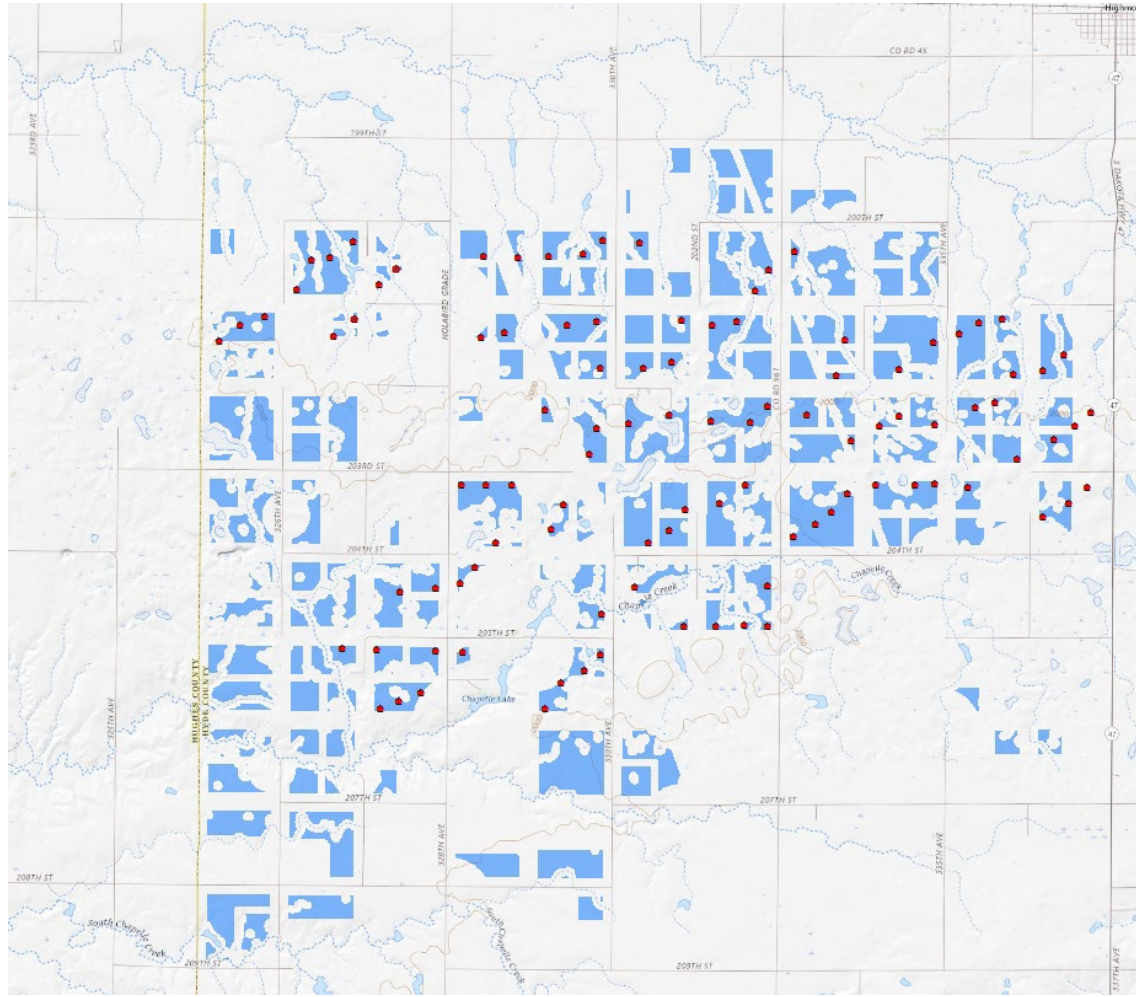
Step 4 – Setbacks from Environmental Constraints



Step 5 – Setbacks from Existing Infrastructure

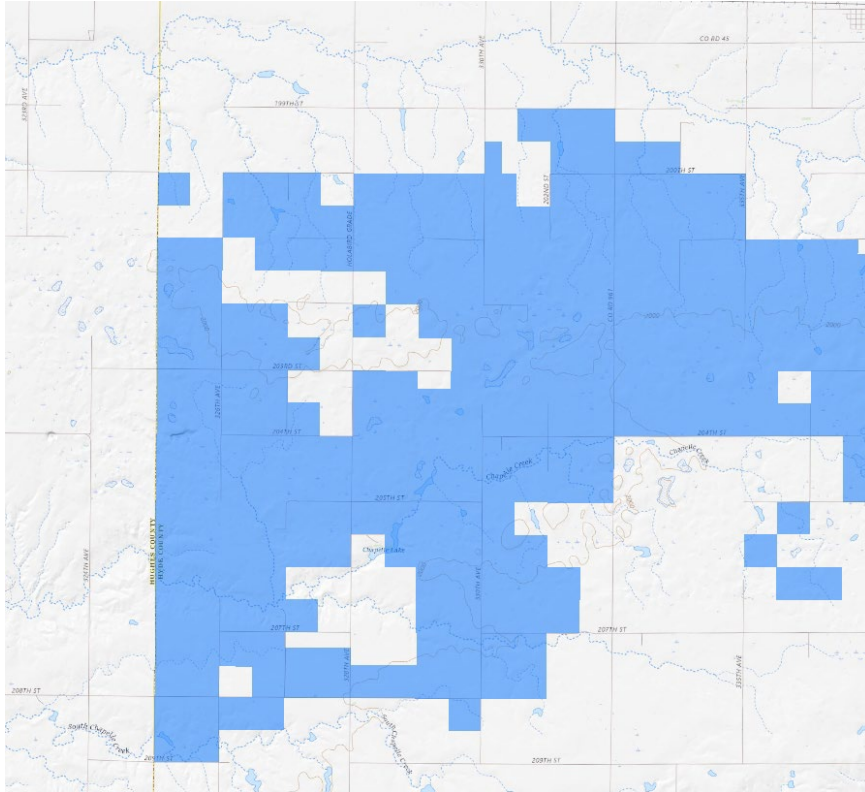


Step 5 – Final Proposed Layout



Triple H Wind Project – Final Useable Turbine Area

Land Under Easement – 52,812 Acres



Final Useable Turbine Area – 12,408 Acres

