

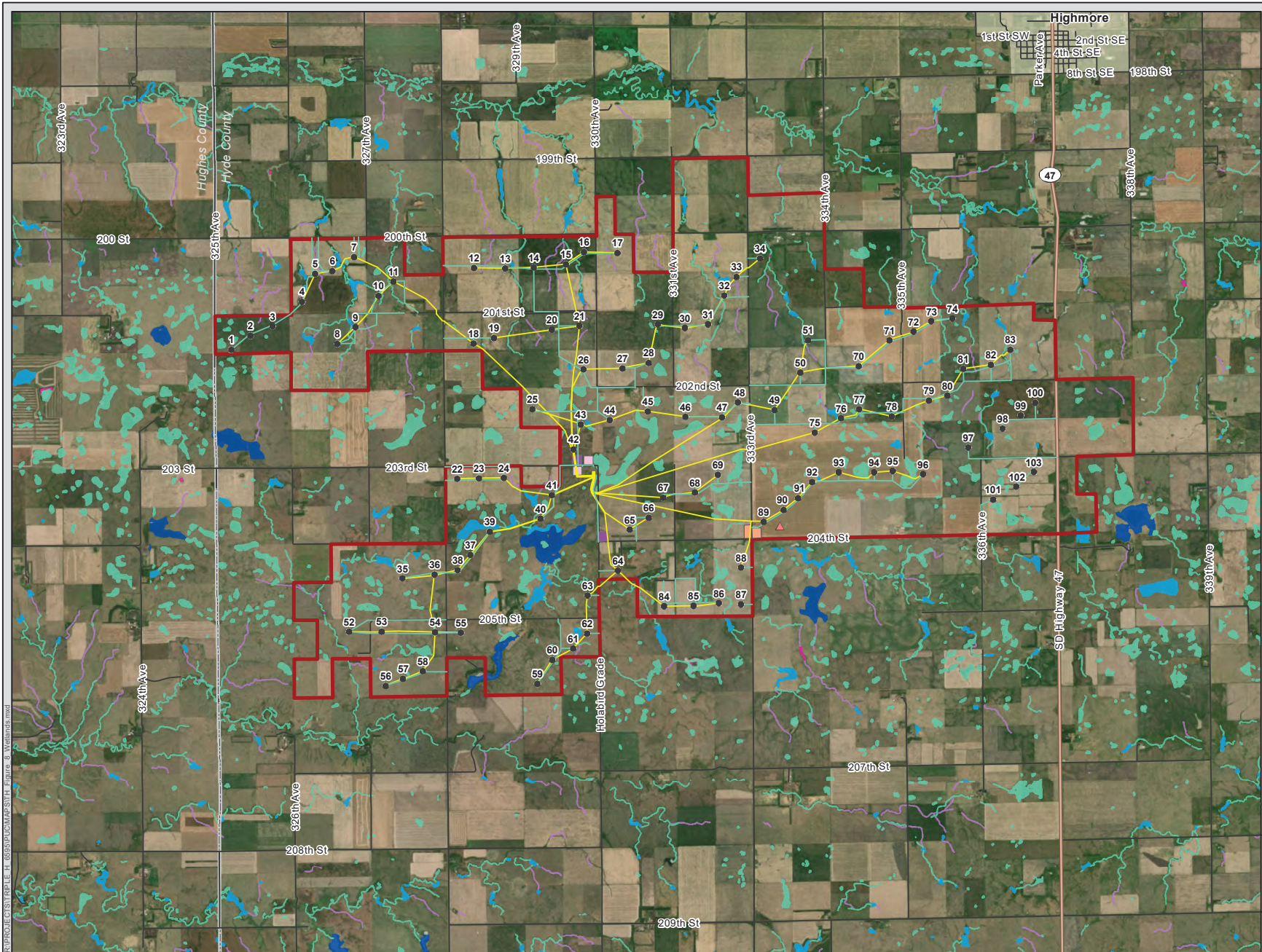


Triple H Wind Project

Figure 8 Wetlands

Hyde County, South Dakota

- Project Area
 - Proposed Turbine
 - Potential Permanent MET Tower Location
 - Proposed Access Road
 - Proposed Collector Line
 - Potential Collection Substation Location
 - Potential Interconnection Switching Station Location
 - Potential Laydown Area Location
 - Municipal Boundary
 - County Boundary
 - State Highway
 - Local Road
- NWI Wetland Type
- Freshwater Emergent Wetland
 - Freshwater Pond
 - Lake
 - Riverine
 - Digitized (West)



R:\PROJECTS\Triple H Wind\GIS\Map_Series_8_Vetronics.mxd