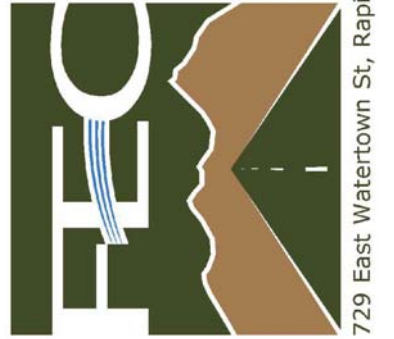




Prepared For:
 • Civil Engineering
 • Geospatial Solutions
 • Water Resources
 • Transportation
 • Land Surveying
 729 East Watertown St., Rapid City, SD 57701 ~ Phone: (605) 343-3311



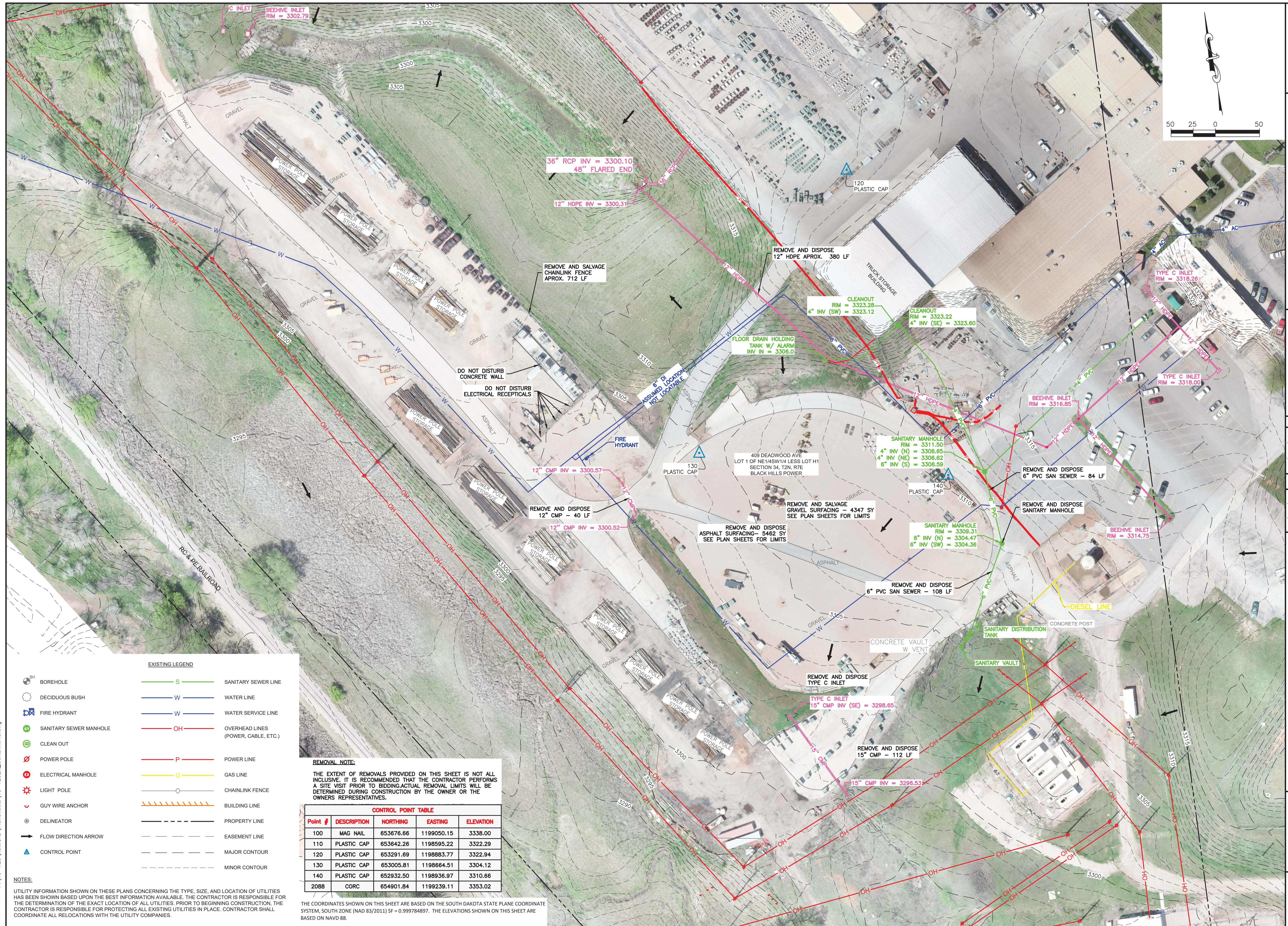
Prepared By:
 NOT FOR CONSTRUCTION

Scale:
 Designed By: DAL
 Drawn By: BDH/ERK
 Design Date: JUNE 2018
 Print Date: 06-29-18
 Internal Job No: 18-123
 Surveyed By: JUB/KQH
 Survey Date: MAY 2018
 Revisions:

WEST RAPID CITY SUBSTATION AND STORAGE YARD IMPROVEMENTS
BLACK HILLS ENERGY
RAPID CITY, SD

Sheet Title:
EXISTING CONDITIONS AND SITE DEMOLITION

Sheet:
C-101



EXISTING LEGEND

	BH	BOREHOLE		S	SANITARY SEWER LINE
		DECIDUOUS BUSH		W	WATER LINE
		FIRE HYDRANT		W	WATER SERVICE LINE
		SANITARY SEWER MANHOLE		OH	OVERHEAD LINES (POWER, CABLE, ETC.)
		CLEAN OUT		P	POWER LINE
		POWER POLE		G	GAS LINE
		ELECTRICAL MANHOLE			CHAINLINK FENCE
		LIGHT POLE			BUILDING LINE
		GUY WIRE ANCHOR			PROPERTY LINE
		DELINEATOR			EASEMENT LINE
		FLOW DIRECTION ARROW			MAJOR CONTOUR
		CONTROL POINT			MINOR CONTOUR

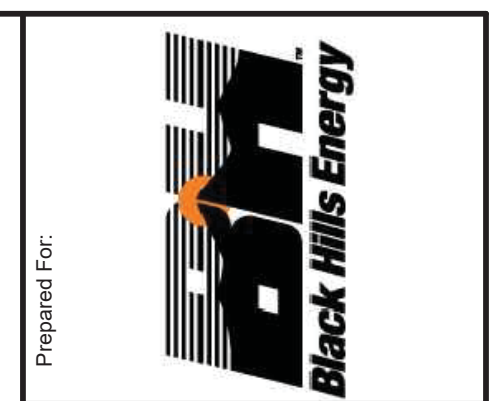
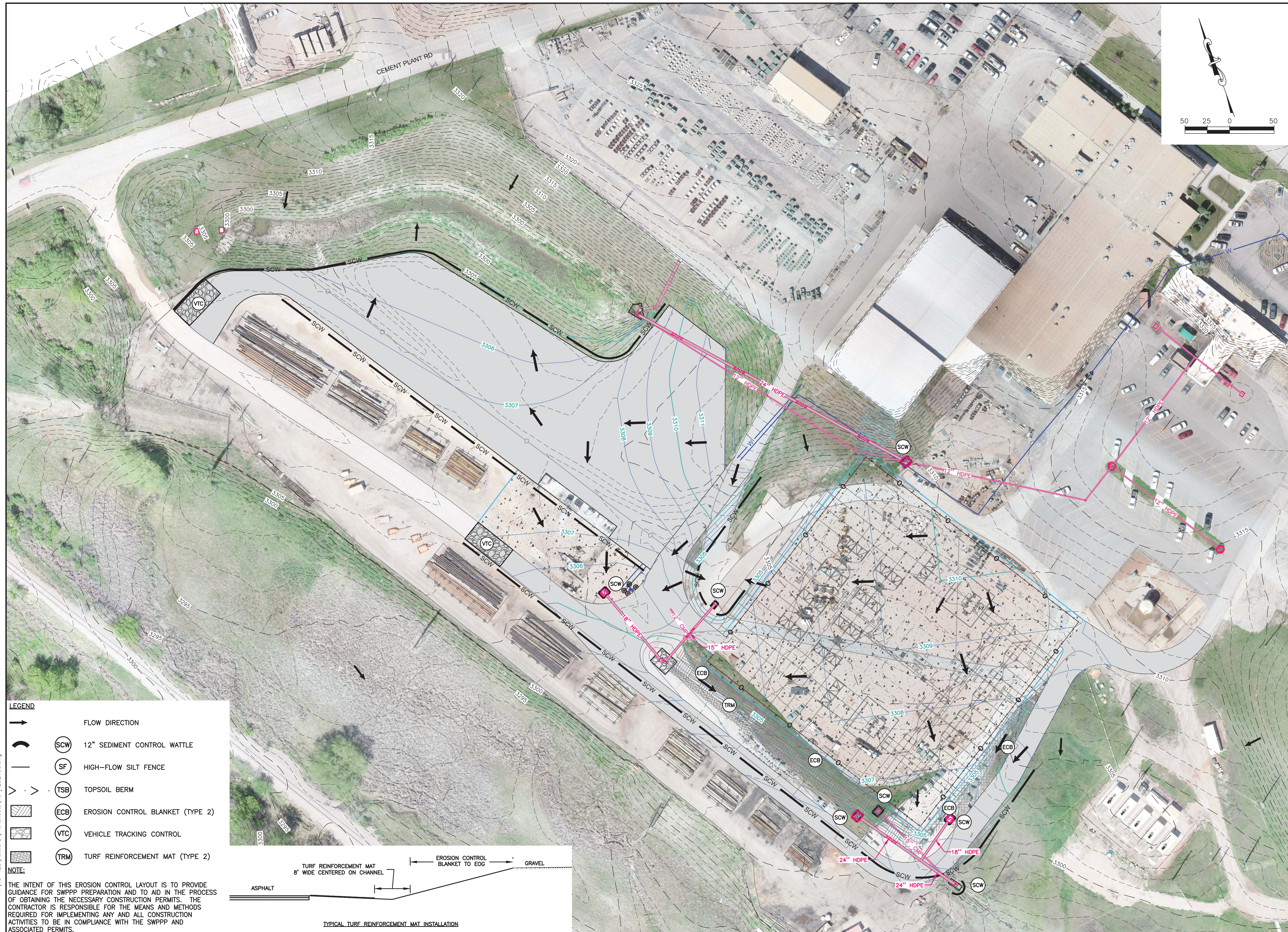
REMOVAL NOTE:
 THE EXTENT OF REMOVALS PROVIDED ON THIS SHEET IS NOT ALL INCLUSIVE. IT IS RECOMMENDED THAT THE CONTRACTOR PERFORMS A SITE VISIT PRIOR TO BIDDING. ACTUAL REMOVAL LIMITS WILL BE DETERMINED DURING CONSTRUCTION BY THE OWNER OR THE OWNERS REPRESENTATIVES.

CONTROL POINT TABLE

Point #	DESCRIPTION	NORTHING	EASTING	ELEVATION
100	MAG NAIL	653676.66	1199050.15	3338.00
110	PLASTIC CAP	653642.26	1198595.22	3322.29
120	PLASTIC CAP	653291.69	1198883.77	3322.94
130	PLASTIC CAP	653005.81	1198664.51	3304.12
140	PLASTIC CAP	652932.50	1198936.97	3310.66
208B	CORC	654901.84	1199239.11	3353.02

THE COORDINATES SHOWN ON THIS SHEET ARE BASED ON THE SOUTH DAKOTA STATE PLANE COORDINATE SYSTEM, SOUTH ZONE (NAD 83/2011) SF = 0.999784897. THE ELEVATIONS SHOWN ON THIS SHEET ARE BASED ON NAVD 88.

06-29-18 F:\18-123\AutoCAD\PlanSheets\18-123EX_CONDITIONS.dwg



Prepared For:
 • Civil Engineering
 • Geospatial Solutions
 • Water Resources
 • Transportation
 • Land Surveying
 729 East Watertown St. Rapid City, SD 57701 ~ Phone: (605) 343-3311



Prepared By:
NOT FOR CONSTRUCTION

Scale:	Designed By: DAL	Drawn By: BDH/ERK
	Design Date: JUNE 2018	Print Date: 06-29-18
	Internal Job No: 18-123	
	Surveyed By: JUB/KQH	Survey Date: MAY 2018
Revisions:		

WEST RAPID CITY SUBSTATION AND STORAGE YARD IMPROVEMENTS
BLACK HILLS ENERGY
RAPID CITY, SD

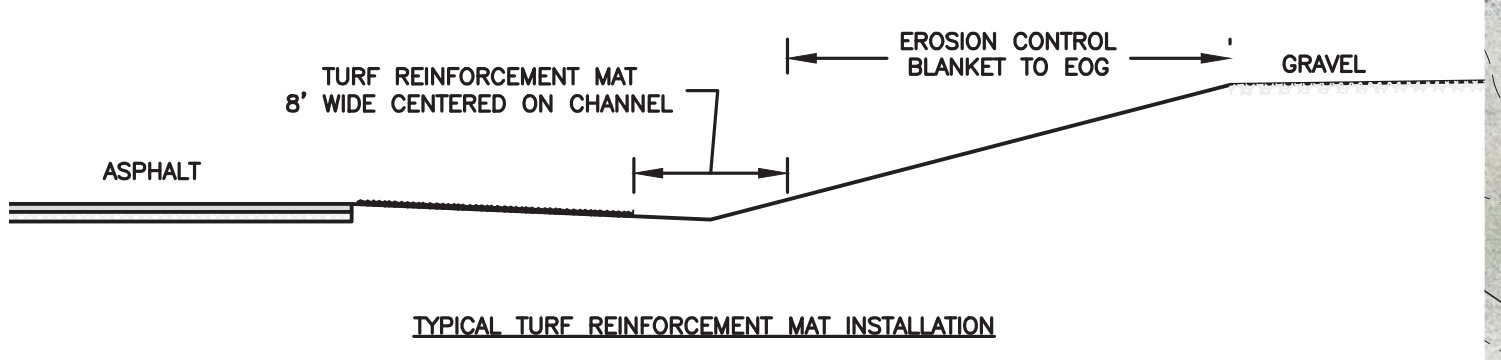
Sheet Title:
EROSION CONTROL PLAN

Sheet:
C-202

LEGEND

	FLOW DIRECTION
	12" SEDIMENT CONTROL WATTLE
	HIGH-FLOW SILT FENCE
	TOPSOIL BERM
	EROSION CONTROL BLANKET (TYPE 2)
	VEHICLE TRACKING CONTROL
	TURF REINFORCEMENT MAT (TYPE 2)

NOTE:
 THE INTENT OF THIS EROSION CONTROL LAYOUT IS TO PROVIDE GUIDANCE FOR SWPPP PREPARATION AND TO AID IN THE PROCESS OF OBTAINING THE NECESSARY CONSTRUCTION PERMITS. THE CONTRACTOR IS RESPONSIBLE FOR THE MEANS AND METHODS REQUIRED FOR IMPLEMENTING ANY AND ALL CONSTRUCTION ACTIVITIES TO BE IN COMPLIANCE WITH THE SWPPP AND ASSOCIATED PERMITS.



06-29-18 F:\18-123\AutoCAD\PlanSheets\18-123EROS.dwg