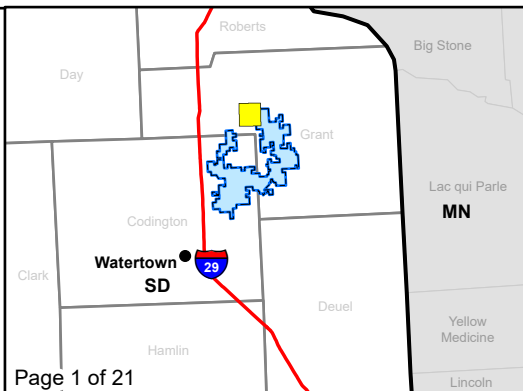


CRI PUC Compliance
Crowned Ridge Wind Farm

- Primary Turbine
- Alternate Turbine
- ⊕ MET Tower
- City
- Access Road
- Alternate Access Road
- Collection Line
- Crane Path
- Railroad
- O&M Facility/ Substation
- Batch Plant
- Laydown Yard
- Project Boundary
- County Boundary
- Participating Landowner



Kilometers

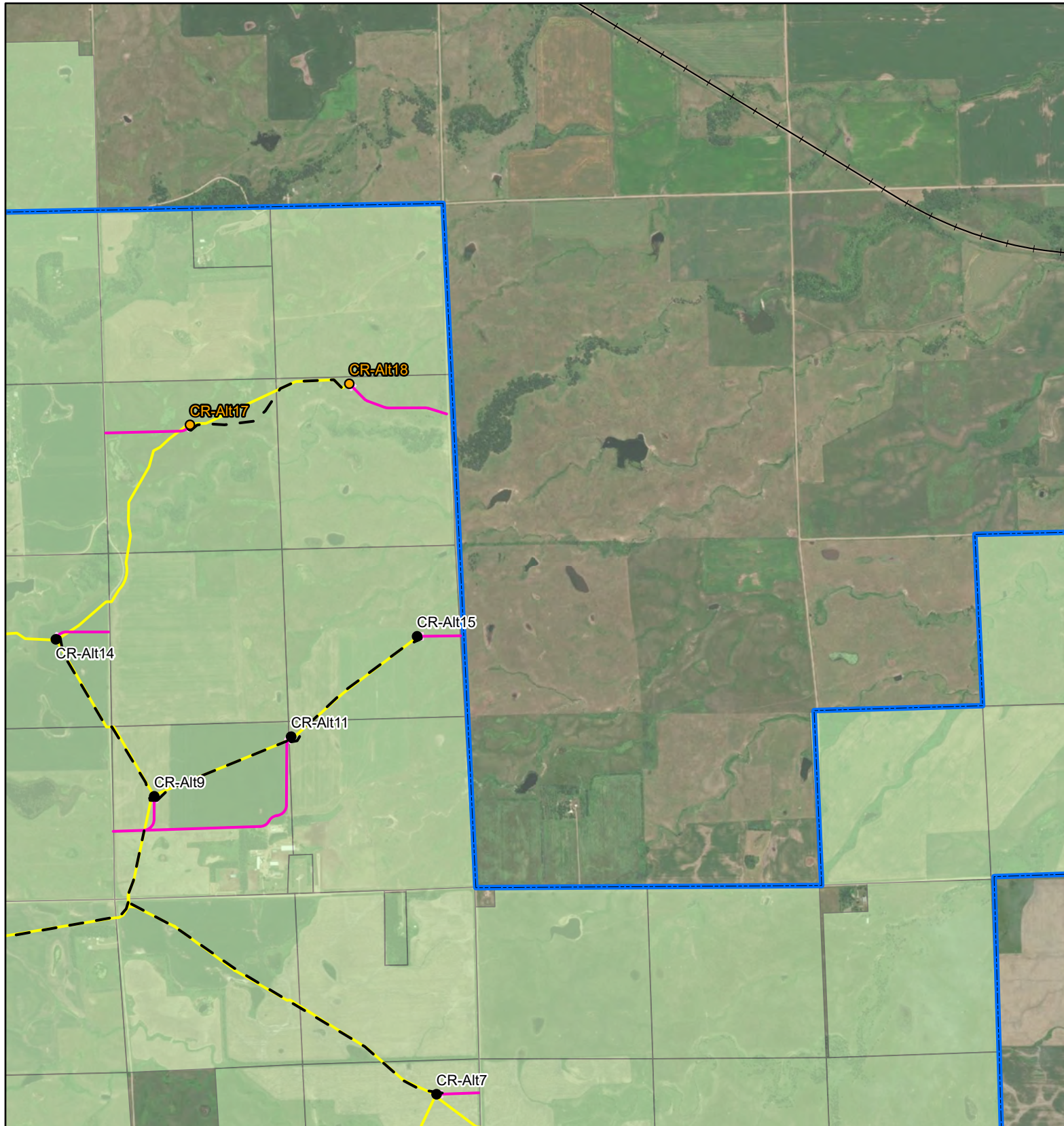
0 0.5 1

Miles

0 0.25 0.5

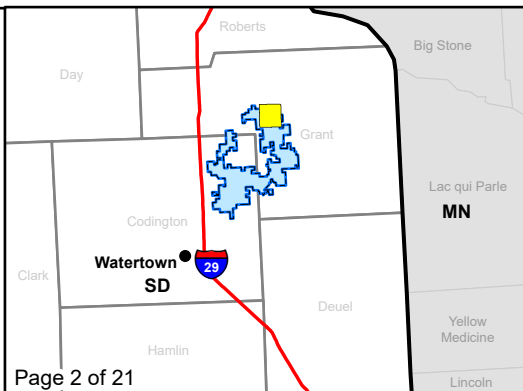
Service Layer Credits: Esri, HERE, Garmin, © OpenStreetMap contributors, and the GIS user community
 Quadrangle: Antelope Valley (1973), Twin Brooks (1973)
 Township/Range: T120N, R51W, T120N, R50W
 Grant County, South Dakota

SWCA
ENVIRONMENTAL CONSULTANTS



CRI PUC Compliance Crowned Ridge Wind Farm

- Primary Turbine
- Alternate Turbine
- ⊕ MET Tower
- ⊙ City
- Access Road
- Alternate Access Road
- Collection Line
- Crane Path
- Railroad
- O&M Facility/
Substation
- Batch Plant
- Laydown Yard
- Project Boundary
- County Boundary
- Participating Landowner



Kilometers

0 0.5 1

Miles

0 0.25 0.5

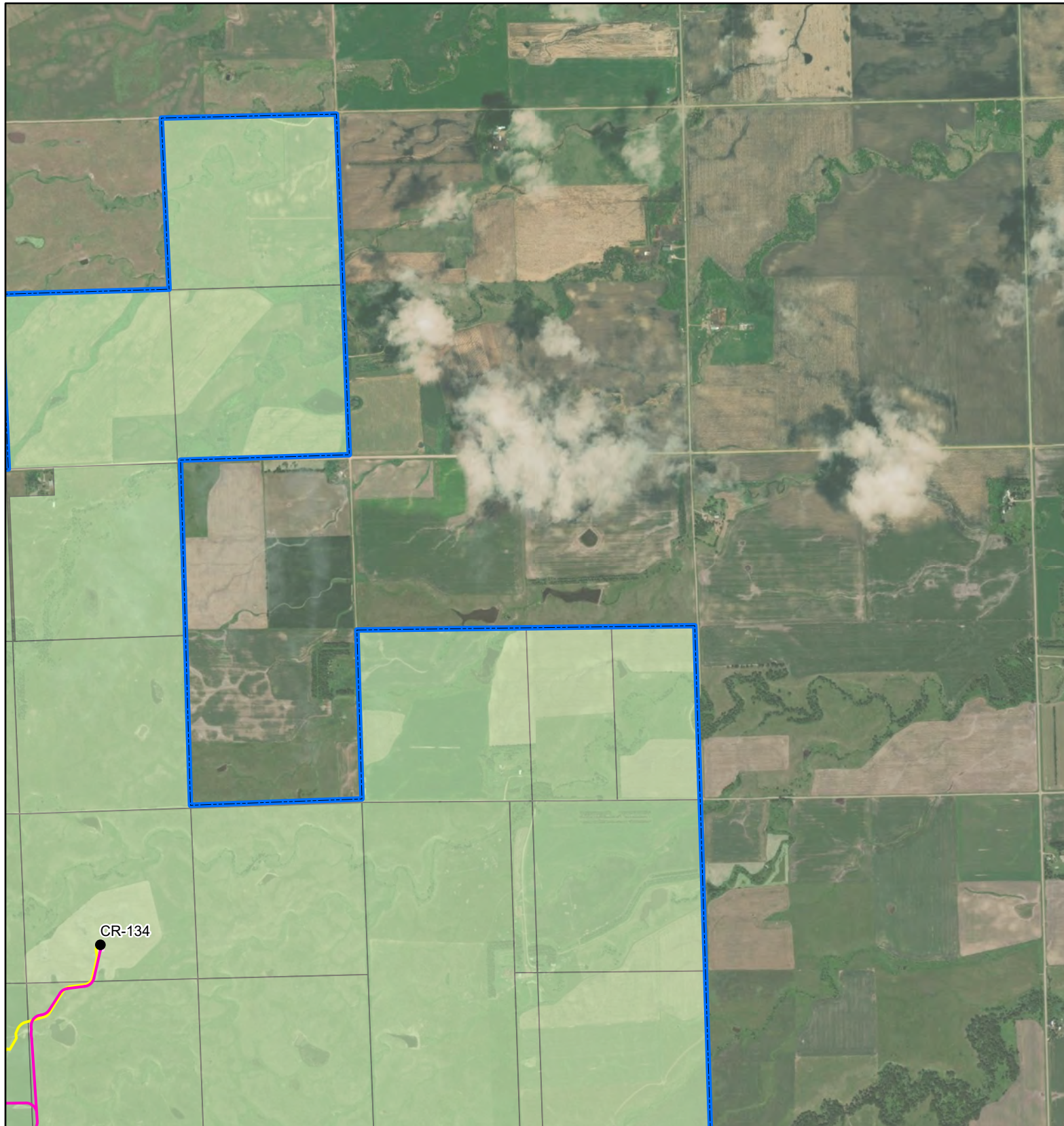
Service Layer Credits: Esri, HERE, Garmin,
© OpenStreetMap contributors, and the GIS user
community
Quadrangle: Twin Brooks (1973)

Township/Range: T120N, R50W

Grant County, South Dakota

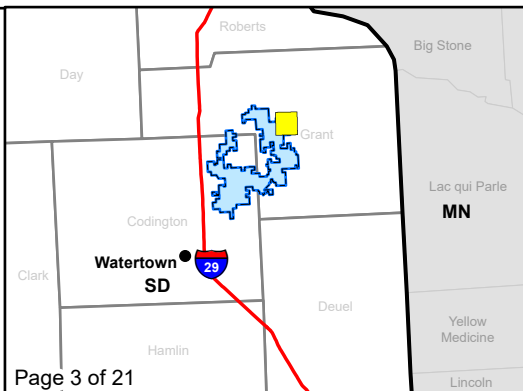
SWCA
ENVIRONMENTAL CONSULTANTS

Projection:



CRI PUC Compliance
Crowned Ridge Wind Farm

- Primary Turbine
- Alternate Turbine
- ⊕ MET Tower
- City
- Access Road
- Alternate Access Road
- Collection Line
- Crane Path
- Railroad
- O&M Facility/ Substation
- Batch Plant
- Laydown Yard
- Project Boundary
- County Boundary
- Participating Landowner



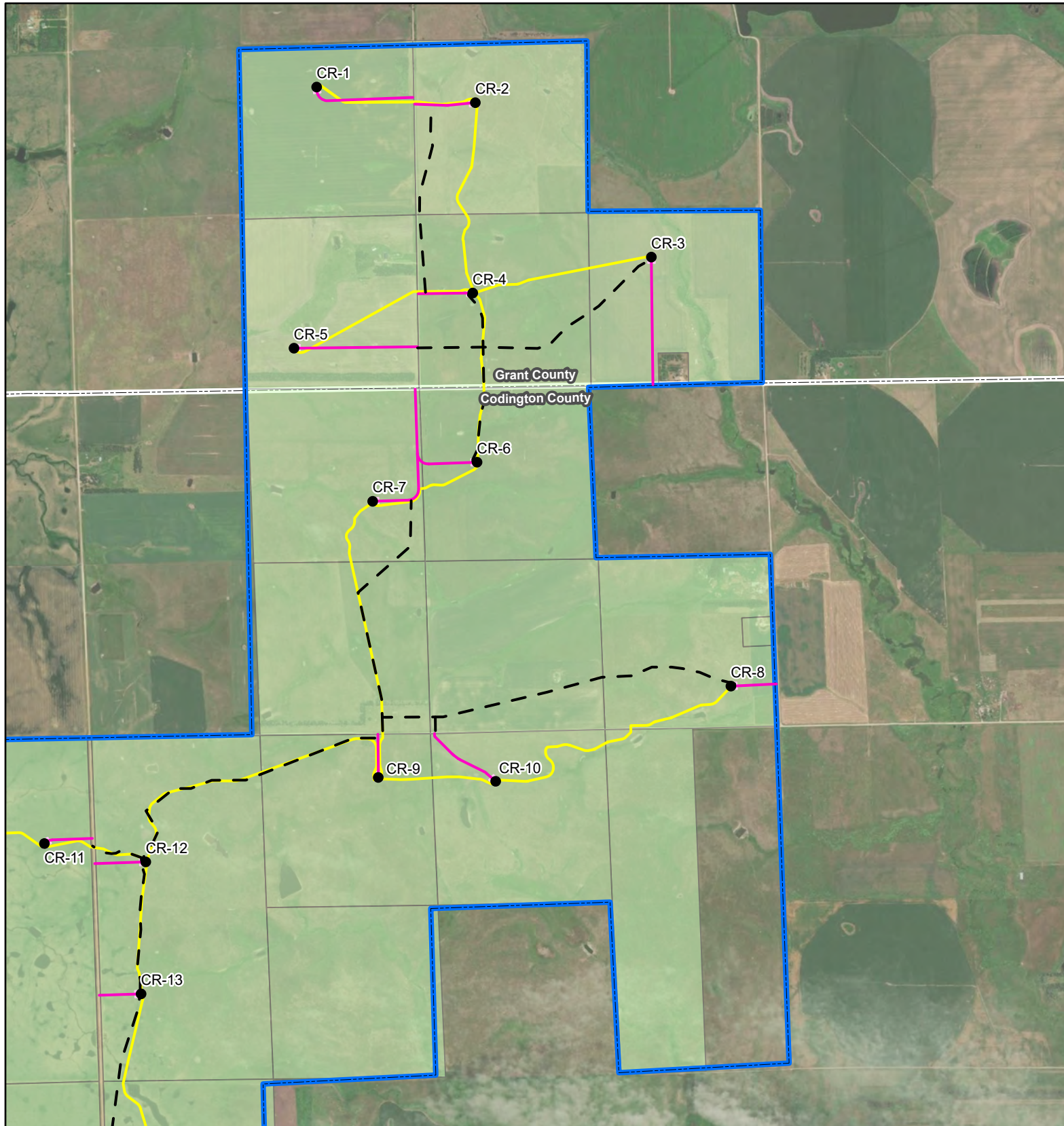
Kilometers
0 0.5 1

Miles
0 0.25 0.5

Service Layer Credits: Esri, HERE, Garmin, © OpenStreetMap contributors, and the GIS user community
 Quadrangle: Twin Brooks (1973)
 Township/Range: T120N, R50W
 Grant County, South Dakota

Projection:

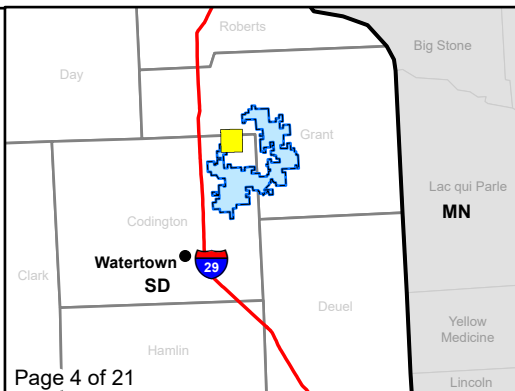




CRI PUC Compliance

Crowned Ridge Wind Farm

- Primary Turbine
- Alternate Turbine
- ⊕ MET Tower
- ⊙ City
- Access Road
- Alternate Access Road
- Collection Line
- Crane Path
- Railroad
- O&M Facility/ Substation
- Batch Plant
- Laydown Yard
- Project Boundary
- County Boundary
- Participating Landowner



Kilometers

0 0.5 1

Miles

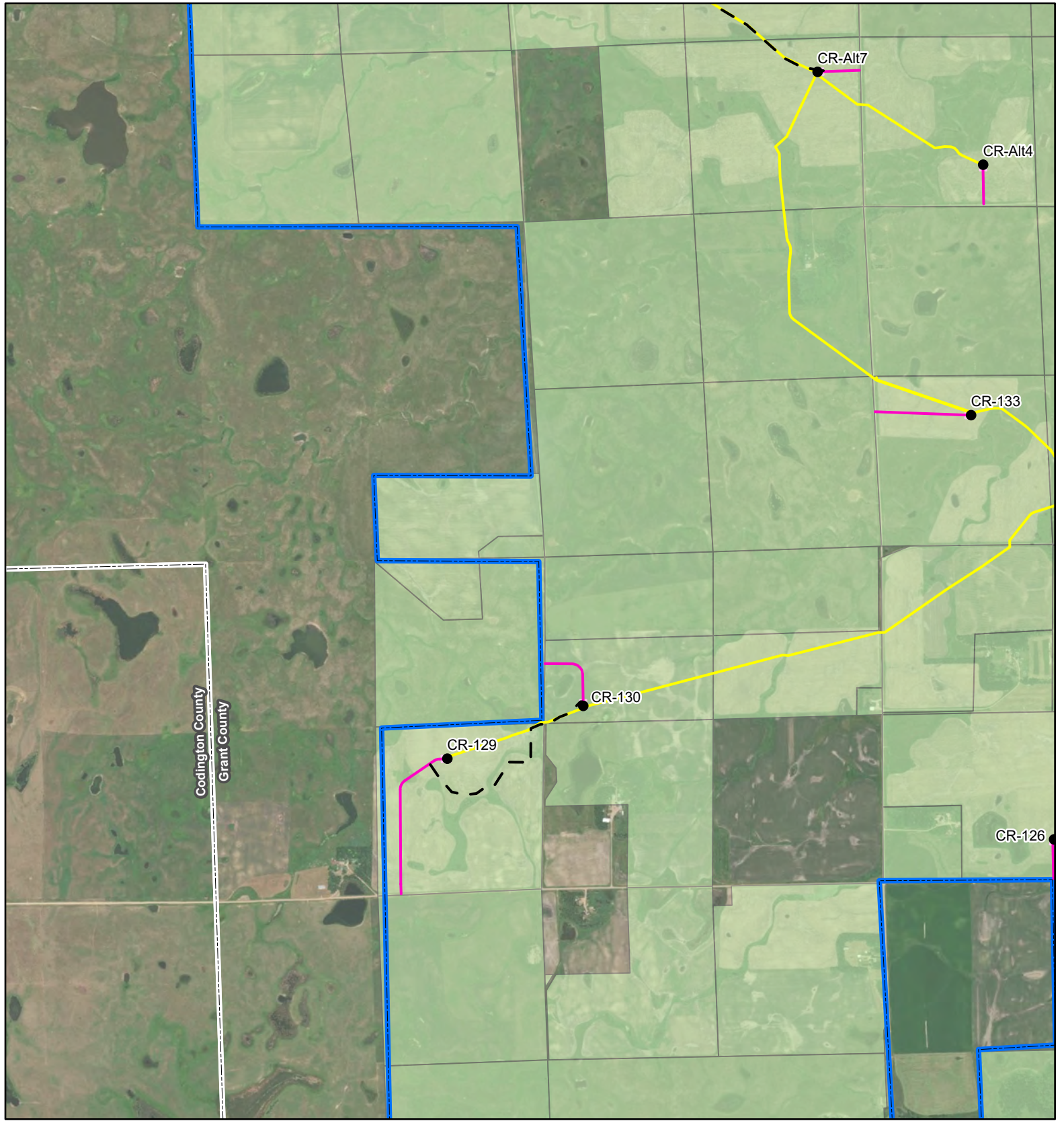
0 0.25 0.5

Service Layer Credits: Esri, HERE, Garmin, © OpenStreetMap contributors, and the GIS user community

Quadrangle: Antelope Valley (1973), South Shore (1973)

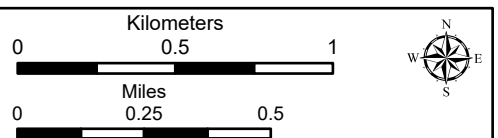
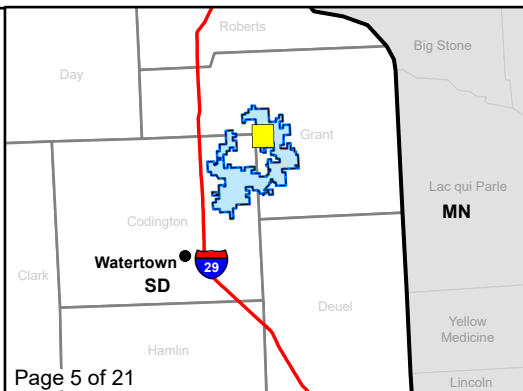
Township/Range: T120N, R51W, T119N, R51W, Codington and Grant Counties, South Dakota

SWCA
ENVIRONMENTAL CONSULTANTS



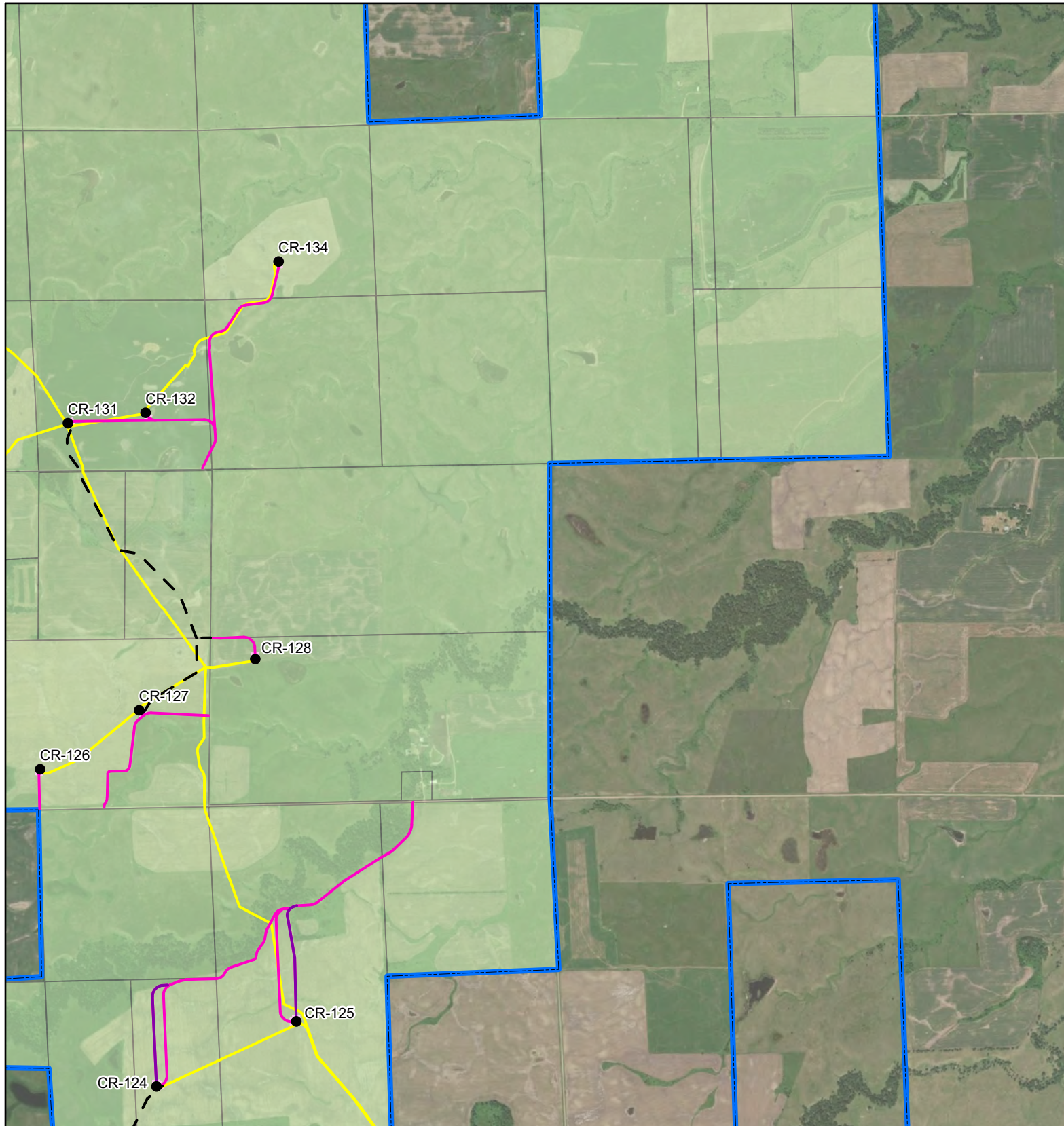
CRI PUC Compliance
Crowned Ridge Wind Farm

- Primary Turbine
- Alternate Turbine
- ⊕ MET Tower
- ⊙ City
- Access Road
- Alternate Access Road
- Collection Line
- Crane Path
- Railroad
- O&M Facility/ Substation
- Batch Plant
- Laydown Yard
- Project Boundary
- ⊡ County Boundary
- Participating Landowner



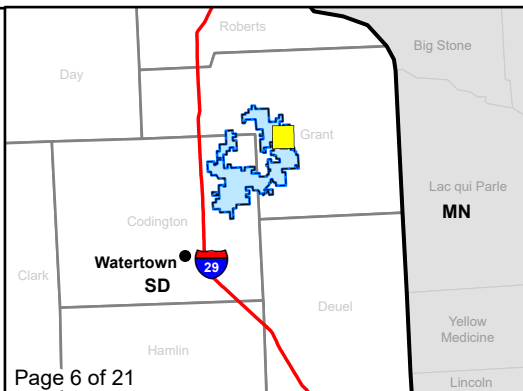
Service Layer Credits: Esri, HERE, Garmin, © OpenStreetMap contributors, and the GIS user community
 Quadrangle: Antelope Valley (1973), Twin Brooks (1973)
 Township/Range: T120N, R51W, T120N, R50W, T119N, R51W, T119N, R50W
 Codington and Grant Counties, South Dakota





CRI PUC Compliance
Crowned Ridge Wind Farm

- Primary Turbine
- Alternate Turbine
- ⊕ MET Tower
- City
- Access Road
- Alternate Access Road
- Collection Line
- Crane Path
- Railroad
- O&M Facility/ Substation
- Batch Plant
- Laydown Yard
- Project Boundary
- County Boundary
- Participating Landowner



Kilometers

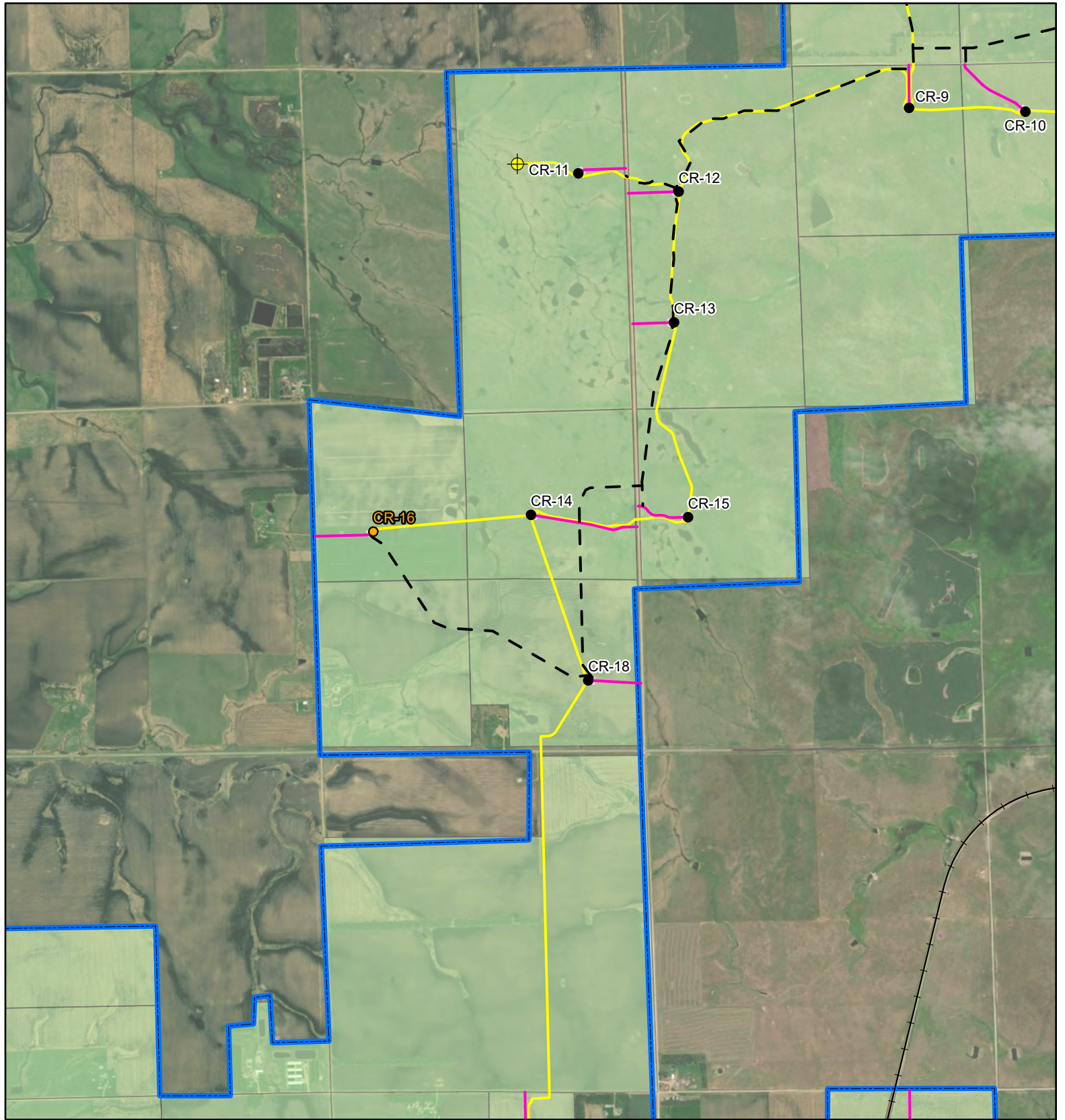
0 0.5 1

Miles

0 0.25 0.5

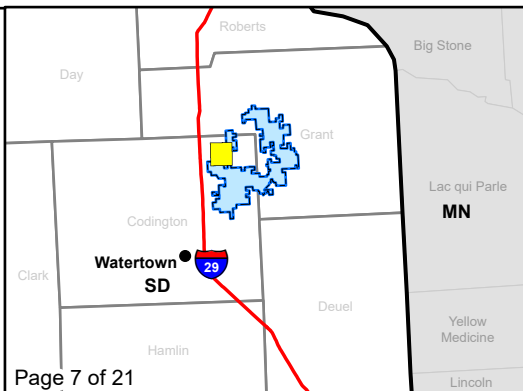
Service Layer Credits: Esri, HERE, Garmin, © OpenStreetMap contributors, and the GIS user community
 Quadrangle: Twin Brooks (1973), Stockholm (1973)
 Township/Range: T120N, R50W, T119N, R50W
 Grant County, South Dakota

SWCA
ENVIRONMENTAL CONSULTANTS



CRI PUC Compliance Crowned Ridge Wind Farm

- Primary Turbine
- Alternate Turbine
- ⊕ MET Tower
- City
- Access Road
- Alternate Access Road
- Collection Line
- Crane Path
- Railroad
- O&M Facility/
Substation
- Batch Plant
- Laydown Yard
- Project Boundary
- County Boundary
- Participating Landowner



Kilometers

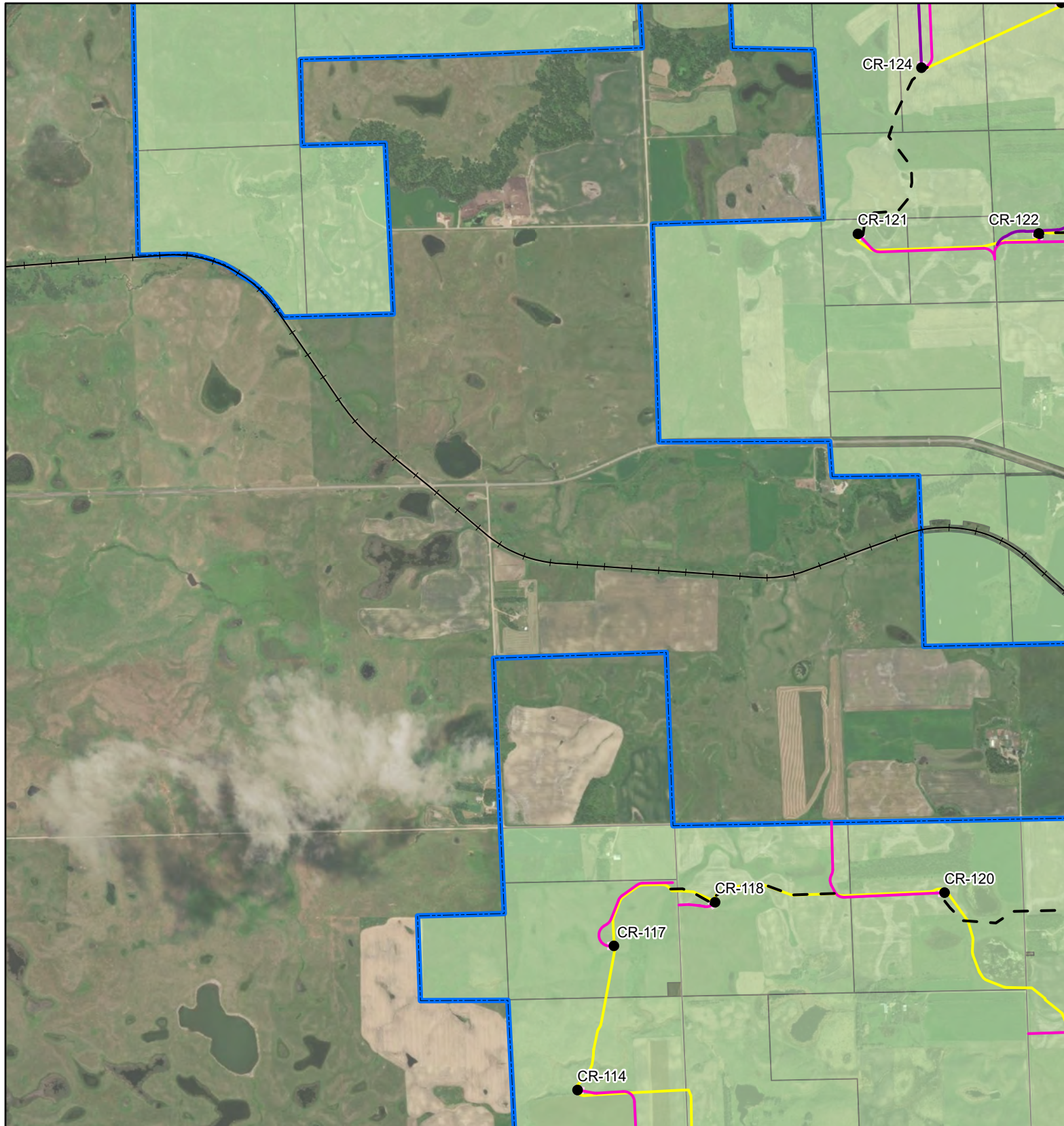
0 0.5 1

Miles

0 0.25 0.5

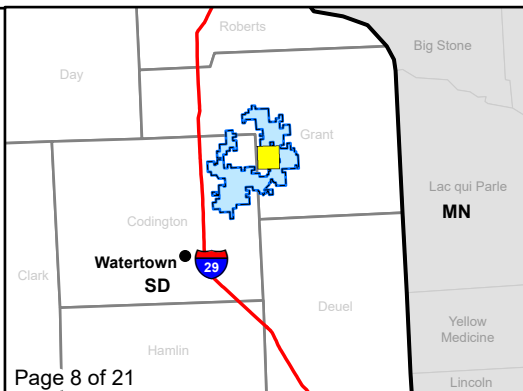
Service Layer Credits: Esri, HERE, Garmin,
© OpenStreetMap contributors, and the GIS user
community
 Quadrangle: Still Lake NE (1970), Antelope Valley (1973),
 Still Lake SE (1970), South Shore (1973)
 Township/Range: T119N, R52W,
 T119N, R51W
 Codington County, South Dakota

SWCA
ENVIRONMENTAL CONSULTANTS



CRI PUC Compliance Crowned Ridge Wind Farm

- Primary Turbine
- Alternate Turbine
- ⊕ MET Tower
- City
- Access Road
- Alternate Access Road
- Collection Line
- Crane Path
- Railroad
- O&M Facility/
Substation
- Batch Plant
- Laydown Yard
- Project Boundary
- County Boundary
- Participating Landowner



Kilometers

0 0.5 1

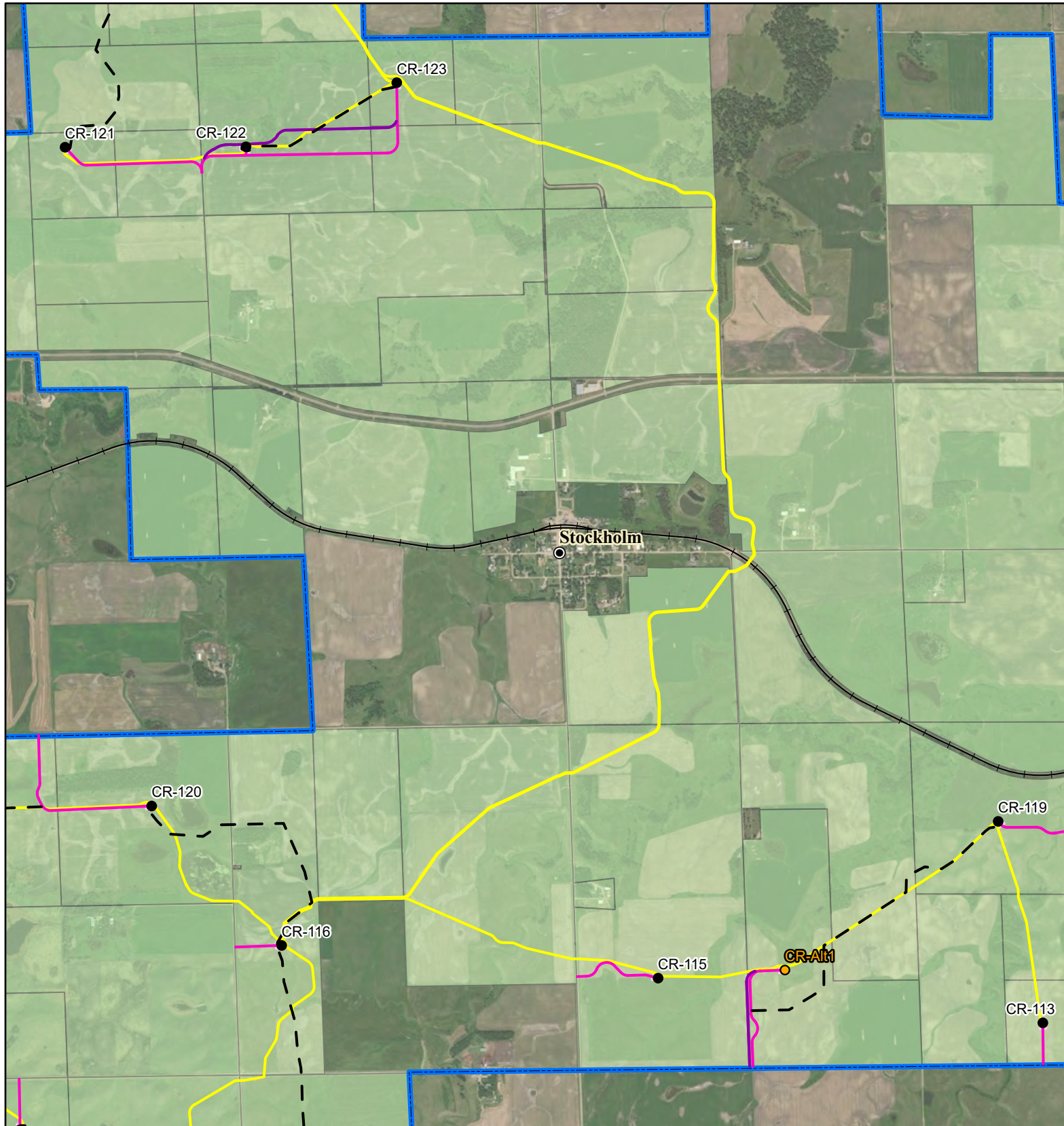
Miles

0 0.25 0.5

Service Layer Credits: Esri, HERE, Garmin,
© OpenStreetMap contributors, and the GIS user
community
Quadrangle: Stockholm (1973), Antelope Valley (1973),
Twin Brooks (1973), South Shore (1973)
Township/Range: T119N, R50W

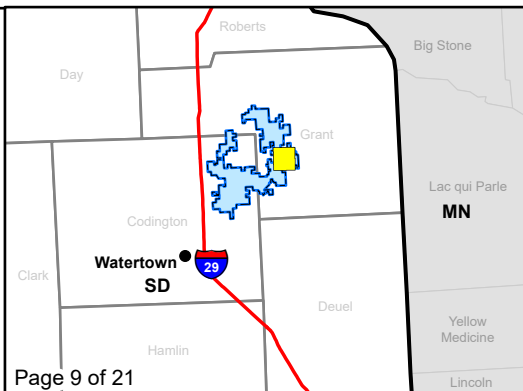
Grant County, South Dakota

Projection:



CRI PUC Compliance
Crowned Ridge Wind Farm

- Primary Turbine
- Alternate Turbine
- ⊕ MET Tower
- City
- Access Road
- Alternate Access Road
- Collection Line
- Crane Path
- Railroad
- O&M Facility/ Substation
- Batch Plant
- Laydown Yard
- Project Boundary
- County Boundary
- Participating Landowner



Kilometers

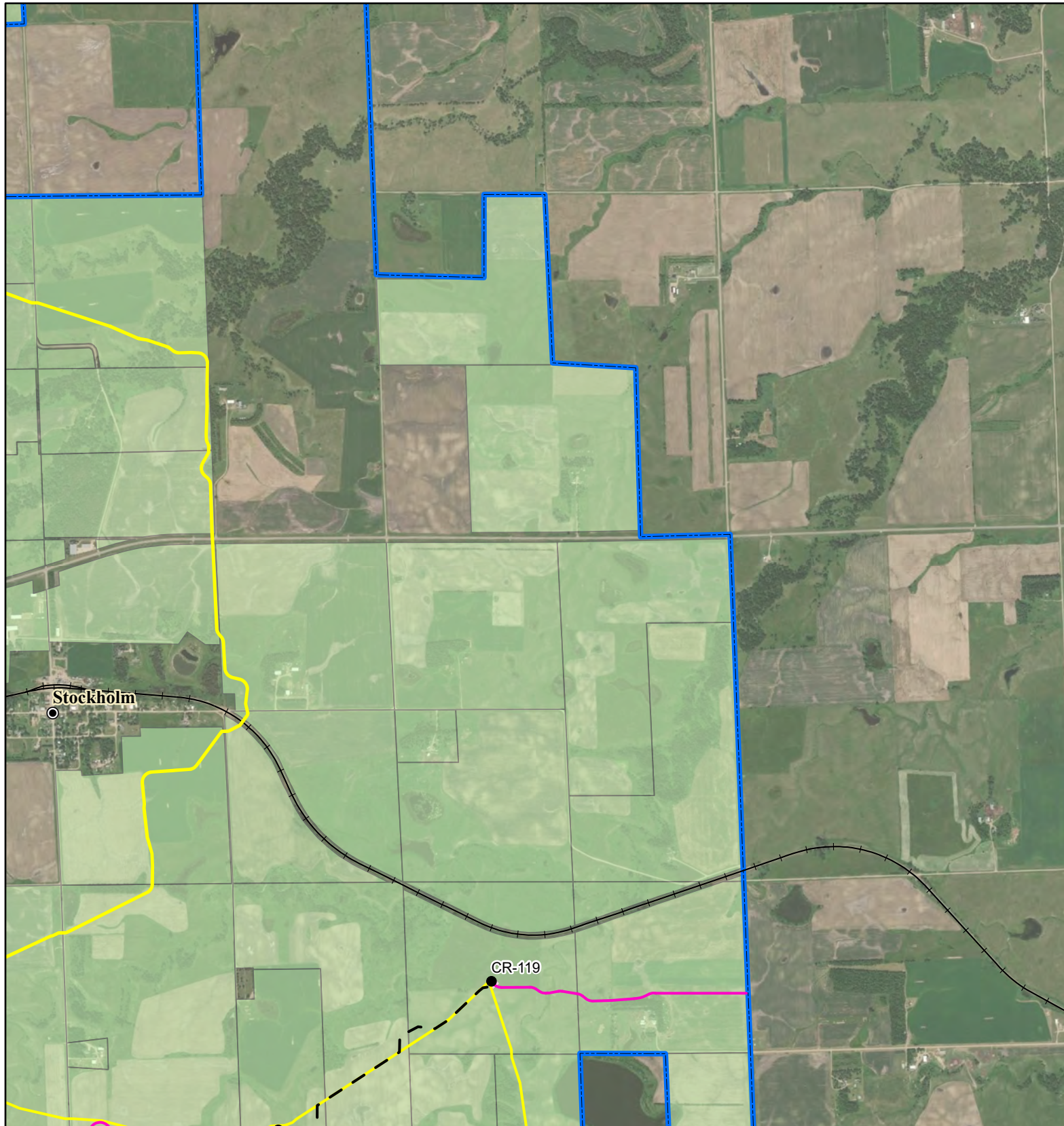
0 0.5 1

Miles

0 0.25 0.5

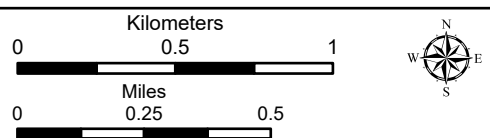
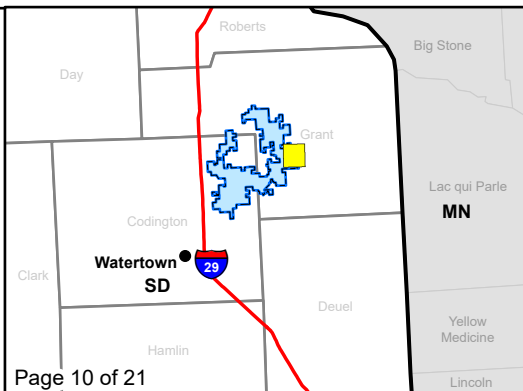
Service Layer Credits: Esri, HERE, Garmin, © OpenStreetMap contributors, and the GIS user community
 Quadrangle: Stockholm (1973)
 Township/Range: T119N, R50W
 Grant County, South Dakota

SWCA
ENVIRONMENTAL CONSULTANTS

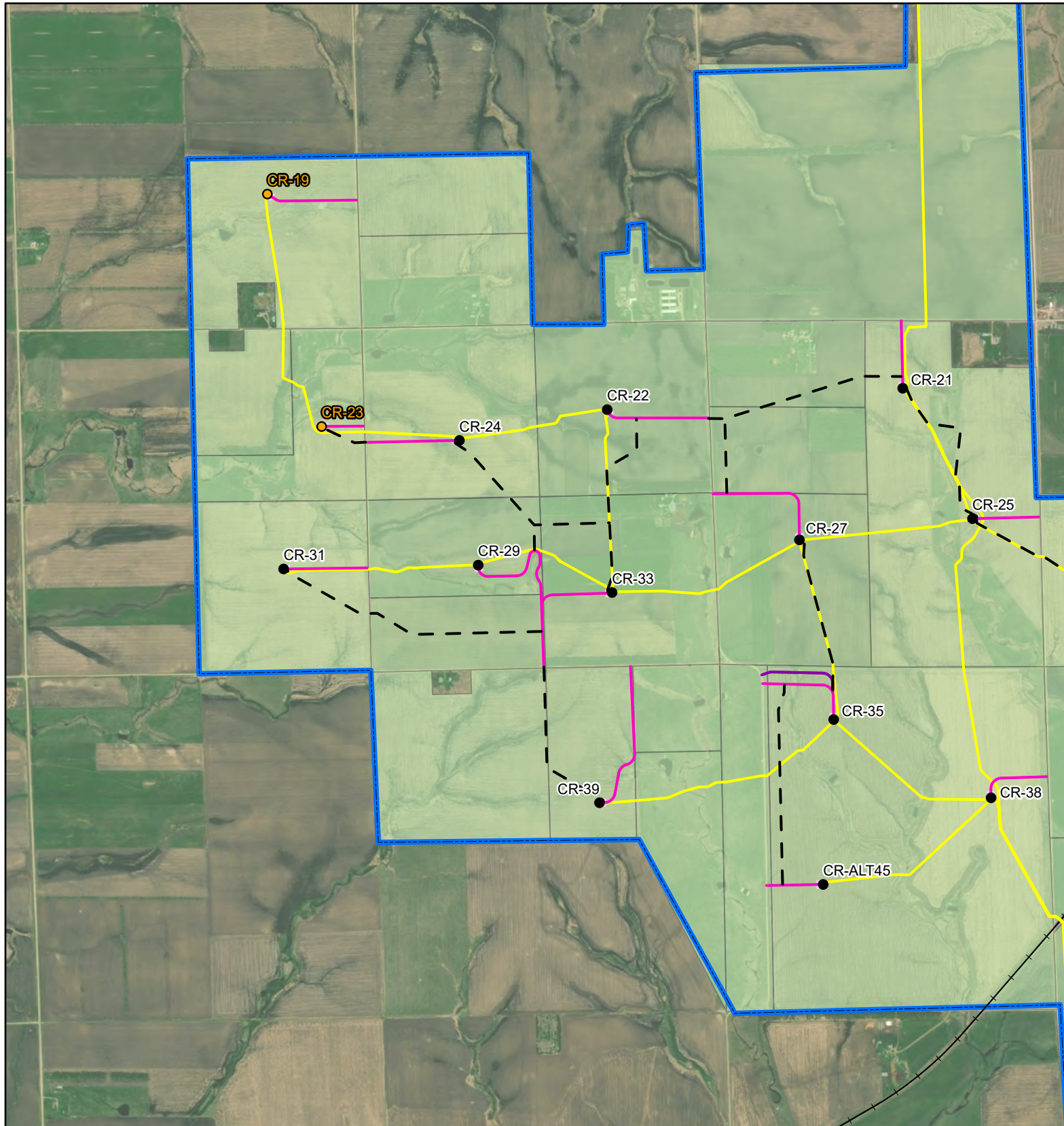


CRI PUC Compliance Crowned Ridge Wind Farm

- Primary Turbine
- Alternate Turbine
- ⊕ MET Tower
- City
- Access Road
- Alternate Access Road
- Collection Line
- Crane Path
- Railroad
- O&M Facility/ Substation
- Batch Plant
- Laydown Yard
- Project Boundary
- County Boundary
- Participating Landowner

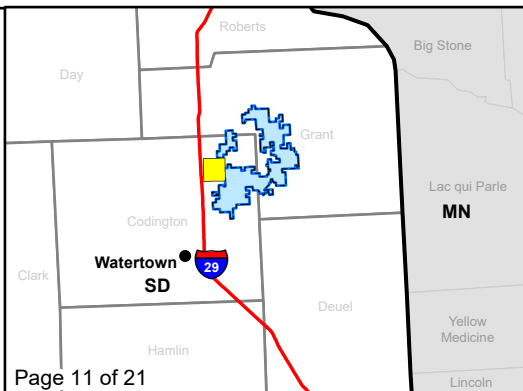


Service Layer Credits: Esri, HERE, Garmin, © OpenStreetMap contributors, and the GIS user community
 Quadrangle: Twin Brooks (1973), Stockholm (1973)
 Township/Range: T119N, R50W, T119N, R49W
 Grant County, South Dakota



CRI PUC Compliance
Crowned Ridge Wind Farm

- Primary Turbine
- Alternate Turbine
- ⊕ MET Tower
- City
- Access Road
- Alternate Access Road
- Collection Line
- Crane Path
- Railroad
- O&M Facility/ Substation
- Batch Plant
- Laydown Yard
- Project Boundary
- County Boundary
- Participating Landowner



Kilometers

0 0.5 1

Miles

0 0.25 0.5

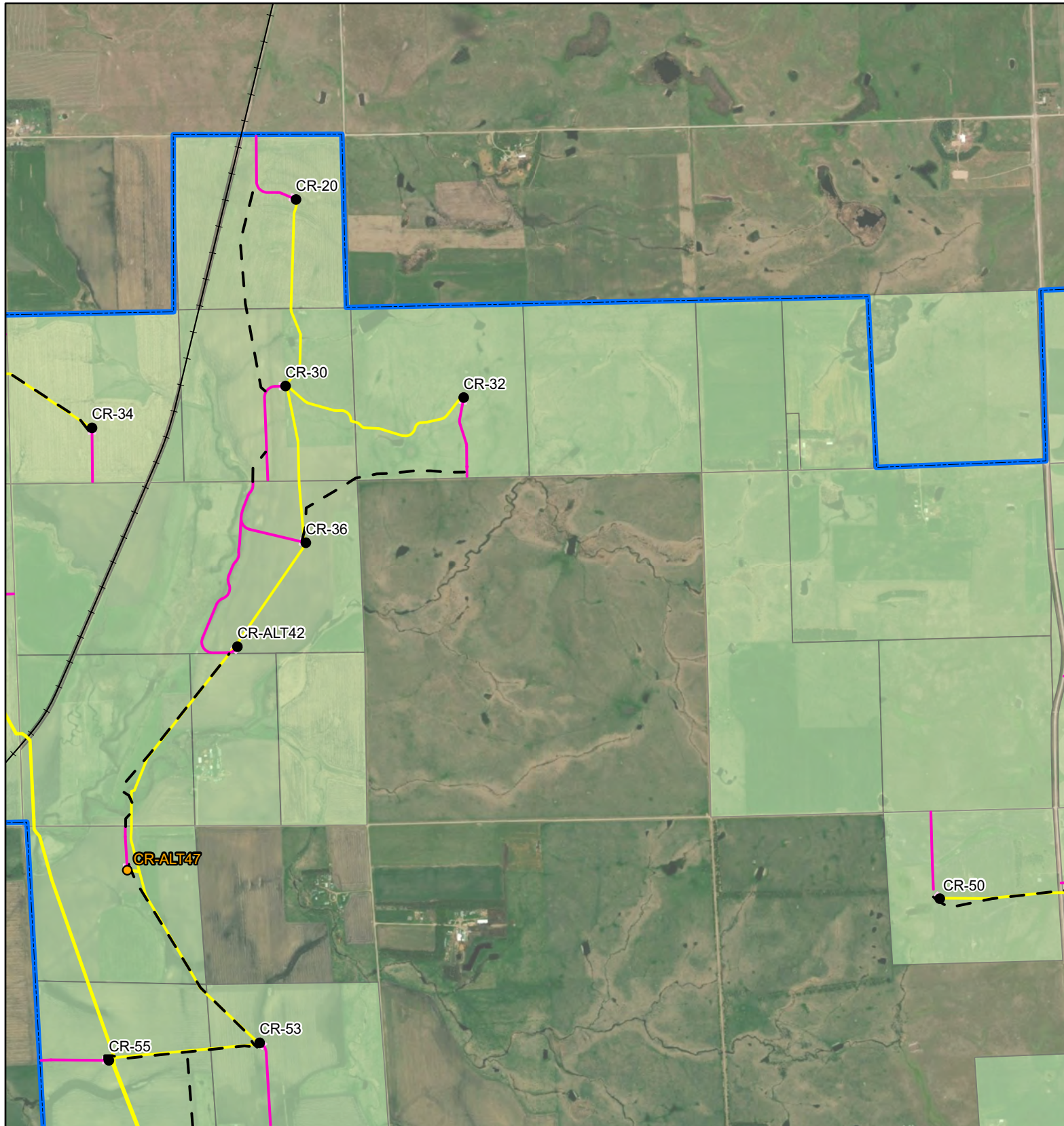
Service Layer Credits: Esri, HERE, Garmin, © OpenStreetMap contributors, and the GIS user community

Quadrangle: Still Lake SE (1970), South Shore (1973)

Township/Range: T119N, R52W, T119N, R51W, T118N, R52W, T118N, R51W

Codington County, South Dakota

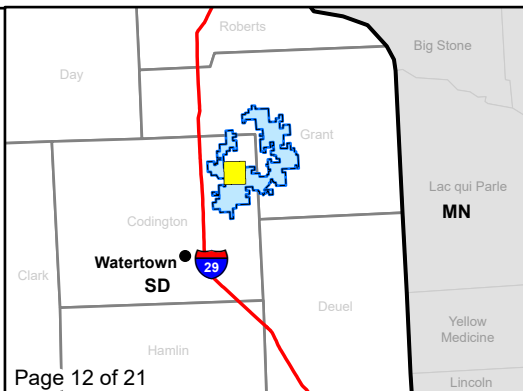
Projection:



CRI PUC Compliance

Crowned Ridge Wind Farm

- Primary Turbine
- Alternate Turbine
- ⊕ MET Tower
- City
- Access Road
- Alternate Access Road
- Collection Line
- Crane Path
- Railroad
- O&M Facility/ Substation
- Batch Plant
- Laydown Yard
- Project Boundary
- County Boundary
- Participating Landowner



Kilometers

0 0.5 1

Miles

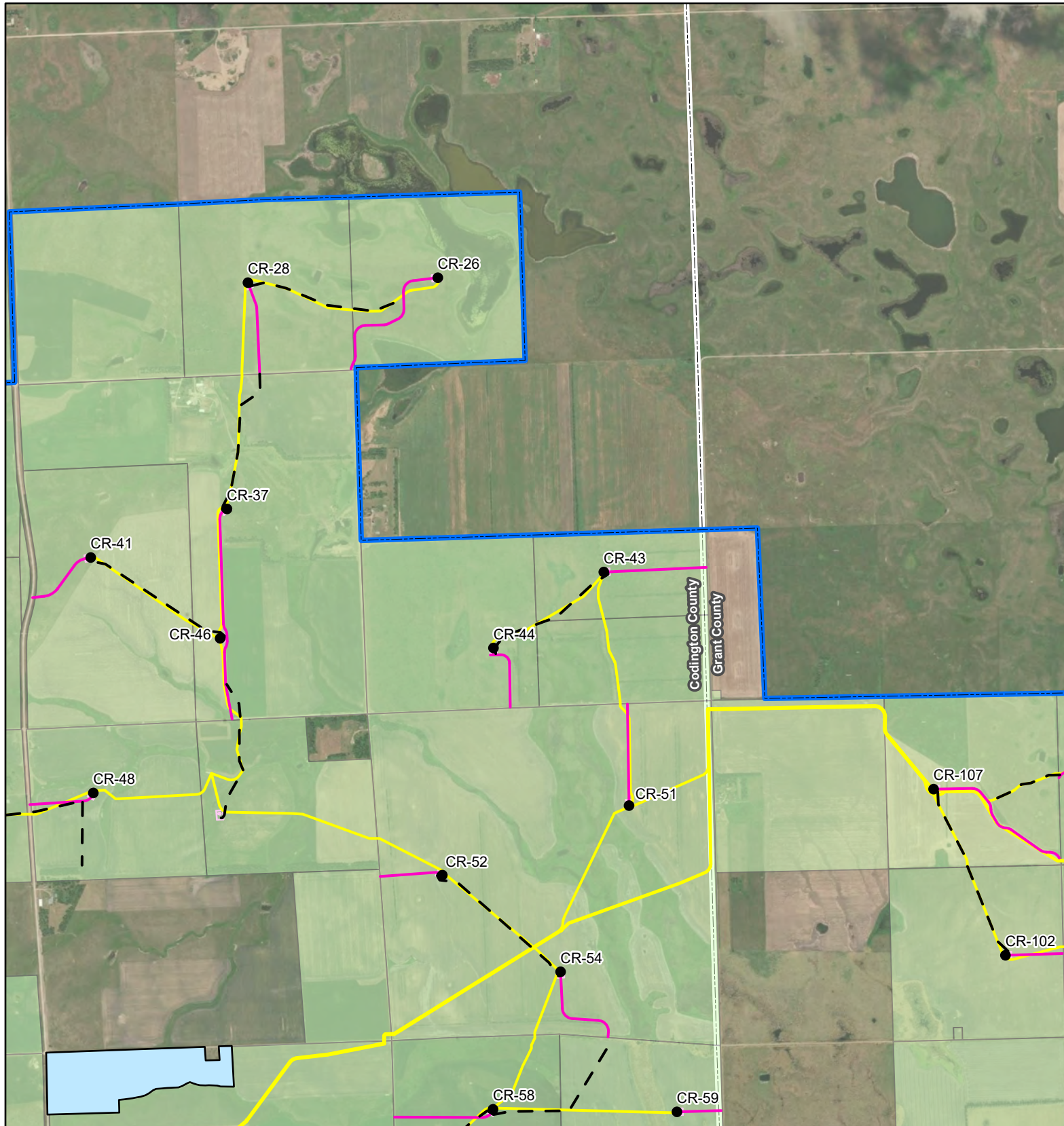
0 0.25 0.5

Service Layer Credits: Esri, HERE, Garmin, © OpenStreetMap contributors, and the GIS user community
 Quadrangle: South Shore (1973)

Township/Range: T119N, R51W, T118N, R51W
 Codrington County, South Dakota

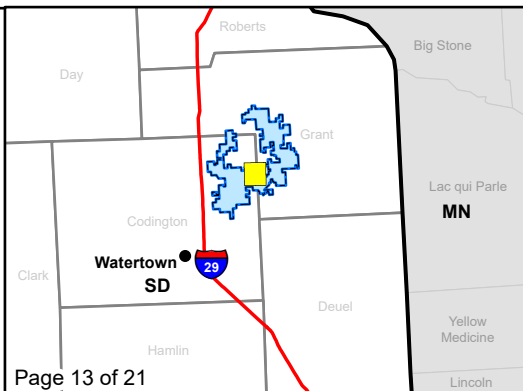
Projection:





CRI PUC Compliance
Crowned Ridge Wind Farm

- Primary Turbine
- Alternate Turbine
- ⊕ MET Tower
- City
- Access Road
- Alternate Access Road
- Collection Line
- Crane Path
- ✚ Railroad
- O&M Facility/ Substation
- Batch Plant
- Laydown Yard
- Project Boundary
- County Boundary
- Participating Landowner

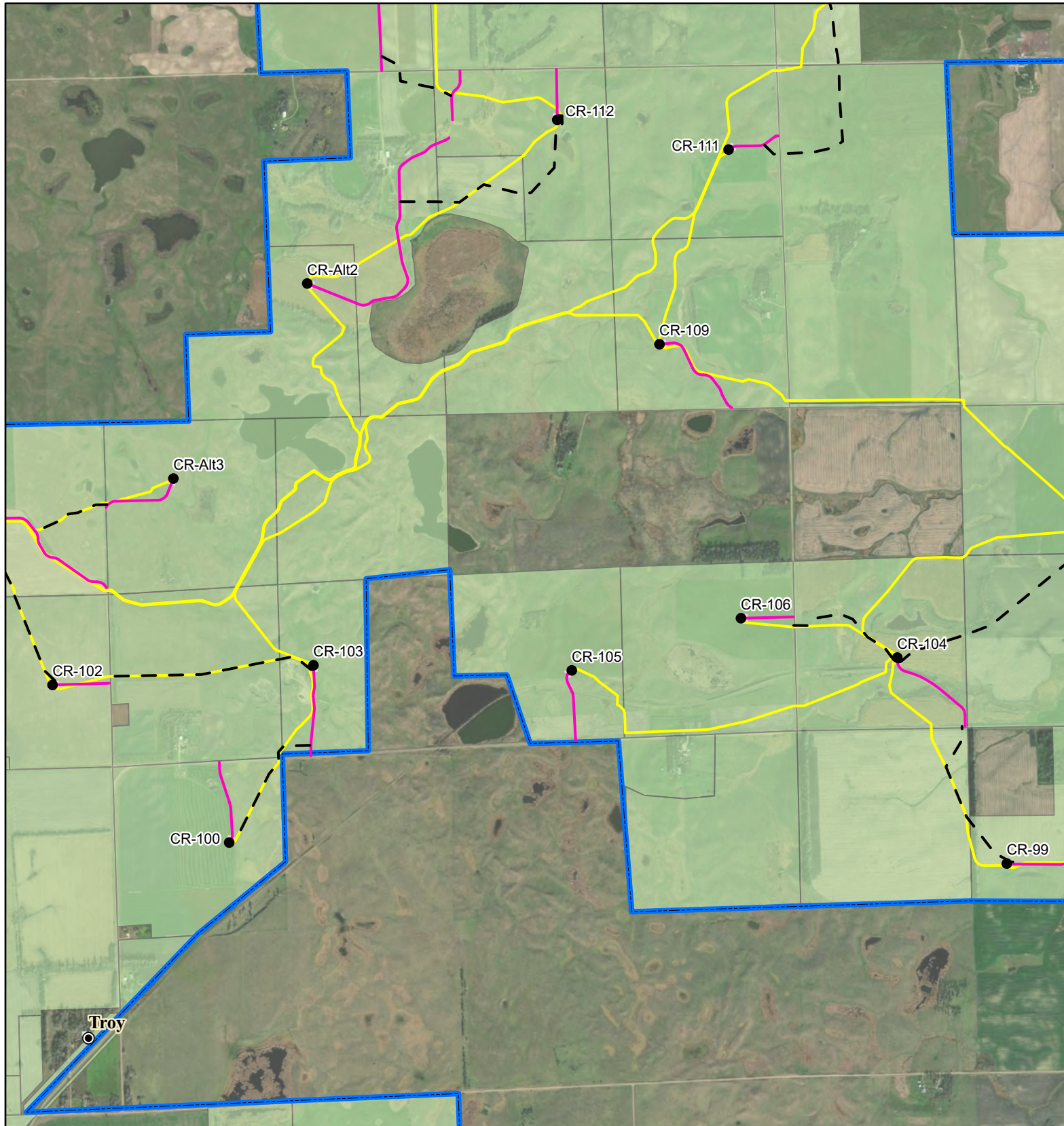


Kilometers
 0 0.5 1
 Miles
 0 0.25 0.5

Service Layer Credits: Esri, HERE, Garmin,
 © OpenStreetMap contributors, and the GIS user
 community
 Quadrangle: South Shore (1973),
 Stockholm (1973)
 Township/Range: T119N, R51W, T119N, R50W,
 T118N, R51W, T118N, R50W
 Codrington and Grant Counties, South Dakota

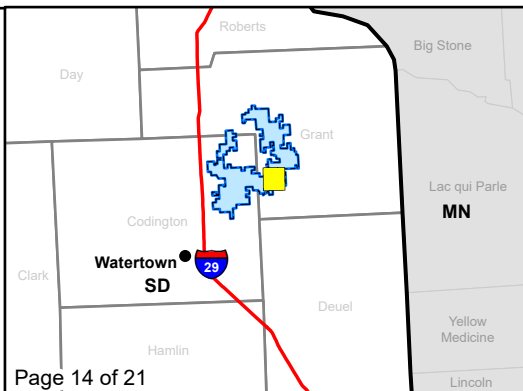
Projection:





CRI PUC Compliance Crowned Ridge Wind Farm

- Primary Turbine
- Alternate Turbine
- ⊕ MET Tower
- ⊙ City
- Access Road
- Alternate Access Road
- Collection Line
- Crane Path
- Railroad
- O&M Facility/ Substation
- Batch Plant
- Laydown Yard
- Project Boundary
- ⋯ County Boundary
- Participating Landowner



Kilometers

0 0.5 1

Miles

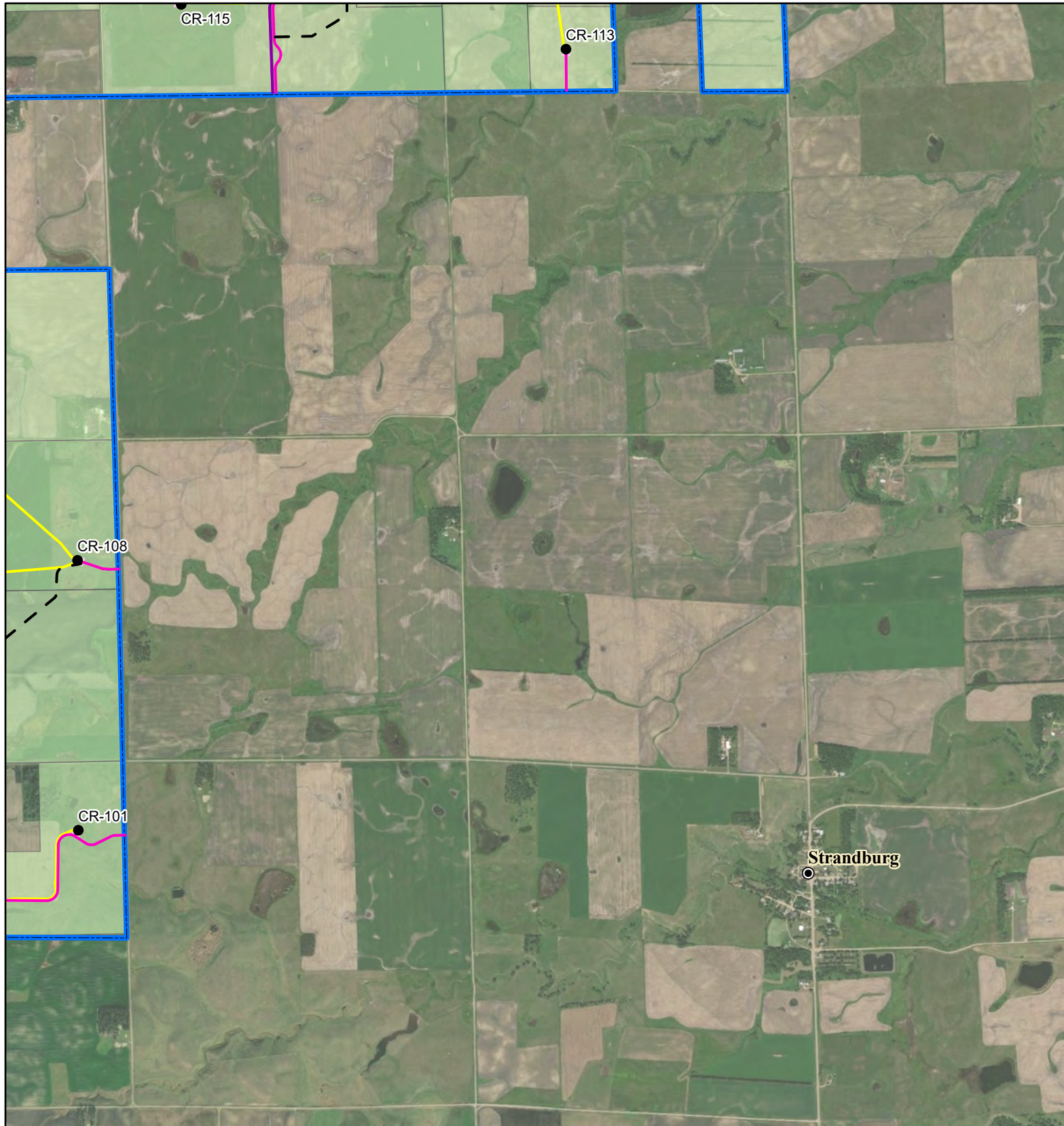
0 0.25 0.5

Service Layer Credits: Esri, HERE, Garmin, © OpenStreetMap contributors, and the GIS user community
 Quadrangle: Stockholm (1973)

Township/Range: T119N, R50W,
 T118N, R50W
 Grant County, South Dakota

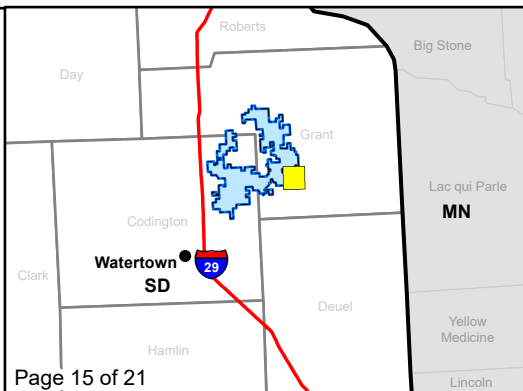
Projection:





CRI PUC Compliance
Crowned Ridge Wind Farm

- Primary Turbine
- Alternate Turbine
- ⊕ MET Tower
- ⊙ City
- Access Road
- Alternate Access Road
- Collection Line
- Crane Path
- ✦ Railroad
- O&M Facility/ Substation
- Batch Plant
- Laydown Yard
- Project Boundary
- ⊡ County Boundary
- Participating Landowner



Kilometers

0 0.5 1

Miles

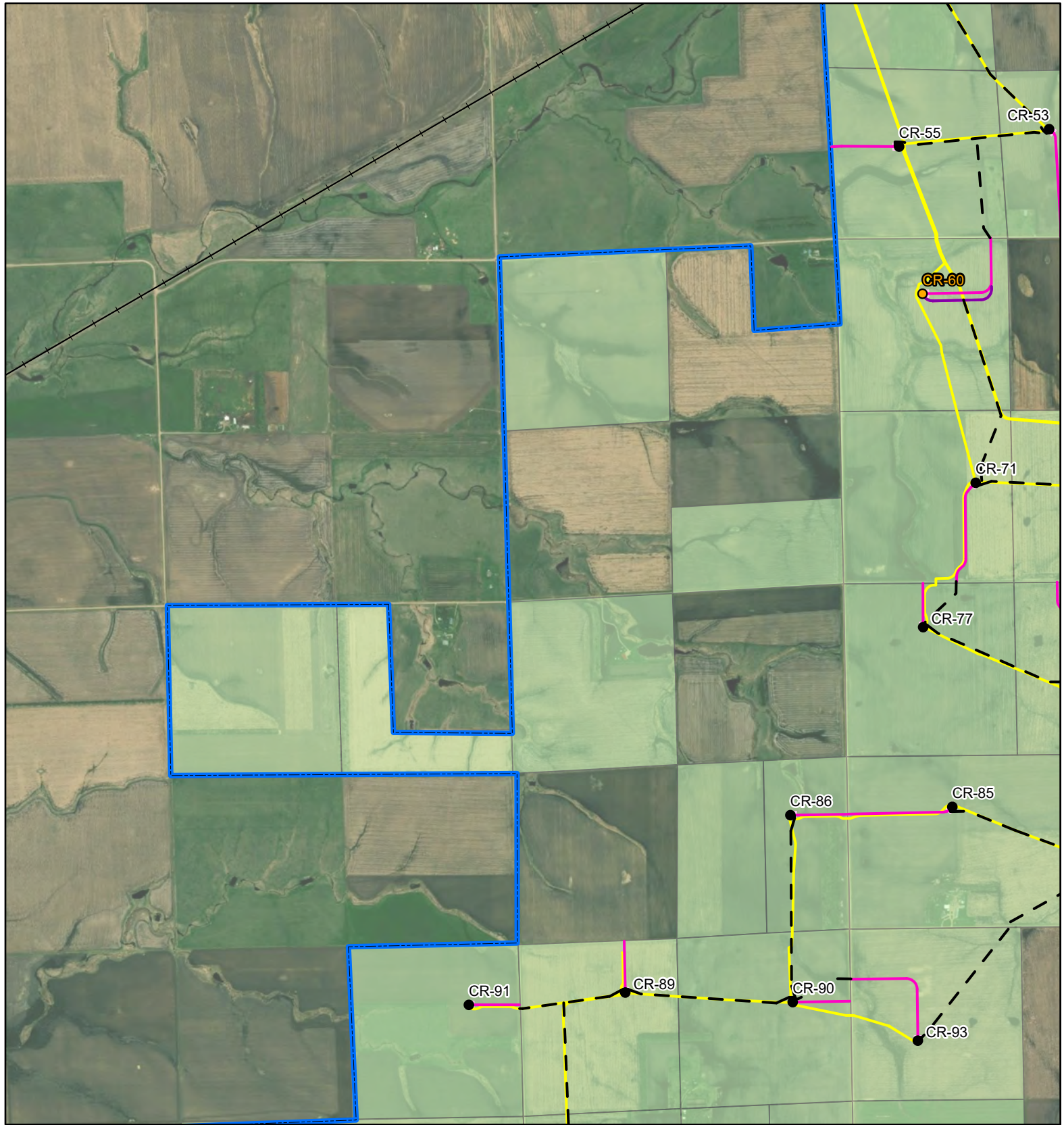
0 0.25 0.5

Service Layer Credits: Esri, HERE, Garmin, © OpenStreetMap contributors, and the GIS user community
 Quadrangle: Stockholm (1973)

Township/Range: T119N, R50W,
 T118N, R50W
 Grant County, South Dakota

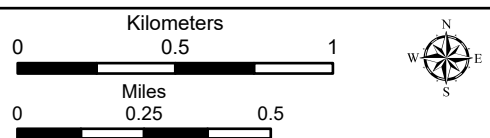
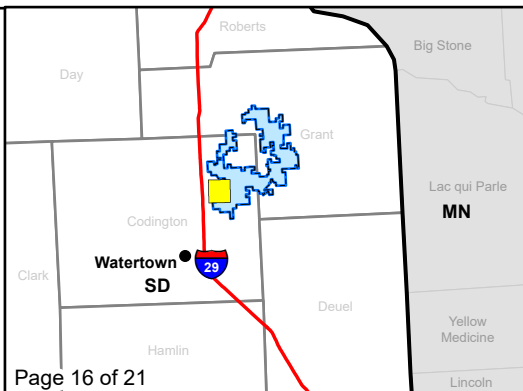
Projection:





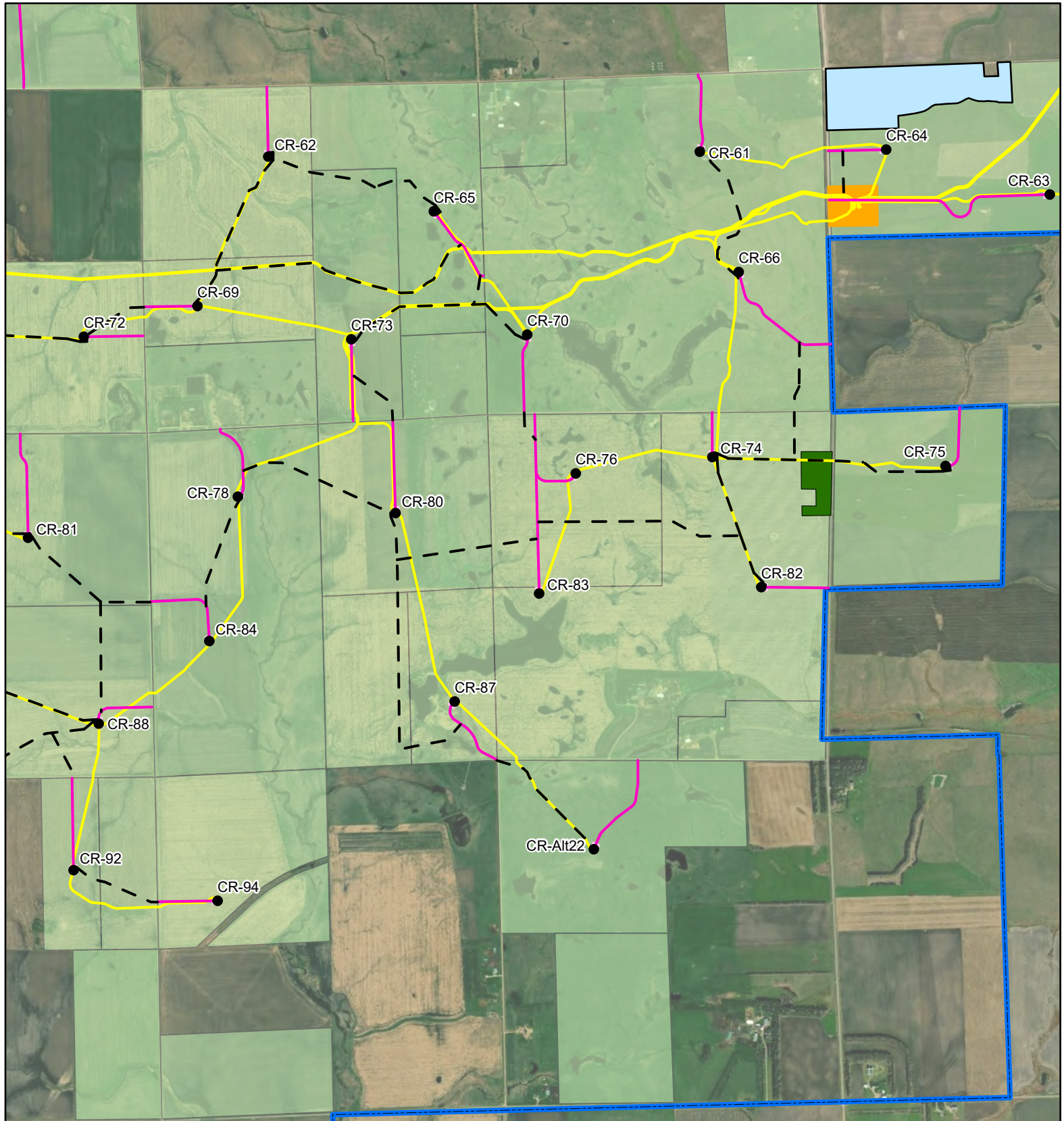
CRI PUC Compliance Crowned Ridge Wind Farm

- Primary Turbine
- Alternate Turbine
- ⊕ MET Tower
- City
- Access Road
- Alternate Access Road
- Collection Line
- Crane Path
- Railroad
- O&M Facility/ Substation
- Batch Plant
- Laydown Yard
- Project Boundary
- County Boundary
- Participating Landowner



Service Layer Credits: Esri, HERE, Garmin, © OpenStreetMap contributors, and the GIS user community
 Quadrangle: Still Lake SE (1970), South Shore (1973)
 Township/Range: T118N, R52W, T118N, R51W
 Codrington County, South Dakota

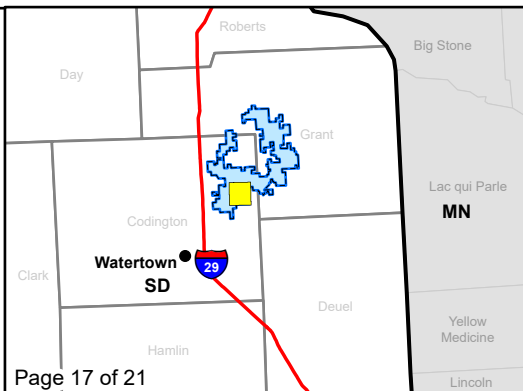




CRI PUC Compliance

Crowned Ridge Wind Farm

- Primary Turbine
- Alternate Turbine
- ⊕ MET Tower
- City
- Access Road
- Alternate Access Road
- Collection Line
- Crane Path
- Railroad
- O&M Facility/ Substation
- Batch Plant
- Laydown Yard
- Project Boundary
- County Boundary
- Participating Landowner



Kilometers

0 0.5 1

Miles

0 0.25 0.5

Service Layer Credits: Esri, HERE, Garmin, © OpenStreetMap contributors, and the GIS user community

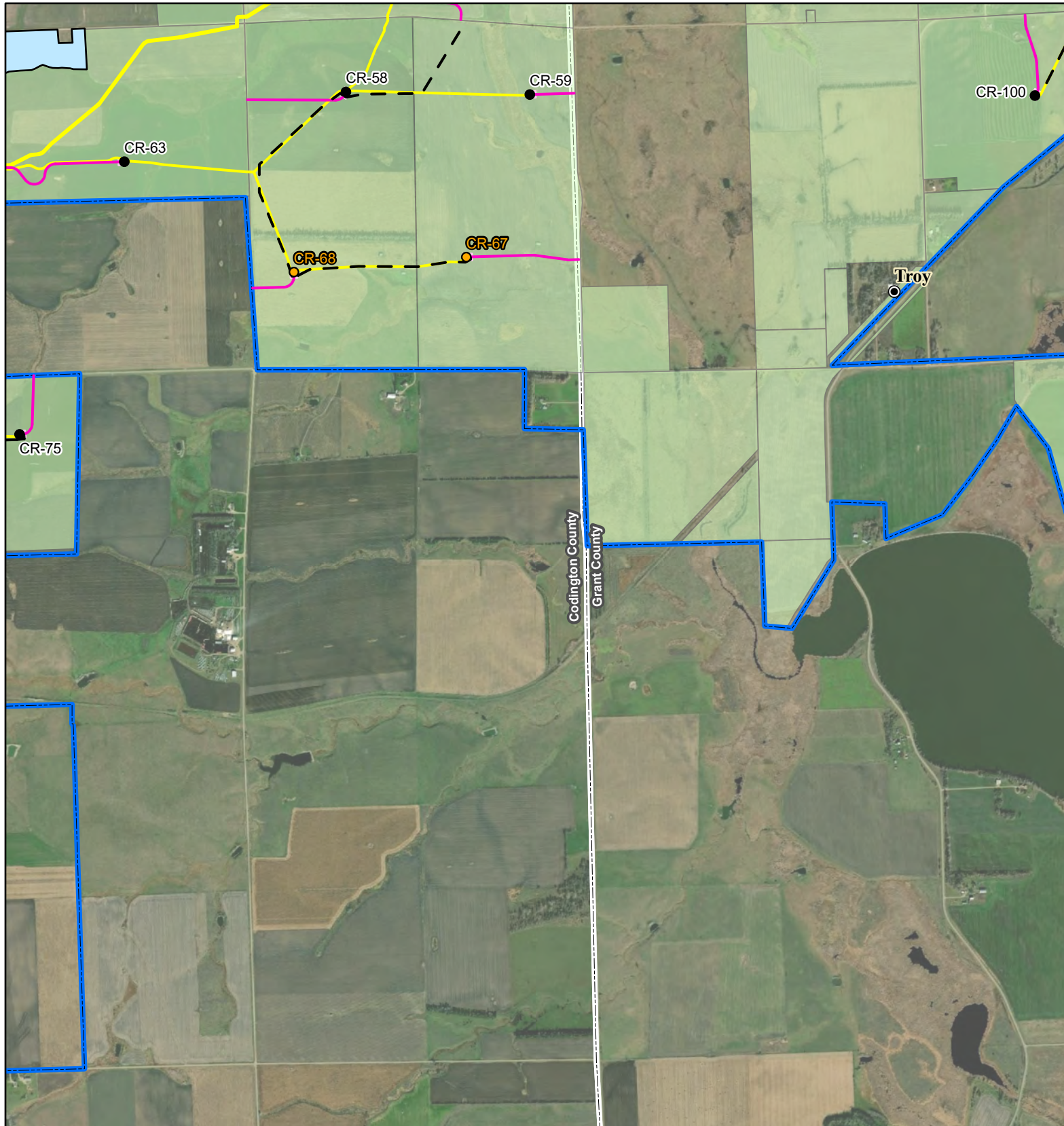
Quadrangle: South Shore (1973)

Township/Range: T118N, R51W

Codington County, South Dakota

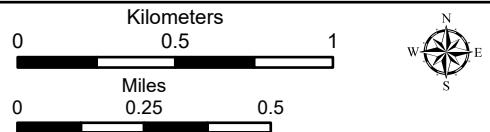
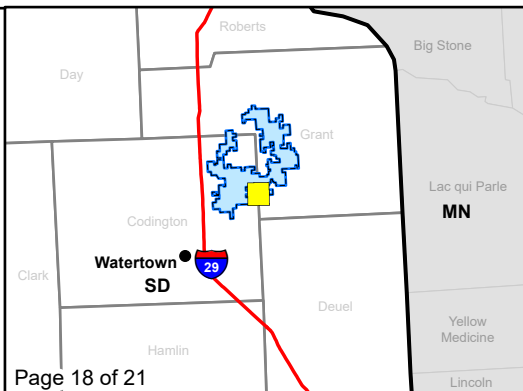
Projection:





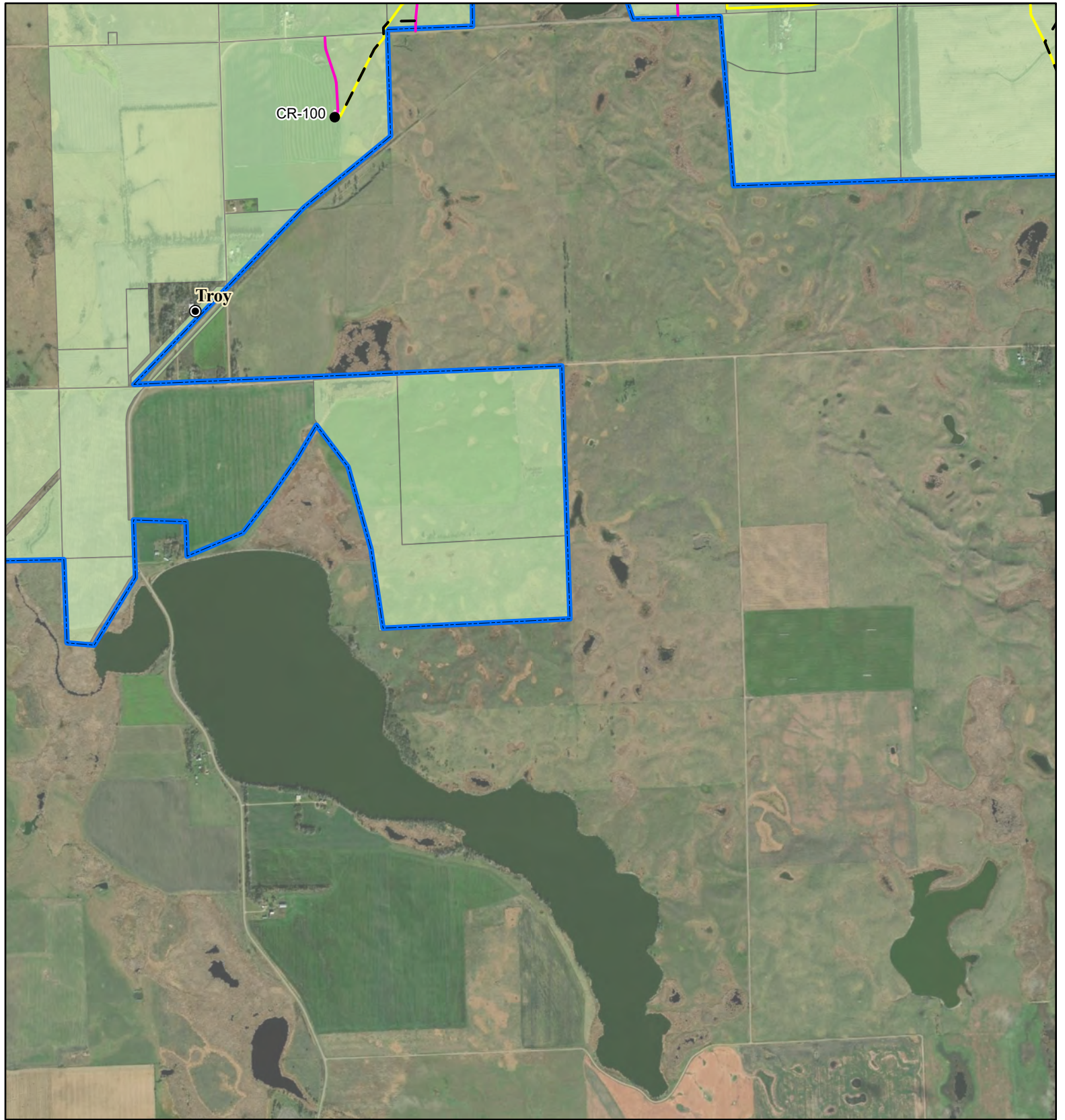
CRI PUC Compliance Crowned Ridge Wind Farm

- Primary Turbine
- Alternate Turbine
- ⊕ MET Tower
- City
- Access Road
- Alternate Access Road
- Collection Line
- Crane Path
- Railroad
- O&M Facility/
Substation
- Batch Plant
- Laydown Yard
- Project Boundary
- County Boundary
- Participating Landowner



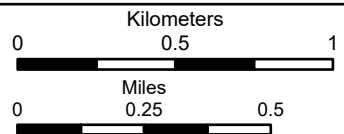
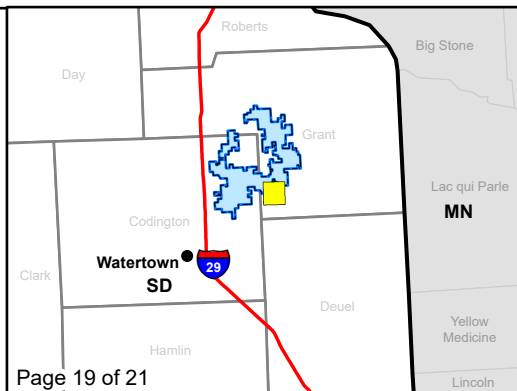
Service Layer Credits: Esri, HERE, Garmin,
© OpenStreetMap contributors, and the GIS user
community
Quadrangle: South Shore (1973),
Stockholm (1973)
Township/Range: T118N, R51W,
T118N, R50W
Codrington and Grant Counties, South Dakota





CRI PUC Compliance
Crowned Ridge Wind Farm

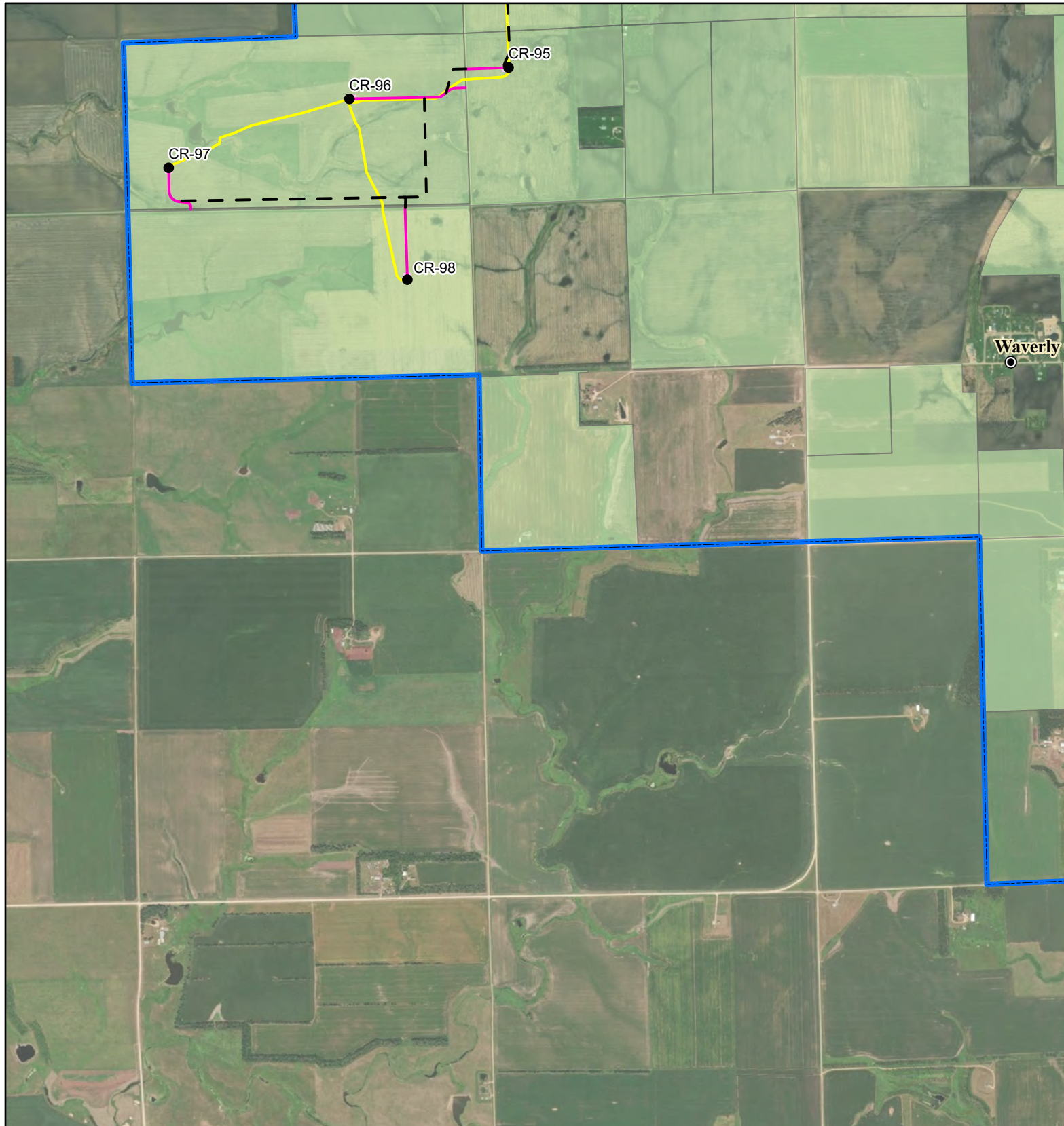
- Primary Turbine
- Alternate Turbine
- ⊕ MET Tower
- ⊙ City
- Access Road
- Alternate Access Road
- Collection Line
- Crane Path
- Railroad
- O&M Facility/ Substation
- Batch Plant
- Laydown Yard
- Project Boundary
- County Boundary
- Participating Landowner



Service Layer Credits: Esri, HERE, Garmin,
© OpenStreetMap contributors, and the GIS user
community
Quadrangle: South Shore (1973),
Stockholm (1973)
Township/Range: T118N, R50W

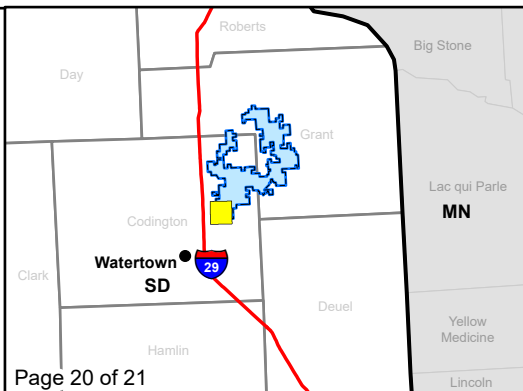
Grant County, South Dakota





CRI PUC Compliance
Crowned Ridge Wind Farm

- Primary Turbine
- Alternate Turbine
- ⊕ MET Tower
- City
- Access Road
- Alternate Access Road
- Collection Line
- Crane Path
- Railroad
- O&M Facility/ Substation
- Batch Plant
- Laydown Yard
- Project Boundary
- County Boundary
- Participating Landowner



Kilometers

0 0.5 1

Miles

0 0.25 0.5

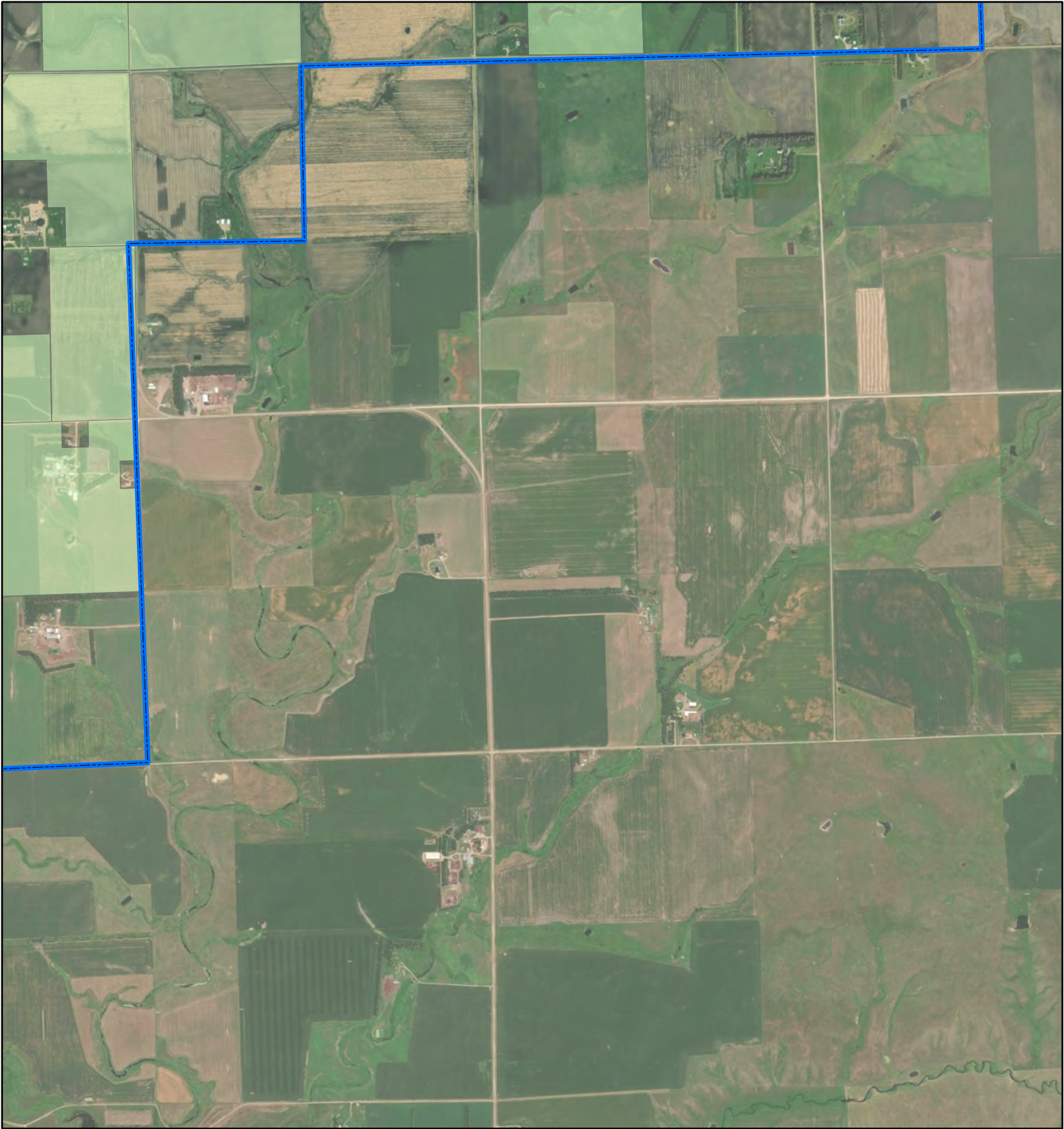
Service Layer Credits: Esri, HERE, Garmin, © OpenStreetMap contributors, and the GIS user community

Quadrangle: Still Lake SE (1970), Watertown East (1969), South Shore (1973), Kranzburg (1970)

Township/Range: T118N, R52W, T118N, R51W, T117N, R52W, T117N, R51W

Codington County, South Dakota

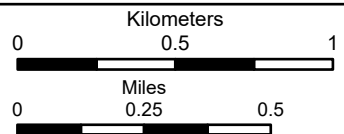
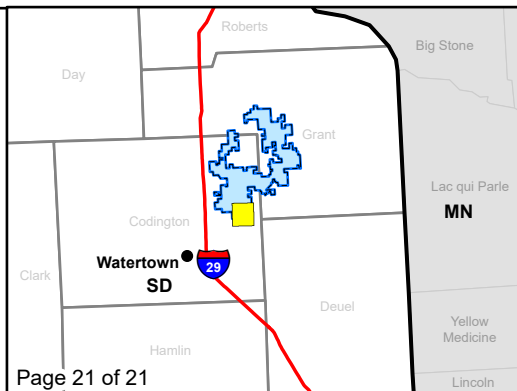
SWCA
ENVIRONMENTAL CONSULTANTS



CRI PUC Compliance

Crowned Ridge Wind Farm

- Primary Turbine
- Alternate Turbine
- ⊕ MET Tower
- ⊙ City
- Access Road
- Alternate Access Road
- Collection Line
- Crane Path
- Railroad
- O&M Facility/ Substation
- Batch Plant
- Laydown Yard
- Project Boundary
- County Boundary
- Participating Landowner



Service Layer Credits: Esri, HERE, Garmin, © OpenStreetMap contributors, and the GIS user community
 Quadrangle: South Shore (1973), Kranzburg (1970)
 Township/Range: T118N, R51W, T117N, R51W
 Codrington County, South Dakota

