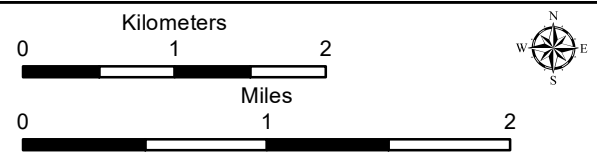
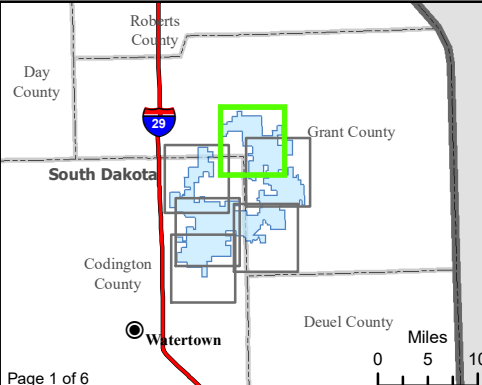


Figure 12. Water Resources
Crowned Ridge Wind Farm

- City
- U.S. Highway
- State Highway
- South Dakota Beneficial Use Stream
- South Dakota Beneficial Use Lake
- Watershed Boundary (HUC12)
- Project Boundary
- County Boundary
- Township/Range Boundary
- FEMA Flood Zone**
- A
- NWI Wetland**
- Freshwater Emergent Wetland
- Freshwater Forested/Shrub Wetland
- Lake, Pond, or Riverine Wetland



Base Map: USGS 7.5' Topographic Map
 Source: Esri ArcGIS Online service
 Quadrangle: Antelope Valley (1973),
 Twin Brooks (1973), Stockholm (1973)
 Township/Range: T120N, R51W &
 T120N, R50W & T119N, R50W
 Grant County, South Dakota

Projection: NAD 1983 UTM Zone 14N



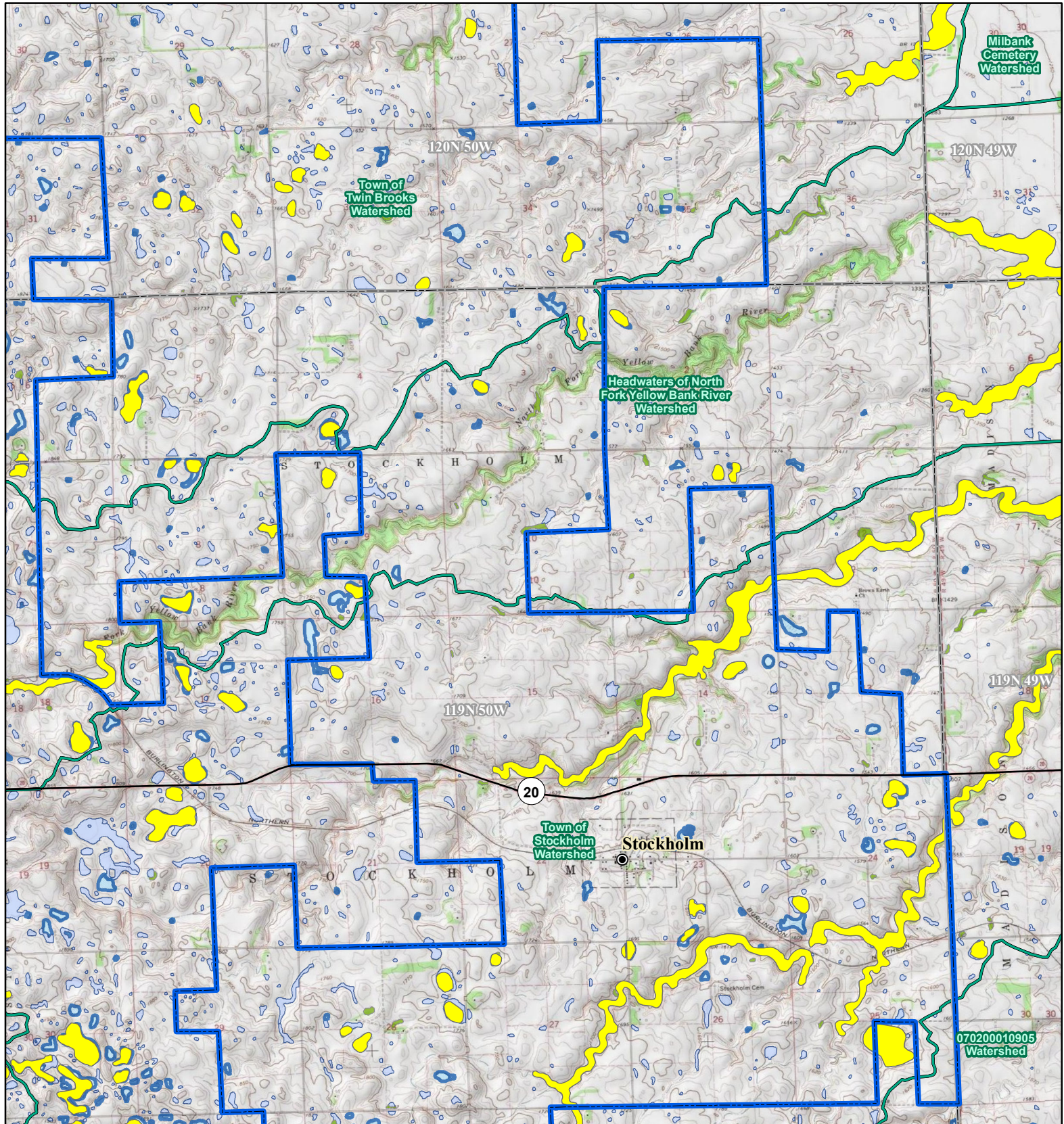
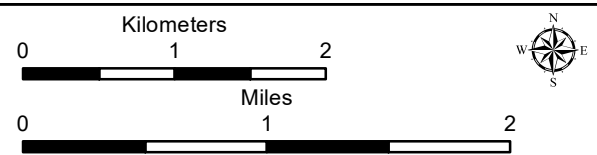
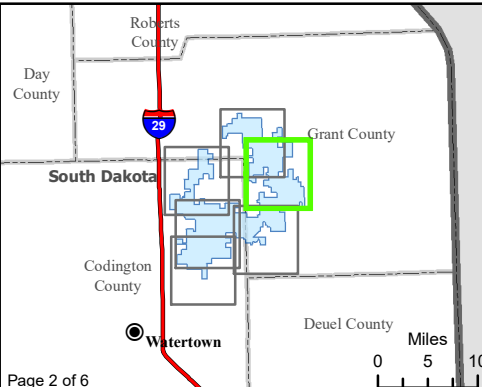


Figure 12. Water Resources
Crowned Ridge Wind Farm

- City
- U.S. Highway
- State Highway
- South Dakota Beneficial Use Stream
- South Dakota Beneficial Use Lake
- Watershed Boundary (HUC12)
- Project Boundary
- County Boundary
- Township/Range Boundary
- FEMA Flood Zone**
- A
- NWI Wetland**
- Freshwater Emergent Wetland
- Freshwater Forested/Shrub Wetland
- Lake, Pond, or Riverine Wetland



Base Map: USGS 7.5' Topographic Map
 Source: Esri ArcGIS Online service
 Quadrangle: Twin Brooks (1973),
 Stockholm (1973)
 Township/Range: T120N, R50W &
 T119N, R50W
 Grant County, South Dakota

Projection: NAD 1983 UTM Zone 14N



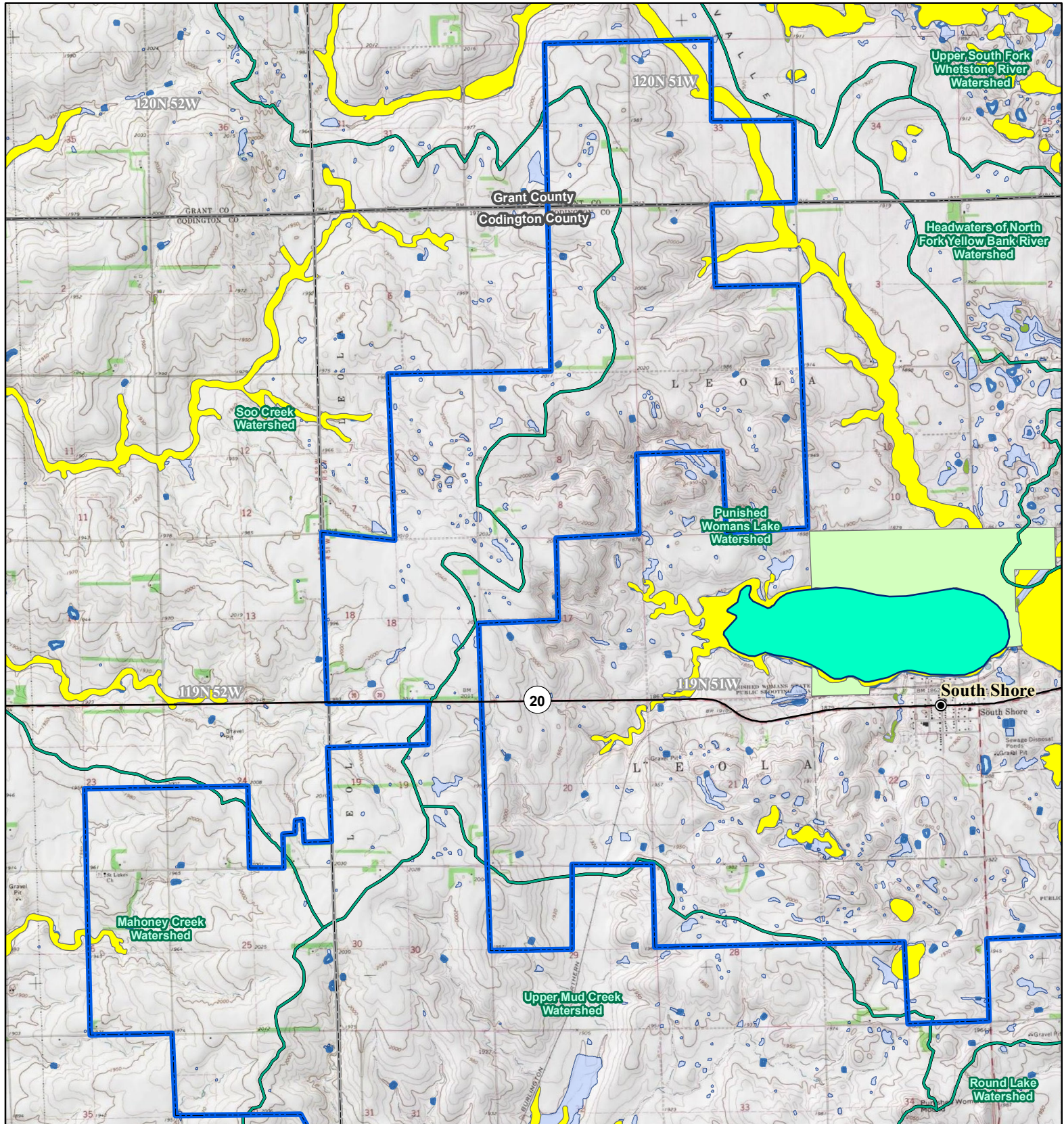
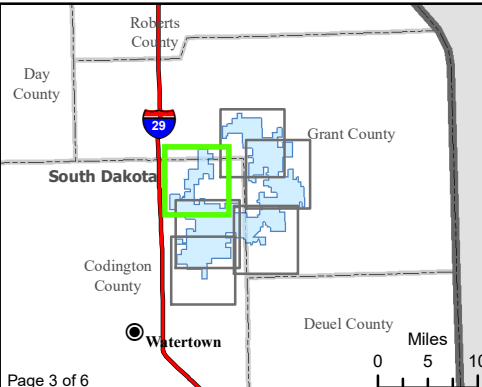


Figure 12. Water Resources
Crowned Ridge Wind Farm

- City
- U.S. Highway
- State Highway
- South Dakota Beneficial Use Stream
- South Dakota Beneficial Use Lake
- Watershed Boundary (HUC12)
- Project Boundary
- County Boundary
- Township/Range Boundary
- FEMA Flood Zone**
- A
- D
- NWI Wetland**
- Freshwater Emergent Wetland
- Freshwater Forested/Shrub Wetland
- Lake, Pond, or Riverine Wetland



Kilometers
0 1 2

Miles
0 1 2

Base Map: USGS 7.5' Topographic Map
 Source: Esri ArcGIS Online service
 Quadrangle: Antelope Valley (1973), Still Lake SE (1970), South Shore (1973)
 Township/Range: T120N, R51W & T119N, R52W & T119N, R51W
 Codington and Grant Counties, South Dakota

Projection: NAD 1983 UTM Zone 14N



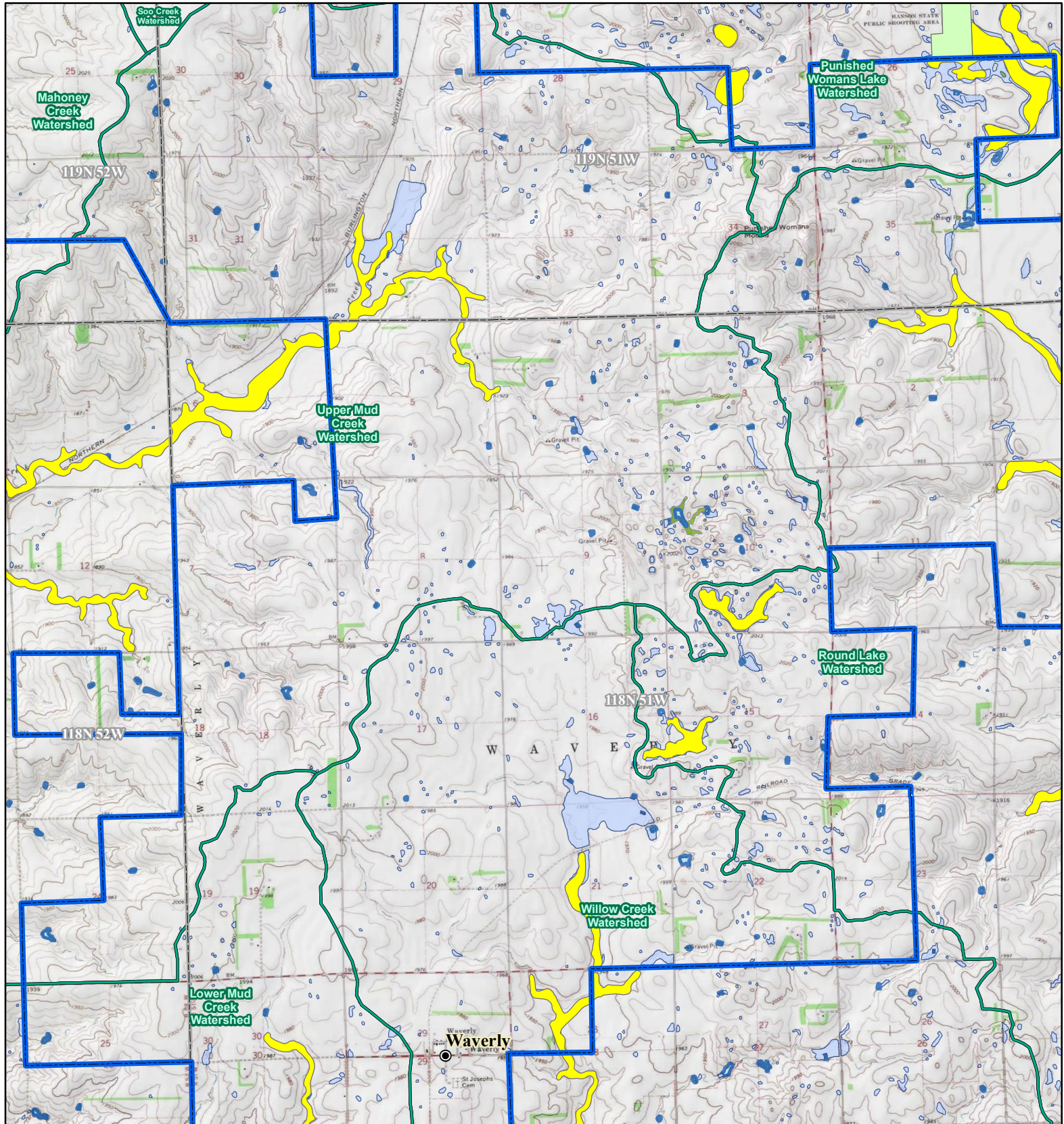
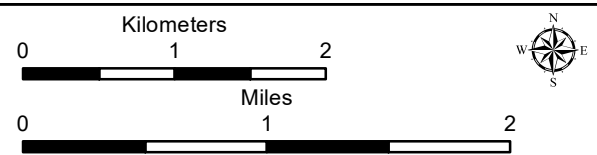
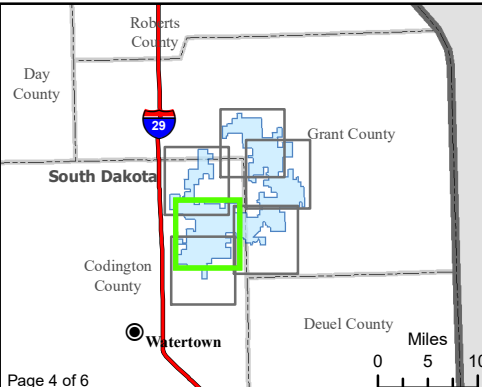


Figure 12. Water Resources
Crowned Ridge Wind Farm

- City
- U.S. Highway
- State Highway
- South Dakota Beneficial Use Stream
- South Dakota Beneficial Use Lake
- Watershed Boundary (HUC12)
- Project Boundary
- County Boundary
- Township/Range Boundary
- FEMA Flood Zone**
- A
- D
- NWI Wetland**
- Freshwater Emergent Wetland
- Freshwater Forested/ Shrub Wetland
- Lake, Pond, or Riverine Wetland



Base Map: USGS 7.5' Topographic Map
 Source: Esri ArcGIS Online service
 Quadrangle: Still Lake SE (1970), South Shore (1973),
 Watertown East (1969), Kranzburg (1970)
 Township/Range: T119N, R52W & T119N, R51W &
 T118N, R52W & T118N, R51W
 Codington County, South Dakota

Projection: NAD 1983 UTM Zone 14N



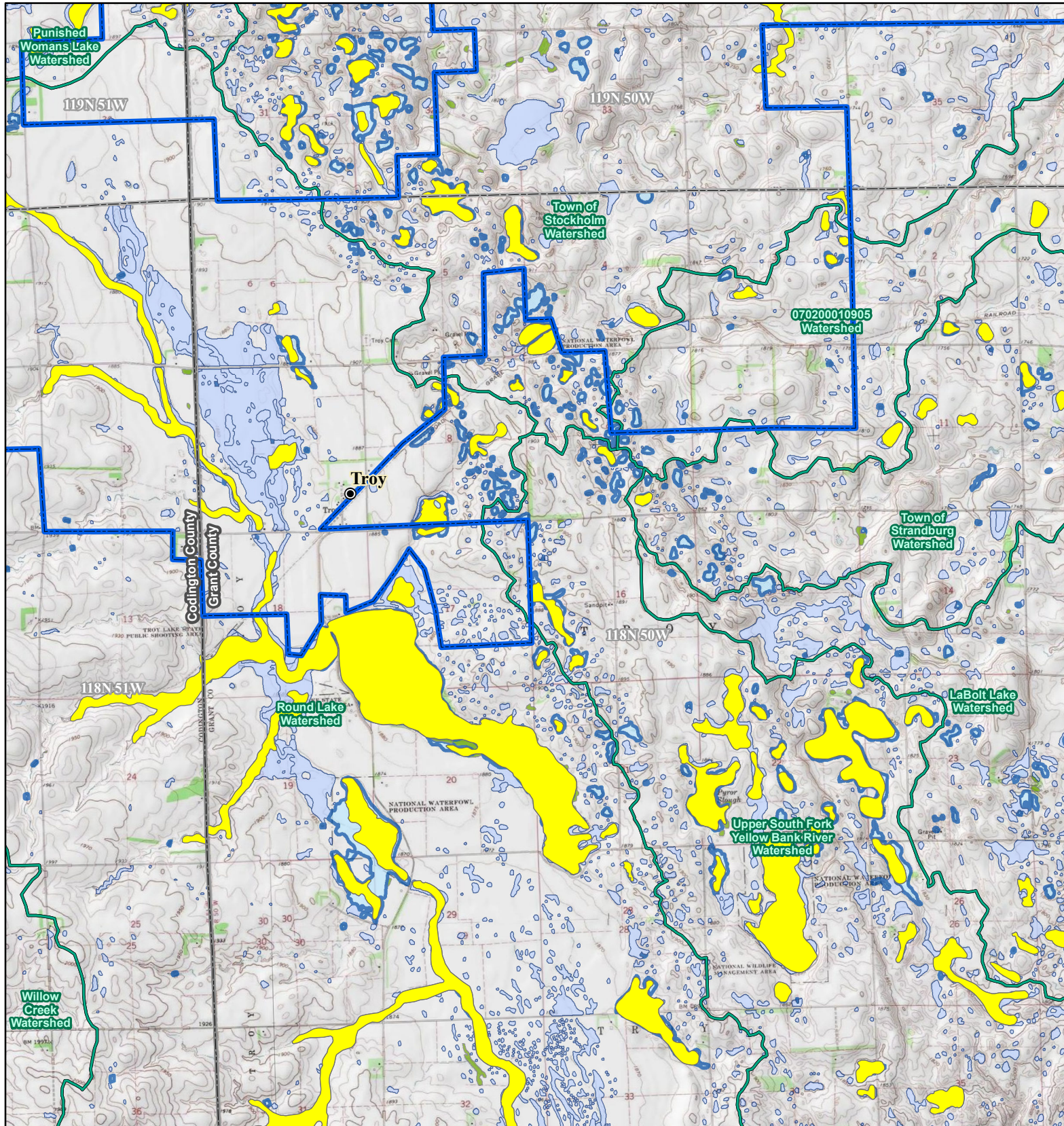
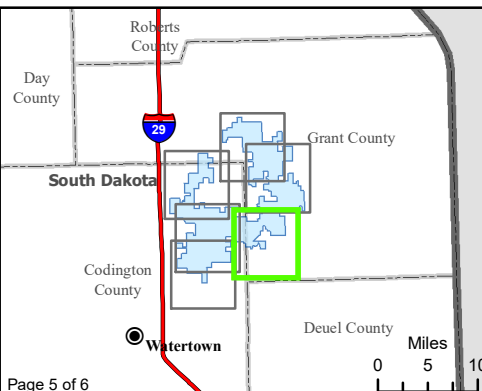


Figure 12. Water Resources
Crowned Ridge Wind Farm

- City
- U.S. Highway
- State Highway
- South Dakota Beneficial Use Stream
- South Dakota Beneficial Use Lake
- Watershed Boundary (HUC12)
- Project Boundary
- County Boundary
- Township/Range Boundary
- FEMA Flood Zone**
- A
- NWI Wetland**
- Freshwater Emergent Wetland
- Freshwater Forested/Shrub Wetland
- Lake, Pond, or Riverine Wetland



Kilometers
 0 1 2
 Miles
 0 1 2

Base Map: USGS 7.5' Topographic Map
 Source: Esri ArcGIS Online service
 Quadrangle: South Shore (1973), Stockholm (1973)
 Township/Range: T119N, R51W & T119N, R50W & T118N, R51W & T118N, R50W
 Codington and Grant Counties, South Dakota

Projection: NAD 1983 UTM Zone 14N



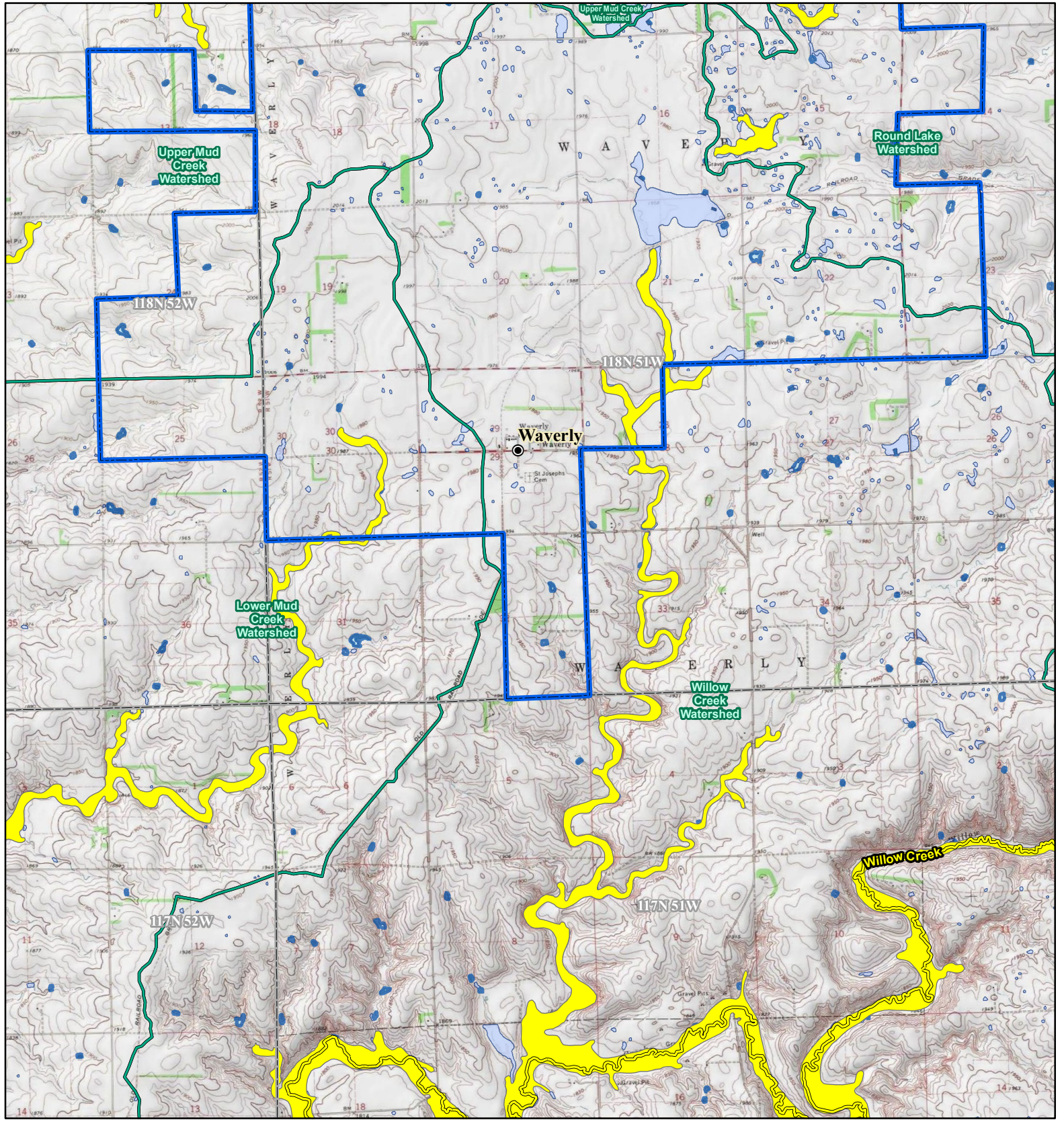
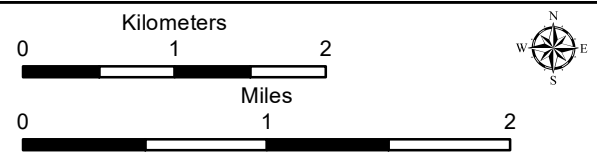
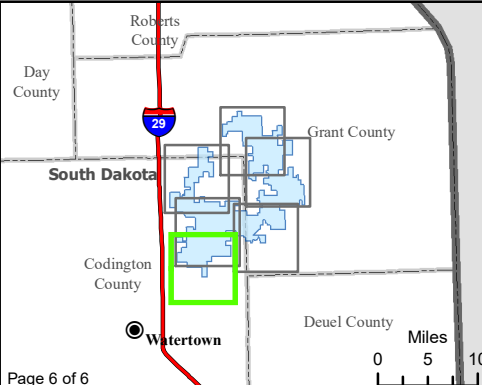


Figure 12. Water Resources
Crowned Ridge Wind Farm

- City
- U.S. Highway
- State Highway
- South Dakota Beneficial Use Stream
- South Dakota Beneficial Use Lake
- Watershed Boundary (HUC12)
- Project Boundary
- County Boundary
- Township/Range Boundary
- FEMA Flood Zone**
- A
- NWI Wetland**
- Freshwater Emergent Wetland
- Lake, Pond, or Riverine Wetland



Base Map: USGS 7.5' Topographic Map
 Source: Esri ArcGIS Online service
 Quadrangle: Still Lake SE (1970), South Shore (1973),
 Watertown East (1969), Kranzburg (1970)
 Township/Range: T118N, R52W &
 T118N, R51W
 Codington County, South Dakota

Projection: NAD 1983 UTM Zone 14N

