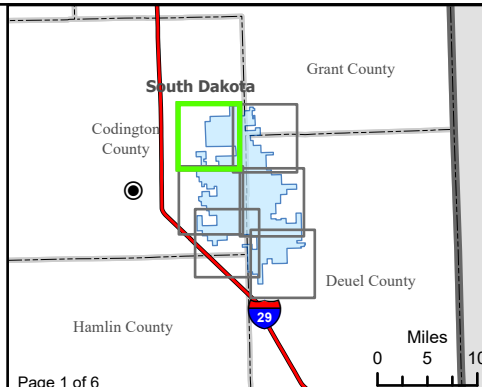


**Figure 12. Water Resources**

- Crowned Ridge II Wind Farm**
- Intersection of Floodplain and Project Infrastructure
  - Turbine
  - Alternate Turbine Location
  - City
  - Collector Line
  - Proposed Turbine Access Road
  - Crane Path
  - Bore Path
  - Flow Direction
  - South Dakota Beneficial Use Stream
  - Watershed Boundary (HUC12)
  - Project Boundary
  - County Boundary
  - Township/Range Boundary
  - FEMA Flood Zone**
  - A
  - NWI Wetland**
  - Freshwater Emergent Wetland
  - Freshwater Forested/ Shrub Wetland
  - Lake, Pond, or Riverine Wetland

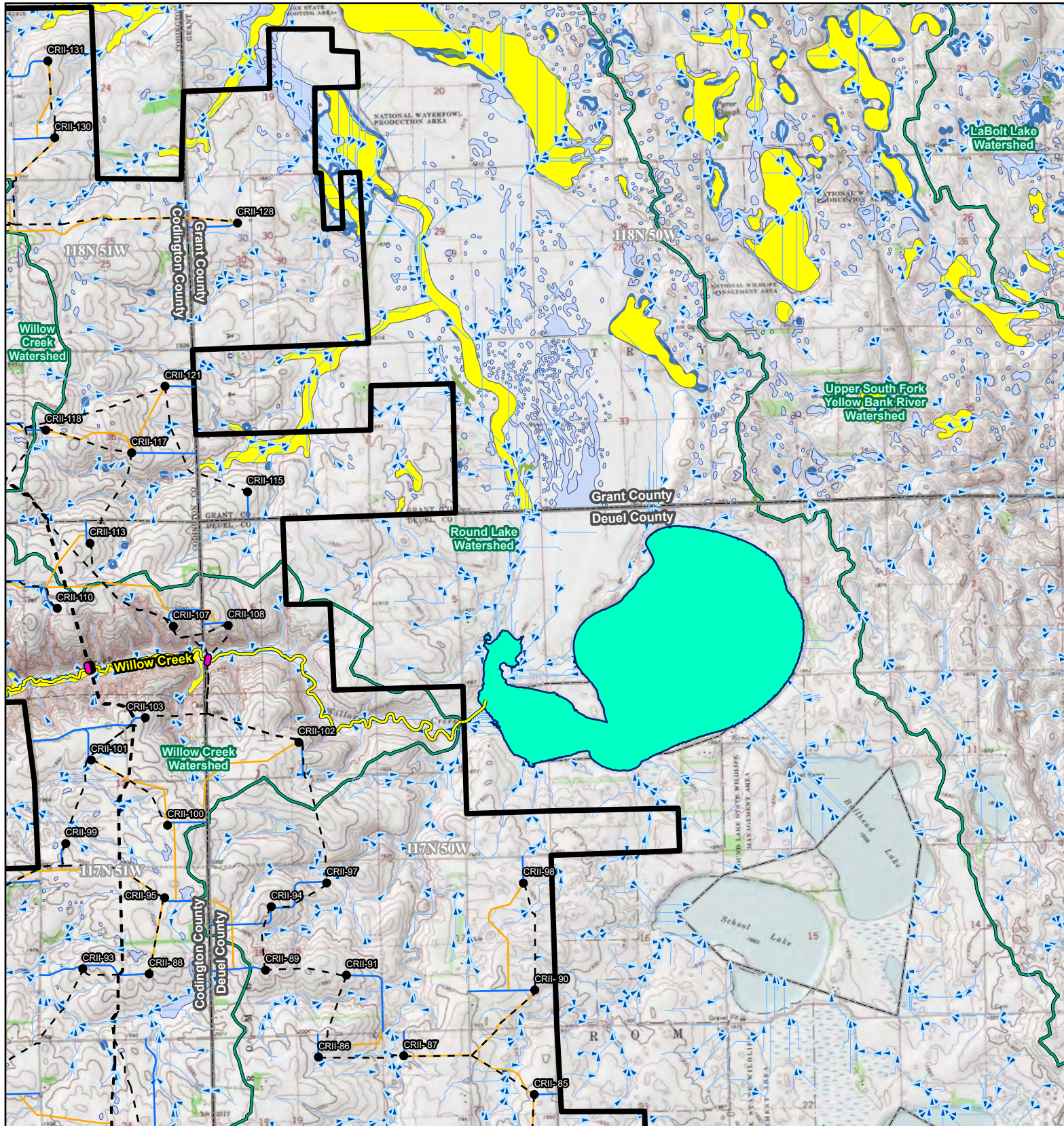


Kilometers  
0 1 2

Miles  
0 1 2

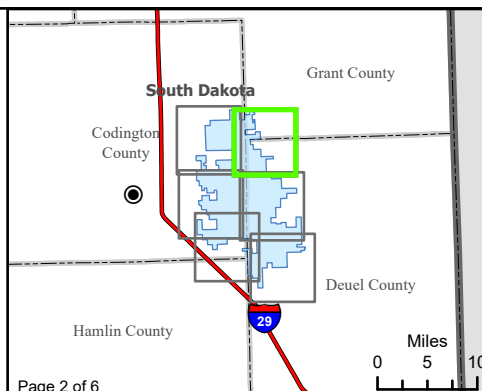
Base Map: USGS 7.5' Topographic Map  
Source: Copyright:© 2013 National Geographic Society, i-cubed  
Quadrangle: South Shore (1973), Kranzburg (1970)  
Township/Range: T118N, R51W & T117N, R51W  
Codington County, South Dakota

Projection:



**Figure 12. Water Resources**

- Crowned Ridge II Wind Farm**
- Turbine
  - Alternate Turbine Location
  - - Collector Line
  - Proposed Turbine Access Road
  - Crane Path
  - Bore Path
  - Flow Direction
  - South Dakota Beneficial Use Stream
  - South Dakota Beneficial Use Lake
  - Watershed Boundary (HUC12)
  - Project Boundary
  - County Boundary
  - Township/Range Boundary
  - FEMA Flood Zone**
  - A
  - NWI Wetland**
  - Freshwater Emergent Wetland
  - Freshwater Forested/Shrub Wetland
  - Lake, Pond, or Riverine Wetland



**Kilometers**

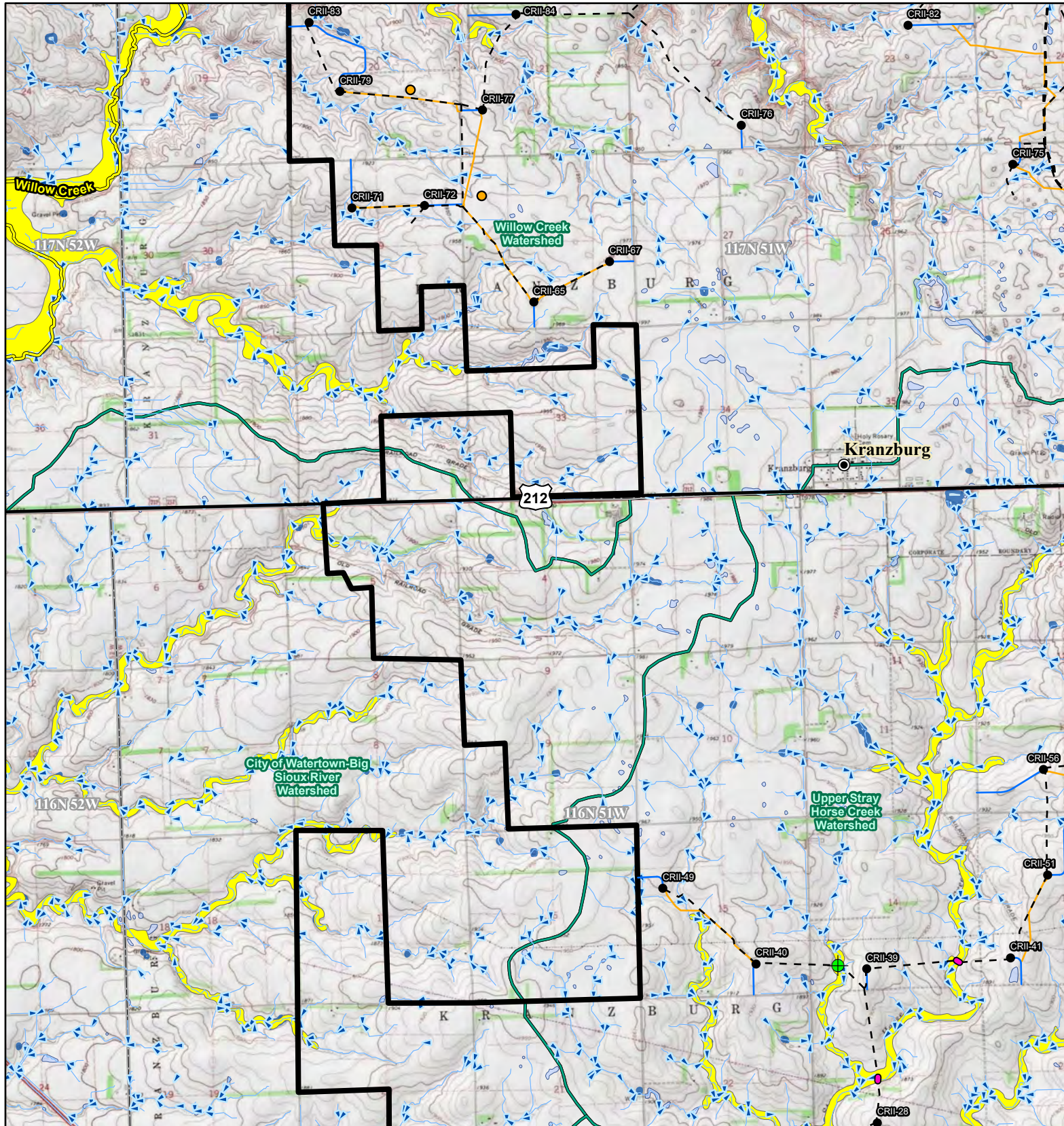
0 1 2

**Miles**

0 1 2

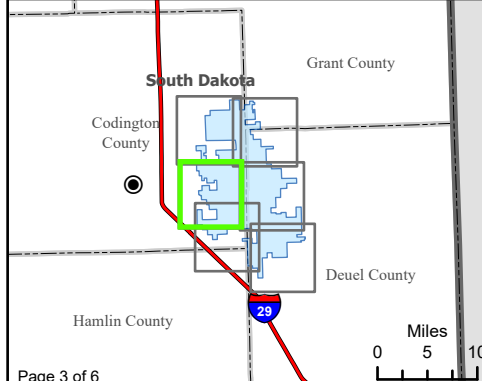
Base Map: USGS 7.5' Topographic Map  
 Source: Copyright:© 2013 National Geographic Society, i-cubed  
 Quadrangle: South Shore (1973), Stockholm (1973),  
 Kranzburg (1970), Goodwin (1970)  
 Township/Range: T118N, R51W & T118N, R50W &  
 T117N, R51W & T117N, R50W  
 Codington, Deuel, and Grant Counties, South Dakota

Projection:



**Figure 12. Water Resources**

- Crowned Ridge II Wind Farm**
- Intersection of Floodplain and Project Infrastructure
  - Turbine
  - Alternate Turbine Location
  - City
  - Collector Line
  - Proposed Turbine Access Road
  - Crane Path
  - Bore Path
  - U.S. Highway
  - Flow Direction
  - South Dakota Beneficial Use Stream
  - Watershed Boundary (HUC12)
  - Project Boundary
  - County Boundary
  - Township/Range Boundary
  - FEMA Flood Zone**
  - A
  - NWI Wetland**
  - Freshwater Emergent Wetland
  - Freshwater Forested/Shrub Wetland
  - Lake, Pond, or Riverine Wetland



Kilometers

0 1 2

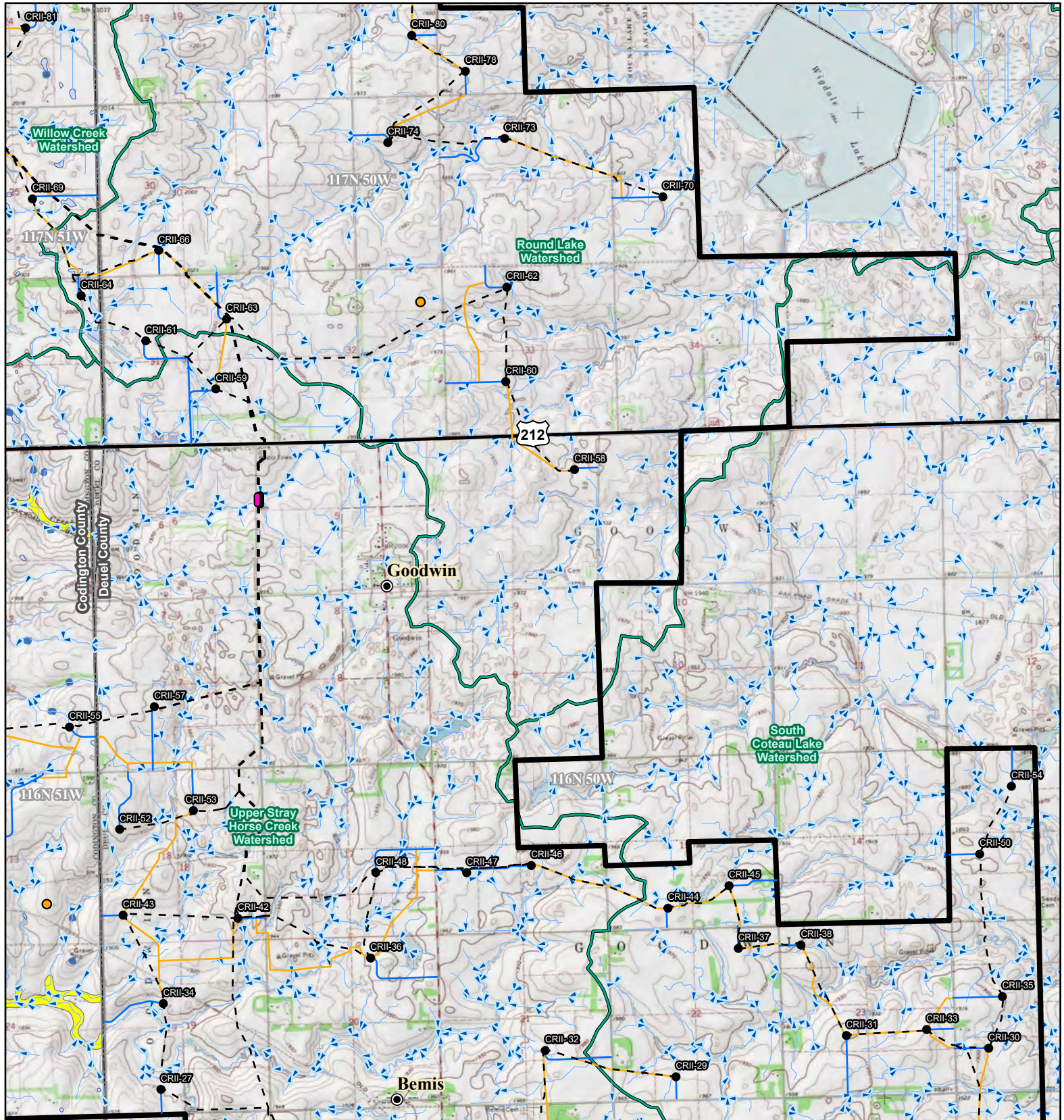
Miles

0 1 2

Base Map: USGS 7.5' Topographic Map  
 Source: Copyright:© 2013 National Geographic Society, i-cubed  
 Quadrangle: Kranzburg (1970),  
 Kranzburg SW (1981)  
 Township/Range: T117N, R51W &  
 T116N, R51W  
 Codington County, South Dakota

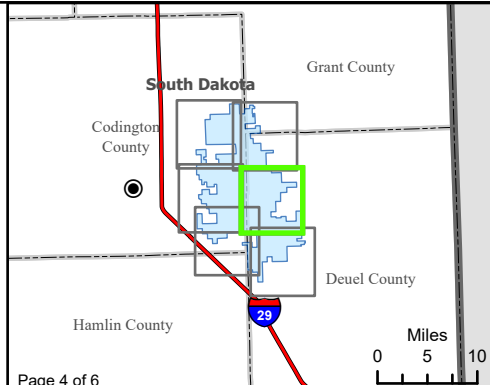
Projection:





**Figure 12. Water Resources**

- Crowned Ridge II Wind Farm**
- Turbine
  - Alternate Turbine Location
  - City
  - - Collector Line
  - Proposed Turbine Access Road
  - Crane Path
  - Bore Path
  - U.S. Highway
  - Flow Direction
- Watershed Boundary (HUC12)**
- Project Boundary**
- County Boundary**
- Township/Range Boundary**
- FEMA Flood Zone**
- A
- NWI Wetland**
- Freshwater Emergent Wetland
  - Lake, Pond, or Riverine Wetland



**Kilometers**

0 1 2

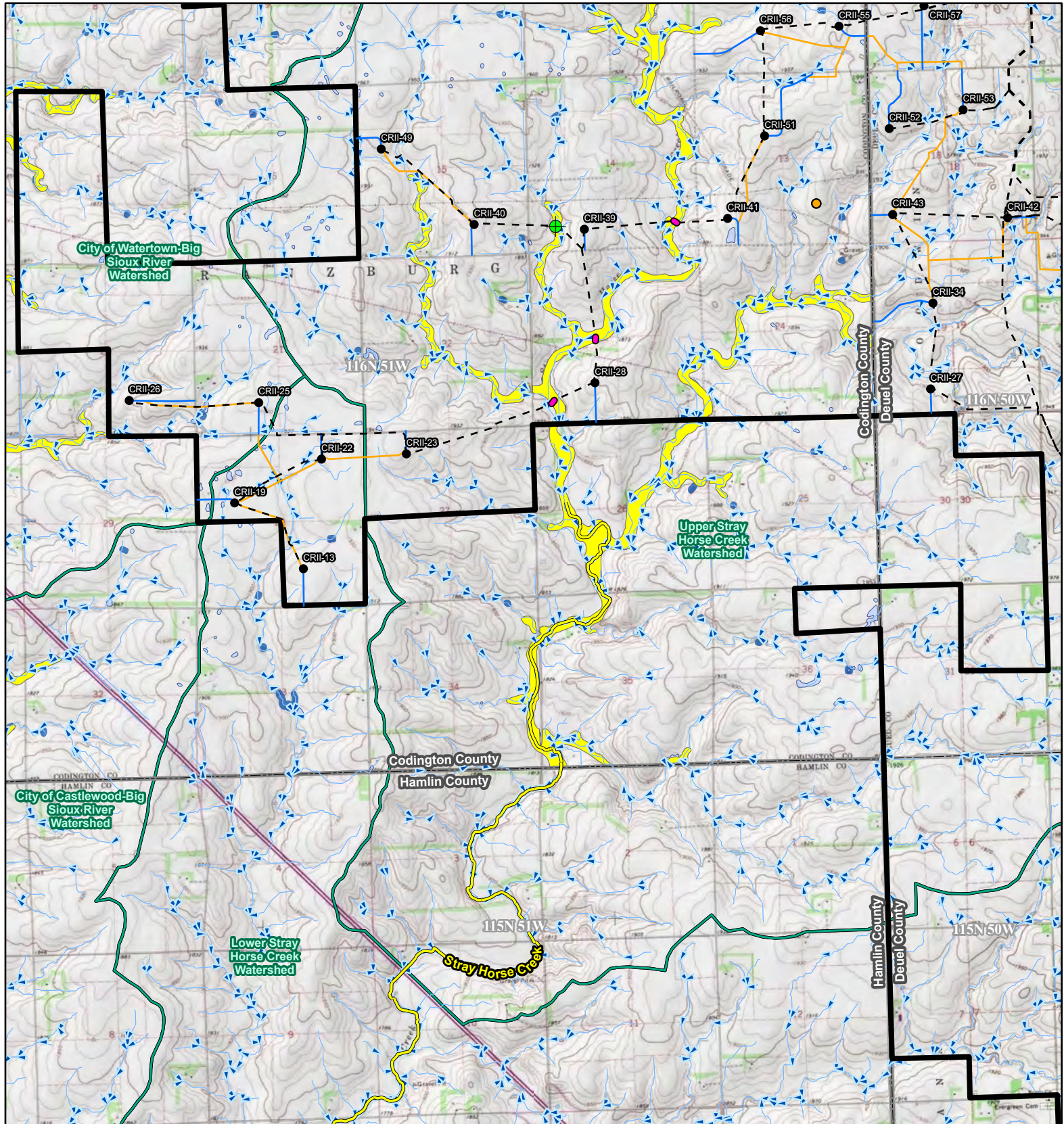
**Miles**

0 1 2

Base Map: USGS 7.5' Topographic Map  
 Source: Copyright:© 2013 National Geographic Society, i-cubed  
 Quadrangle: Kranzburg (1970), Goodwin (1970),  
 Kranzburg SW (1981), Bemis (1978)  
 Township/Range: T117N, R51W & T116N, R51W &  
 T117N, R50W & T116N, R50W  
 Codington and Deuel Counties, South Dakota

Projection:

**SWCA**  
 ENVIRONMENTAL CONSULTANTS



**Figure 12. Water Resources**

- Crowned Ridge II Wind Farm**
- Intersection of Floodplain and Project Infrastructure
  - Watershed Boundary (HUC12)
  - Turbine
  - Project Boundary
  - Alternate Turbine Location
  - County Boundary
  - Collector Line
  - Proposed Turbine Access Road
  - Township/Range Boundary
  - Crane Path
  - Bore Path
  - Flow Direction
  - South Dakota Beneficial Use Stream
  - FEMA Flood Zone A
  - NWI Wetland
  - Freshwater Emergent Wetland
  - Lake, Pond, or Riverine Wetland

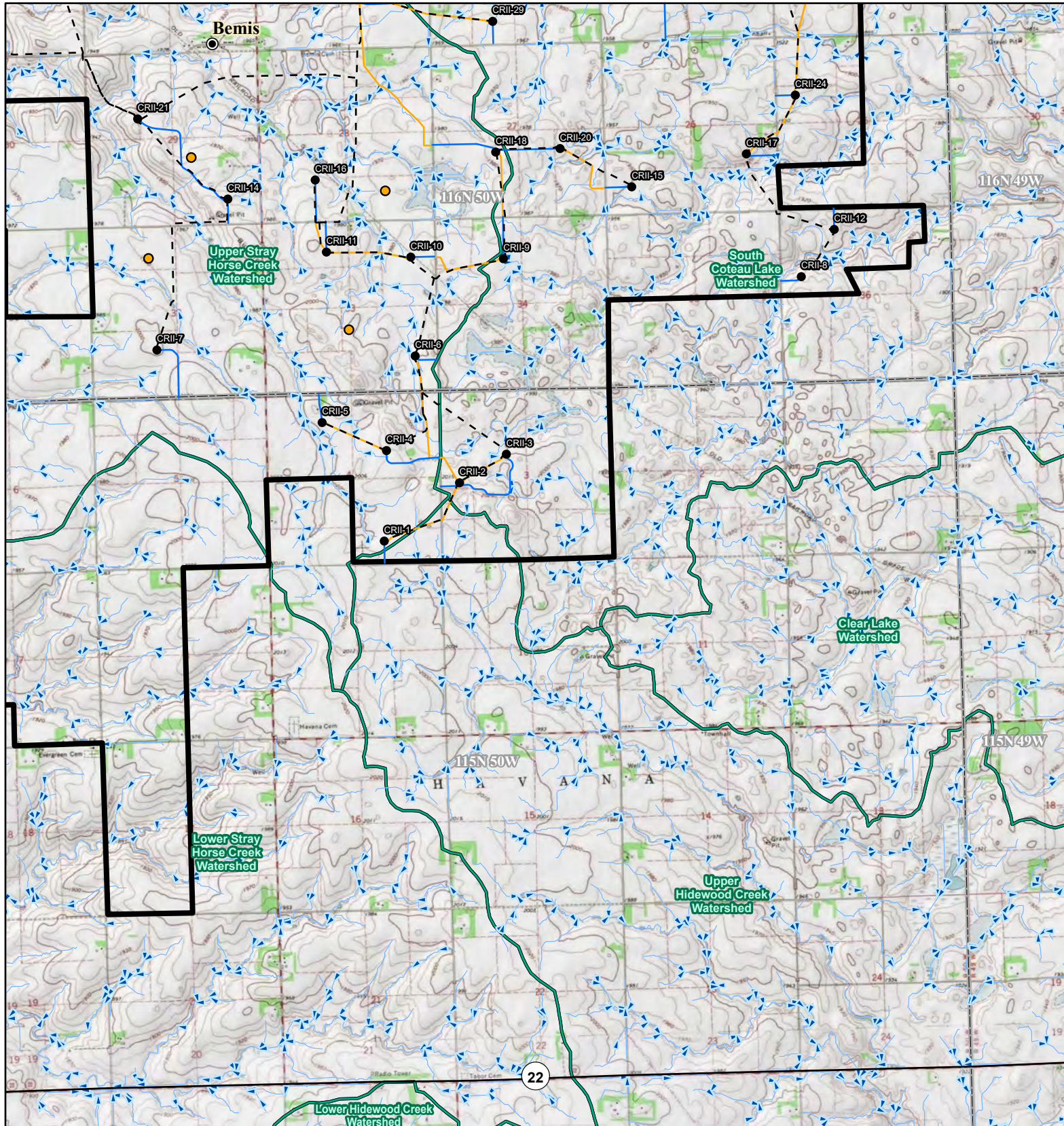


**Kilometers**  
0 1 2

**Miles**  
0 1 2

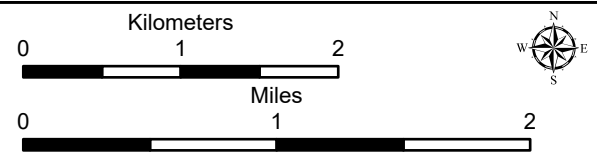
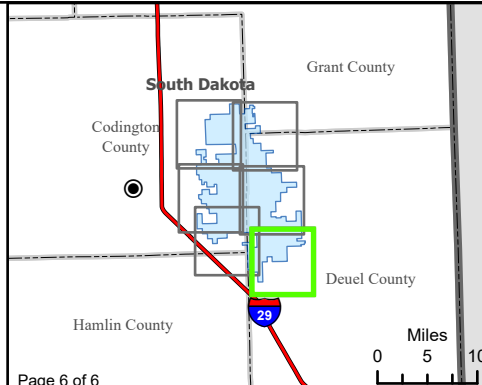
Base Map: USGS 7.5' Topographic Map  
 Source: Copyright:© 2013 National Geographic Society, i-cubed  
 Quadrangle: Kranzburg SW (1981), Bemis (1978)  
 Township/Range: T116N, R51W & T116N, R50W & T115N, R50W  
 Codington and Deuel Counties, South Dakota

Projection:



**Figure 12. Water Resources**

- |                                |                              |
|--------------------------------|------------------------------|
| ● Turbine                      | — State Highway              |
| ● Alternate Turbine Location   | → Flow Direction             |
| ● City                         | ▭ Watershed Boundary (HUC12) |
| - - Collector Line             | ▭ Project Boundary           |
| — Proposed Turbine Access Road | ▭ County Boundary            |
| — Crane Path                   | ▭ Township/Range Boundary    |
| — Bore Path                    |                              |



Base Map: USGS 7.5' Topographic Map  
 Source: Copyright:© 2013 National Geographic Society, i-cubed  
 Quadrangle: Kranzburg SW (1981), Bemis (1978)  
 Township/Range: T116N, R50W & T115N, R50W  
 Deuel County, South Dakota

Projection: **SWCA**  
 ENVIRONMENTAL CONSULTANTS