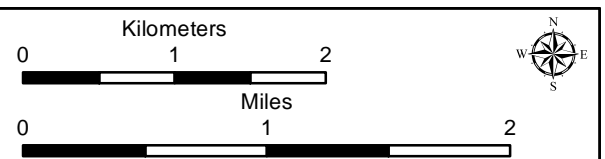
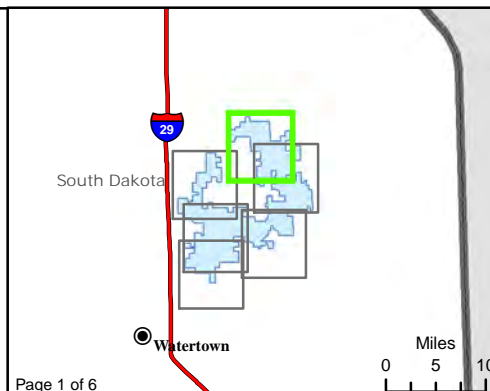


Figure 12. Water Resources
Crowned Ridge Wind Farm

- City
- Intersection of Floodplain and Project Infrastructure
- Turbine
- Access Road
- - Collector Line
- Crane Path
- Flow Direction
- South Dakota Beneficial Use Stream
- South Dakota Beneficial Use Lake
- Watershed Boundary (HUC12)
- Project Boundary
- County Boundary
- Township/Range Boundary
- Freshwater Wetland
- Freshwater Forested/Shrub Wetland
- Lake, Pond, or Riverine Wetland
- FEMA Flood Zone A



Base Map: USGS 7.5' Topographic Map
 Source: Esri ArcGIS Online service
 Quadrangle: Antelope Valley (1973),
 Twin Brooks (1973), Stockholm (1973)
 Township/Range: T120N, R51W &
 T120N, R50W & T119N, R50W
 Grant County, South Dakota

Page 00001 **SWCA**
 ENVIRONMENTAL CONSULTANTS

Projection: NAD 1983 UTM Zone 14N

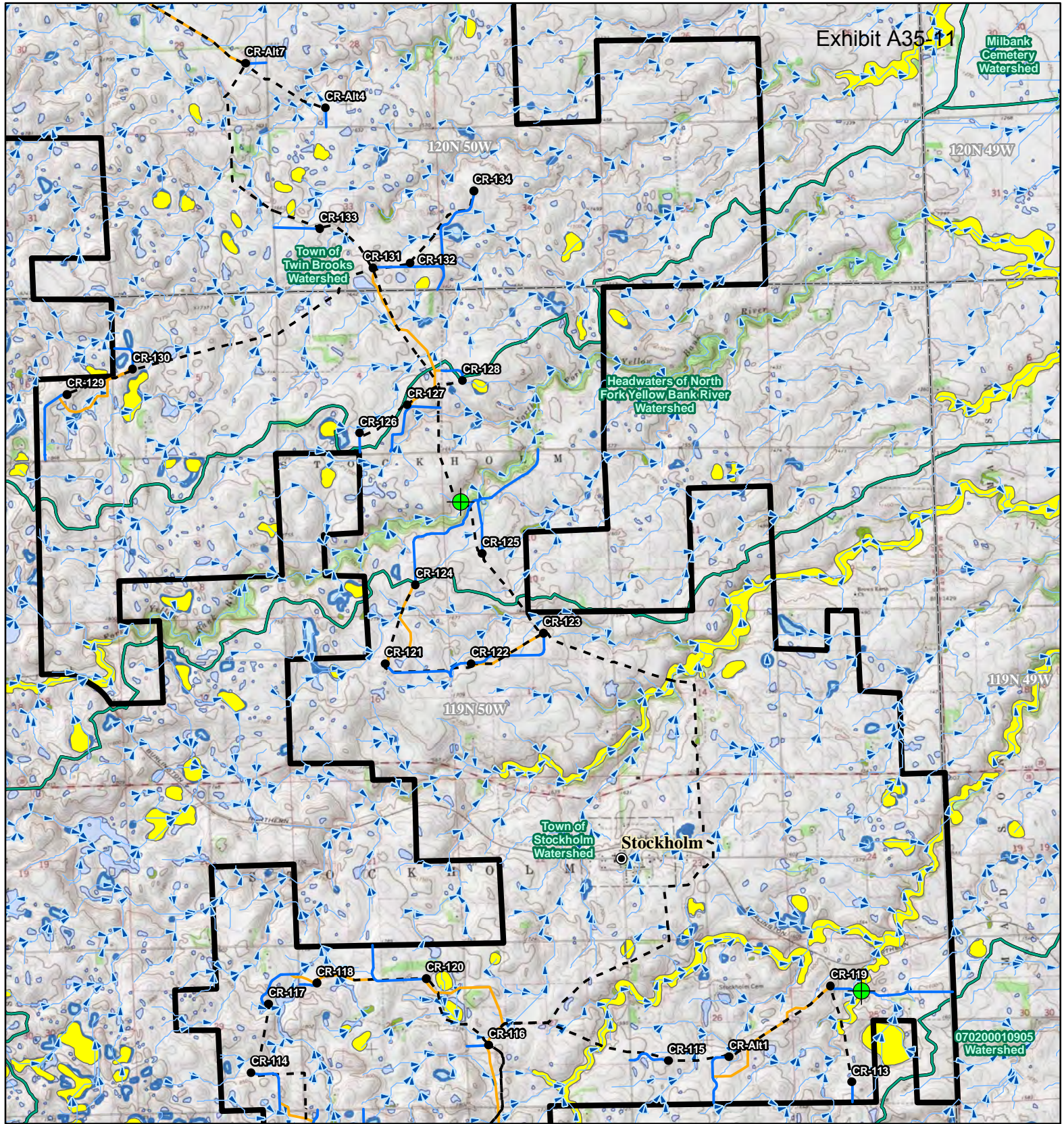
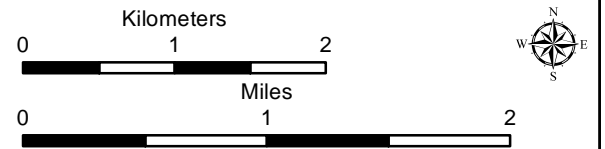
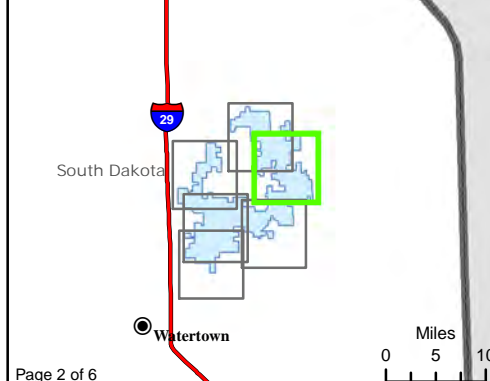


Exhibit A35-11

Figure 12. Water Resources
Crowned Ridge Wind Farm

- City
- Intersection of Floodplain and Project Infrastructure
- Turbine
- Access Road
- Collector Line
- Crane Path
- Flow Direction
- South Dakota Beneficial Use Stream
- South Dakota Beneficial Use Lake
- Watershed Boundary (HUC12)
- Project Boundary
- County Boundary
- Township/Range Boundary
- Freshwater Emergent Wetland
- Freshwater Forested/Shrub Wetland
- Lake, Pond, or Riverine Wetland
- FEMA Flood Zone A



Base Map: USGS 7.5' Topographic Map
 Source: Esri ArcGIS Online service
 Quadrangle: Twin Brooks (1973), Stockholm (1973)
 Township/Range: T120N, R50W & T119N, R50W
 Grant County, South Dakota
 Page 00002 **SWCA**
 ENVIRONMENTAL CONSULTANTS
 Projection: NAD 1983 UTM Zone 14N

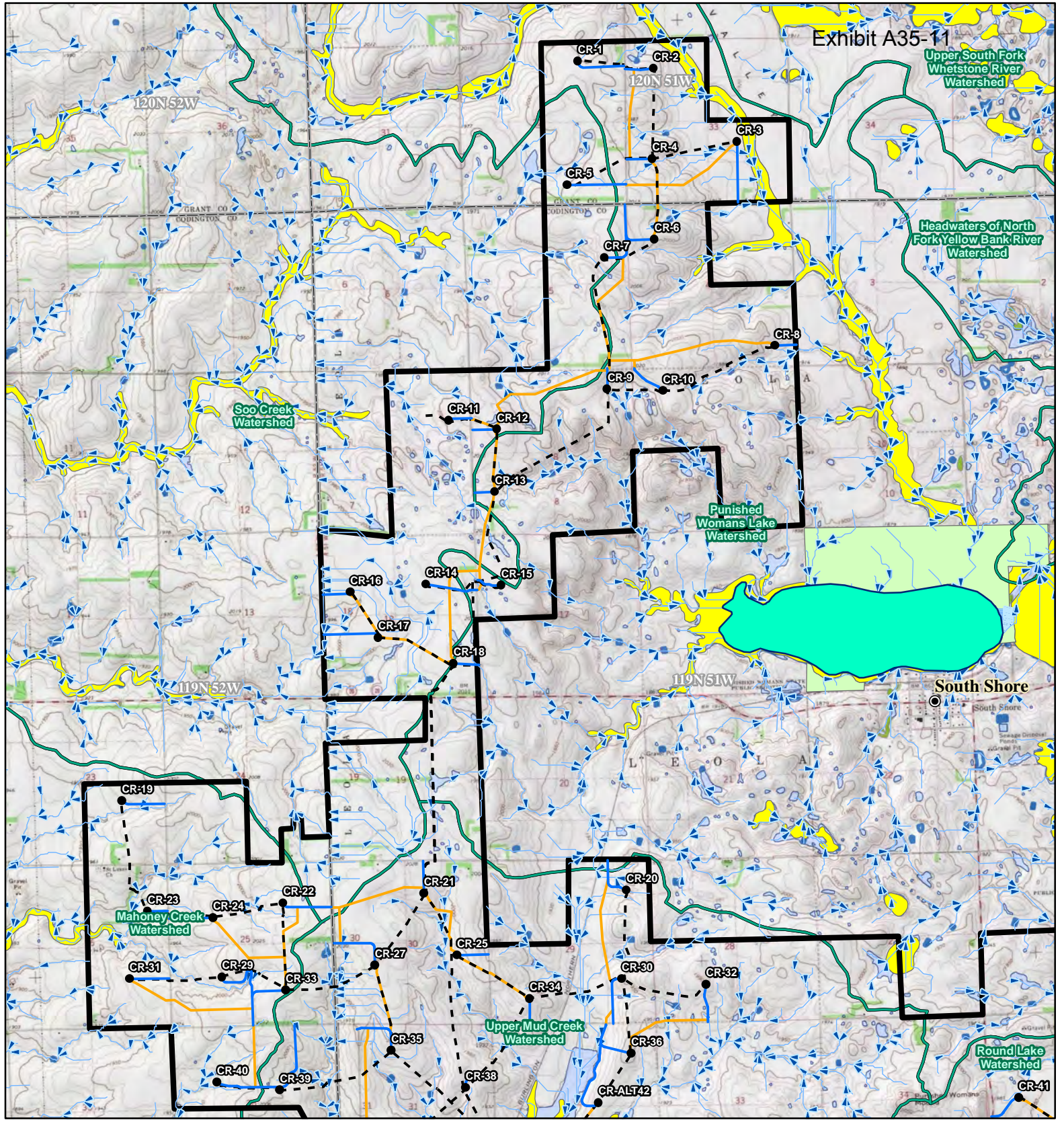
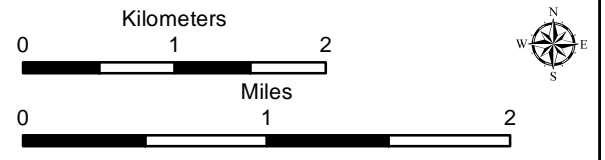
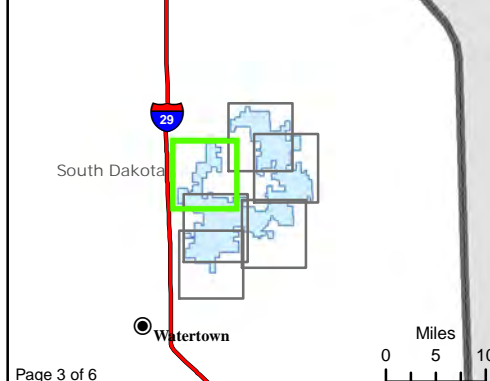


Figure 12. Water Resources
Crowned Ridge Wind Farm

- City
- Intersection of Floodplain and Project Infrastructure
- Turbine
- Access Road
- - Collector Line
- Crane Path
- Flow Direction
- South Dakota Beneficial Use Stream
- South Dakota Beneficial Use Lake
- Watershed Boundary (HUC12)
- Project Boundary
- County Boundary
- Township/Range Boundary
- Freshwater Emergent Wetland
- Freshwater Forested/Shrub Wetland
- Lake, Pond, or Riverine Wetland
- FEMA Flood Zone**
- A
- D



Base Map: USGS 7.5' Topographic Map
 Source: Esri ArcGIS Online service
 Quadrangle: Antelope Valley (1973), Still Lake SE (1970), South Shore (1973)
 Township/Range: T120N, R51W & T119N, R52W & T119N, R51W
 Codington and Grant Counties, South Dakota
Page 000003 **SWCA**
 ENVIRONMENTAL CONSULTANTS
 Projection: NAD 1983 UTM Zone 14N

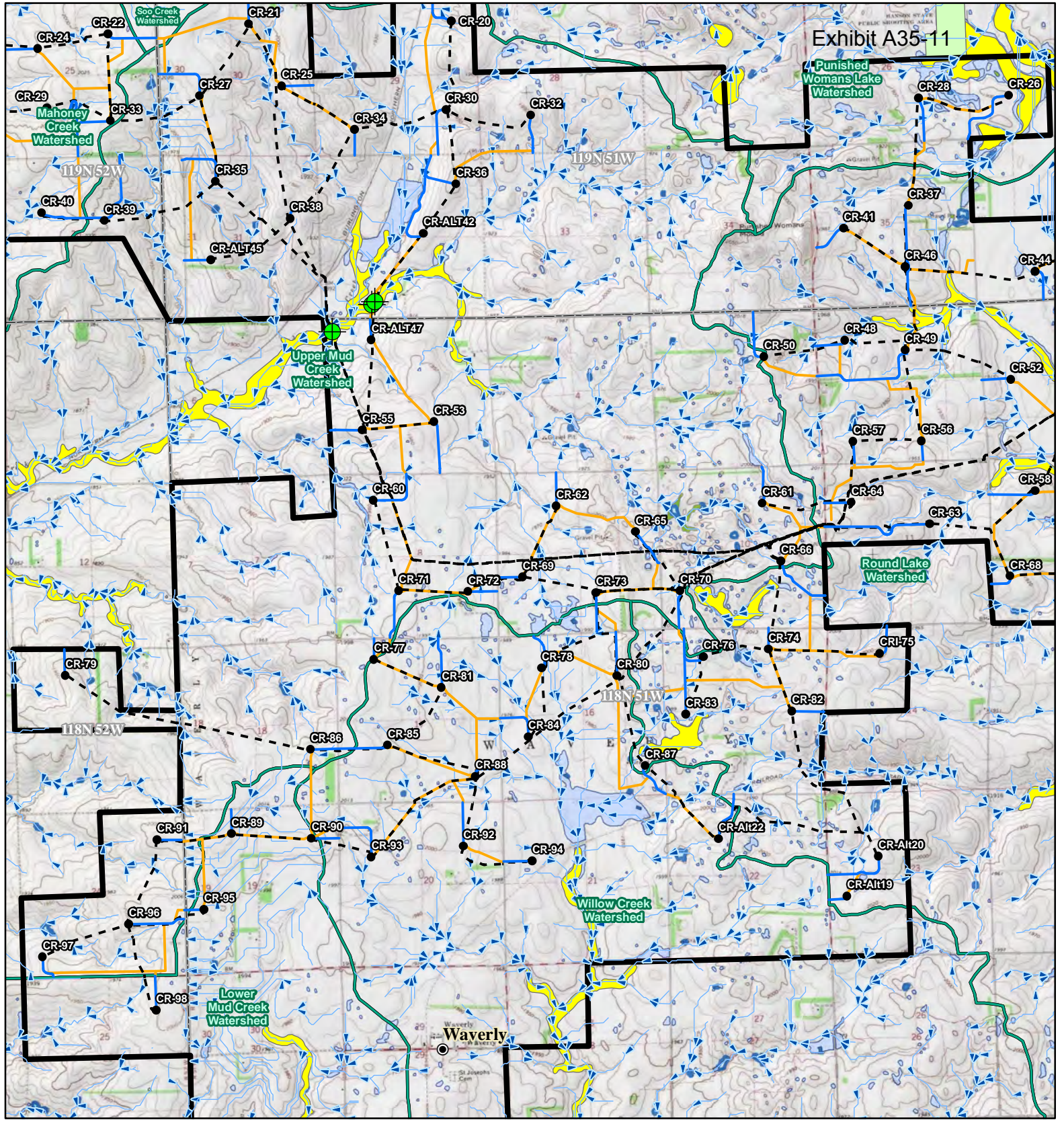
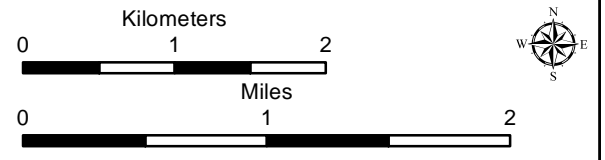
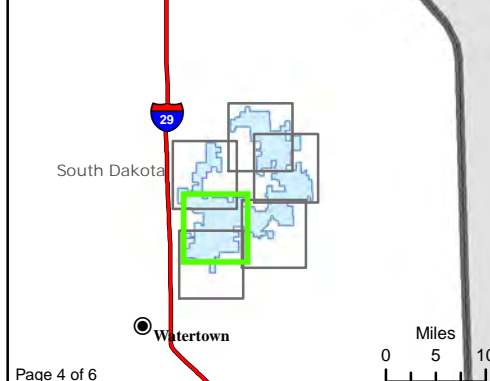


Figure 12. Water Resources
Crowned Ridge Wind Farm

- City
- Intersection of Floodplain and Project Infrastructure
- Turbine
- Access Road
- - Collector Line
- Crane Path
- Flow Direction
- South Dakota Beneficial Use Stream
- South Dakota Beneficial Use Lake
- Watershed Boundary (HUC12)
- ▭ Project Boundary
- ▭ County Boundary
- ▭ Township/Range Boundary
- ▭ Freshwater Emergent Wetland
- ▭ Freshwater Forested/Shrub Wetland
- ▭ Lake, Pond, or Riverine Wetland
- ▭ FEMA Flood Zone
 - A
 - D



Base Map: USGS 7.5' Topographic Map
 Source: Esri ArcGIS Online service
 Quadrangle: Still Lake SE (1970), South Shore (1973),
 Watertown East (1969), Kranzburg (1970)
 Township/Range: T119N, R52W & T119N, R51W &
 T118N, R52W & T118N, R51W
 Codington County, South Dakota
 Page 00004 **SWCA**
 ENVIRONMENTAL CONSULTANTS
 Projection: NAD 1983 UTM Zone 14N

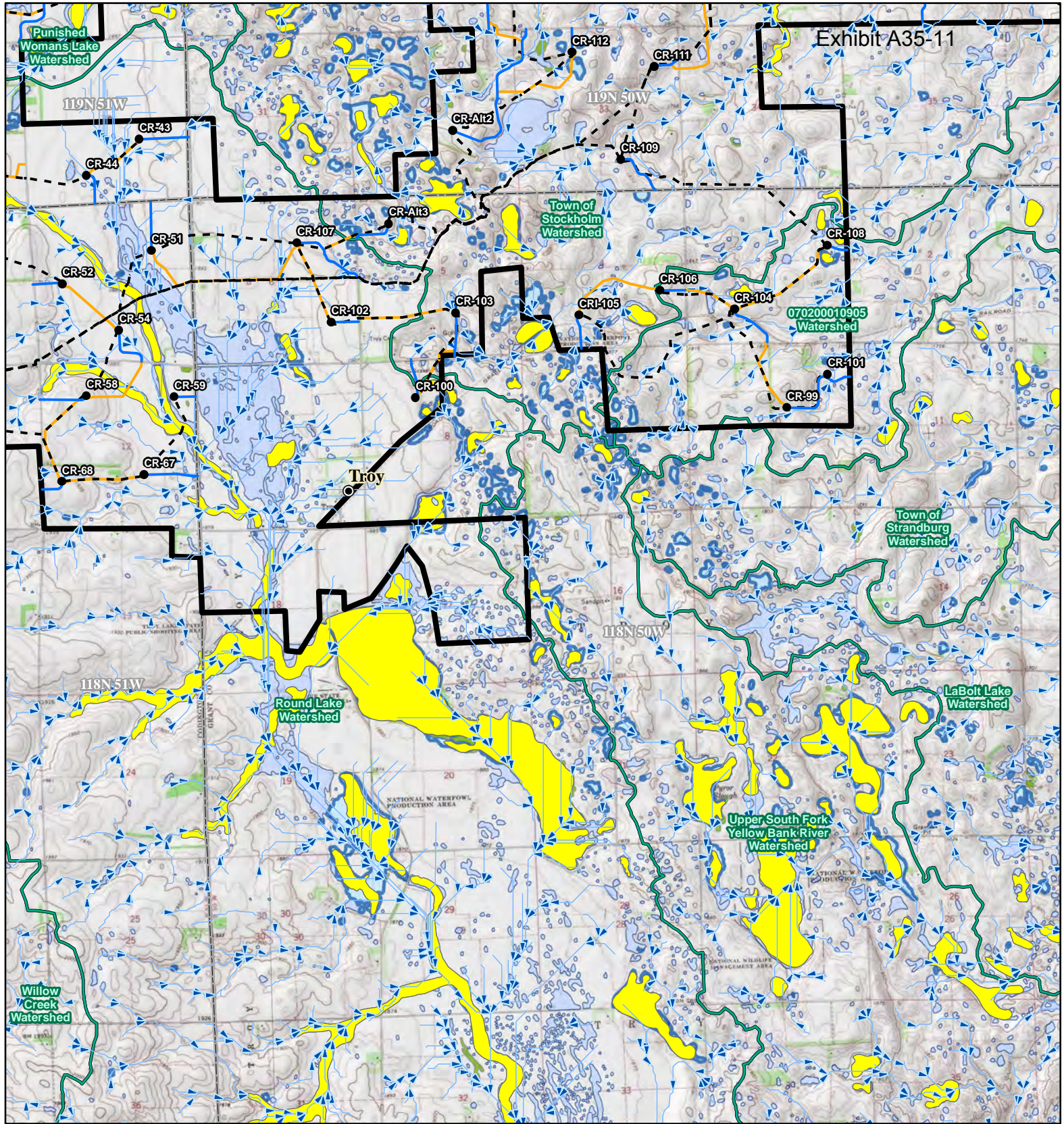
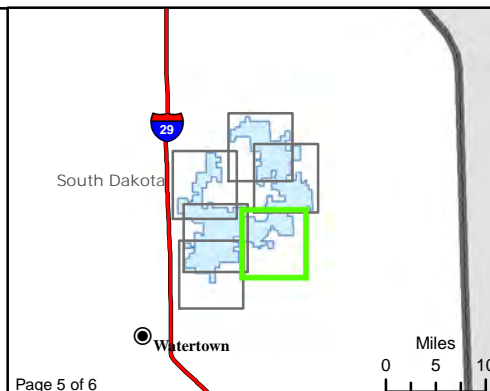


Exhibit A35-11

Figure 12. Water Resources
Crowned Ridge Wind Farm

- City
- Intersection of Floodplain and Project Infrastructure
- Turbine
- Access Road
- - Collector Line
- Crane Path
- Flow Direction
- South Dakota Beneficial Use Stream
- South Dakota Beneficial Use Lake
- Watershed Boundary (HUC12)
- Project Boundary
- County Boundary
- Township/Range Boundary
- Freshwater Emergent Wetland
- Freshwater Forested/Shrub Wetland
- Lake, Pond, or Riverine Wetland
- FEMA Flood Zone A



Kilometers

0 1 2

Miles

0 1 2

Base Map: USGS 7.5' Topographic Map
 Source: Esri ArcGIS Online service
 Quadrangle: South Shore (1973), Stockholm (1973)
 Township/Range: T119N, R51W & T119N, R50W & T118N, R51W & T118N, R50W
 Codington and Grant Counties, South Dakota

Page 000005 **SWCA**
ENVIRONMENTAL CONSULTANTS

Projection: NAD 1983 UTM Zone 14N

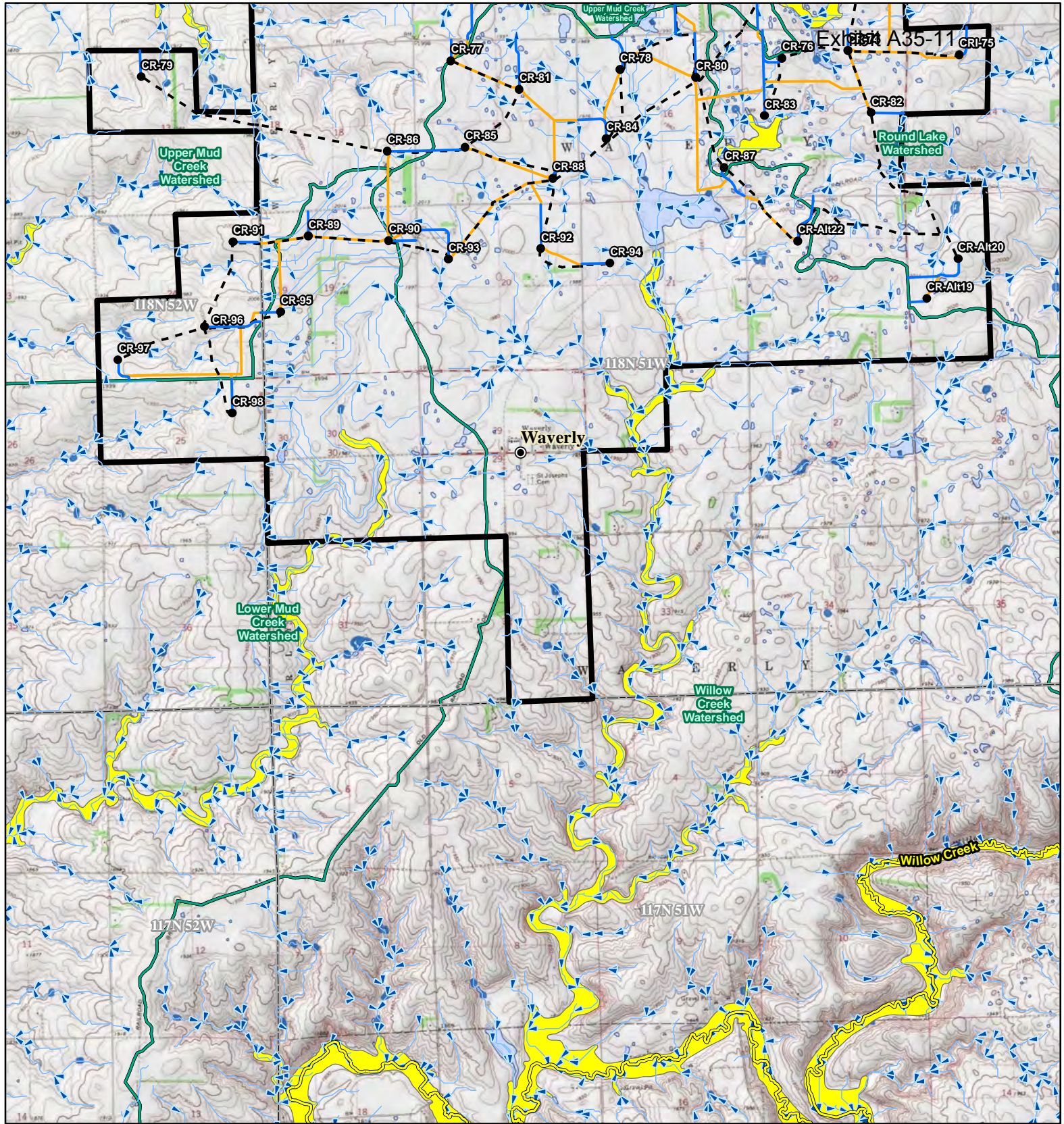
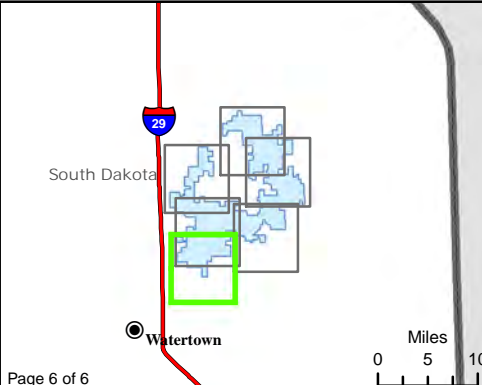


Figure 12. Water Resources
Crowned Ridge Wind Farm

- City
- Intersection of Floodplain and Project Infrastructure
- Turbine
- Access Road
- Collector Line
- Crane Path
- Flow Direction
- South Dakota Beneficial Use Stream
- South Dakota Beneficial Use Lake
- Watershed Boundary (HUC12)
- ▭ Project Boundary
- ▭ County Boundary
- ▭ Township/Range Boundary
- ▭ Freshwater Emergent Wetland
- ▭ Freshwater Forested/Shrub Wetland
- ▭ Lake, Pond, or Riverine Wetland
- ▭ FEMA Flood Zone A



Kilometers

0 1 2

Miles

0 1 2

Base Map: USGS 7.5' Topographic Map
 Source: Esri ArcGIS Online service
 Quadrangle: Still Lake SE (1970), South Shore (1973),
 Watertown East (1969), Kranzburg (1970)
 Township/Range: T118N, R52W &
 T118N, R51W
 Codington County, South Dakota

Page 000006 **SWCA**
ENVIRONMENTAL CONSULTANTS

Projection: NAD 1983 UTM Zone 14N