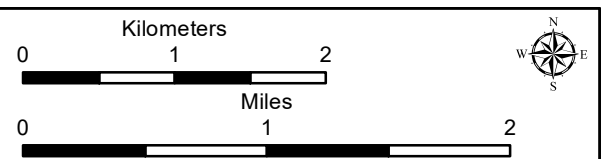
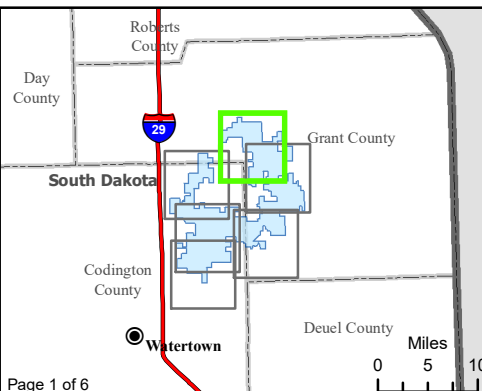


**Figure 12. Water Resources**  
Crowned Ridge Wind Farm

- |                                      |                                      |
|--------------------------------------|--------------------------------------|
| ● City                               | ▭ County Boundary                    |
| — U.S. Highway                       | ▭ Township/Range Boundary            |
| — State Highway                      | <b>FEMA Flood Zone</b>               |
| → Flow Direction                     | ■ A                                  |
| — South Dakota Beneficial Use Stream | <b>NWI Wetland</b>                   |
| ■ South Dakota Beneficial Use Lake   | ■ Freshwater Emergent Wetland        |
| ▭ Watershed Boundary (HUC12)         | ■ Freshwater Forested/ Shrub Wetland |
| ▭ Project Boundary                   | ■ Lake, Pond, or Riverine Wetland    |



Base Map: USGS 7.5' Topographic Map  
Source: Esri ArcGIS Online service  
Quadrangle: Antelope Valley (1973),  
Twin Brooks (1973), Stockholm (1973)  
Township/Range: T120N, R51W &  
T120N, R50W & T119N, R50W  
Grant County, South Dakota

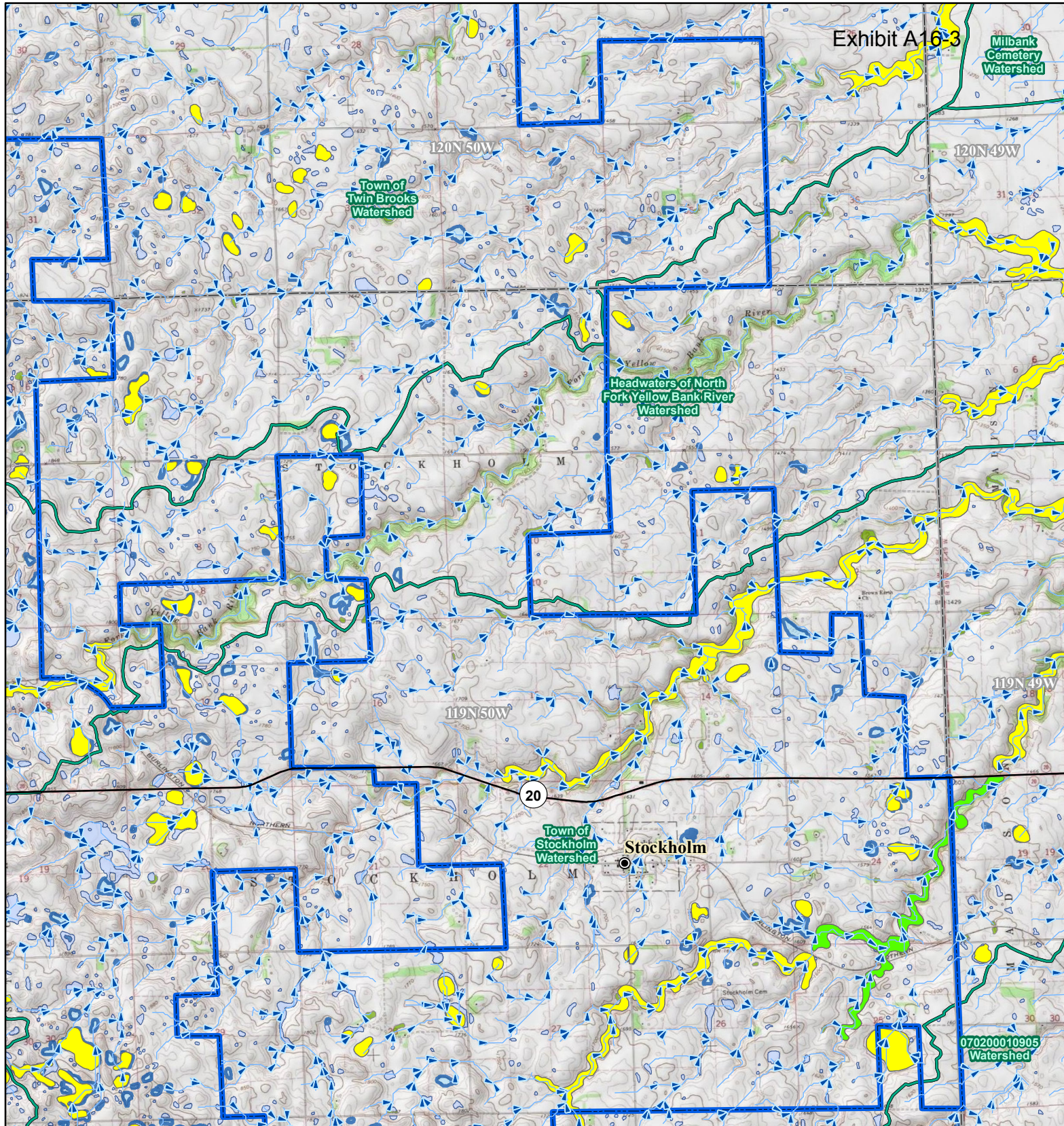
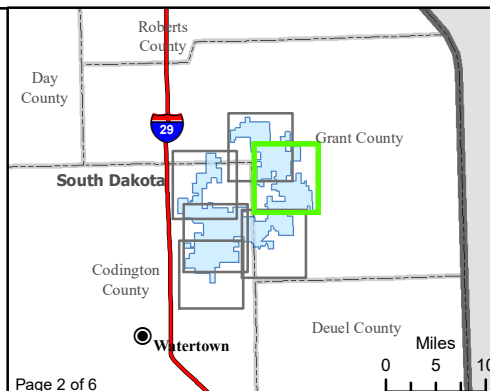


Exhibit A16-3

**Figure 12. Water Resources**  
Crowned Ridge Wind Farm

- City
- U.S. Highway
- State Highway
- Flow Direction
- South Dakota Beneficial Use Stream
- South Dakota Beneficial Use Lake
- Watershed Boundary (HUC12)
- Project Boundary
- County Boundary
- Township/Range Boundary
- FEMA Flood Zone**
- A
- Floodplain Intersecting Project Infrastructure
- NWI Wetland**
- Freshwater Emergent Wetland
- Freshwater Forested/Shrub Wetland
- Lake, Pond, or Riverine Wetland



Kilometers

0 1 2

---

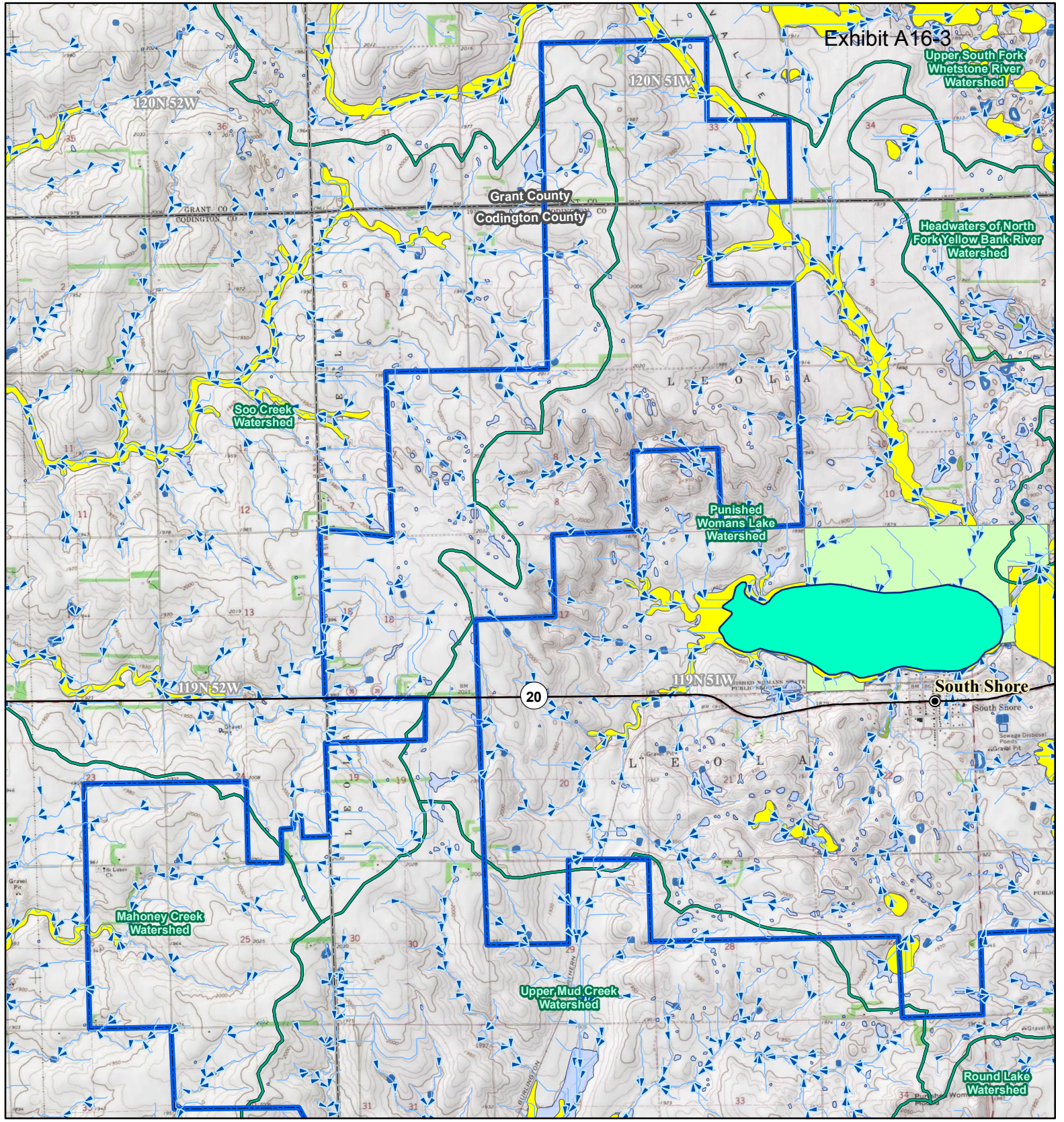
Miles

0 1 2

Base Map: USGS 7.5' Topographic Map  
 Source: Esri ArcGIS Online service  
 Quadrangle: Twin Brooks (1973),  
 Stockholm (1973)  
 Township/Range: T120N, R50W &  
 T119N, R50W  
 Grant County, South Dakota

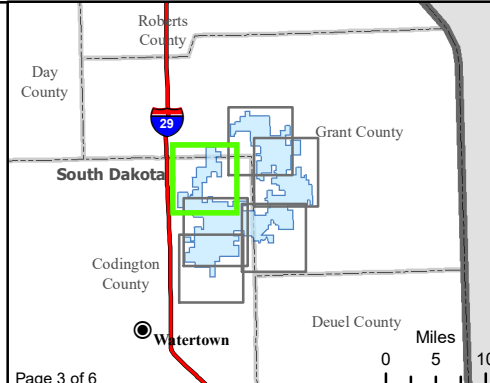
Page 00002 **SWCA**  
 ENVIRONMENTAL CONSULTANTS

Projection: NAD 1983 UTM Zone 14N



**Figure 12. Water Resources**  
Crowned Ridge Wind Farm

- City
- U.S. Highway
- State Highway
- Flow Direction
- South Dakota Beneficial Use Stream
- South Dakota Beneficial Use Lake
- Watershed Boundary (HUC12)
- Project Boundary
- County Boundary
- Township/Range Boundary
- FEMA Flood Zone**
- A
- D
- NWI Wetland**
- Freshwater Emergent Wetland
- Freshwater Forested/ Shrub Wetland
- Lake, Pond, or Riverine Wetland



Kilometers

0 1 2

---

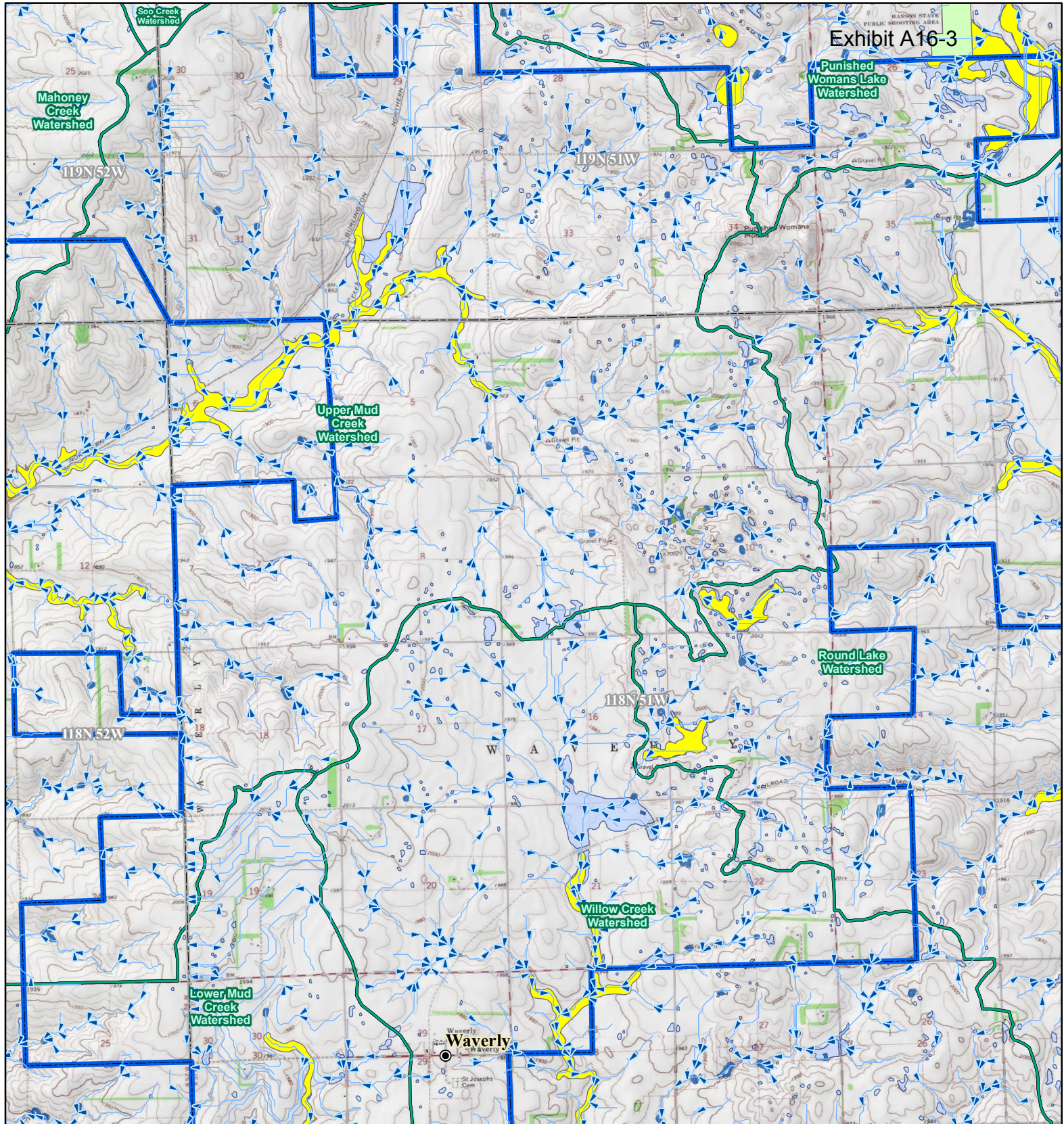
Miles

0 1 2

Base Map: USGS 7.5' Topographic Map  
 Source: Esri ArcGIS Online service  
 Quadrangle: Antelope Valley (1973),  
 Still Lake SE (1970), South Shore (1973)  
 Township/Range: T120N, R51W &  
 T119N, R52W & T119N, R51W  
 Codington and Grant Counties, South Dakota

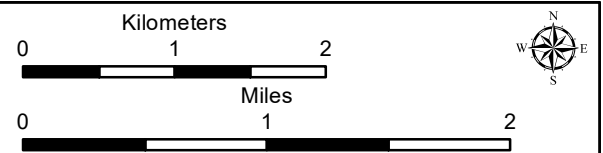
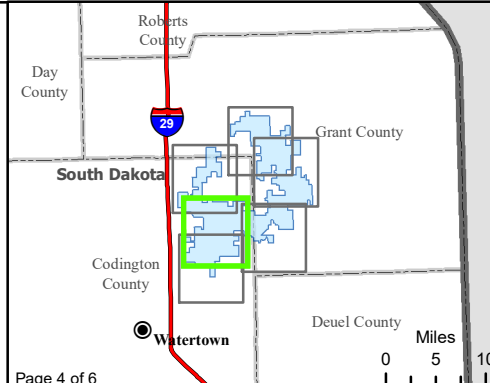
**Page 000003** **SWCA**  
ENVIRONMENTAL CONSULTANTS

Projection: NAD 1983 UTM Zone 14N

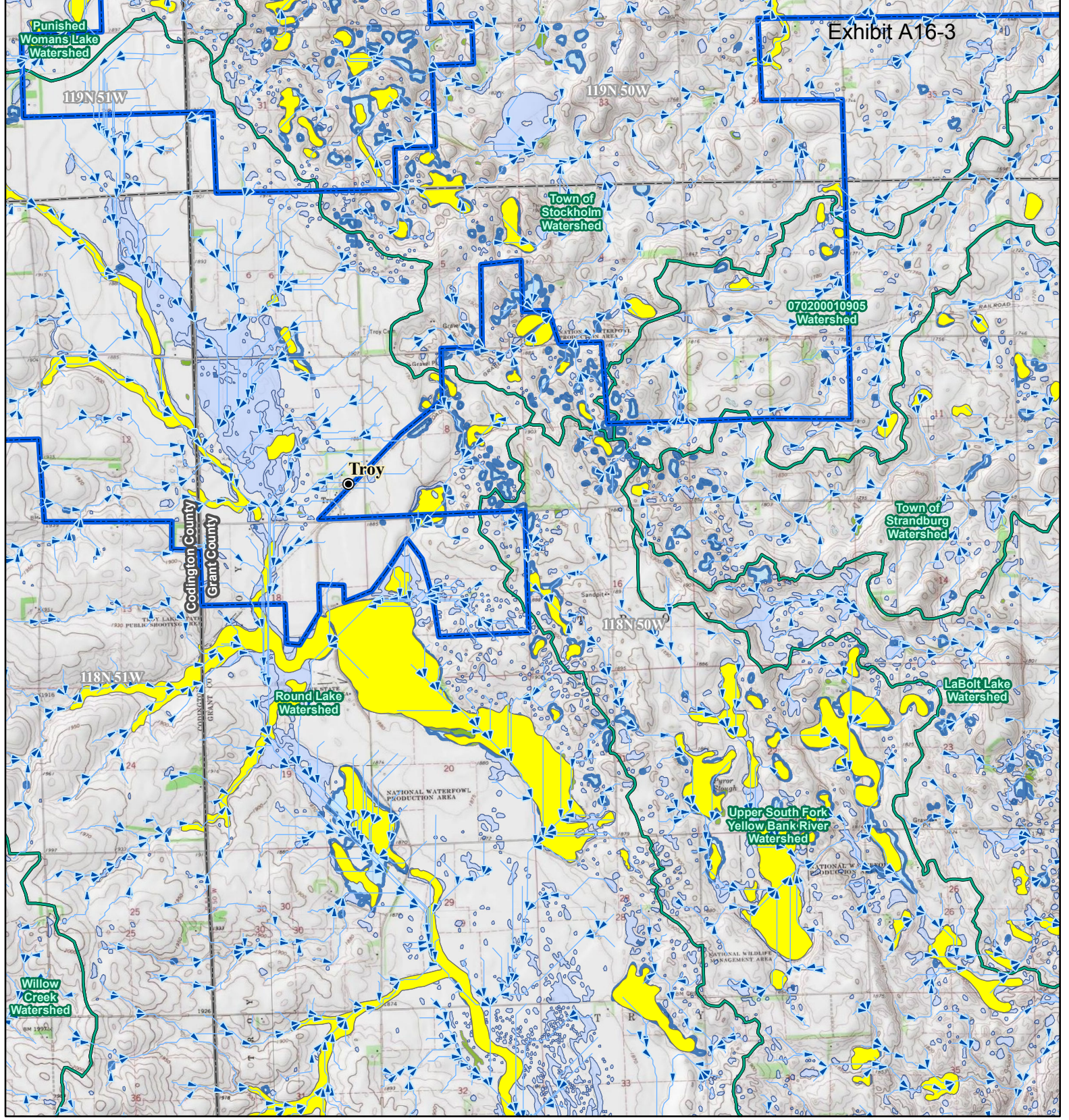


**Figure 12. Water Resources**  
Crowned Ridge Wind Farm

- City
- U.S. Highway
- State Highway
- Flow Direction
- South Dakota Beneficial Use Stream
- South Dakota Beneficial Use Lake
- Watershed Boundary (HUC12)
- Project Boundary
- County Boundary
- Township/Range Boundary
- FEMA Flood Zone**
- A
- D
- NWI Wetland**
- Freshwater Emergent Wetland
- Freshwater Forested/Shrub Wetland
- Lake, Pond, or Riverine Wetland

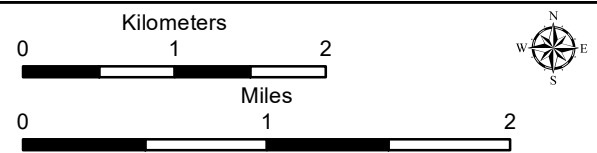
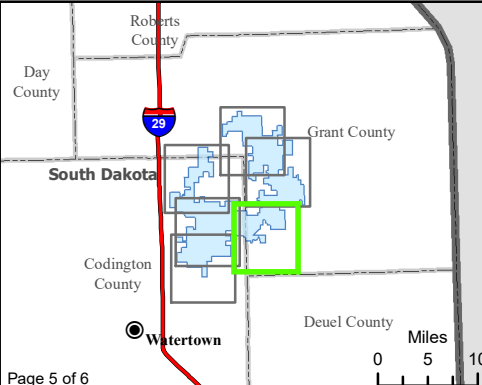


Base Map: USGS 7.5' Topographic Map  
 Source: Esri ArcGIS Online service  
 Quadrangle: Still Lake SE (1970), South Shore (1973),  
 Watertown East (1969), Kranzburg (1970)  
 Township/Range: T119N, R52W & T119N, R51W &  
 T118N, R52W & T118N, R51W  
 Codington County, South Dakota  
**Page 000004 SWCA**  
 ENVIRONMENTAL CONSULTANTS  
 Projection: NAD 1983 UTM Zone 14N



**Figure 12. Water Resources**  
Crowned Ridge Wind Farm

- City
- U.S. Highway
- State Highway
- Flow Direction
- South Dakota Beneficial Use Stream
- South Dakota Beneficial Use Lake
- Watershed Boundary (HUC12)
- Project Boundary
- County Boundary
- Township/Range Boundary
- FEMA Flood Zone**
- A
- NWI Wetland**
- Freshwater Emergent Wetland
- Freshwater Forested/ Shrub Wetland
- Lake, Pond, or Riverine Wetland



Base Map: USGS 7.5' Topographic Map  
 Source: Esri ArcGIS Online service  
 Quadrangle: South Shore (1973),  
 Stockholm (1973)  
 Township/Range: T119N, R51W & T119N, R50W &  
 T118N, R51W & T118N, R50W  
 Codington and Grant Counties, South Dakota  
 Page 000005 **SWCA**  
 ENVIRONMENTAL CONSULTANTS  
 Projection: NAD 1983 UTM Zone 14N

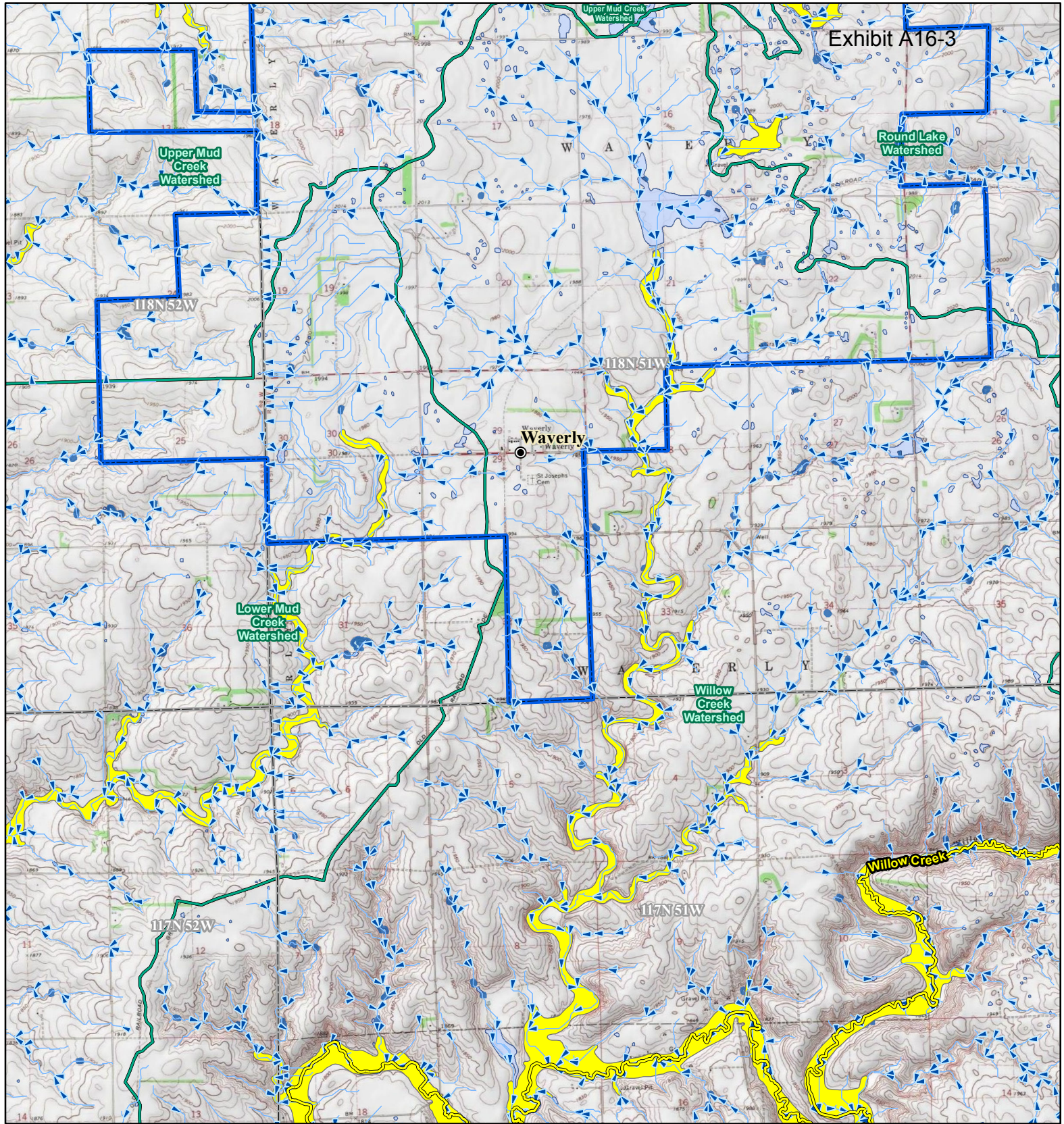


Exhibit A16-3

Upper Mud Creek Watershed

Round Lake Watershed

Waverly

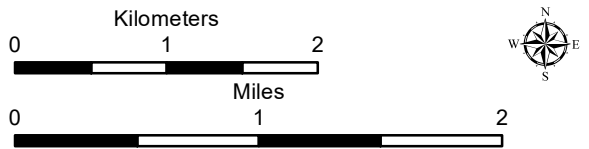
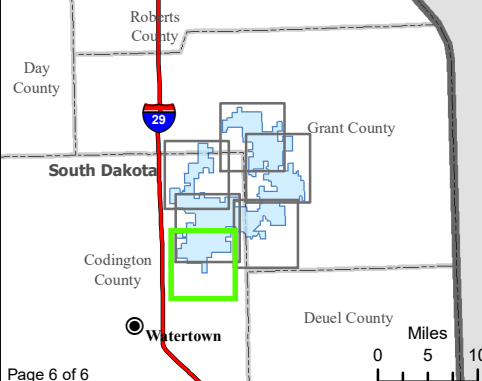
Lower Mud Creek Watershed

Willow Creek Watershed

Willow Creek

**Figure 12. Water Resources**  
Crowned Ridge Wind Farm

- City
- U.S. Highway
- State Highway
- Flow Direction
- South Dakota Beneficial Use Stream
- South Dakota Beneficial Use Lake
- Watershed Boundary (HUC12)
- Project Boundary
- County Boundary
- Township/Range Boundary
- FEMA Flood Zone**
- A
- NWI Wetland**
- Freshwater Emergent Wetland
- Lake, Pond, or Riverine Wetland



Base Map: USGS 7.5' Topographic Map  
 Source: Esri ArcGIS Online service  
 Quadrangle: Still Lake SE (1970), South Shore (1973),  
 Watertown East (1969), Kranzburg (1970)  
 Township/Range: T118N, R52W &  
 T118N, R51W  
 Codington County, South Dakota