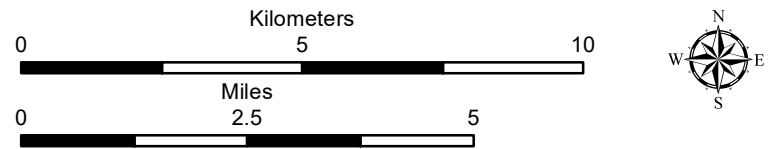


State and Federal Lands

- Federal Waterfowl Production Area
- South Dakota Game Production Area
- South Dakota Private Lands Hunting Access

Figure 2. Public Land and Facilities
Crowned Ridge Wind Farm

- City
- School
- Turbine
- Collector Line
- Proposed Turbine Access Road
- Crane Path
- Electrical Line
- Railroad
- Interstate Highway
- U.S. Highway
- State Highway
- Project Boundary



Base Map: World Topographic Map
 Sources: Esri, HERE, Garmin, Intermap, increment P Corp., GEBCO, USGS, FAO, NPS, NRCAN, GeoBase, IGN, Kadaster NL, Ordnance Survey, Esri Japan, METI, Esri China (Hong Kong), swisstopo, © OpenStreetMap contributors, and the GIS User Community
 Codington and Grant Counties, South Dakota
 Projection: NAD 1983 UTM Zone 14N

Page 000001

SWCA
ENVIRONMENTAL CONSULTANTS

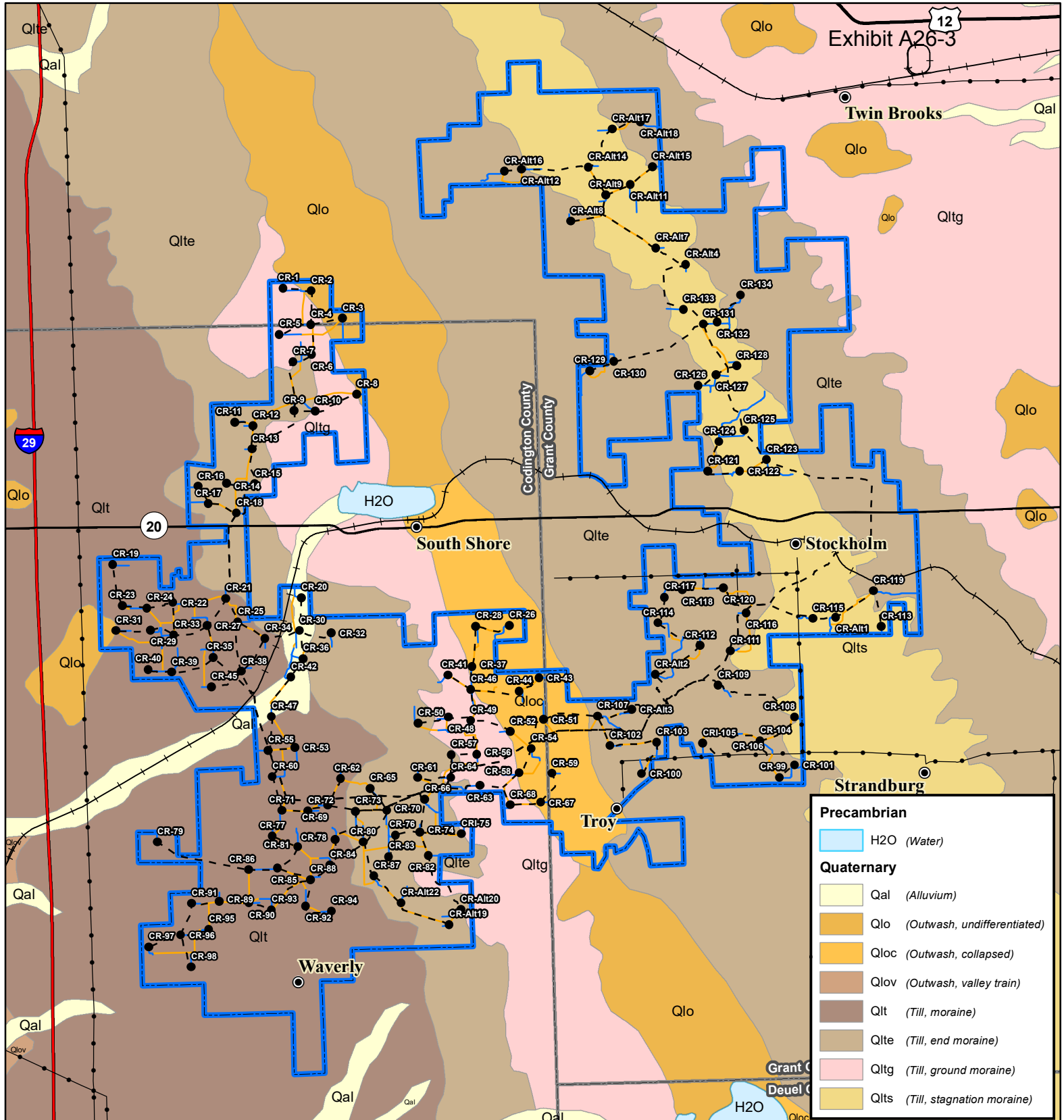
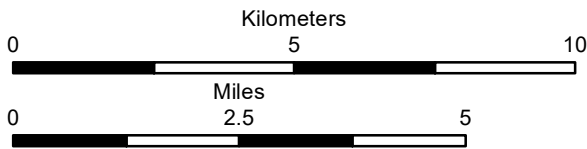


Figure 9a. Surficial Geology

Crowned Ridge Wind Farm

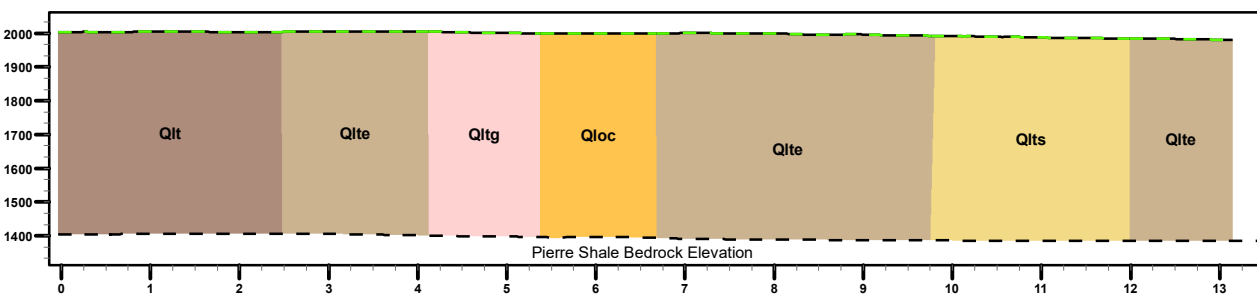
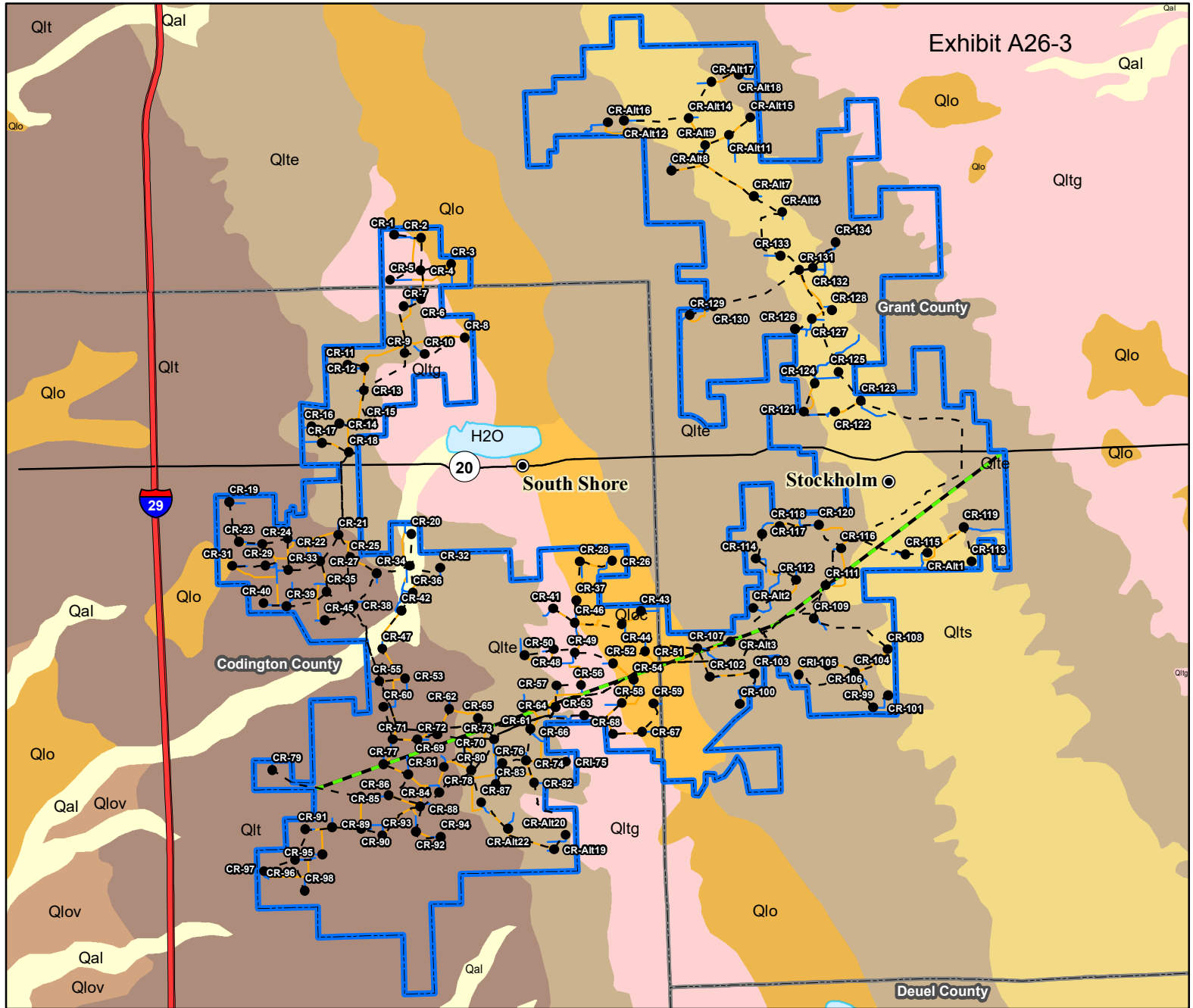
- City
- Turbine
- - - Collector Line
- Proposed Turbine Access Road
- Crane Path
- Electrical Line
- +— Railroad
- Interstate Highway
- U.S. Highway
- State Highway
- ▭ Project Boundary
- ▭ County Boundary



Base Map: Surficial Geology
 Source: South Dakota Geological Survey via State of South Dakota GIS
 Codington and Grant Counties, South Dakota

Projection: NAD 1983 UTM Zone 14N





*Vertical axis in feet above sea level; Horizontal axis in miles

Figure 9b. Geology Cross Sections

Crowned Ridge Wind Farm

- City
- Turbine
- - - Collector Line
- Proposed Turbine Access Road
- Crane Path
- Cross Section
- Interstate Highway
- State Highway

- Project Boundary
- County Boundary

Surficial Geology

- H2O (Water)
- Qal (Alluvium)

Precambrian

- Qlo (Outwash, undifferentiated)
- Qloc (Outwash, collapsed)
- Qlov (Outwash, valley train)
- Qlt (Till, moraine)
- Qlte (Till, end moraine)
- Qltg (Till, ground moraine)
- Qlts (Till, stagnation moraine)

Kilometers

0 5 10

Miles

0 2.5 5

Base Map: Surficial Geology
 Source: South Dakota Geological Survey via State of South Dakota GIS
 Codington and Grant Counties, South Dakota

Twin Brooks

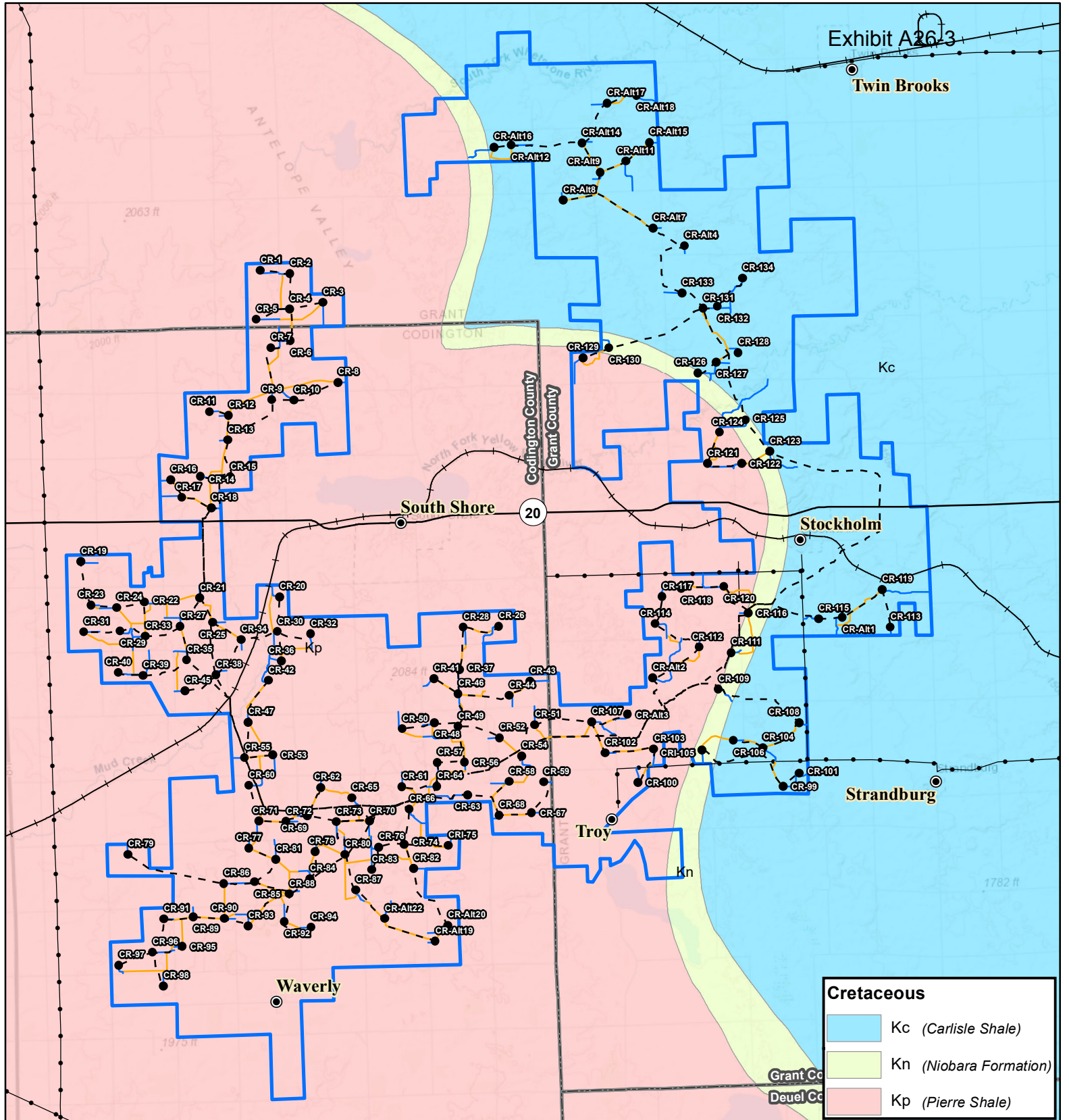
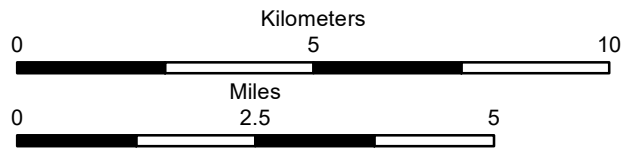


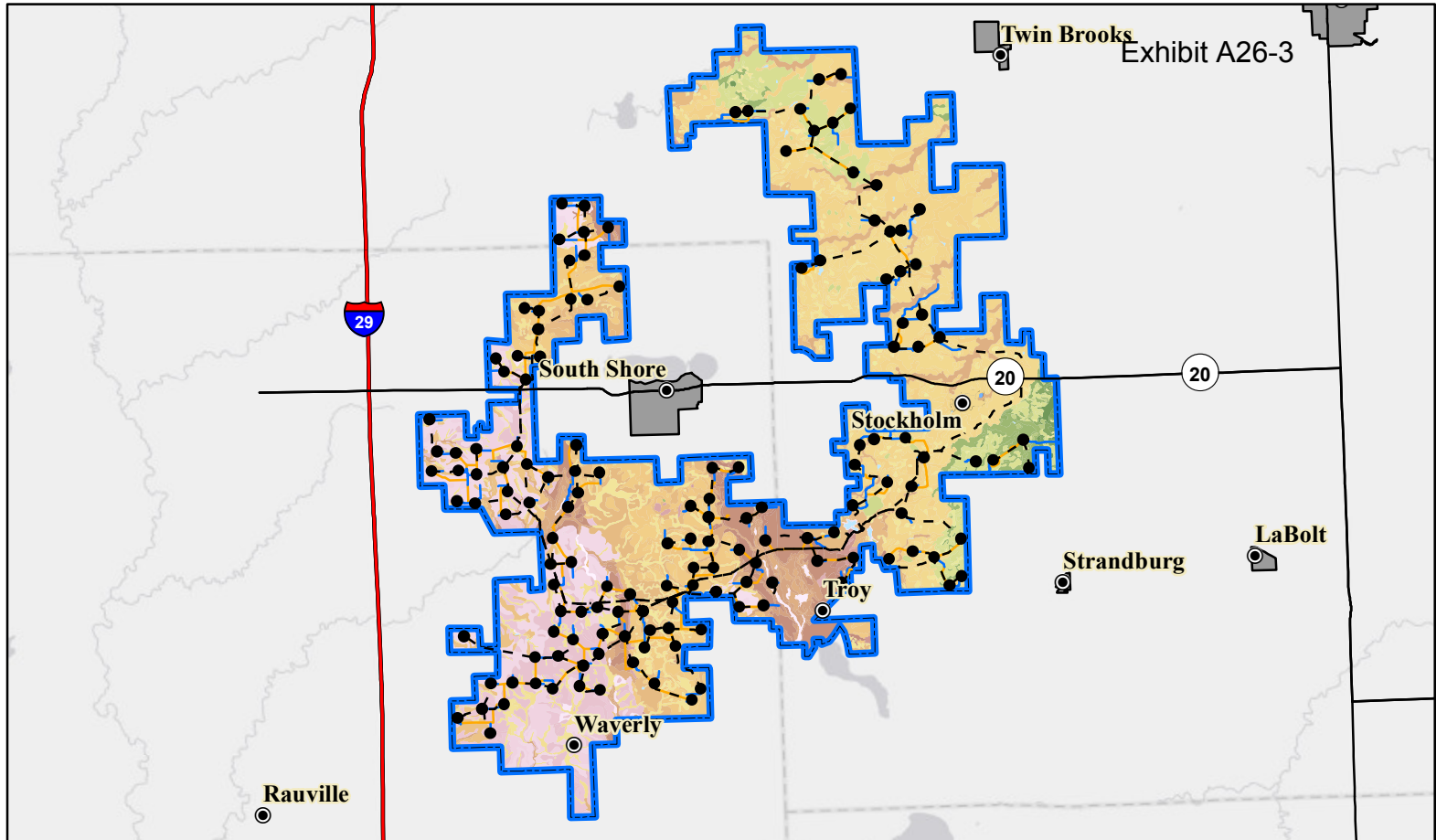
Figure 10. Bedrock Geology

Crowned Ridge Wind Farm

- City
- Turbine
- - - Collector Line
- Proposed Turbine Access Road
- Crane Path
- +— Railroad
- Electrical Line
- State Highway
- Project Boundary
- County Boundary



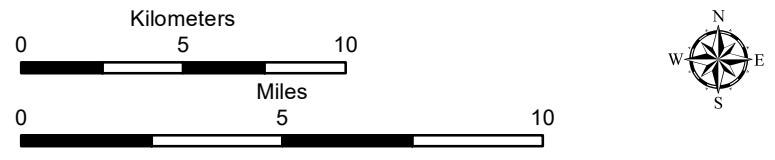
Base Map: World Topographic Map
 Sources: Esri, HERE, Garmin, Intermap, increment P Corp., GEBCO, USGS, FAO, NPS, NRCAN, GeoBase, IGN, Kadaster NL, Ordnance Survey, Esri Japan, METI, Esri China (Hong Kong), swisstopo, © OpenStreetMap contributors, and the GIS User Community
 Codington and Grant Counties, South Dakota



MUSYM (Soil Type)	
BeF (Buse-Forman loams, 25-40% slopes)	PeB (Peever clay loam, 2 to 6% slopes)
BfD (Buse-Forman-Aastad loams, 4-15% slopes)	Ph (Playmoor silty clay loam)
Fa (Flom Clay loam)	Ta (Tonka silty clay loam, 0 to 1% slopes)
FdB (Forman-Aastad loams, 1-6% slopes)	Vb (Vallers-Parnell complex)
FdC (Forman-Aastad loams, 3-9% slopes)	W (Water)
FdD (Forman-Aastad loams, 4-15% slopes)	Z101A (Tonka silty clay loam, 0 to 1% slopes)
FgC (Forman-Buse loams, 6-9% slopes)	Z102A (Badger-Tonka silty clay loam, 0 to 1% slopes)
FgE (Forman-Buse loams, 15-25% slopes)	Z105A (Oltham silty clay loam, coteau, 0 to 1% slopes)
FhE (Forman-Buse extremely stony loams, 9-40% slopes)	Z106A (Southam silty clay loam, 0 to 1% slopes)
HaD (Hattie clay loam, 9 to 15% slopes)	Z107A (Parnell silty clay loam, coteau, 0 to 1% slopes)
HaE (Hattie clay loam, 15 to 40% slopes)	Z110A (Vallers loam, coteau, 0 to 1% slopes)
J119E (Buse-Sioux complex, 9 to 40% slopes)	Z112A (Vallers-Hamerly loams, coteau, 0 to 2% slopes)
J136A (Great Bend-Beotia silt loams, 0 to 2% slopes)	Z113A (Vallers-Parnell complex, coteau, 0 to 2% slopes)
J225B (Forman-Aastad complex)	Z114A (Hamerly-Tonka complex, coteau, 0 to 2% slopes)
Lb (LaDelle silt loam, channeled)	Z115A (Hamerly-Badger complex, coteau, 0 to 2% slopes)
Lc (Ludden silty clay)	Z116A (McKranz-Hidwood, frequently flooded, silty clay loams, 0 to 2% slopes)
M-W (Miscellaneous Water)	Z117A (McKranz-Badger silty clay loams, 0 to 2% slopes)
Pa (Parnell silty clay loam)	Z119A (Hamerly-Balaton loams, coteau, 0 to 3% slopes)
Pb (Southam silty clay loam, 0 to 1% slopes)	Z128B (Hettland silty clay loam, 2 to 6% slopes)
PcA (Peever clay loam, coteau, 0 to 2% slopes)	Z131A (Forman-Aastad loams, coteau, 0 to 2% slopes)
PcB (Peever clay loam, coteau, 2 to 6% slopes)	Z131B (Forman-Aastad loams, coteau, 1 to 6% slopes)
PcC (Peever clay loam, 6 to 9% slopes)	Z132B (Forman-Buse-Aastad loams, coteau, 0 to 6% slopes)
	Z132C (Forman-Buse-Aastad loams, coteau, 2 to 9% slopes)
	Z132D (Forman-Buse-Aastad loams, coteau, 2 to 15% slopes)
	Z135D (Forman-Buse loams, very stony, 2 to 15% slopes)
	Z136F (Buse-Langhei complex, very stony, 9 to 40% slopes)
	Z137F (Buse-Forman loams, very stony, 15 to 40% slopes)
	Z140F (Buse-Langhei complex, coteau, 15 to 40% slopes)
	Z141A (Barnes-Svea loams, coteau, 0 to 2% slopes)
	Z141B (Barnes-Svea loams, coteau, 1 to 6% slopes)
	Z142B (Barnes-Buse-Svea loams, coteau, 1 to 6% slopes)
	Z142C (Barnes-Buse-Svea loams, coteau, 6 to 9% slopes)
	Z143C (Barnes-Buse loams, coteau, 6 to 9% slopes)
	Z144E (Buse-Barnes loams, coteau, 9 to 20% slopes)
	Z145D (Buse-Barnes loams, coteau, very stony, 2 to 15% slopes)
	Z145F (Buse-Barnes loams, coteau, very stony, 9 to 40% slopes)
	Z146F (Buse-Lamoure, channeled, frequently flooded, complex, 0 to 40% slopes)
	Z148F (Buse very stony-Lamoure, channeled, frequently flooded, complex, 0 to 40% slopes)
	Z149F (Buse-Langhei, very stony-La Prairie, channeled, occasionally flooded, complex, 0 to 60% slopes)
	Z150A (Rauville silty clay loam, coteau, frequently flooded, 0 to 1% slopes)
	Z152A (Lamoure silty clay loam, coteau, occasionally flooded, 0 to 1% slopes)
	Z153A (Lamoure-Rauville silty clay loams, channeled, frequently flooded, 0 to 2% slopes)
	Z157A (Fairdale loam, channeled, frequently flooded, 0 to 2% slopes)
	Z158A (Marysland loam, occasionally flooded, 0 to 1% slopes)
	Z159A (Divide loam, occasionally flooded, 0 to 2% slopes)
	Z160A (Moritz, occasionally flooded-Lamoure, frequently flooded, complex, 0 to 2% slopes)
	Z161A (Spottswood loam, occasionally flooded, 0 to 2% slopes)
	Z162A (La Prairie loam, coteau, occasionally flooded, 0 to 2% slopes)
	Z166A (Fordtown loam, rarely flooded, 0 to 2% slopes)
	Z167A (Renwash loam, rarely flooded, 0 to 2% slopes)
	Z171A (Renshaw-Fordville loams, coteau, 0 to 2% slopes)
	Z171B (Renshaw-Fordville loams, coteau, 2 to 6% slopes)
	Z172A (Renshaw loam, coteau, 0 to 2% slopes)
	Z172B (Renshaw loam, coteau, 2 to 6% slopes)
	Z173B (Renshaw-Sioux complex, coteau, 2 to 6% slopes)
	Z173C (Renshaw-Sioux complex, coteau, 6 to 9% slopes)
	Z174D (Sioux-Renshaw complex, coteau, 9 to 15% slopes)
	Z174F (Sioux-Renshaw complex, coteau, 15 to 40% slopes)
	Z175D (Renshaw-Sioux complex, very stony, 2 to 15% slopes)
	Z176C (Arvilla-Sandberg sandy loams, coteau, 6 to 9% slopes)
	Z177 (Udortheims, coteau (gravel pits))
	Z178A (Rentll loam, coteau, 0 to 2% slopes)
	Z179F (Sioux-Renshaw complex, very stony, 15 to 40% slopes)
	Z184E (Maddock loamy fine sand, 9 to 25% slopes)
	Z185A (Egeland-Embsden complex, coteau, 0 to 2% slopes)
	Z185B (Egeland-Embsden complex, coteau, 2 to 6% slopes)
	Z186B (Maddock-Egeland sandy loams, coteau, 2 to 6% slopes)
	Z186C (Maddock-Egeland sandy loams, coteau, 6 to 9% slopes)
	Z190A (Brookings silty clay loam, 0 to 2% slopes)
	Z192A (Vienna-Brookings complex, coteau, 0 to 2% slopes)
	Z192B (Vienna-Brookings complex, coteau, 1 to 6% slopes)
	Z193C (Vienna-Buse complex, coteau, 6 to 9% slopes)
	Z194A (Barnes clay loam, coteau, 0 to 2% slopes)
	Z194B (Barnes clay loam, coteau, 2 to 6% slopes)
	Z198A (Vienna-Forestville loams, coteau, 0 to 2% slopes)
	Z199B (Vienna-Forestville loams, 1 to 6% slopes)
	Z205B (Mauvais clay loam, occasionally ponded, extremely stony, 2 to 6% slopes)
	Z217A (McKranz silty clay loam, 0 to 2% slopes)
	Z250A (Rauville mucky silty clay loam, ponded, frequently flooded, 0 to 1% slopes)
	Z252A (Hidewood silty clay loam, frequently flooded, 0 to 2% slopes)

Figure 11. Soil Types

- Crowned Ridge Wind Farm
- City
 - Turbine
 - - - Collector Line
 - Proposed Turbine Access Road
 - Crane Path
 - Interstate Highway
 - State Highway
 - ▭ Town Boundary
 - ▭ Project Boundary



Base Map: World Light Gray Canvas Base
 Sources: Esri, HERE, Garmin, © OpenStreetMap contributors, and the GIS user community
 Codington and Grant Counties, South Dakota

Projection: NAD 1983 UTM Zone 14N

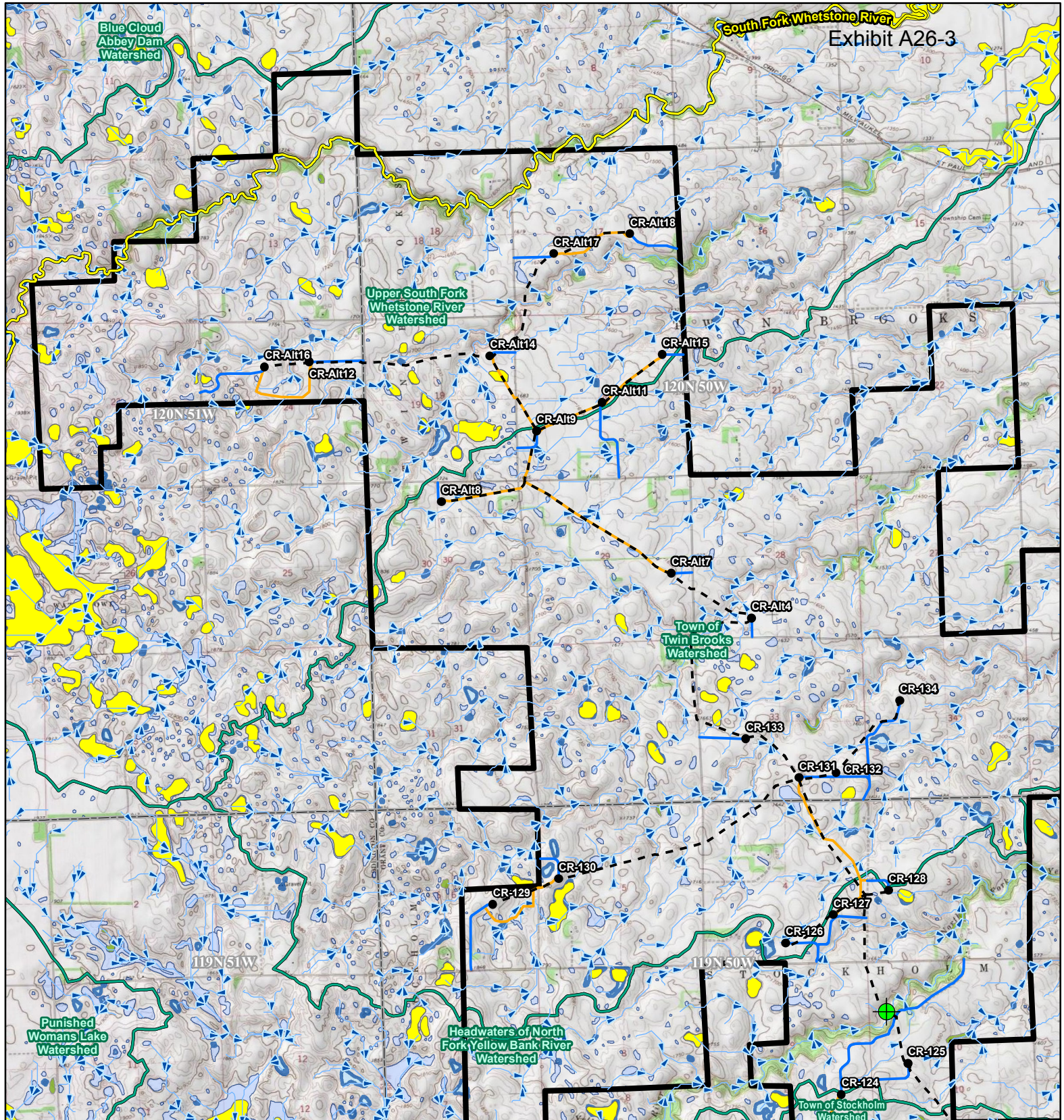
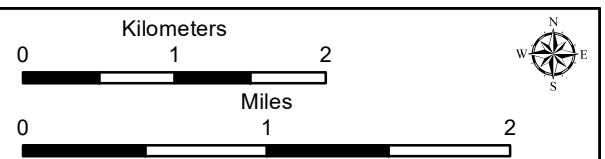
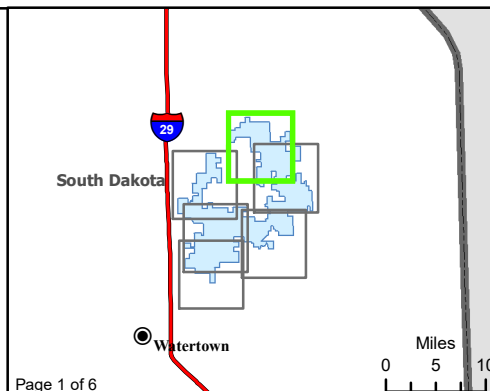


Exhibit A26-3

Figure 12. Water Resources
Crowned Ridge Wind Farm

- Intersection of Floodplain and Project Infrastructure
- CRI_PUC_TURBI... Turbine
- COLLECTION_LI... Collector Line
- ACCESS_ROAD... Proposed Turbine Access Road
- Crane_Paths_Pro... Crane Path
- City
- Flow Direction
- South Dakota Beneficial Use Stream



Base Map: USGS 7.5' Topographic Map
 Source: Esri ArcGIS Online service
 Quadrangle: Antelope Valley (1973),
 Twin Brooks (1973), Stockholm (1973)
 Township/Range: T120N, R51W &
 T120N, R50W & T119N, R50W
 Grant County, South Dakota
 Page 000006
 Projection: NAD 1983 UTM Zone 14N

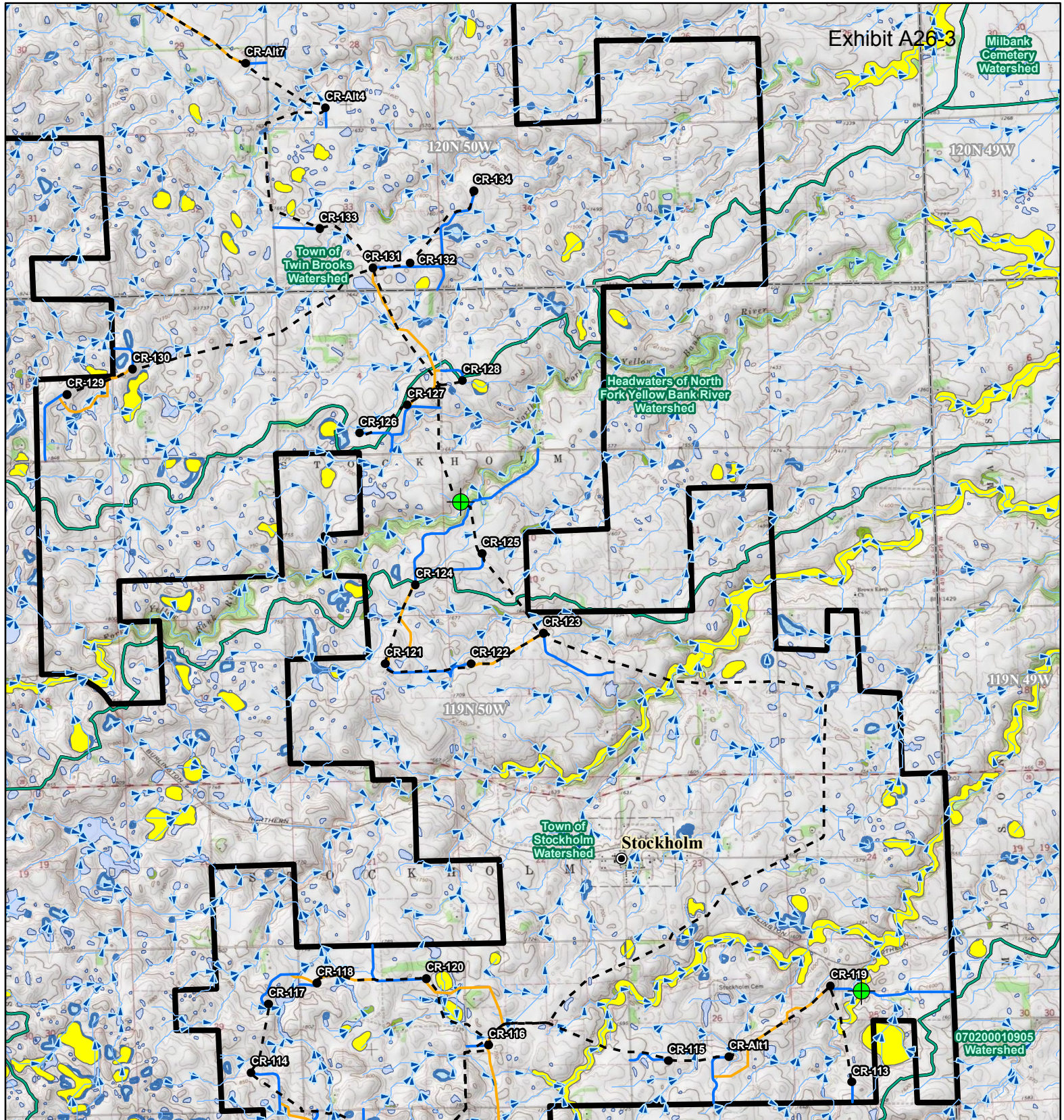
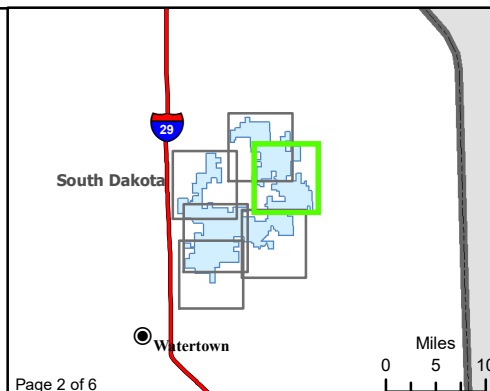


Exhibit A26-3

Figure 12. Water Resources
Crowned Ridge Wind Farm

- Intersection of Floodplain and Project Infrastructure
- CRI_PUC_TURBI... Turbine
- COLLECTION_LI... Collector Line
- ACCESS_ROAD... Proposed Turbine Access Road
- Crane_Paths_Pro... Crane Path
- City
- Flow Direction
- South Dakota Beneficial Use Stream



Kilometers
0 1 2

Miles
0 1 2

Base Map: USGS 7.5' Topographic Map
Source: Esri ArcGIS Online service
Quadrangle: Twin Brooks (1973),
Stockholm (1973)
Township/Range: T120N, R50W &
T119N, R50W
Grant County, South Dakota

Page 000007

Projection: NAD 1983 UTM Zone 14N

SWCA
ENVIRONMENTAL CONSULTANTS

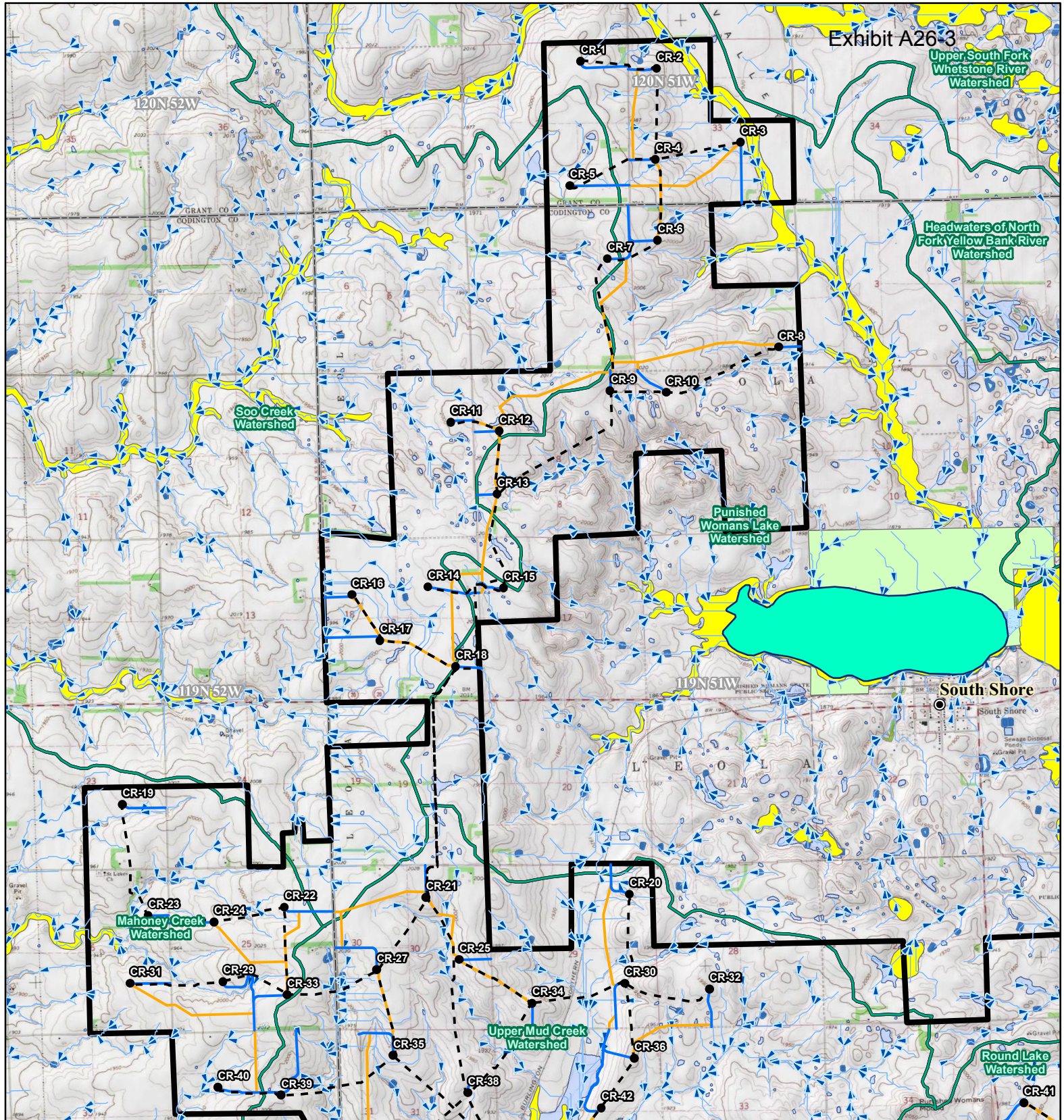
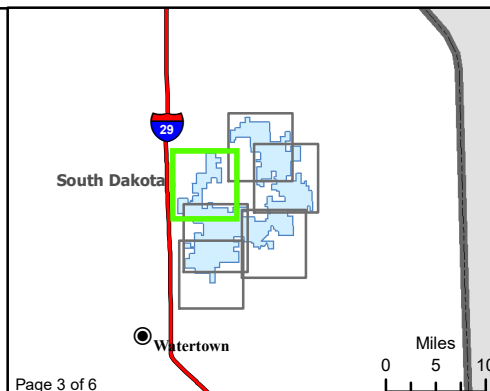


Exhibit A26-3

Figure 12. Water Resources
Crowned Ridge Wind Farm

- Intersection of Floodplain and Project Infrastructure
- CRI_PUC_TURBI... Turbine
- COLLECTION_LI... Collector Line
- ACCESS_ROAD... Proposed Turbine Access Road
- Crane_Paths_Pro... Crane Path
- City
- Flow Direction
- South Dakota Beneficial Use Stream



Kilometers

0 1 2

Miles

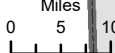
0 1 2

Base Map: USGS 7.5' Topographic Map
 Source: Esri ArcGIS Online service
 Quadrangle: Antelope Valley (1973), Still Lake SE (1970), South Shore (1973)
 Township/Range: T120N, R51W & T119N, R52W & T119N, R51W
 Codrington and Grant Counties, South Dakota

Page 000008

SWCA
ENVIRONMENTAL CONSULTANTS

Projection: NAD 1983 UTM Zone 14N



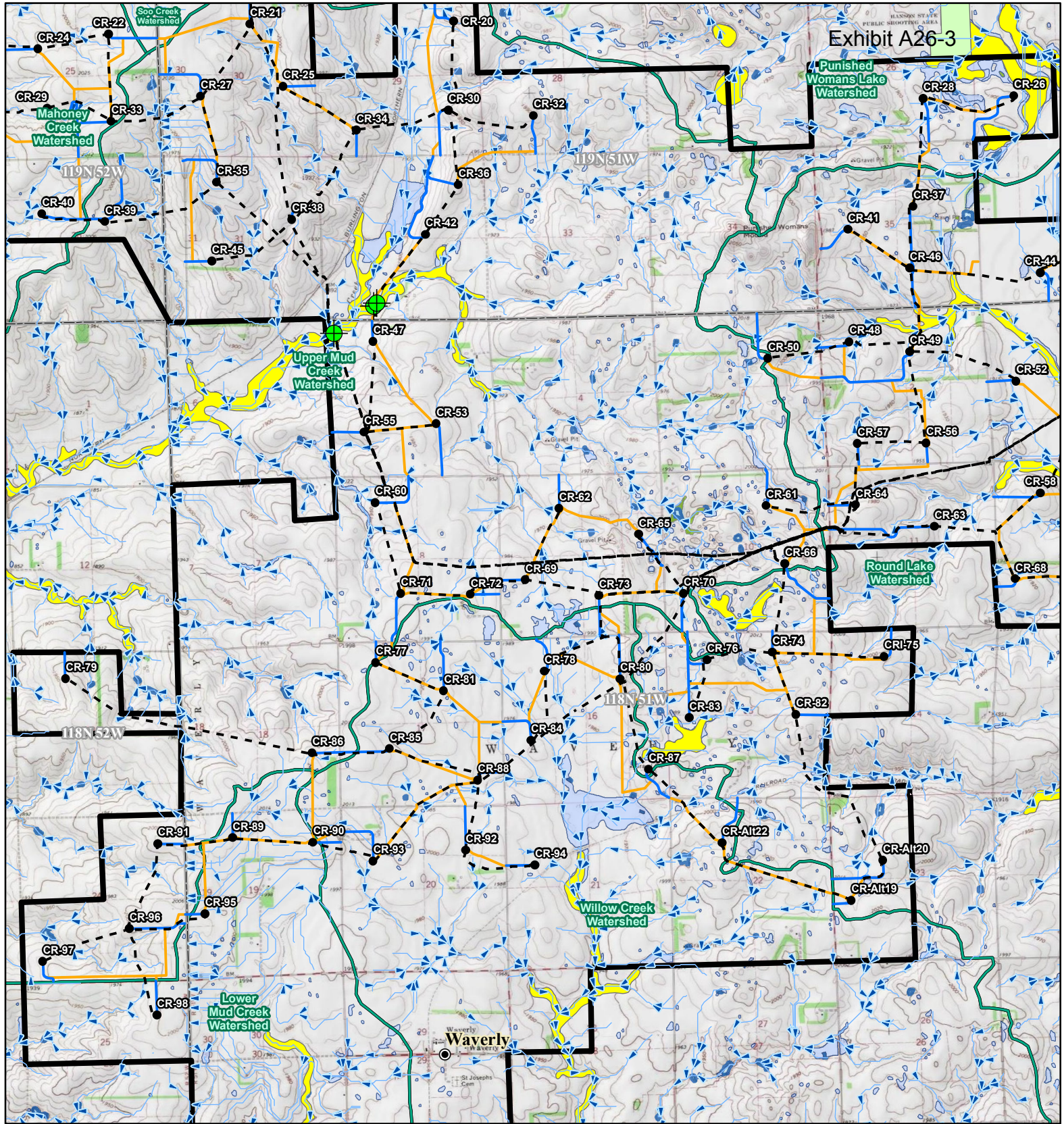
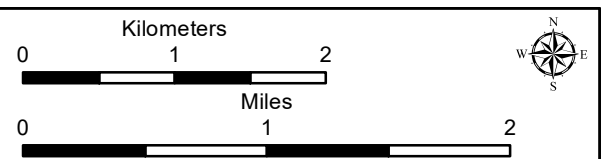
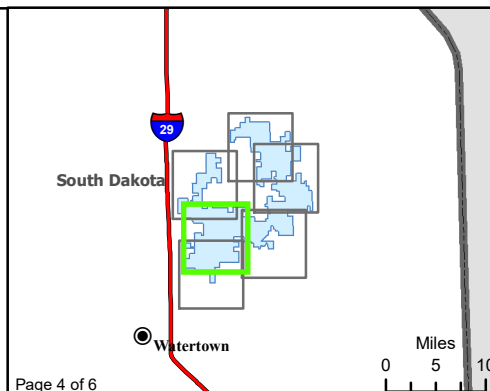


Exhibit A26-3

Figure 12. Water Resources
Crowned Ridge Wind Farm

- Intersection of Floodplain and Project Infrastructure
- CRI_PUC_TURBI... Turbine
- COLLECTION_LI... Collector Line
- ACCESS_ROAD... Proposed Turbine Access Road
- Crane_Paths_Pro... Crane Path
- City
- Flow Direction
- South Dakota Beneficial Use Stream



Base Map: USGS 7.5' Topographic Map
 Source: Esri ArcGIS Online service
 Quadrangle: Still Lake SE (1970), South Shore (1973),
 Watertown East (1969), Kranzburg (1970)
 Township/Range: T119N, R52W & T119N, R51W &
 T118N, R52W & T118N, R51W
 Codington County, South Dakota

Page 000009

Projection: NAD 1983 UTM Zone 14N



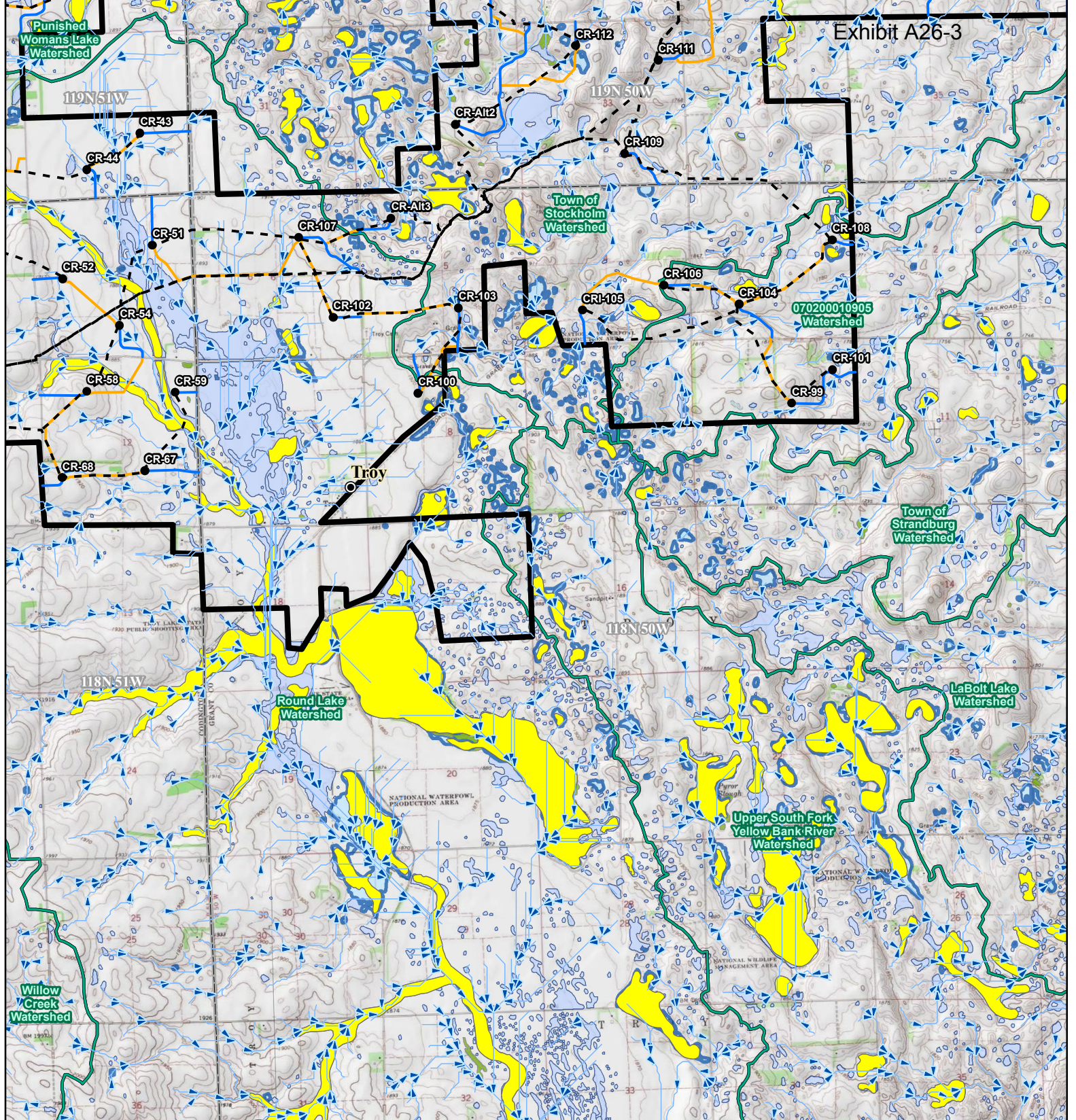
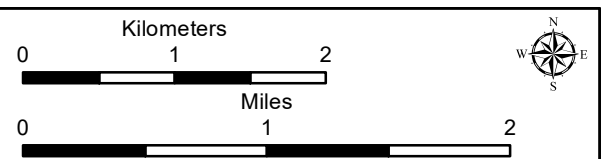
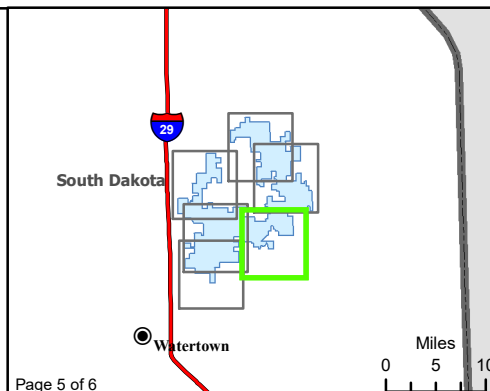


Exhibit A26-3

Figure 12. Water Resources
Crowned Ridge Wind Farm

- Intersection of Floodplain and Project Infrastructure
- CRI_PUC_TURBI... Turbine
- COLLECTION_LI... Collector Line
- ACCESS_ROAD... Proposed Turbine Access Road
- Crane_Paths_Pro... Crane Path
- City
- Flow Direction
- South Dakota Beneficial Use Stream



Base Map: USGS 7.5' Topographic Map
 Source: Esri ArcGIS Online service
 Quadrangle: South Shore (1973),
 Stockholm (1973)
 Township/Range: T119N, R51W & T119N, R50W &
 T118N, R51W & T118N, R50W
 Codington and Grant Counties, South Dakota

Page 000010

Projection: NAD 1983 UTM Zone 14N

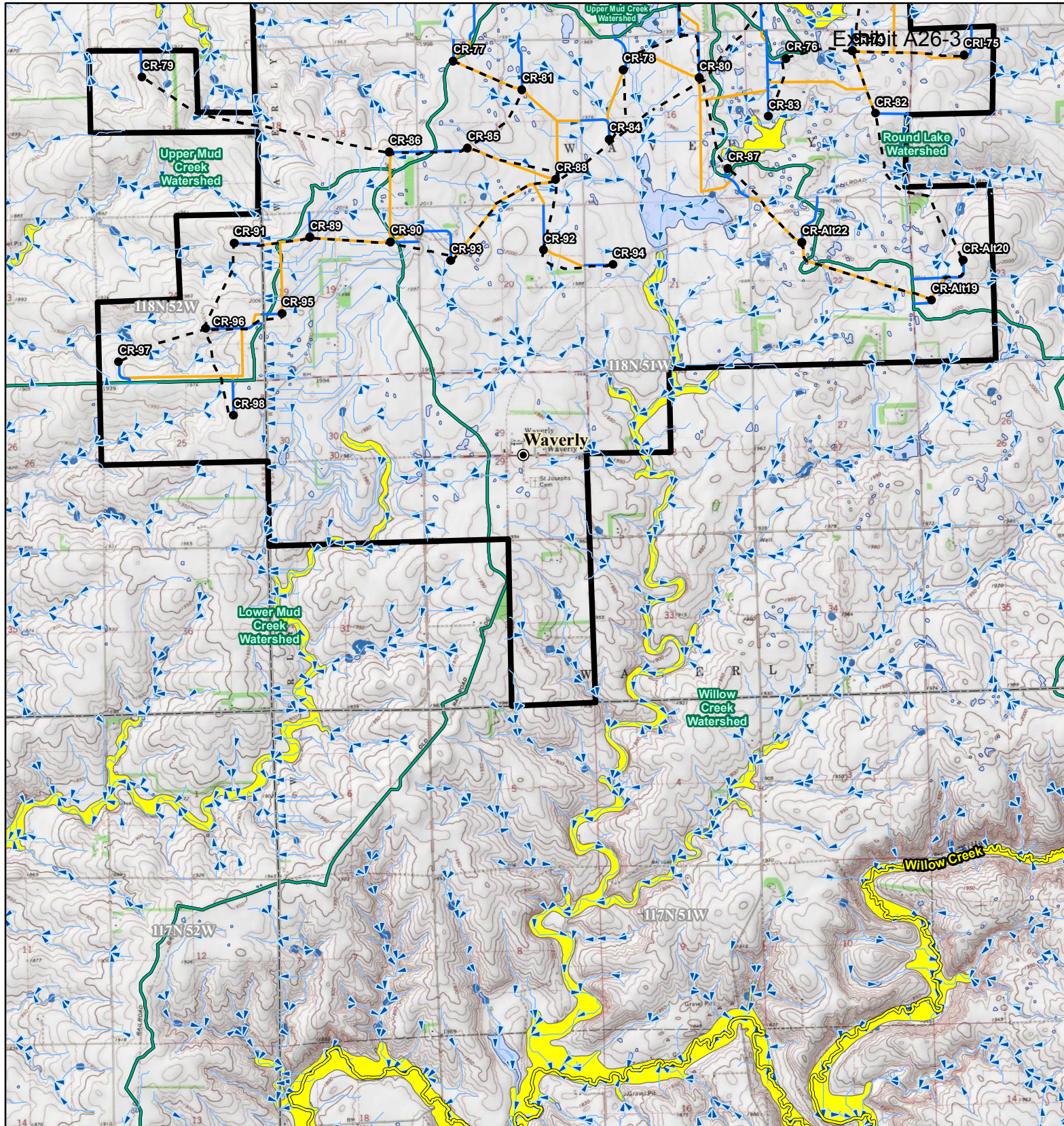








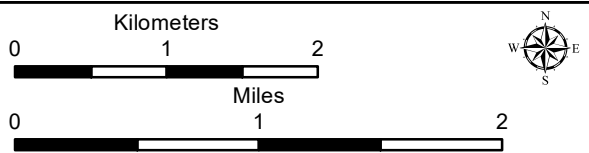
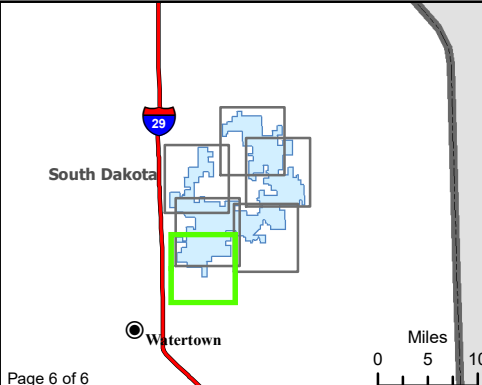


Figure 12. Water Resources
Crowned Ridge Wind Farm

-  Intersection of Floodplain and Project Infrastructure
-  CRI_PUC_TURBI... Turbine
-  COLLECTION_LI... Collector Line
-  ACCESS_ROAD... Proposed Turbine Access Road
-  Crane_Paths_Pro... Crane Path
-  City
-  Flow Direction
-  South Dakota Beneficial Use Stream



Base Map: USGS 7.5' Topographic Map
 Source: Esri ArcGIS Online service
 Quadrangle: Still Lake SE (1970), South Shore (1973),
 Watertown East (1969), Kranzburg (1970)
 Township/Range: T118N, R52W &
 T118N, R51W
 Codington County, South Dakota



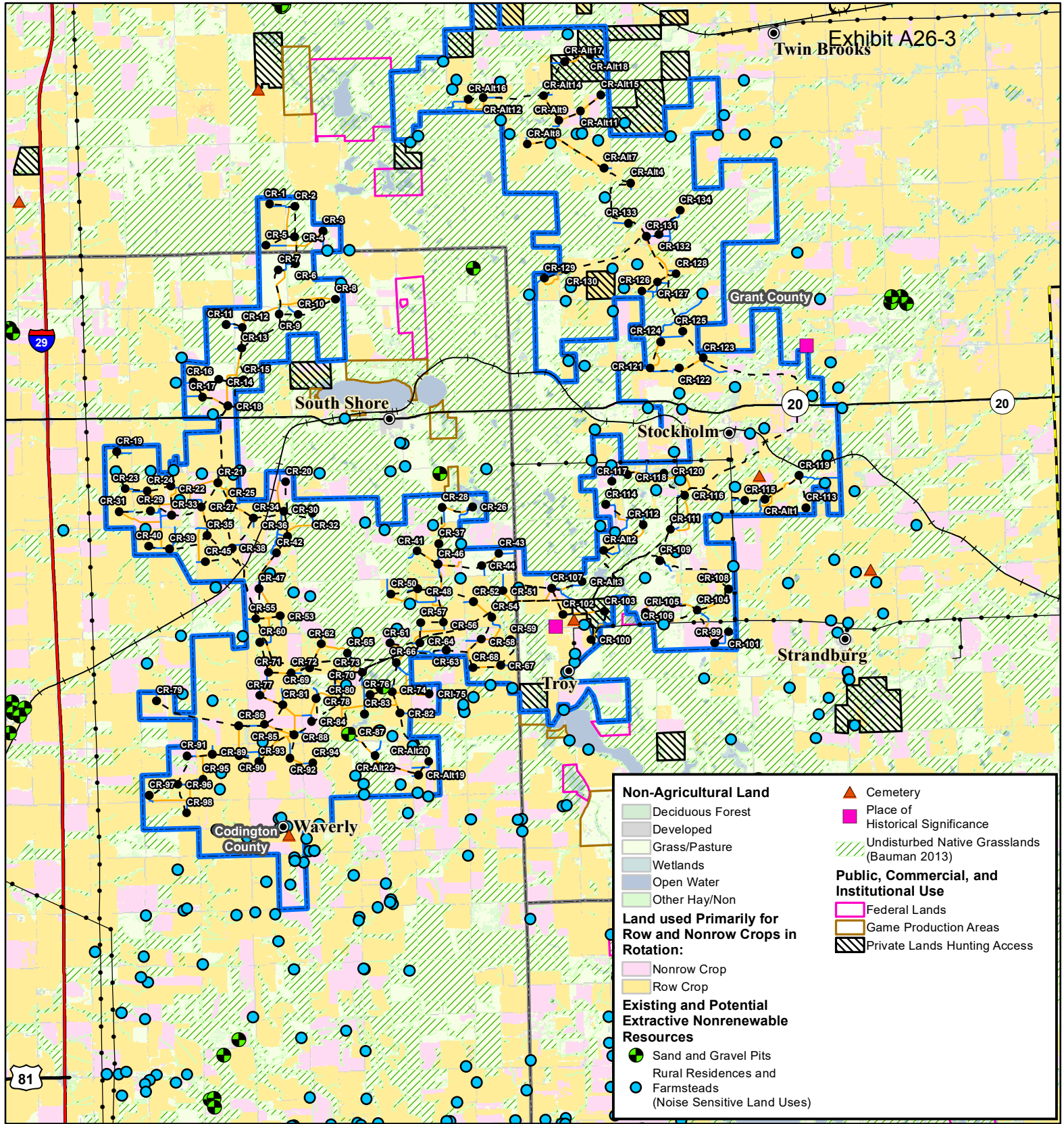
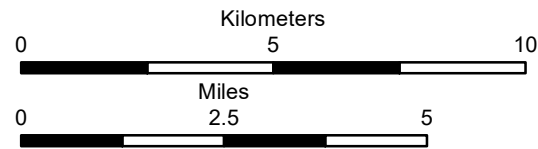


Figure 13. Land Use

Crowned Ridge II Wind Farm

- City
- Turbine
- - - Collector Line
- Proposed Turbine Access Road
- Crane Path
- Electrical Line
- Natural Gas Line
- +— Railroad
- Interstate Highway
- U.S. Highway
- State Highway
- ▭ Project Boundary
- ▭ County Boundary



Base Map: 2017 South Dakota Cropland Data Layer | NASS/USDA
 Source: United States Department of Agriculture (USDA), National Agricultural Statistics Service (NASS), Research and Development Division (RDD), Geospatial Information Branch (GIB), Spatial Analysis Research Section (SARS), 2017 edition
 Codington, Deuel, and Grant Counties, South Dakota
 Projection: NAD 1983 UTM Zone 14N