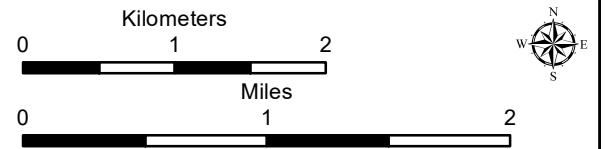
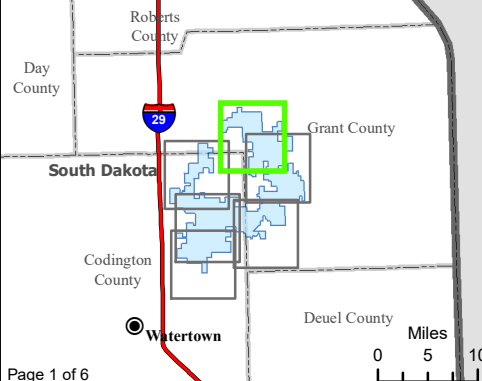


Exhibit A20-16

Figure 12. Water Resources
Crowned Ridge Wind Farm

- Intersection of Floodplain and Project Infrastructure
- City
- Flow Direction
- South Dakota Beneficial Use Stream
- South Dakota Beneficial Use Lake
- Watershed Boundary (HUC12)
- Project Boundary
- County Boundary
- FEMA Flood Zone A
- NWI Wetland Freshwater Emergent Wetland
- NWI Wetland Freshwater Forested/Shrub Wetland
- Lake, Pond, or Riverine Wetland
- Township/Range Boundary



Base Map: USGS 7.5' Topographic Map
Source: Esri ArcGIS Online service
Quadrangle: Antelope Valley (1973),
Twin Brooks (1973), Stockholm (1973)
Township/Range: T120N, R51W &
T120N, R50W & T119N, R50W
Grant County, South Dakota

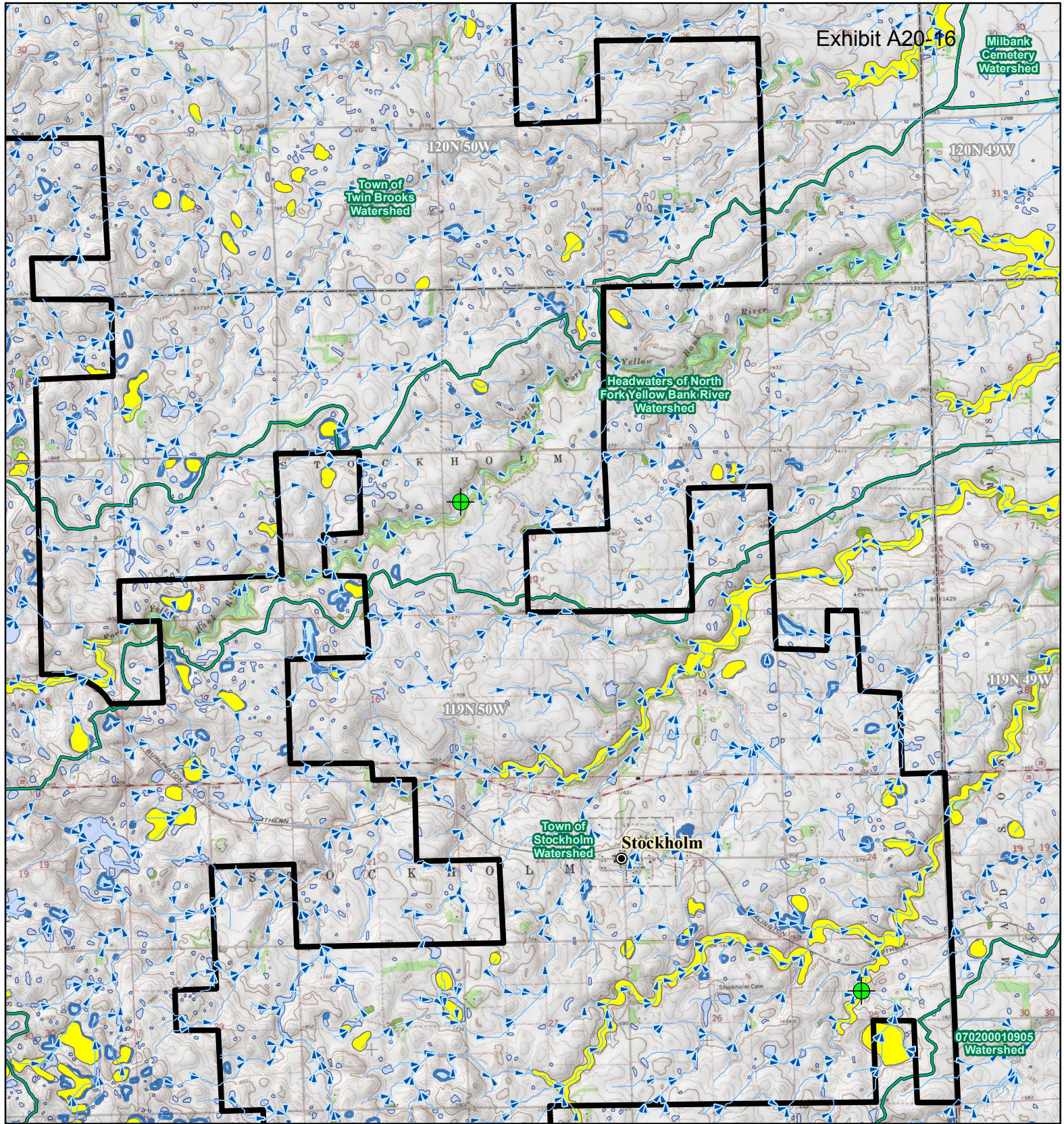
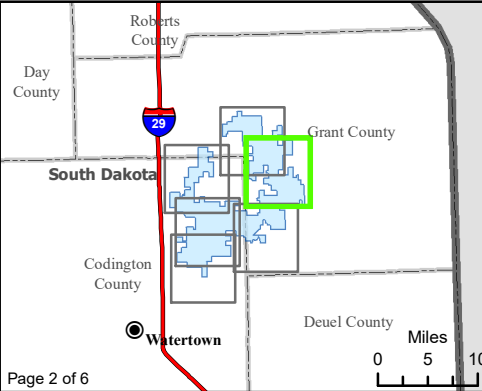


Figure 12. Water Resources
Crowned Ridge Wind Farm

- Intersection of Floodplain and Project Infrastructure
- City
- Flow Direction
- South Dakota Beneficial Use Stream
- South Dakota Beneficial Use Lake
- Watershed Boundary (HUC12)
- Project Boundary
- County Boundary
- Township/Range Boundary
- FEMA Flood Zone**
- A
- NWI Wetland**
- Freshwater Emergent Wetland
- Freshwater Forested/ Shrub Wetland
- Lake, Pond, or Riverine Wetland



Kilometers

0 1 2

Miles

0 1 2

Base Map: USGS 7.5' Topographic Map
 Source: Esri ArcGIS Online service
 Quadrangle: Twin Brooks (1973),
 Stockholm (1973)
 Township/Range: T120N, R50W &
 T119N, R50W
 Grant County, South Dakota

Page 000002 **SWCA**
 ENVIRONMENTAL CONSULTANTS

Projection: NAD 1983 UTM Zone 14N

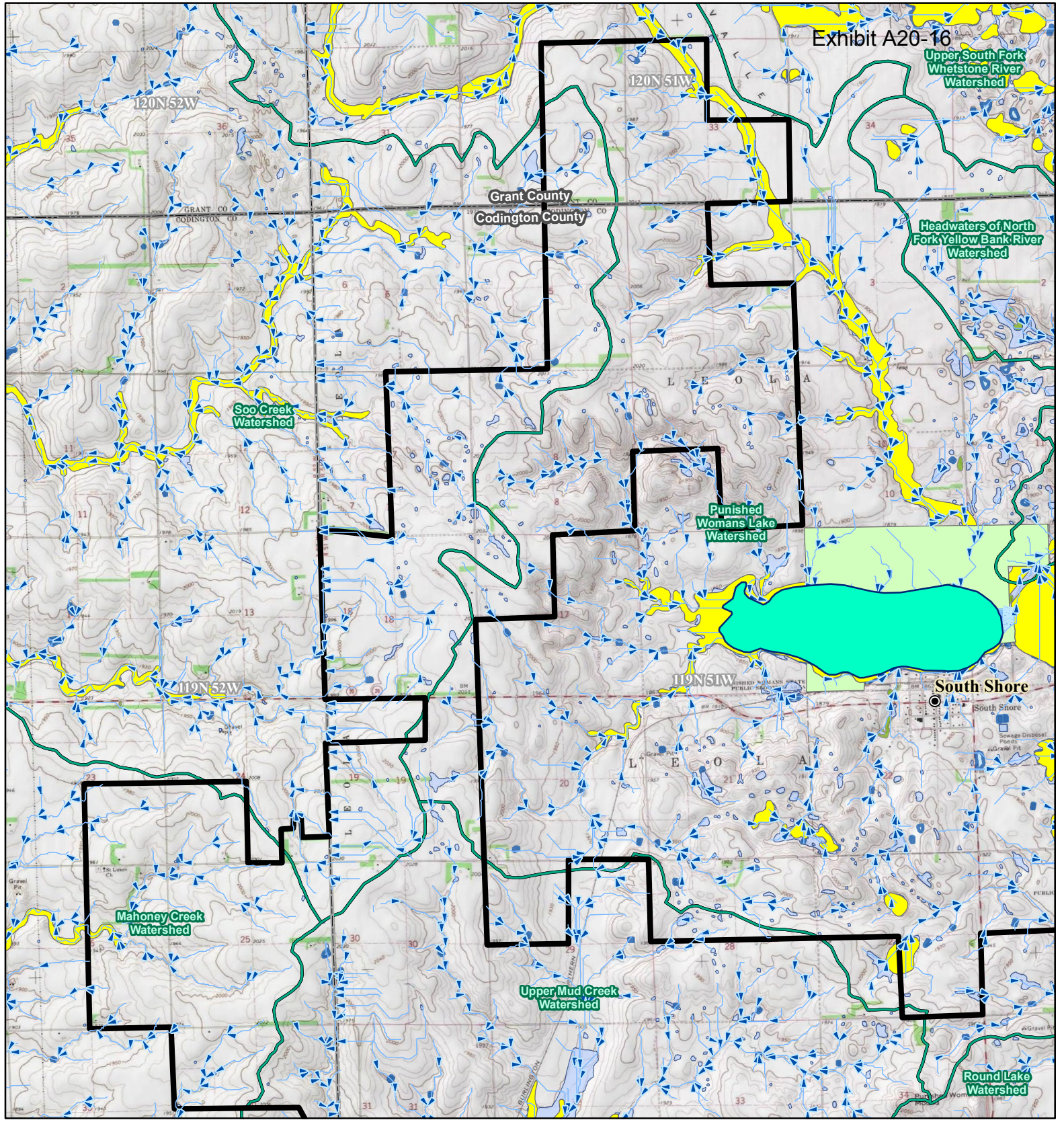
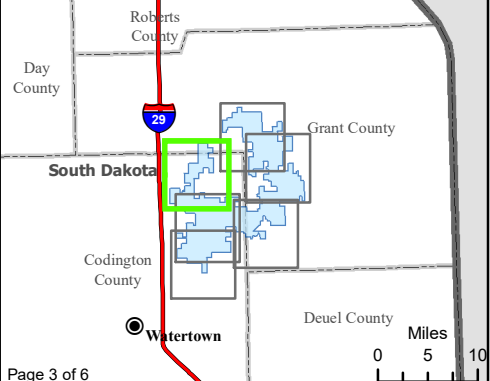


Figure 12. Water Resources
Crowned Ridge Wind Farm

- Intersection of Floodplain and Project Infrastructure
- City
- Flow Direction
- South Dakota Beneficial Use Stream
- South Dakota Beneficial Use Lake
- Watershed Boundary (HUC12)
- Project Boundary
- County Boundary
- Township/Range Boundary
- FEMA Flood Zone**
 - A
 - D
- NWI Wetland**
 - Freshwater Emergent Wetland
 - Freshwater Forested/Shrub Wetland
 - Lake, Pond, or Riverine Wetland



Kilometers
0 1 2

Miles
0 1 2

Base Map: USGS 7.5' Topographic Map
 Source: Esri ArcGIS Online service
 Quadrangle: Antelope Valley (1973), Still Lake SE (1970), South Shore (1973)
 Township/Range: T120N, R51W & T119N, R52W & T119N, R51W
 Codington and Grant Counties, South Dakota

Page 000003 **SWCA**
 ENVIRONMENTAL CONSULTANTS

Projection: NAD 1983 UTM Zone 14N

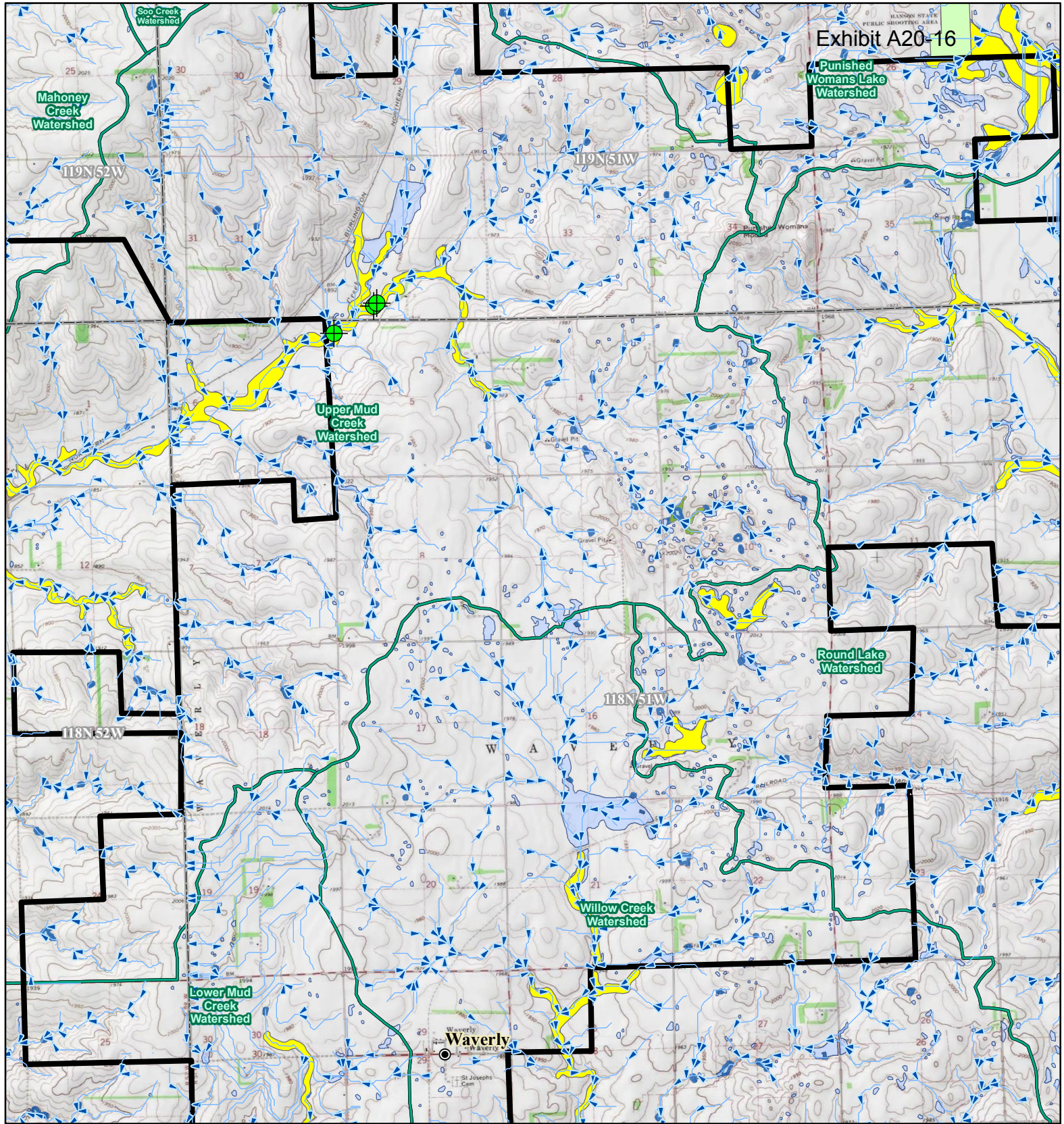
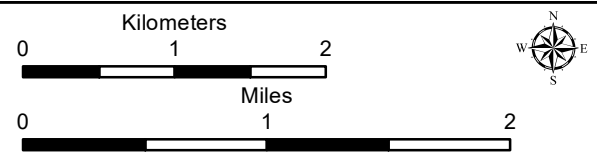
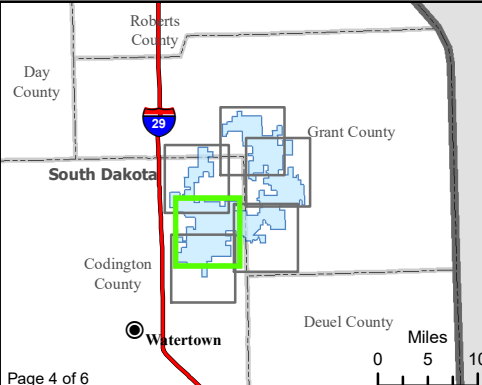


Figure 12. Water Resources
Crowned Ridge Wind Farm

- Intersection of Floodplain and Project Infrastructure
- City
- Flow Direction
- South Dakota Beneficial Use Stream
- South Dakota Beneficial Use Lake
- Watershed Boundary (HUC12)
- Project Boundary
- County Boundary
- Township/Range Boundary
- FEMA Flood Zone**
 - A
 - D
- NWI Wetland**
 - Freshwater Emergent Wetland
 - Freshwater Forested/Shrub Wetland
 - Lake, Pond, or Riverine Wetland



Base Map: USGS 7.5' Topographic Map
 Source: Esri ArcGIS Online service
 Quadrangle: Still Lake SE (1970), South Shore (1973),
 Watertown East (1969), Kranzburg (1970)
 Township/Range: T119N, R52W & T119N, R51W &
 T118N, R52W & T118N, R51W
 Codington County, South Dakota
 Page 000004 **SWCA**
 ENVIRONMENTAL CONSULTANTS
 Projection: NAD 1983 UTM Zone 14N

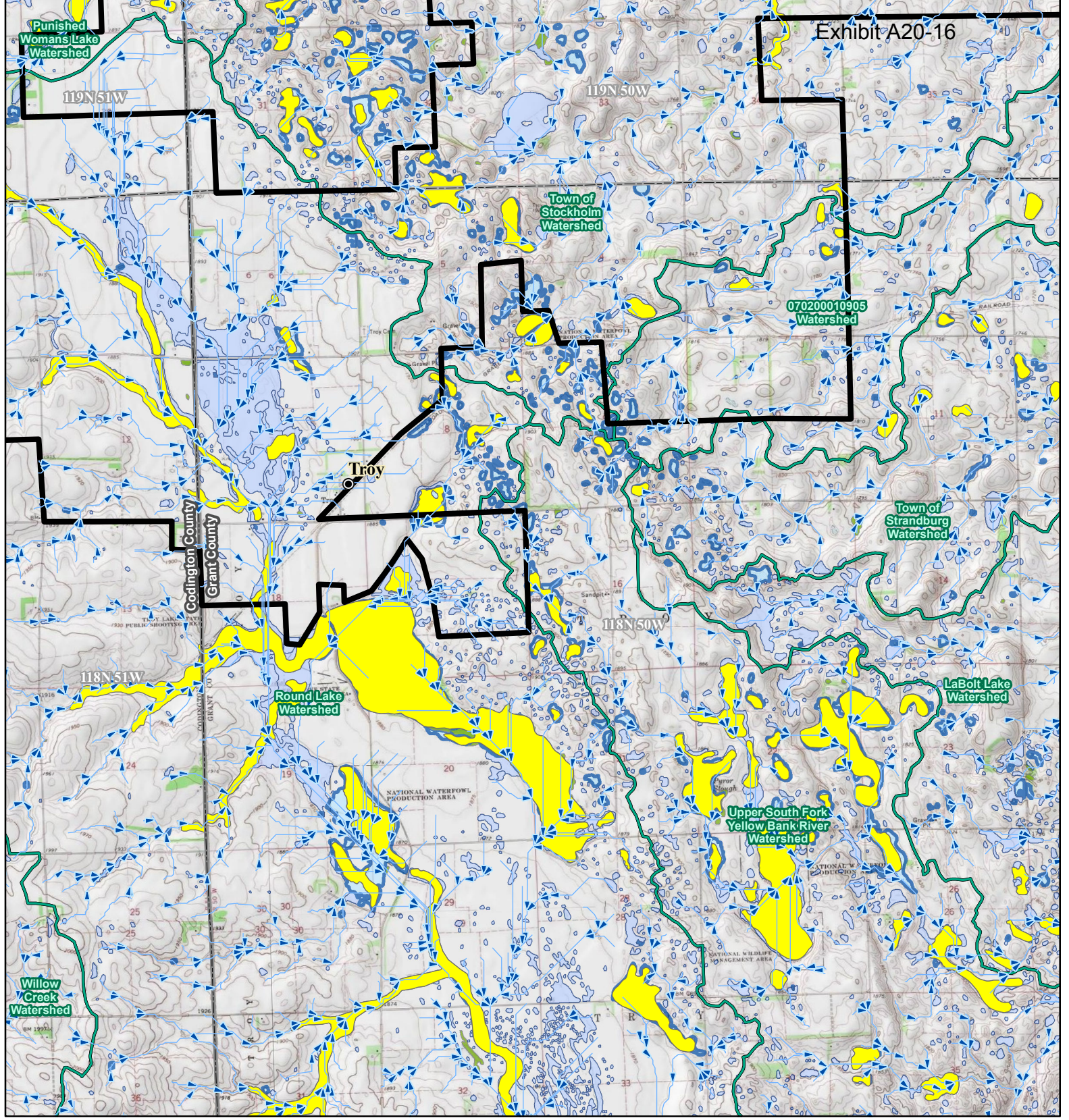
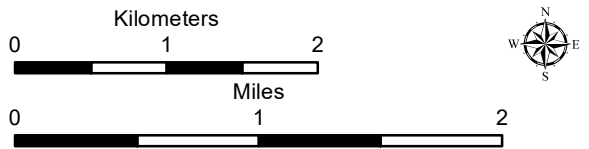
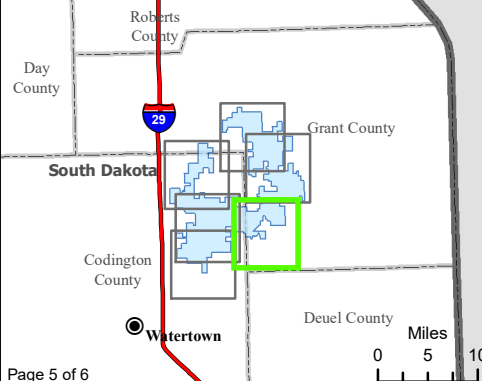


Exhibit A20-16

Figure 12. Water Resources
Crowned Ridge Wind Farm

- Intersection of Floodplain and Project Infrastructure
- City
- Flow Direction
- South Dakota Beneficial Use Stream
- South Dakota Beneficial Use Lake
- Watershed Boundary (HUC12)
- Project Boundary
- County Boundary
- Township/Range Boundary
- FEMA Flood Zone**
- A
- NWI Wetland**
- Freshwater Emergent Wetland
- Freshwater Forested/ Shrub Wetland
- Lake, Pond, or Riverine Wetland



Base Map: USGS 7.5' Topographic Map
 Source: Esri ArcGIS Online service
 Quadrangle: South Shore (1973), Stockholm (1973)
 Township/Range: T119N, R51W & T119N, R50W & T118N, R51W & T118N, R50W
 Codington and Grant Counties, South Dakota
 Page 000005 **SWCA**
 ENVIRONMENTAL CONSULTANTS
 Projection: NAD 1983 UTM Zone 14N

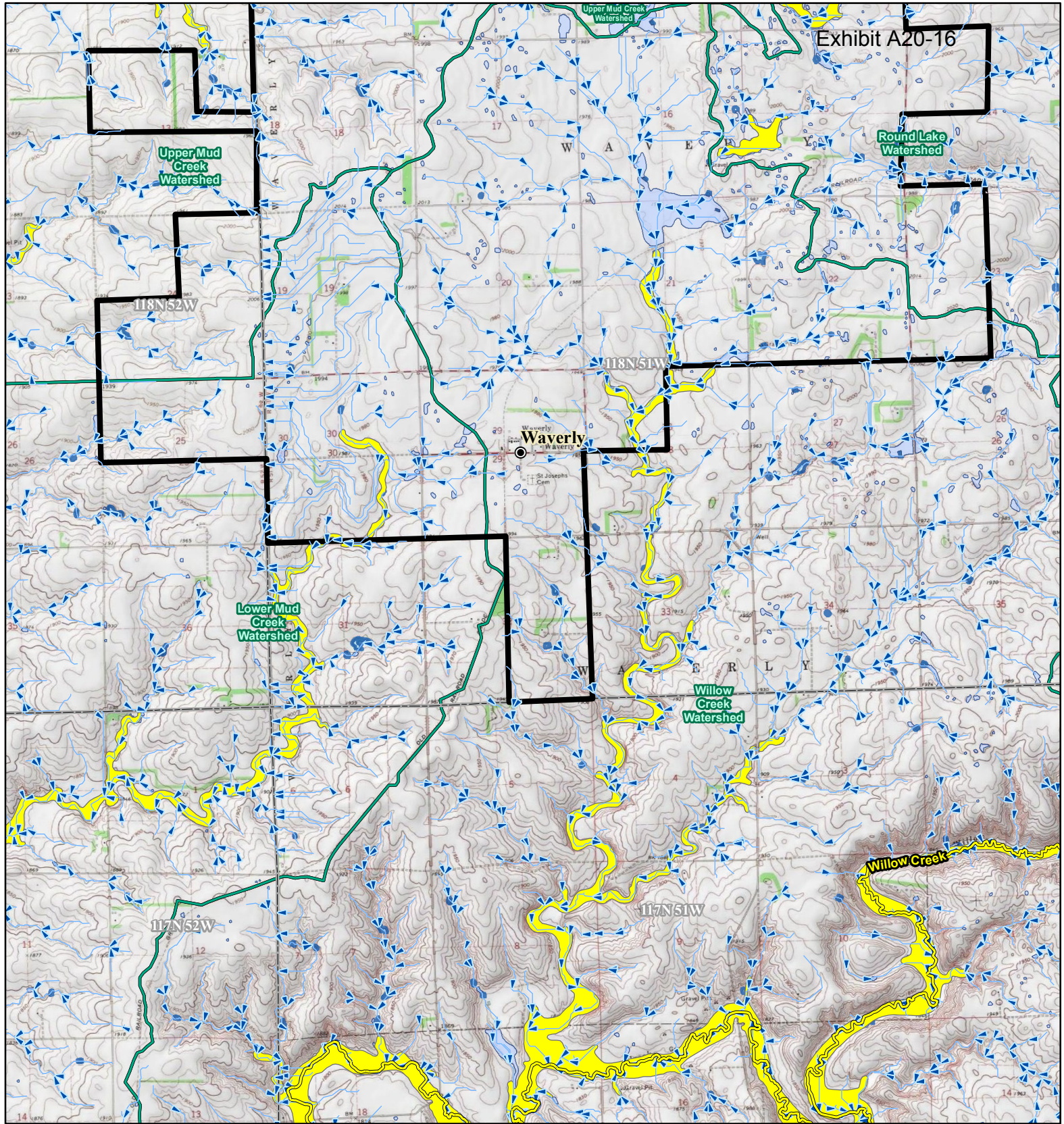


Exhibit A20-16

Upper Mud Creek Watershed

Round Lake Watershed

Waverly

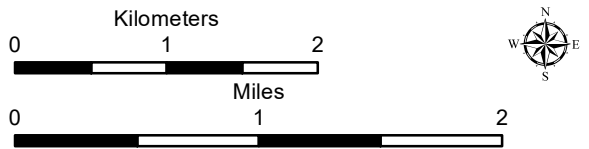
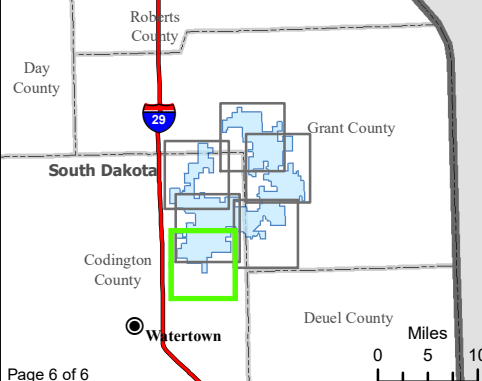
Lower Mud Creek Watershed

Willow Creek Watershed

Willow Creek

Figure 12. Water Resources
Crowned Ridge Wind Farm

- Intersection of Floodplain and Project Infrastructure
- City
- Flow Direction
- South Dakota Beneficial Use Stream
- South Dakota Beneficial Use Lake
- Watershed Boundary (HUC12)
- Project Boundary
- County Boundary
- Township/Range Boundary
- FEMA Flood Zone**
- A
- NWI Wetland**
- Freshwater Emergent Wetland
- Freshwater Forested/Shrub Wetland
- Lake, Pond, or Riverine Wetland



Base Map: USGS 7.5' Topographic Map
 Source: Esri ArcGIS Online service
 Quadrangle: Still Lake SE (1970), South Shore (1973), Watertown East (1969), Kranzburg (1970)
 Township/Range: T118N, R52W & T118N, R51W
 Codington County, South Dakota
 Page 000006 **SWCA**
 ENVIRONMENTAL CONSULTANTS
 Projection: NAD 1983 UTM Zone 14N