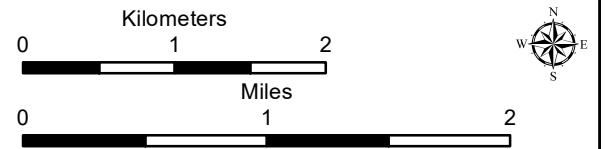
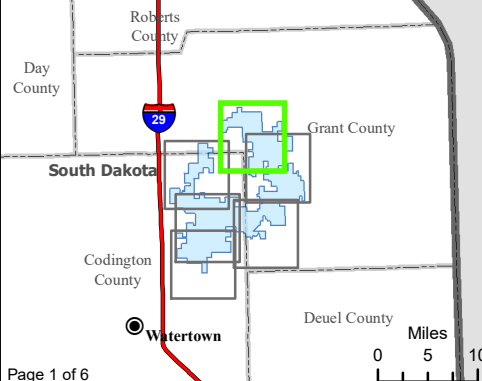


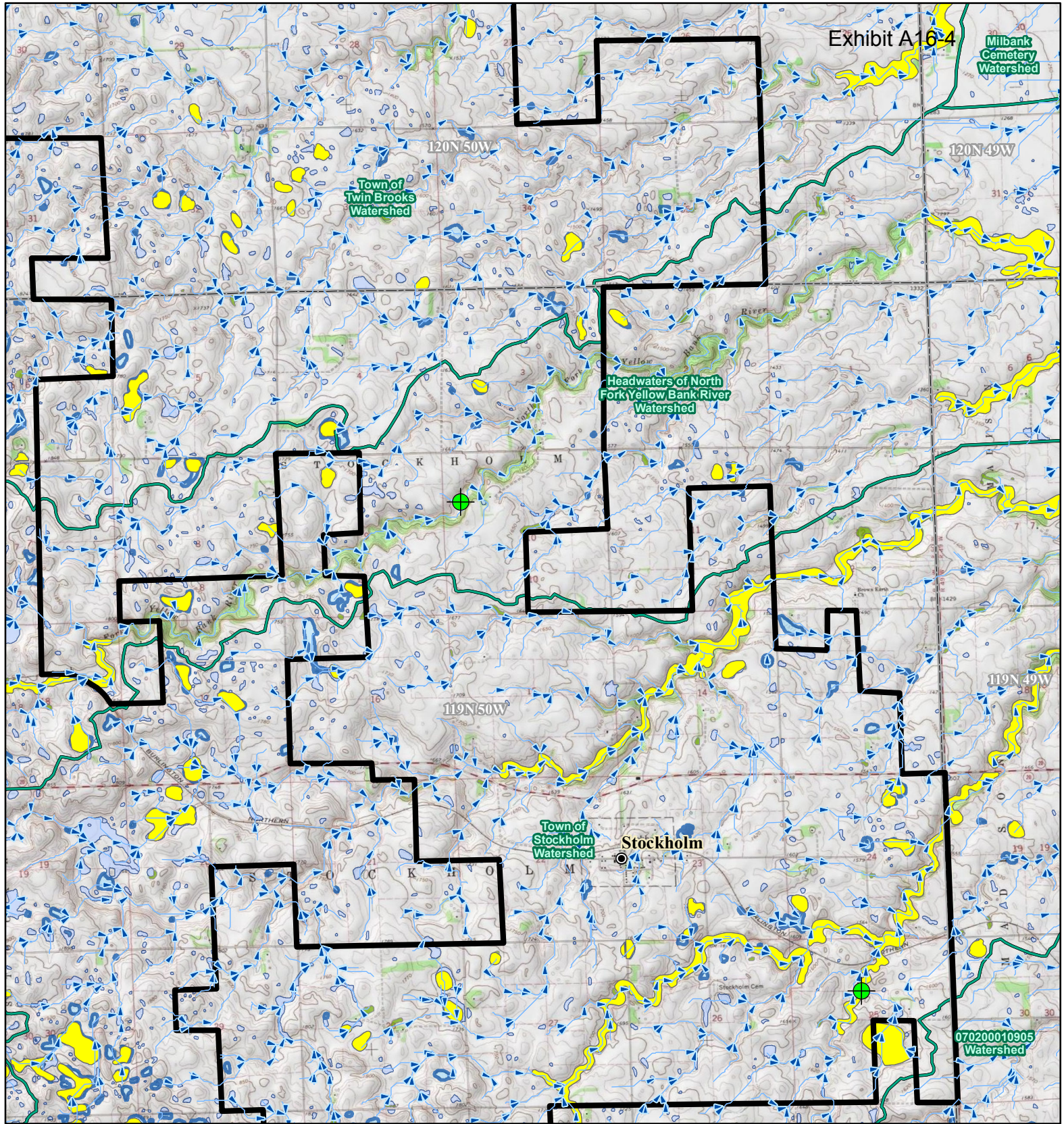
Exhibit A16-4

**Figure 12. Water Resources**  
Crowned Ridge Wind Farm

- Intersection of Floodplain and Project Infrastructure
- City
- Flow Direction
- South Dakota Beneficial Use Stream
- South Dakota Beneficial Use Lake
- Watershed Boundary (HUC12)
- Project Boundary
- County Boundary
- Township/Range Boundary
- FEMA Flood Zone**
- A
- NWI Wetland**
- Freshwater Emergent Wetland
- Freshwater Forested/ Shrub Wetland
- Lake, Pond, or Riverine Wetland

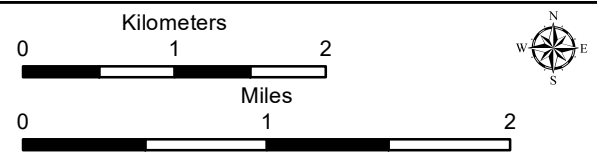
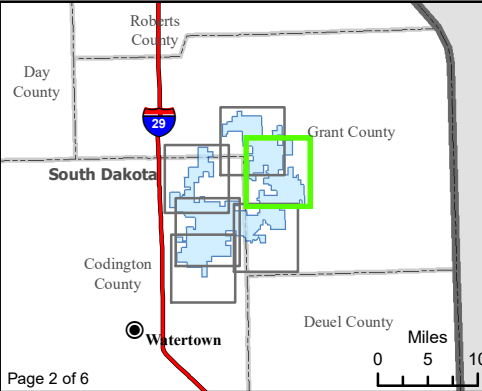


Base Map: USGS 7.5' Topographic Map  
Source: Esri ArcGIS Online service  
Quadrangle: Antelope Valley (1973),  
Twin Brooks (1973), Stockholm (1973)  
Township/Range: T120N, R51W &  
T120N, R50W & T119N, R50W  
Grant County, South Dakota



**Figure 12. Water Resources**  
Crowned Ridge Wind Farm

- Intersection of Floodplain and Project Infrastructure
- City
- Flow Direction
- South Dakota Beneficial Use Stream
- South Dakota Beneficial Use Lake
- Watershed Boundary (HUC12)
- Project Boundary
- County Boundary
- Township/Range Boundary
- FEMA Flood Zone**
- A
- NWI Wetland**
- Freshwater Emergent Wetland
- Freshwater Forested/ Shrub Wetland
- Lake, Pond, or Riverine Wetland



Base Map: USGS 7.5' Topographic Map  
 Source: Esri ArcGIS Online service  
 Quadrangle: Twin Brooks (1973),  
 Stockholm (1973)  
 Township/Range: T120N, R50W &  
 T119N, R50W  
 Grant County, South Dakota

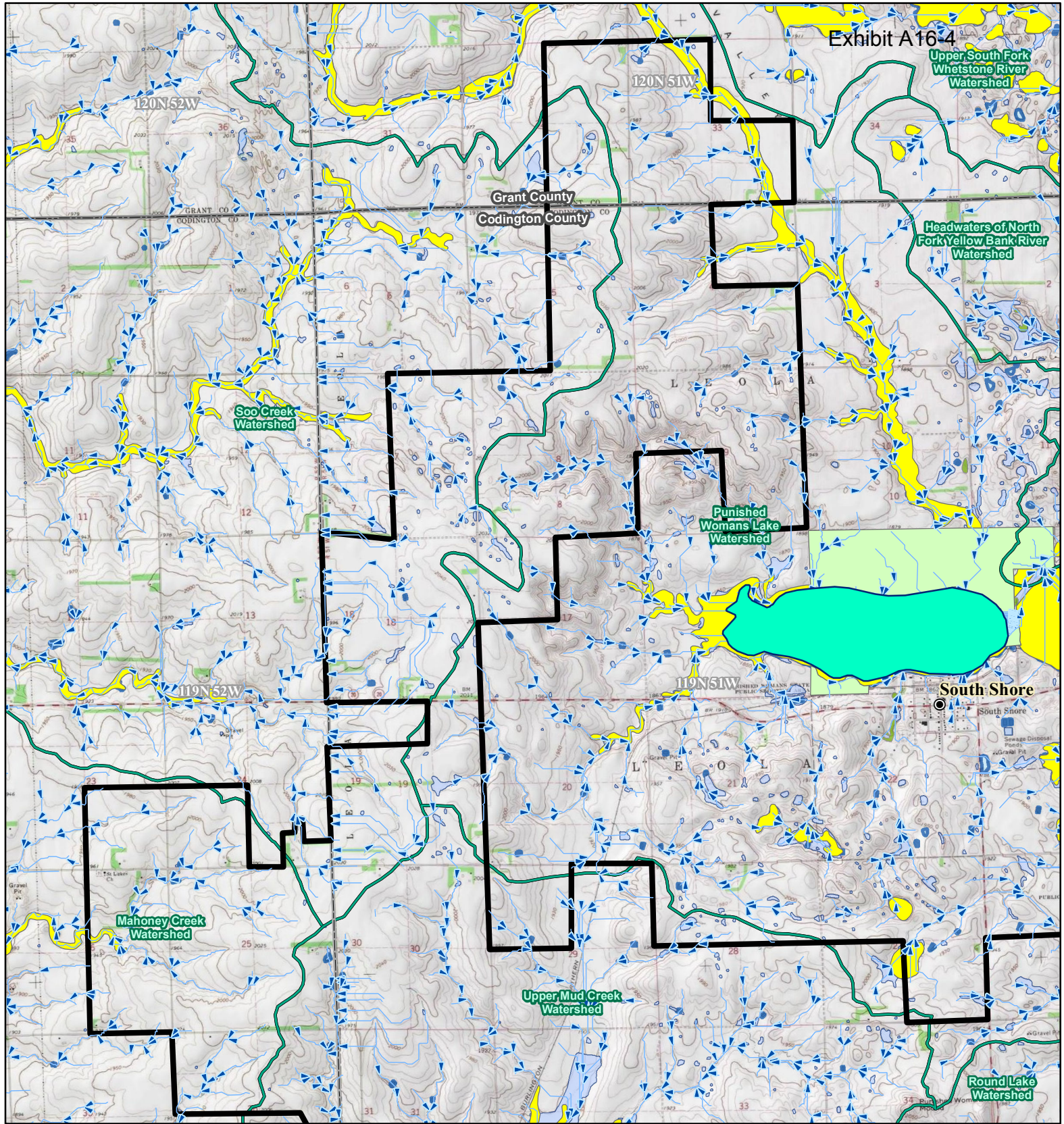
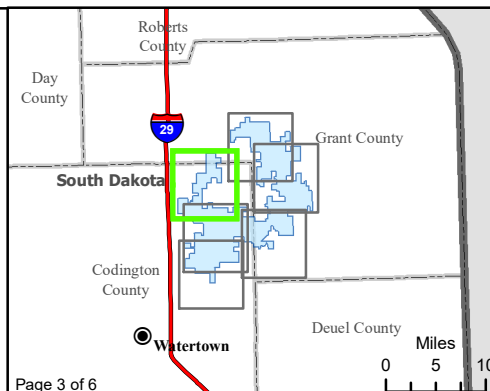


Exhibit A16-4

**Figure 12. Water Resources**  
Crowned Ridge Wind Farm

- Intersection of Floodplain and Project Infrastructure
- City
- Flow Direction
- South Dakota Beneficial Use Stream
- South Dakota Beneficial Use Lake
- Watershed Boundary (HUC12)
- Project Boundary
- County Boundary
- Township/Range Boundary
- FEMA Flood Zone**
  - A
  - D
- NWI Wetland**
  - Freshwater Emergent Wetland
  - Freshwater Forested/Shrub Wetland
  - Lake, Pond, or Riverine Wetland



Kilometers

0 1 2

---

Miles

0 1 2

Base Map: USGS 7.5' Topographic Map  
 Source: Esri ArcGIS Online service  
 Quadrangle: Antelope Valley (1973), Still Lake SE (1970), South Shore (1973)  
 Township/Range: T120N, R51W & T119N, R52W & T119N, R51W  
 Codington and Grant Counties, South Dakota

**Page 000003** **SWCA**  
ENVIRONMENTAL CONSULTANTS

Projection: NAD 1983 UTM Zone 14N

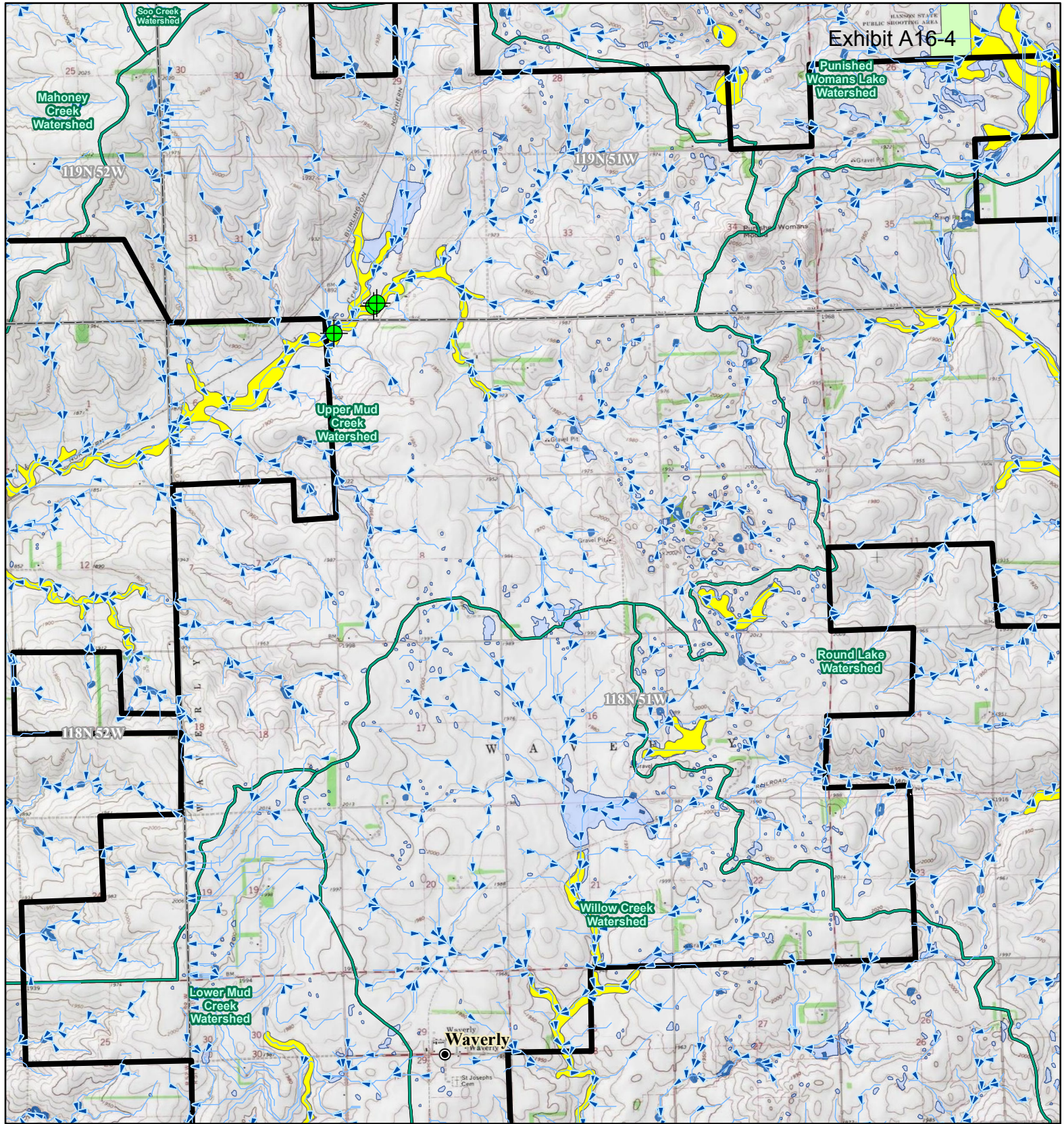
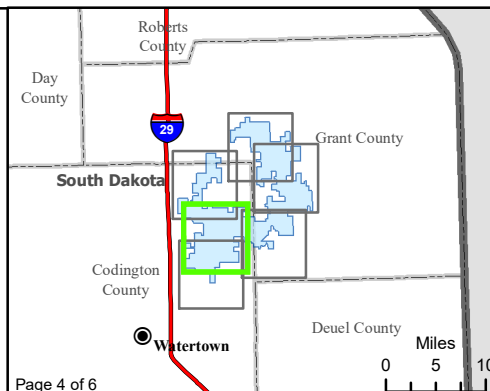


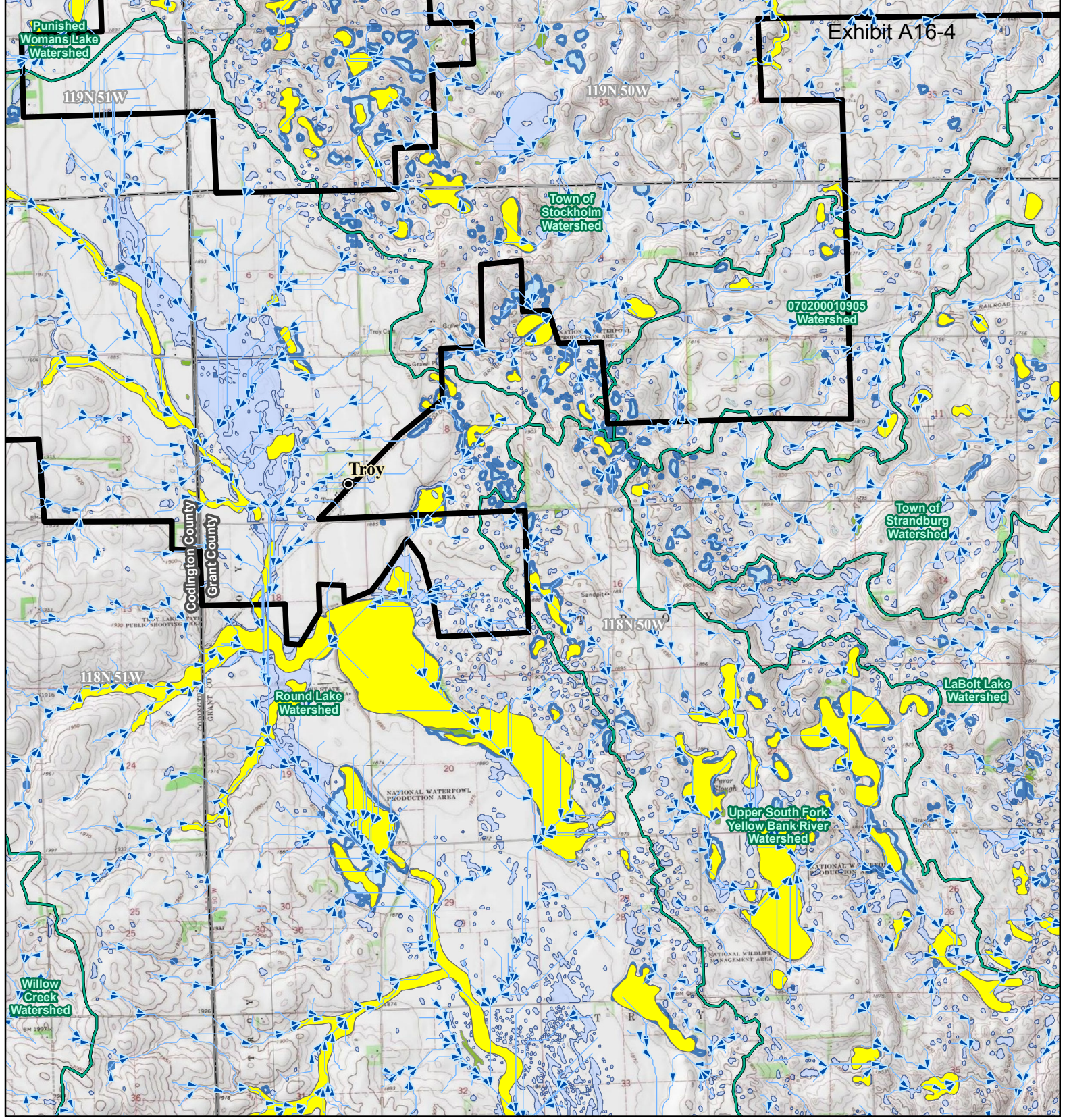
Exhibit A16-4

**Figure 12. Water Resources**  
Crowned Ridge Wind Farm


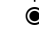





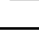





- Intersection of Floodplain and Project Infrastructure
- City
- Flow Direction
- South Dakota Beneficial Use Stream
- South Dakota Beneficial Use Lake
- Watershed Boundary (HUC12)
- Project Boundary
- County Boundary
- Township/Range Boundary
- FEMA Flood Zone**
- A
- D
- NWI Wetland**
- Freshwater Emergent Wetland
- Freshwater Forested/Shrub Wetland
- Lake, Pond, or Riverine Wetland

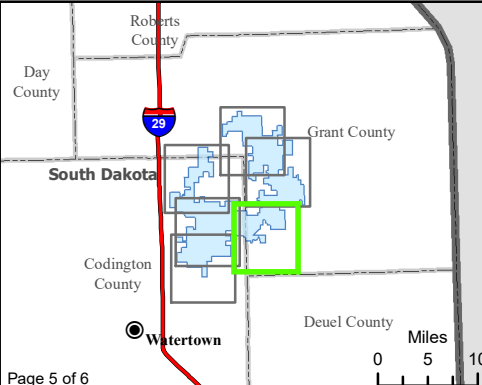


Base Map: USGS 7.5' Topographic Map  
 Source: Esri ArcGIS Online service  
 Quadrangle: Still Lake SE (1970), South Shore (1973),  
 Watertown East (1969), Kranzburg (1970)  
 Township/Range: T119N, R52W & T119N, R51W &  
 T118N, R52W & T118N, R51W  
 Codington County, South Dakota  
 Page 00004 **SWCA**  
 ENVIRONMENTAL CONSULTANTS  
 Projection: NAD 1983 UTM Zone 14N



**Figure 12. Water Resources**  
Crowned Ridge Wind Farm

-  Intersection of Floodplain and Project Infrastructure
-  City
-  Flow Direction
-  South Dakota Beneficial Use Stream
-  South Dakota Beneficial Use Lake
-  Watershed Boundary (HUC12)
-  Project Boundary
-  County Boundary
-  Township/Range Boundary
- FEMA Flood Zone**
-  A
- NWI Wetland**
-  Freshwater Emergent Wetland
-  Freshwater Forested/ Shrub Wetland
-  Lake, Pond, or Riverine Wetland




Kilometers

0 1 2

---

Miles

0 1 2



Base Map: USGS 7.5' Topographic Map  
 Source: Esri ArcGIS Online service  
 Quadrangle: South Shore (1973),  
 Stockholm (1973)  
 Township/Range: T119N, R51W & T119N, R50W &  
 T118N, R51W & T118N, R50W  
 Codington and Grant Counties, South Dakota

Page 000005 **SWCA**  
 ENVIRONMENTAL CONSULTANTS

Projection: NAD 1983 UTM Zone 14N

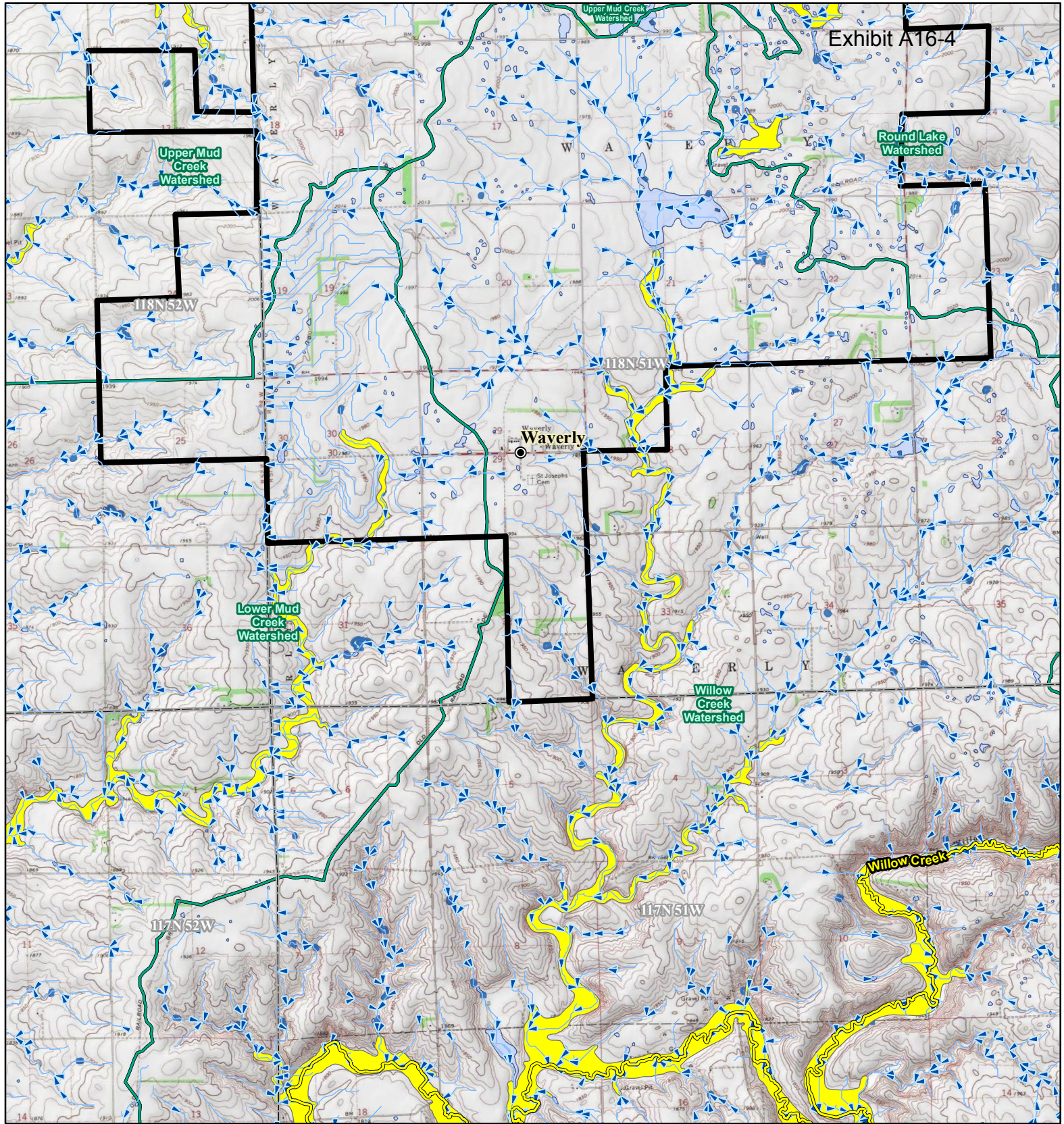


Exhibit A16-4

Upper Mud Creek Watershed

Round Lake Watershed

Waverly

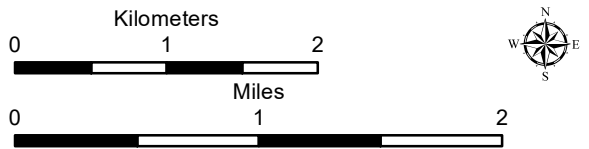
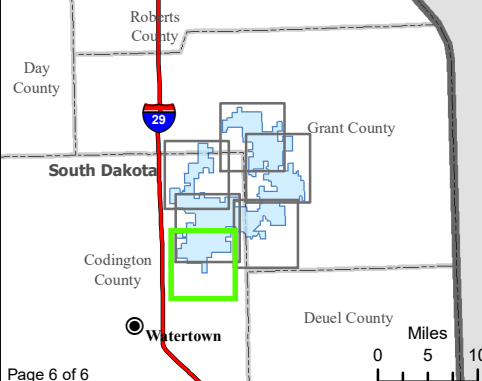
Willow Creek Watershed

Lower Mud Creek Watershed

Willow Creek

**Figure 12. Water Resources**  
Crowned Ridge Wind Farm

- Intersection of Floodplain and Project Infrastructure
- City
- Flow Direction
- South Dakota Beneficial Use Stream
- South Dakota Beneficial Use Lake
- Watershed Boundary (HUC12)
- Project Boundary
- County Boundary
- Township/Range Boundary
- FEMA Flood Zone**
- A
- NWI Wetland**
- Freshwater Emergent Wetland
- Freshwater Forested/Shrub Wetland
- Lake, Pond, or Riverine Wetland



Base Map: USGS 7.5' Topographic Map  
 Source: Esri ArcGIS Online service  
 Quadrangle: Still Lake SE (1970), South Shore (1973), Watertown East (1969), Kranzburg (1970)  
 Township/Range: T118N, R52W & T118N, R51W  
 Codington County, South Dakota  
 Page 000006 **SWCA**  
 ENVIRONMENTAL CONSULTANTS  
 Projection: NAD 1983 UTM Zone 14N