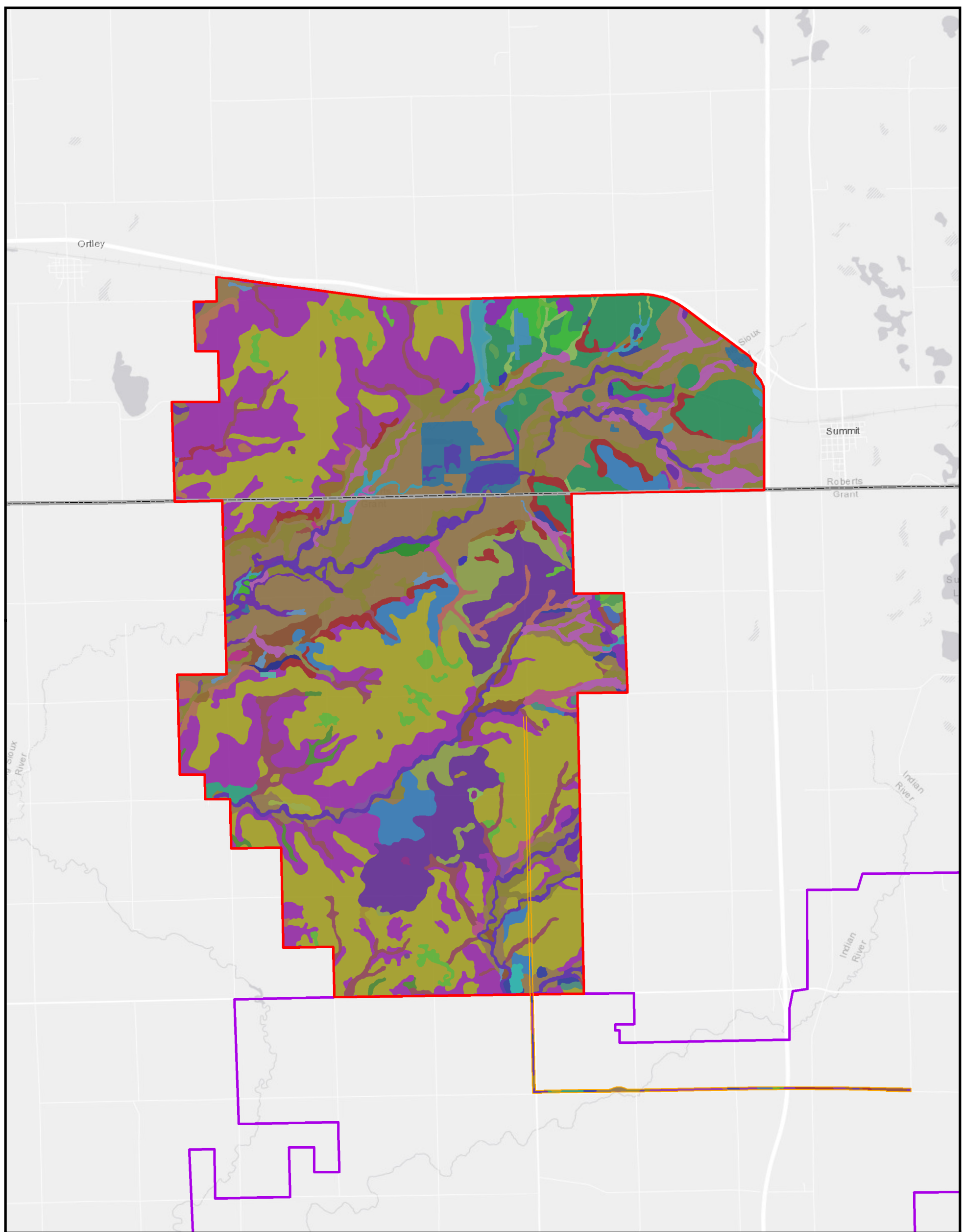
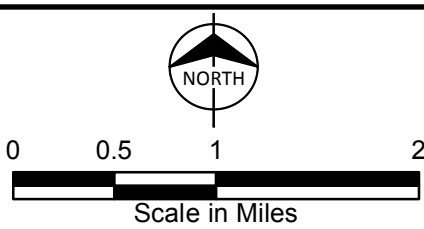


Path: Z:\Resources\Local\Clients\KCMENSA\pex\CleanEmr\110539\_DakotaRangeIII\ArcGIS\Geospatial\DataFiles\ArcDocs\DakotaRange\_III\_Soils.mxd 10/22/2018  
 COPYRIGHT © 2018 BURNS & McDONNELL ENGINEERING COMPANY, INC.



Soil Taxonomy: Symbol and Name		
M-W - Miscellaneous water	Z144E - Buse-Barnes loams, coteau, 9 to 20 percent slopes	Z177 - Udorthents, coteau (gravel pits)
Ta - Tonka silty clay loam, 0 to 1 percent slopes	Z145D - Buse-Barnes loams, coteau, 2 to 15 percent slopes, very stony	Z178A - Rentill loam, coteau, 0 to 2 percent slopes
W - Water	Z150A - Rauville silty clay loam, coteau, 0 to 1 percent slopes, frequently flooded	Z182A - Estelline silt loam, coteau, 0 to 2 percent slopes
Z102A - Badger-Tonka silty clay loams, coteau, 0 to 1 percent slopes	Z152A - Lamoure silty clay loam, coteau, 0 to 1 percent slopes, occasionally flooded	Z186B - Maddock-Egeland sandy loams, coteau, 2 to 6 percent slopes
Z107A - Parnell silty clay loam, coteau, 0 to 1 percent slopes	Z153A - Lamoure-Rauville silty clay loams, channeled, 0 to 2 percent slopes, frequently flooded	Z188B - Lanona-Swenoda fine sandy loams, coteau, 2 to 6 percent slopes
Z112A - Vallery-Hamerly loams, coteau, 0 to 2 percent slopes	Z157A - Fairdale loam, channeled, 0 to 2 percent slopes, frequently flooded	Z190A - Brookings silty clay loam, 0 to 2 percent slopes
Z114A - Hamerly-Tonka complex, coteau, 0 to 2 percent slopes	Z158A - Marysland loam, 0 to 1 percent slopes, occasionally flooded	Z192A - Vienna-Brookings complex, 0 to 2 percent slopes
Z115A - Hamerly-Badger complex, coteau, 0 to 2 percent slopes	Z159A - Divide loam, 0 to 2 percent slopes, occasionally flooded	Z192B - Vienna-Brookings complex, 1 to 6 percent slopes
Z116A - McKranz-Hidewood, frequently flooded, silty clay loams, 0 to 2 percent slopes	Z160A - Moritz, occasionally flooded-Lamoure, frequently flooded, complex, 0 to 2 percent slopes	Z193C - Vienna-Buse complex, coteau, 6 to 9 percent slopes
Z117A - McKranz-Badger silty clay loams, 0 to 2 percent slopes	Z161A - Spottswood loam, 0 to 2 percent slopes, occasionally flooded	Z194A - Barnes clay loam, coteau, 0 to 2 percent slopes
Z119A - Hamerly-Balaton loams, coteau, 0 to 3 percent slopes	Z166A - Fordtown loam, 0 to 2 percent slopes, rarely flooded	Z194B - Barnes clay loam, coteau, 2 to 6 percent slopes
Z139 - Udorthents, loamy, coteau (cut and fill land)	Z167A - Renwash loam, 0 to 2 percent slopes, rarely flooded	Z198A - Vienna-Forestville loams, coteau, 0 to 2 percent slopes
Z141A - Barnes-Svea loams, coteau, 0 to 2 percent slopes	Z168A - Allivar sandy loam, 0 to 2 percent slopes, rarely flooded	Z199B - Vienna-Barnes-Forestville loams, 1 to 6 percent slopes
Z141B - Barnes-Svea loams, coteau, 1 to 6 percent slopes	Z171A - Renshaw-Fordville loams, coteau, 0 to 2 percent slopes	Z217A - McKranz silty clay loam, 0 to 2 percent slopes
Z142B - Barnes-Buse-Svea loams, coteau, 1 to 6 percent slopes	Z171B - Renshaw-Fordville loams, coteau, 2 to 6 percent slopes	Z252A - Hidewood silty clay loam, 0 to 2 percent slopes, frequently flooded
Z142C - Barnes-Buse-Svea loams, coteau, 2 to 9 percent slopes	Z173B - Renshaw-Sioux complex, coteau, 2 to 6 percent slopes	Z298B - Vienna-Barnes very stony-Forestville loams, 1 to 6 percent slopes
Z143C - Barnes-Buse loams, coteau, 6 to 9 percent slopes	Z173C - Renshaw-Sioux complex, 6 to 9 percent slopes	
	Z175D - Renshaw-Sioux complex, 2 to 15 percent slopes, very stony	

- Transmission Line ROW
- Project Area: Dakota Range III
- Dakota Range I/II
- County Boundary



**FIGURE 11:  
SOIL TYPES**

**DAKOTA RANGE III  
WIND ENERGY FACILITY  
& TRANSMISSION LINE  
SDPUC APPLICATION**