

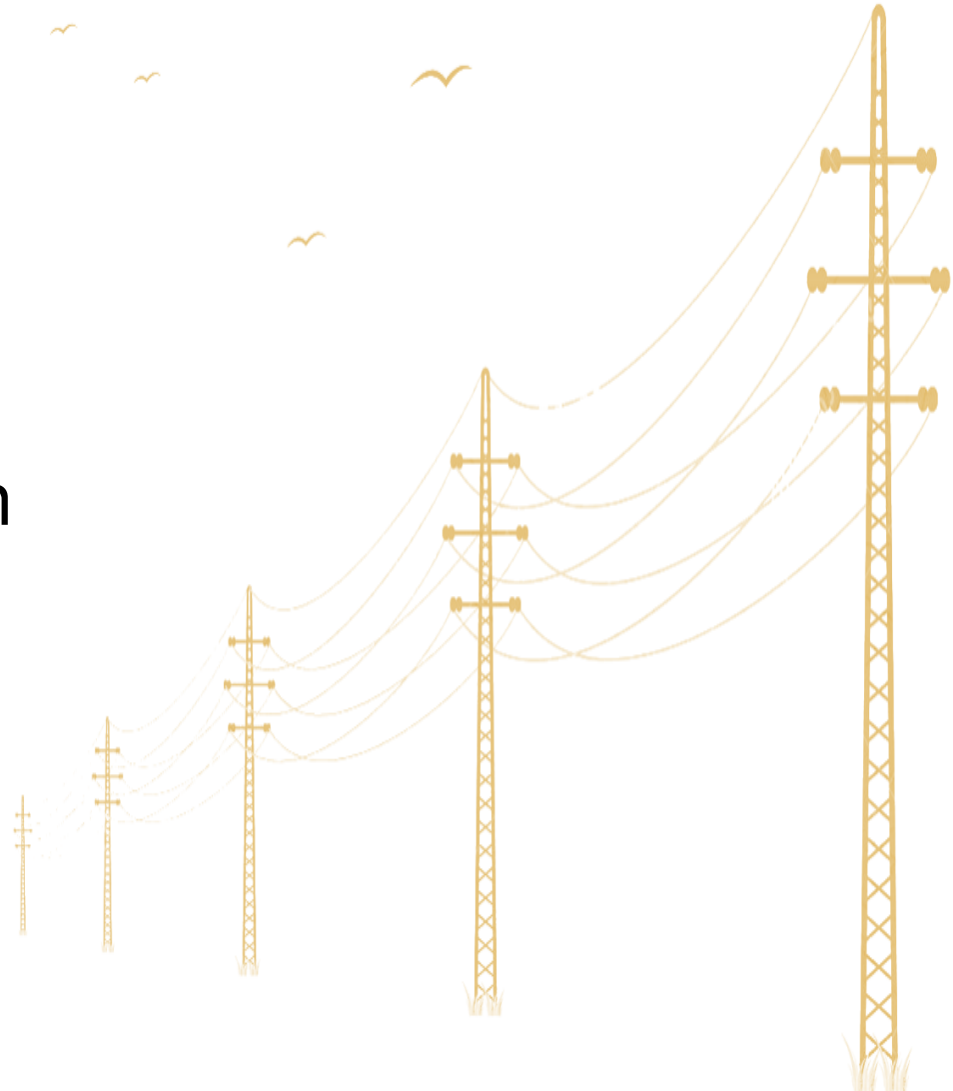
The background of the entire slide is a photograph of a transmission line stretching across a vast, open landscape. The landscape is a mix of brown and green, suggesting a semi-arid region. The sky is a clear, pale blue. The transmission line consists of several tall, dark wooden poles with multiple cross-arms and insulators, supporting several high-voltage power lines that curve across the sky.

BITTER ROOT TRANSMISSION LINE PUBLIC INPUT MEETING

Deuel County, SD
December 18, 2018



- Introductions
- RES overview
- Project details
- Questions & discussion





RES at a glance - North America

QUICK FACTS

Founded: 1997

Technologies: Wind, Solar, Energy Storage, Transmission & Distribution

Services: Development, Construction, Operations

Locations: Broomfield, CO (HQ); Austin, TX; Minneapolis, MN; Oakville, Ontario; Old Saybrook, CT; Montreal, Quebec

Employees: >1,000



EXPERIENCE

Wind & Solar: 10,000+ MW renewable energy construction portfolio, of which we've developed over 4,000 MW

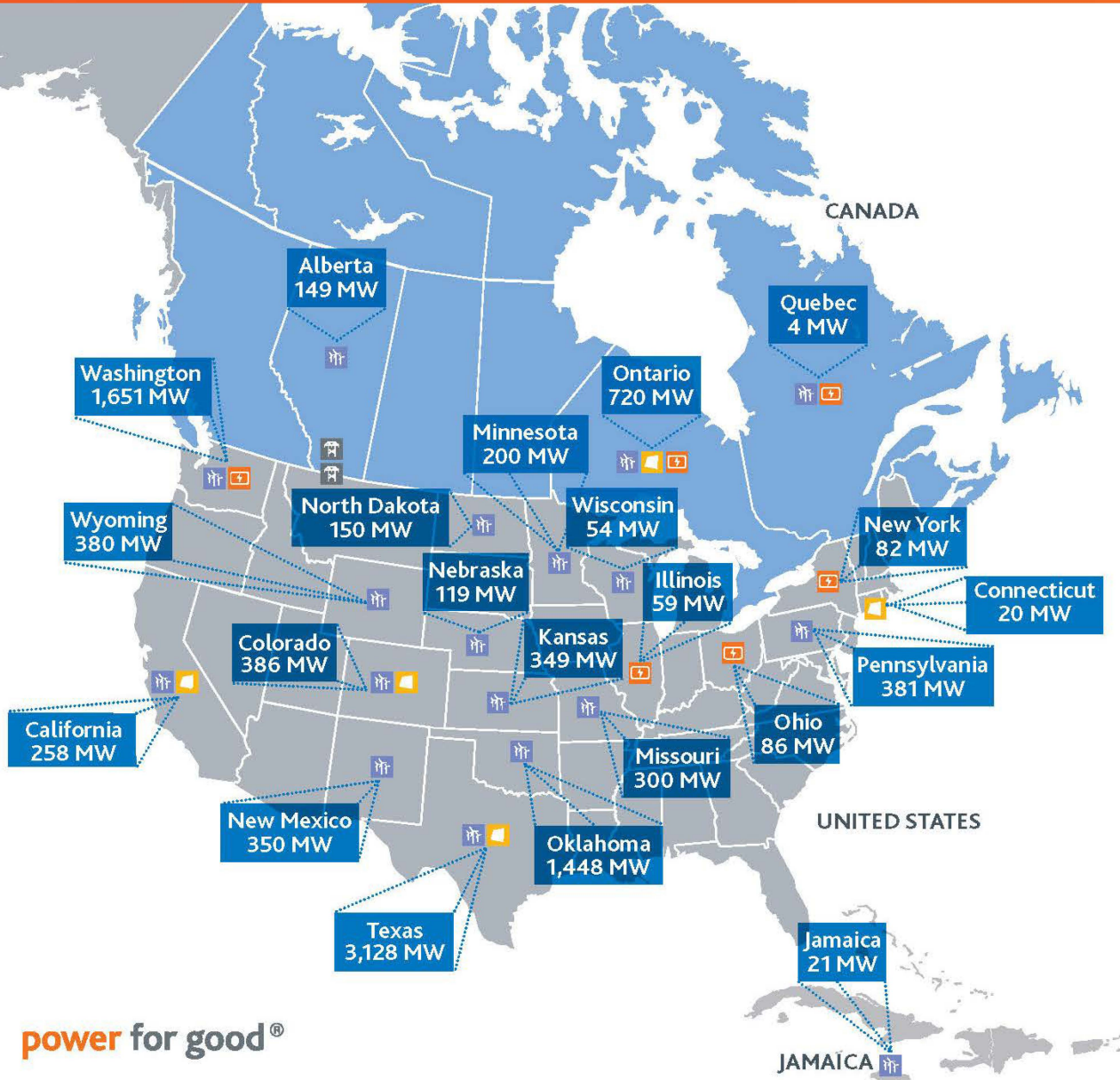
Transmission: 1,000+ miles of overhead & transmission lines (up to 345kV), 300+ substations, & 100+ distribution circuits built

Energy Storage: 128+ MW construction portfolio

Projects: 105+ projects in the U.S., Canada, & the Caribbean



MORE THAN 10,000 MW OF NORTH AMERICAN PROJECT EXPERIENCE



WIND & SOLAR

Construction: >10,000 MW, of which
 Development: >4,500 MW
 Operations: >450 MW

ENERGY STORAGE

Construction: >128 MW, of which
 Operations: >100 MW

TRANSMISSION & DISTRIBUTION

Construction: >1,000 miles of t-lines
 >100 substations
 >300 miles of distribution circuits

105+ PROJECTS

ABOUT OUR COMPANY

RES offers safe, reliable, and economic integrated energy solutions for centralized utility-scale and distributed community-scale electricity markets.



UNITED STATES

Phone 303.439.4200
 info.US@res-group.com

CANADA

Phone 514.525.2113
 info.Canada@res-group.com



Considerations for Routing Transmission Line

Setbacks (required by law):

- From roads/right-of-way
- From county section lines
- From homes
- From nonparticipating landowners

Environmental constraints:

- Environmentally unbuildable areas (wetlands, low areas, etc.)
- Avoid USFWS grassland easements

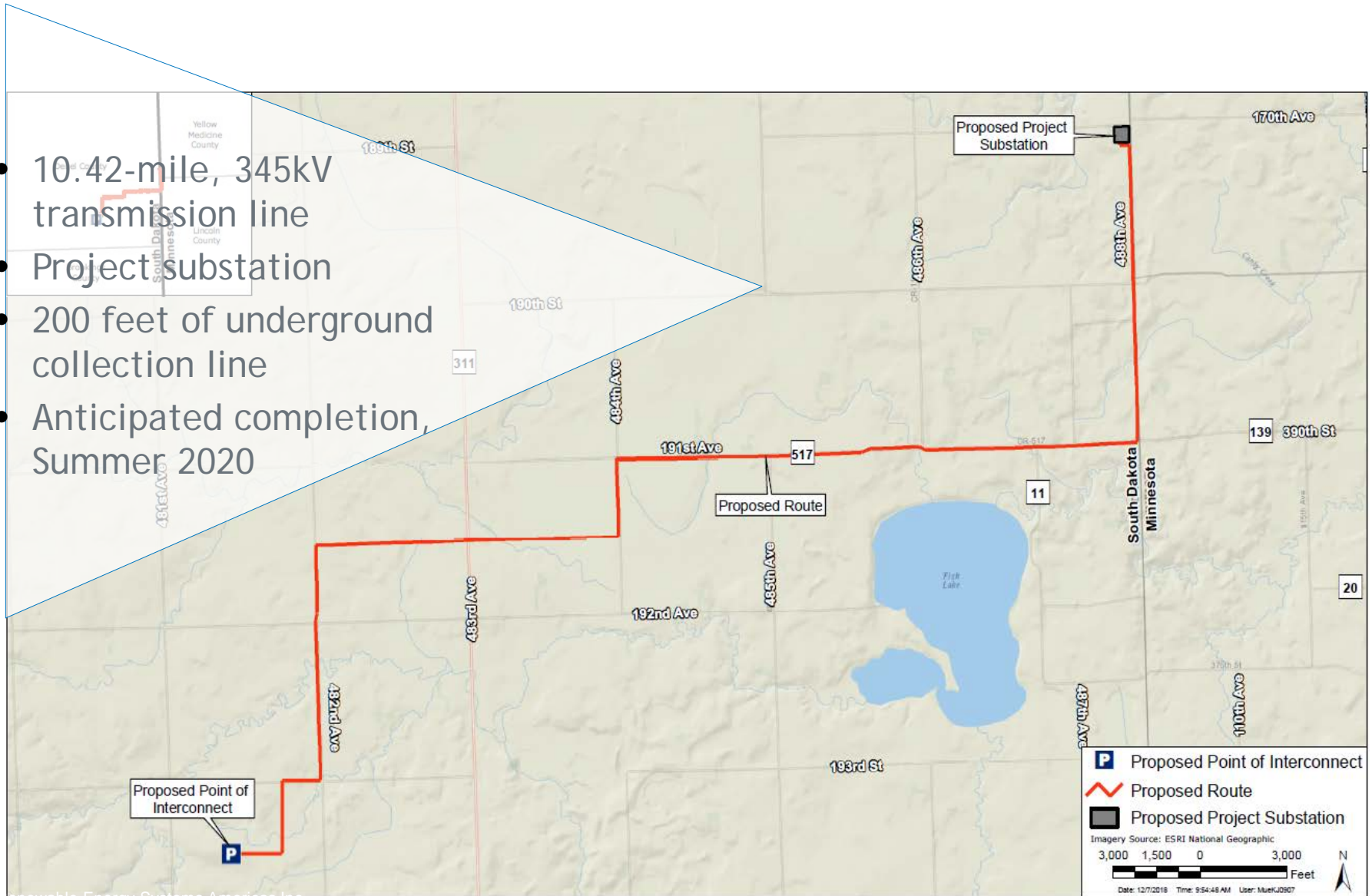
Local Feedback:

- Landowner wishes
- Minimize impacts to agriculture



BITTER ROOT TRANSMISSION LINE

- 10.42-mile, 345kV transmission line
- Project substation
- 200 feet of underground collection line
- Anticipated completion, Summer 2020





- Single-circuit transmission line
- 85 monopole steel structures
- 95-130 feet tall
- 674-ft (average) span between structures





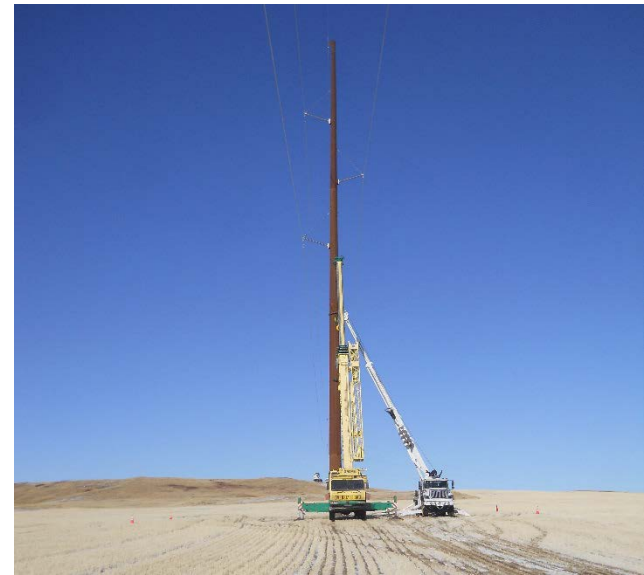
Environmental (and other) studies

- Complete
 - USFWS lands and easement mapping
 - Agency inquiry letters
 - Wetlands, cultural, and habitat field studies
- Underway
 - Consultation with U.S. Fish and Wildlife Service, South Dakota Department of Game, Fish and Parks
 - Permitting through PUC, U.S. Army Corps of Engineers, Deuel County, and other applicable state and local agencies



Project Schedule

- Interconnection Agreement - January 2019
- SD PUC Permit - Spring 2018
- All other permits required prior to construction - Summer 2019
- Start of construction - Fall 2019
- Project commissioned - August 2020





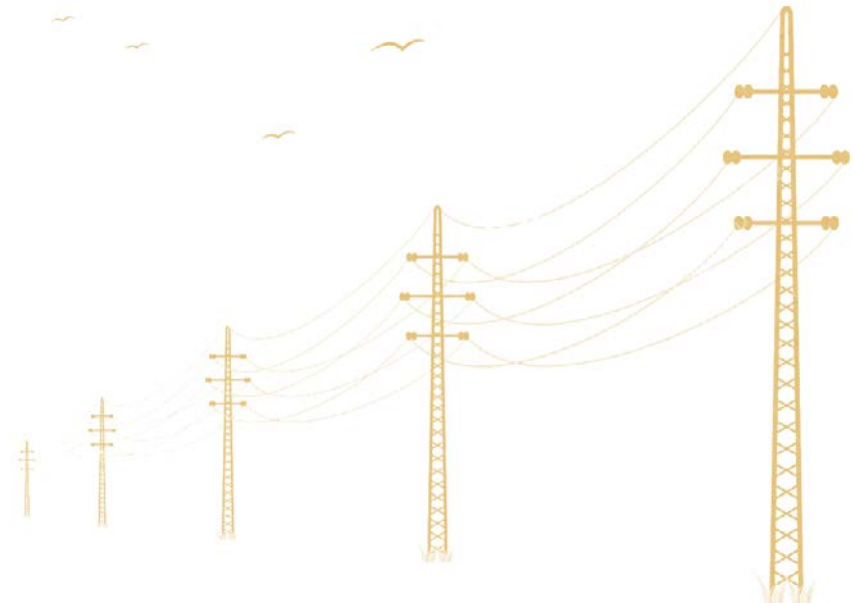
Construction Overview

- Route clearing - removal of trees and brush within right-of-way
- Temporary laydown/staging areas - material deliveries, construction vehicles and equipment storage
- Ground assembly of structures
- Lift and set structures - direct embed poles, some require concrete foundations
- Stringing and pulling of conductor
- Restoration and energization - dismantle temporary facilities, restore disturbed areas, re-seeding



Project Benefits

- Delivering enough clean energy to power **57,500** average households each year.
- **Local construction jobs**, such as electrical, excavating, concrete, & drain tile.
- Increased local business (hotel, dining, services, etc.) during construction.
- **\$125,000+** in annual payments to local landowners.
- Local contractors hired for maintenance.
- Increases the region's tax & employment base over the long-term.



Thank you!

Michelle Matthews
Development Manager
612.590.8653
Michelle.Matthews@res-group.com

Sean Flannery
Permitting Director
651.338.5986
Sean.Flannery@res-group.com

330 2nd Avenue South
Suite 820
Minneapolis, MN 55403
www.res-group.com

