

- Cemetery
- NonParticipating Residence
- Participating Residence
- Transmission

Setbacks include the following:

- Public Roads (541 ft.)
- NonParticipating Parcels (541 ft.)
- Occupied Residences
 - NonParticipating (1000 ft.)
 - Participating (500 ft.)
- Transmission Line (541 ft.)
- Cemeteries (1000 ft.)

Environmental Avoidance Area includes:

- Wetlands
- Waterbodies
- Prairie Grouse Leaks
- USFWS Conservation Easement
- USFWS Grassland Easement
- USFWS Wetland Easement Basins
- Higher Quality Native Grasslands



Dakota Range Wind
Project Micrositing
 Grant and Codington County, SD
 45.159283, -97.058736

- Primary Turbine Location - LAY 43 (72)
- Spare Turbine Location - LAY 43 (13)
- Cancelled Turbine Location (LAY 41) (4)
- Moved Turbine (LAY 41) (4)
- Temporary MetTower, Existing
- PermenantMet, Proposed
- Project Area Boundary
- Laydown Yard
- O and M Facility
- Project Substation
- Interconnect Switchyard
- Setbacks
- Environmental Avoidance Area

Note:
 1. Turbines are not drawn to scale.
 2. Turbine numbering is not sequential.

0 0.3750.75 1.5 2.25 3
 0 0.25 0.5 1 1.5 2
 Kilometers
 Miles

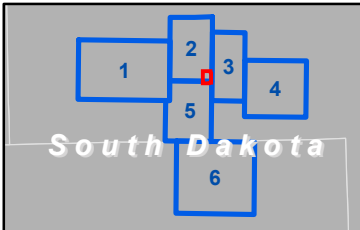
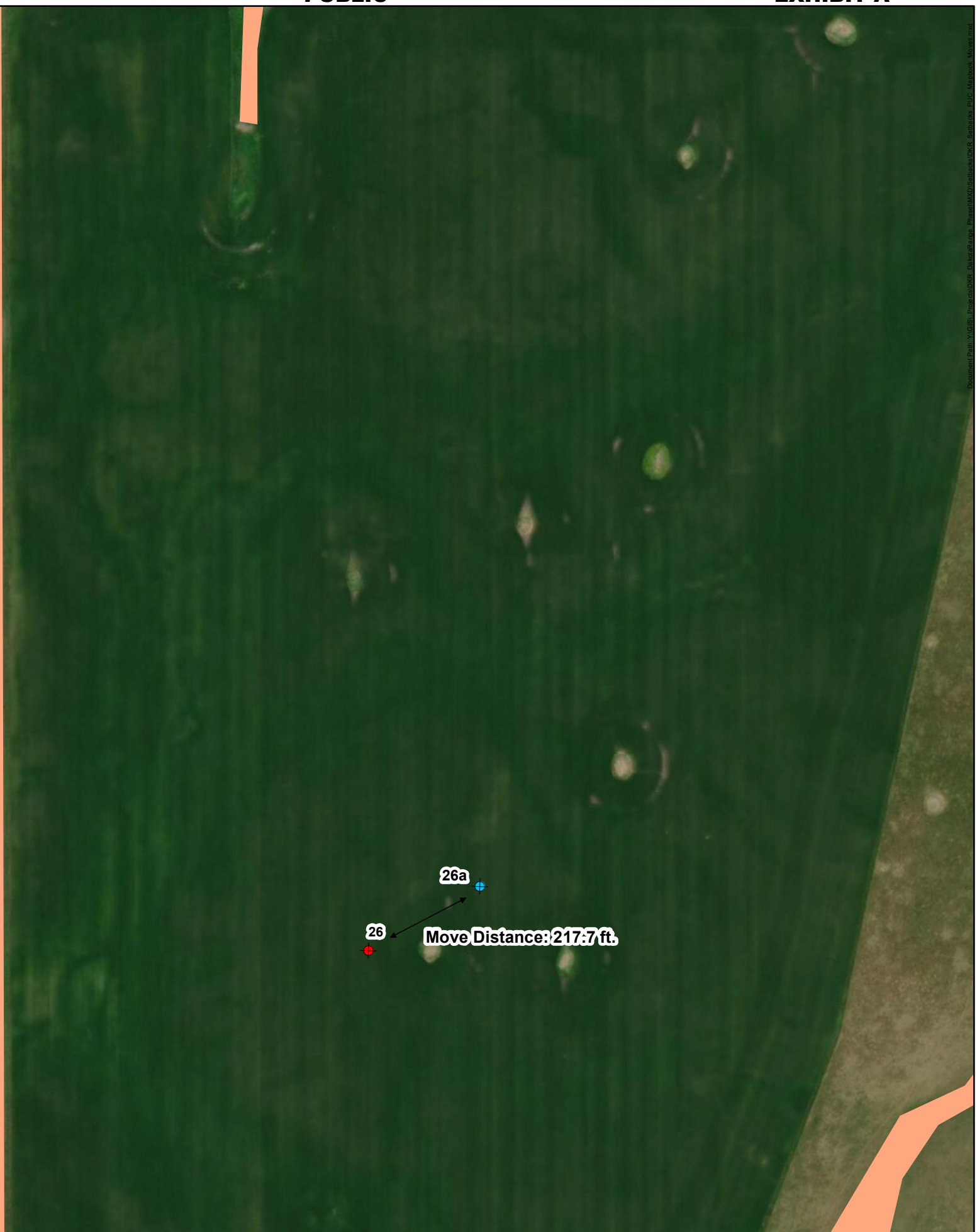
Coordinate System: NAD 1983 StatePlane South Dakota North FIPS 4001 Feet
 Projection: Lambert Conformal Conic
 Date: North American 1983
 False Easting: 1,968,500.0000
 False Northing: 0.0000
 Units: Foot US

APEX
 CLEAN ENERGY

Date: 8/17/2018
 Author: MR

Cemetery
 Transmission

- Setbacks include the following:
- Public Roads (541 ft.)
 - NonParticipating Parcels (541 ft.)
 - Occupied Residences
 - NonParticipating (1000 ft.)
 - Participating (500 ft.)
 - Transmission Line (541 ft.)
 - Cemeteries (1000 ft.)
- Environmental Avoidance Area includes:
- Wetlands
 - Waterbodies
 - Prairie Grouse Leaks
 - USFWS Conservation Easement
 - USFWS Grassland Easement
 - USFWS Wetland Easement Basins
 - Higher Quality Native Grasslands



Dakota Range Wind
 Project Micrositing
 Grant and Codington County, SD
 45.159283, -97.058736

- Project Area Boundary
- Setbacks
- Environmental Avoidance Area
- Primary Turbine Location (LAY 042)
- Primary Turbine Location (LAY 043)

Note:
 1. Turbines are not drawn to scale.
 2. Turbine numbering is not sequential.

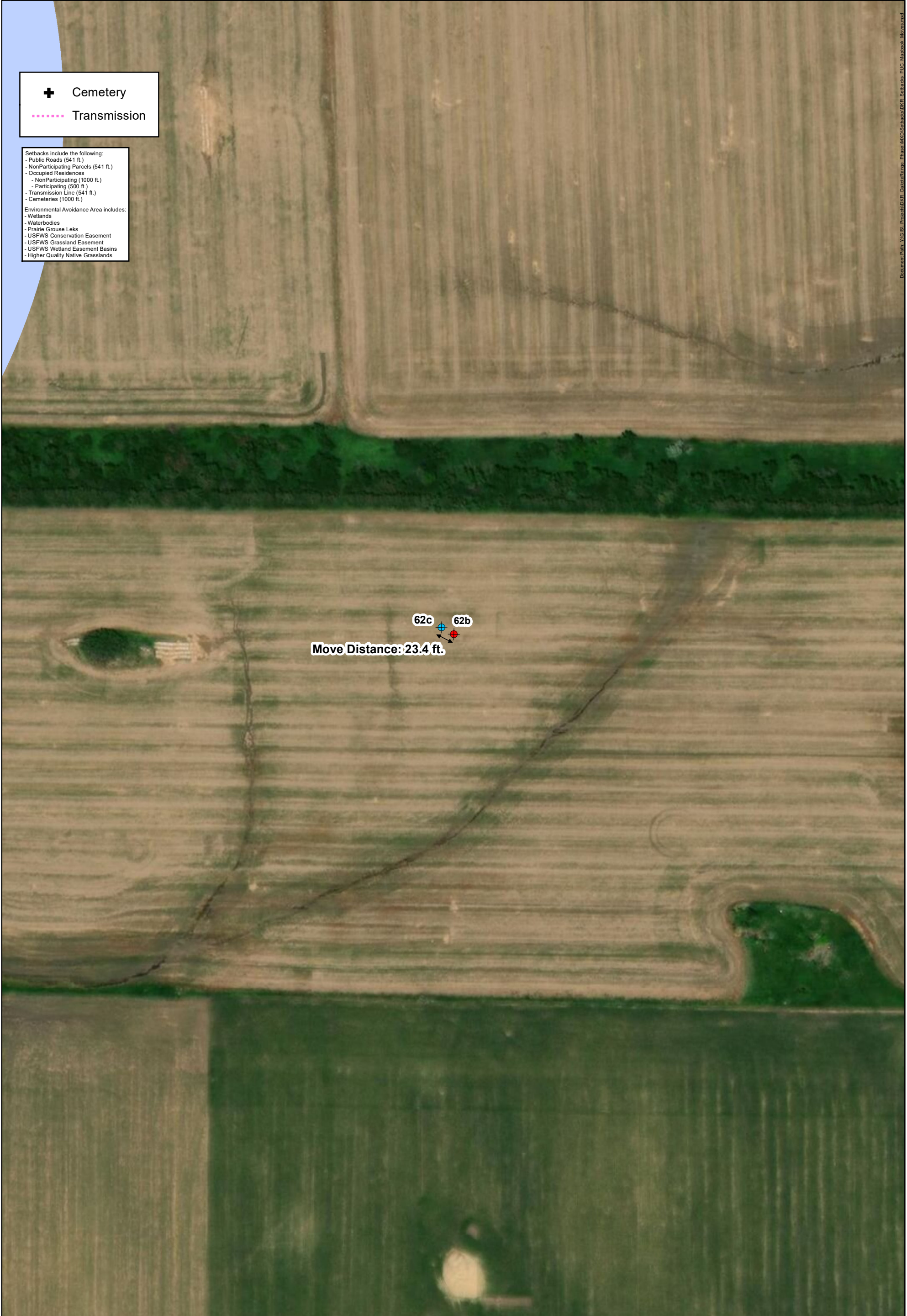
0 0.0075 0.15 0.03 0.045 0.06 Kilometers
 0 0.0075 0.15 0.03 0.045 0.06 Miles

Coordinate System: NAD 1983 StatePlane South Dakota North FIPS 4001 Feet
 Projection: Lambert Conformal Conic
 Datum: North American 1983
 False Easting: 1,968,500.0000
 False Northing: 0.0000
 Units: Foot US

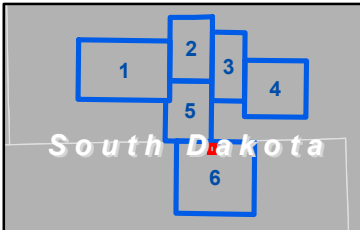
Date: 8/6/2018
 Author: MR

Cemetery
 Transmission

- Setbacks include the following:
- Public Roads (541 ft.)
 - NonParticipating Parcels (541 ft.)
 - Occupied Residences
 - NonParticipating (1000 ft.)
 - Participating (500 ft.)
 - Transmission Line (541 ft.)
 - Cemeteries (1000 ft.)
- Environmental Avoidance Area includes:
- Wetlands
 - Waterbodies
 - Prairie Grouse Leaks
 - USFWS Conservation Easement
 - USFWS Grassland Easement
 - USFWS Wetland Easement Basins
 - Higher Quality Native Grasslands



Document Path: Y:\GIS\Projects\DRG_Case\Stage_Phase\MO\Setbacks\DRR_Setbacks_PUC_Mapbook_Moves.mxd



Dakota Range Wind
Project Micrositing
Grant and Codington County, SD
45.159283, -97.058736

- Project Area Boundary
- Setbacks
- Environmental Avoidance Area
- Primary Turbine Location (LAY 042)
- Primary Turbine Location (LAY 043)

Note:
 1. Turbines are not drawn to scale.
 2. Turbine numbering is not sequential.

Coordinate System: NAD 1983 StatePlane South Dakota North FIPS 4001 Feet
 Projection: Lambert Conformal Conic
 Datum: North American 1983
 False Easting: 1,968,500.0000
 False Northing: 0.0000
 Units: Foot US

Date: 8/6/2018
 Author: MR