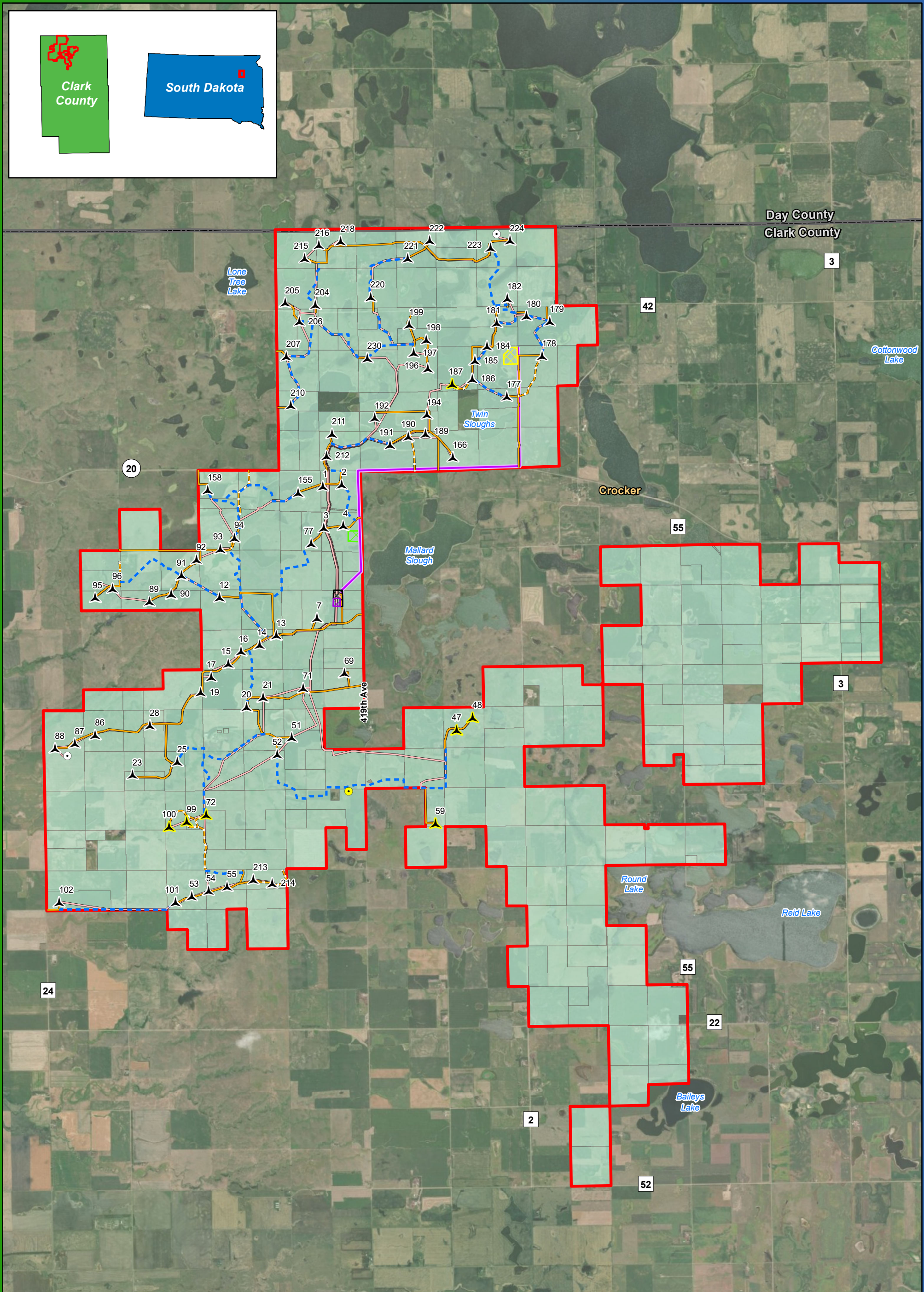


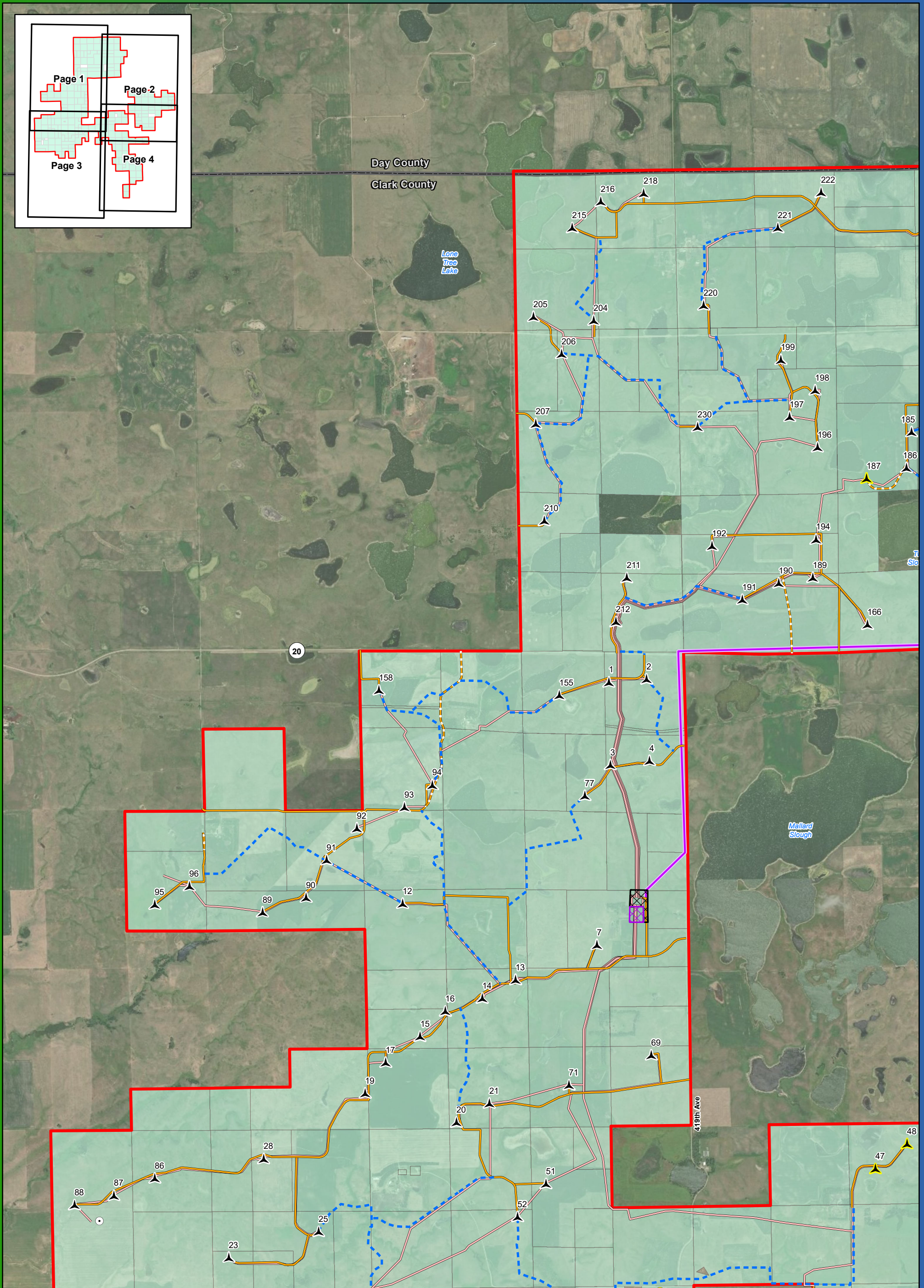
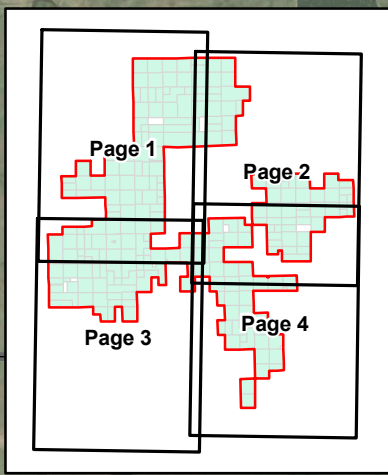
Day County  
Clark County



**Project Layout**  
**Crocker Wind Farm**  
**Clark County, SD**  
**45.079602, -97.845696**

- Primary Turbine Location
- Alternate Turbine Location
- Permanent Met Tower
- ADLS Tower
- Project Area Boundary
- Project Substation
- O&M Facility
- Interconnect Switchyard
- Staging Area
- Interconnection 345 kV Transmission Line
- Access Road
- Alternate Access Road
- Collection Line
- Crane Path
- Participating Landowner

Note: Turbine numbering is not sequential.



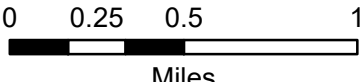
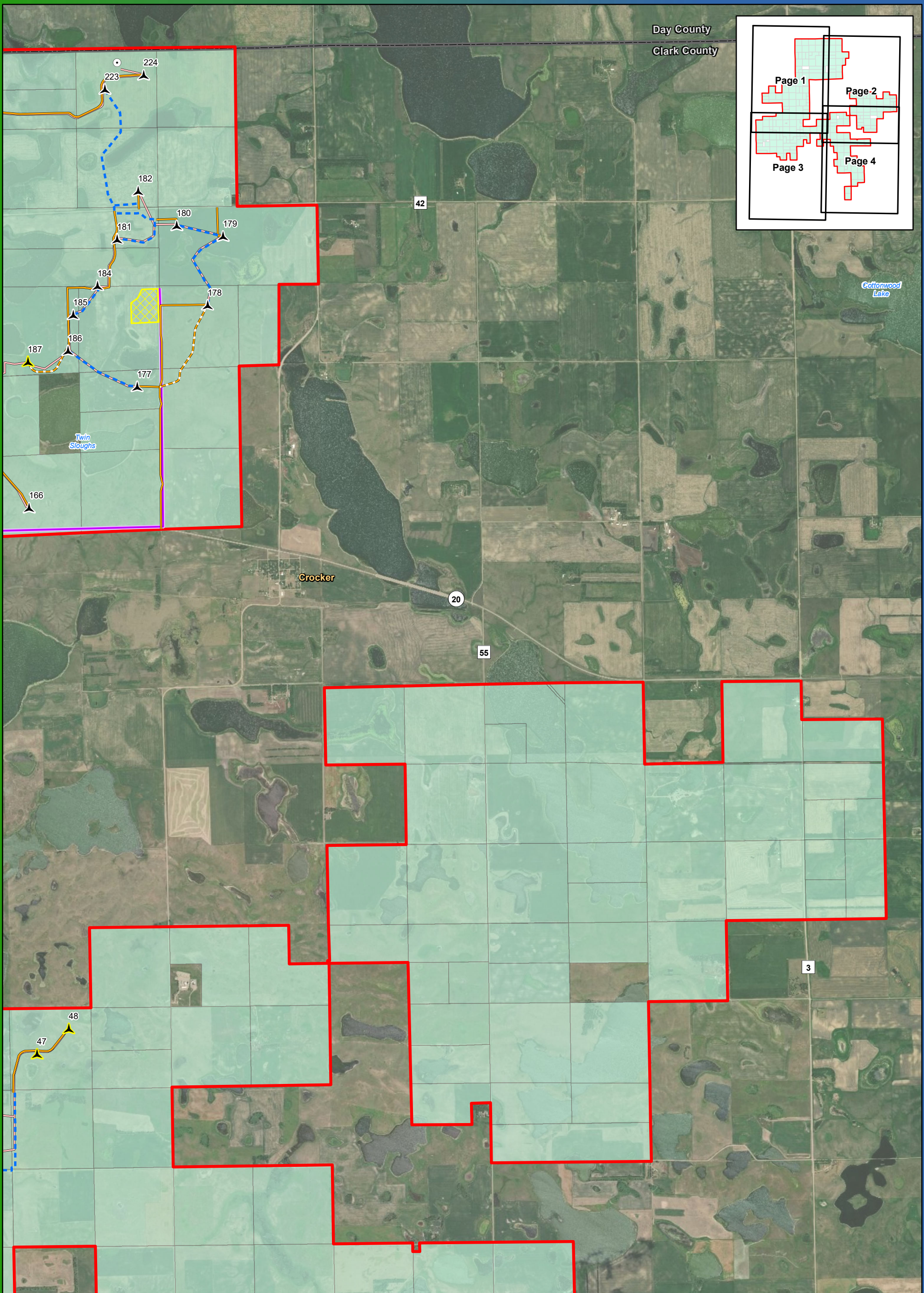
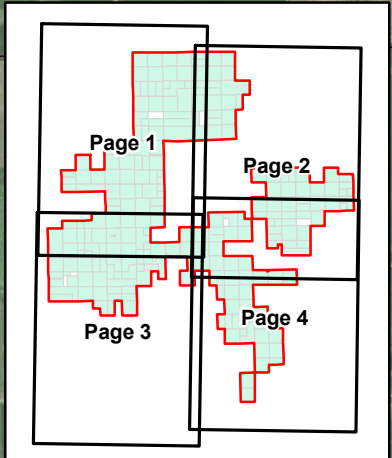
**Project Layout Map Series**

**Crocker Wind Farm  
Clark County, SD**

- Primary Turbine Location
- Alternate Turbine Location
- Project Area Boundary
- Permanent Met Tower
- ADLS Tower
- Project Substation
- O&M Facility
- Interconnect Switchyard
- Staging Area
- Interconnection 345 kV Transmission Line
- Access Road
- Alternate Access Road
- Collection Line
- Crane Path
- Participating Landowner

Note: Turbine numbering is not sequential.

Imagery Source: 2015 Color FSA  
Data Source: Geronimo Energy, US Census, SD DOT



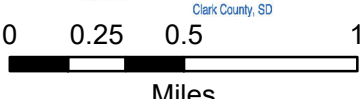
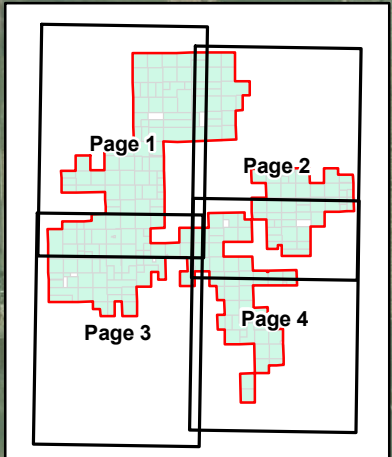
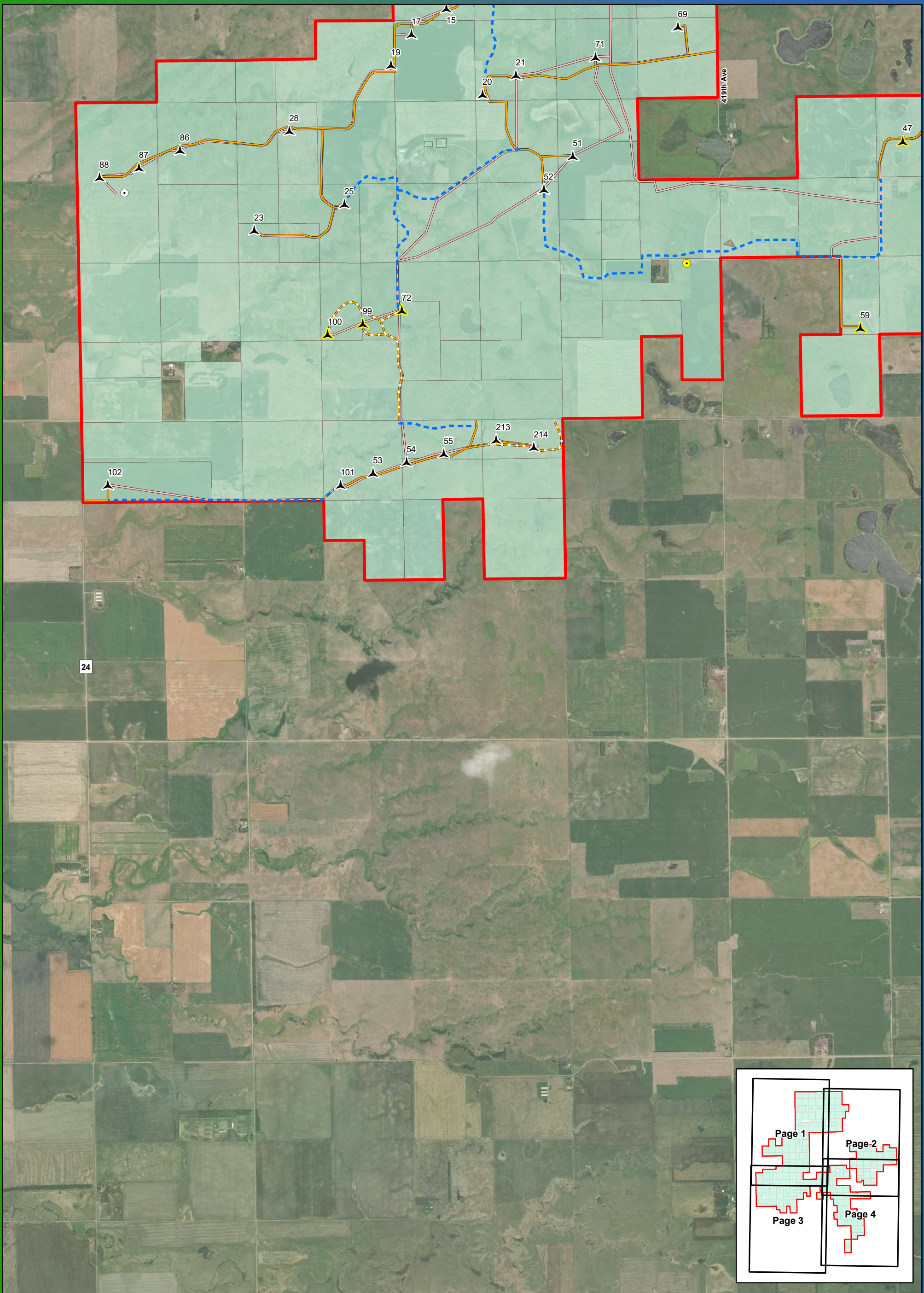
### Project Layout Map Series

## Crocker Wind Farm Clark County, SD

- Primary Turbine Location
- Alternate Turbine Location
- Project Area Boundary
- Permanent Met Tower
- ADLS Tower
- Project Substation
- O&M Facility
- Interconnect Switchyard
- Staging Area
- Interconnection 345 kV Transmission Line
- Access Road
- Alternate Access Road
- Collection Line
- Crane Path
- Participating Landowner

Note: Turbine numbering is not sequential.

Imagery Source: 2015 Color FSA  
Data Source: Geronimo Energy, US Census, SD DOT

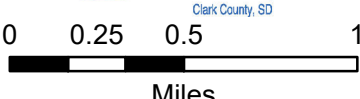
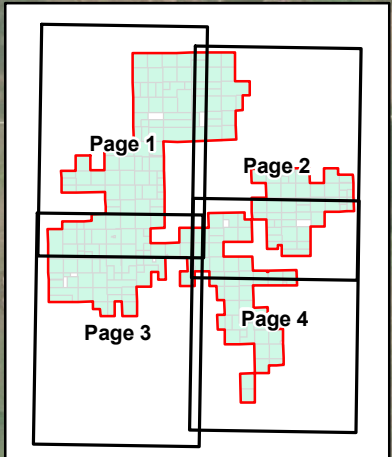
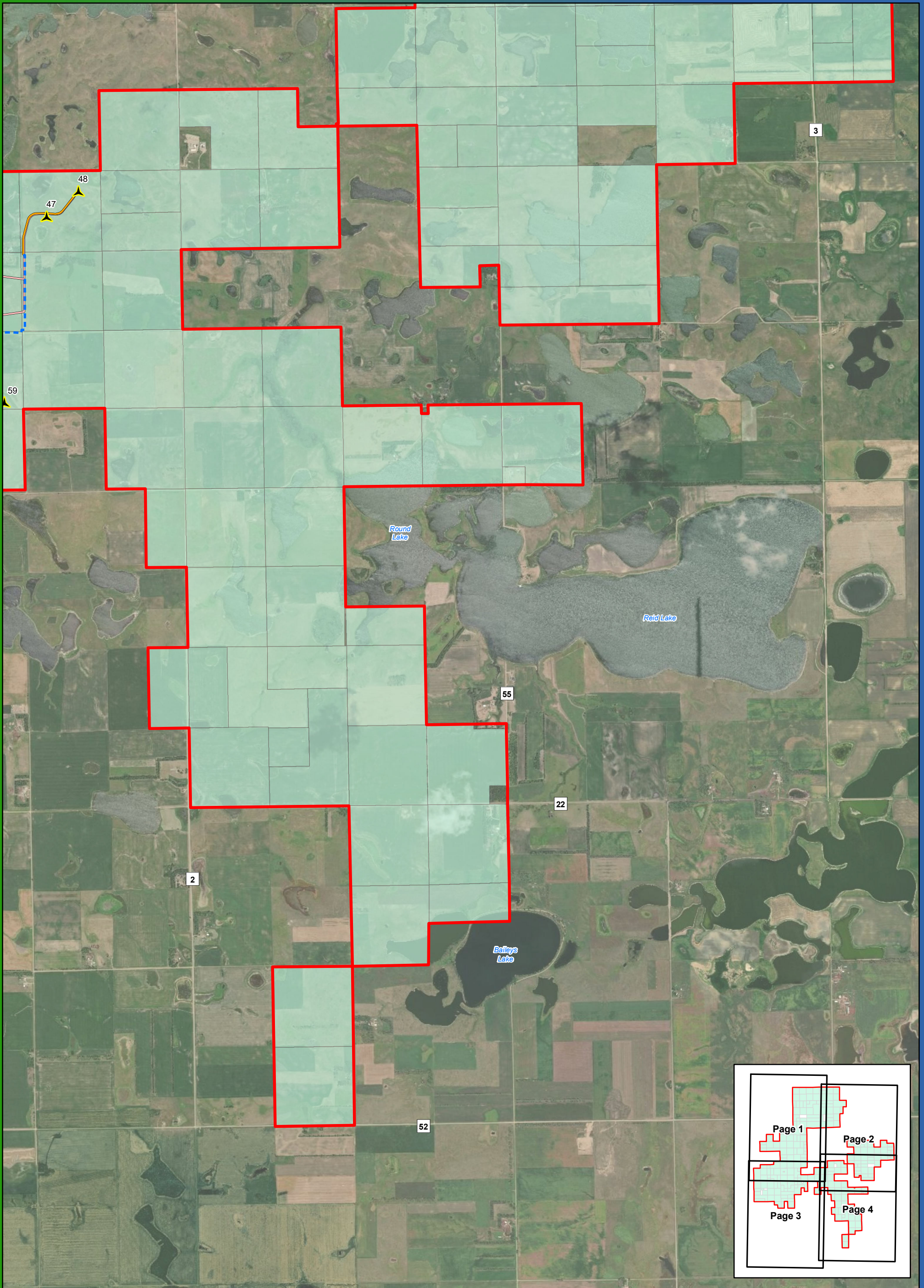


**Project Layout Map Series**

**Crocker Wind Farm  
Clark County, SD**

- Primary Turbine Location
- Alternate Turbine Location
- Project Area Boundary
- Permanent Met Tower
- ADLS Tower
- Project Substation
- O&M Facility
- Interconnect Switchyard
- Staging Area
- Interconnection 345 kV Transmission Line
- Access Road
- Alternate Access Road
- Collection Line
- Crane Path
- Participating Landowner

Note: Turbine numbering is not sequential.



**Project Layout Map Series**

**Crocker Wind Farm  
Clark County, SD**

- Primary Turbine Location
- Alternate Turbine Location
- Project Area Boundary
- Permanent Met Tower
- ADLS Tower
- Project Substation
- O&M Facility
- Interconnect Switchyard
- Staging Area
- Interconnection 345 kV Transmission Line
- Access Road
- Alternate Access Road
- Collection Line
- Crane Path
- Participating Landowner

Note: Turbine numbering is not sequential.