

- ⊕ Cemetery
- Participating Residence within 1 Mile
- Non-Participating Residence within 1 Mile
- Microwave Beam Path
- Transmission
- Pipeline
- Private Airstrip

Note:  
1. Turbines are not to scale.  
2. Turbine numbering is not sequential.  
3. Only setbacks that intersect the Project boundary are depicted.

CROCKER WIND FARM  
Clark County, SD

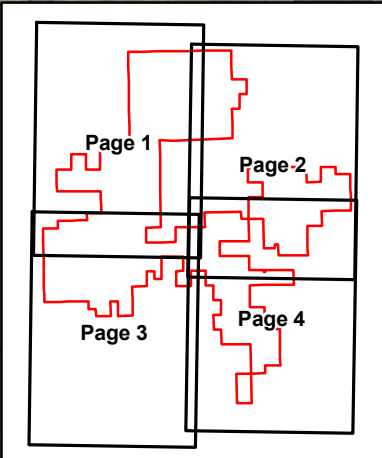
0 0.5 1 2  
Miles

Imagery Source: 2015 Color FSA  
Data Source: Geronimo Energy, MN DNR, USFWS, Census, Comsearch

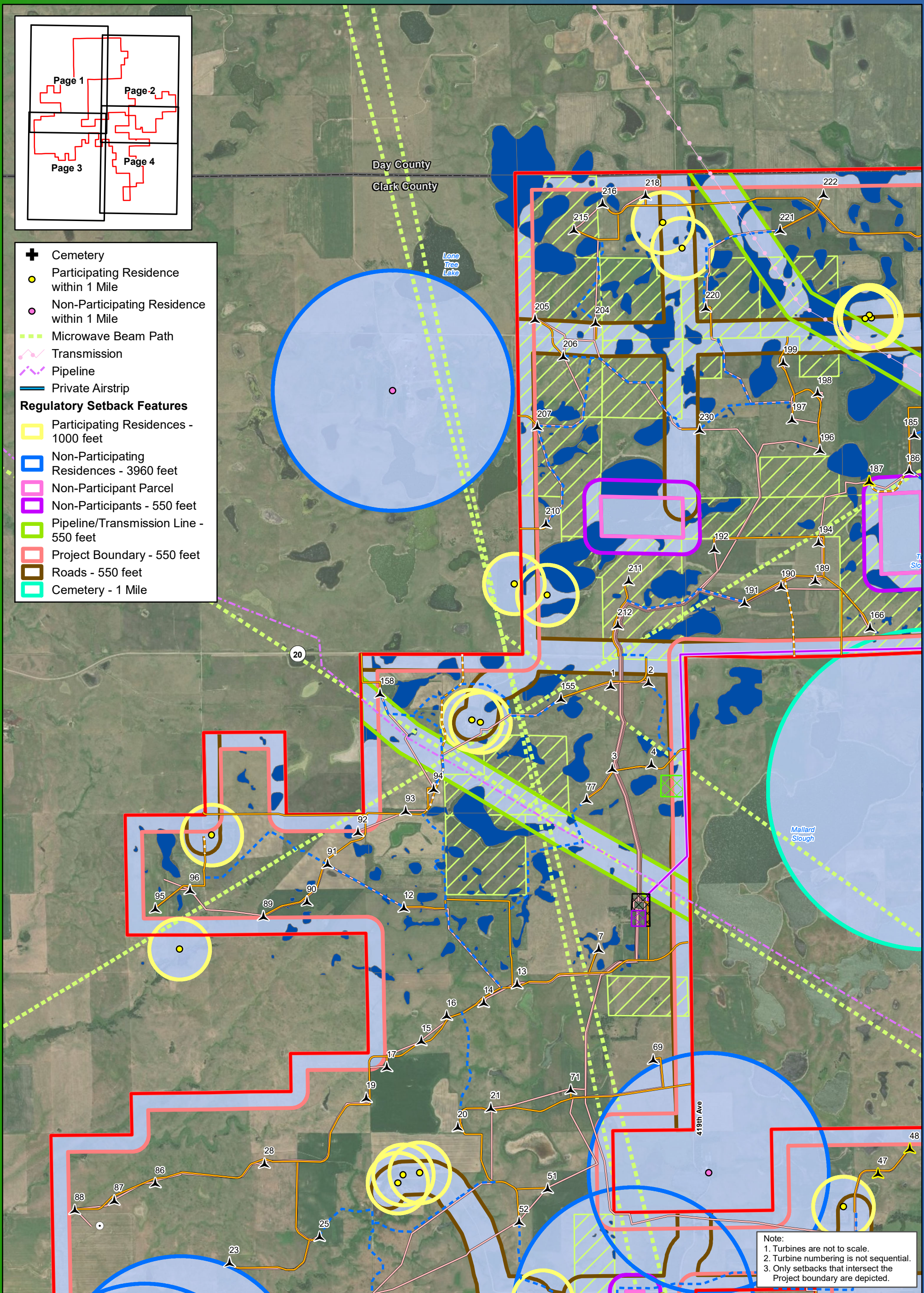
**Project Setbacks**  
**Crocker Wind Farm**  
**Clark County, SD**  
45.079602, -97.845696

- ▲ Primary Turbine Location
- ▲ Alternate Turbine Location
- Permanent Met Tower
- ADLS Tower
- ▭ Project Area Boundary
- ▭ Project Substation
- ▭ O&M Facility
- ▭ Interconnect Switchyard
- ▭ Staging Area
- Interconnection 345 kV Transmission Line
- Access Road
- Alternate Access Road
- Collection Line
- Crane Path
- Setbacks
- ▭ USFWS Grassland Easement
- ▭ USFWS Protected Basin

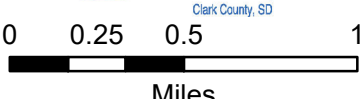




- + Cemetery
- Participating Residence within 1 Mile
- Non-Participating Residence within 1 Mile
- Microwave Beam Path
- Transmission
- Pipeline
- Private Airstrip
- Regulatory Setback Features**
- Participating Residences - 1000 feet
- Non-Participating Residences - 3960 feet
- Non-Participant Parcel
- Non-Participants - 550 feet
- Pipeline/Transmission Line - 550 feet
- Project Boundary - 550 feet
- Roads - 550 feet
- Cemetery - 1 Mile



Note:  
 1. Turbines are not to scale.  
 2. Turbine numbering is not sequential.  
 3. Only setbacks that intersect the Project boundary are depicted.

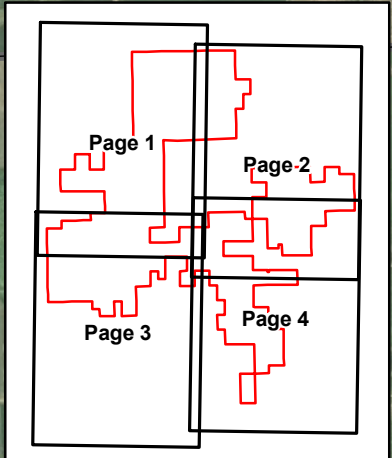
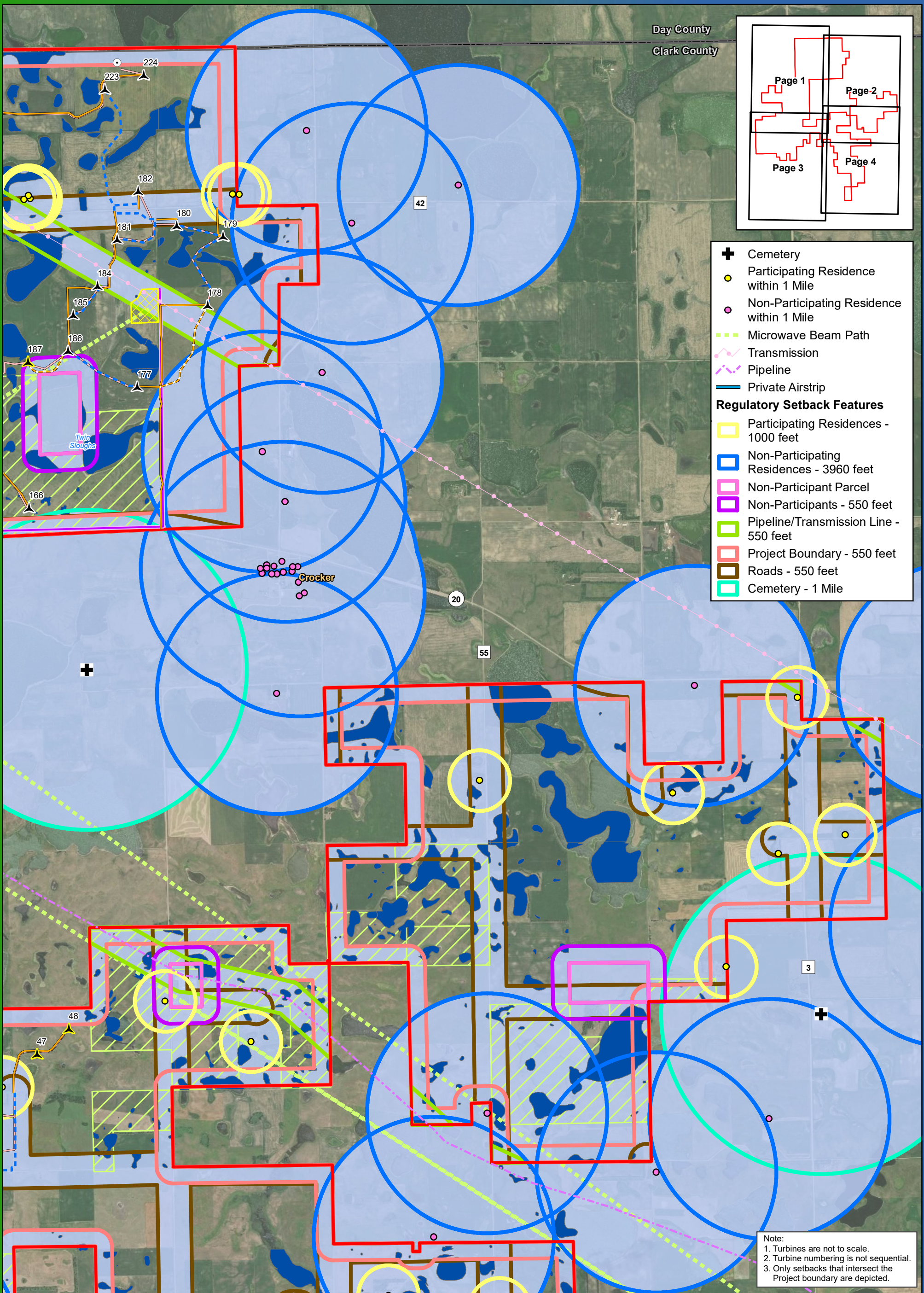


### Project Setbacks (Detailed)

## Crocker Wind Farm Clark County, SD

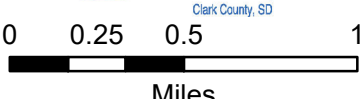
- ▲ Primary Turbine Location
- ▲ Alternate Turbine Location
- Permanent Met Tower
- ADLS Tower
- Project Area Boundary
- Project Substation
- O&M Facility
- Interconnect Switchyard
- Staging Area
- Interconnection 345 kV Transmission Line
- Access Road
- Alternate Access Road
- Collection Line
- Crane Path
- Setbacks
- USFWS Grassland Easement
- USFWS Protected Basin





- ✚ Cemetery
- Participating Residence within 1 Mile
- Non-Participating Residence within 1 Mile
- Microwave Beam Path
- Transmission
- Pipeline
- Private Airstrip
- Regulatory Setback Features**
- Participating Residences - 1000 feet
- Non-Participating Residences - 3960 feet
- Non-Participant Parcel
- Non-Participants - 550 feet
- Pipeline/Transmission Line - 550 feet
- Project Boundary - 550 feet
- Roads - 550 feet
- Cemetery - 1 Mile

Note:  
 1. Turbines are not to scale.  
 2. Turbine numbering is not sequential.  
 3. Only setbacks that intersect the Project boundary are depicted.



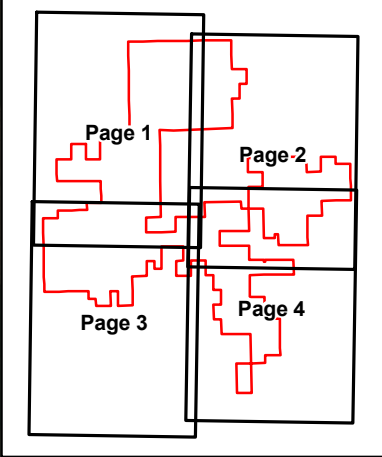
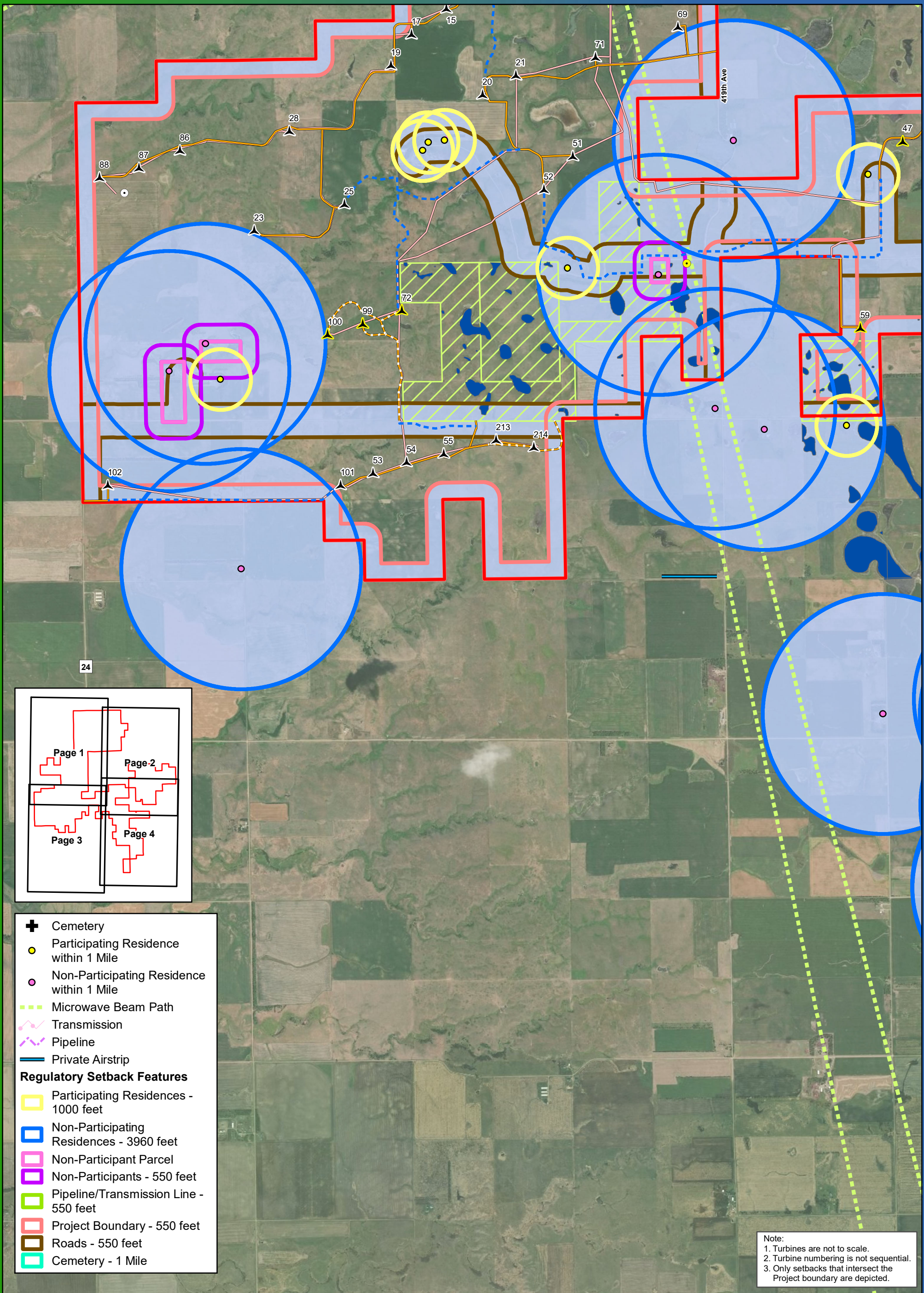
### Project Setbacks (Detailed)

## Crocker Wind Farm Clark County, SD

- ▲ Primary Turbine Location
- ▲ Alternate Turbine Location
- Permanent Met Tower
- ADLS Tower
- Project Area Boundary
- Project Substation
- O&M Facility
- Interconnect Switchyard
- Staging Area
- Interconnection 345 kV Transmission Line
- Access Road
- Alternate Access Road
- Collection Line
- Crane Path
- Setbacks
- USFWS Grassland Easement
- USFWS Protected Basin

Imagery Source: 2015 Color FSA  
 Data Source: Geronimo Energy, US Census, SD DOT





- ✚ Cemetery
- Participating Residence within 1 Mile
- Non-Participating Residence within 1 Mile
- Microwave Beam Path
- Transmission
- Pipeline
- Private Airstrip
- Regulatory Setback Features**
- Participating Residences - 1000 feet
- Non-Participating Residences - 3960 feet
- Non-Participant Parcel
- Non-Participants - 550 feet
- Pipeline/Transmission Line - 550 feet
- Project Boundary - 550 feet
- Roads - 550 feet
- Cemetery - 1 Mile

Note:  
 1. Turbines are not to scale.  
 2. Turbine numbering is not sequential.  
 3. Only setbacks that intersect the Project boundary are depicted.

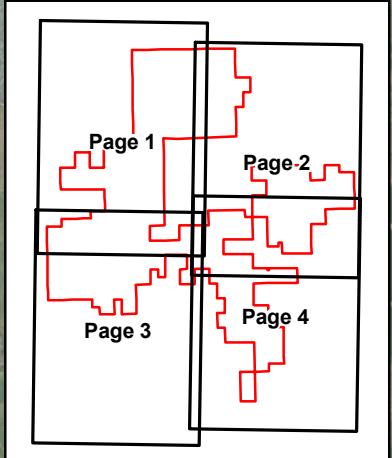
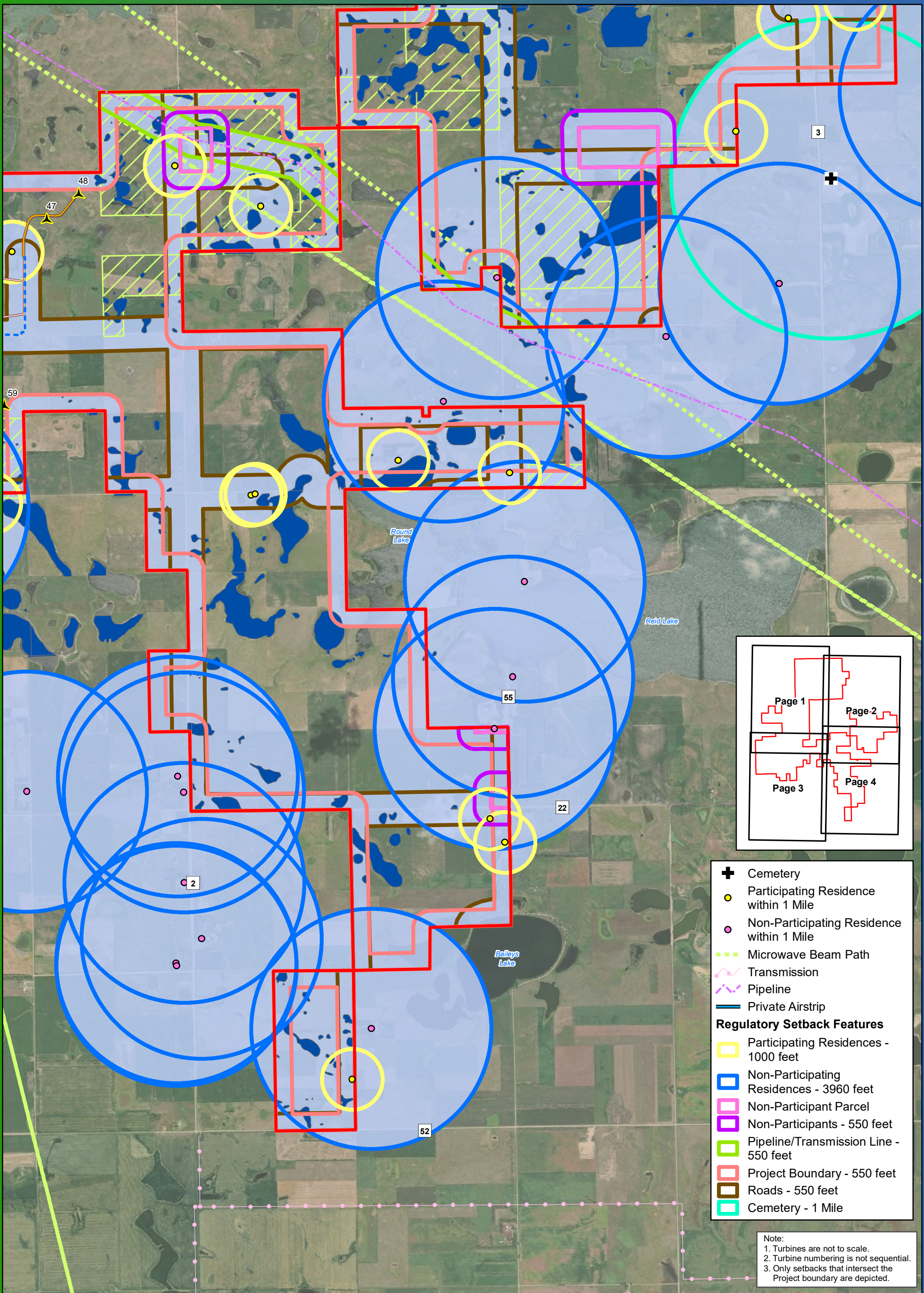


### Project Setbacks (Detailed)

## Crocker Wind Farm Clark County, SD

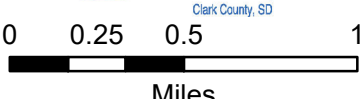
- ▲ Primary Turbine Location
- ▲ Alternate Turbine Location
- Permanent Met Tower
- ADLS Tower
- Project Area Boundary
- Project Substation
- O&M Facility
- Interconnect Switchyard
- Staging Area
- Interconnection 345 kV Transmission Line
- Access Road
- Alternate Access Road
- Collection Line
- Crane Path
- Setbacks
- USFWS Grassland Easement
- USFWS Protected Basin





- ✚ Cemetery
- Participating Residence within 1 Mile
- Non-Participating Residence within 1 Mile
- Microwave Beam Path
- Transmission
- Pipeline
- Private Airstrip
- Regulatory Setback Features**
- Participating Residences - 1000 feet
- Non-Participating Residences - 3960 feet
- Non-Participant Parcel
- Non-Participants - 550 feet
- Pipeline/Transmission Line - 550 feet
- Project Boundary - 550 feet
- Roads - 550 feet
- Cemetery - 1 Mile

Note:  
 1. Turbines are not to scale.  
 2. Turbine numbering is not sequential.  
 3. Only setbacks that intersect the Project boundary are depicted.



**Project Setbacks (Detailed)**

**Crocker Wind Farm  
Clark County, SD**

- ▲ Primary Turbine Location
- ▲ Alternate Turbine Location
- Permanent Met Tower
- ADLS Tower
- Project Area Boundary
- Project Substation
- O&M Facility
- Interconnect Switchyard
- Staging Area
- Interconnection 345 kV Transmission Line
- Access Road
- Alternate Access Road
- Collection Line
- Crane Path
- Setbacks
- USFWS Grassland Easement
- USFWS Protected Basin

Imagery Source: 2015 Color FSA  
 Data Source: Geronimo Energy, US Census, SD DOT