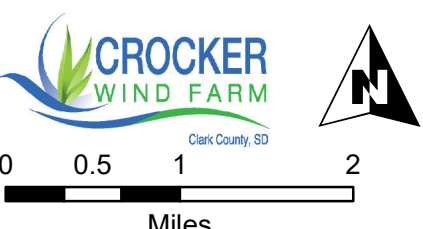


- ⊕ Cemetery
- Participating Residence within 1 Mile
- Non-Participating Residence within 1 Mile
- Microwave Beam Path
- Transmission
- Pipeline
- Private Airstrip

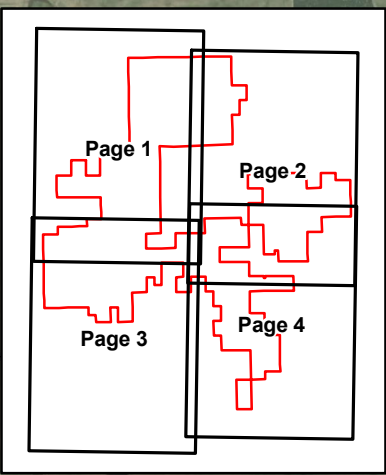
Note:
 1. Turbines are not to scale.
 2. Turbine numbering is not sequential.
 3. Only setbacks that intersect the Project boundary are depicted.



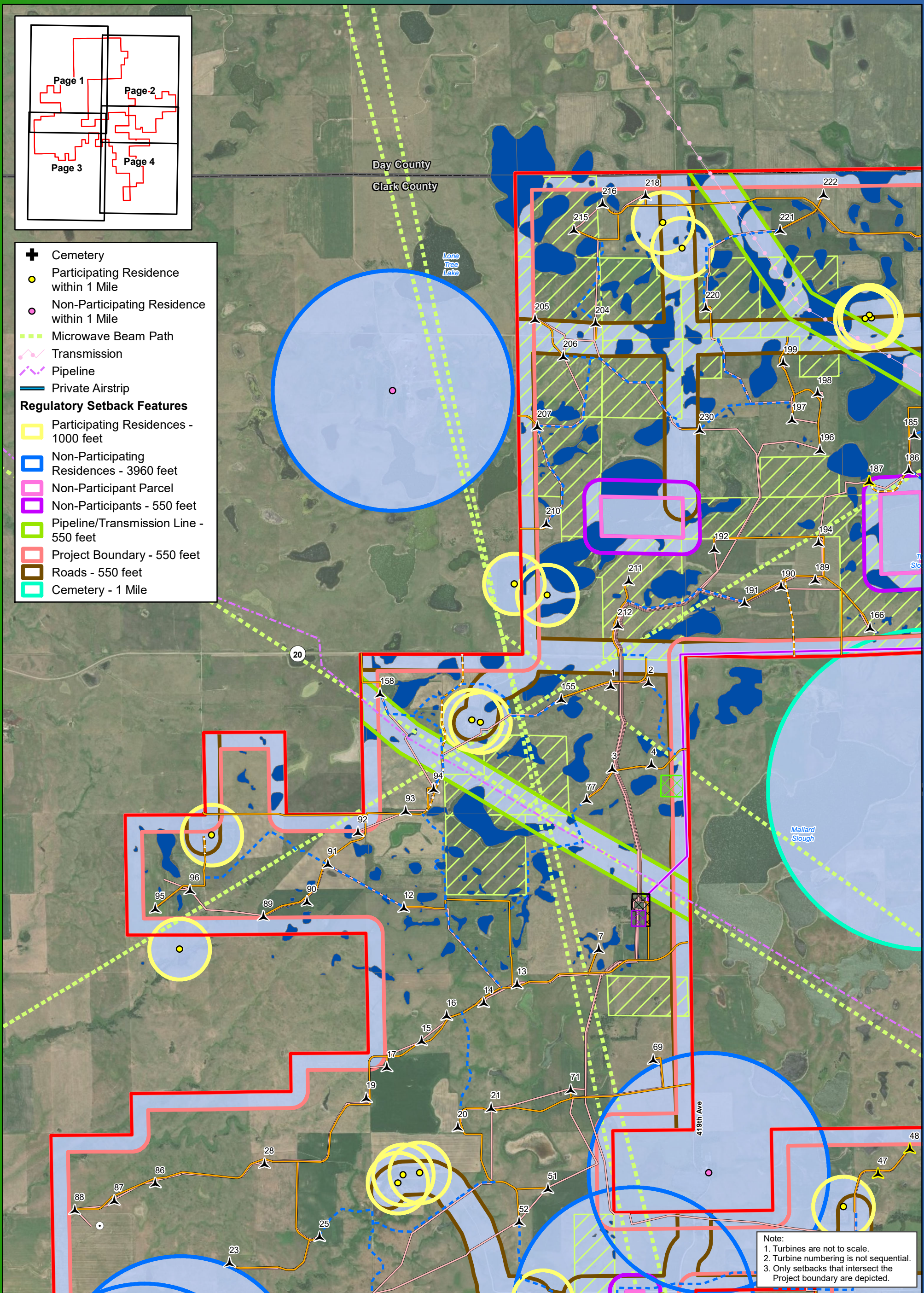
0 0.5 1 2
Miles
 Imagery Source: 2015 Color FSA
 Data Source: Geronimo Energy, MN DNR, USFWS, Census, Comsearch

Project Setbacks
Crocker Wind Farm
Clark County, SD
 45.079602, -97.845696

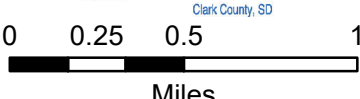
- ▲ Primary Turbine Location
- ▲ Alternate Turbine Location
- Permanent Met Tower
- ADLS Tower
- Project Area Boundary
- ▣ Project Substation
- ▣ O&M Facility
- ▣ Interconnect Switchyard
- ▣ Staging Area
- Interconnection 345 kV Transmission Line
- Access Road
- Alternate Access Road
- Collection Line
- Crane Path
- Setbacks
- ▣ USFWS Grassland Easement
- ▣ USFWS Protected Basin



- + Cemetery
- Participating Residence within 1 Mile
- Non-Participating Residence within 1 Mile
- Microwave Beam Path
- Transmission
- Pipeline
- Private Airstrip
- Regulatory Setback Features**
- Participating Residences - 1000 feet
- Non-Participating Residences - 3960 feet
- Non-Participant Parcel
- Non-Participants - 550 feet
- Pipeline/Transmission Line - 550 feet
- Project Boundary - 550 feet
- Roads - 550 feet
- Cemetery - 1 Mile



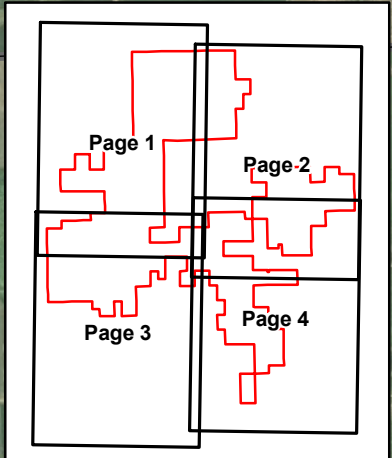
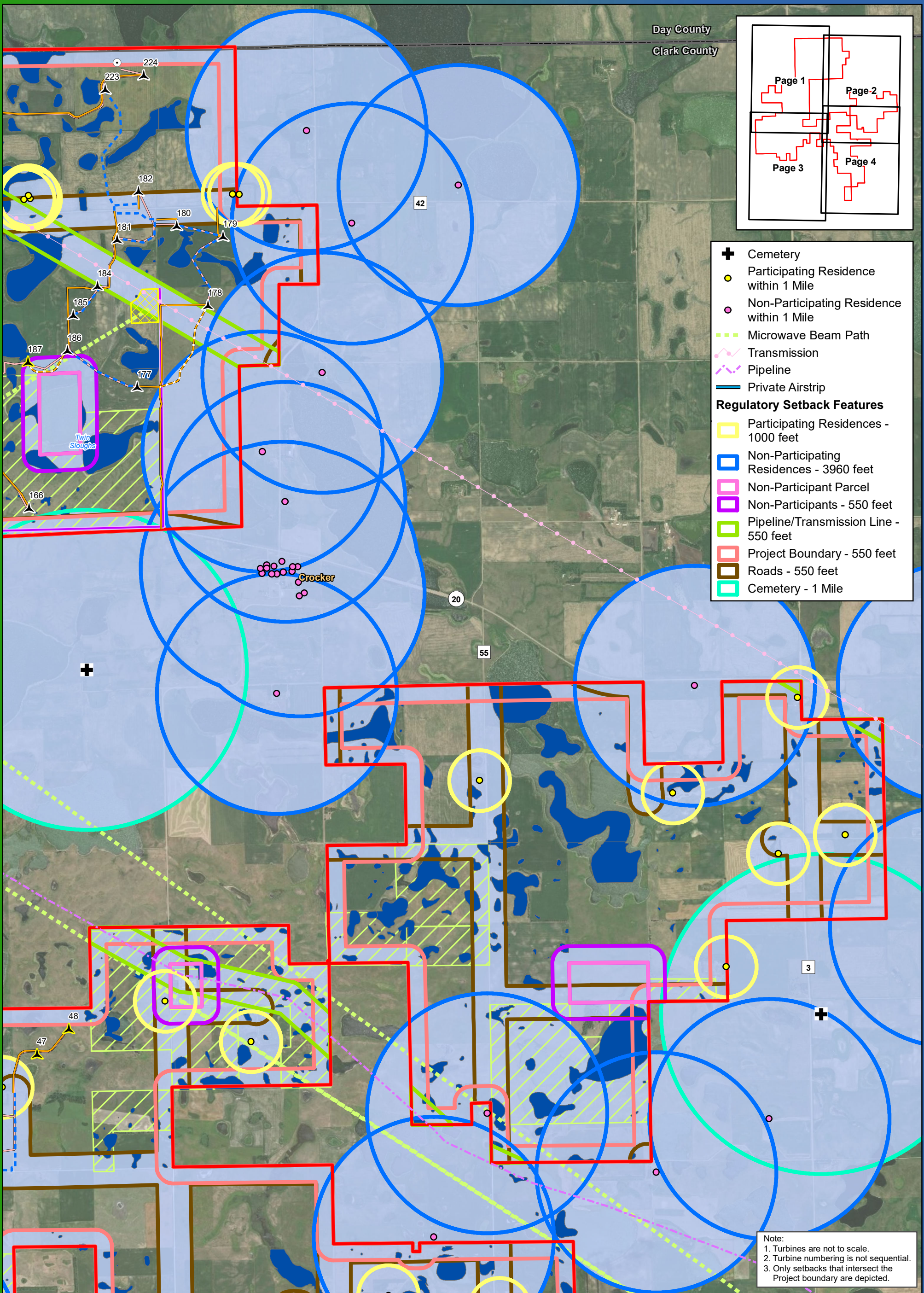
Note:
 1. Turbines are not to scale.
 2. Turbine numbering is not sequential.
 3. Only setbacks that intersect the Project boundary are depicted.



Project Setbacks (Detailed)

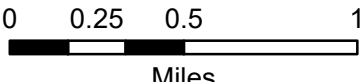
Crocker Wind Farm Clark County, SD

- ▲ Primary Turbine Location
- Interconnection 345 kV Transmission Line
- ▲ Alternate Turbine Location
- Access Road
- Permanent Met Tower
- Alternate Access Road
- ADLS Tower
- Collection Line
- Project Area Boundary
- Crane Path
- Project Substation
- Setbacks
- O&M Facility
- USFWS Grassland Easement
- Interconnect Switchyard
- USFWS Protected Basin
- Staging Area



- ✚ Cemetery
- Participating Residence within 1 Mile
- Non-Participating Residence within 1 Mile
- Microwave Beam Path
- Transmission
- Pipeline
- Private Airstrip
- Regulatory Setback Features**
- Participating Residences - 1000 feet
- Non-Participating Residences - 3960 feet
- Non-Participant Parcel
- Non-Participants - 550 feet
- Pipeline/Transmission Line - 550 feet
- Project Boundary - 550 feet
- Roads - 550 feet
- Cemetery - 1 Mile

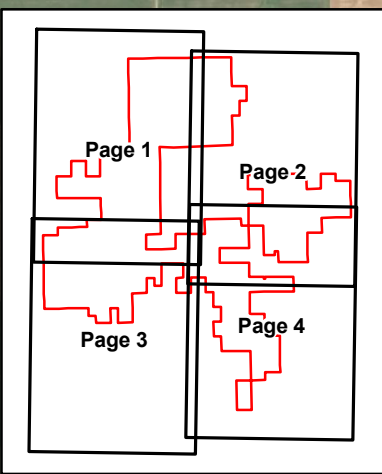
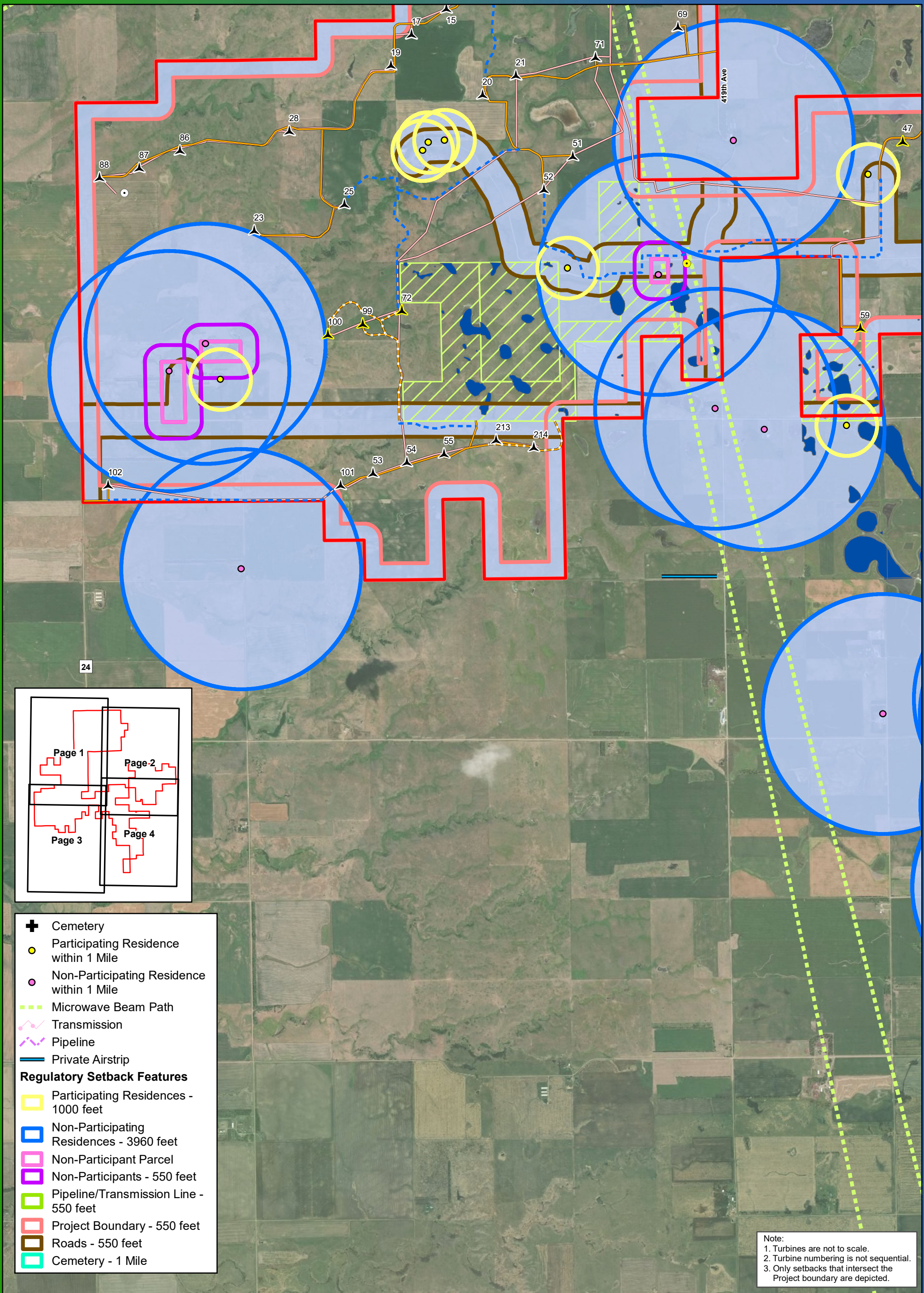
Note:
 1. Turbines are not to scale.
 2. Turbine numbering is not sequential.
 3. Only setbacks that intersect the Project boundary are depicted.



Project Setbacks (Detailed)

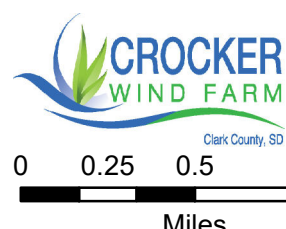
**Crocker Wind Farm
Clark County, SD**

- ▲ Primary Turbine Location
- ▲ Alternate Turbine Location
- Permanent Met Tower
- ADLS Tower
- Project Area Boundary
- Project Substation
- O&M Facility
- Interconnect Switchyard
- Staging Area
- Interconnection 345 kV Transmission Line
- Access Road
- Alternate Access Road
- Collection Line
- Crane Path
- Setbacks
- USFWS Grassland Easement
- USFWS Protected Basin



- ✚ Cemetery
- Participating Residence within 1 Mile
- Non-Participating Residence within 1 Mile
- Microwave Beam Path
- Transmission
- Pipeline
- Private Airstrip
- Regulatory Setback Features**
- Participating Residences - 1000 feet
- Non-Participating Residences - 3960 feet
- Non-Participant Parcel
- Non-Participants - 550 feet
- Pipeline/Transmission Line - 550 feet
- Project Boundary - 550 feet
- Roads - 550 feet
- Cemetery - 1 Mile

Note:
 1. Turbines are not to scale.
 2. Turbine numbering is not sequential.
 3. Only setbacks that intersect the Project boundary are depicted.

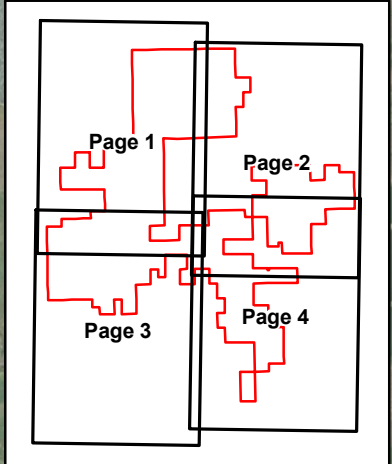
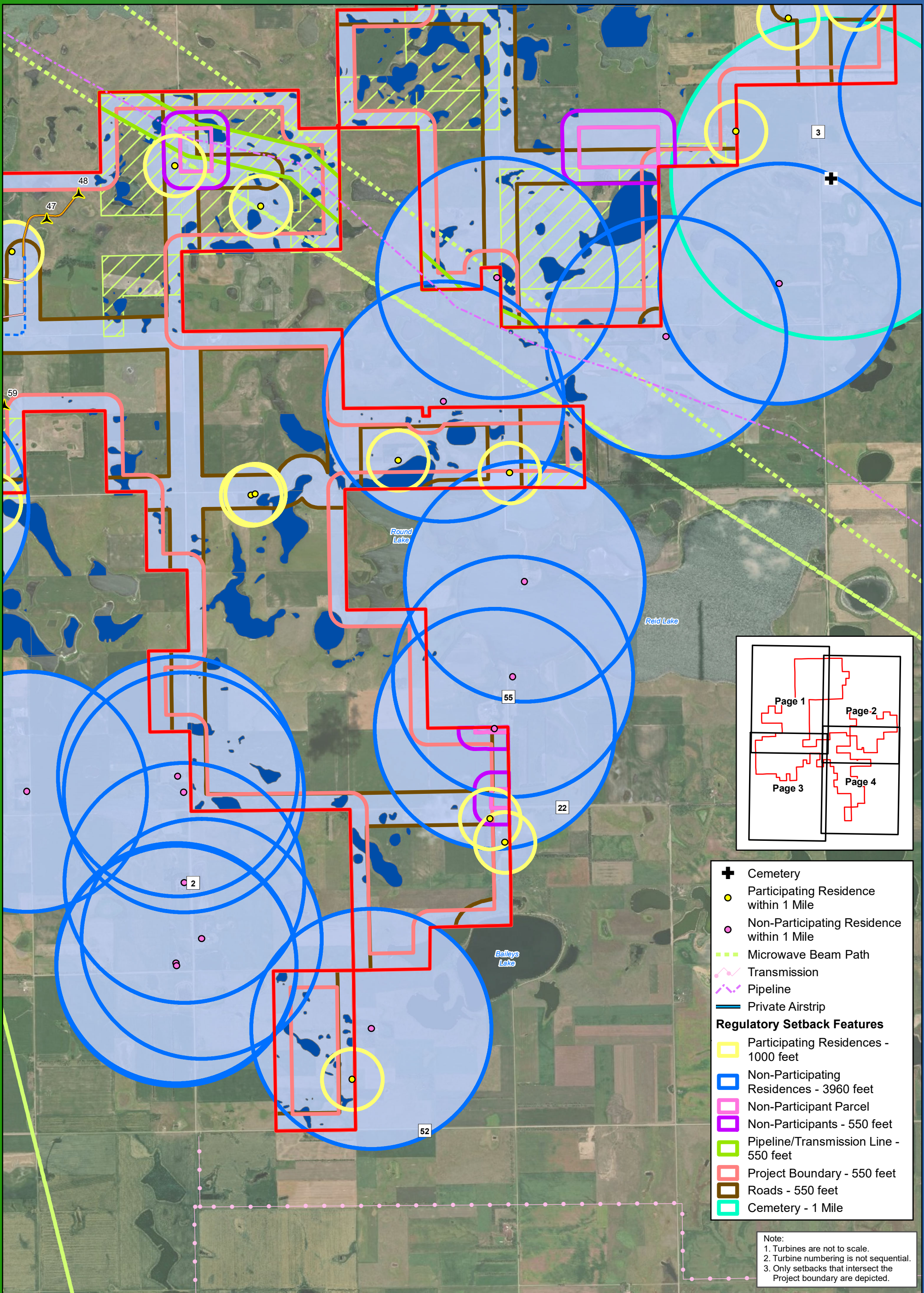


Project Setbacks (Detailed)

Crocker Wind Farm Clark County, SD

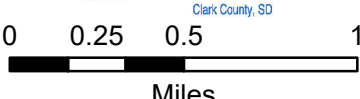
- ▲ Primary Turbine Location
- ▲ Alternate Turbine Location
- Permanent Met Tower
- ADLS Tower
- Project Area Boundary
- Project Substation
- O&M Facility
- Interconnect Switchyard
- Staging Area
- Interconnection 345 kV Transmission Line
- Access Road
- Alternate Access Road
- Collection Line
- Crane Path
- Setbacks
- USFWS Grassland Easement
- USFWS Protected Basin

Imagery Source: 2015 Color FSA
 Data Source: Geronimo Energy, US Census, SD DOT



- ✚ Cemetery
- Participating Residence within 1 Mile
- Non-Participating Residence within 1 Mile
- Microwave Beam Path
- Transmission
- Pipeline
- Private Airstrip
- Regulatory Setback Features**
- Participating Residences - 1000 feet
- Non-Participating Residences - 3960 feet
- Non-Participant Parcel
- Non-Participants - 550 feet
- Pipeline/Transmission Line - 550 feet
- Project Boundary - 550 feet
- Roads - 550 feet
- Cemetery - 1 Mile

Note:
 1. Turbines are not to scale.
 2. Turbine numbering is not sequential.
 3. Only setbacks that intersect the Project boundary are depicted.



Project Setbacks (Detailed)

**Crocker Wind Farm
Clark County, SD**

- ▲ Primary Turbine Location
- ▲ Alternate Turbine Location
- Permanent Met Tower
- ADLS Tower
- Project Area Boundary
- Project Substation
- O&M Facility
- Interconnect Switchyard
- Staging Area
- Interconnection 345 kV Transmission Line
- Access Road
- Alternate Access Road
- Collection Line
- Crane Path
- Setbacks
- USFWS Grassland Easement
- USFWS Protected Basin

Imagery Source: 2015 Color FSA
 Data Source: Geronimo Energy, US Census, SD DOT