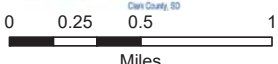
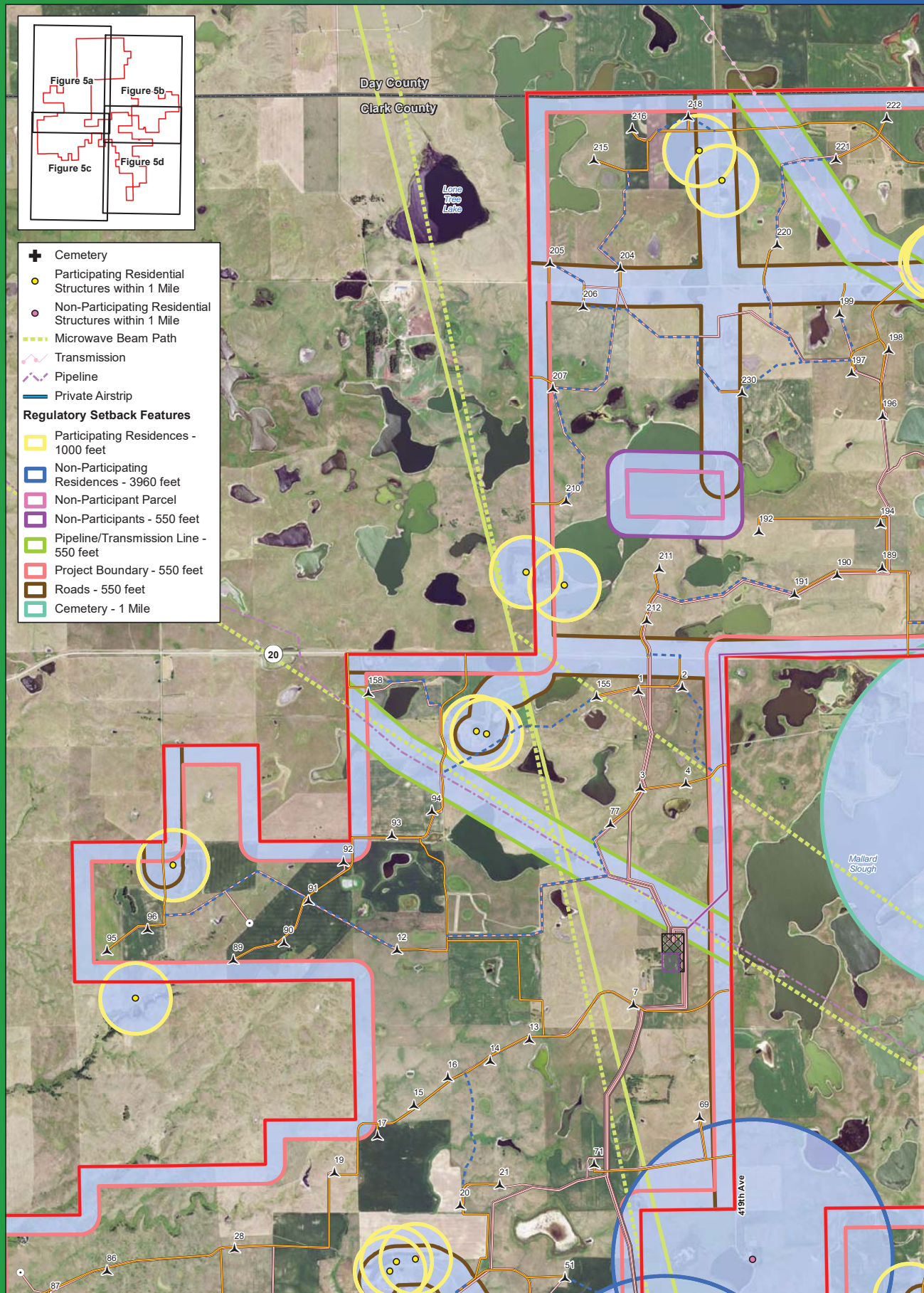


- + Cemetery
- Participating Residential Structures within 1 Mile
- Non-Participating Residential Structures within 1 Mile
- Microwave Beam Path
- Transmission
- Pipeline
- Private Airstrip
- Regulatory Setback Features**
- Participating Residences - 1000 feet
- Non-Participating Residences - 3960 feet
- Non-Participant Parcel
- Non-Participants - 550 feet
- Pipeline/Transmission Line - 550 feet
- Project Boundary - 550 feet
- Roads - 550 feet
- Cemetery - 1 Mile



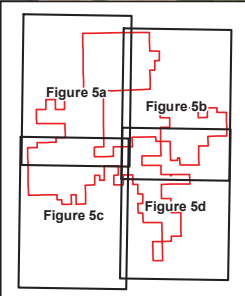
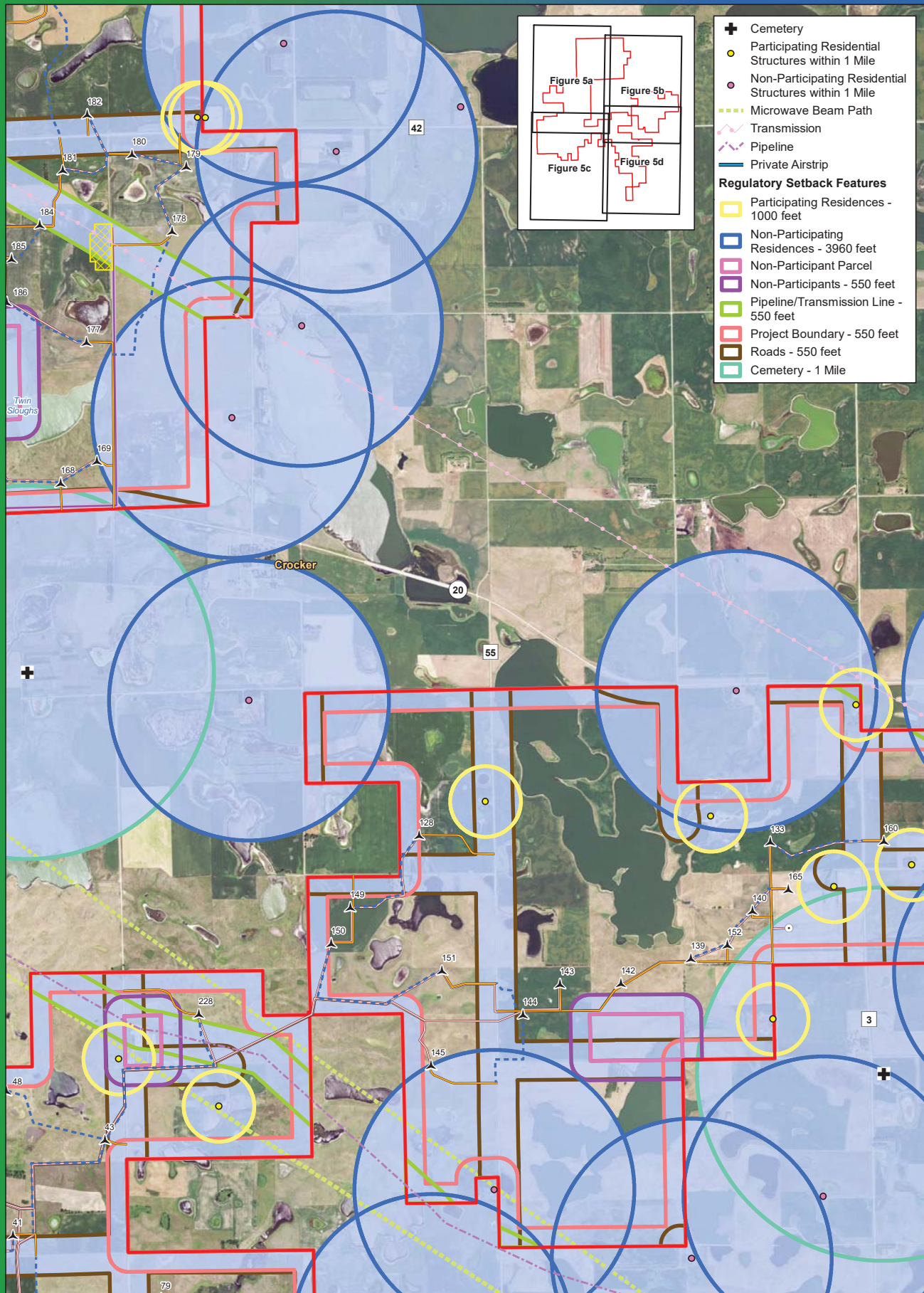
**Figure 5a  
Project Setbacks (Detailed)**

**Crocker Wind Farm  
Clark County, SD  
45.079602, -97.845696**

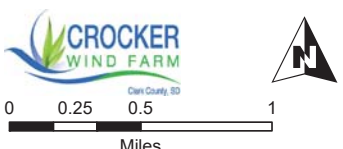
- ▲ Preliminary Turbine Location
  - Interconnect 345 kV Transmission Line
  - Preliminary Permanent Met Tower
  - Preliminary Access Road
  - Project Area Boundary
  - Preliminary Collection Line
  - Project Substation
  - Preliminary Crane Path
  - O&M Facility
  - Setbacks
  - Interconnect Switchyard
  - 
  - Preliminary Staging Area
  -
- Note:**  
1. Turbine numbering is not sequential.  
2. Only setbacks that intersect the Project boundary are depicted.

Imagery Source: 2015 Color FSA  
Data Source: Geronimo Energy, US Census, SD DOT





- ✚ Cemetery
  - Participating Residential Structures within 1 Mile
  - Non-Participating Residential Structures within 1 Mile
  - Microwave Beam Path
  - Transmission
  - Pipeline
  - Private Airstrip
- Regulatory Setback Features**
- Participating Residences - 1000 feet
  - Non-Participating Residences - 3960 feet
  - Non-Participant Parcel
  - Non-Participants - 550 feet
  - Pipeline/Transmission Line - 550 feet
  - Project Boundary - 550 feet
  - Roads - 550 feet
  - Cemetery - 1 Mile

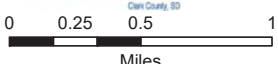
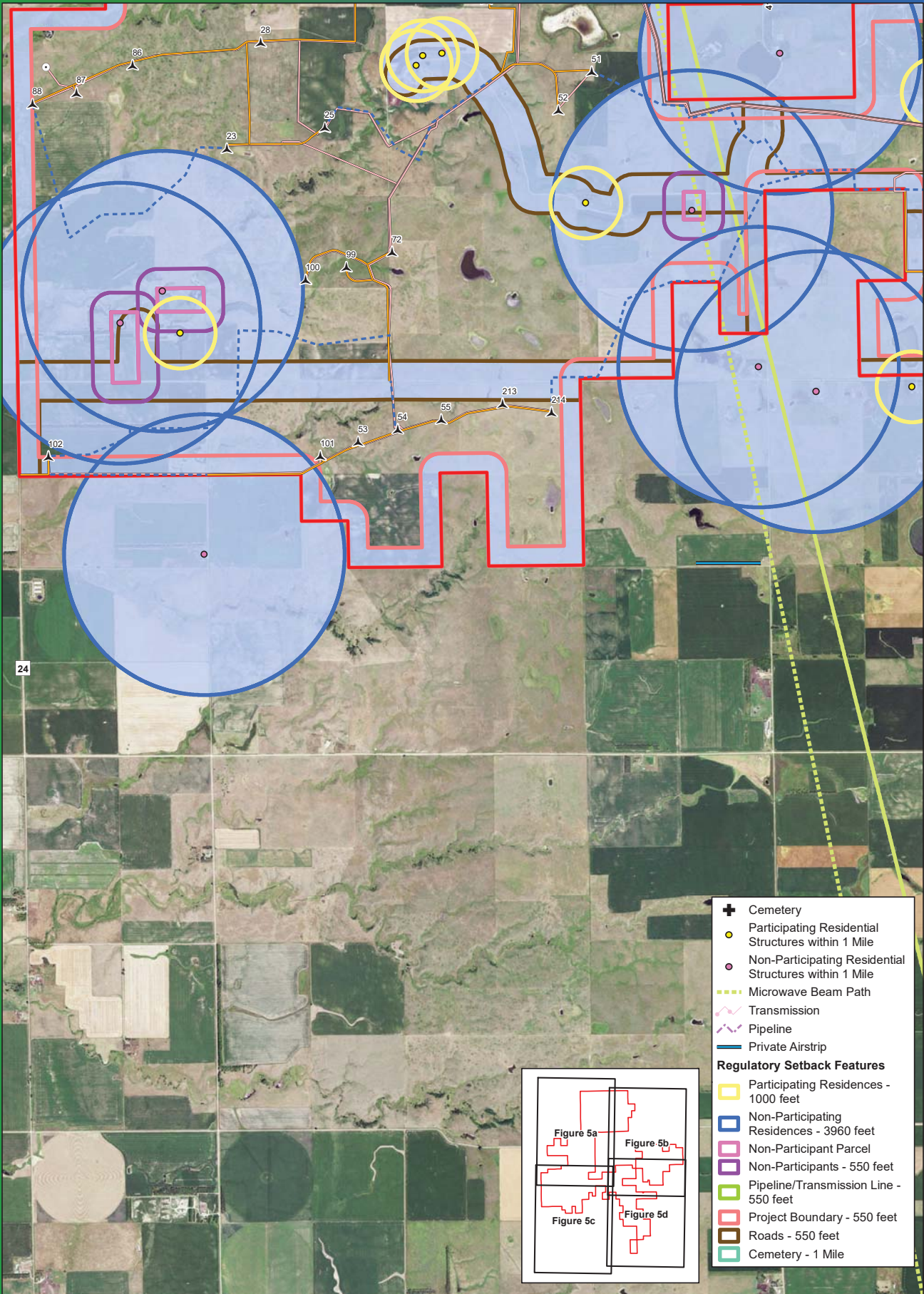


**Figure 5b**  
**Project Setbacks (Detailed)**

**Crocker Wind Farm**  
**Clark County, SD**  
**45.079602, -97.845696**

- ▲ Preliminary Turbine Location
  - Preliminary Permanent Met Tower
  - Project Area Boundary
  - Project Substation
  - O&M Facility
  - Interconnect Switchyard
  - Preliminary Staging Area
  - Interconnection 345 kV Transmission Line
  - Preliminary Access Road
  - Preliminary Collection Line
  - Preliminary Crane Path
  - Setbacks
- Note:  
 1. Turbine numbering is not sequential.  
 2. Only setbacks that intersect the Project boundary are depicted.





Imagery Source: 2015 Color FSA  
Data Source: Geronimo Energy, US Census, SD DOT

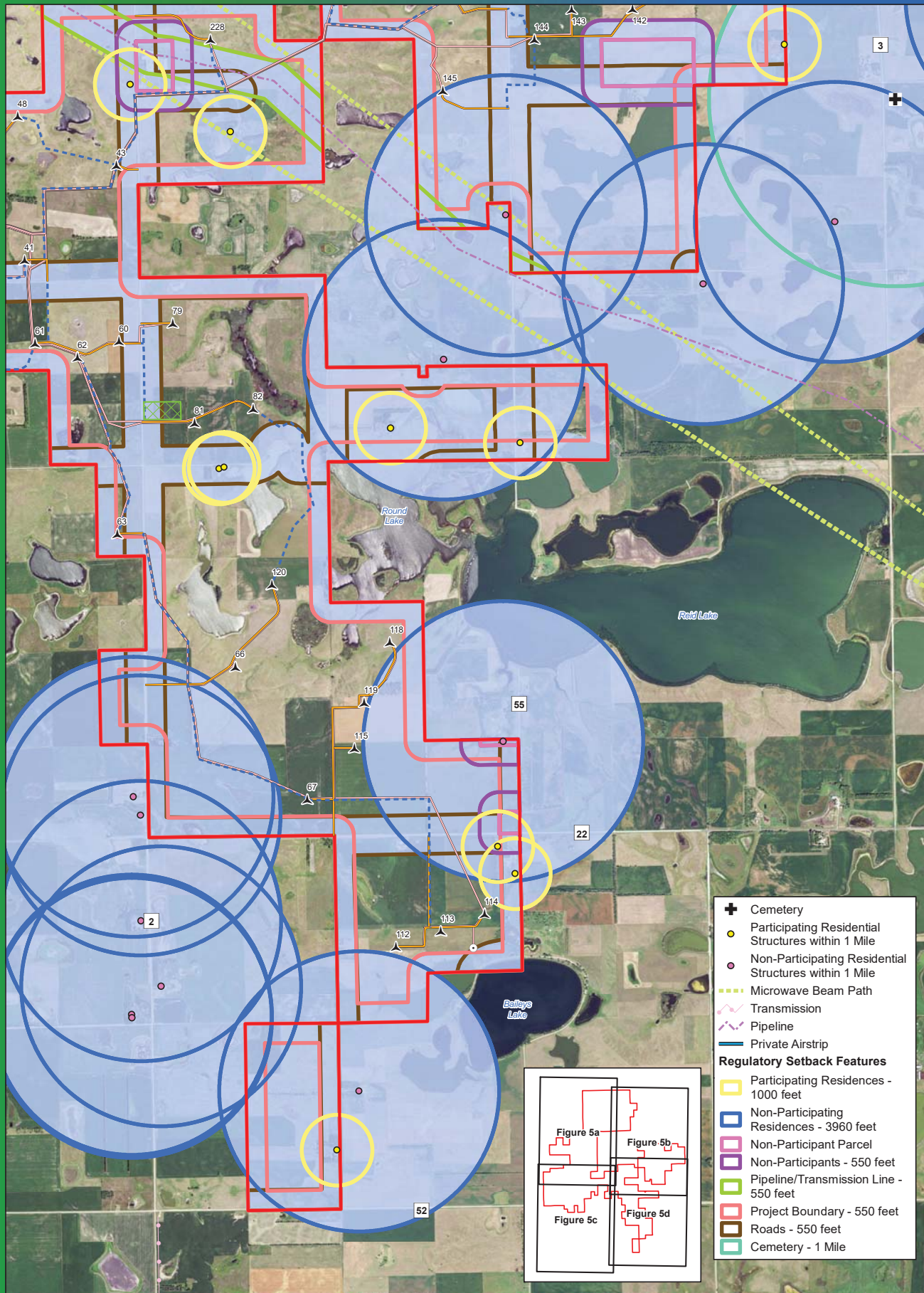
**Figure 5c  
Project Setbacks (Detailed)**

**Crocker Wind Farm  
Clark County, SD  
45.079602, -97.845696**

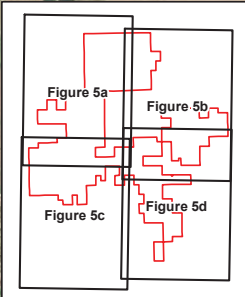
- ▲ Preliminary Turbine Location
- Preliminary Permanent Met Tower
- Project Area Boundary
- Project Substation
- O&M Facility
- Interconnect Switchyard
- Preliminary Staging Area
- Interconnection 345 kV Transmission Line
- Preliminary Access Road
- Preliminary Collection Line
- Preliminary Crane Path
- Setbacks

Note:  
1. Turbine numbering is not sequential.  
2. Only setbacks that intersect the Project boundary are depicted.





- ✚ Cemetery
- Participating Residential Structures within 1 Mile
- Non-Participating Residential Structures within 1 Mile
- Microwave Beam Path
- Transmission
- Pipeline
- Private Airstrip
- Regulatory Setback Features**
- Participating Residences - 1000 feet
- Non-Participating Residences - 3960 feet
- Non-Participant Parcel
- Non-Participants - 550 feet
- Pipeline/Transmission Line - 550 feet
- Project Boundary - 550 feet
- Roads - 550 feet
- Cemetery - 1 Mile



0 0.25 0.5 1  
Miles

**Figure 5d**  
**Project Setbacks (Detailed)**  
**Crocker Wind Farm**  
**Clark County, SD**  
**45.079602, -97.845696**

- ▲ Preliminary Turbine Location
- Preliminary Permanent Met Tower
- Project Area Boundary
- Project Substation
- O&M Facility
- Interconnect Switchyard
- Preliminary Staging Area
- Interconnection 345 kV Transmission Line
- Preliminary Access Road
- Preliminary Collection Line
- Preliminary Crane Path
- Setbacks

Note:  
1. Turbine numbering is not sequential.  
2. Only setbacks that intersect the Project boundary are depicted.