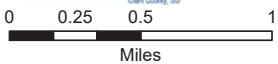
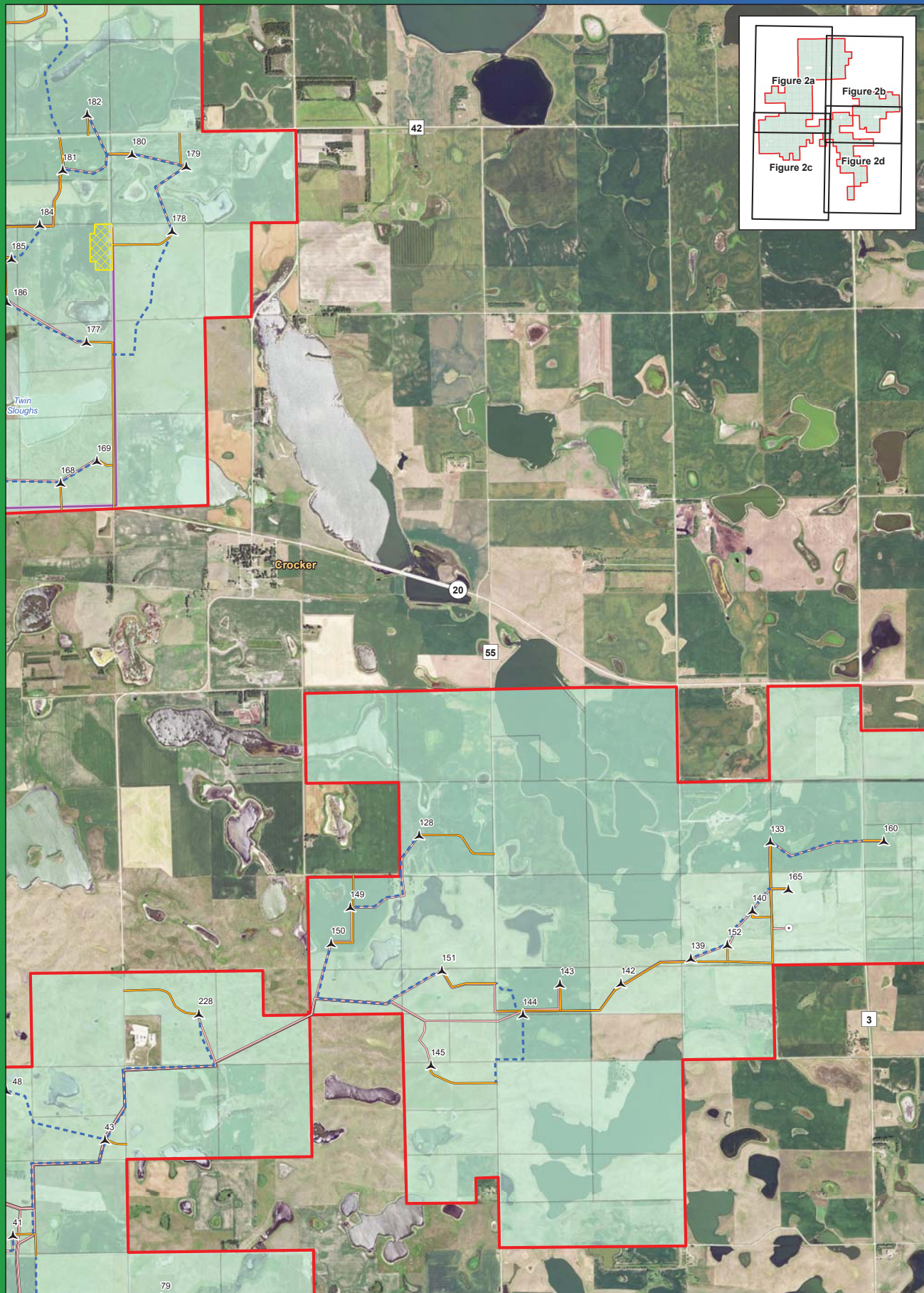
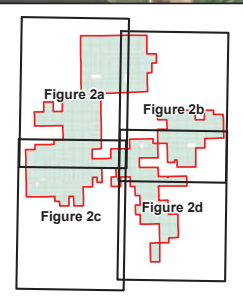


Figure 2a
Project Layout Map Series

Crocker Wind Farm
Clark County, SD
45.079602, -97.845696

- Preliminary Turbine Location
- Temporary Met Tower
- Preliminary Permanent Met Tower
- Project Area Boundary
- Project Substation
- O&M Facility
- Interconnect Switchyard
- Preliminary Staging Area
- Interconnection 345 kV Transmission Line
- Preliminary Collection Line
- Preliminary Access Road
- Preliminary Crane Path
- Participating Landowner

Note: Turbine numbering is not sequential.



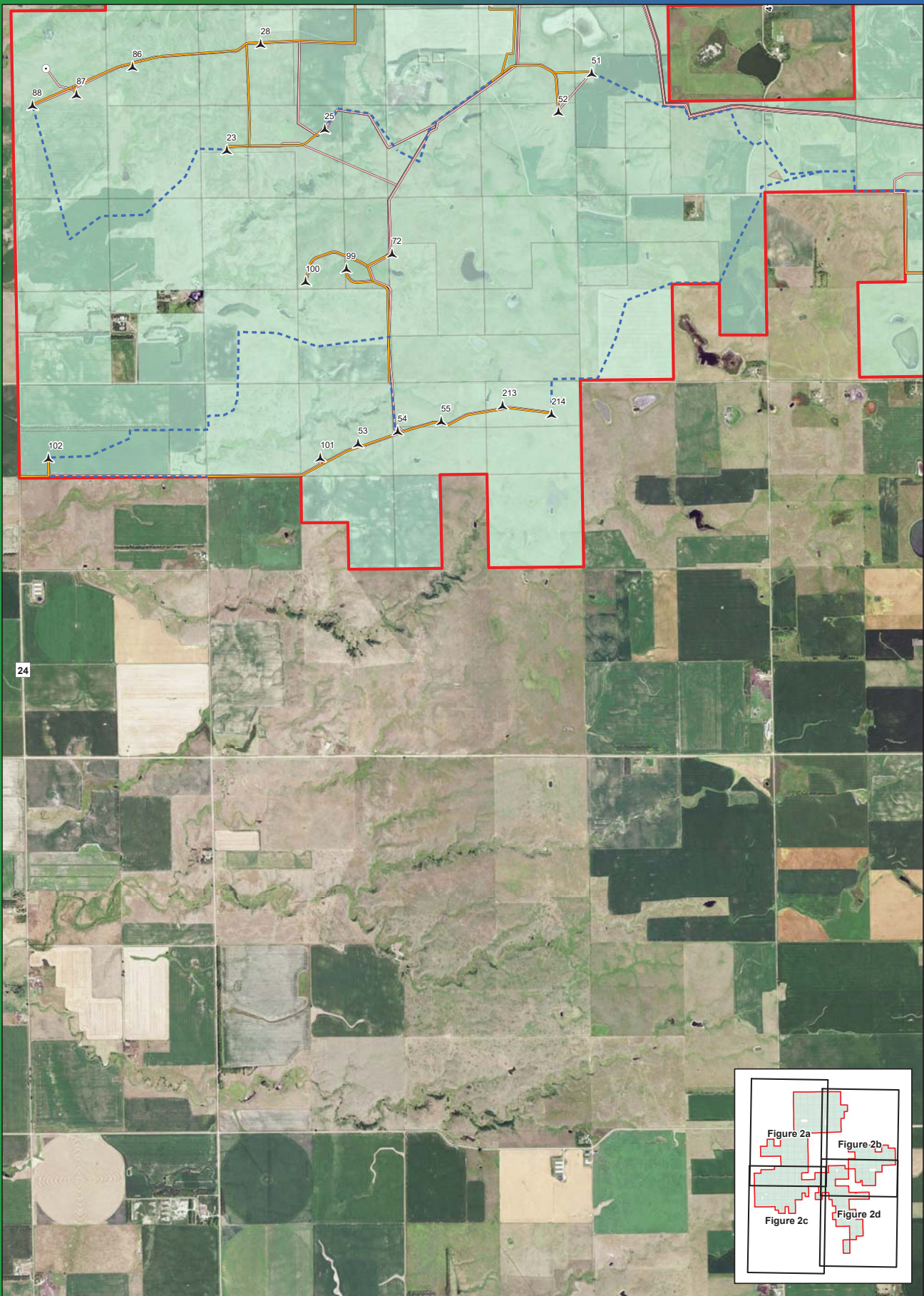
Imagery Source: 2015 Color FSA
Data Source: Geronimo Energy, US Census, SD DOT

Figure 2b Project Layout Map Series

Crocker Wind Farm
Clark County, SD
45.079602, -97.845696

- Preliminary Turbine Location
- Temporary Met Tower
- Preliminary Permanent Met Tower
- Project Area Boundary
- Project Substation
- O&M Facility
- Interconnect Switchyard
- Preliminary Staging Area
- Interconnection 345 kV Transmission Line
- Preliminary Collection Line
- Preliminary Access Road
- Preliminary Crane Path
- Participating Landowner

Note: Turbine numbering is not sequential.



0 0.25 0.5 1
Miles



Figure 2c Project Layout Map Series

Crocker Wind Farm
Clark County, SD
45.079602, -97.845696

- Preliminary Turbine Location
- Temporary Met Tower
- Preliminary Permanent Met Tower
- Project Area Boundary
- Project Substation
- O&M Facility
- Interconnect Switchyard
- Preliminary Staging Area
- Interconnection 345 kV Transmission Line
- Preliminary Collection Line
- Preliminary Access Road
- Preliminary Crane Path
- Participating Landowner

Note: Turbine numbering is not sequential.

