

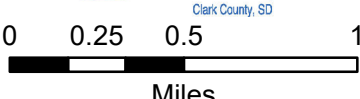
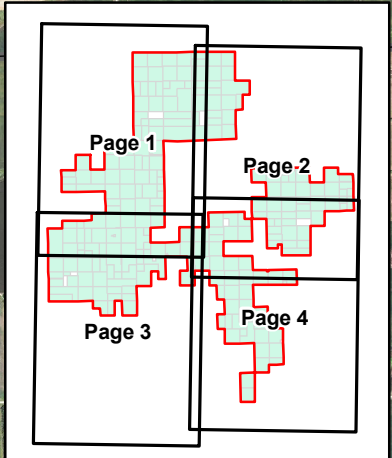
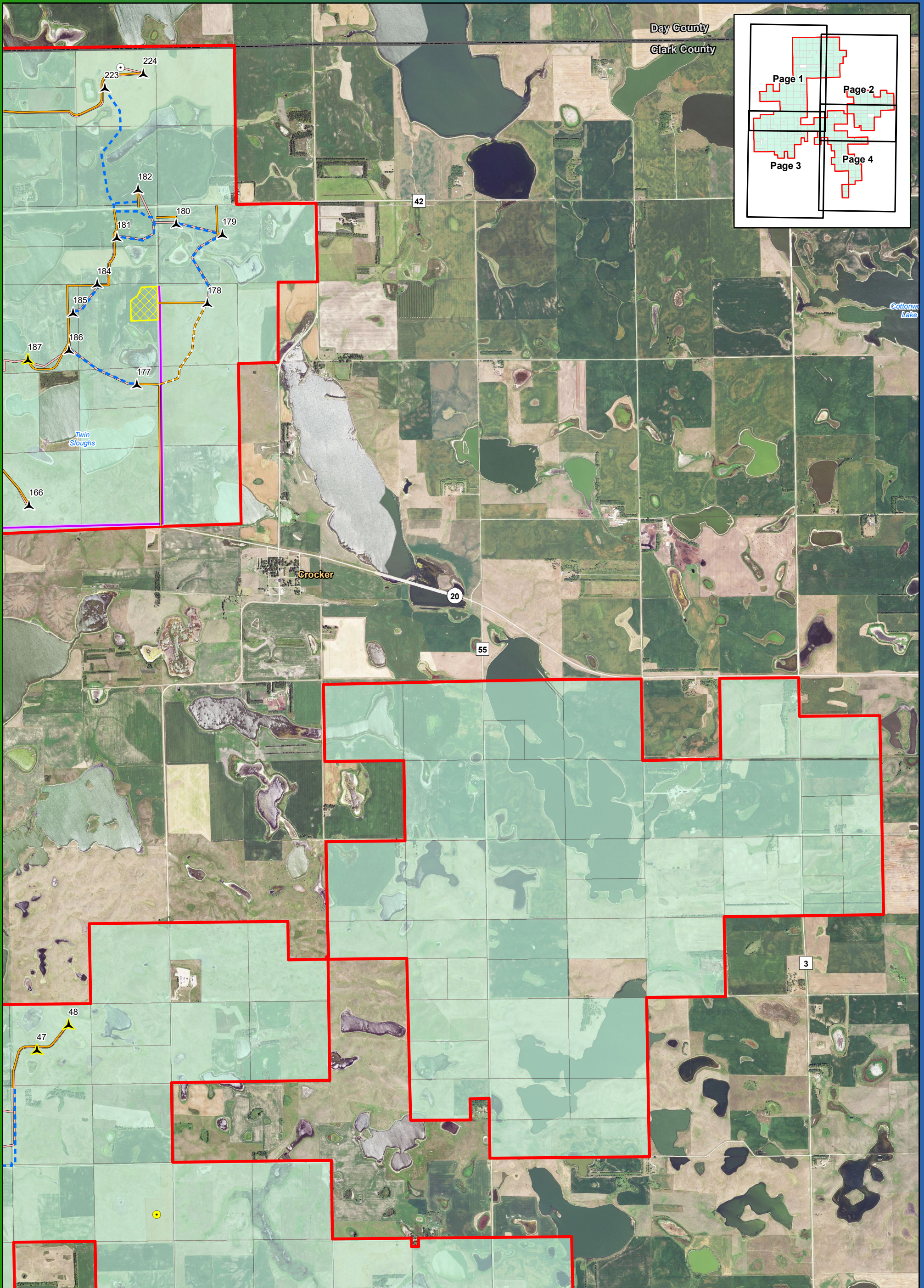
**Project Layout**  
**Crocker Wind Farm**  
**Clark County, SD**  
**45.079602, -97.845696**

- ▲ Primary Turbine Location
- ▲ Alternate Turbine Location
- Permanent Met Tower
- Temporary Met Tower
- ▭ Project Area Boundary
- ▭ Project Substation
- ▭ O&M Facility
- ▭ Interconnect Switchyard
- ▭ Staging Area
- Interconnection 345 KV Transmission Line
- Access Road
- Alternate Access Road
- Collection Line
- Crane Path
- Participating Landowner

Note: Turbine numbering is not sequential.

Imagery Source: 2015 Color FSA  
Data Source: Geronimo Energy, US Census, SD DOT





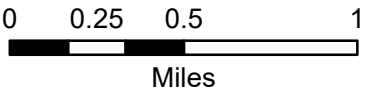
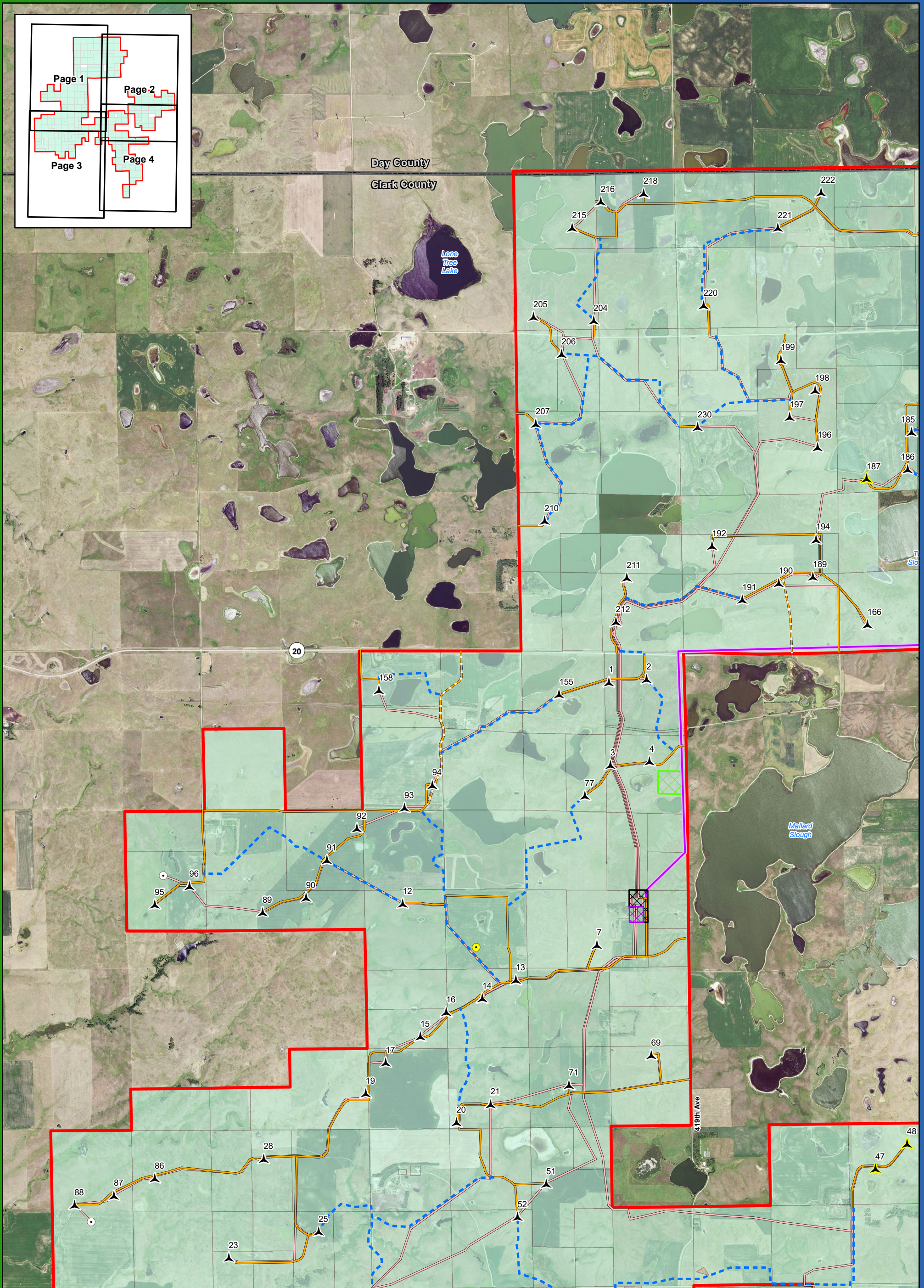
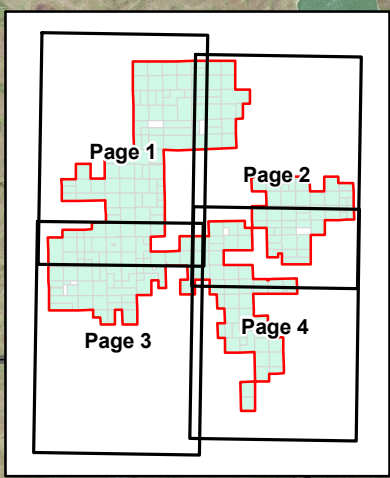
**Project Layout Map Series**

**Crocker Wind Farm  
Clark County, SD**

- ▲ Primary Turbine Location
- ▲ Alternate Turbine Location
- Permanent Met Tower
- Temporary Met Tower
- ▭ Project Area Boundary
- ▭ Project Substation
- ▭ O&M Facility
- ▭ Interconnect Switchyard
- ▭ Staging Area
- Interconnection 345 kV Transmission Line
- Access Road
- Alternate Access Road
- Collection Line
- Crane Path
- ▭ Participating Landowner

Note: Turbine numbering is not sequential.





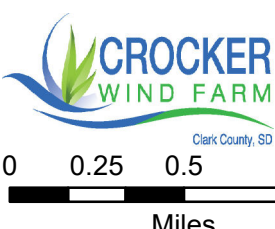
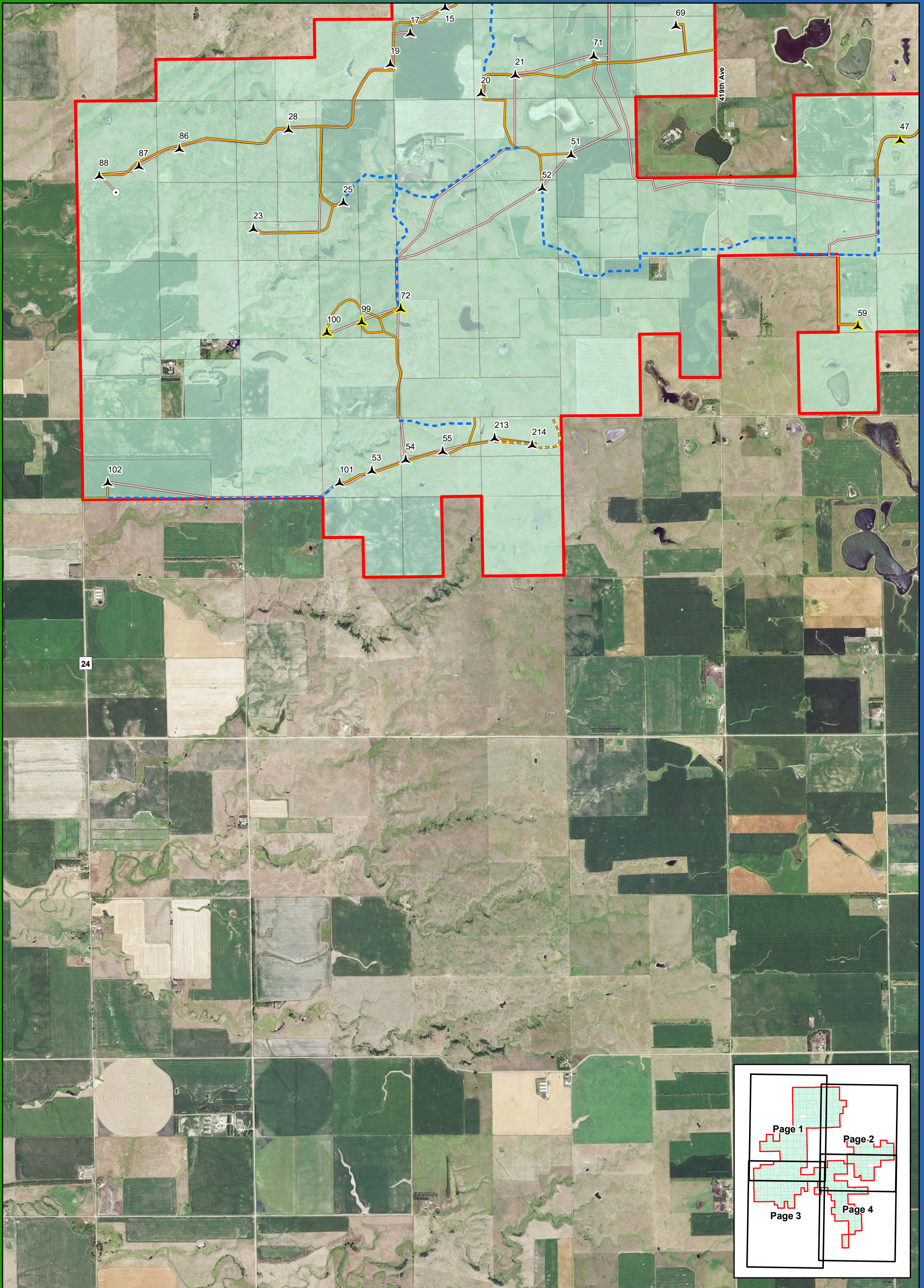
**Project Layout Map Series**

**Crocker Wind Farm  
Clark County, SD**

- ▲ Primary Turbine Location
- ▲ Alternate Turbine Location
- Permanent Met Tower
- Temporary Met Tower
- ▭ Project Area Boundary
- ▭ Project Substation
- ▭ O&M Facility
- ▭ Interconnect Switchyard
- ▭ Staging Area
- Interconnection 345 kV Transmission Line
- Access Road
- Alternate Access Road
- Collection Line
- Crane Path
- Participating Landowner

Note: Turbine numbering is not sequential.

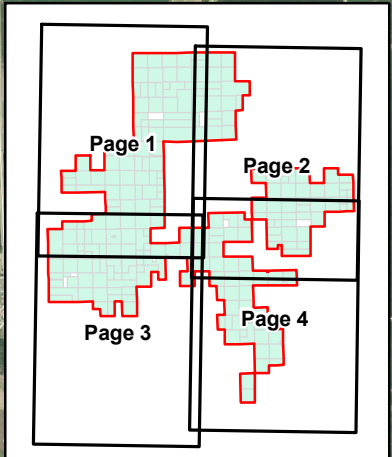




**Project Layout Map Series**

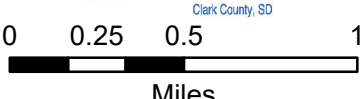
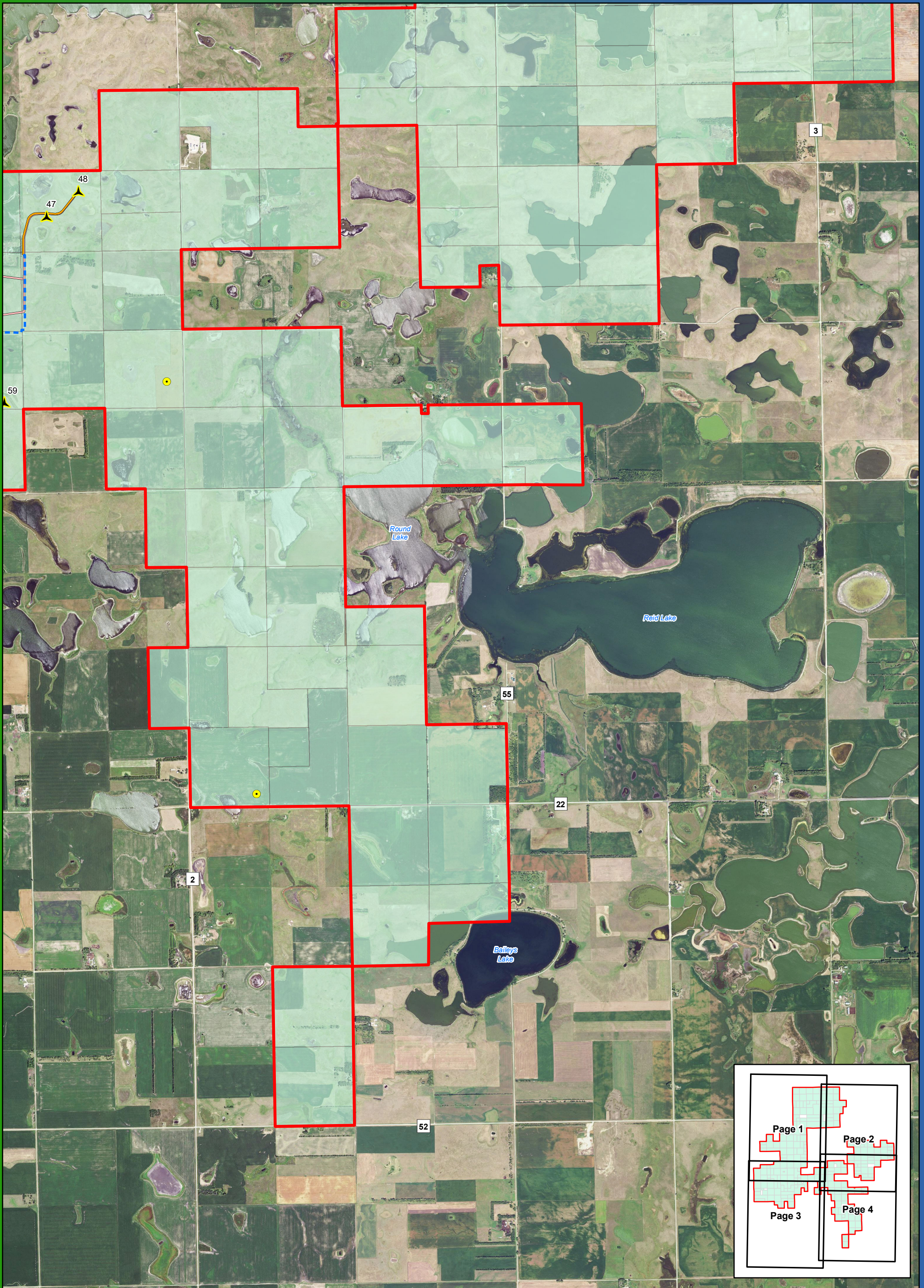
**Crocker Wind Farm  
Clark County, SD**

- |                              |  |
|------------------------------|--|
| ▲ Primary Turbine Location   | — Interconnection 345 kV Transmission Line |
| ▲ Alternate Turbine Location | — Access Road                              |
| ○ Permanent Met Tower        | — Alternate Access Road                    |
| ● Temporary Met Tower        | — Collection Line                          |
| □ Project Area Boundary      | — Crane Path                               |
| ⊠ Project Substation         | ■ Participating Landowner                  |
| ⊞ O&M Facility               |  |
| ⊞ Interconnect Switchyard    |  |
| ⊞ Staging Area               |  |



Note: Turbine numbering is not sequential.





**Project Layout Map Series**

**Crocker Wind Farm  
Clark County, SD**

- Primary Turbine Location
- Alternate Turbine Location
- Permanent Met Tower
- Temporary Met Tower
- Project Area Boundary
- Project Substation
- O&M Facility
- Interconnect Switchyard
- Staging Area
- Interconnection 345 kV Transmission Line
- Access Road
- Alternate Access Road
- Collection Line
- Crane Path
- Participating Landowner

Note: Turbine numbering is not sequential.