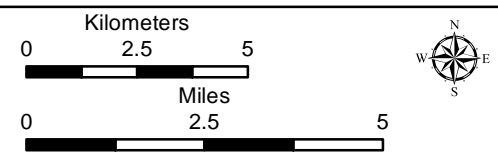
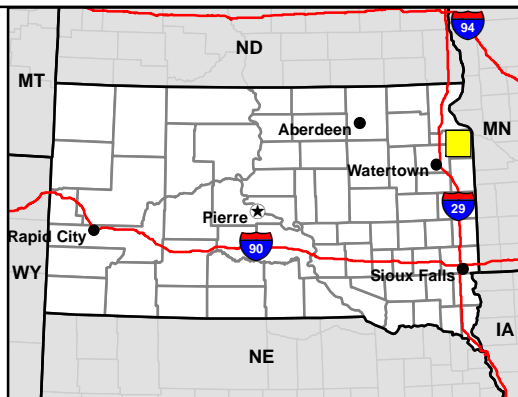


**Site Plan**

Crowned Ridge I Transmission Line

- City
- Proposed Transmission Line
- Page Index
- - - Township/Range Boundary
- County Boundary

Date: 3/25/2019



Base Map: 2017 Aerial Imagery  
 Source: USDA/FSA - APFO  
 Codington and Grant Counties, South Dakota

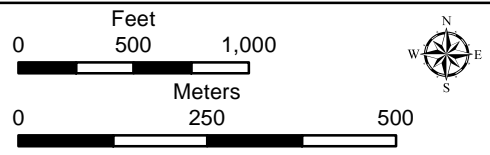
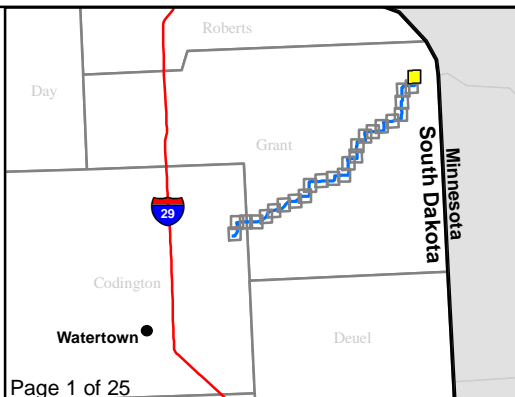




### Site Plan

#### Crowned Ridge I Transmission Line

- |                                  |                            |
|----------------------------------|----------------------------|
| <b>Structure Type</b>            |                            |
| 3-Pole Deadend                   | Self-Support Medium Angle  |
| 3-Pole Self-Support Medium Angle | Self-Support Deadend       |
| 3-Pole Strain                    | Substation Deadend         |
| H-Frame Light Tangent            | Proposed Transmission Line |
| Heavy Tangent                    | Haul Road                  |
| Light Tangent                    | Existing Road              |
| Self-Support Deadend             | Section Boundary           |
| Self-Support Light Angle         | Township/Range Boundary    |
|                                  | County Boundary            |



Base Map: 2017 Aerial Imagery  
 Source: USDA/FSA - APFO  
 Quadrangle: Big Stone Lake SE (1971)

Township/Range: T121N, R47W

Grant County, South Dakota

Projection: NAD 1983 UTM Zone 14N



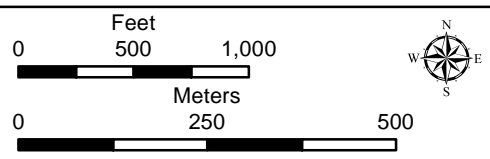
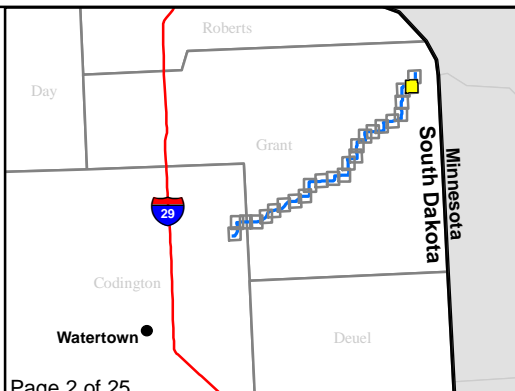




### Site Plan

#### Crowned Ridge I Transmission Line

- |                                  |                            |
|----------------------------------|----------------------------|
| <b>Structure Type</b>            | Self-Support Medium Angle  |
| 3-Pole Deadend                   | Self-Support Deadend       |
| 3-Pole Self-Support Medium Angle | Substation Deadend         |
| 3-Pole Strain                    | Proposed Transmission Line |
| H-Frame Light Tangent            | Haul Road                  |
| Heavy Tangent                    | Existing Road              |
| Light Tangent                    | Section Boundary           |
| Self-Support Deadend             | Township/Range Boundary    |
| Self-Support Light Angle         | County Boundary            |



Base Map: 2017 Aerial Imagery  
 Source: USDA/FSA - APFO  
 Quadrangle: Big Stone Lake SE (1971)  
 Township/Range: T121N, R47W  
 Grant County, South Dakota  
 Projection: NAD 1983 UTM Zone 14N



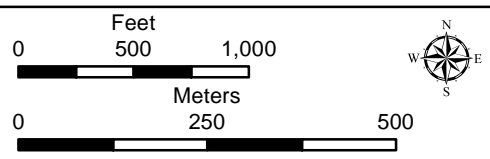




### Site Plan

#### Crowned Ridge I Transmission Line

- | Structure Type |                                  |
|----------------|----------------------------------|
|                | 3-Pole Deadend                   |
|                | 3-Pole Self-Support Medium Angle |
|                | 3-Pole Strain                    |
|                | H-Frame Light Tangent            |
|                | Heavy Tangent                    |
|                | Light Tangent                    |
|                | Self-Support Deadend             |
|                | Self-Support Light Angle         |
|                | Self-Support Medium Angle        |
|                | Self-Support Deadend             |
|                | Substation Deadend               |
|                | Proposed Transmission Line       |
|                | Haul Road                        |
|                | Existing Road                    |
|                | Section Boundary                 |
|                | Township/Range Boundary          |
|                | County Boundary                  |



Base Map: 2017 Aerial Imagery  
 Source: USDA/FSA - APFO  
 Quadrangle: Milbank East (1973),  
 Big Stone Lake SE (1971)  
 Township/Range: T121N, R47W

Grant County, South Dakota  
 Projection: NAD 1983 UTM Zone 14N

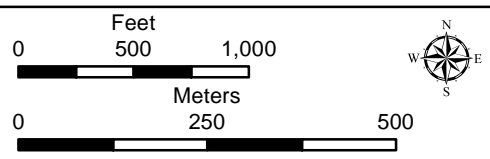
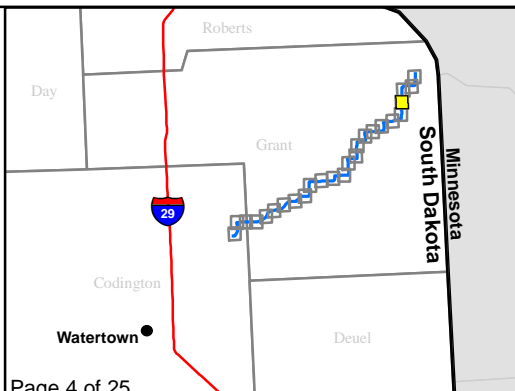




### Site Plan

#### Crowned Ridge I Transmission Line

- |                                    |                                |
|------------------------------------|--------------------------------|
| <b>Structure Type</b>              | ● Self-Support Medium Angle    |
| ● 3-Pole Deadend                   | ● Self-Support Deadend         |
| ● 3-Pole Self-Support Medium Angle | ● Substation Deadend           |
| ● 3-Pole Strain                    | --- Proposed Transmission Line |
| ● H-Frame Light Tangent            | — Haul Road                    |
| ● Heavy Tangent                    | — Existing Road                |
| ● Light Tangent                    | — Section Boundary             |
| ● Self-Support Deadend             | — Township/Range Boundary      |
| ● Self-Support Light Angle         | — County Boundary              |



Base Map: 2017 Aerial Imagery  
 Source: USDA/FSA - APFO  
 Quadrangle: Milbank East (1973)

Township/Range: T121N, R47W & T120N, R48W  
 Grant County, South Dakota

Projection: NAD 1983 UTM Zone 14N



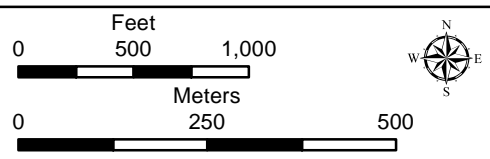
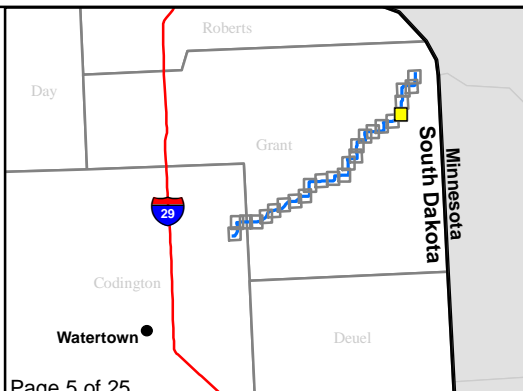




### Site Plan

#### Crowned Ridge I Transmission Line

- Structure Type**
- 3-Pole Deadend
  - 3-Pole Self-Support Medium Angle
  - 3-Pole Strain
  - H-Frame Light Tangent
  - Heavy Tangent
  - Light Tangent
  - Self-Support Deadend
  - Self-Support Light Angle
  - Self-Support Medium Angle
  - Self-Support Deadend
  - Substation Deadend
  - Proposed Transmission Line
  - Haul Road
  - Existing Road
  - Section Boundary
  - Township/Range Boundary
  - County Boundary



Base Map: 2017 Aerial Imagery  
 Source: USDA/FSA - APFO  
 Quadrangle: Milbank East (1973)

Township/Range: T120N, R48W  
 Grant County, South Dakota

Projection: NAD 1983 UTM Zone 14N

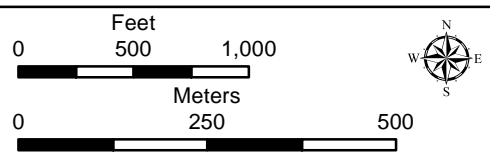
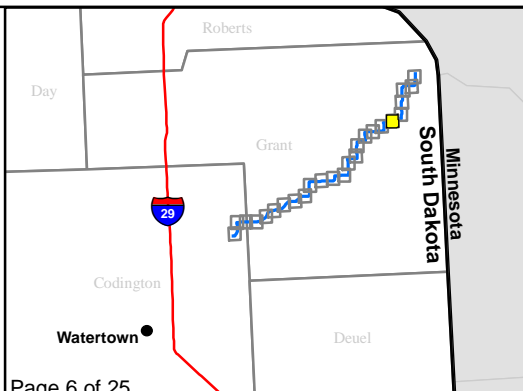




### Site Plan

#### Crowned Ridge I Transmission Line

- |                                    |                                |
|------------------------------------|--------------------------------|
| <b>Structure Type</b>              | ● Self-Support Medium Angle    |
| ● 3-Pole Deadend                   | ● Self-Support Deadend         |
| ● 3-Pole Self-Support Medium Angle | ● Substation Deadend           |
| ● 3-Pole Strain                    | --- Proposed Transmission Line |
| ● H-Frame Light Tangent            | — Haul Road                    |
| ● Heavy Tangent                    | — Existing Road                |
| ● Light Tangent                    | — Section Boundary             |
| ● Self-Support Deadend             | --- Township/Range Boundary    |
| ● Self-Support Light Angle         | --- County Boundary            |



Base Map: 2017 Aerial Imagery  
 Source: USDA/FSA - APFO  
 Quadrangle: Milbank East (1973)

Township/Range: T120N, R48W

Grant County, South Dakota

Projection: NAD 1983 UTM Zone 14N



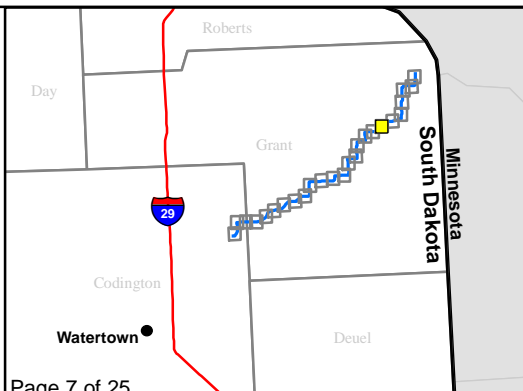




### Site Plan

#### Crowned Ridge I Transmission Line

- |                                  |                            |
|----------------------------------|----------------------------|
| <b>Structure Type</b>            |                            |
| 3-Pole Deadend                   | Self-Support Medium Angle  |
| 3-Pole Self-Support Medium Angle | Self-Support Deadend       |
| 3-Pole Strain                    | Substation Deadend         |
| H-Frame Light Tangent            | Proposed Transmission Line |
| Heavy Tangent                    | Haul Road                  |
| Light Tangent                    | Existing Road              |
| Self-Support Deadend             | Section Boundary           |
| Self-Support Light Angle         | Township/Range Boundary    |
|                                  | County Boundary            |



0 500 1,000

0 250 500

Base Map: 2017 Aerial Imagery  
Source: USDA/FSA - APFO  
Quadrangle: Milbank East (1973)

Township/Range: T120N, R48W

Grant County, South Dakota

Projection: NAD 1983 UTM Zone 14N

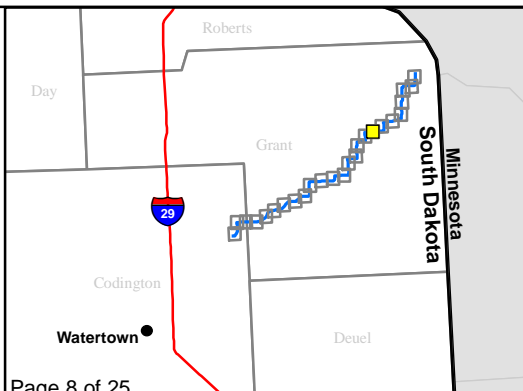




### Site Plan

#### Crowned Ridge I Transmission Line

- |                                    |                                |
|------------------------------------|--------------------------------|
| <b>Structure Type</b>              | ● Self-Support Medium Angle    |
| ● 3-Pole Deadend                   | ● Self-Support Deadend         |
| ● 3-Pole Self-Support Medium Angle | ● Substation Deadend           |
| ● 3-Pole Strain                    | --- Proposed Transmission Line |
| ● H-Frame Light Tangent            | — Haul Road                    |
| ● Heavy Tangent                    | — Existing Road                |
| ● Light Tangent                    | — Section Boundary             |
| ● Self-Support Deadend             | --- Township/Range Boundary    |
| ● Self-Support Light Angle         | --- County Boundary            |



0	500	1,000
Feet		
0	250	500
Meters		
Base Map: 2017 Aerial Imagery Source: USDA/FSA - APFO Quadrangle: Milbank East (1973)		
Township/Range: T120N, R48W Grant County, South Dakota		
Projection: NAD 1983 UTM Zone 14N		



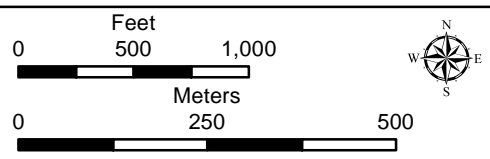
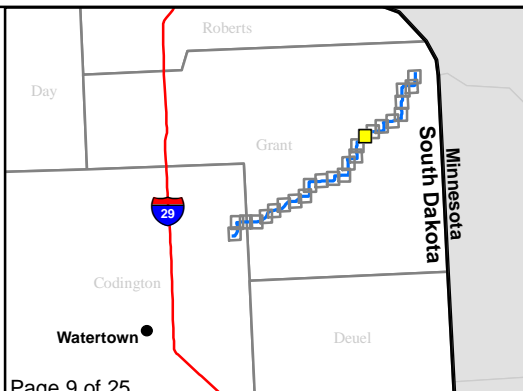




### Site Plan

#### Crowned Ridge I Transmission Line

- |                       |  |
|-----------------------|--|
| <b>Structure Type</b> | <ul style="list-style-type: none"> <li><span style="color: cyan;">●</span> Self-Support Medium Angle</li> <li><span style="color: purple;">●</span> Self-Support Deadend</li> <li><span style="color: black;">●</span> Substation Deadend</li> <li><span style="color: magenta;">●</span> 3-Pole Strain</li> <li><span style="color: orange;">●</span> H-Frame Light Tangent</li> <li><span style="color: blue;">●</span> Heavy Tangent</li> <li><span style="color: lightblue;">●</span> Light Tangent</li> <li><span style="color: red;">●</span> Self-Support Deadend</li> <li><span style="color: green;">●</span> Self-Support Light Angle</li> </ul> |
|                       | <ul style="list-style-type: none"> <li><span style="color: black;">—</span> Proposed Transmission Line</li> <li><span style="color: yellow;">—</span> Haul Road</li> <li><span style="color: black;">—</span> Existing Road</li> <li><span style="border: 1px solid yellow; display: inline-block; width: 10px; height: 10px;"></span> Section Boundary</li> <li><span style="border: 1px dashed black; display: inline-block; width: 10px; height: 10px;"></span> Township/Range Boundary</li> <li><span style="border: 1px solid gray; display: inline-block; width: 10px; height: 10px;"></span> County Boundary</li> </ul>                             |



Base Map: 2017 Aerial Imagery  
 Source: USDA/FSA - APFO  
 Quadrangle: Milbank West (1973),  
 Milbank East (1973)  
 Township/Range: T120N, R48W

Grant County, South Dakota  
 Projection: NAD 1983 UTM Zone 14N

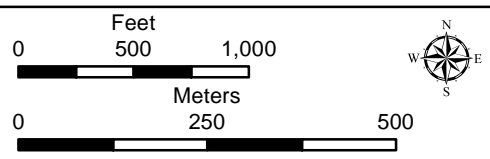
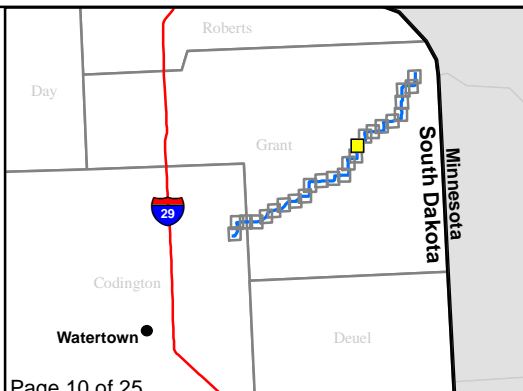




### Site Plan

#### Crowned Ridge I Transmission Line

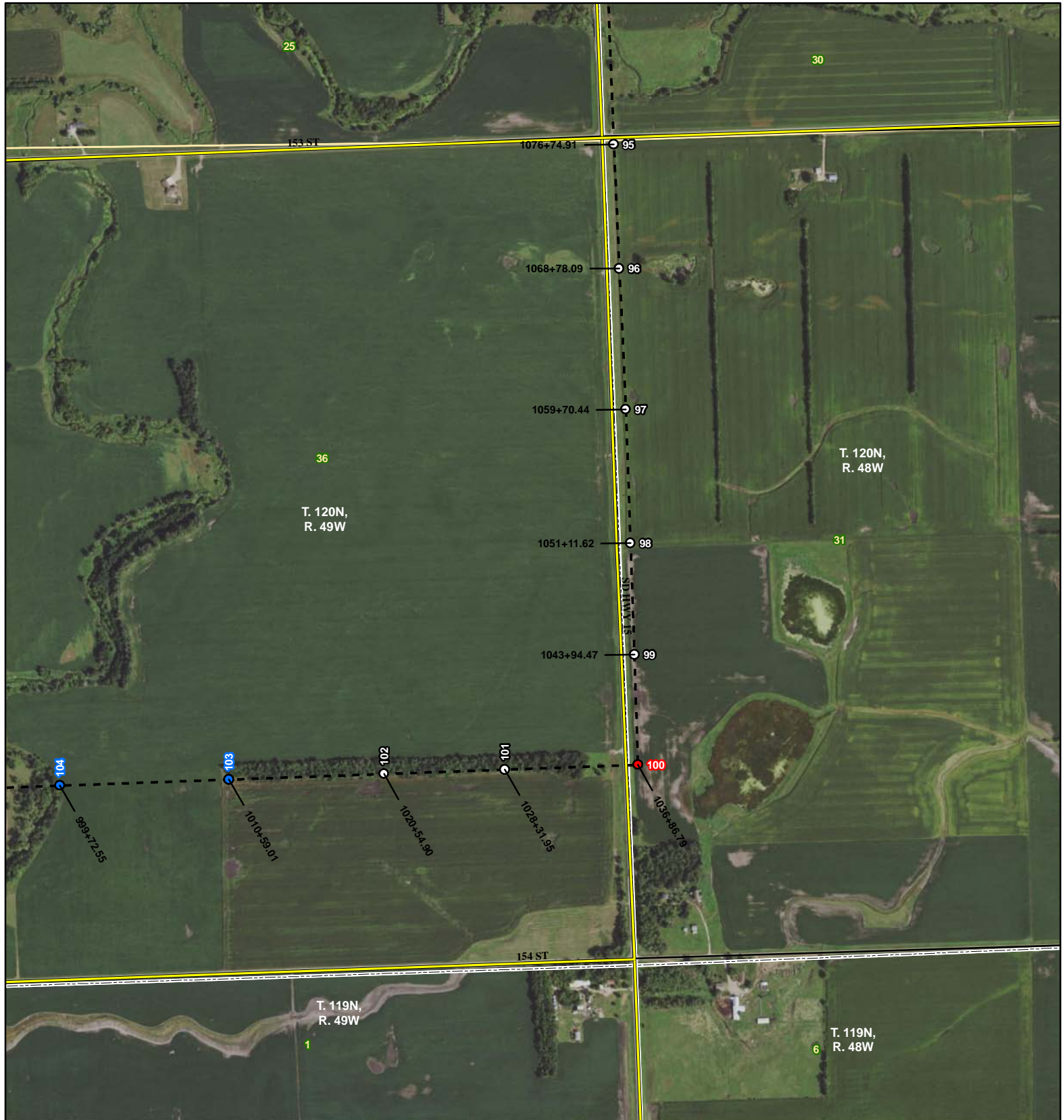
- |   |  |
|---|--|
| <b>Structure Type</b>   | <ul style="list-style-type: none"> <li><span style="color: cyan;">●</span> Self-Support Medium Angle</li> <li><span style="color: purple;">●</span> Self-Support Deadend</li> <li><span style="color: black;">●</span> Substation Deadend</li> <li><span style="color: red;">●</span> Proposed Transmission Line</li> <li><span style="color: yellow;">—</span> Haul Road</li> <li><span style="color: black;">—</span> Existing Road</li> <li><span style="border: 1px solid yellow; display: inline-block; width: 10px; height: 10px;"></span> Section Boundary</li> <li><span style="border: 1px dashed black; display: inline-block; width: 10px; height: 10px;"></span> Township/Range Boundary</li> <li><span style="border: 1px solid gray; display: inline-block; width: 10px; height: 10px;"></span> County Boundary</li> </ul> |
| <ul style="list-style-type: none"> <li><span style="color: yellow;">●</span> 3-Pole Deadend</li> <li><span style="color: green;">●</span> 3-Pole Self-Support Medium Angle</li> <li><span style="color: magenta;">●</span> 3-Pole Strain</li> <li><span style="color: orange;">●</span> H-Frame Light Tangent</li> <li><span style="color: blue;">●</span> Heavy Tangent</li> <li><span style="color: lightblue;">●</span> Light Tangent</li> <li><span style="color: red;">●</span> Self-Support Deadend</li> <li><span style="color: darkgreen;">●</span> Self-Support Light Angle</li> </ul> |  |



Base Map: 2017 Aerial Imagery  
 Source: USDA/FSA - APFO  
 Quadrangle: Milbank West (1973)  
 Township/Range: T120N, R48W  
 Grant County, South Dakota  
 Projection: NAD 1983 UTM Zone 14N



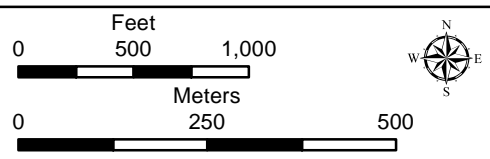
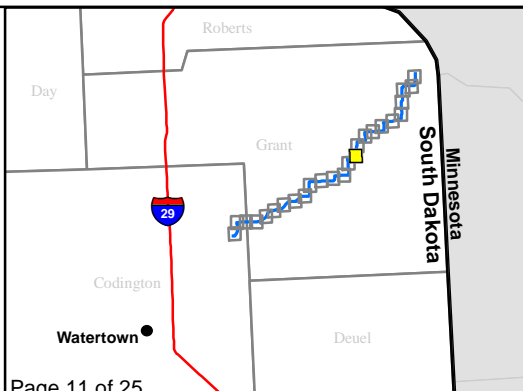




### Site Plan

#### Crowned Ridge I Transmission Line

- Structure Type**
- 3-Pole Deadend
  - 3-Pole Self-Support Medium Angle
  - 3-Pole Strain
  - H-Frame Light Tangent
  - Heavy Tangent
  - Light Tangent
  - Self-Support Deadend
  - Self-Support Light Angle
  - Self-Support Medium Angle
  - Self-Support Deadend
  - Substation Deadend
  - Proposed Transmission Line
  - Haul Road
  - Existing Road
  - Section Boundary
  - Township/Range Boundary
  - County Boundary

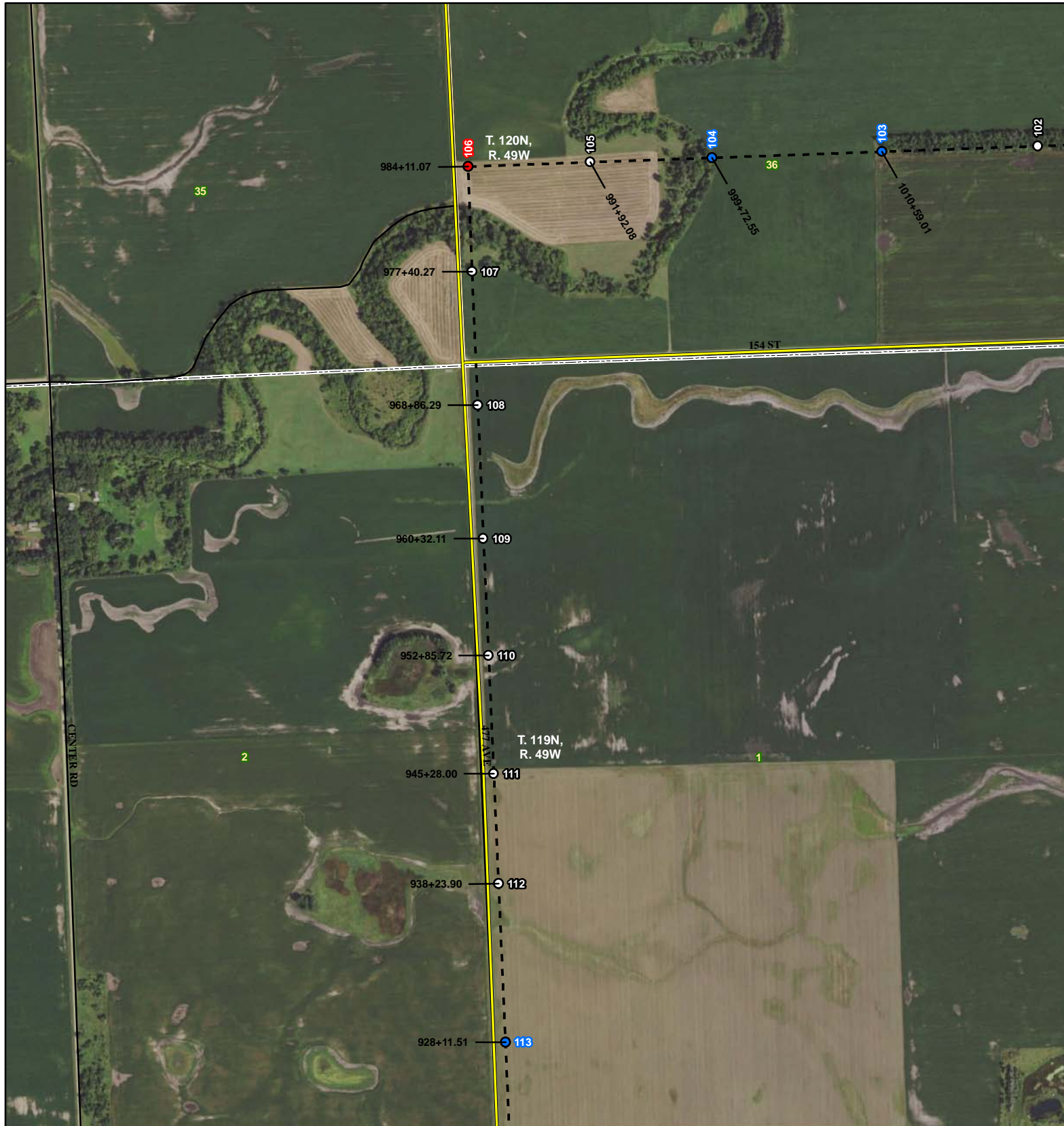


Base Map: 2017 Aerial Imagery  
 Source: USDA/FSA - APFO  
 Quadrangle: Milbank West (1973)

Township/Range: T120N, R48W & T120N, R49W  
 Grant County, South Dakota

Projection: NAD 1983 UTM Zone 14N

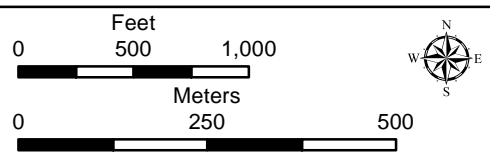
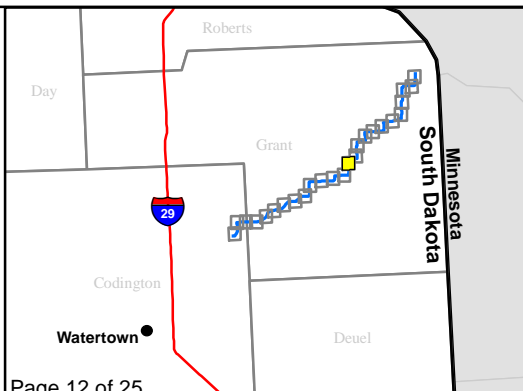
**SWCA**  
 ENVIRONMENTAL CONSULTANTS



### Site Plan

#### Crowned Ridge I Transmission Line

- |  |   |
|--|---|
| <b>Structure Type</b>  | <ul style="list-style-type: none"> <li><span style="color: cyan;">●</span> Self-Support Medium Angle</li> <li><span style="color: purple;">●</span> Self-Support Deadend</li> <li><span style="color: black;">●</span> Substation Deadend</li> <li><span style="color: red;">●</span> Self-Support Deadend</li> <li><span style="color: green;">●</span> Self-Support Light Angle</li> </ul>  |
| <ul style="list-style-type: none"> <li><span style="color: yellow;">●</span> 3-Pole Deadend</li> <li><span style="color: green;">●</span> 3-Pole Self-Support Medium Angle</li> <li><span style="color: pink;">●</span> 3-Pole Strain</li> <li><span style="color: orange;">●</span> H-Frame Light Tangent</li> <li><span style="color: blue;">●</span> Heavy Tangent</li> <li><span style="color: lightblue;">●</span> Light Tangent</li> <li><span style="color: red;">●</span> Self-Support Deadend</li> <li><span style="color: green;">●</span> Self-Support Light Angle</li> </ul> | <ul style="list-style-type: none"> <li><span style="color: black;">---</span> Proposed Transmission Line</li> <li><span style="color: yellow;">---</span> Haul Road</li> <li><span style="color: black;">---</span> Existing Road</li> <li><span style="border: 1px solid yellow; display: inline-block; width: 10px; height: 10px;"></span> Section Boundary</li> <li><span style="border: 1px dashed black; display: inline-block; width: 10px; height: 10px;"></span> Township/Range Boundary</li> <li><span style="border: 1px solid black; display: inline-block; width: 10px; height: 10px;"></span> County Boundary</li> </ul> |



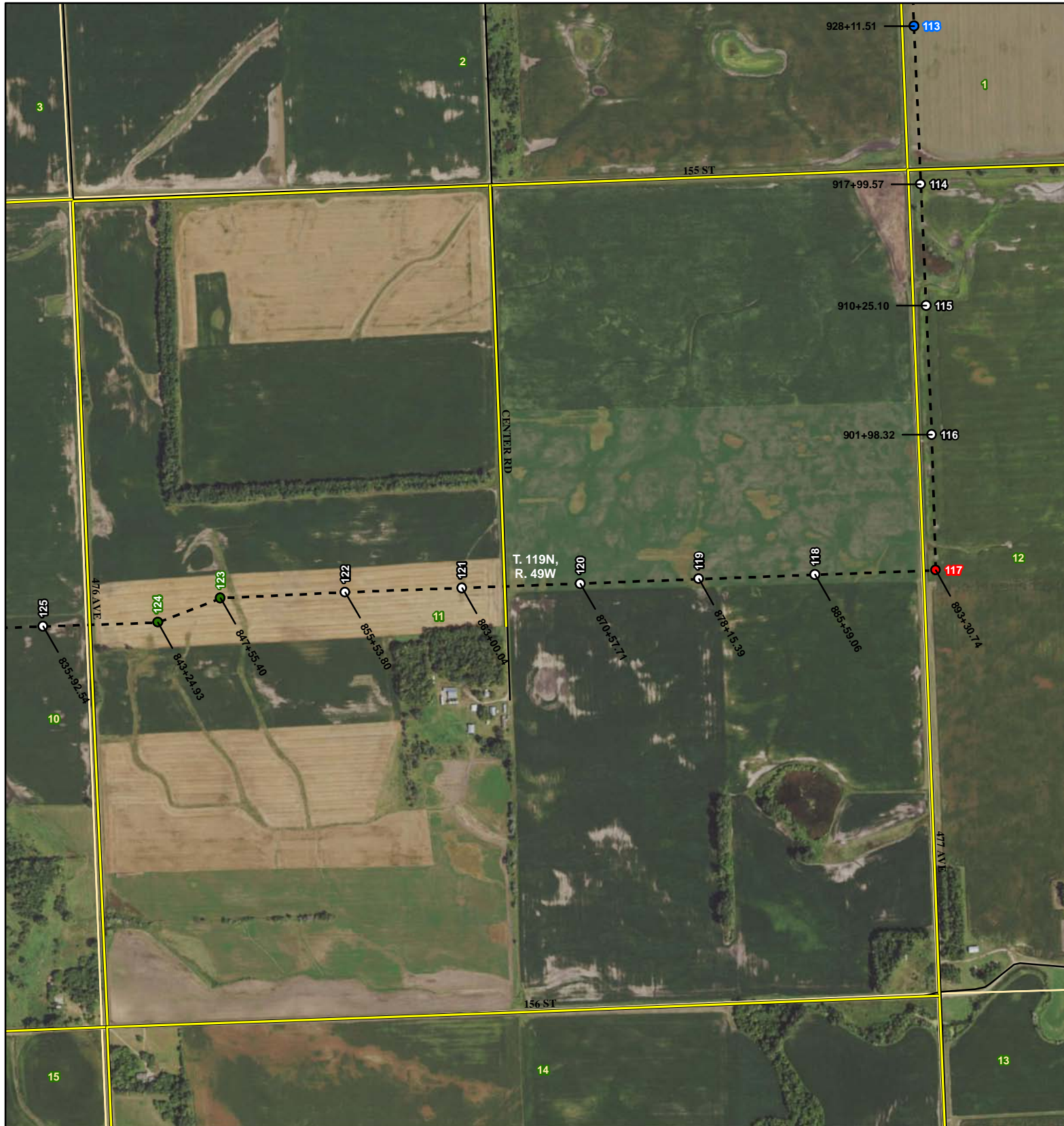
Base Map: 2017 Aerial Imagery  
 Source: USDA/FSA - APFO  
 Quadrangle: Milbank West (1973)

Township/Range: T120N, R49W & T119N, R49W  
 Grant County, South Dakota

Projection: NAD 1983 UTM Zone 14N



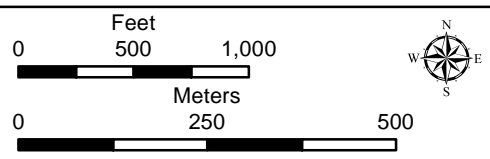
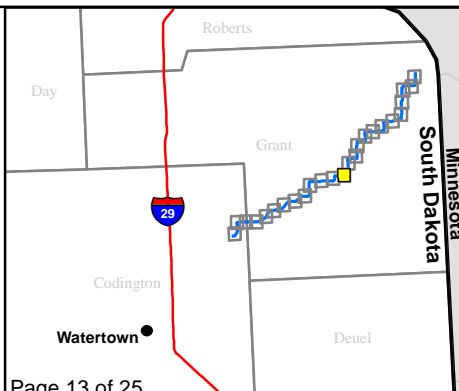




### Site Plan

#### Crowned Ridge I Transmission Line

- |                                  |                            |
|----------------------------------|----------------------------|
| <b>Structure Type</b>            |                            |
| 3-Pole Deadend                   | Self-Support Medium Angle  |
| 3-Pole Self-Support Medium Angle | Self-Support Deadend       |
| 3-Pole Strain                    | Substation Deadend         |
| H-Frame Light Tangent            | Proposed Transmission Line |
| Heavy Tangent                    | Haul Road                  |
| Light Tangent                    | Existing Road              |
| Self-Support Deadend             | Section Boundary           |
| Self-Support Light Angle         | Township/Range Boundary    |
|                                  | County Boundary            |



Base Map: 2017 Aerial Imagery  
 Source: USDA/FSA - APFO  
 Quadrange: Milbank West (1973)

Township/Range: T119N, R49W

Grant County, South Dakota

Projection: NAD 1983 UTM Zone 14N



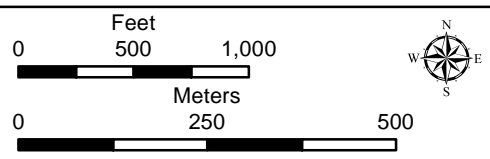
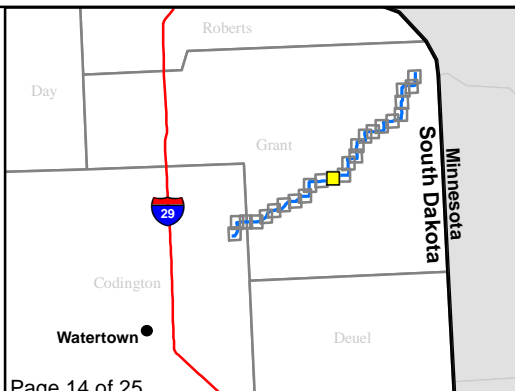




### Site Plan

#### Crowned Ridge I Transmission Line

- |                                    |                                  |
|------------------------------------|----------------------------------|
| <b>Structure Type</b>              | ● Self-Support Medium Angle      |
| ● 3-Pole Deadend                   | ● Self-Support Deadend           |
| ● 3-Pole Self-Support Medium Angle | ● Substation Deadend             |
| ● 3-Pole Strain                    | - - - Proposed Transmission Line |
| ● H-Frame Light Tangent            | — Haul Road                      |
| ● Heavy Tangent                    | — Existing Road                  |
| ● Light Tangent                    | — Section Boundary               |
| ● Self-Support Deadend             | - - - Township/Range Boundary    |
| ● Self-Support Light Angle         | — County Boundary                |



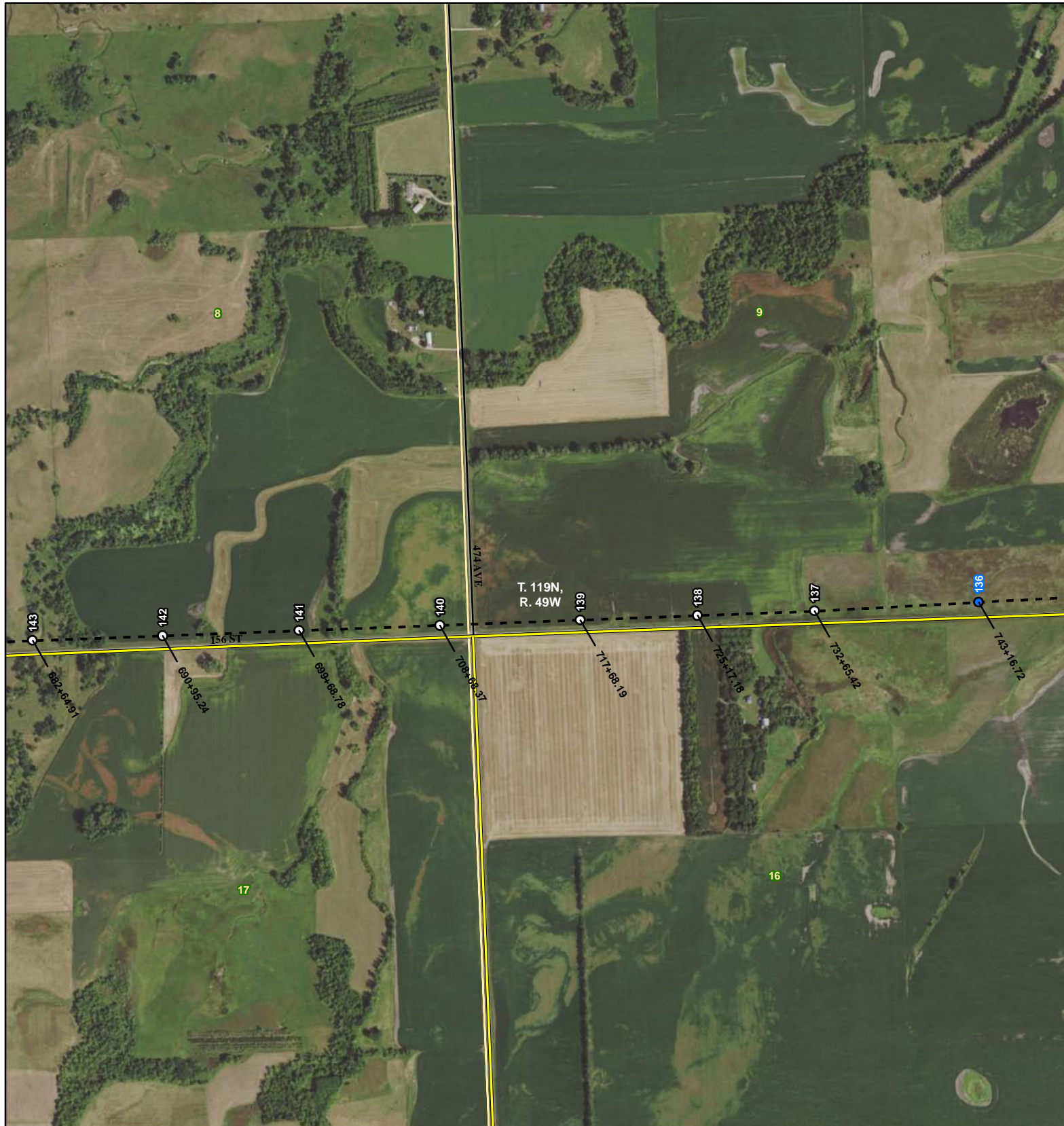
Base Map: 2017 Aerial Imagery  
 Source: USDA/FSA - APFO  
 Quadrangle: La Bolt (1973),  
 Milbank West (1973)  
 Township/Range: T119N, R49W

Grant County, South Dakota

Projection: NAD 1983 UTM Zone 14N



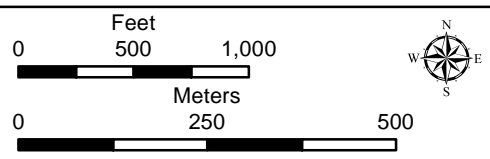
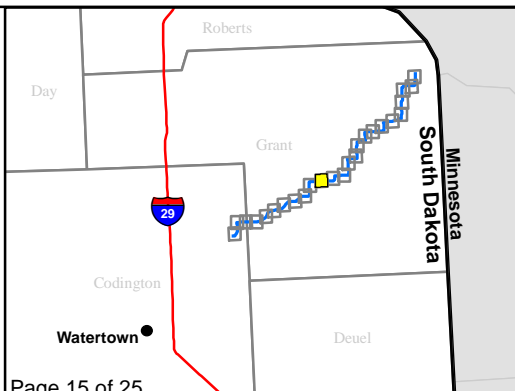




### Site Plan

#### Crowned Ridge I Transmission Line

- |                                    |                                |
|------------------------------------|--------------------------------|
| <b>Structure Type</b>              | ● Self-Support Medium Angle    |
| ● 3-Pole Deadend                   | ● Self-Support Deadend         |
| ● 3-Pole Self-Support Medium Angle | ● Substation Deadend           |
| ● 3-Pole Strain                    | --- Proposed Transmission Line |
| ● H-Frame Light Tangent            | — Haul Road                    |
| ● Heavy Tangent                    | — Existing Road                |
| ● Light Tangent                    | □ Section Boundary             |
| ● Self-Support Deadend             | □ Township/Range Boundary      |
| ● Self-Support Light Angle         | □ County Boundary              |



Base Map: 2017 Aerial Imagery  
 Source: USDA/FSA - APFO  
 Quadrangle: La Bolt (1973)

Township/Range: T119N, R49W

Grant County, South Dakota

Projection: NAD 1983 UTM Zone 14N



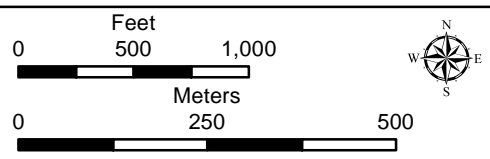
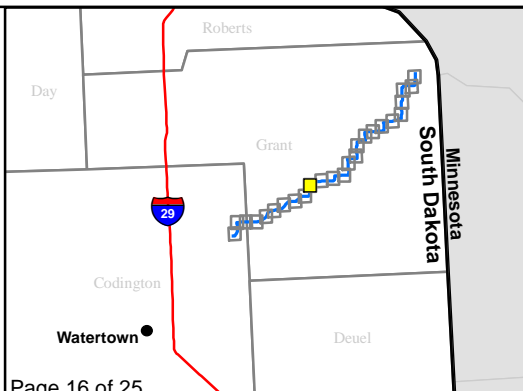




### Site Plan

#### Crowned Ridge I Transmission Line

- |   |  |
|---|--|
| <b>Structure Type</b>   | <ul style="list-style-type: none"> <li><span style="color: cyan;">●</span> Self-Support Medium Angle</li> <li><span style="color: magenta;">●</span> Self-Support Deadend</li> <li><span style="color: black;">●</span> Substation Deadend</li> <li><span style="color: black;">---</span> Proposed Transmission Line</li> <li><span style="color: yellow;">---</span> Haul Road</li> <li><span style="color: black;">---</span> Existing Road</li> <li><span style="border: 1px solid yellow; display: inline-block; width: 10px; height: 10px;"></span> Section Boundary</li> <li><span style="border: 1px dashed black; display: inline-block; width: 10px; height: 10px;"></span> Township/Range Boundary</li> <li><span style="border: 1px solid black; display: inline-block; width: 10px; height: 10px;"></span> County Boundary</li> </ul> |
| <ul style="list-style-type: none"> <li><span style="color: yellow;">●</span> 3-Pole Deadend</li> <li><span style="color: green;">●</span> 3-Pole Self-Support Medium Angle</li> <li><span style="color: magenta;">●</span> 3-Pole Strain</li> <li><span style="color: orange;">●</span> H-Frame Light Tangent</li> <li><span style="color: blue;">●</span> Heavy Tangent</li> <li><span style="color: lightblue;">●</span> Light Tangent</li> <li><span style="color: red;">●</span> Self-Support Deadend</li> <li><span style="color: darkgreen;">●</span> Self-Support Light Angle</li> </ul> |  |




Base Map: 2017 Aerial Imagery  
 Source: USDA/FSA - APFO  
 Quadrangle: La Bolt (1973)

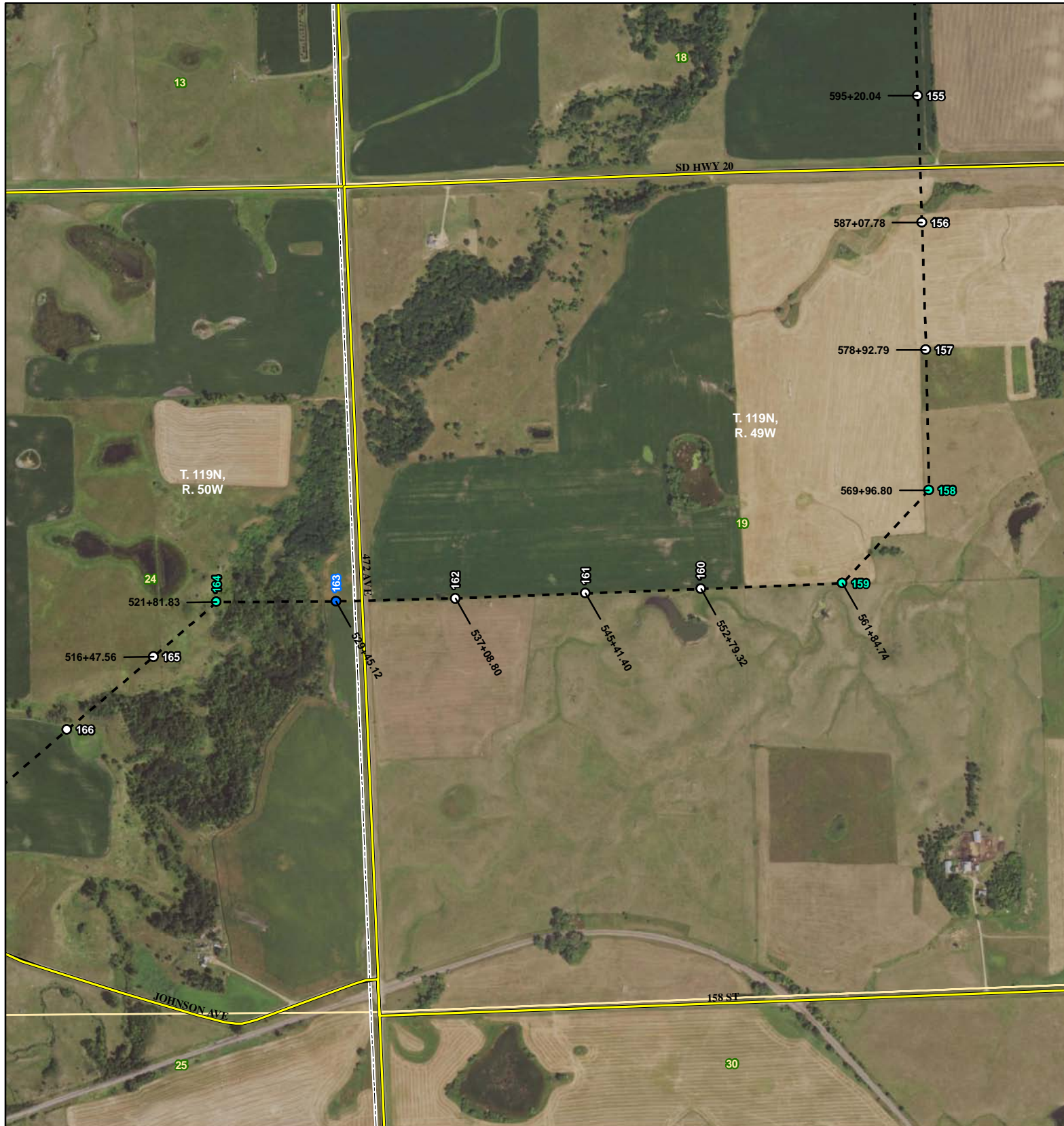
Township/Range: T119N, R49W

Grant County, South Dakota

Projection: NAD 1983 UTM Zone 14N

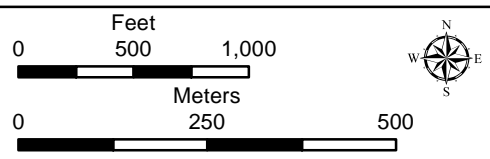
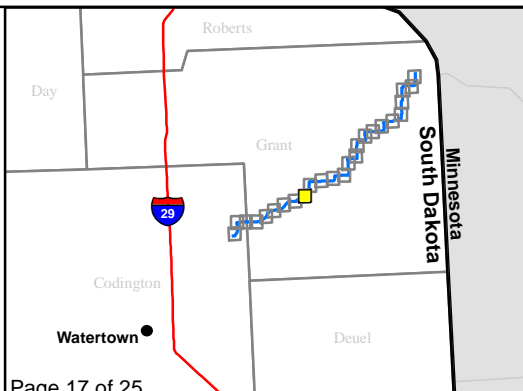






### Site Plan Crowned Ridge I Transmission Line

- Structure Type**
- 3-Pole Deadend
  - 3-Pole Self-Support Medium Angle
  - 3-Pole Strain
  - H-Frame Light Tangent
  - Heavy Tangent
  - Light Tangent
  - Self-Support Deadend
  - Self-Support Light Angle
  - Self-Support Medium Angle
  - Self-Support Deadend
  - Substation Deadend
  - Proposed Transmission Line
  - Haul Road
  - Existing Road
  - Section Boundary
  - Township/Range Boundary
  - County Boundary



Base Map: 2017 Aerial Imagery  
 Source: USDA/FSA - APFO  
 Quadrange: Stockholm (1973),  
 La Bolt (1973)  
 Township/Range: T119N, R49W &  
 T119N, R50W  
 Grant County, South Dakota



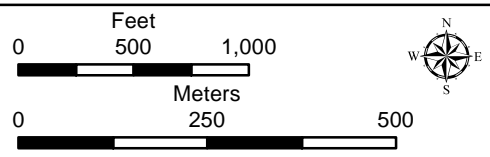
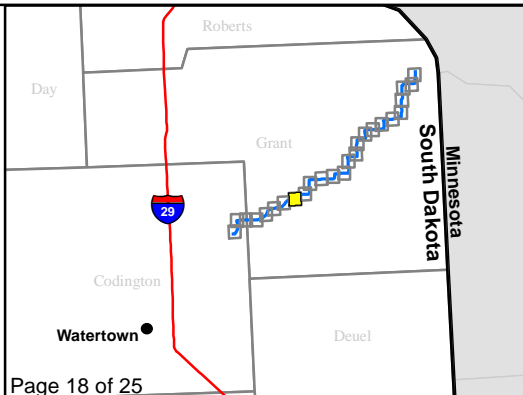




### Site Plan

#### Crowned Ridge I Transmission Line

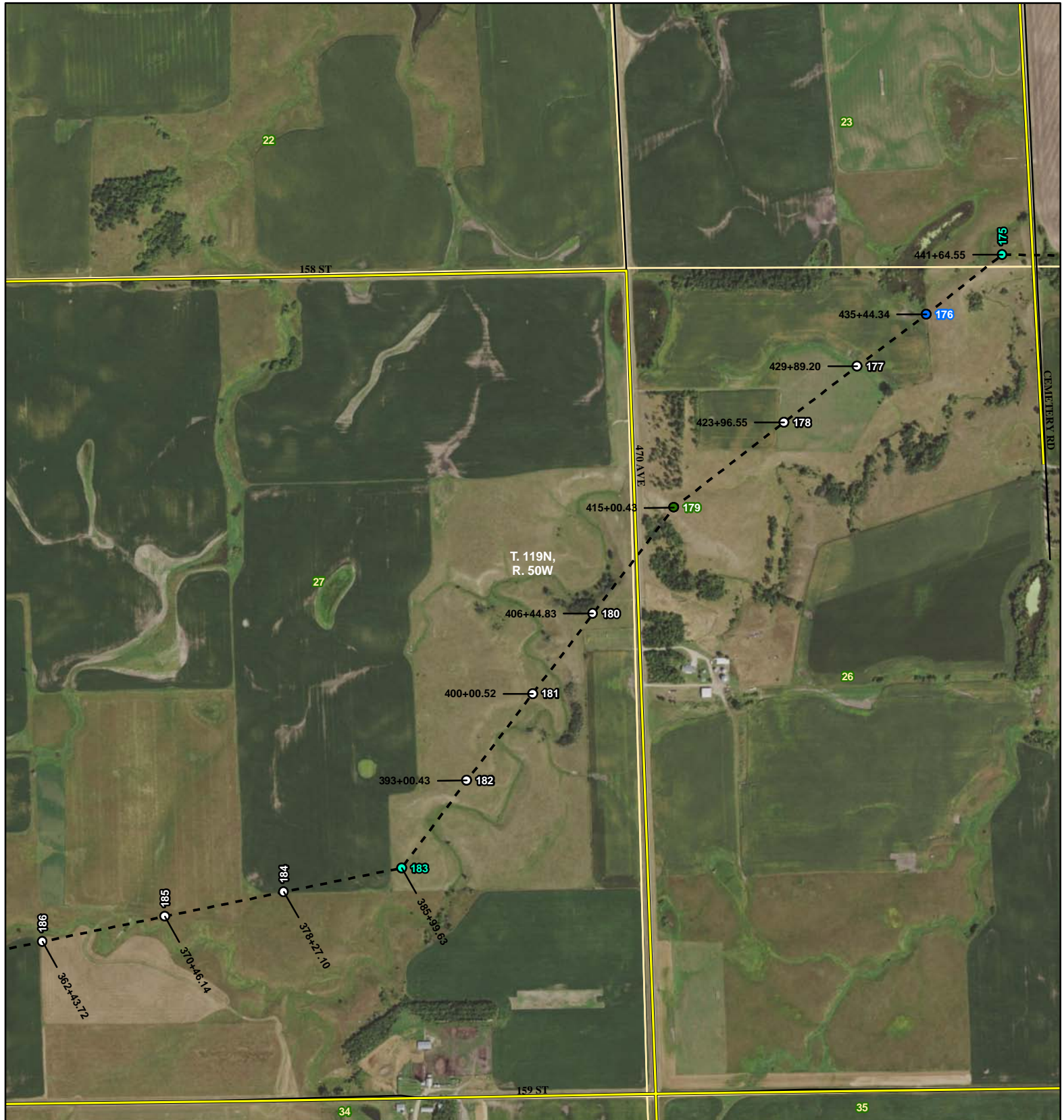
- |                                  |                            |
|----------------------------------|----------------------------|
| <b>Structure Type</b>            | Self-Support Medium Angle  |
| 3-Pole Deadend                   | Self-Support Deadend       |
| 3-Pole Self-Support Medium Angle | Substation Deadend         |
| 3-Pole Strain                    | Proposed Transmission Line |
| H-Frame Light Tangent            | Haul Road                  |
| Heavy Tangent                    | Existing Road              |
| Light Tangent                    | Section Boundary           |
| Self-Support Deadend             | Township/Range Boundary    |
| Self-Support Light Angle         | County Boundary            |



Base Map: 2017 Aerial Imagery  
 Source: USDA/FSA - APFO  
 Quadrange: Stockholm (1973)  
 Township/Range: T119N, R50W  
 Grant County, South Dakota  
 Projection: NAD 1983 UTM Zone 14N



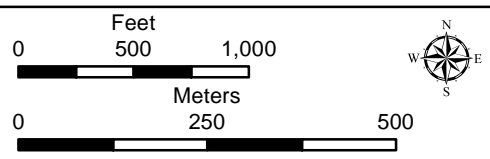
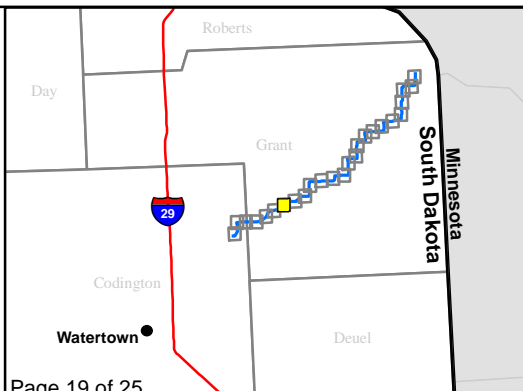




### Site Plan

#### Crowned Ridge I Transmission Line

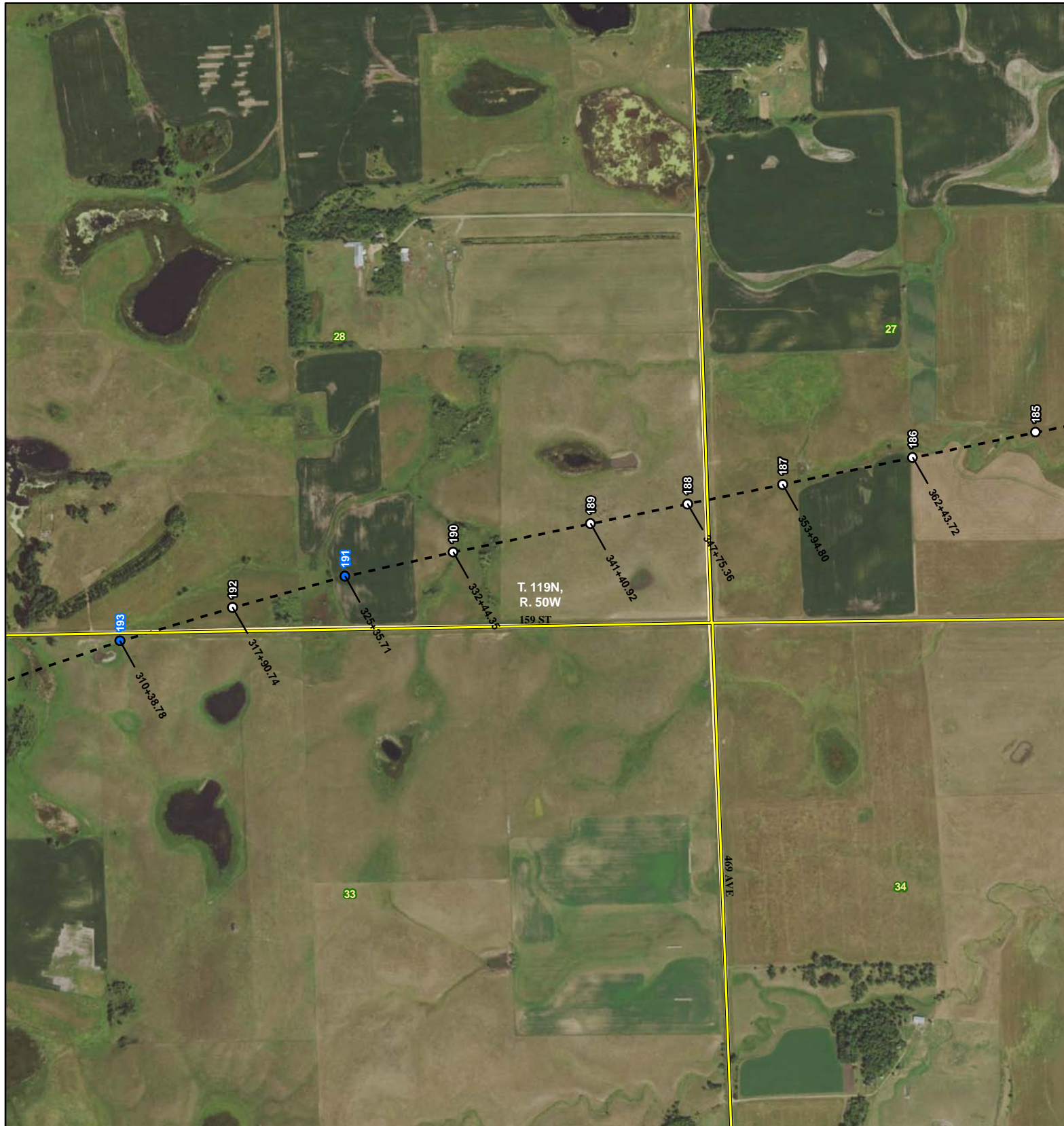
- |                                  |                            |
|----------------------------------|----------------------------|
| <b>Structure Type</b>            |                            |
| 3-Pole Deadend                   | Self-Support Medium Angle  |
| 3-Pole Self-Support Medium Angle | Self-Support Deadend       |
| 3-Pole Strain                    | Substation Deadend         |
| H-Frame Light Tangent            | Proposed Transmission Line |
| Heavy Tangent                    | Haul Road                  |
| Light Tangent                    | Existing Road              |
| Self-Support Deadend             | Section Boundary           |
| Self-Support Light Angle         | Township/Range Boundary    |
|                                  | County Boundary            |



Base Map: 2017 Aerial Imagery  
 Source: USDA/FSA - APFO  
 Quadrange: Stockholm (1973)  
 Township/Range: T119N, R50W  
 Grant County, South Dakota  
 Projection: NAD 1983 UTM Zone 14N



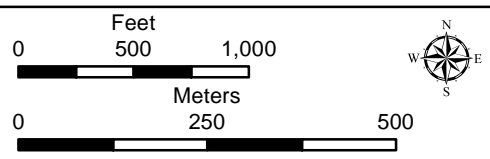
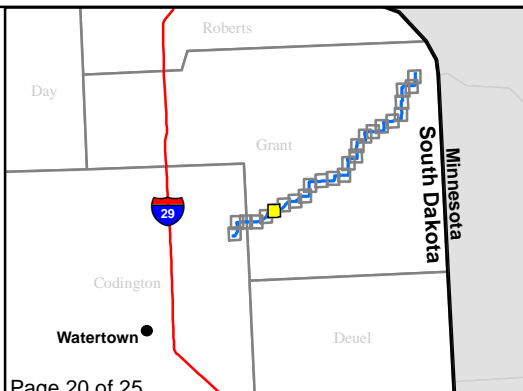




### Site Plan

#### Crowned Ridge I Transmission Line

- |                                    |                                |
|------------------------------------|--------------------------------|
| <b>Structure Type</b>              | ● Self-Support Medium Angle    |
| ● 3-Pole Deadend                   | ● Self-Support Deadend         |
| ● 3-Pole Self-Support Medium Angle | ● Substation Deadend           |
| ● 3-Pole Strain                    | --- Proposed Transmission Line |
| ● H-Frame Light Tangent            | — Haul Road                    |
| ● Heavy Tangent                    | — Existing Road                |
| ● Light Tangent                    | — Section Boundary             |
| ● Self-Support Deadend             | --- Township/Range Boundary    |
| ● Self-Support Light Angle         | --- County Boundary            |



Base Map: 2017 Aerial Imagery  
 Source: USDA/FSA - APFO  
 Quadrangle: Stockholm (1973)  
 Township/Range: T119N, R50W  
 Grant County, South Dakota  
 Projection: NAD 1983 UTM Zone 14N



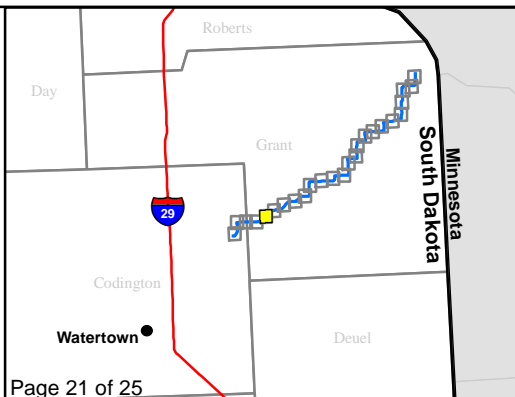




### Site Plan

#### Crowned Ridge I Transmission Line

- | Structure Type |                                  |
|----------------|----------------------------------|
|                | 3-Pole Deadend                   |
|                | 3-Pole Self-Support Medium Angle |
|                | 3-Pole Strain                    |
|                | H-Frame Light Tangent            |
|                | Heavy Tangent                    |
|                | Light Tangent                    |
|                | Self-Support Deadend             |
|                | Self-Support Light Angle         |
|                | Self-Support Medium Angle        |
|                | Substation Deadend               |
|                | Proposed Transmission Line       |
|                | Haul Road                        |
|                | Existing Road                    |
|                | Section Boundary                 |
|                | Township/Range Boundary          |
|                | County Boundary                  |



0 500 1,000

0 250 500

Feet

Meters

Base Map: 2017 Aerial Imagery  
 Source: USDA/FSA - APFO  
 Quadrangle: Stockholm (1973)

Township/Range: T119N, R50W & T118N, R50W  
 Grant County, South Dakota

Projection: NAD 1983 UTM Zone 14N



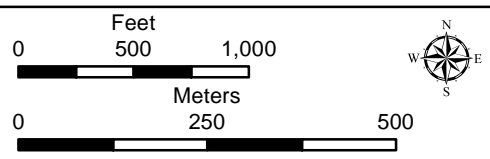




### Site Plan

#### Crowned Ridge I Transmission Line

- |                                    |                                |
|------------------------------------|--------------------------------|
| <b>Structure Type</b>              | ● Self-Support Medium Angle    |
| ● 3-Pole Deadend                   | ● Self-Support Deadend         |
| ● 3-Pole Self-Support Medium Angle | ● Substation Deadend           |
| ● 3-Pole Strain                    | --- Proposed Transmission Line |
| ● H-Frame Light Tangent            | — Haul Road                    |
| ● Heavy Tangent                    | — Existing Road                |
| ● Light Tangent                    | — Section Boundary             |
| ● Self-Support Deadend             | --- Township/Range Boundary    |
| ● Self-Support Light Angle         | --- County Boundary            |



Base Map: 2017 Aerial Imagery  
 Source: USDA/FSA - APFO  
 Quadrange: South Shore (1973), Stockholm (1973)  
 Township/Range: T118N, R50W

Grant County, South Dakota

Projection: NAD 1983 UTM Zone 14N



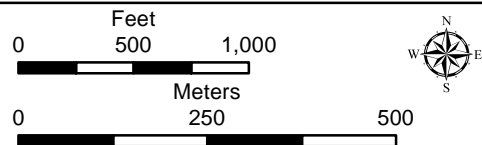
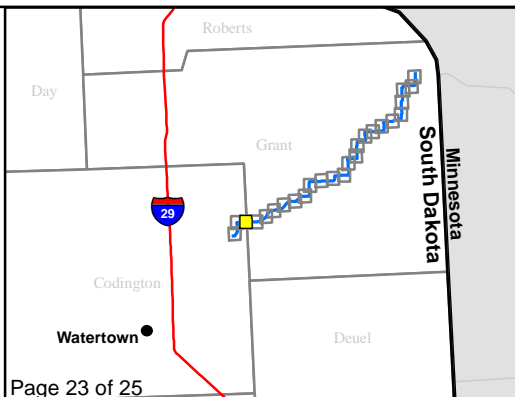




### Site Plan

#### Crowned Ridge I Transmission Line

- |                                  |                            |
|----------------------------------|----------------------------|
| <b>Structure Type</b>            | Self-Support Medium Angle  |
| 3-Pole Deadend                   | Self-Support Deadend       |
| 3-Pole Self-Support Medium Angle | Substation Deadend         |
| 3-Pole Strain                    | Proposed Transmission Line |
| H-Frame Light Tangent            | Haul Road                  |
| Heavy Tangent                    | Existing Road              |
| Light Tangent                    | Section Boundary           |
| Self-Support Deadend             | Township/Range Boundary    |
| Self-Support Light Angle         | County Boundary            |



Base Map: 2017 Aerial Imagery  
 Source: USDA/FSA - APFO  
 Quadrangle: South Shore (1973)

Township/Range: T118N, R50W & T119N, R51W  
 Codington and Grant Counties, South Dakota

Projection: NAD 1983 UTM Zone 14N



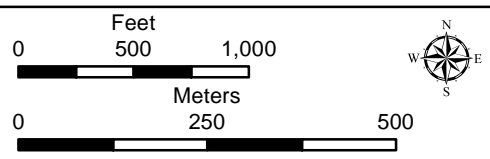
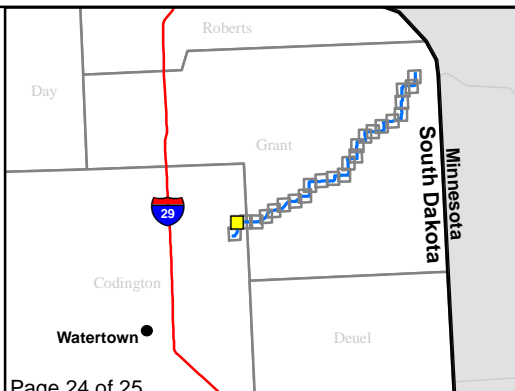




### Site Plan

#### Crowned Ridge I Transmission Line

- |                                  |                            |
|----------------------------------|----------------------------|
| <b>Structure Type</b>            | Self-Support Medium Angle  |
| 3-Pole Deadend                   | Self-Support Deadend       |
| 3-Pole Self-Support Medium Angle | Substation Deadend         |
| 3-Pole Strain                    | Proposed Transmission Line |
| H-Frame Light Tangent            | Haul Road                  |
| Heavy Tangent                    | Existing Road              |
| Light Tangent                    | Section Boundary           |
| Self-Support Deadend             | Township/Range Boundary    |
| Self-Support Light Angle         | County Boundary            |



Base Map: 2017 Aerial Imagery  
 Source: USDA/FSA - APFO  
 Quadrangle: South Shore (1973)

Township/Range: T119N, R51W & T118N, R51W  
 Codington County, South Dakota

Projection: NAD 1983 UTM Zone 14N

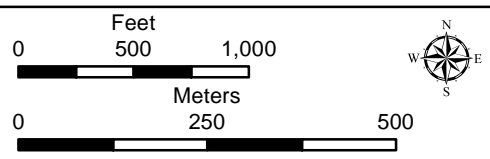




### Site Plan

#### Crowned Ridge I Transmission Line

- Structure Type**
- 3-Pole Deadend
  - 3-Pole Self-Support Medium Angle
  - 3-Pole Strain
  - H-Frame Light Tangent
  - Heavy Tangent
  - Light Tangent
  - Self-Support Deadend
  - Self-Support Light Angle
  - Self-Support Medium Angle
  - Self-Support Deadend
  - Substation Deadend
  - Proposed Transmission Line
  - Haul Road
  - Existing Road
  - Section Boundary
  - Township/Range Boundary
  - County Boundary



Base Map: 2017 Aerial Imagery  
 Source: USDA/FSA - APFO  
 Quadrangle: South Shore (1973)  
 Township/Range: T118N, R51W  
 Codington County, South Dakota  
 Projection: NAD 1983 UTM Zone 14N

