

Crowned Ridge Transmission Line

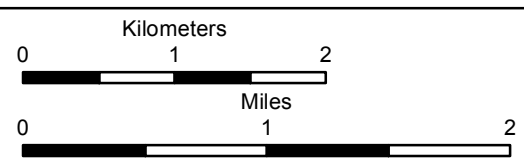
- City
- Proposed Transmission Line
- NHD - Flowline Named Tributary
- NHD Flowline
- State Highway
- Proposed Substation
- Project Study Area (1 mile)
- Lake, Pond, or Riverine Wetland
- Freshwater Emergent Wetland
- Freshwater Forested/Shrub Wetland
- South Dakota Beneficial Use Lake
- FEMA Flood Zone**
- A
- D
- Watershed Boundary (HUC12)
- Township/Range Boundary
- County Boundary
- State Boundary



116 North 4th Street
Suite 200
Bismarck, ND 58501

Phone: 701.258.6622
Fax: 701.258.5957

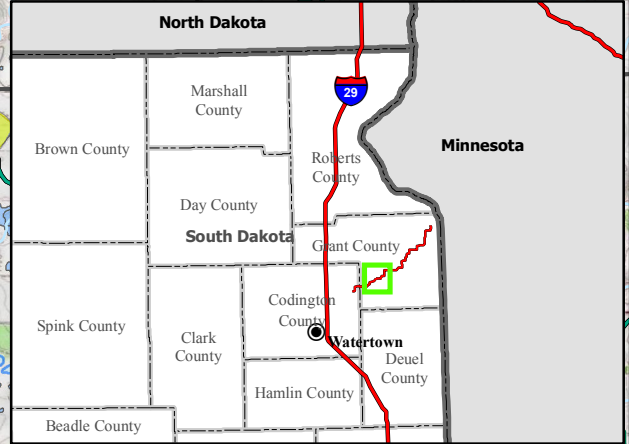
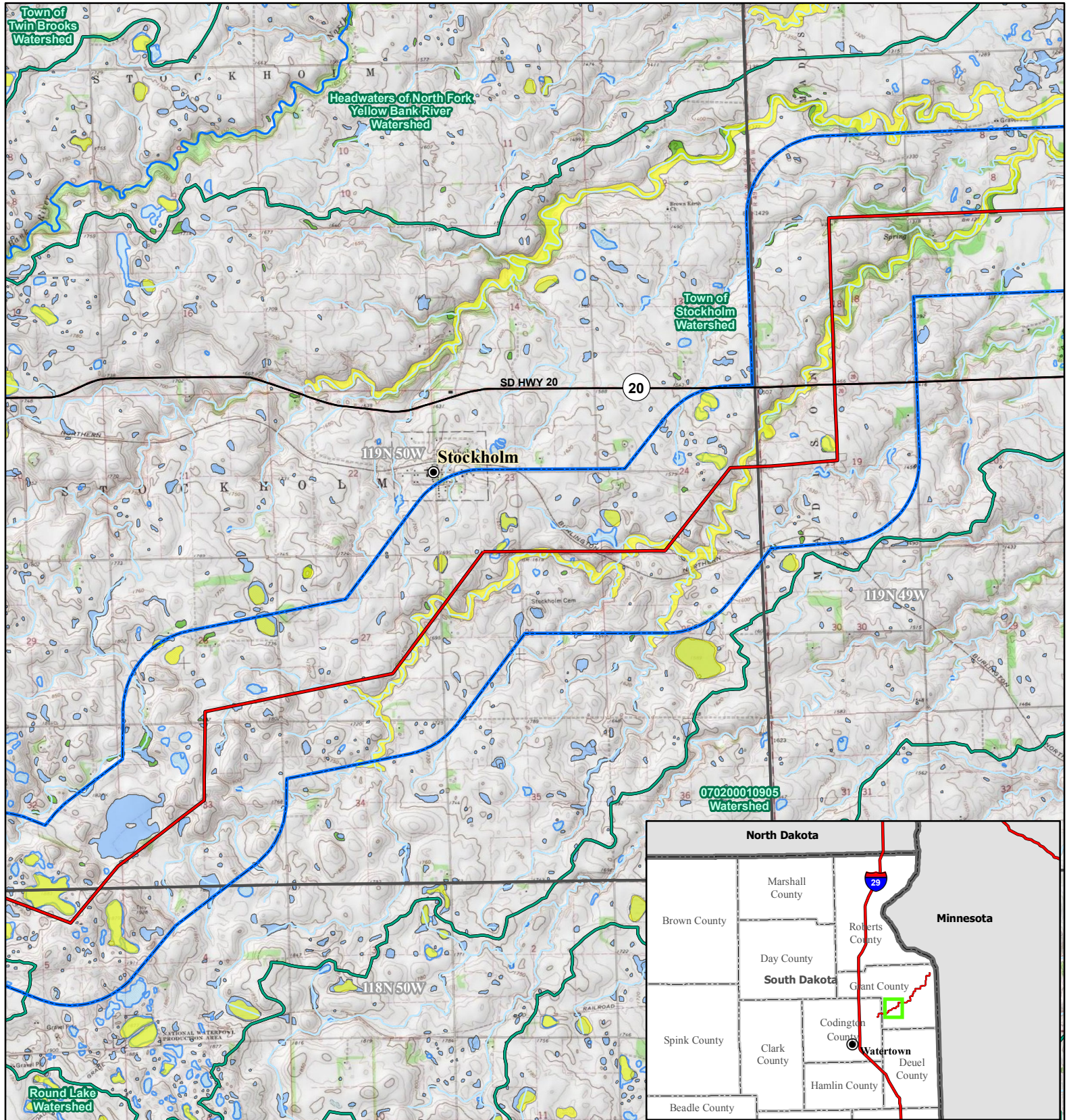
www.swca.com
Page 1 of 5



Base Map: USGS 7.5' Topographic Map
Source: Copyright: ©2014 National Geographic Society, i-cubed
Quadrangle: South Shore (1973), Stockholm (1973)
Township/Range: T. 118N, R. 51W & T. 119N, R. 50W
Codington and Grant Counties, South Dakota

Projection: NAD 1983 UTM Zone 14N





- ### Crowned Ridge Transmission Line
- City
 - Proposed Transmission Line
 - NHD - Flowline
 - Named Tributary
 - NHD Flowline
 - State Highway
 - ▭ Project Study Area (1 mile)
 - ▭ Lake, Pond, or Riverine Wetland
 - ▭ Freshwater Emergent Wetland
 - ▭ Freshwater Forested/Shrub Wetland
- #### FEMA Flood Zone
- ▭ A
 - ▭ Watershed Boundary (HUC12)
 - ▭ Township/Range Boundary
 - ▭ County Boundary
 - ▭ State Boundary

SWCA
ENVIRONMENTAL CONSULTANTS

116 North 4th Street
Suite 200
Bismarck, ND 58501

Phone: 701.258.6622
Fax: 701.258.5957

www.swca.com

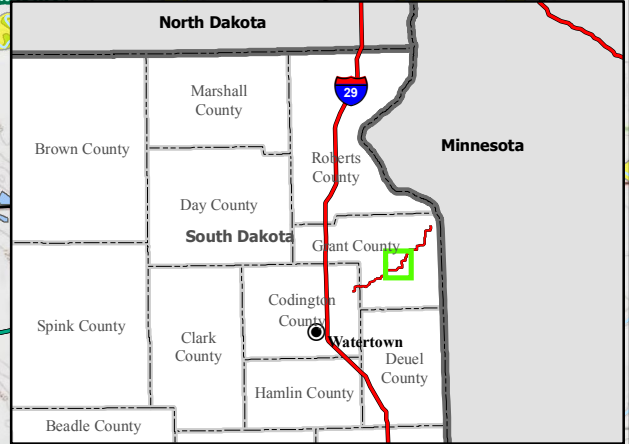
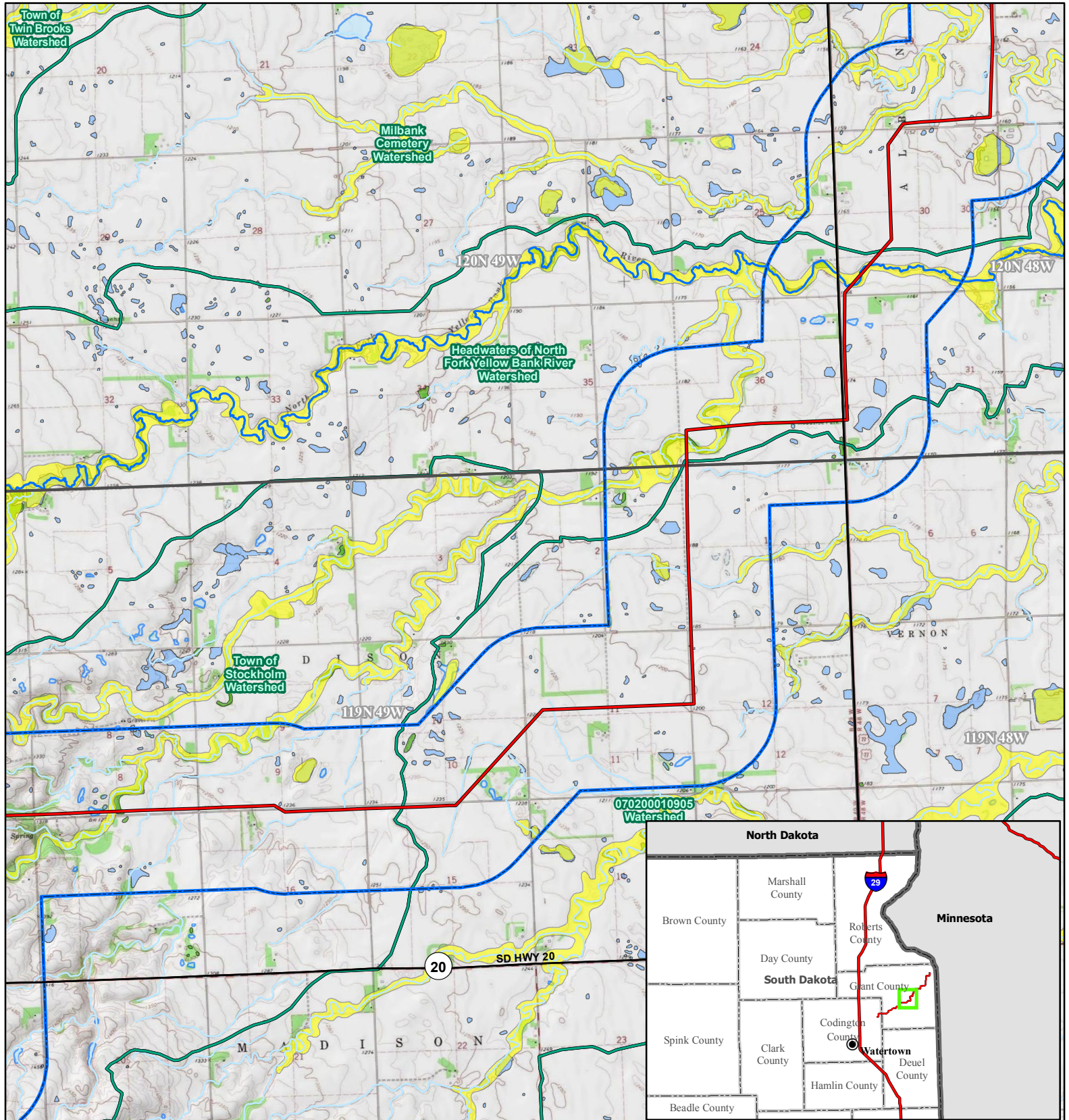
Page 2 of 5

Kilometers
0 1 2

Miles
0 1 2

Base Map: USGS 7.5' Topographic Map
Source: Copyright: ©2014 National Geographic Society, i-cubed
Quadrangle: Stockholm (1973),
La Bolt (1973)
Township/Range: T. 119N, R. 50W &
T. 119N, R. 49W
Grant County, South Dakota

Projection: NAD 1983 UTM Zone 14N



Crowned Ridge Transmission Line

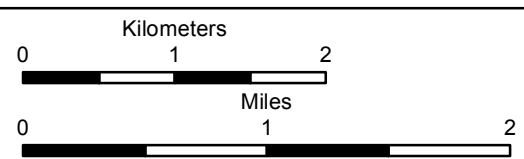
- | | |
|---------------------------------|-----------------------------------|
| Proposed Transmission Line | Freshwater Forested/Shrub Wetland |
| NHD - Flowline | FEMA Flood Zone |
| Named Tributary | A |
| NHD Flowline | Watershed Boundary (HUC12) |
| State Highway | Township/Range Boundary |
| Project Study Area (1 mile) | County Boundary |
| Lake, Pond, or Riverine Wetland | State Boundary |
| Freshwater Emergent Wetland | |



116 North 4th Street
Suite 200
Bismarck, ND 58501

Phone: 701.258.6622
Fax: 701.258.5957

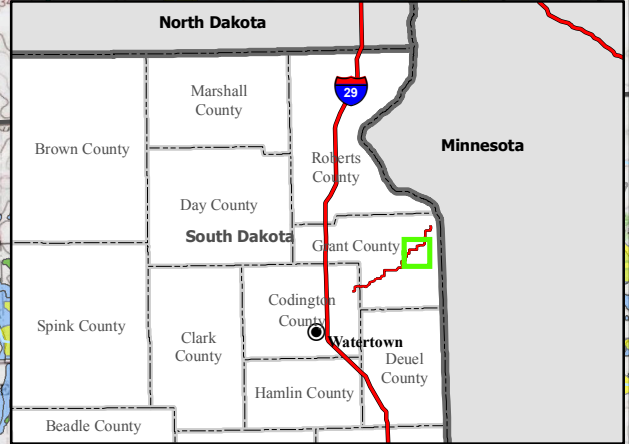
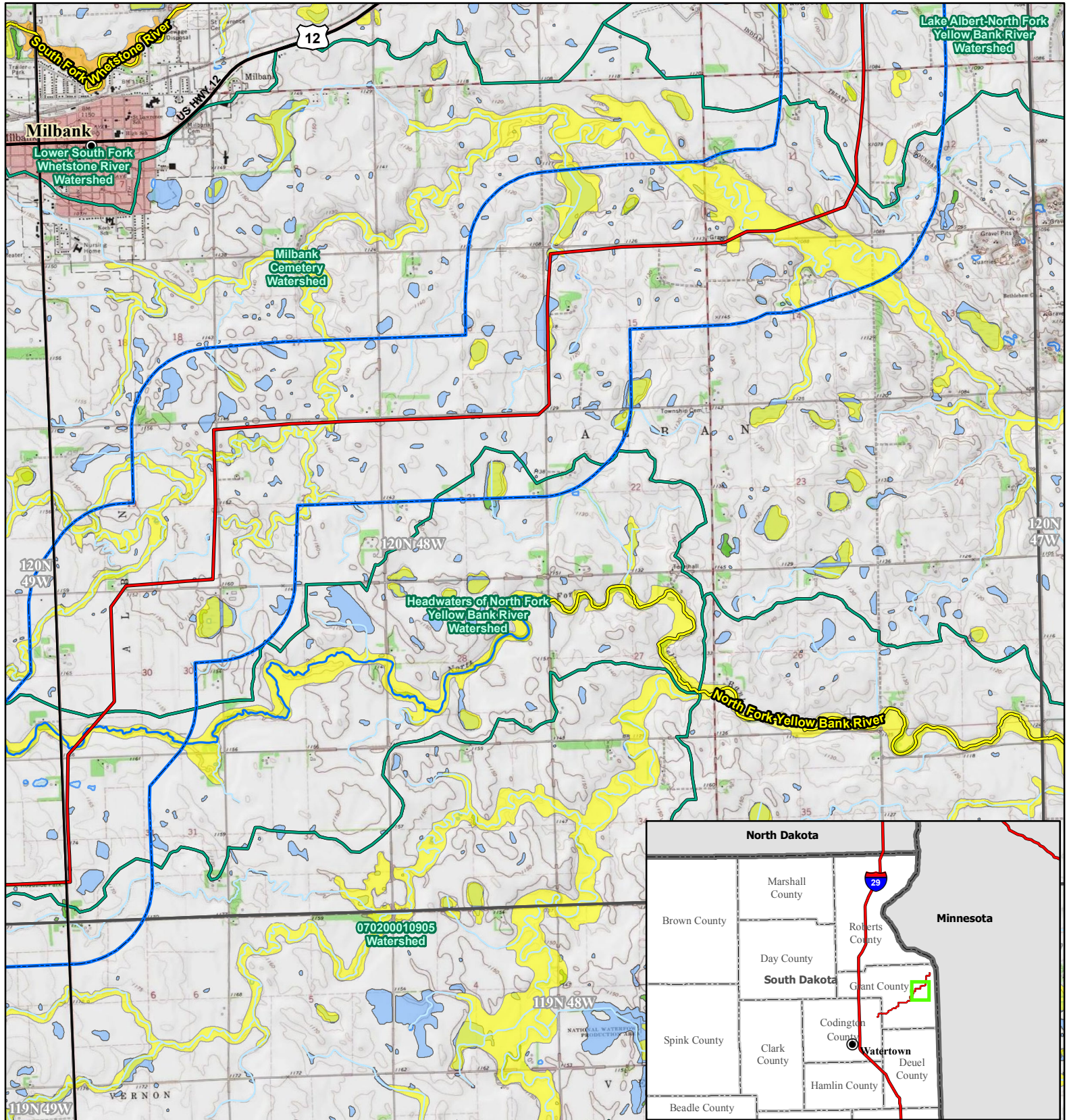
www.swca.com



Base Map: USGS 7.5' Topographic Map
Source: Copyright: ©2014 National Geographic Society, i-cubed
Quadrangle: La Bolt (1973),
Milbank West (1973), Milbank East (1973)
Township/Range: T. 119N, R. 49W &
T. 120N, R. 49W & T. 120N, R. 48W
Grant County, South Dakota

Projection: NAD 1983 UTM Zone 14N





Crowned Ridge Transmission Line

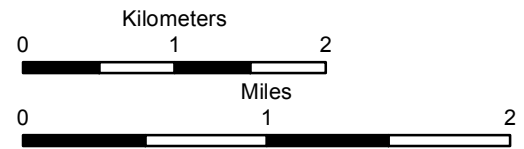
- City
- Proposed Transmission Line
- South Dakota Beneficial Use Stream
- NHD - Flowline
- NHD Flowline
- U.S. Highway
- State Highway
- Project Study Area (1 mile)
- Lake, Pond, or Riverine Wetland
- Freshwater Emergent Wetland
- Freshwater Forested/Shrub Wetland
- FEMA Flood Zone**
- A
- AE
- Watershed Boundary (HUC12)
- Township/Range Boundary
- County Boundary
- State Boundary



116 North 4th Street
Suite 200
Bismarck, ND 58501

Phone: 701.258.6622
Fax: 701.258.5957

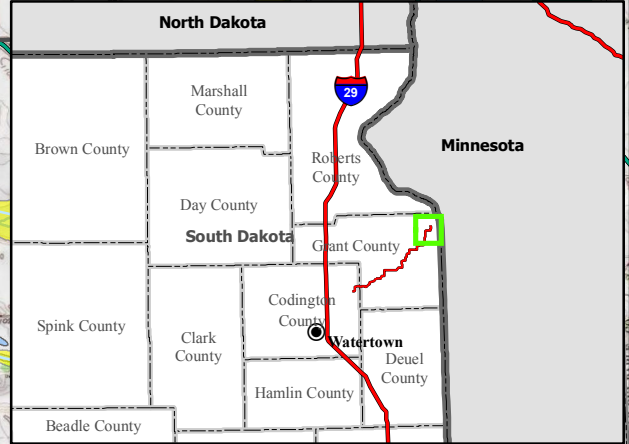
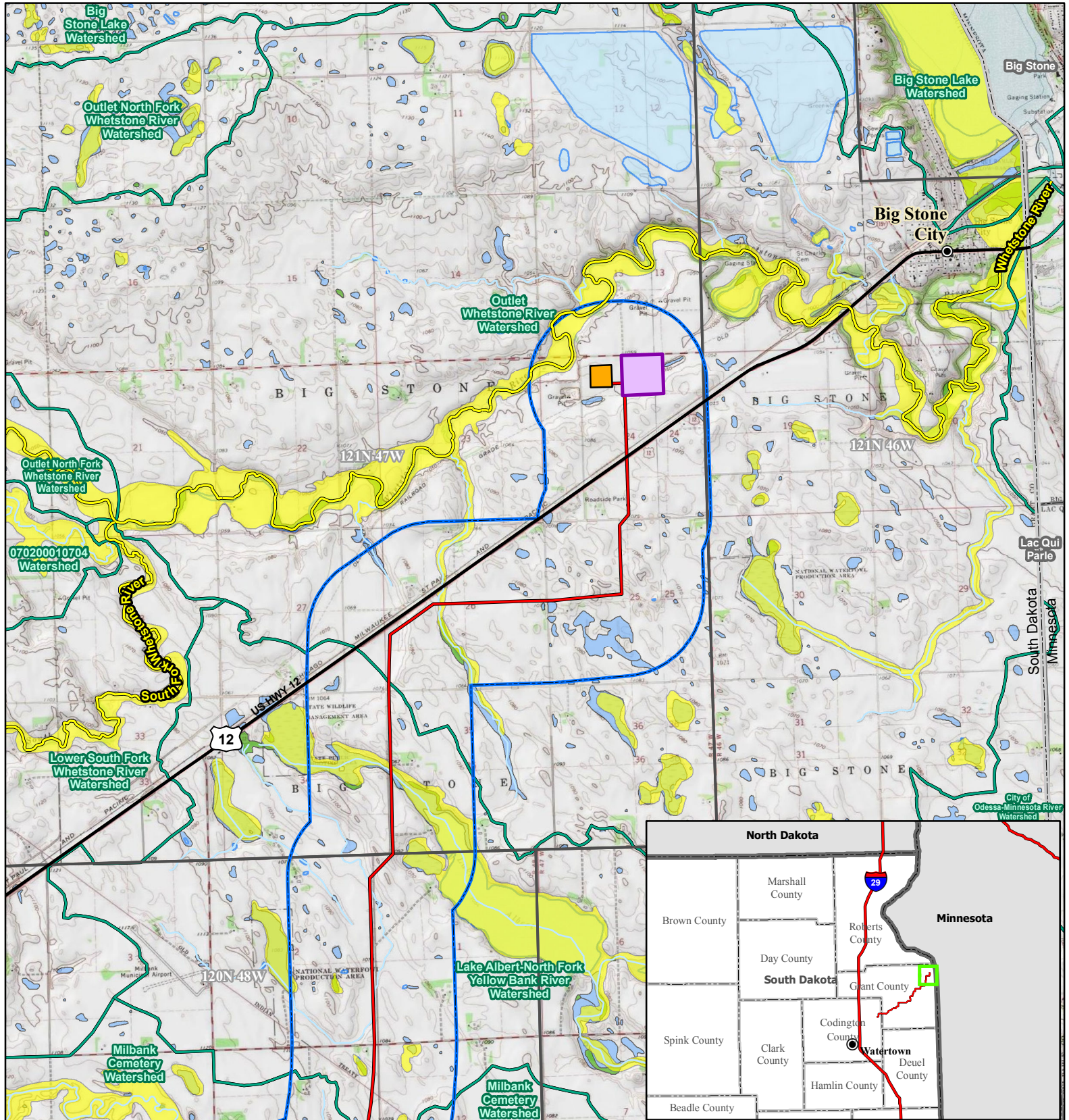
www.swca.com



Base Map: USGS 7.5' Topographic Map
Source: Copyright: ©2014 National Geographic Society, i-cubed
Quadrangle: Milbank West (1973),
Milbank East (1973)
Township/Range: T. 120N, R. 49W &
T. 120N, R. 48W
Grant County, South Dakota

Projection: NAD 1983 UTM Zone 14N





Crowned Ridge Transmission Line

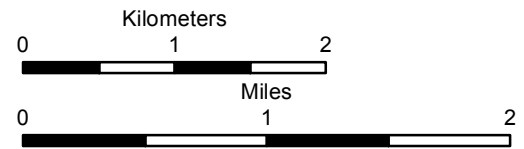
- City
- Proposed Transmission Line
- South Dakota Beneficial Use Stream
- NHD - Flowline
- NHD Named Tributary
- NHD Flowline
- U.S. Highway
- Existing POI Substation
- Land Parcel Containing 12-acre Reactor Station
- Project Study Area (1 mile)
- Lake, Pond, or Riverine Wetland
- Freshwater Emergent Wetland
- Freshwater Forested/Shrub Wetland
- FEMA Flood Zone**
- A
- Watershed Boundary (HUC12)
- Township/Range Boundary
- County Boundary
- State Boundary



116 North 4th Street
Suite 200
Bismarck, ND 58501

Phone: 701.258.6622
Fax: 701.258.5957

www.swca.com



Base Map: USGS 7.5' Topographic Map
Source: Copyright: ©2014 National Geographic Society, i-cubed
Quadrangle: Milbank East (1973),
Big Stone Lake SE (1971)
Township/Range: T. 120N, R. 48W &
T. 120N, R. 47W
Grant County, South Dakota

Projection: NAD 1983 UTM Zone 14N

