

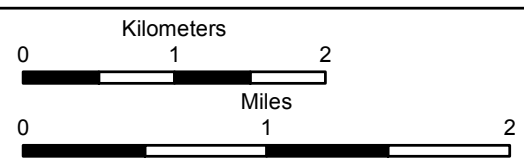
- ### Crowned Ridge Transmission Line
- City
  - Proposed Transmission Line
  - Electrical Line
  - +— Railroad
  - State Highway
  - Proposed Substation
  - ▭ Project Study Area (1 mile)
  - ▭ Township/Range Boundary
  - ▭ County Boundary
  - ▭ State Boundary



116 North 4th Street  
Suite 200  
Bismarck, ND 58501

Phone: 701.258.6622  
Fax: 701.258.5957

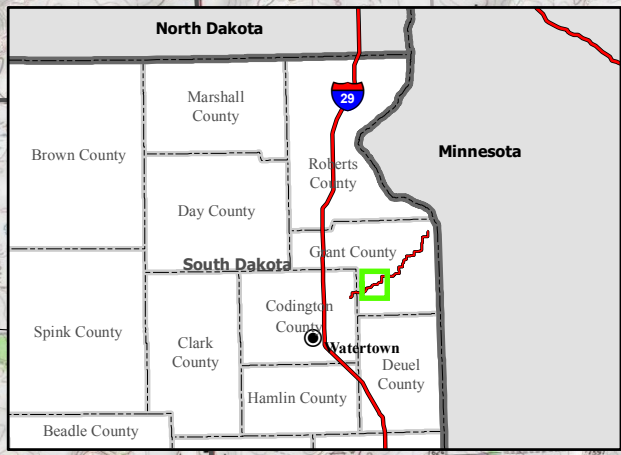
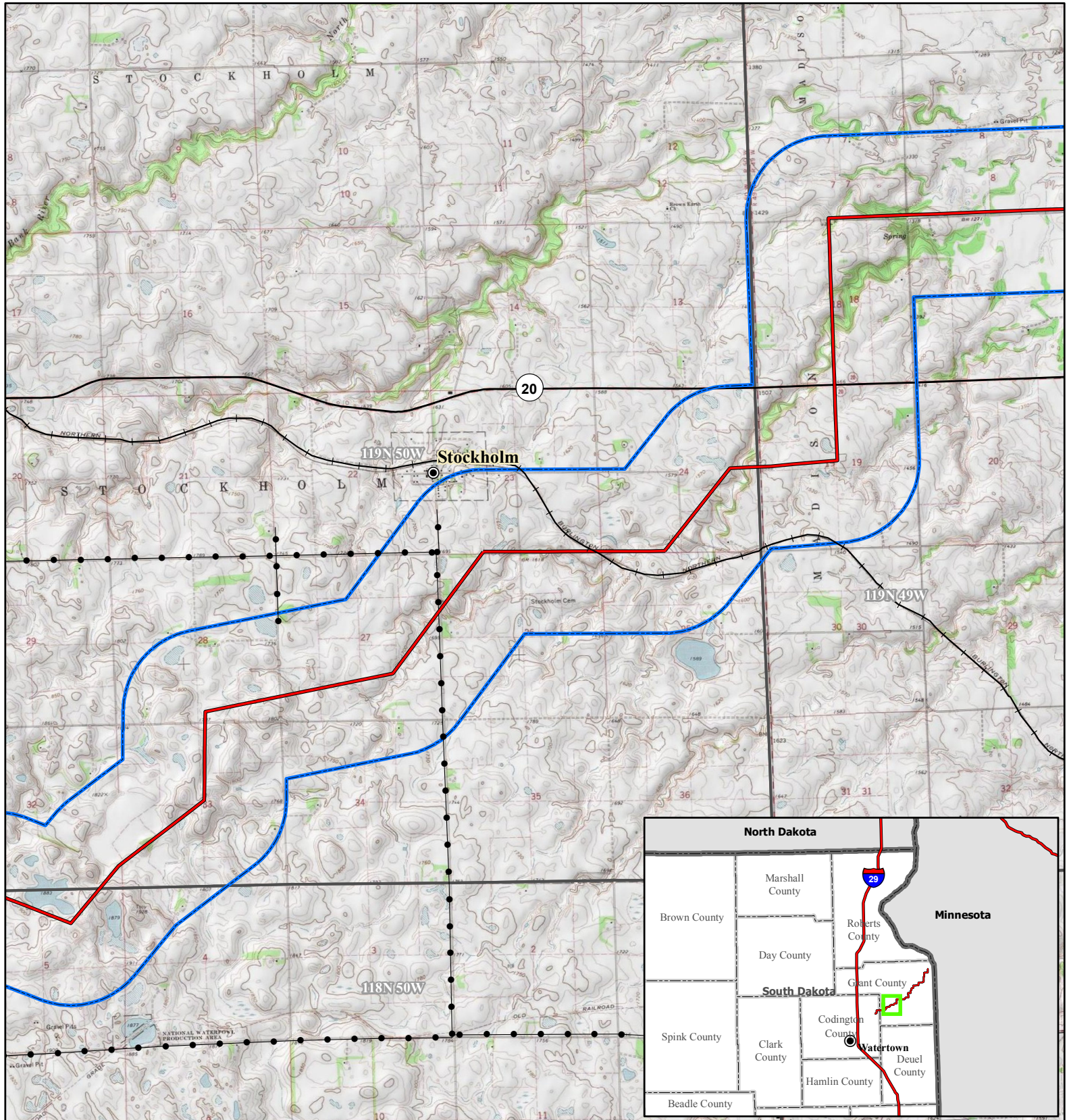
www.swca.com  
Page 1 of 5



Base Map: USGS 7.5' Topographic Map  
Source: Copyright: ©2014 National Geographic Society, i-cubed  
Quadrangle: South Shore (1973),  
Stockholm (1973)  
Township/Range: T. 118N, R. 51W &  
T. 119N, R. 51W & T. 119N, R. 50W  
Codington and Grant Counties, South Dakota

Projection: NAD 1983 UTM Zone 14N





**Crowned Ridge Transmission Line**

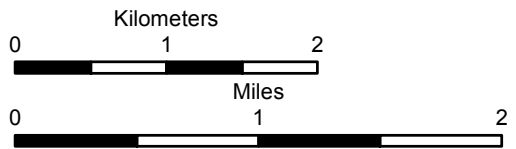
- City
- Proposed Transmission Line
- Electrical Line
- +— Railroad
- State Highway
- Project Study Area (1 mile)
- Township/Range Boundary
- County Boundary
- State Boundary



116 North 4th Street  
Suite 200  
Bismarck, ND 58501

Phone: 701.258.6622  
Fax: 701.258.5957

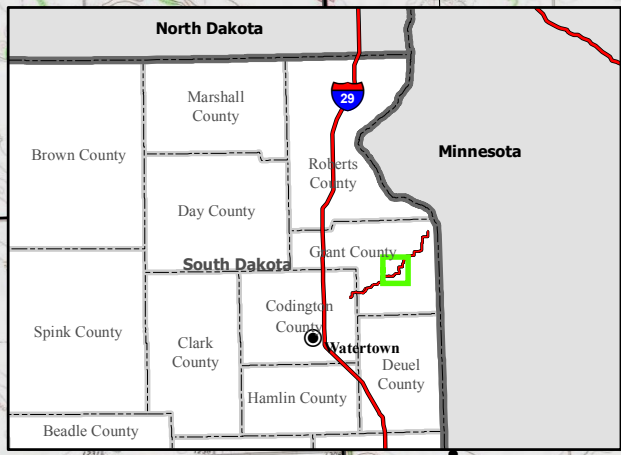
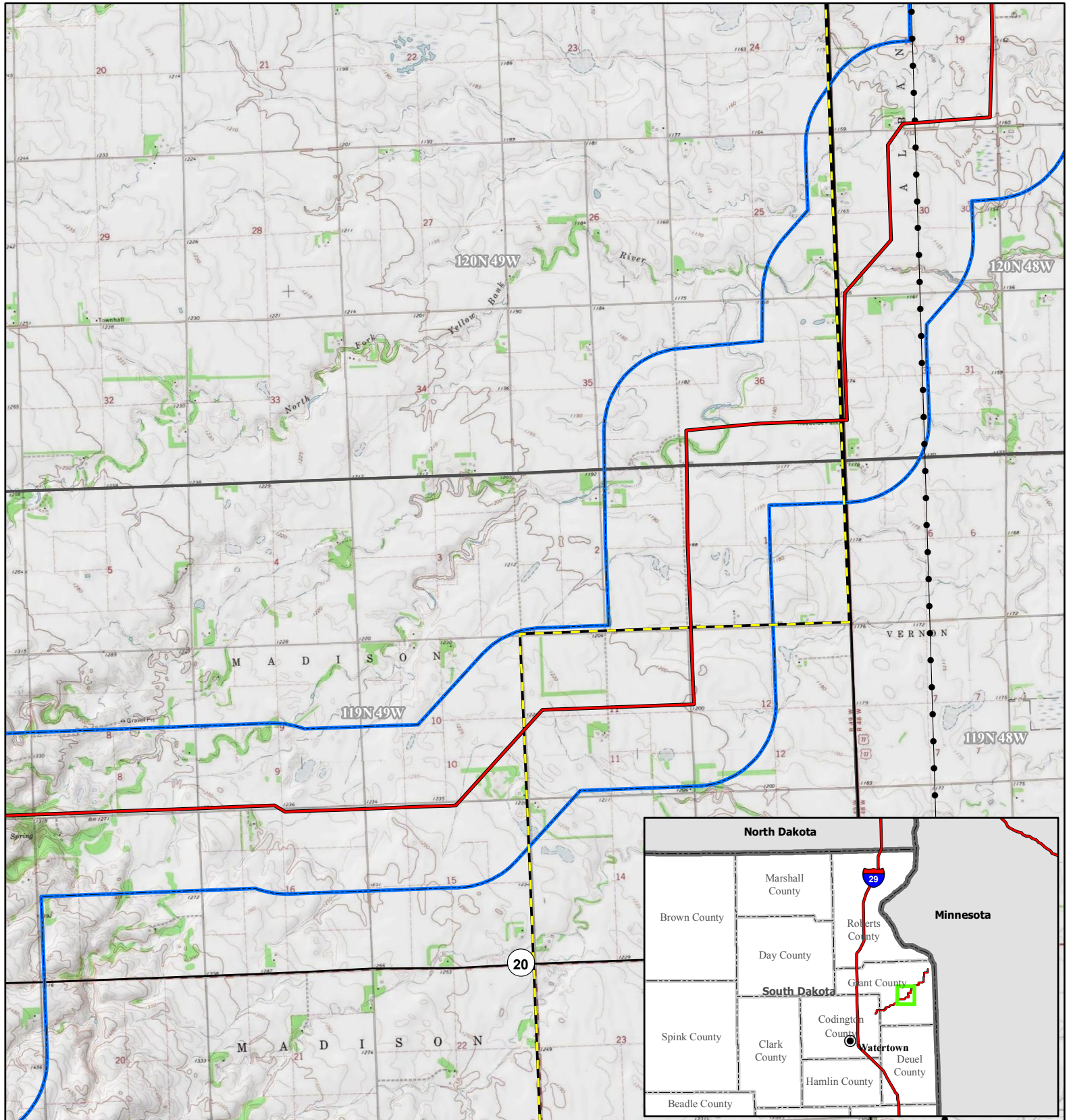
www.swca.com  
Page 2 of 5



Base Map: USGS 7.5' Topographic Map  
Source: Copyright: ©2014 National Geographic Society, i-cubed  
Quadrangle: Stockholm (1973),  
La Bolt (1973)  
Township/Range: T. 119N, R. 50W &  
T. 119N, R. 49W  
Grant County, South Dakota

Projection: NAD 1983 UTM Zone 14N





### Crowned Ridge Transmission Line

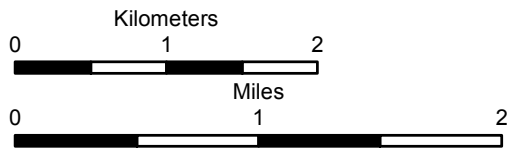
- Proposed Transmission Line
- Electrical Line
- Natural Gas Line
- State Highway
- Project Study Area (1 mile)
- Township/Range Boundary
- County Boundary
- State Boundary



116 North 4th Street  
Suite 200  
Bismarck, ND 58501

Phone: 701.258.6622  
Fax: 701.258.5957

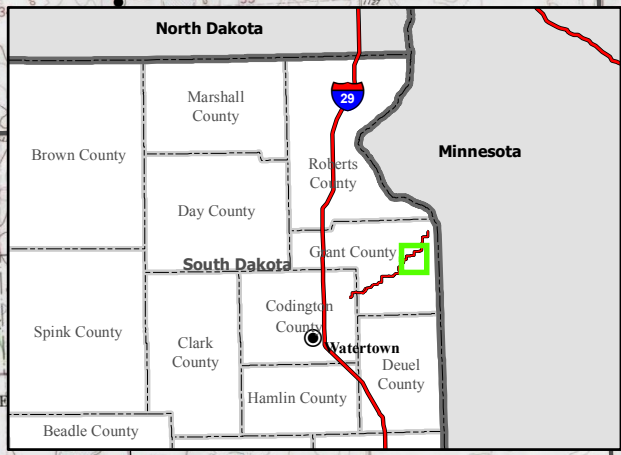
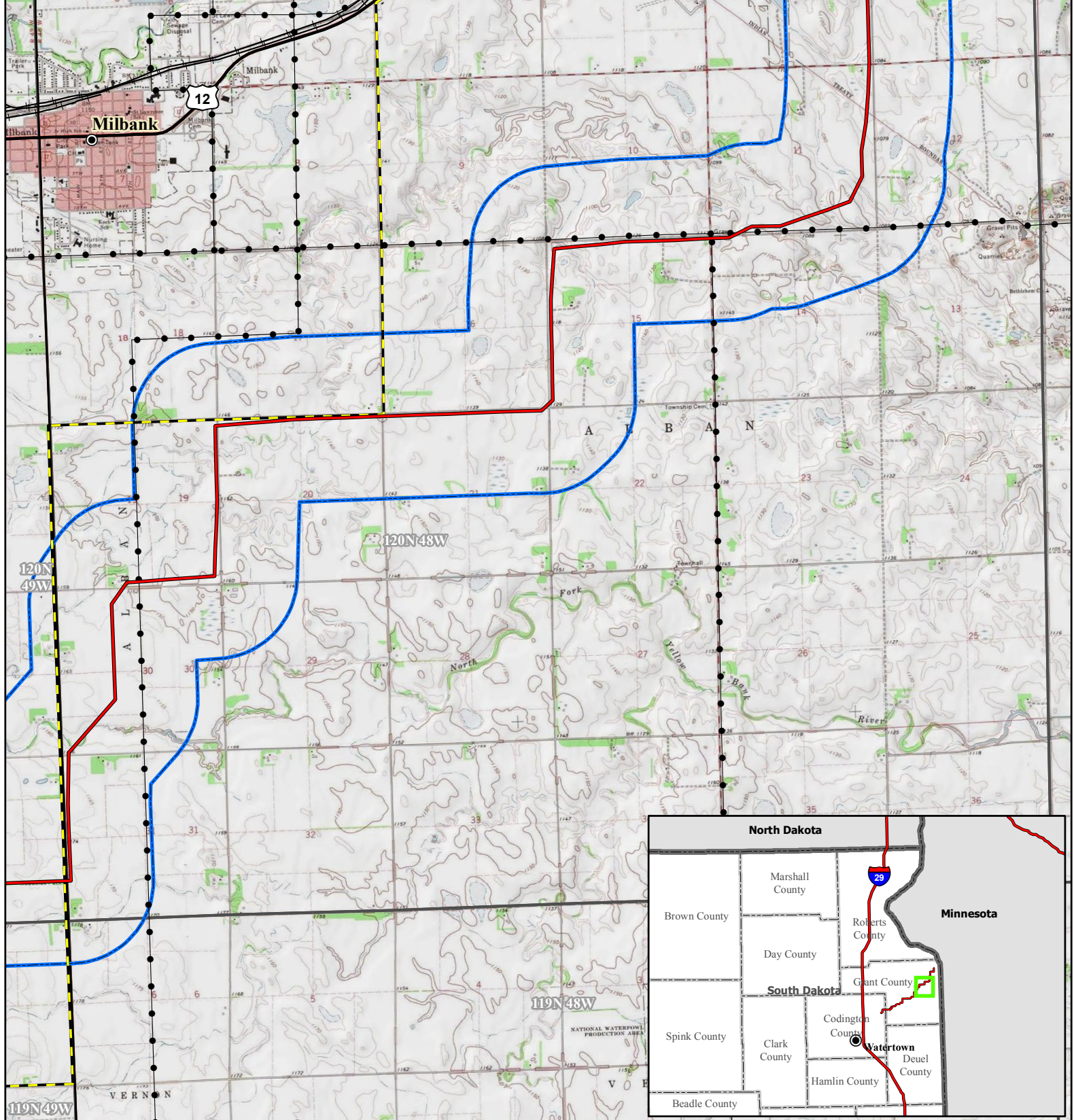
[www.swca.com](http://www.swca.com)



Base Map: USGS 7.5' Topographic Map  
Source: Copyright: ©2014 National Geographic Society, i-cubed  
Quadrangle: La Bolt (1973),  
Milbank West (1973), Milbank East (1973)  
Township/Range: T. 119N, R. 49W &  
T. 120N, R. 49W & T. 120N, R. 48W  
Grant County, South Dakota

Projection: NAD 1983 UTM Zone 14N



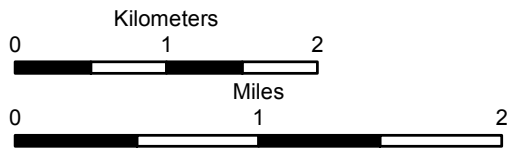


- ### Crowned Ridge Transmission Line
- City
  - State Highway
  - Proposed Transmission Line
  - Electrical Line
  - Natural Gas Line
  - Railroad
  - U.S. Highway
  - Project Study Area (1 mile)
  - Township/Range Boundary
  - County Boundary
  - State Boundary



116 North 4th Street  
Suite 200  
Bismarck, ND 58501  
Phone: 701.258.6622  
Fax: 701.258.5957

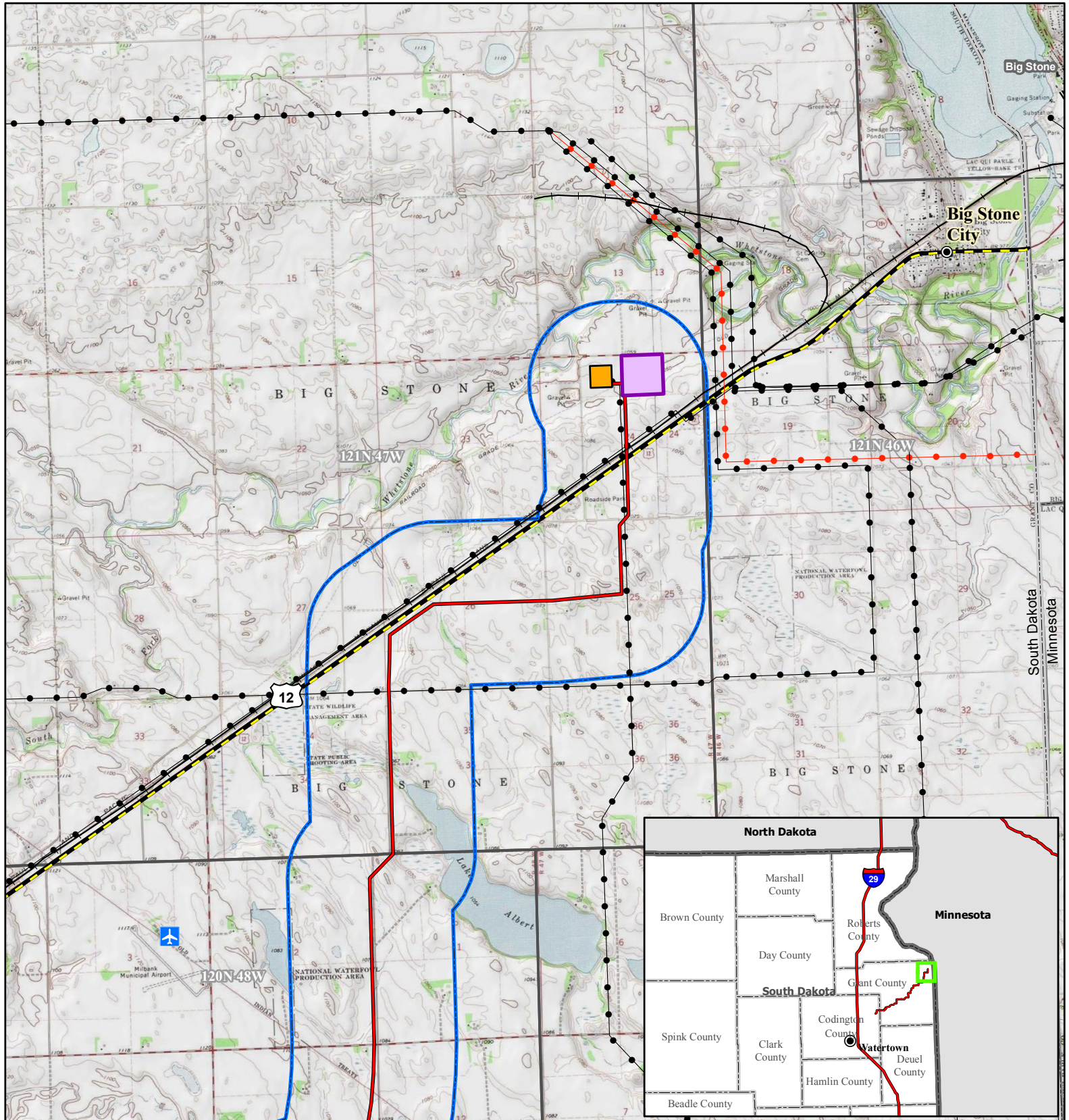
www.swca.com  
Page 4 of 5



Base Map: USGS 7.5' Topographic Map  
Source: Copyright: ©2014 National Geographic Society, i-cubed  
Quadrangle: Milbank West (1973),  
Milbank East (1973)  
Township/Range: T. 120N, R. 49W &  
T. 120N, R. 48W  
Grant County, South Dakota

Projection: NAD 1983 UTM Zone 14N





### Crowned Ridge Transmission Line

- City
- Airport
- Proposed Transmission Line
- Electrical Line
- Natural Gas Line
- Unknown Utility Line
- Railroad
- U.S. Highway
- Existing POI Substation
- Land Parcel Containing 12-acre Reactor Station
- Project Study Area (1 mile)
- Township/Range Boundary
- County Boundary
- State Boundary

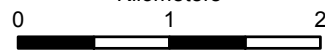


116 North 4th Street  
Suite 200  
Bismarck, ND 58501

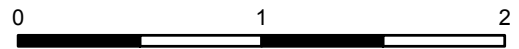
Phone: 701.258.6622  
Fax: 701.258.5957

[www.swca.com](http://www.swca.com)

Kilometers



Miles



Base Map: USGS 7.5' Topographic Map  
Source: Copyright: ©2014 National Geographic Society, i-cubed  
Quadrangle: Milbank East (1973),  
Big Stone Lake SE (1971)  
Township/Range: T. 120N, R. 48W &  
T. 120N, R. 47W  
Grant County, South Dakota

Projection: NAD 1983 UTM Zone 14N

