



Gregg Jongeling
1815 Third Street
Brookings, SD 57006
gjongeling@gmail.com
605-691-4015

Dr. Kimberly Kludt, Superintendent
Deubrook Area School District 5-6
100 School Avenue PO Box 346
White, SD 57276

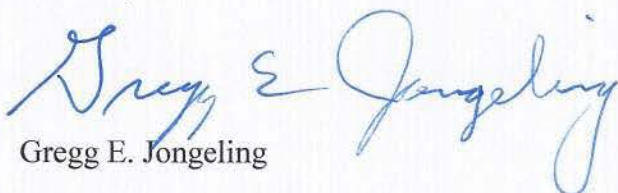
Dear Dr. Kludt:

Otter Tail Power Company is requesting approval from the South Dakota Public Utilities Commission to construct a simple cycle combustion gas turbine electric power generating facility located two miles north and one mile west of Astoria, SD. As required by SDCL 49-41B-6 a Local Review Committee was formed May 9, 2017. One of the items to be considered by the Committee is "Educational facilities and manpower." I have been retained by the Committee to complete the required report which shall include the recommendations of the Committee as to mitigation measures associated with the construction and operation of the Astoria Station.

Construction is slated to begin in the spring of 2020 with a thirteen-month construction cycle. An average of 48 workers with a peak of 70 is anticipated. Once operational the Astoria Station will employ three to five permanent staff. Most of the construction workforce will not move their families into the area during construction. The three to five full time Otter Tail employees will locate in the area and will most likely have children who will attend the Deubrook, Deuel, Estelline or Brookings school districts. The site is located within the Deubrook School District borders.

Enclosed is a questionnaire for your use in providing input to the Committee regarding the possible impact on the Deubrook School District. Please provide your comments and return the questionnaire in the stamped envelope provided. It is my intent to gather the required information as efficiently as possible and to not take any more of your time than is necessary. I am aware that a letter of support was provided previously, but the Committee is charged with getting independent corroboration. Thank you so much for your assistance in this matter.

Sincerely,


Gregg E. Jongeling

DEUBROOK AREA SCHOOLS DISTRICT 5-6

Home of the Dolphins and Lady Dolphins

Toronto Elementary PS-6
PO Box 399, Toronto, SD 57268
(605) 794-1151 – Fax 794-2492

White – Grades 7-12
PO Box 346, White, SD 57276
(605) 629-1101 -- Fax 629-3701

Dr. Kimberly Kludt
Superintendent
(605) 629-1100

Paul Nepodal
7-12 Principal/Activities Director
(605) 629-1114

Kristi Andrews
Business Manager
(605) 629-1102

Mitchell Reed
K-6 Principal
(605) 794-1152

Letter of Support for Astoria Station


The Deubrook Area School District 5-6 believes Astoria Station will have a positive impact on the local and regional economy through tax benefits, infrastructure improvements, and jobs.

Astoria Station will pay property tax totaling approximately \$3 million within the first five years of operation, then approximately \$1 million each subsequent year.

Infrastructure improvements needed for the station could lead to more generation projects in the area, which would benefit the region.

Astoria Station will help Otter Tail Power Company continue to reliably and affordably serve its customers in this region and throughout its service area by providing energy when customers need it—such as when customers are using more energy than usual or when renewable generation conditions aren't ideal.

The Deubrook Area School District 5-6 supports Otter Tail Power Company's proposed Astoria Station.



David Iverson
President
Deubrook Area School District 5-6



Dr. Kimberly Kludt
Superintendent
Deubrook Area School District 5-6

DEUBROOK AREA SCHOOL DISTRICT 5-6 QUESTIONNAIRE

Does the Deubrook Area School District have capacity to add students that may be generated from the Ottertail Power Company's construction of the Astoria Station?

Elementary level Yes X No _____
Middle School level Yes X No _____
High School level Yes _____ No _____

COMMENTS _____

Do you anticipate that the construction of the Ottertail Power Company's Astoria Station will have a positive or negative impact on your educational facilities?

Please Comment Due to our current funding structure, it will have neither a positive nor a negative impact.

Please provide any other comments you may have regarding the construction of the Ottertail Power Company's Astoria Station.

Form completed by: Kimberly Kaldt Date: 11-15-17
Superintendent



2015-2016 Profile of Deubrook Area School District 05-6

100 School Ave, White, SD 57276

Home County: Brookings

Area in Square Miles: 250

Student Data

Fall 2015 PK-12 Enrollment	377
Fall 2015 K-12 Fall Enrollment	366
Fall 2015 State Aid Fall Enrollment	367.00
Open Enrolled Students Rec'd	79
Home School ADM	9.00
December 2015 Federal Child Count	52
% Special Needs Students*	13.8%
% Eligible for Free/Red. Lunch**	28.7%
District Dropout Rate	0.6%
District Attendance Rate	96.8%
Student to Staff Ratio	12.1
Number of Graduates	32

*Child Count data not displayed when student count <10.

**No Free/Red. Lunch Eligible data are displayed when > 90%.

Enrollment Data

	Average Daily Attendance	Average Daily Membersip
PK	11.257	11.731
KG-8	245.455	252.750
9-12	105.488	109.815
Total	362.200	374.296

Cost per ADM*

Educational Funds	\$9,251
-------------------	---------

* Includes selected expenditures from General, Capital Outlay, Special Education and Pension Funds

Teaching Staff Data

Average Teacher Salary	\$38,396
Avg Years of Experience	16.8
% with Advanced Degrees	31.3%
Certified Instructional Staff	30.1
Classroom Staff	1.0

State Aid

General Aid	\$969,761
Special Education	\$0
Sparsity	\$0
Extraordinary Cost Fund*	\$0
Total State Aid	\$969,761

* Represents approved amount paid to district.

Accountability Data*

Reading % Proficient/Advanced	55.93 %
Math % Proficient/Advanced	48.59 %
4-year Cohort Graduation Rate	88.89 %
High School Completion Rate	100 %

*No data displayed if the subgroup does not meet the minimum size for reporting purposes.

Ending Fund Balance

General	\$1,015,666
Capital Outlay	\$932,925
Special Education	\$209,924
Pension	\$199,622
Impact Aid	\$0

American College Test (ACT) *

English	21.7
Math	23.3
Reading	23.0
Science	22.4
Composite Score	22.7
Number Tested	24

*No ACT data displayed when less than ten students are reported.

2015 Payable 2016 Taxable Valuations

Agricultural	\$287,238,988
Owner Occupied	\$68,178,376
Other Non-Ag/Utilities	\$35,517,763
Total	\$390,935,127

2015 Payable 2016 Levy per Thousand

Agricultural	\$1.782
Owner Occupied	\$4.631
Other Non-Ag/Utilities	\$9.918
Special Education	\$1.409
Capital Outlay	\$3.000
Bond Redemption	\$0.000
Pension Fund	\$0.300

*District has opted out of General Fund levy

Deubrook Area School District 05-6

Revenue by Fund

	General	Capital Outlay	Special Education	Pension	Other Fund Data		
					Revenue	Expenditures	
Local	\$1,336,532	\$1,134,242	\$543,019	\$113,402	Impact Aid	\$0	
County	\$37,246	\$751	\$370	\$75	Bond Redemption	\$0	\$0
State	\$1,453,170	\$0	\$0	\$0	Capital Projects	\$0	\$0
Federal	\$86,477	\$0	\$0	\$0	Food Service	\$167,580	\$193,910
Total	\$2,913,425	\$1,134,993	\$543,389	\$113,477	Other Enterprise	\$8,427	\$26,543

Expenditure by Fund

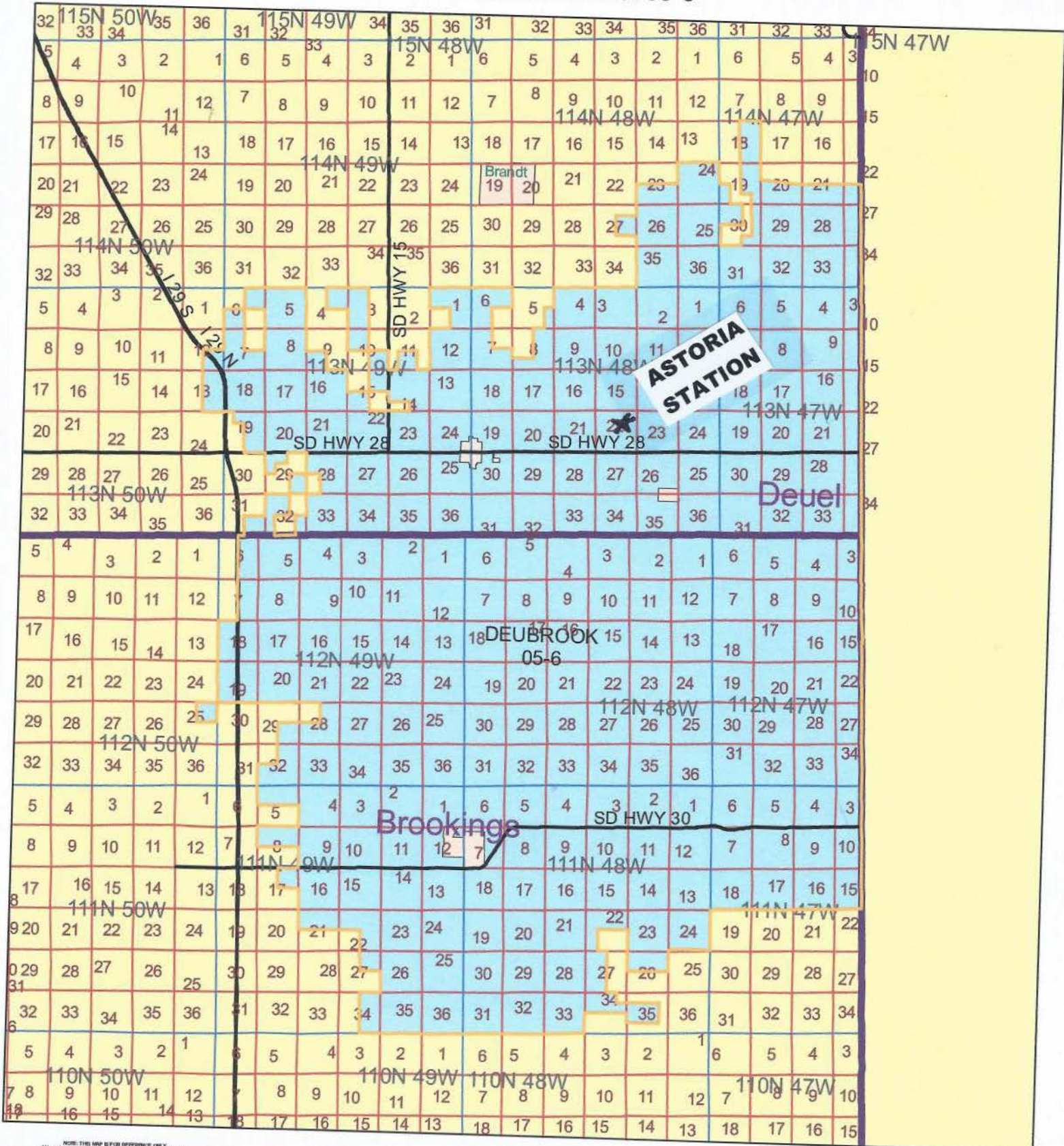
	General	Capital Outlay	Special Education	Pension
K-12 Instruction	\$1,525,971	\$195,599	\$332,641	\$62,215
PK Instruction	\$0	\$0	\$5,073	\$1,083
Adult Instruction	\$0	\$0	\$0	\$0
Student/Staff Services	\$252,660	\$21,515	\$36,826	\$6,811
Administration Services	\$302,529	\$1,902	\$0	\$11,274
Fiscal Services	\$76,167	\$4,430	\$0	\$2,795
Fac./Acquis./Const. Services	\$0	\$119,075	\$0	\$0
Operation/Maint. Services	\$381,184	\$33,565	\$0	\$7,695
Transportation Services	\$0	\$218,035	\$0	\$0
Other Support Services	\$0	\$12,926	\$0	\$3,675
Community Services	\$0	\$0	\$0	\$157
Non-Programmed	\$0	\$0	\$0	\$2,810
Debt Service	\$0	\$268,473	\$0	\$0
Co-Curricular	\$136,068	\$36,518	\$0	\$3,024
Total Expenditures	\$2,674,579	\$912,038	\$374,540	\$101,539

Expenditure by Object Categories*

	Salary	Benefit	Purchased Service	Supply	Property	Other
K-12 Instruction	\$1,331,868	\$436,997	\$82,482	\$263,668	\$0	\$1,412
PK Instruction	\$18,050	\$6,286	\$5,073	\$0	\$0	\$0
Adult Instruction	\$0	\$0	\$0	\$0	\$0	\$0
Student/Staff Services	\$190,582	\$55,404	\$45,248	\$17,478	\$9,101	\$0
Administration Services	\$197,125	\$78,409	\$25,999	\$8,101	\$0	\$6,071
Fiscal Services	\$50,432	\$24,936	\$1,243	\$5,741	\$0	\$1,040
Fac./Acquis./Const. Services	\$0	\$0	\$80,830	\$28,247	\$9,998	\$0
Operation/Maint. Services	\$141,137	\$68,400	\$157,261	\$27,842	\$0	\$27,805
Transportation Services	\$0	\$0	\$218,035	\$0	\$0	\$0
Other Support Services	\$61,621	\$23,698	\$9,969	\$96,804	\$11,448	\$6,971
Community Services	\$2,620	\$358	\$0	\$470	\$0	\$0
Non-Programmed	\$2,610	\$200	\$0	\$0	\$0	\$0
Debt Service	\$0	\$0	\$0	\$0	\$0	\$268,473
Co-Curricular	\$84,315	\$10,146	\$28,427	\$46,996	\$0	\$5,726
Total Expenditures	\$2,080,360	\$704,834	\$654,567	\$495,347	\$30,547	\$317,498

*Expenditure category data in the above table includes the sum of ALL K-12 funds operated by the district.

Deubrook School District 05-6



NOTE: THIS MAP IS FOR REFERENCE ONLY. Although every effort has been made to ensure the accuracy of information, errors and omissions originating from the physical map are used to describe the district are not reflected on this map. The user must be aware of the site conditions and ultimately bear responsibility for the appropriate use of the information with respect to possible maps, original data, software, methodology, currency of data, and other conditions specific to each data.



Prepared July 2008





Gregg Jongeling
1815 Third Street
Brookings, SD 57006
gjongeling@gmail.com
605-691-4015

Mr. Chad Schiernbeck, Superintendent
Deuel School District 19-4
410 5th Street W.
Clear Lake, SD 57226-0770

Dear Mr. Schiernbeck:

Otter Tail Power Company is requesting approval from the South Dakota Public Utilities Commission to construct a simple cycle combustion gas turbine electric power generating facility located two miles north and one mile west of Astoria, SD. As required by SDCL 49-41B-6 a Local Review Committee was formed May 9, 2017. One of the items to be considered by the Committee is "Educational facilities and manpower." I have been retained by the Committee to complete the required report which shall include the recommendations of the Committee as to mitigation measures associated with the construction and operation of the Astoria Station.

Construction is slated to begin in the spring of 2020 with a thirteen-month construction cycle. An average of 48 workers with a peak of 70 is anticipated. Once operational the Astoria Station will employ three to five permanent staff. Most of the construction workforce will not move their families into the area during construction. The three to five full time Otter Tail employees will locate in the area and will most likely have children who will attend the Deubrook, Deuel, Estelline or Brookings school districts.

Enclosed is a questionnaire for your use in providing input to the Committee regarding the possible impact on the Deuel School District. Please provide your comments and return the questionnaire in the stamped envelope provided. It is my intent to gather the required information as efficiently as possible and to not take any more of your time than is necessary. Thank you so much for your assistance in this matter.

Sincerely,


Gregg E. Jongeling

DEUEL SCHOOL DISTRICT 19-4 QUESTIONNAIRE

Does the Deuel School District have capacity to add students that may be generated from the Ottertail Power Company's construction of the Astoria Station?

Elementary level Yes No

Middle School level Yes No

High School level Yes No

COMMENTS We do have the capacity to accomodate
additional students. We are a two section
school and run a four day school week.

Do you anticipate that the construction of the Ottertail Power Company's Astoria Station will have a positive or negative impact on the educational facilities in the area surrounding the site?

Please Comment I would hope that the construction
of this facility would have a positive
impact on area schools but I can't
predict the impact.

Please provide any other comments you may have regarding the construction of the Ottertail Power Company's Astoria Station.

N/A

Form completed by: Chad Schimber Date: 11-14-17

2015-2016 Profile of Deuel School District 19-4

410 5th St W, Clear Lake, SD 57226-0770

Home County: Deuel

Area in Square Miles: 409

Student Data

Fall 2015 PK-12 Enrollment	533
Fall 2015 K-12 Fall Enrollment	501
Fall 2015 State Aid Fall Enrollment	502.85
Open Enrolled Students Rec'd	29
Home School ADM	23.15
December 2015 Federal Child Count	64
% Special Needs Students*	12.0%
% Eligible for Free/Red. Lunch**	29.1%
District Dropout Rate	0.0%
District Attendance Rate	95.7%
Student to Staff Ratio	14.1
Number of Graduates	33

*Child Count data not displayed when student count <10.

**No Free/Red. Lunch Eligible data are displayed when > 90%.

Enrollment Data

	Average Daily Attendance	Average Daily Membersip
PK	32.690	34.131
KG-8	333.440	346.713
9-12	141.149	149.122
Total	507.279	529.966

Cost per ADM*

Educational Funds	\$7,730
-------------------	---------

* Includes selected expenditures from General, Capital Outlay, Special Education and Pension Funds

Teaching Staff Data

Average Teacher Salary	\$38,877
Avg Years of Experience	14.8
% with Advanced Degrees	24.3%
Certified Instructional Staff	35.3
Classroom Staff	2.5

State Aid

General Aid	\$1,099,720
Special Education	\$0
Sparsity	\$0
Extraordinary Cost Fund*	\$0
Total State Aid	\$1,099,720

* Represents approved amount paid to district.

Accountability Data*

Reading % Proficient/Advanced	56.43 %
Math % Proficient/Advanced	46.89 %
4-year Cohort Graduation Rate	87.88 %
High School Completion Rate	100 %

*No data displayed if the subgroup does not meet the minimum size for reporting purposes.

Ending Fund Balance

General	\$2,021,377
Capital Outlay	\$1,581,766
Special Education	\$104,108
Pension	\$157,081
Impact Aid	\$0

American College Test (ACT) *

English	20.0
Math	21.6
Reading	21.7
Science	22.9
Composite Score	21.6
Number Tested	19

*No ACT data displayed when less than ten students are reported.

2015 Payable 2016 Taxable Valuations

Agricultural	\$365,267,331
Owner Occupied	\$97,763,940
Other Non-Ag/Utilities	\$62,396,384
Total	\$525,427,655

2015 Payable 2016 Levy per Thousand

Agricultural	\$1.568
Owner Occupied	\$4.075
Other Non-Ag/Utilities	\$8.727
Special Education	\$1.409
Capital Outlay	\$2.500
Bond Redemption	\$0.000
Pension Fund	\$0.300

Deuel School District 19-4

Revenue by Fund

	General	Capital Outlay	Special Education	Pension	Other Fund Data		
					Revenue	Expenditures	
Local	\$1,888,577	\$1,208,389	\$730,100	\$144,734	Impact Aid	\$0	
County	\$43,840	\$1,569	\$1,052	\$193	Bond Redemption	\$0	\$0
State	\$1,154,702	\$0	\$0	\$0	Capital Projects	\$0	\$0
Federal	\$91,934	\$26,339	\$0	\$0	Food Service	\$240,958	\$221,758
Total	\$3,179,053	\$1,236,297	\$731,152	\$144,927	Other Enterprise	\$22,121	\$18,828

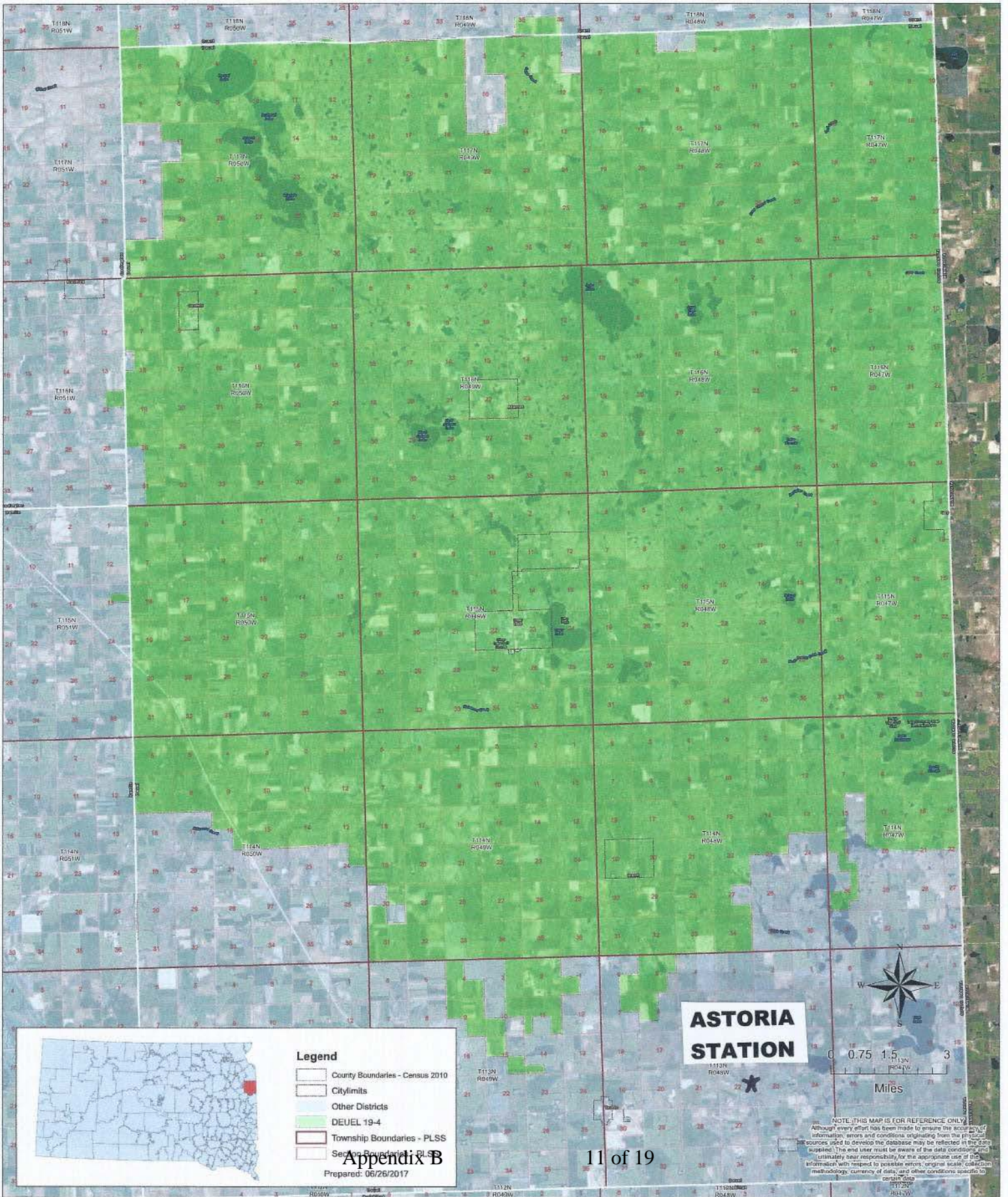
Expenditure by Fund

	General	Capital Outlay	Special Education	Pension
K-12 Instruction	\$1,764,729	\$148,054	\$476,750	\$0
PK Instruction	\$43,555	\$0	\$8,695	\$0
Adult Instruction	\$0	\$0	\$0	\$0
Student/Staff Services	\$195,678	\$13,825	\$65,577	\$0
Administration Services	\$378,671	\$9,073	\$881	\$0
Fiscal Services	\$126,107	\$7,093	\$0	\$0
Fac./Acquis./Const. Services	\$0	\$0	\$0	\$0
Operation/Maint. Services	\$274,835	\$545,717	\$0	\$0
Transportation Services	\$184,980	\$129,362	\$0	\$0
Other Support Services	\$14,036	\$2,636	\$75,387	\$0
Community Services	\$0	\$0	\$0	\$0
Non-Programmed	\$0	\$0	\$0	\$20,770
Debt Service	\$0	\$422,659	\$0	\$0
Co-Curricular	\$177,233	\$31,536	\$0	\$0
Total Expenditures	\$3,159,824	\$1,309,955	\$627,290	\$20,770

Expenditure by Object Categories*

	Salary	Benefit	Purchased Service	Supply	Property	Other
K-12 Instruction	\$1,549,435	\$484,127	\$182,316	\$177,401	\$0	\$785
PK Instruction	\$43,725	\$12,957	\$8,695	\$1,170	\$0	\$0
Adult Instruction	\$0	\$0	\$0	\$0	\$0	\$0
Student/Staff Services	\$146,864	\$36,540	\$73,184	\$14,198	\$4,294	\$0
Administration Services	\$238,278	\$103,139	\$28,554	\$5,148	\$0	\$13,506
Fiscal Services	\$84,669	\$34,825	\$4,741	\$7,648	\$599	\$719
Fac./Acquis./Const. Services	\$0	\$0	\$0	\$0	\$0	\$0
Operation/Maint. Services	\$107,580	\$50,777	\$576,693	\$55,421	\$0	\$30,081
Transportation Services	\$109,043	\$22,857	\$51,883	\$49,215	\$77,008	\$4,335
Other Support Services	\$67,290	\$35,915	\$78,828	\$130,329	\$0	\$1,456
Community Services	\$0	\$0	\$0	\$0	\$0	\$0
Non-Programmed	\$19,916	\$854	\$0	\$0	\$0	\$0
Debt Service	\$0	\$0	\$0	\$0	\$0	\$422,659
Co-Curricular	\$106,386	\$13,143	\$56,172	\$33,069	\$0	\$0
Total Expenditures	\$2,473,186	\$795,134	\$1,061,066	\$473,599	\$81,901	\$473,541

*Expenditure category data in the above table includes the sum of ALL K-12 funds operated by the district.



Legend

- County Boundaries - Census 2010
- City Limits
- Other Districts
- DEUEL 19-4
- Township Boundaries - PLSS
- School Boundaries - PLSS

Prepared: 06/26/2017

ASTORIA STATION





Gregg Jongeling
1815 Third Street
Brookings, SD 57006
gjongeling@gmail.com
605-691-4015

Mr. Jim Lentz, Superintendent
Estelline School District 28-2
708 Davis Avenue
Estelline, SD 57234-0306

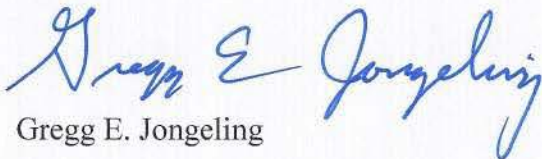
Dear Mr. Lentz:

Otter Tail Power Company is requesting approval from the South Dakota Public Utilities Commission to construct a simple cycle combustion gas turbine electric power generating facility located two miles north and one mile west of Astoria, SD. As required by SDCL 49-41B-6 a Local Review Committee was formed May 9, 2017. One of the items to be considered by the Committee is "Educational facilities and manpower." I have been retained by the Committee to complete the required report which shall include the recommendations of the Committee as to mitigation measures associated with the construction and operation of the Astoria Station.

Construction is slated to begin in the spring of 2020 with a thirteen-month construction cycle. An average of 48 workers with a peak of 70 is anticipated. Once operational the Astoria Station will employ three to five permanent staff. Most of the construction workforce will not move their families into the area during construction. The three to five full time Otter Tail employees will locate in the area and will most likely have children who will attend the Deubrook, Deuel, Estelline or Brookings school districts.

Enclosed is a questionnaire for your use in providing input to the Committee regarding the possible impact on the Estelline School District. Please provide your comments and return the questionnaire in the stamped envelope provided. It is my intent to gather the required information as efficiently as possible and to not take any more of your time than is necessary. Thank you so much for your assistance in this matter.

Sincerely,


Gregg E. Jongeling

ESTELLINE SCHOOL DISTRICT 28-2 QUESTIONNAIRE

Does the Estelline School District have capacity to add students that may be generated from the Ottertail Power Company's construction of the Astoria Station?

Elementary level	Yes <input checked="" type="checkbox"/>	No <input type="checkbox"/>
Junior High School level	Yes <input checked="" type="checkbox"/>	No <input type="checkbox"/>
High School level	Yes <input checked="" type="checkbox"/>	No <input type="checkbox"/>

COMMENTS _____

Do you anticipate that the construction of the Ottertail Power Company's Astoria Station will have a positive or negative impact on the educational facilities in the area surrounding the site?

Please Comment Positive

Please provide any other comments you may have regarding the construction of the Ottertail Power Company's Astoria Station.

Form completed by: Jim Lentz Date: 11-13-17



south dakota DEPARTMENT OF EDUCATION

Learning. Leadership. Service.

2015-2016 Profile of Estelline School District 28-2

708 Davis Ave, Estelline, SD 57234-0306

Home County: Hamlin

Area in Square Miles: 169

Student Data

Fall 2015 PK-12 Enrollment	269
Fall 2015 K-12 Fall Enrollment	242
Fall 2015 State Aid Fall Enrollment	245.00
Open Enrolled Students Rec'd	17
Home School ADM	7.00
December 2015 Federal Child Count	35
% Special Needs Students*	13.0%
% Eligible for Free/Red. Lunch**	36.0%
District Dropout Rate	1.9%
District Attendance Rate	95.8%
Student to Staff Ratio	12.2
Number of Graduates	11

*Child Count data not displayed when student count <10.

**No Free/Red. Lunch Eligible data are displayed when > 90%.

Enrollment Data

	Average Daily Attendance	Average Daily Membersip
PK	27.943	28.864
KG-8	175.476	182.090
9-12	56.598	60.199
Total	260.017	271.153

Cost per ADM*

Educational Funds	\$9,749
-------------------	---------

* Includes selected expenditures from General, Capital Outlay, Special Education and Pension Funds

Teaching Staff Data

Average Teacher Salary	\$39,127
Avg Years of Experience	13.8
% with Advanced Degrees	30.4%
Certified Instructional Staff	22.0
Classroom Staff	0.0

State Aid

General Aid	\$485,142
Special Education	\$0
Sparsity	\$0
Extraordinary Cost Fund*	\$142,228
Total State Aid	\$627,370

* Represents approved amount paid to district.

Accountability Data*

Reading % Proficient/Advanced	50.39 %
Math % Proficient/Advanced	46.15 %
4-year Cohort Graduation Rate	75 %
High School Completion Rate	92.31 %

*No data displayed if the subgroup does not meet the minimum size for reporting purposes.

Ending Fund Balance

General	\$970,314
Capital Outlay	\$909,878
Special Education	(\$48,373)
Pension	\$123,554
Impact Aid	\$0

American College Test (ACT) *

English	
Math	
Reading	
Science	
Composite Score	
Number Tested	9

*No ACT data displayed when less than ten students are reported.

2015 Payable 2016 Taxable Valuations

Agricultural	\$188,915,064
Owner Occupied	\$48,441,666
Other Non-Ag/Utilities	\$51,914,624
Total	\$289,271,354

2015 Payable 2016 Levy per Thousand

Agricultural	\$1.568
Owner Occupied	\$4.075
Other Non-Ag/Utilities	\$8.727
Special Education	\$1.409
Capital Outlay	\$1.000
Bond Redemption	\$0.000
Pension Fund	\$0.300

Estelline School District 28-2

Revenue by Fund

Revenue by Fund					Other Fund Data		
	General	Capital Outlay	Special Education	Pension		Revenue	Expenditures
Local	\$1,122,890	\$306,470	\$435,467	\$78,574	Impact Aid	\$0	
County	\$12,238	\$0	\$0	\$0	Bond Redemption	\$114,782	\$0
State	\$519,605	\$0	\$142,228	\$0	Capital Projects	\$0	\$0
Federal	\$155,035	\$0	\$0	\$0	Food Service	\$118,033	\$147,388
Total	\$1,809,768	\$306,470	\$577,695	\$78,574	Other Enterprise	\$2,550	\$5,100

Expenditure by Fund

	General	Capital Outlay	Special Education	Pension
K-12 Instruction	\$1,107,564	\$119,070	\$318,963	\$44,435
PK Instruction	\$20,443	\$0	\$7,573	\$0
Adult Instruction	\$0	\$0	\$0	\$0
Student/Staff Services	\$93,975	\$12,581	\$108,186	\$3,634
Administration Services	\$216,140	\$0	\$864	\$8,464
Fiscal Services	\$80,768	\$3,855	\$0	\$2,666
Fac./Acquis./Const. Services	\$0	\$0	\$0	\$0
Operation/Maint. Services	\$236,208	\$39,044	\$0	\$3,009
Transportation Services	\$109,118	\$102,820	\$58,965	\$0
Other Support Services	\$0	\$10,305	\$85,004	\$0
Community Services	\$0	\$0	\$0	\$0
Non-Programmed	\$17,376	\$0	\$0	\$0
Debt Service	\$0	\$16,877	\$0	\$0
Co-Curricular	\$87,180	\$17,005	\$0	\$0
Total Expenditures	\$1,968,772	\$321,557	\$579,555	\$62,208

Expenditure by Object Categories*

	Salary	Benefit	Purchased Service	Supply	Property	Other
K-12 Instruction	\$949,752	\$300,470	\$134,854	\$204,955	\$0	\$0
PK Instruction	\$17,446	\$2,997	\$7,573	\$0	\$0	\$0
Adult Instruction	\$0	\$0	\$0	\$0	\$0	\$0
Student/Staff Services	\$62,182	\$15,477	\$120,053	\$3,364	\$12,581	\$4,720
Administration Services	\$150,609	\$50,539	\$21,738	\$1,456	\$0	\$1,125
Fiscal Services	\$44,721	\$15,600	\$19,280	\$7,689	\$0	\$0
Fac./Acquis./Const. Services	\$0	\$0	\$0	\$0	\$0	\$0
Operation/Maint. Services	\$52,194	\$24,582	\$115,466	\$69,013	\$0	\$17,007
Transportation Services	\$75,598	\$20,934	\$33,101	\$30,508	\$102,820	\$7,943
Other Support Services	\$39,573	\$18,793	\$85,911	\$95,599	\$0	\$2,820
Community Services	\$1,960	\$268	\$0	\$2,872	\$0	\$0
Non-Programmed	\$11,300	\$6,076	\$0	\$0	\$0	\$0
Debt Service	\$0	\$0	\$0	\$0	\$0	\$16,877
Co-Curricular	\$56,418	\$5,730	\$21,050	\$20,986	\$0	\$0
Total Expenditures	\$1,461,753	\$461,466	\$559,026	\$436,442	\$115,401	\$50,492

*Expenditure category data in the above table includes the sum of ALL K-12 funds operated by the district.



Gregg Jongeling
1815 Third Street
Brookings, SD 57006
gjongeling@gmail.com
605-691-4015

Dr. Klint Willert, Superintendent
Brookings School District 05-1
2130 8th St S
Brookings, SD 57006-3507

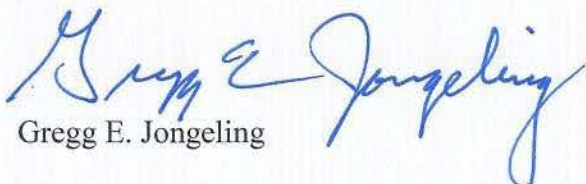
Dear Dr. Willert:

Otter Tail Power Company is requesting approval from the South Dakota Public Utilities Commission to construct a simple cycle combustion gas turbine electric power generating facility located two miles north and one mile west of Astoria, SD. As required by SDCL 49-41B-6 a Local Review Committee was formed May 9, 2017. One of the items to be considered by the Committee is "Educational facilities and manpower." I have been retained by the Committee to complete the required report which shall include the recommendations of the Committee as to mitigation measures associated with the construction and operation of the Astoria Station.

Construction is slated to begin in the spring of 2020 with a thirteen-month construction cycle. An average of 48 workers with a peak of 70 is anticipated. Once operational the Astoria Station will employ three to five permanent staff. Most of the construction workforce will not move their families into the area during construction. The three to five full time Otter Tail employees will locate in the area and will most likely have children who will attend the Deubrook, Deuel, Estelline or Brookings school districts.

Enclosed is a questionnaire for your use in providing input to the Committee regarding the possible impact on the Brookings School District. Please make your comments and return the questionnaire in the stamped envelope provided. It is my intent to gather the required information as efficiently as possible and to not take any more of your time than is necessary. Thank you so much for your assistance in this matter.

Sincerely,


Gregg E. Jongeling

BROOKINGS SCHOOL DISTRICT 05-1 QUESTIONNAIRE

Does the Brookings School District have capacity to add students that may be generated from the Otter Tail Power Company's construction of the Astoria Station?

- Elementary level Yes No
- Intermediate level Yes No
- Middle School level Yes No
- High School level Yes No

COMMENTS _____

Do you anticipate that the construction of the Otter Tail Power Company's Astoria Station will have a positive or negative impact on the educational facilities in the area surrounding the site?

Please Comment _____

Please provide any other comments you may have regarding the construction of the Otter Tail Power Company's Astoria Station.

Form completed by: Brian Lueders Date: 11/28/17

2015-2016 Profile of Brookings School District 05-1

2130 8th St S, Brookings, SD 57006-3507

Home County: Brookings

Area in Square Miles: 194

Student Data

Fall 2015 PK-12 Enrollment	3,351
Fall 2015 K-12 Fall Enrollment	3,351
Fall 2015 State Aid Fall Enrollment	3,354.41
Open Enrolled Students Rec'd	165
Home School ADM	79.85
December 2015 Federal Child Count	486
% Special Needs Students*	14.5%
% Eligible for Free/Red. Lunch**	24.9%
District Dropout Rate	2.0%
District Attendance Rate	95.4%
Student to Staff Ratio	14.9
Number of Graduates	209

*Child Count data not displayed when student count <10.

**No Free/Red. Lunch Eligible data are displayed when > 90%.

Enrollment Data

	Average Daily Attendance	Average Daily Membersip
PK	0.000	0.000
KG-8	2,346.514	2,440.974
9-12	820.919	880.792
Total	3,167.433	3,321.766

Cost per ADM*

Educational Funds	\$7,470
-------------------	---------

* Includes selected expenditures from General, Capital Outlay, Special Education and Pension Funds

Teaching Staff Data

Average Teacher Salary	\$41,488
Avg Years of Experience	13.2
% with Advanced Degrees	31.1%
Certified Instructional Staff	222.7
Classroom Staff	2.0

Accountability Data*

Reading % Proficient/Advanced	60.7 %
Math % Proficient/Advanced	51.48 %
4-year Cohort Graduation Rate	86.64 %
High School Completion Rate	91.1 %

*No data displayed if the subgroup does not meet the minimum size for reporting purposes.

American College Test (ACT) *

English	24.1
Math	23.4
Reading	24.8
Science	23.9
Composite Score	24.2
Number Tested	179

*No ACT data displayed when less than ten students are reported.

State Aid

General Aid	\$8,044,287
Special Education	\$1,031,162
Sparsity	\$0
Extraordinary Cost Fund*	\$514,776
Total State Aid	\$9,590,225

* Represents approved amount paid to district.

Ending Fund Balance

General	\$4,223,122
Capital Outlay	\$1,633,549
Special Education	\$58,071
Pension	\$653,456
Impact Aid	\$0

2015 Payable 2016 Taxable Valuations

Agricultural	\$201,133,293
Owner Occupied	\$764,623,003
Other Non-Ag/Utilities	\$554,669,001
Total	\$1,520,425,297

2015 Payable 2016 Levy per Thousand

Agricultural	\$1.711
Owner Occupied	\$4.447
Other Non-Ag/Utilities	\$9.523
Special Education	\$1.409
Capital Outlay	\$3.000
Bond Redemption	\$1.049
Pension Fund	\$0.300

*District has opted out of General Fund levy

Brookings School District 05-1

Revenue by Fund

	General	Capital Outlay	Special Education	Pension	Other Fund Data		
						Revenue	Expenditures
Local	\$10,388,852	\$4,517,851	\$2,261,590	\$453,797	Impact Aid	\$0	
County	\$366,580	\$0	\$0	\$0	Bond Redemption	\$1,620,022	\$1,858,964
State	\$8,510,412	\$94,911	\$1,545,938	\$0	Capital Projects	\$4,328	\$3,367,479
Federal	\$541,093	\$134,488	\$665,079	\$0	Food Service	\$1,777,877	\$1,739,645
Total	\$19,806,937	\$4,747,250	\$4,472,607	\$453,797	Other Enterprise	\$109,523	\$78,936

Expenditure by Fund

	General	Capital Outlay	Special Education	Pension
K-12 Instruction	\$12,414,435	\$2,246,548	\$2,993,624	\$200,000
PK Instruction	\$0	\$0	\$262,200	\$0
Adult Instruction	\$0	\$0	\$0	\$0
Student/Staff Services	\$1,594,714	\$67,282	\$933,669	\$0
Administration Services	\$1,697,727	\$0	\$158,823	\$0
Fiscal Services	\$316,376	\$7,220	\$0	\$0
Fac./Acquis./Const. Services	\$0	\$0	\$0	\$0
Operation/Maint. Services	\$2,647,432	\$881,305	\$0	\$0
Transportation Services	\$485,140	\$194,091	\$129,826	\$0
Other Support Services	\$55,685	\$37,075	\$24,570	\$0
Community Services	\$0	\$0	\$0	\$0
Non-Programmed	\$6,344	\$0	\$0	\$326,109
Debt Service	\$0	\$1,588,994	\$0	\$0
Co-Curricular	\$996,994	\$56,657	\$0	\$0
Total Expenditures	\$20,214,847	\$5,079,172	\$4,502,712	\$526,109

Expenditure by Object Categories*

	Salary	Benefit	Purchased Service	Supply	Property	Other
K-12 Instruction	\$10,968,649	\$3,806,221	\$354,091	\$1,723,706	\$990,691	\$11,249
PK Instruction	\$174,668	\$85,722	\$711	\$1,099	\$0	\$0
Adult Instruction	\$0	\$0	\$0	\$0	\$0	\$0
Student/Staff Services	\$1,666,978	\$518,841	\$211,246	\$112,597	\$67,282	\$18,722
Administration Services	\$1,276,456	\$344,911	\$138,056	\$43,635	\$0	\$53,492
Fiscal Services	\$208,538	\$66,305	\$10,344	\$34,811	\$0	\$3,597
Fac./Acquis./Const. Services	\$0	\$0	\$0	\$4,199	\$3,363,280	\$0
Operation/Maint. Services	\$861,080	\$341,405	\$1,463,594	\$703,986	\$64,046	\$94,627
Transportation Services	\$311,845	\$67,114	\$136,274	\$95,079	\$186,317	\$12,427
Other Support Services	\$492,851	\$275,323	\$136,298	\$931,108	\$0	\$21,395
Community Services	\$52,173	\$6,380	\$0	\$20,383	\$0	\$0
Non-Programmed	\$321,519	\$4,590	\$0	\$0	\$0	\$6,344
Debt Service	\$0	\$0	\$0	\$0	\$0	\$3,447,958
Co-Curricular	\$653,630	\$107,018	\$134,879	\$153,491	\$0	\$4,632
Total Expenditures	\$16,988,387	\$5,623,830	\$2,585,493	\$3,824,094	\$4,671,616	\$3,674,443

*Expenditure category data in the above table includes the sum of ALL K-12 funds operated by the district.