

Appendix C: Preliminary General Arrangement Plot Plan

(Source: Sargent and Lundy)

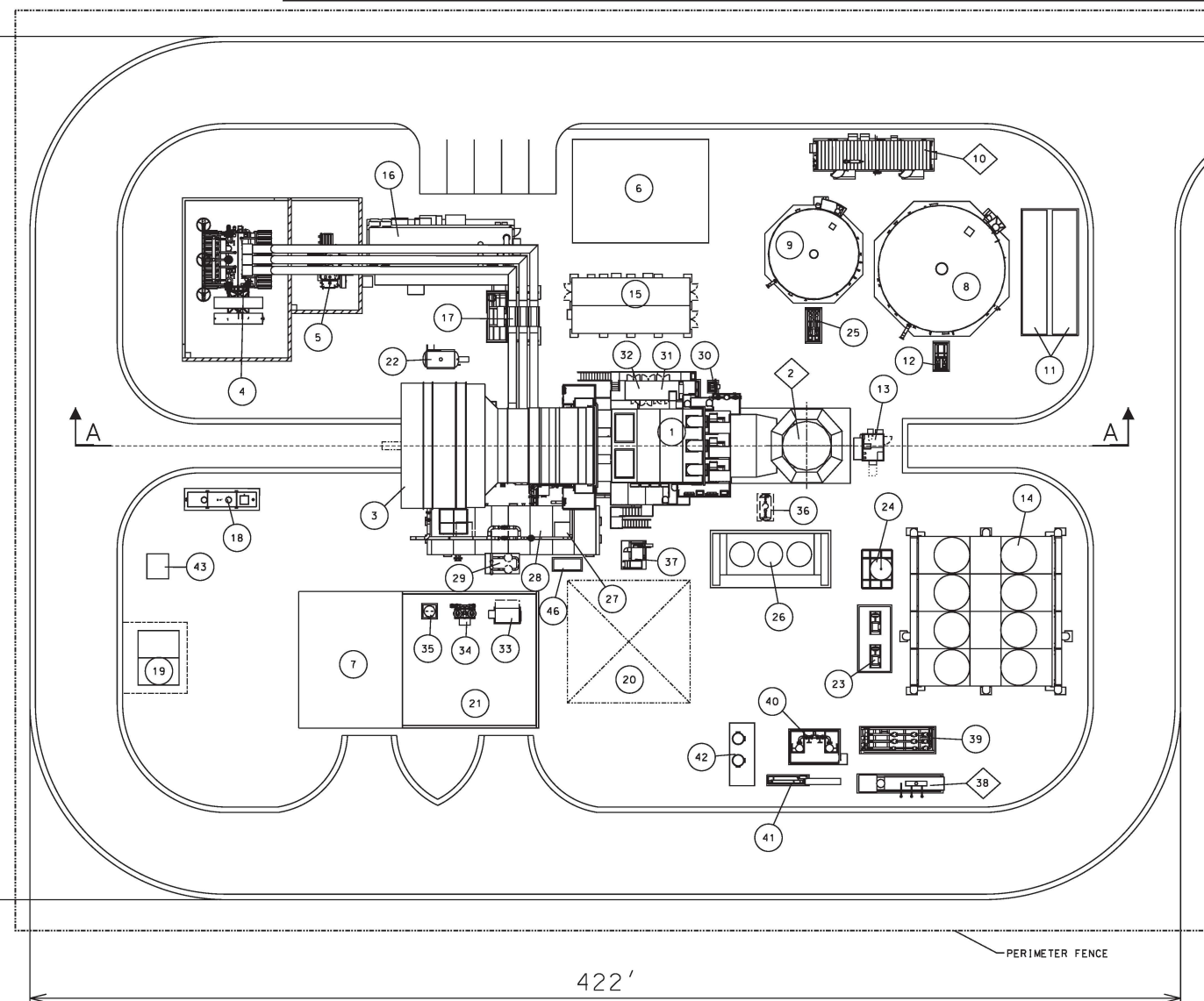
PRELIMINARY

NOT FOR CONSTRUCTION

317'

422'

PERIMETER FENCE



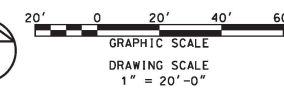
ITEM	DESCRIPTION
1	COMBUSTION TURBINE
2	EXHAUST STACK
3	INLET AIR FILTER
4	GENERATOR STEP-UP TRANSFORMER
5	AUXILIARY TRANSFORMER
6	CONTROL/ADMINISTRATION BUILDING
7	ELECTRICAL BUILDING
8	SERVICE/FIRE WATER STORAGE TANK (350,000 GAL)
9	DEMINEALIZED WATER STORAGE TANK (250,000 GAL)
10	FIRE WATER PUMPHOUSE
11	DEMINEALIZED WATER TRAILER SPACE
12	SERVICE WATER PUMPS
13	CEMS ENCLOSURE
14	CLOSED COOLING WATER HEAT EXCHANGER
15	CT CONTROL PACKAGE
16	CTG EXCITATION TRANSFORMER
17	GENERATOR CIRCUIT BREAKER
18	OILY WATER SEPARATOR (5,000 GAL)
19	NITROGEN & CO2 STORAGE AREA
20	MAINTENANCE CRANE SPACE
21	MAINTENANCE BUILDING
22	CT FIRE FIGHTING CO2 SKID
23	CLOSED COOLING WATER PUMPS
24	CLOSED COOLING WATER HEAD TANK
25	DEMINEALIZED WATER PUMPS
26	CT COOLING AIR COOLER
27	CT CONTROL OIL UNIT
28	CT LUBE OIL TANK UNIT
29	CT LUBE OIL MIST SEPARATOR
30	CT CASING COOLING AIR FAN
31	CT PURGE AIR UNIT
32	CT FUEL GAS UNIT
33	AIR COMPRESSOR
34	AIR DRYER
35	AIR RECEIVER
36	CT BLADE WASH DRAIN TANK (5,000 GAL)
37	CT COMPRESSOR BLADE WASHING UNIT
38	FUEL GAS WATER BATH HEATER
39	FUEL GAS PRESSURE REDUCING STATION
40	FUEL GAS KNOCK OUT DRUM
41	FUEL GAS FINAL COALESCING SKID
42	FUEL GAS LIQUID DRAINS TANKS
43	CLEAN WASTE WATER LIFT STATION (5,000 GAL)
44	- NOT USED -
45	RETENTION POND (600' x 200')
46	WET COMPRESSION PUMP SKID
47	SEPTIC TANK AND DISPOSAL FIELD (100' X 30')



xx - INDICATES EMITTER

UTM COORDINATE TABLE			
ITEM	DESCRIPTION	NORTH	EAST
2	EXHAUST STACK	4939314.83	693309.59
10	FIRE WATER PUMPHOUSE	4939345.75	693312.35
38	FUEL GAS WATER BATH HEATER	4939271.76	693321.10

NOTES:

1. THE COORDINATES PROVIDED ARE UTM ZONE 14T, IN METERS.
2. THE COORDINATES WERE LOCATED BY OVERLAYING THE EQUIPMENT ON A GOOGLE EARTH PRO MAP, AND WERE CHECKED USING BOTH USGS ASTORIA QUADRANGLE (2015) AND USACE CORPSON V6.0.1.
3. UTM COORDINATES SHALL NOT BE USED FOR ANY PURPOSE OTHER THAN PERMITTING.



HOLD INFORMATION	
NO.	DESCRIPTION
CONTRACTOR/INSTALLER SHALL TAKE ALL APPROPRIATE PRECAUTIONS TO ENSURE THE SAFETY OF ALL PEOPLE LOCATED ON THE WORK SITE INCLUDING CONTRACTOR'S/INSTALLER'S PERSONNEL (OR THAT OF ITS SUB-CONTRACTOR(S)) PERFORMING THE WORK.	
RELEASE INFORMATION	
REV.	DATE DESCRIPTION
B	03-03-2017 FOR CLIENT COMMENT
C	05-19-2017 FOR USE
ISSUE PURPOSE:	
SPECIFICATION:	
PROJECT NO.: 12715-009	
I HEREBY CERTIFY THAT THIS ENGINEERING DOCUMENT WAS PREPARED BY ME OR UNDER MY DIRECT PERSONAL SUPERVISION AND THAT I AM A DULY LICENSED PROFESSIONAL ENGINEER UNDER THE LAWS OF THE STATE OF ENTER NAME.	
ENTER NAME	
ENTER DATE	
MY LICENSE RENEWAL DATE	
IS: ENTER DATE	
PAGES OR SHEETS COVERED BY THIS SEAL:	
THIS DOCUMENT ONLY.	
CERTIFICATE OF AUTHORIZATION (WHEN REQ'D)	
CAD FILE NAME: SK-GA-AST-002.DGN	
PREPARED BY: R. MILLER	
REVIEWED BY: A. PATEL	
APPROVED BY: ----	
ANY MODIFICATION OR ADDITION TO THIS DRAWING BY AN ORGANIZATION OTHER THAN SARGENT & LUNDY, IS NOT THE RESPONSIBILITY OF SARGENT & LUNDY.	
 SARGENT & LUNDY ^{INC} 55 EAST MONROE STREET CHICAGO, ILLINOIS 60603-5780	
 OTTER TAIL POWER COMPANY	
PROJECT	
ASTORIA SIMPLE CYCLE	
SOUTH DAKOTA	
DRAWING TITLE	
PRELIMINARY GENERAL ARRANGEMENT PLOT PLAN	
DRAWING NUMBER	REVISION
SK-GA-AST-002	C
SHEET 01 OF 01	

ZL8416/0mi743/0:astoria-sk-ga-ast-002.dgn
 Form 006-0401-01-08, ANSI (Imperial) MicroStation Border - Size E - 34 x 44
 Revision 11A, Revision Date: 04-30-2010

5/23/2017 1:11:06 PM
 DT:astoria-sk-ga-ast-002.dgn