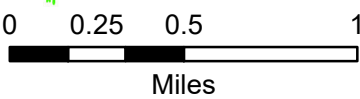
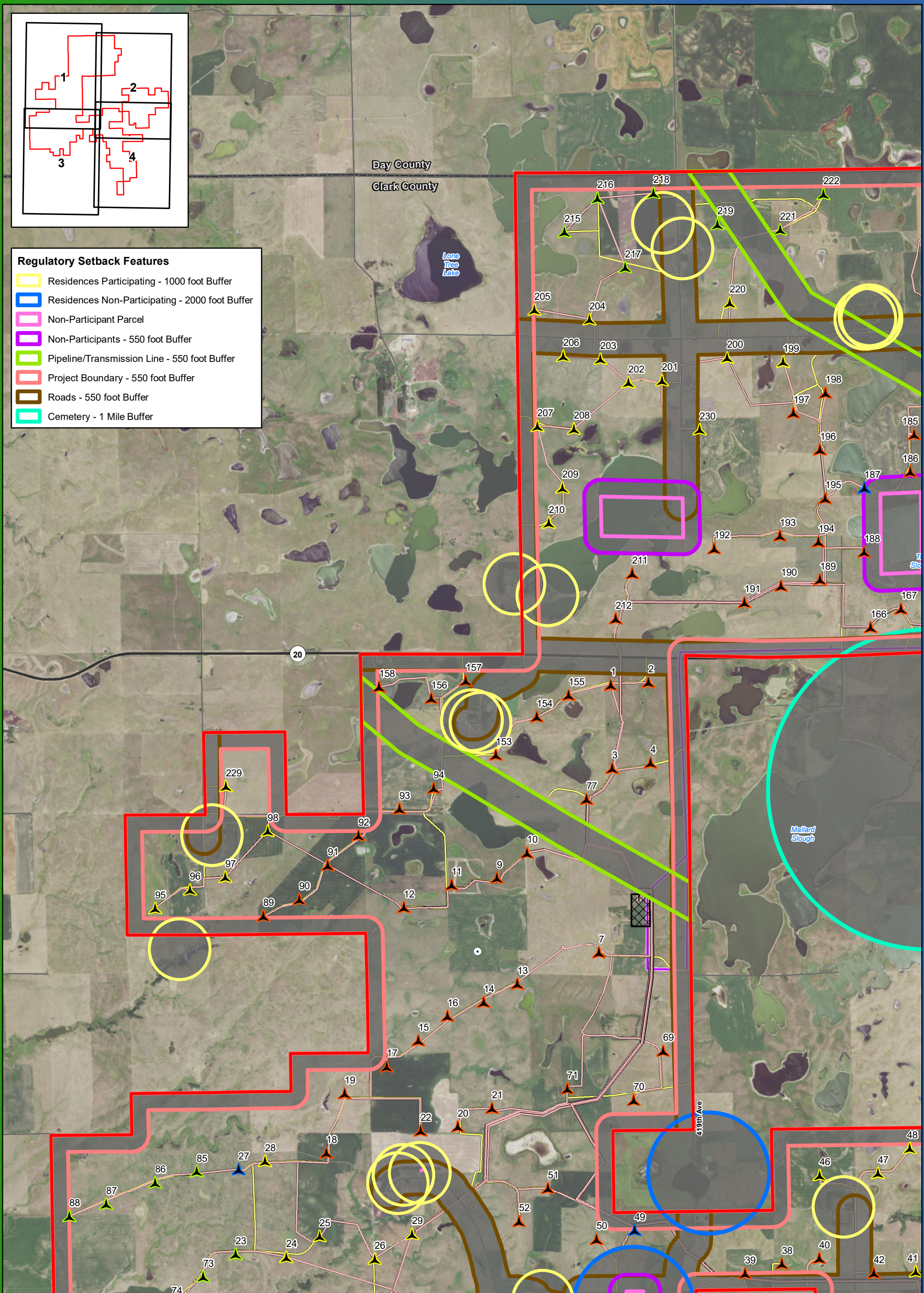


- Regulatory Setback Features**
- Residences Participating - 1000 foot Buffer
 - Residences Non-Participating - 2000 foot Buffer
 - Non-Participant Parcel
 - Non-Participants - 550 foot Buffer
 - Pipeline/Transmission Line - 550 foot Buffer
 - Project Boundary - 550 foot Buffer
 - Roads - 550 foot Buffer
 - Cemetery - 1 Mile Buffer

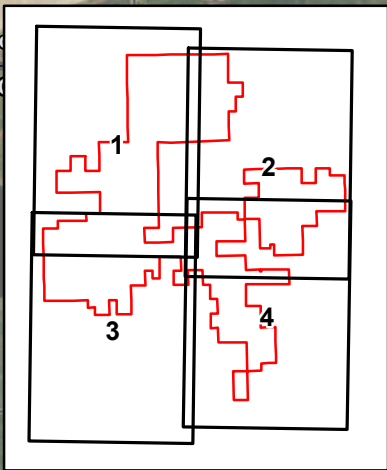
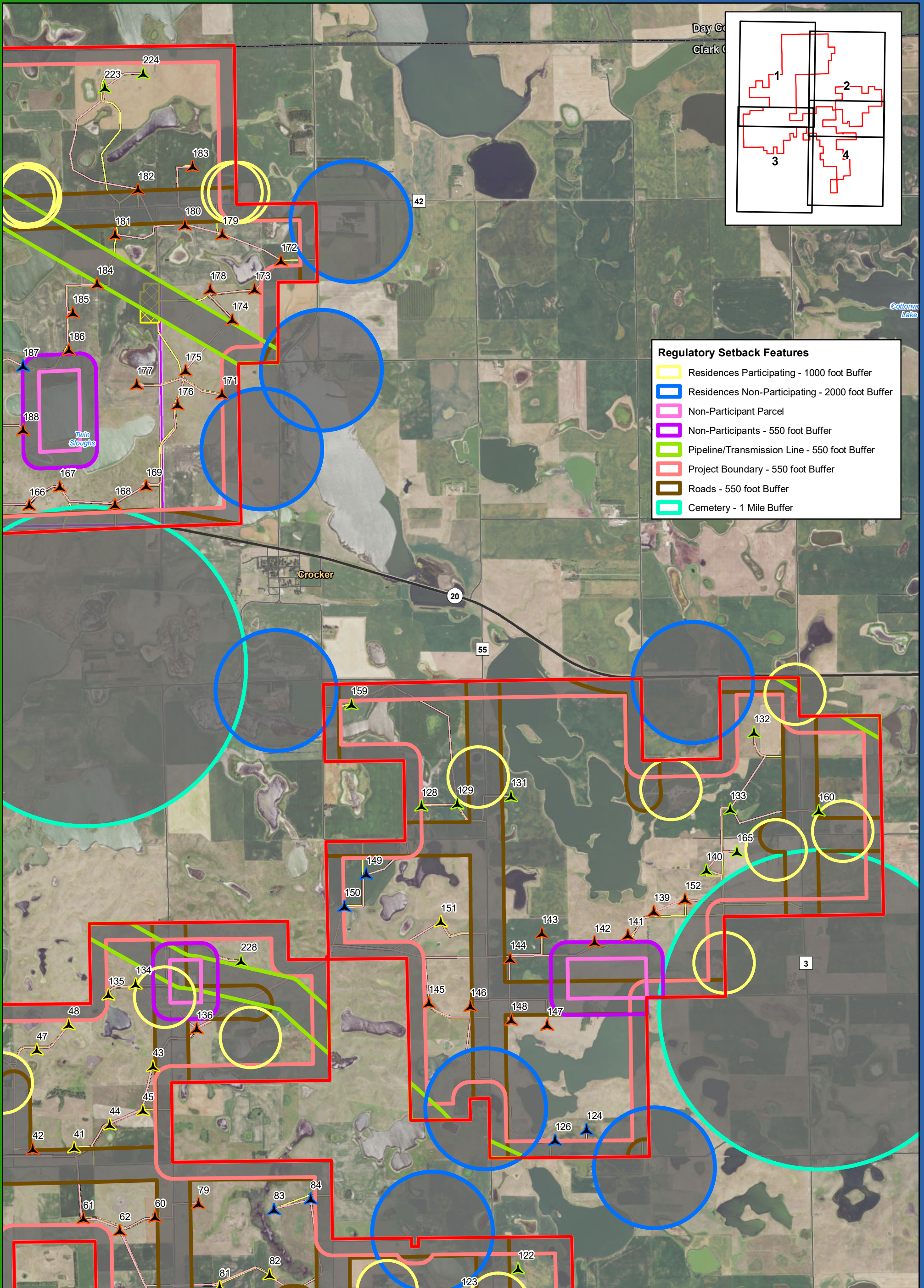


**Preliminary Project Layout Map Series
for Data Request 7-3
Page 1**

**Crocker Wind Farm
Clark County, SD
45.079602, -97.845696**

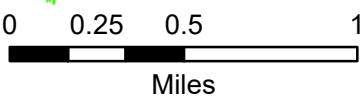
- ▲ Turbine Present in 4 Layouts
- ▲ Turbine Present in 3 Layouts
- ▲ Turbine Present in 2 Layouts
- ▲ Turbine Present in 1 Layout
- Project Area Boundary
- Project Substation
- Interconnect Substation
- Interconnection 345 kV Transmission Line
- Preliminary Collection Line
- Preliminary Access Road
- Temporary Met Tower

Note: Turbines are not to scale.



Regulatory Setback Features

- Residences Participating - 1000 foot Buffer
- Residences Non-Participating - 2000 foot Buffer
- Non-Participant Parcel
- Non-Participants - 550 foot Buffer
- Pipeline/Transmission Line - 550 foot Buffer
- Project Boundary - 550 foot Buffer
- Roads - 550 foot Buffer
- Cemetery - 1 Mile Buffer

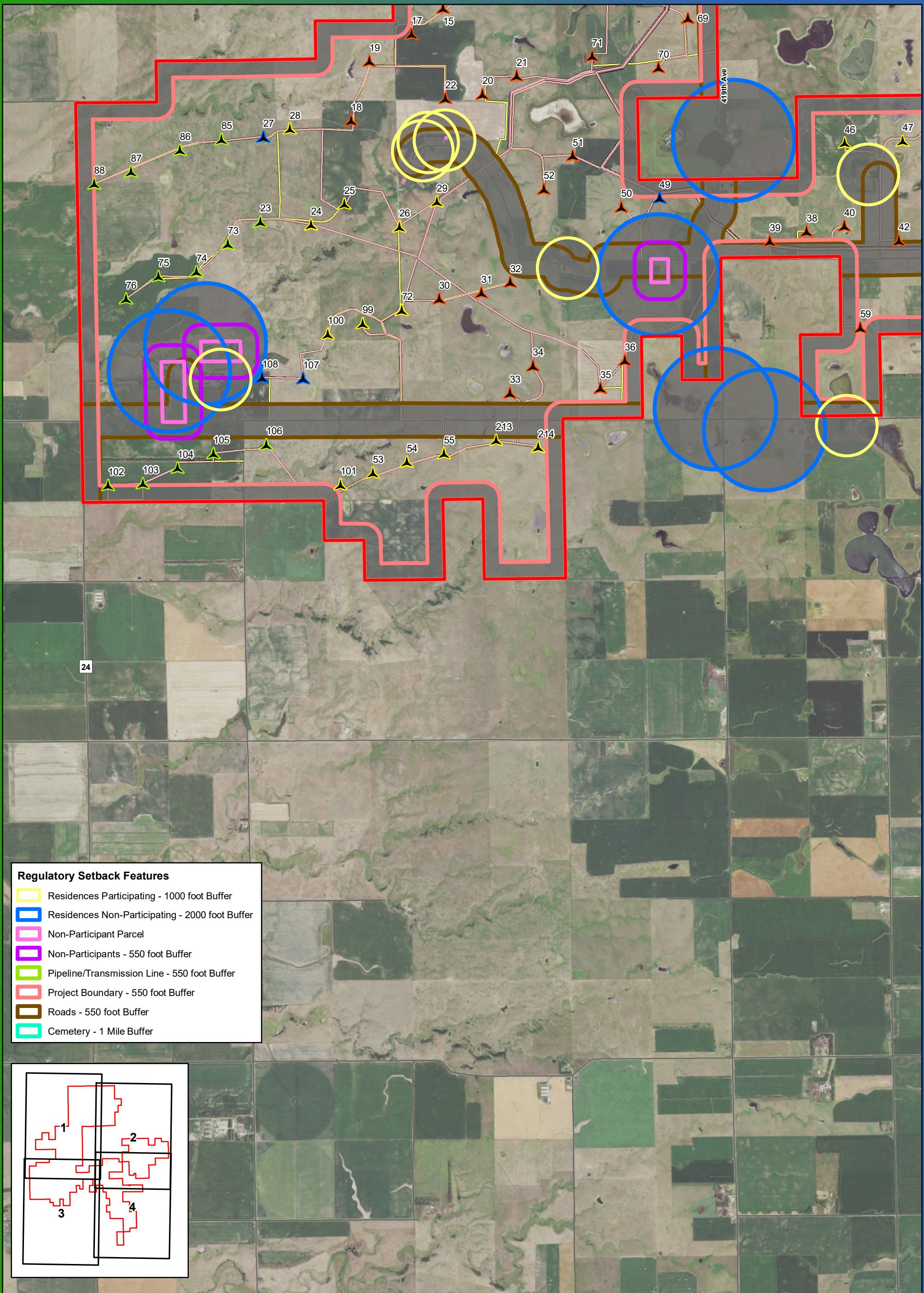


**Preliminary Project Layout Map Series
for Data Request 7-3
Page 2**

**Crocker Wind Farm
Clark County, SD
45.079602, -97.845696**

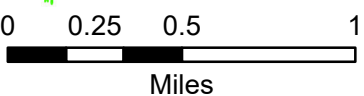
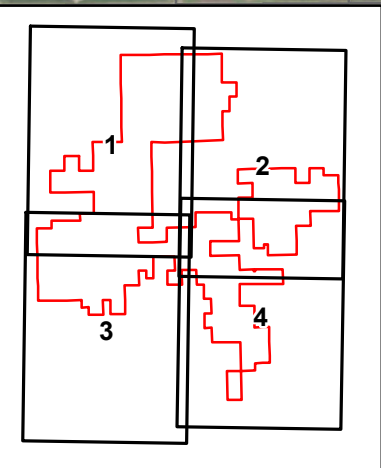
- ▲ Turbine Present in 4 Layouts
- ▲ Turbine Present in 3 Layouts
- ▲ Turbine Present in 2 Layouts
- ▲ Turbine Present in 1 Layout
- Project Area Boundary
- Project Substation
- Interconnect Substation
- Interconnection 345 kV Transmission Line
- Preliminary Collection Line
- Preliminary Access Road
- Temporary Met Tower

Note: Turbines are not to scale.



Regulatory Setback Features

- ▭ Residences Participating - 1000 foot Buffer
- ▭ Residences Non-Participating - 2000 foot Buffer
- ▭ Non-Participant Parcel
- ▭ Non-Participants - 550 foot Buffer
- ▭ Pipeline/Transmission Line - 550 foot Buffer
- ▭ Project Boundary - 550 foot Buffer
- ▭ Roads - 550 foot Buffer
- ▭ Cemetery - 1 Mile Buffer

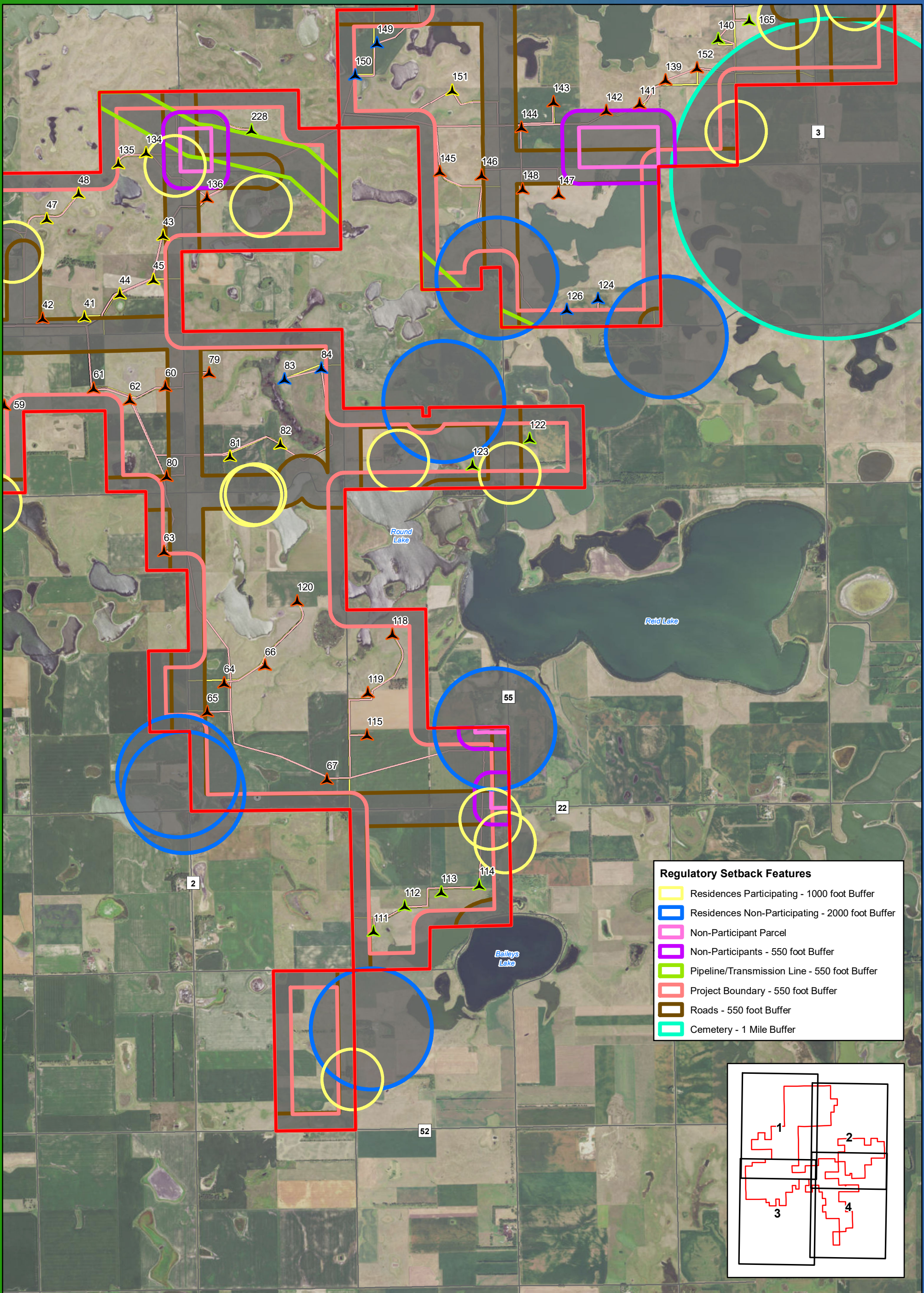


**Preliminary Project Layout Map Series
for Data Request 7-3
Page 3**

**Crocker Wind Farm
Clark County, SD
45.079602, -97.845696**

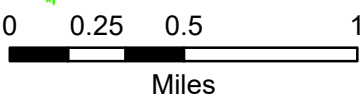
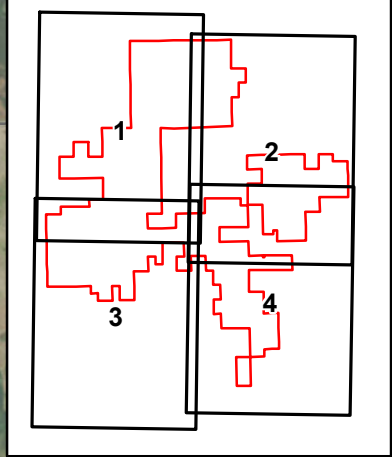
- ▲ Turbine Present in 4 Layouts
- ▲ Turbine Present in 3 Layouts
- ▲ Turbine Present in 2 Layouts
- ▲ Turbine Present in 1 Layout
- ▭ Project Area Boundary
- Project Substation
- Interconnect Substation
- Interconnection 345 kV Transmission Line
- Preliminary Collection Line
- Preliminary Access Road
- Temporary Met Tower

Note: Turbines are not to scale.



Regulatory Setback Features

- Residences Participating - 1000 foot Buffer
- Residences Non-Participating - 2000 foot Buffer
- Non-Participant Parcel
- Non-Participants - 550 foot Buffer
- Pipeline/Transmission Line - 550 foot Buffer
- Project Boundary - 550 foot Buffer
- Roads - 550 foot Buffer
- Cemetery - 1 Mile Buffer



**Preliminary Project Layout Map Series
for Data Request 7-3
Page 4**

**Crocker Wind Farm
Clark County, SD
45.079602, -97.845696**

- ▲ Turbine Present in 4 Layouts
- ▲ Turbine Present in 3 Layouts
- ▲ Turbine Present in 2 Layouts
- ▲ Turbine Present in 1 Layout
- Project Area Boundary
- Project Substation
- Interconnect Substation
- Interconnection 345 kV Transmission Line
- Preliminary Collection Line
- Preliminary Access Road
- Temporary Met Tower

Note: Turbines are not to scale.