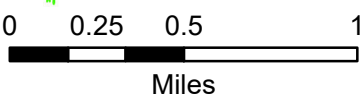
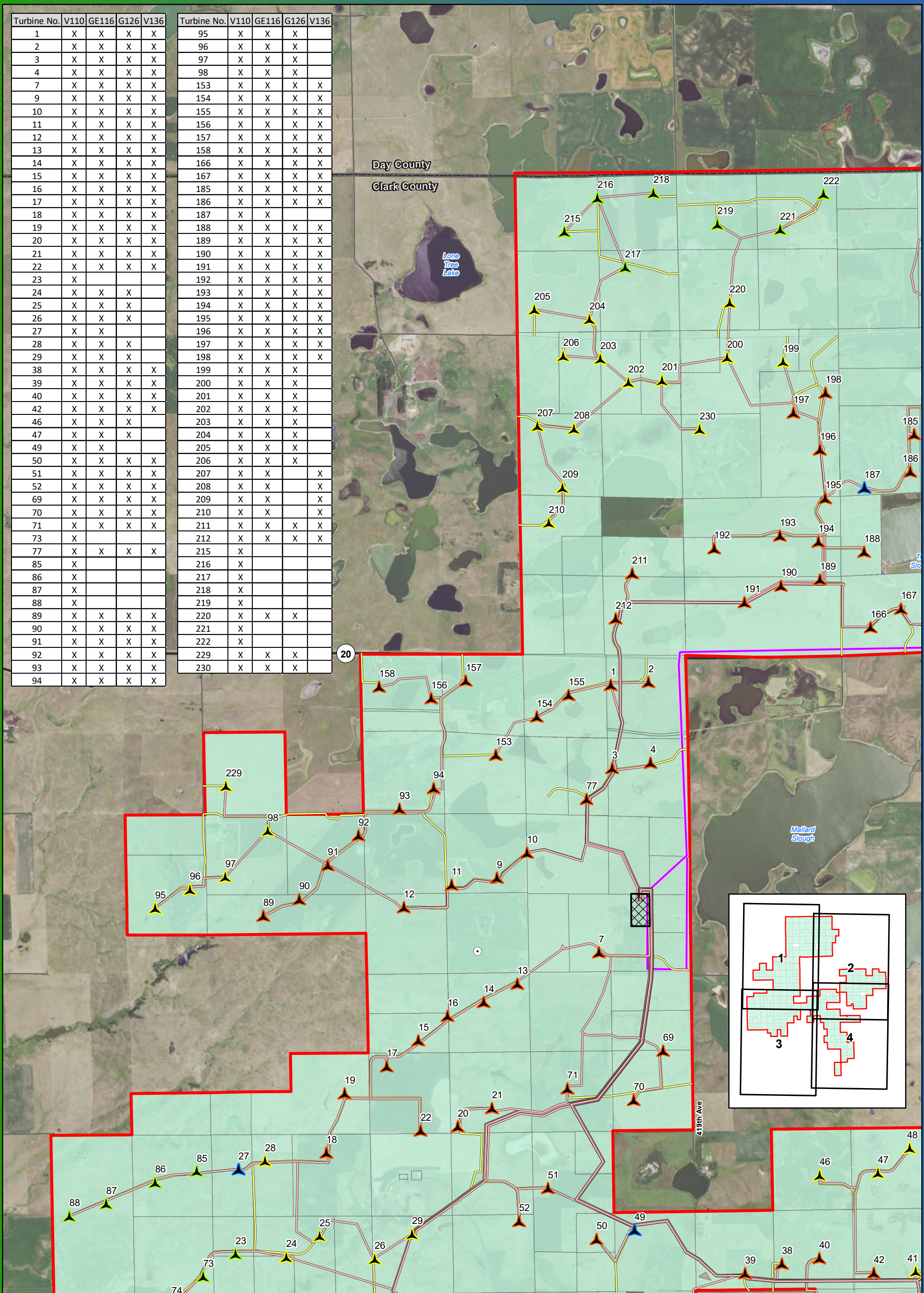


Turbine No.	V110	GE116	G126	V136	Turbine No.	V110	GE116	G126	V136
1	X	X	X	X	95	X	X	X	X
2	X	X	X	X	96	X	X	X	X
3	X	X	X	X	97	X	X	X	X
4	X	X	X	X	98	X	X	X	X
7	X	X	X	X	153	X	X	X	X
9	X	X	X	X	154	X	X	X	X
10	X	X	X	X	155	X	X	X	X
11	X	X	X	X	156	X	X	X	X
12	X	X	X	X	157	X	X	X	X
13	X	X	X	X	158	X	X	X	X
14	X	X	X	X	166	X	X	X	X
15	X	X	X	X	167	X	X	X	X
16	X	X	X	X	185	X	X	X	X
17	X	X	X	X	186	X	X	X	X
18	X	X	X	X	187	X	X		
19	X	X	X	X	188	X	X	X	X
20	X	X	X	X	189	X	X	X	X
21	X	X	X	X	190	X	X	X	X
22	X	X	X	X	191	X	X	X	X
23	X				192	X	X	X	X
24	X	X	X		193	X	X	X	X
25	X	X	X		194	X	X	X	X
26	X	X	X	X	195	X	X	X	X
27	X	X			196	X	X	X	X
28	X	X	X		197	X	X	X	X
29	X	X	X		198	X	X	X	X
38	X	X	X	X	199	X	X	X	
39	X	X	X	X	200	X	X	X	
40	X	X	X	X	201	X	X	X	
42	X	X	X	X	202	X	X	X	
46	X	X	X		203	X	X	X	
47	X	X	X		204	X	X	X	
49	X	X			205	X	X	X	
50	X	X	X	X	206	X	X	X	
51	X	X	X	X	207	X	X		X
52	X	X	X	X	208	X	X		X
69	X	X	X	X	209	X	X		X
70	X	X	X	X	210	X	X		X
71	X	X	X	X	211	X	X	X	X
73	X				212	X	X	X	X
77	X	X	X	X	215	X			
85	X				216	X			
86	X				217	X			
87	X				218	X			
88	X				219	X			
89	X	X	X	X	220	X	X	X	
90	X	X	X	X	221	X			
91	X	X	X	X	222	X			
92	X	X	X	X	229	X	X	X	
93	X	X	X	X	230	X	X	X	
94	X	X	X	X					



**Preliminary Project Layout Map Series
for Data Request 7-2
Page 1**

**Crocker Wind Farm
Clark County, SD
45.079602, -97.845696**

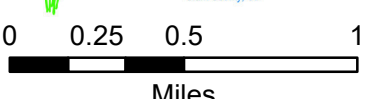
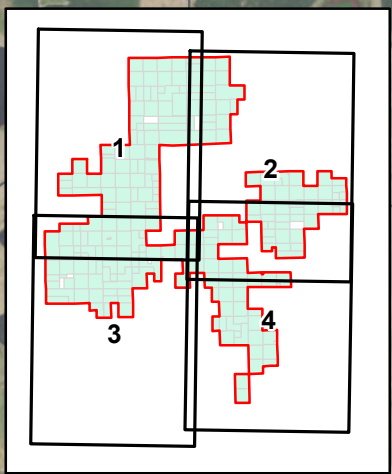
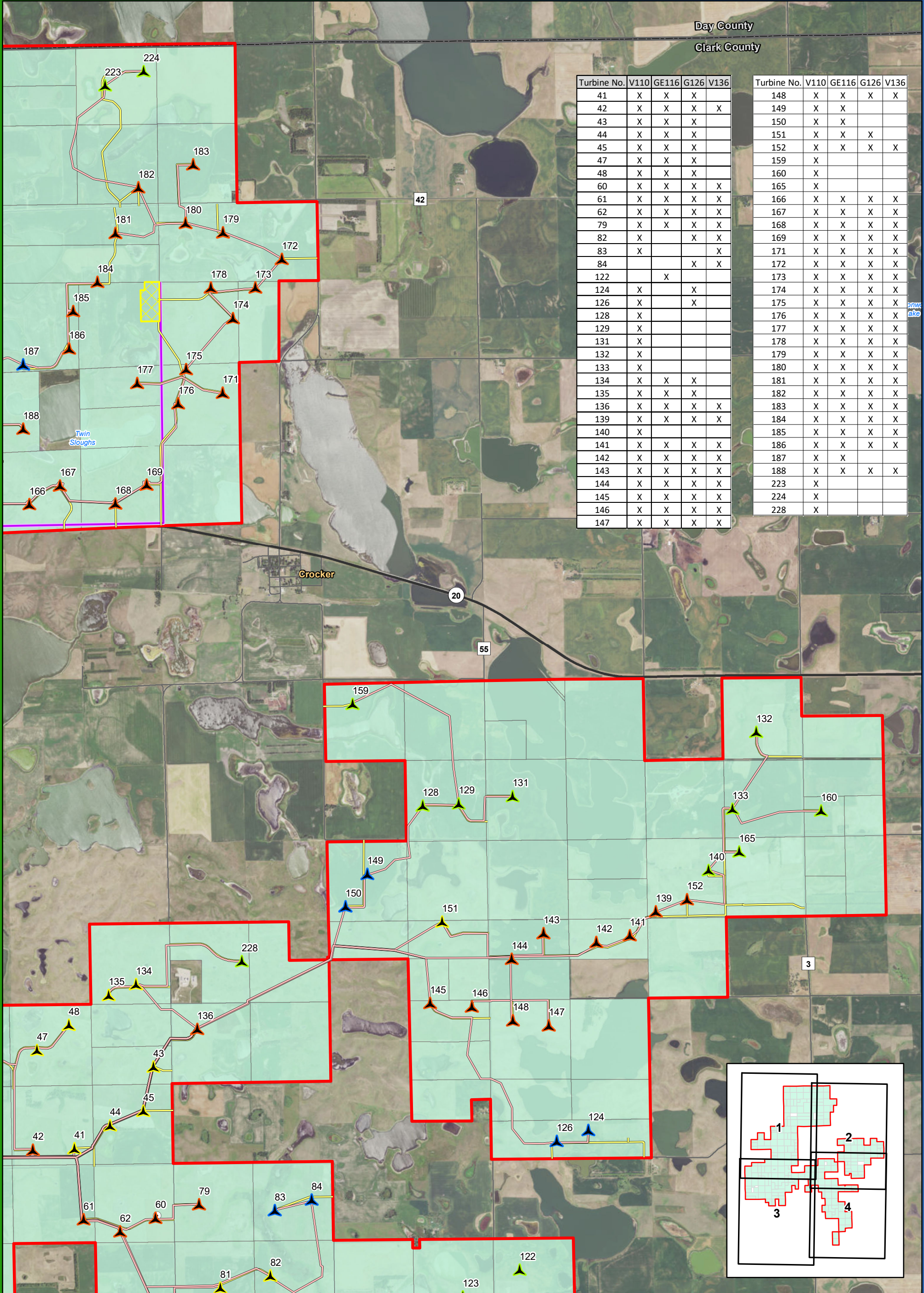
- Turbine Present in 4 Layouts
- Turbine Present in 3 Layouts
- Turbine Present in 2 Layouts
- Turbine Present in 1 Layout
- Project Area Boundary
- Project Substation
- Interconnect Substation
- Interconnection 345 kV Transmission Line
- Preliminary Collection Line
- Preliminary Access Road
- Temporary Met Tower
- Site Control Status**
- Participants

Day County

Clark County

Turbine No.	V110	GE116	G126	V136
41	X	X	X	
42	X	X	X	X
43	X	X	X	
44	X	X	X	
45	X	X	X	
47	X	X	X	
48	X	X	X	
60	X	X	X	X
61	X	X	X	X
62	X	X	X	X
79	X	X	X	X
82	X		X	X
83	X			X
84			X	X
122		X		
124	X		X	
126	X		X	
128	X			
129	X			
131	X			
132	X			
133	X			
134	X	X	X	
135	X	X	X	
136	X	X	X	X
139	X	X	X	X
140	X			
141	X	X	X	X
142	X	X	X	X
143	X	X	X	X
144	X	X	X	X
145	X	X	X	X
146	X	X	X	X
147	X	X	X	X

Turbine No.	V110	GE116	G126	V136
148	X	X	X	X
149	X	X		
150	X	X		
151	X	X	X	
152	X	X	X	X
159	X			
160	X			
165	X			
166	X	X	X	X
167	X	X	X	X
168	X	X	X	X
169	X	X	X	X
171	X	X	X	X
172	X	X	X	X
173	X	X	X	X
174	X	X	X	X
175	X	X	X	X
176	X	X	X	X
177	X	X	X	X
178	X	X	X	X
179	X	X	X	X
180	X	X	X	X
181	X	X	X	X
182	X	X	X	X
183	X	X	X	X
184	X	X	X	X
185	X	X	X	X
186	X	X	X	X
187	X	X	X	X
188	X	X	X	X
223	X			
224	X			
228	X			

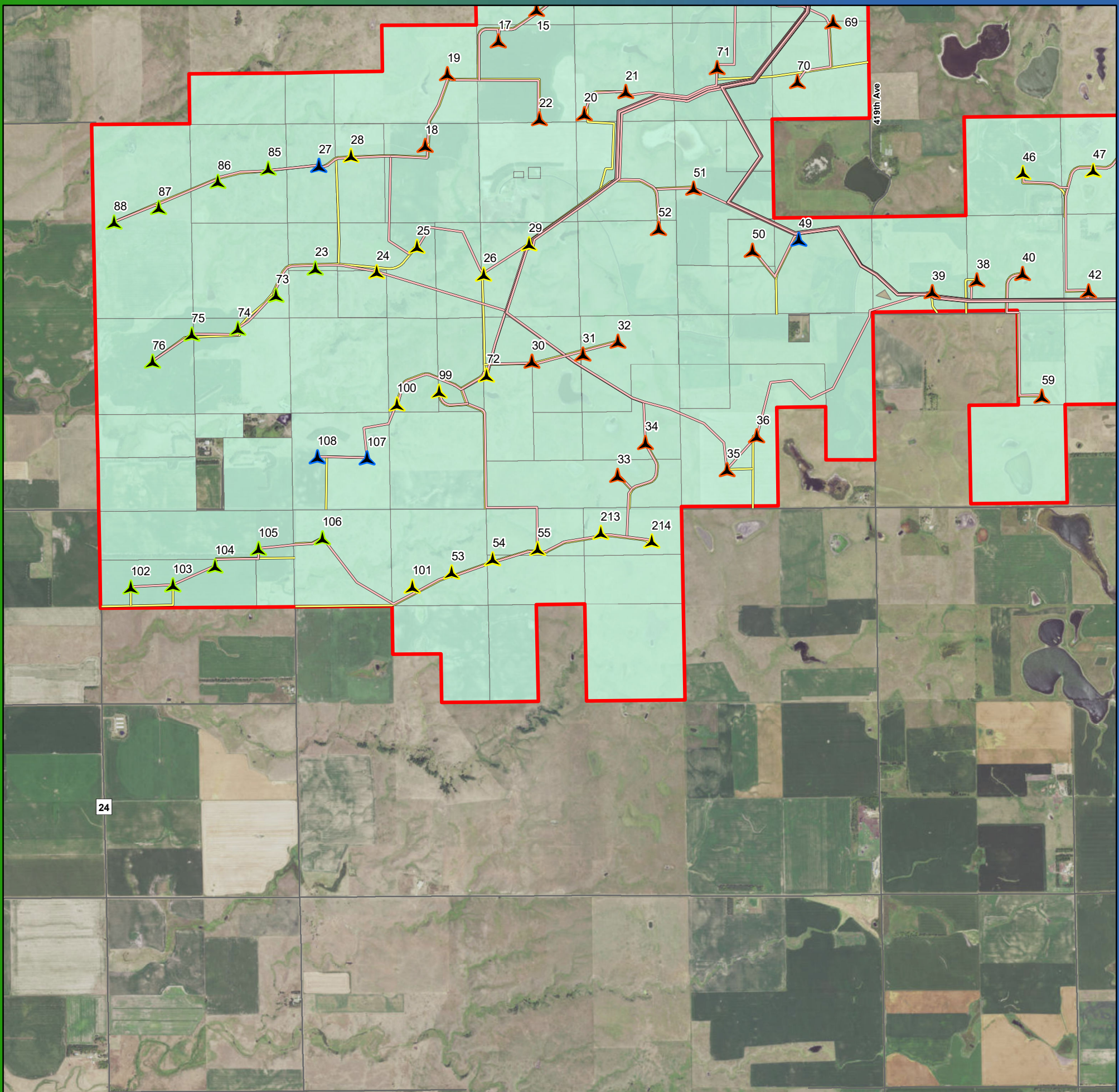


**Preliminary Project Layout Map Series
for Data Request 7-2
Page 2**

**Crocker Wind Farm
Clark County, SD
45.079602, -97.845696**

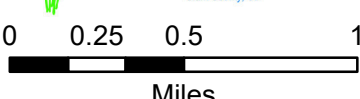
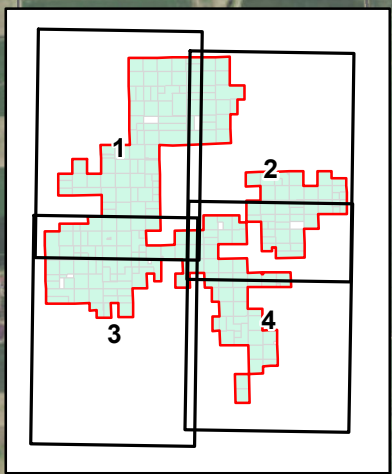
- Turbine Present in 4 Layouts
- Turbine Present in 3 Layouts
- Turbine Present in 2 Layouts
- Turbine Present in 1 Layout
- Project Area Boundary
- Project Substation
- Interconnect Substation
- Interconnection 345 kV Transmission Line
- Preliminary Collection Line
- Preliminary Access Road
- Temporary Met Tower
- Site Control Status**
- Participants

Imagery Source: 2015 Color FSA
Data Source: Geronimo Energy, US Census, SD DOT



Turbine No.	V110	GE116	G126	V136
17	X	X	X	X
18	X	X	X	X
19	X	X	X	X
20	X	X	X	X
21	X	X	X	X
22	X	X	X	X
23	X	X	X	X
24	X	X	X	
25	X	X	X	
26	X	X	X	
27	X	X	X	
28	X	X	X	
29	X	X	X	
30	X	X	X	X
31	X	X	X	X
32	X	X	X	X
33	X	X	X	X
34	X	X	X	X
35	X	X	X	X
36	X	X	X	X
38	X	X	X	X
39	X	X	X	X
40	X	X	X	X
42	X	X	X	X
46	X	X	X	
47	X	X	X	
49	X	X	X	
50	X	X	X	X
51	X	X	X	X

Turbine No.	V110	GE116	G126	V136
52	X	X	X	X
53	X	X	X	
54	X	X	X	
55	X	X	X	
59	X	X	X	X
70	X	X	X	X
71	X	X	X	X
72	X	X	X	
73	X			
74	X			
75	X			
76	X			
85	X			
86	X			
87	X			
88	X			
99	X	X	X	
100	X	X	X	
101	X	X	X	
102	X			
103	X			
104	X			
105	X			
106	X			
107	X	X		
108	X	X		
213	X	X	X	
214	X	X	X	

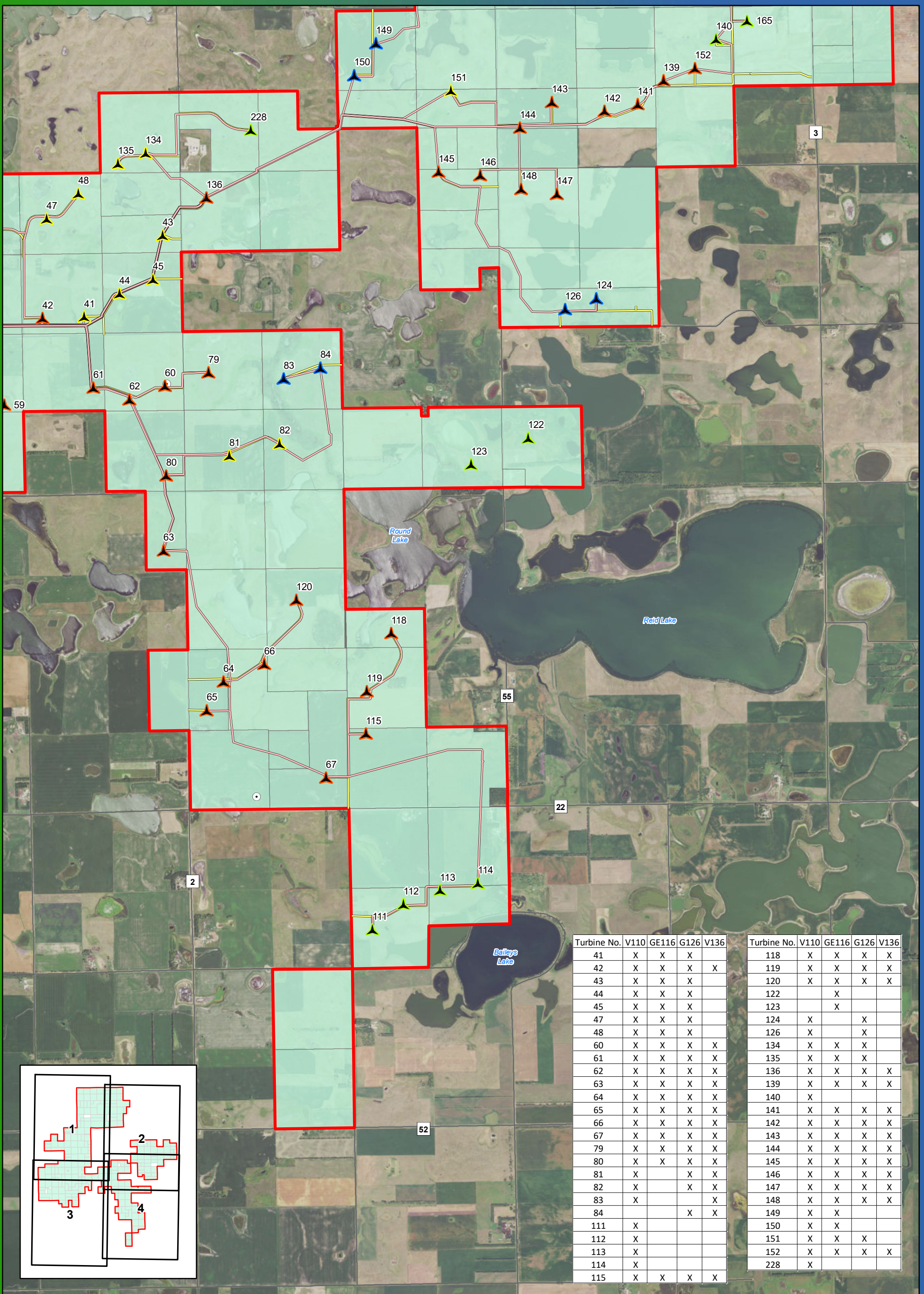


**Preliminary Project Layout Map Series
for Data Request 7-2
Page 3**

**Crocker Wind Farm
Clark County, SD
45.079602, -97.845696**

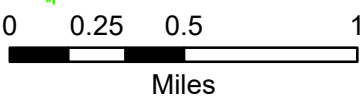
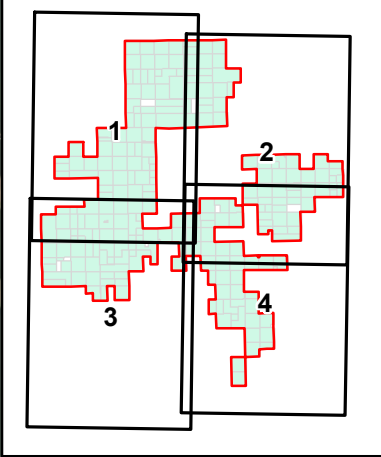
- Turbine Present in 4 Layouts
- Turbine Present in 3 Layouts
- Turbine Present in 2 Layouts
- Turbine Present in 1 Layout
- Project Area Boundary
- Project Substation
- Interconnect Substation
- Interconnection 345 kV Transmission Line
- Preliminary Collection Line
- Preliminary Access Road
- Temporary Met Tower
- Site Control Status**
- Participants

Imagery Source: 2015 Color FSA
Data Source: Geronimo Energy, US Census, SD DOT



Turbine No.	V110	GE116	G126	V136
41	X	X	X	
42	X	X	X	X
43	X	X	X	
44	X	X	X	
45	X	X	X	
47	X	X	X	
48	X	X	X	
60	X	X	X	X
61	X	X	X	X
62	X	X	X	X
63	X	X	X	X
64	X	X	X	X
65	X	X	X	X
66	X	X	X	X
67	X	X	X	X
79	X	X	X	X
80	X	X	X	X
81	X		X	X
82	X		X	X
83	X			X
84			X	X
111	X			
112	X			
113	X			
114	X			
115	X	X	X	X

Turbine No.	V110	GE116	G126	V136
118	X	X	X	X
119	X	X	X	X
120	X	X	X	X
122		X		
123		X		
124	X		X	
126	X		X	
134	X	X	X	
135	X	X	X	
136	X	X	X	X
139	X	X	X	X
140	X			
141	X	X	X	X
142	X	X	X	X
143	X	X	X	X
144	X	X	X	X
145	X	X	X	X
146	X	X	X	X
147	X	X	X	X
148	X	X	X	X
149	X	X		
150	X	X		
151	X	X	X	
152	X	X	X	X
228	X			



**Preliminary Project Layout Map Series
for Data Request 7-2
Page 4**

**Crocker Wind Farm
Clark County, SD
45.079602, -97.845696**

- Turbine Present in 4 Layouts
- Turbine Present in 3 Layouts
- Turbine Present in 2 Layouts
- Turbine Present in 1 Layout
- Project Area Boundary
- Project Substation
- Interconnect Substation
- Interconnection 345 kV Transmission Line
- Preliminary Collection Line
- Preliminary Access Road
- Temporary Met Tower
- Site Control Status**
- Participants

Imagery Source: 2015 Color FSA
Data Source: Geronimo Energy, US Census, SD DOT