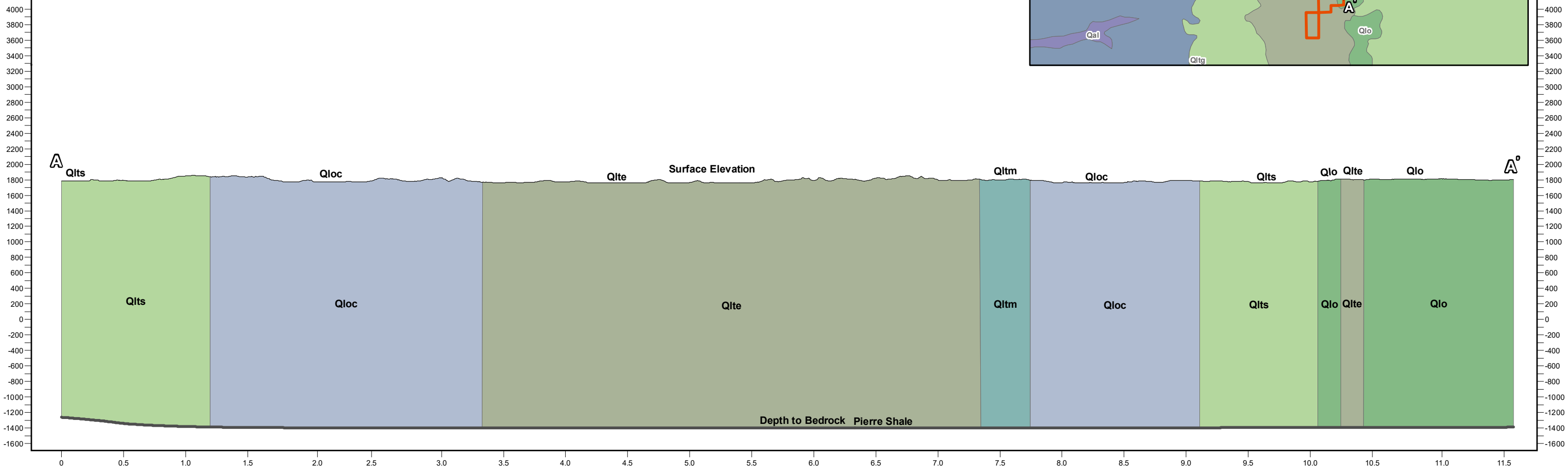
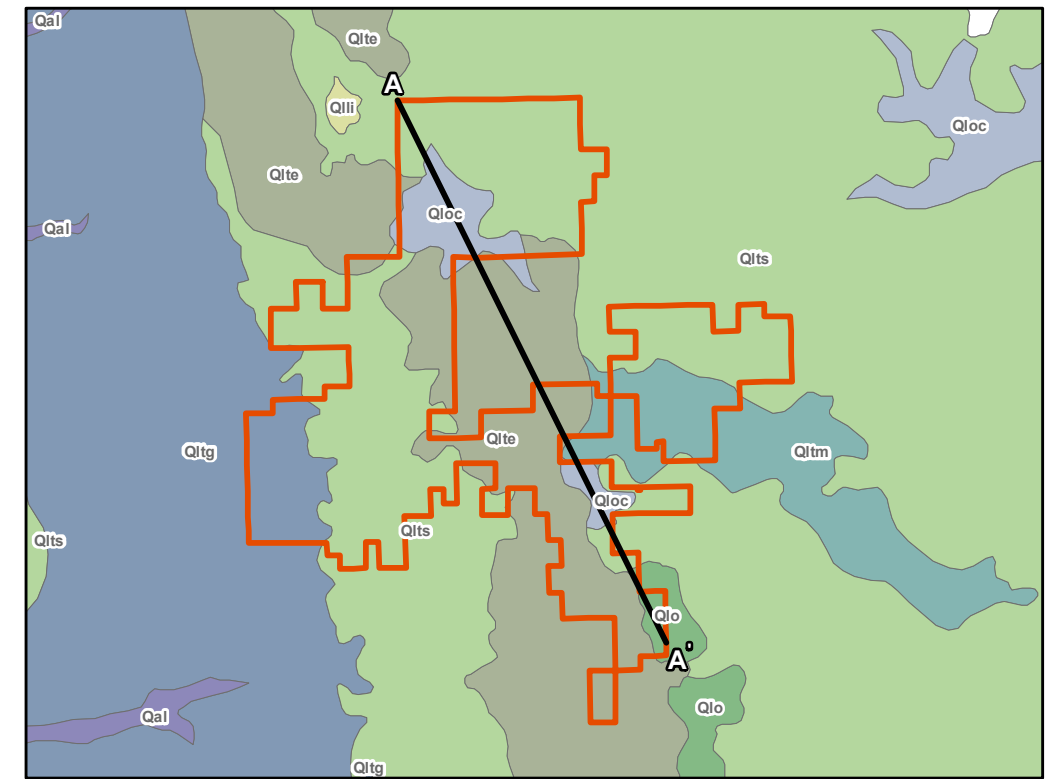


Surface Elevation Range is 1758ft - 1855ft
 Depth to Bedrock Range is 1262ft - 1400ft



Vertical Axes Units are in Feet and Horizontal Axes Units are in Miles



Geologic Cross Section A - A'

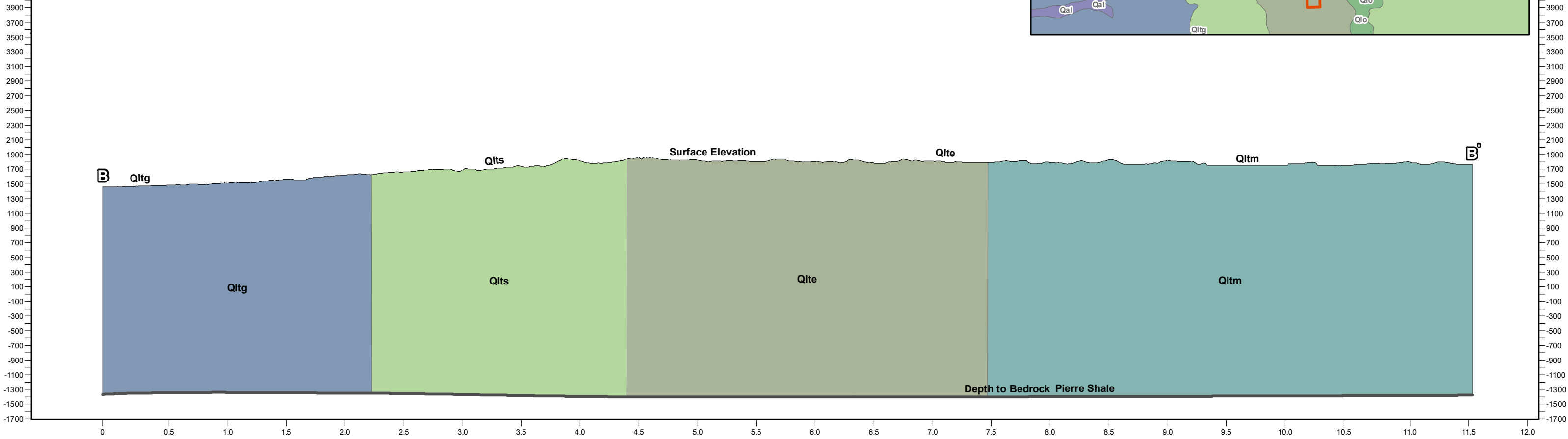
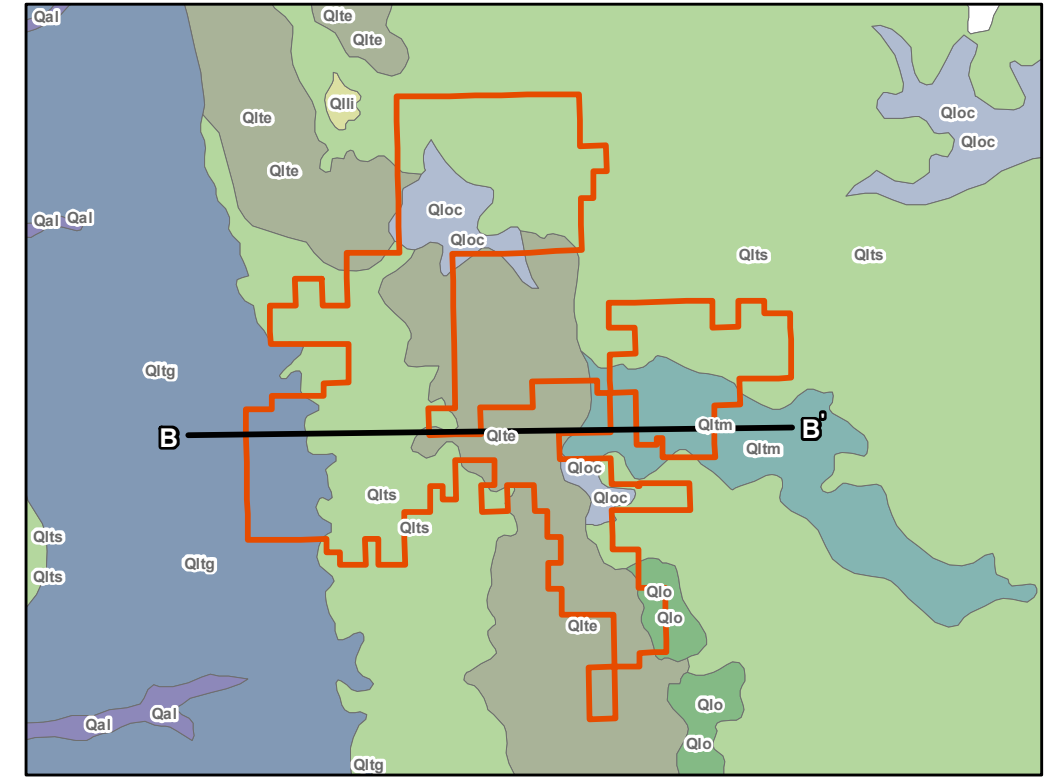
Crocker Wind Farm
Clark County, SD

45.079602, -97.845696

Geology

- Qlo - Outwash, undifferentiated
- Qloc - Outwash, collapsed
- Qlte - Till, end moraine
- Qltm - Till, minor moraine
- Qlts - Till, stagnation moraine

Surface Elevation Range is 1457ft - 1857ft
 Depth to Bedrock Range is 1341ft - 1400ft



Vertical Axes Units are in Feet and Horizontal Axes Units are in Miles



Geologic Cross Section B - B'

Crocker Wind Farm
Clark County, SD

45.079602, -97.845696

Geology

- Qlte - Till, end moraine
- Qltg - Till, ground moraine
- Qltm - Till, minor moraine
- Qlts - Till, stagnation moraine