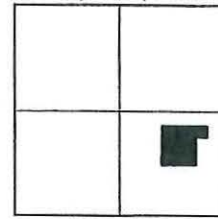


GRAPHIC SCALE



(IN FEET)
1 inch = 200 ft.



LOCATION MAP
SCALE: 1" = 300'

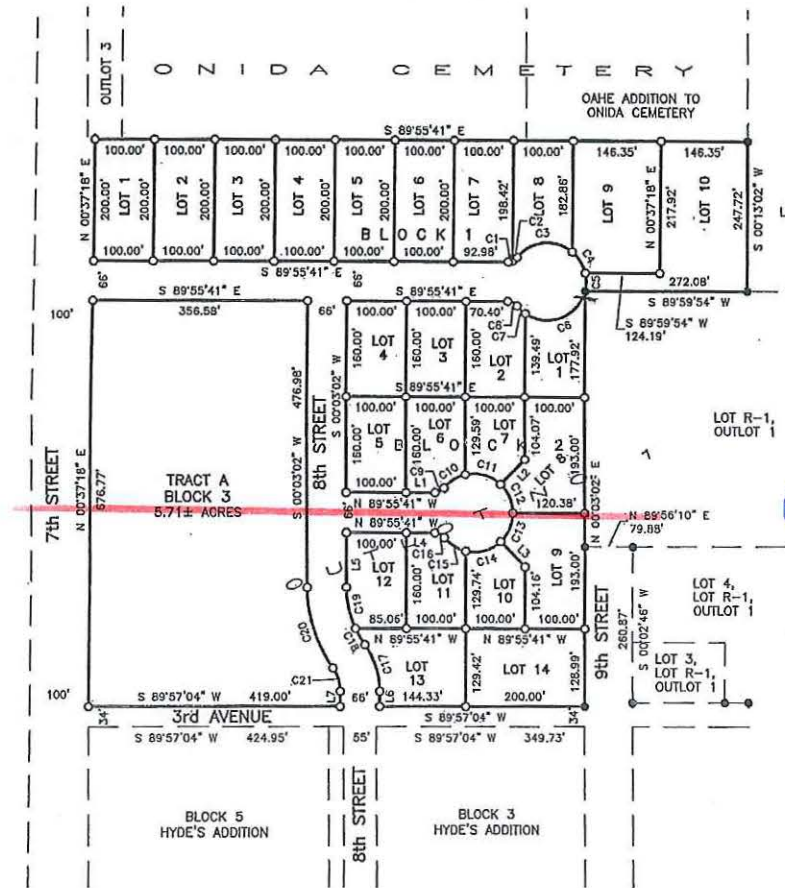
LEGEND

- = FOUND IRON MONUMENT
- = SET 5/8" X 18" REBAR WITH PLASTIC CAP NO. 8295
- 100' (P) = PLATTED BEARING OR DISTANCE
- 100' = MEASURED BEARING OR DISTANCE
- = SET NAIL
- ▲ = SET SURVEY SPIKE
- 4.00 CH (P) = PLATTED DISTANCE IN CHAINS
- = FOUND NAIL
- ◇ = SET 3/8" X 12" SPIKE W/WASHER PCK-8295
- WM = WITNESS MONUMENT

PREPARED BY: PAUL C. KIEPKE, R.L.S.
2100 NORTH SANBORN BLVD. - P.O. BOX 398
MITCHELL, SOUTH DAKOTA 57301
PHONE: (605) 996-7761

COORDINATE SYSTEM IS SOUTH DAKOTA NORTH ZONE, STATE PLANE - NORTH AMERICAN DATUM 1983 - CE03 12A.

GRID BEARINGS AND GRID DISTANCES ARE SHOWN.



Evergreen Ave

EASEMENTS:

- 10' WIDE UTILITY EASEMENT ALONG ALL STREETS AND AVENUES
- 5' WIDE UTILITY AND DRAINAGE EASEMENT ALONG SIDES AND REAR OF ALL LOTS

ACREAGE BREAKDOWN:

- BLOCK 1**
 LOTS 1 - 7 = 0.46± ACRE
 LOT 8 = 0.40± ACRE
 LOT 9 = 0.72± ACRE
 LOT 10 = 0.92± ACRE
- BLOCK 2**
 LOT 1 = 0.32± ACRE
 LOT 2 = 0.36± ACRE
 LOTS 3 - 5 = 0.37± ACRE
 LOT 6 = 0.35± ACRE
 LOT 7 = 0.30± ACRE
 LOTS 8 - 9 = 0.49± ACRE
 LOT 10 = 0.30± ACRE
 LOT 11 = 0.35± ACRE
 LOT 12 = 0.36± ACRE
 LOT 13 = 0.46± ACRE
 LOT 14 = 0.59± ACRE

Curve #	Length	Radius	Ch. Bearing	Ch. Length
C1	7.26'	20.00'	N 77°22'32" E	7.22'
C2	9.92'	20.00'	N 52°46'13" E	9.82'
C3	103.41'	65.00'	N 84°08'05" E	92.84'
C4	42.17'	65.00'	S 31°42'25" E	41.43'
C5	30.27'	65.00'	S 00°13'10" W	30.00'
C6	125.89'	65.00'	S 69°02'49" W	107.12'
C7	19.15'	65.00'	N 47°01'42" W	19.08'
C8	17.94'	20.00'	N 64°13'44" W	17.35'
C9	17.18'	20.00'	N 63°09'55" E	16.65'
C10	43.67'	65.00'	N 57°48'19" E	42.85'
C11	64.52'	65.00'	S 74°30'54" E	61.90'

Curve #	Length	Radius	Ch. Bearing	Ch. Length
C12	52.48'	65.00'	S 22°56'57" E	51.07'
C13	52.24'	65.00'	S 23°12'18" W	50.84'
C14	64.46'	65.00'	S 74°38'20" W	61.85'
C15	43.52'	65.00'	N 57°46'09" W	42.71'
C16	17.94'	20.00'	N 64°13'44" W	17.35'
C17	82.07'	133.00'	S 17°43'34" E	80.77'
C18	32.15'	167.00'	S 29°53'16" E	32.10'
C19	71.18'	167.00'	S 12°09'39" E	70.65'
C20	144.18'	233.00'	S 17°40'36" E	141.89'
C21	41.34'	67.00'	S 17°43'34" E	40.69'

Line #	Length	Direction
L1	48.90'	N 89°55'41" W
L2	58.20'	S 43°55'09" W
L3	58.30'	S 43°46'22" E
L4	48.22'	N 89°55'41" W
L5	80.96'	S 00°03'02" W
L6	25.00'	S 00°02'56" E
L7	25.00'	S 00°02'56" E

Agreed to property split 6/5/17

North Lot Oahe

South Lots City Onida

A PLAT OF LOTS 1-10, BLOCK 1; LOTS 1-14, BLOCK 2; AND TRACT A, BLOCK 3 OF WICKERSHAM ADDITION IN THE SE 1/4 OF SECTION 2, T 114 N, R 77 W OF THE 5th P.M., SULLY COUNTY, SOUTH DAKOTA.

SURVEYOR'S CERTIFICATE

I, Paul C. Kiepke, the undersigned, do hereby certify that I am a Registered Land Surveyor in and for the State of South Dakota. At the request of Bryan L. Eden and Marinda Eden, a/k/a Mindy Eden, and under their direction for purposes indicated therein, I did on or prior to February 18, 2016, survey those parcels of land described as follows: LOT 1 OF B.L. EDEN FIRST ADDITION IN THE NW 1/4 OF SECTION 19, T 110 N, R 61 W OF THE 5TH P.M., SULLY COUNTY, SOUTH DAKOTA.

In my professional opinion and to the best of my knowledge, information and belief, the within and foregoing plat is true and correct.

Dated this _____ day of _____, 2016.

Registered Land Surveyor #SD6702



SPN & Associates
 Engineers, Planners and Surveyors
 2100 North Sanborn Blvd. - P.O. Box 398 Mitchell, South Dakota 57301
 Phone: (605) 996-7761 Fax: (605) 996-0015

Exhibit B

Oahe & Onida Electric Service Territory Boundary

Page 4 of 4

Onida

